

Surgical Devices Product Catalog

The Complete Portfolio

Energy
Solutions >

THUNDERBEAT >

SONICBEAT >

SonoSurg >

Gynecology
Instruments >

Contained Tissue
Extraction >

EVEREST >

Electrosurgical
High Frequency
Devices >

OR-VAC >

Dedicated HF
Generators >

Hand Instruments
(HiQ+ and HICURA) >

Energy Solutions


Unique Hybrid Technology, Advanced Bipolar Energy, Ultrasonic Energy and Monopolar/Bipolar/Non Polar Hand Instruments

One System That Covers Different Medical Specialties and Technologies for Open, Laparoscopic and Endoscopic Surgery

Electrosurgery

ESG-400 – A Fully Equipped, Latest-Generation HF Generator

Optimizing your state-of-the-art electrosurgery in all surgical disciplines for monopolar, bipolar, and advanced bipolar modes for open, laparoscopic, and endoscopic applications, as well as transurethral or transcervical resection (TURis/TCRIs).




17343

Ultrasonic Surgery

USG-400 – Ultrasonic Energy for Advanced Tissue Management

The USG-400 generator provides compatibility with the SONICBEAT ultrasonic dissector.




5935

Unique Hybrid THUNDERBEAT Technology

Surgical Tissue Management System

Two combined surgical energy generators provide a unique platform that delivers the most widely used energy requirements to the surgical suite, eliminating the need for multiple devices in the operating room.



13897

One System for Different Medical Specialties							
Bariatrics	Upper GI	Lower GI	Urology	Other	ENT	Gynecology	Breast Surgery
Standard HF Accessories							
THUNDERBEAT							
SONICBEAT					PK TECHNOLOGY		
			HiQ+ and HICURA				



Ordering Information

Order Number	Product Description
Generators and Accessories	
WB91051W	ESG-400* electrosurgical generator
N5428060	USG-400 ultrasonic generator
N3809330	Communication cable – short: 0.25 m
N3809630	Docking fixture
WA956215	Power cable Europlug (2×)
WA95623A	Power cable UK plug, 4.5 m (1×)
WA95621A	Power cable EU plug, 4.5 m (1×)
Energy Carts and Accessories	
N3635730	Energy Cart TC-E400 (ESG/USG-400)
K10030281	EU, Energy Cart TC E410 (USG-410/OR-VAC), 220-240V
K10030280	UK, Energy Cart TC E410 (USG-410/OR-VAC), 220-240V
K10030283	OMEA, Energy Cart TC E410 (USG-410/OR-VAC), 220-240V
K10030243	Cable Hook
K10030244	Footswitch Receiver Holder
K10030245	Single Foot Switch Holder
K10030247	Drawer Unit Rear Opening
Optional	
WB50403W	Foot switch, single (bipolar) pedal
N3809430	Communication cable – long: 10 m**
N3809530	Adapter for the connection to UHI-3 or UHI-4 insufflator
WA99510A	Neutral electrode cable (reusable), for manual and automatic reprocessing and autoclaving, 4.5 m (1×)

* Including one double foot switch

** Required for the automatic mist and smoke evacuation function

Connection Options

ESG-400 Sockets



Monopolar	2 × 3-pin (Ø 4 mm), international standard
	1 × 1-pin (Ø 8 mm), Bovie standard
	1 × coaxial (Ø inner 5 mm / Ø outer 9 mm), Erbe standard
Bipolar	1 × 2-pin (Ø 4 mm, pin spacing 28.8 mm), international standard
	1 × coaxial (Ø inner 4 mm / Ø outer 8 mm), Erbe standard
Universal	1 × 7-pin, Olympus standard
Neutral electrode	2-pin standard, single, or split

USG-400 Sockets



1	THUNDERBEAT
2	SONICBEAT

As medical knowledge is constantly growing, technical modifications or changes of the product design, product specifications, accessories and service offerings may be required.

USG-410

The image shows the Olympus USG-410 Thunderbeat Sonicbeat ultrasonic welder. It is a white, rectangular device with a blue stripe across the top. The front panel features a green emergency stop button on the left, a circular connector port in the center, and a digital display on the right. The display shows 'THUNDERBEAT' at the top, with 'SEAL & CUT' and 'SEAL' options. Both options show a 'Level 1' setting. There are also buttons for 'Text' and 'Settings'. The model number 'USG-410' is printed on the left side of the front panel.

The world's first generator which can activate both ultrasonic and RF bipolar energy simultaneously in a single unit.

Integrated one dedicated socket for THUNDERBEAT and SONICBEAT which can recognize an instrument automatically.



Unique Identification Number

Order Number	Product Description
N5993860	USG-410 ultrasonic generator
N6009760	Output verification adapter for USG-410
N5995730	Power cable EU for USG-410
N6002730	SONICBEAT footswitch connector for USG-410

Electrosurgical Generator

ESG-410

High Frequency Technology



ESG-410: Performance, Safety and Flexibility

Electrosurgical high frequency generator for open, laparoscopic and endoscopic procedures. Fully equipped for all surgical disciplines with monopolar, bipolar and advanced bipolar modes.

Ordering Information	
HF Generator	
Order No.	Description
WA91307W	ESG-410 electrosurgical generator
Accessories	
Order No.	Description
WA91301W	Foot switch, double pedal, wired
WA91302W	Foot switch, double pedal, wireless
WA91303W	Foot switch, single pedal, wired
K1003028	Olympus Cart TC-E410 EU Set
WA956215	Power cable Europlug (2x)
WA95623A	Power cable UK plug, 4.5 m (1x)
WA95621A	Power cable EU plug, 4.5 m (1x)
Optional	
N3809430	Communication cable – long: 10 m*
N3809530	Adapter for the connection to UHI-3 or UHI-4 insufflator
WA99510A	Neutral electrode cable (reusable), for manual and automatic reprocessing and autoclaving, 4.5 m (1x)

Specifications	
ESG-410	
Product Category	Electrosurgical HF generator
High frequency functions	Monopolar / bipolar / advanced bipolar
Classification of Medical Device Regulation	Class IIb
Power Supply	100-120/220-240 V AC; 50/60 Hz
Dimensions H x W x D	241 x 370 x 501 mm
Weight	16.7 kg
Protection against Electric Shock	Class 1 / Type CG

* Required for the automatic mist and smoke evacuation function

THUNDERBEAT

Unique Hybrid Technology



Olympus aims to provide innovative energy solutions delivering surgical safety and instrument versatility for efficient and streamlined operations with optimal patient outcomes. This is why Olympus developed the unique hybrid technology THUNDERBEAT for open and laparoscopic surgery. THUNDERBEAT is the world's first and only advanced energy system that delivers two well-established forms of energy to a tissue simultaneously:

- **Ultrasonic energy for superior dissection and fast tissue-cutting capability**
- **Advanced bipolar energy for fast and secure hemostasis for vessels up to and including 7 mm in diameter**

With the introduction of the new-generation THUNDERBEAT Type S, the unique concept of hybrid energy technology is raised to the next level. The development of the innovative Type S coating and the revolutionary safety system Intelligent Tissue Monitoring (ITM) enables an optimal temperature control and targeted application of energy for a safe and fast operation.

The new THUNDERBEAT Open Fine Jaw Type X comes with an extra isolation shield on the bipolar probe. The X shield limits the transmission of heat to the outside of the jaw and therefore provides optimal temperature control in open surgery.



System compatibility of THUNDERBEAT with the USG-410 generator.



Ordering Information

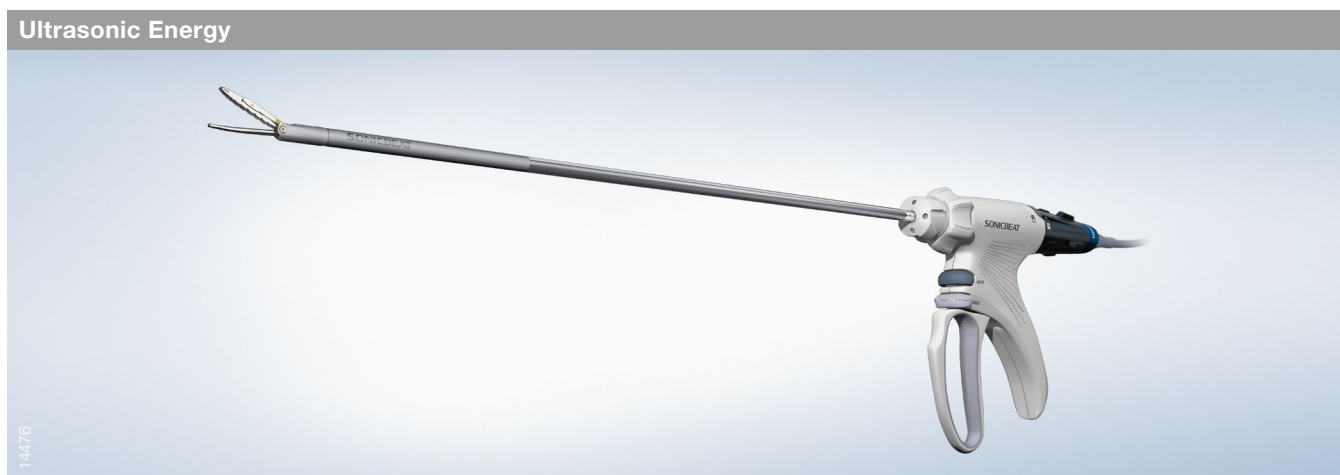
Order Number	Product Description	Article Code	Diameter	Length	Grip	Pieces
THUNDERBEAT Instruments for Endoscopic Surgery						
EGTB-0535FCS	THUNDERBEAT Type S	TB-0535FCS	5 mm	35 cm	Front-actuated	5/box
EGTB-0545FCS	THUNDERBEAT Type S	TB-0545FCS	5 mm	45 cm	Front-actuated	5/box
N3810430	THUNDERBEAT	TB-0535PC	5 mm	35 cm	Pistol	5/box
THUNDERBEAT Instruments for Open Surgery						
N5423930	THUNDERBEAT Type S	TB-0520FCS	5 mm	20 cm	Front-actuated	5/box
N3810730	THUNDERBEAT	TB-0520IC	5 mm	20 cm	Inline	5/box
N3810830	THUNDERBEAT	TB-0510IC	5 mm	10 cm	Inline	5/box
N4505530	THUNDERBEAT Open Extended Jaw	TB-0920OE	9.7 mm	20 cm	Front-actuated	5/box
N4505730	THUNDERBEAT Open Fine Jaw	TB-0009OF		9 cm	Scissor	5/box
N5768330	THUNDERBEAT Open Fine Jaw Type X (soon available)	TB-009OFX		9 cm	Scissor	5/box
Generators and Accessories						
WA91307W	ESG-410 electrosurgical generator					
N5993860	USG-410 ultrasonic bipolar generator					
N3808760	Transducer for THUNDERBEAT	TD-TB400				
N3641120	Cleaning brush for transducer	MAJ-1339				
WA95623A	Power cable UK plug, 4.5 m (1x)					
WA95621A	Power cable EU plug, 4.5 m (1x)					
A90223A	Cleaning adapter for hooks					
N2366530	Cleaning adapter for scissors					
N2301000	Cleaning brush for surfaces (all instruments)					
Energy Carts and Accessories						
K10030281	EU, Energy Cart TC E410 (USG-410/OR-VAC), 220-240V					
K10030280	UK, Energy Cart TC E410 (USG-410/OR-VAC), 220-240V					
K10030283	OMEA, Energy Cart TC E410 (USG-410/OR-VAC), 220-240V					
K10030243	Cable Hook					
K10030244	Footswitch Reciever Holder					
K10030245	Single Foot Switch Holder					
K10030247	Drawer Unit Rear Opening					
Optional Equipment						
N3809230	Foot switch for THUNDERBEAT					
WA91301W	Double pedal wired foot switch for ESG-410					
WA91302W	Double pedal wireless foot switch for ESG-410					
WA91303W	Single pedal wired foot switch for ESG-410					
N3809430	Communication cable – long: 10 m*					
N3809530	Adapter for the connection to UHI-3 or UHI-4 insufflator					
WA99510A	Neutral electrode cable (reusable), for manual and automatic reprocessing and autoclaving, 4.5 m (1x)					

* Required for the automatic mist and smoke evacuation function

As medical knowledge is constantly growing, technical modifications or changes of the product design, product specifications, accessories and service offerings may be required.

SONICBEAT

Ultrasonic Energy



SONICBEAT is based on the design of Olympus' THUNDERBEAT in order to meet the aim of steadily developing ergonomic and multipurpose instruments for open and laparoscopic surgery. In contrast to THUNDERBEAT, SONICBEAT operates with ultrasonic energy only.

In direct combination with the USG-410 generator, the latest SONICBEAT technology harnesses ultrasonic energy for the highest level of precision and safe application. Respecting anatomic layers, SONICBEAT provides the finest dissection as well as simultaneous cutting and consistent sealing of 5.0 mm vessels, at the lowest level of lateral thermal spread.

System compatibility of SONICBEAT
with the the USG-410 generator.





Ordering Information

Order Number	Product Description	Article Code	Diameter	Length	Grip	Pieces
--------------	---------------------	--------------	----------	--------	------	--------

SONICBEAT Instruments for Endoscopic Surgery

N5390430	SONICBEAT	SB-0535FC	5 mm	35 cm	Front-actuated	5/box
N5390630	SONICBEAT	SB-0545FC	5 mm	45 cm	Front-actuated	5/box

SONICBEAT Instruments for Open Surgery

N5390830	SONICBEAT	SB-0520FC	5 mm	20 cm	Front-actuated	5/box
----------	-----------	-----------	------	-------	----------------	-------

Generators and Accessories

N3808860	Transducer for SONICBEAT	TD-SB400
N3641120	Cleaning brush for transducer	MAJ-1339
N5993860	USG-410 ultrasonic bipolar generator	USG-410
WA95623A	Power cable UK plug, 4.5 m (1x)	
WA95621A	Power cable EU plug, 4.5 m (1x)	

Energy Carts and Accessories

K10030281	EU, Energy Cart TC E410 (USG-410/OR-VAC), 220-240V
K10030280	UK, Energy Cart TC E410 (USG-410/OR-VAC), 220-240V
K10030283	OMEA, Energy Cart TC E410 (USG-410/OR-VAC), 220-240V
K10030243	Cable Hook
K10030244	Footswitch Reciever Holder
K10030245	Single Foot Switch Holder
K10030247	Drawer Unit Rear Opening

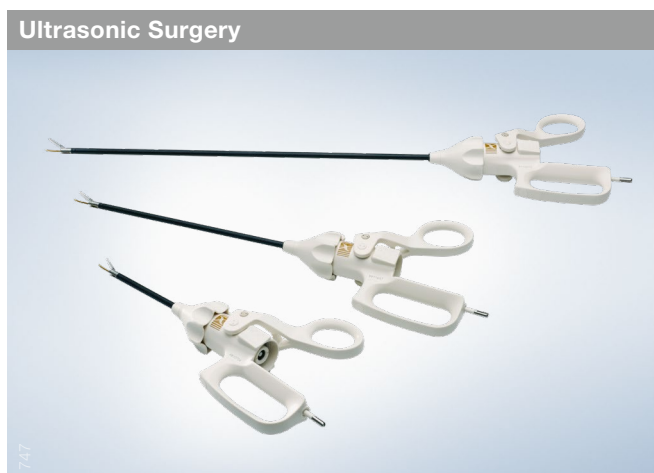
Optional Equipment

N3809130	Foot switch for SONICBEAT
N3809430	Communication cable – long: 10 m*
N3809530	Adapter for the connection to UHI-3 or UHI-4 insufflator
N6002730	SONICBEAT Footswitch Connector for USG-410

* Required for the automatic mist and smoke evacuation function

As medical knowledge is constantly growing, technical modifications or changes of the product design, product specifications, accessories and service offerings may be required.

SonoSurg Ultrasonic Energy



SonoSurgX Ultrasonic Instruments

Thanks to the fully reusable, autoclavable instruments SonoSurg offers an excellent price-performance ratio. The system enables a very precise dissection and controlled energy delivery for reliable cutting and coagulation in laparoscopic and open procedures of various surgical disciplines like general surgery, gynecology, and urology.



SonoSurg Ultrasonic Aspirators

The SonoSurg ultrasonic aspirator comprised of the IU irrigation unit* and KV-6 suction pump is a compact, high-powered system ensuring efficient ultrasound aspiration and coagulation. The system offers a wide selection of autoclavable probes to suit your needs in open and laparoscopic surgery.

System Compatibility of SonoSurg Devices with the SonoSurg G2 Generator

The SonoSurg G2* is a multifunctional ultrasonic generator enabling the use of cost-efficient reusable instruments available for open and endoscopic surgery. For a clear view during endoscopic procedures through automatic mist and smoke evacuation the SonoSurg system can be combined with the UHI-3 or UHI-4 insufflators.

* Please note that the IU irrigation unit and the SonoSurg G2 generator are no longer available.





Ordering Information

Order Number	Product Description	Article Code	Diameter	Length	Grip	Tip Design
SonoSurgX Instruments for Endoscopic Surgery						
N2643660	SonoSurgX scissor	T3771	5 mm	34 cm	Pistol	Straight
N2643960	SonoSurgX scissor (HF)	T3900	5 mm	34 cm	Pistol	Straight
N2643760	SonoSurgX scissor	T3775	5 mm	34 cm	Pistol	Curved
N2644060	SonoSurgX scissor (HF)	T3905	5 mm	34 cm	Pistol	Curved
N2644260	SonoSurgX scissor (HF)	T3915	5 mm	34 cm	Inline	Curved
N2643860	SonoSurgX scissor	T3795	5 mm	45 cm	Pistol	Curved
SonoSurg Instruments for Endoscopic Surgery						
N2301160	SonoSurg scissor	T3071	5 mm	35.7 cm	Pistol	Straight
N2301460	SonoSurg scissor (HF)	T3100	5 mm	34 cm	Pistol	Straight
N2301260	SonoSurg scissor	T3075	5 mm	34 cm	Pistol	Curved
N2301560	SonoSurg scissor (HF)	T3105	5 mm	34 cm	Pistol	Curved
N2301660	SonoSurg scissor (HF)	T3110	5 mm	34 cm	Inline	Straight
N2301760	SonoSurg scissor (HF)	T3115	5 mm	34 cm	Inline	Curved
N2301360	SonoSurg scissor	T3095	5 mm	45 cm	Pistol	Curved
A90208A	SonoSurg hook	T3060	5 mm	33 cm		
SonoSurgX Instruments for Open Surgery						
N2644760	SonoSurgX scissor (HF)	T3955	5 mm	8.8 cm	Inline	Curved
N2644560	SonoSurgX scissor (HF)	T3930	5 mm	19 cm	Pistol	Straight
N2644660	SonoSurgX scissor (HF)	T3935	5 mm	19 cm	Pistol	Curved
N2644360	SonoSurgX scissor (HF)	T3920	5 mm	19 cm	Inline	Straight
N2644460	SonoSurgX scissor (HF)	T3925	5 mm	19 cm	Inline	Curved
SonoSurg Instruments for Open Surgery						
N2302260	SonoSurg scissor (HF)	T3155	5 mm	8.8 cm	Inline	Curved
N2302060	SonoSurg scissor (HF)	T3130	5 mm	19 cm	Pistol	Straight
N2302160	SonoSurg scissor (HF)	T3135	5 mm	19 cm	Pistol	Curved
N2301860	SonoSurg scissor (HF)	T3120	5 mm	19 cm	Inline	Straight
N2301960	SonoSurg scissor (HF)	T3125	5 mm	19 cm	Inline	Curved
N1051930	SonoSurg hook	T3080	5 mm	11.3 cm		
Aspirator for Endoscopic Surgery						
N1806830	Aspirator probe for T3330 (HF)	MH-125	7 mm	43 cm		Straight
N1807230	Aspirator sheath, long	T3330		45.8 cm		Straight
Aspirator for Open Surgery						
N1806630	Aspirator probe for T3310 (HF)	MH-112	7 mm	11.7 cm		Straight
N1807030	Aspirator sheath, short	T3310		14.5 cm		Straight
N1806730	Aspirator probe for T3320 (HF)	MH-113	7 mm	12.9 cm		Angled
N1807130	Aspirator sheath, angled	T3320		15.3 cm		Angled
N1806930	SonoSurg attachment for sheaths	T3300				

Order Number	Product Description	Article Code
SonoSurg Instrument Accessories		
A90205A	SonoSurg transducer with connecting cable	T2H
N1021430	SonoSurg transducer without detachable MAJ-1121 connecting cable	T2H-C
N1021500	Cable for T2H-C transducer	MAJ-1121
A90222A	Torque wrench	MAJ-1117
26441	Cleaning brush for transducer	MH-507
WA90214A	Cleaning brush for hook/scissor	MH-362
A90223A	Cleaning adapter for hooks	MAJ-1118
N2366550	Cleaning adapter for scissors	MAJ-1532
N2301000	Cleaning brush for surfaces (all instruments)	MAJ-1534

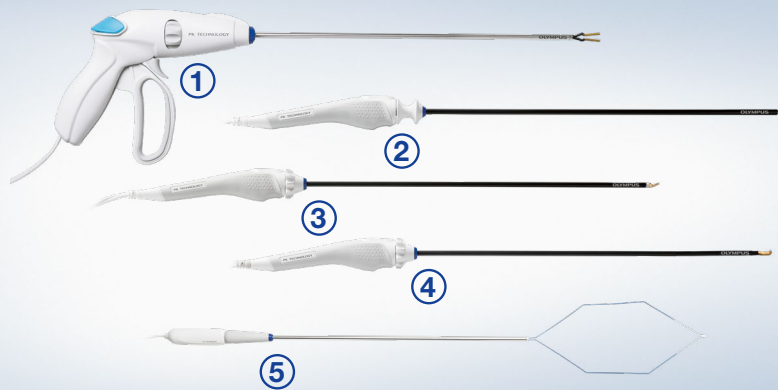
Order Number	Product Description	Article Code
Aspirator Accessories		
N1807930	Tubing set for suction/irrigation	MAJ-1099
N1806430	SonoSurg transducer without detachable MAJ-1121 connecting cable	T2L-GE-C
N1021500	Cable for T2L-GE-C transducer	MAJ-1121
N1808130	Cleaning rod for aspirator probe	MAJ-1178

As medical knowledge is constantly growing, technical modifications or changes of the product design, product specifications, accessories and service offerings may be required.

Gynecology Instruments

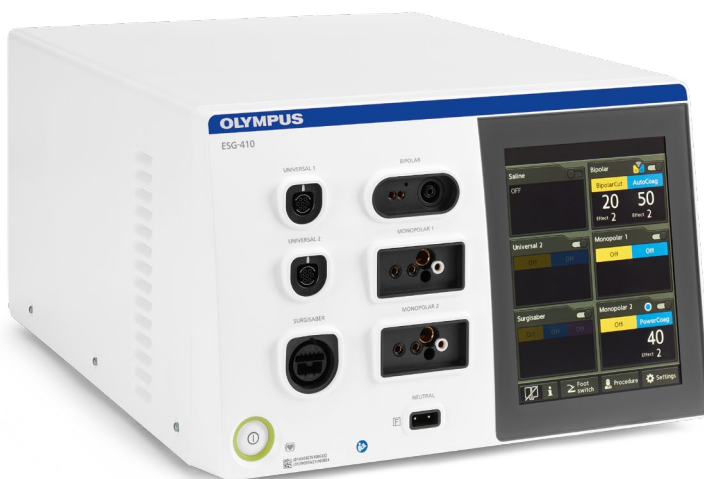
Advanced Bipolar Energy

Advanced Bipolar Energy



- ① PK Cutting Forceps
- ② PK Needle
- ③ PK Spatula
- ④ PK Hook
- ⑤ PK Lap Loop

PK TECHNOLOGY provides surgeons with the ability to seal, transect, coagulate, dissect, vaporize, resect, and mobilize tissue all with precision and control from one energy platform: the ESG-400 – a fully equipped, latest-generation HF generator that provides the PK TECHNOLOGY instruments with advanced bipolar energy. An auto-detection function and dedicated sealing and cutting modes for PK TECHNOLOGY instruments and other Olympus devices help simplify the OR workflow.



System compatibility of PK TECHNOLOGY with the ESG-410 generator.



Ordering Information

Order Number	Product Description	Diameter	Length	Pieces
PK TECHNOLOGY Instruments				
EGPK-CF0533	PK Cutting Forceps	5 mm	33 cm	5/box
WA90300A	PK Lap Loop	5 mm	33 cm	5/box
EGPK-NE0533	PK Needle	5 mm	33 cm	5/box
EGPK-JH0533	PK J-Hook	5 mm	33 cm	5/box
EGPK-SP0533	PK Spatula	5 mm	33 cm	5/box
Generators and Accessories				
WA91037W	ESG-410 electrosurgical generator			
WA95623A	Power cable UK plug, 4.5 m (1x)			
WA95621A	Power cable Europlug, 4.5 m (1x)			
Energy Carts and Accessories				
K10030281	EU, Energy Cart TC E410 (USG-410/OR-VAC), 220-240V			
K10030280	UK, Energy Cart TC E410 (USG-410/OR-VAC), 220-240V			
K10030283	OMEA, Energy Cart TC E410 (USG-410/OR-VAC), 220-240V			
K10030243	Cable Hook			
K10030244	Footswitch Receiver Holder			
K10030245	Single Foot Switch Holder			
K10030247	Drawer Unit Rear Opening			
Optional Equipment				
WA91301W	Double pedal wired foot switch for ESG-410			
WA91302W	Double pedal wireless foot switch for ESG-410			
WA91303W	Single pedal wired foot switch for ESG-410			
N3809430	Communication cable – long: 10 m			
N3809530	Adaptor for the connection to UHI-3 or UHI-4 insufflator			
WA99510A	Neutral electrode cable (reusable), for manual and automatic reprocessing and autoclaving, 4.5 m (1x)			

* Required for the automatic mist and smoke evacuation function

As medical knowledge is constantly growing, technical modifications or changes of the product design, product specifications, accessories and service offerings may be required.



Contained Tissue Extraction

Laparoscopic Power Morcellation & Containment



⑥ PK Morcellator ⑦ PneumoLiner ⑧ Moresolution

The Olympus Contained Tissue Extraction (CTE) System combines the PNEUMOLINER, a first of-its-kind tissue containment device, and the laparoscopic PK MORCELLATOR to provide certain appropriate, low risk patients with a laparoscopic surgery option to avoid open hysterectomy and myomectomy. The PK MORCELLATOR is intended for cutting and extracting tissue in laparoscopic procedures and it is recommended in conjunction with PNEUMOLINER containment for removal of uterine tissue. In addition, there is the brand new CTE2-System, consisting of PNEUMOLINER and MORESOLUTION. For this system, the MORESOLUTION variant with the 170mm cutting module is tested and approved for the PNEUMOLINER. PNEUMOLINER is the first and only FDA-approved power morcellation containment device specifically designed for intraabdominal insufflation during GYN procedures.

MORESOLUTION, our newest lightweight mechanical laparoscopic power morcellator, is considered to cut extracted tissue using a rotating single use blade.

Ordering Information	
Order Number	Product Description
Contained Tissue Extraction System Devices	
WA90601A	Moresolution
WA90200A	PK Morcellator
WA90500A	PneumoLiner (only to be sold in certified regions)



Ordering Information for Moresolution

Generator and Accessories

Order Number	Model Number	Product Description
WA90601A	02-33039	Control Unit morcellator V2.0 – Europe
WA90602A	02-33042	Power Cable – EU, length 2 m
WA90603A	02-33045	Foot Pedal, single

Working Length 120 mm

Order Number	Model Number	Product Description	Consumable	Quantity
WA90604A	02-33041	Flexible Shaft V2.0, WL 2.5 m		
WA90617A	02-33076	Rinsing Adapter for Grip Module morcellator		
WA90605A	02-33088	Protection Sleeve Ø 15 mm, WL 120 mm, Color Code grey		
WA90606A	02-33091	Obturator Ø 15 mm, to be used with 02-33088, Color Code grey		
WA90613A	04-00549	Tenaculum Forceps, jaws Ø 10 mm, double action, Ø 10 mm, WL 330 mm, incl. outer tube Ø 13 mm		
WA90614A	04-00550	Grasping Forceps, single action, Ø 10 mm, WL 330 mm, incl. outer tube Ø 13 mm		
WA90609A	02-33117	Grip Module V2.0 5-times-use for morcellator system V2.0	X	1
WA90611S	02-33085	Cutting Module Ø 15 mm to be used with 02-33088, color code grey, for morcellator system, single use, sterile, 5 pcs. / box	X	5 pcs. / box
WA90610S	02-33008	Valve Module for morcellator system, including a reducer Ø 10–5 mm single use, sterile, 5 pcs. / box	X	5 pcs. / box

Working Length 170 mm for Contained Tissue Extraction with PneumoLiner

Order Number	Model Number	Product Description	Consumable	Quantity
WA90604A	02-33041	Flexible Shaft V2.0, WL 2.5 m		
WA90617A	02-33076	Rinsing Adapter for Grip Module morcellator		
WA90607A	02-33103	Protection Sleeve Ø 15 mm, WL 170 mm, Color Code grey		
WA90608A	02-33106	Obturator Ø 15 mm, to be used with 02-33103, Color Code grey		
WA90615A	04-00547	Tenaculum Forceps, jaws Ø 10 mm, double action, Ø 10 mm, WL 420 mm, incl. outer tube Ø 13 mm		
WA90616A	04-00544	Grasping Forceps, single action, Ø 10 mm, WL 420 mm, incl. outer tube Ø 13 mm		
WA90609A	02-33117	Grip Module V2.0 5-times-use for morcellator system V2.0	X	1
WA90612S	02-33049	Cutting Module Ø 15 mm to be used with 02-33103, color code grey, for morcellator system, single use, sterile, 5 pcs. / box	X	5 pcs. / box
WA90610S	02-33008	Valve Module for morcellator system, including a reducer Ø 10–5 mm single use, sterile, 5 pcs. / box	X	5 pcs. / box
WA90500A	WA90500A	PneumoLiner containment device sterile, single-use, 5 pcs.	X	5 pcs. / box

As medical knowledge is constantly growing, technical modifications or changes of the product design, product specifications, accessories and service offerings may be required.



EVEREST Bipolar Energy

Bipolar Energy



① Everest LYONS
Dissecting Forceps

② Everest Bipolar
Cutting Forceps

③ Everest Macro-jaw
and Micro-jaw Forceps

④ Everest MOLLY
Forceps

Everest Bipolar Products

The Everest Bipolar Products offer a wide range of instruments for precise tissue coagulation, transecting, dissection, grasping and mobilization. Bipolar technology reduces the hazards associated with monopolar electrosurgery, including alternate site burns, direct coupling, capacitive coupling, and insulation failure. It also minimizes lateral thermal spread. Bipolar coagulation is superior compared to monopolar electrosurgical technology and yields less collateral thermal damage.^{1,2}



System compatibility of Everest with the ESG-410 generator and other standard bipolar generators.

¹ Vilos, G.A. and Rakumar, C. Electrosurgical Generators And Monopolar and Bipolar Electrosurgery. Journal of Minimally Invasive Gynecology. 2013;20:279–287.

² Livaditis, G.J. Comparison Of Monopolar And Bipolar Electrosurgical Modes For Restorative Dentistry: A Review of the Literature. J Prosthetic Dentistry. 2001;86:390–399.



Ordering Information

Order Number	Product Description	Diameter	Length
Everest Bipolar Cutting Forceps			
EG3005	Everest cutting forceps	5 mm	33 cm
EG3006-020	Everest cutting forceps, with cord	5 mm	33 cm
Everest LYONS Dissecting Forceps			
EG3700-000	Everest LYONS dissecting forceps	5 mm	33 cm
EG3740-000	Everest LYONS dissecting forceps	5 mm	45 cm
Everest MOLLY Forceps			
EG3300-000	Everest MOLLY forceps	3 mm	33 cm
EG3330-000	Everest MOLLY forceps	5 mm	33 cm
EG3345-000	Everest MOLLY forceps	5 mm	45 cm
Everest Macro-Jaw and Micro-Jaw Forceps			
EG3600-000	Everest Macro-jaw forceps	5 mm	33 cm
EG3640-000	Everest Macro-jaw forceps	5 mm	45 cm
EG3601-000	Everest Micro-jaw forceps	5 mm	33 cm
Everest Connector Cords For Standard Bipolar Generators*			
EGEC3999	Fixed dual banana pin style cord to connect Everest devices to generators with standard banana pin receptacles		

Generators and Accessories

WA91307W	ESG-410 electrosurgical generator
WA95623A	Power cable UK plug, 4.5 m (1x)
WA95621A	Power cable Europlug, 4.5 m (1x)

Energy Carts and Accessories

K10030281	EU, Energy Cart TC E410 (USG-410/OR-VAC), 220-240V
K10030280	UK, Energy Cart TC E410 (USG-410/OR-VAC), 220-240V
K10030283	OMEA, Energy Cart TC E410 (USG-410/OR-VAC), 220-240V
K10030243	Cable Hook
K10030244	Footswitch Receiver Holder
K10030245	Single Foot Switch Holder
K10030247	Drawer Unit Rear Opening

Optional Equipment

WA91301W	Double pedal wired foot switch for ESG-410
WA91302W	Double pedal wireless foot switch for ESG-410
WA91303W	Single pedal wired foot switch for ESG-410
N3809430	Communication cable – long: 10 m**
N3809530	Adaptor for the connection to UHI-3 or UHI-4 insufflator
WA99510A	Neutral electrode cable (reusable), for manual and automatic reprocessing and autoclaving, 4.5 m (1x)

* Reusable, supplied non-sterile

** Required for the automatic mist and smoke evacuation function

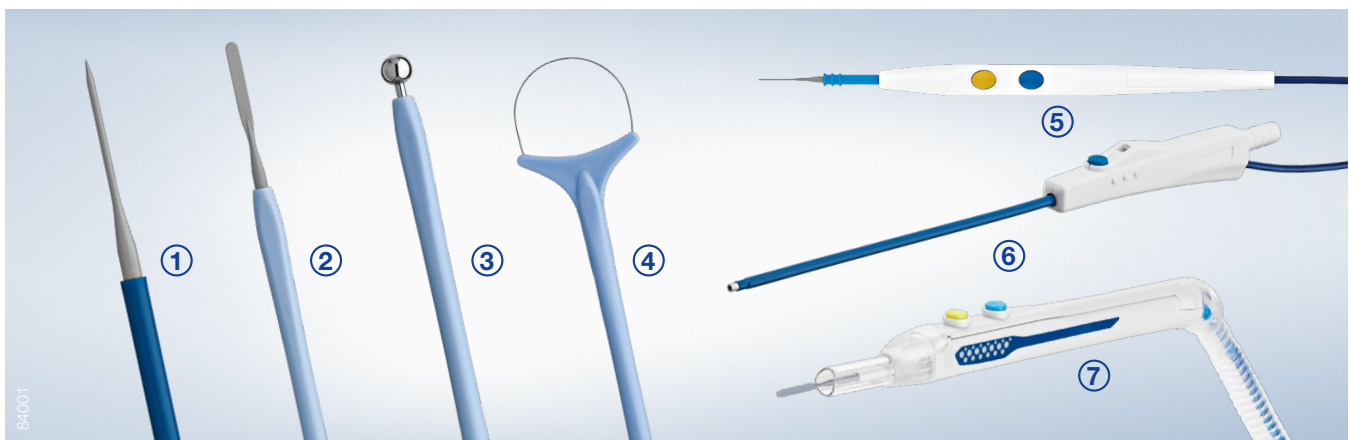
All devices supplied sterile, single-use disposable, except for Everest connector cords.

As medical knowledge is constantly growing, technical modifications or changes of the product design, product specifications, accessories and service offerings may be required.



Electrosurgical High Frequency Devices

Standard Mono- and Bipolar Energy



- ① Needle electrode
- ② Blade electrode
- ③ Ball electrode
- ④ Loop electrode
- ⑤ Electrosurgical pencil
- ⑥ Suction coagulator
- ⑦ Integrated Smoke Evacuation Pencil

The Olympus electrosurgical portfolio offers a wide range of electrosurgical instruments, including disposable monopolar electrodes, pencils and suction coagulators, reusable bipolar forceps and a number of different accessories. Featuring a lightweight, ergonomic design and flexible cable, the Olympus electrosurgical pencils are preloaded with high quality and economical nonstick (PTFE) or stainless steel blade electrodes. To provide even more choice and value for all of the surgeon's needs, a variety of nonstick and stainless steel electrodes in different lengths and tip styles is additionally offered.



System usable with the ESG-410 and other standard high frequency generators.

Electrosurgical High Frequency Devices



Ordering Information

Order Number	Product Description	Size/Length/Diameter	Options	Pieces
Disposable Monopolar Electrosurgical Electrodes				
WA98510E	Electrode, blade	2.75"	Coated	10 pcs./box
WA98511E	Electrode, blade	2.75"	Non-coated	10 pcs./box
WA98520E	Electrode, blade	2.75"	Coated, extended insulation	10 pcs./box
WA98521E	Electrode, blade	2.75"	Non-coated, extended insulation	10 pcs./box
WA98530E	Electrode, blade	4"	Coated	10 pcs./box
WA98531E	Electrode, blade	4"	Non-coated	10 pcs./box
WA98540E	Electrode, blade	4"	Coated, extended insulation	10 pcs./box
WA98541E	Electrode, blade	4"	Non-coated, extended insulation	10 pcs./box
WA98550E	Electrode, blade	6"	Coated	10 pcs./box
WA98551E	Electrode, blade	6"	Non-coated	10 pcs./box
WA98560E	Electrode, blade	6"	Coated, extended insulation	10 pcs./box
WA98561E	Electrode, blade	6"	Non-coated, extended insulation	10 pcs./box
WA98610E	Electrode, needle	2.75"	Coated	10 pcs./box
WA98611E	Electrode, needle	2.75"	Non-coated	10 pcs./box
WA98620E	Electrode, needle	2.75"	Coated, extended insulation	10 pcs./box
WA98621E	Electrode, needle	2.75"	Non-coated, extended insulation	10 pcs./box
WA98630E	Electrode, needle	4"	Coated	10 pcs./box
WA98631E	Electrode, needle	4"	Non-coated	10 pcs./box
WA98640E	Electrode, needle	4"	Coated, extended insulation	10 pcs./box
WA98641E	Electrode, needle	4"	Non-coated, extended insulation	10 pcs./box
WA98650E	Electrode, needle	6"	Coated	10 pcs./box
WA98651E	Electrode, needle	6"	Non-coated	10 pcs./box
WA98660E	Electrode, needle	6"	Coated, extended insulation	10 pcs./box
WA98661E	Electrode, needle	6"	Non-coated, extended insulation	10 pcs./box
WA98830E	Electrode, ball	2.75", 5 mm	Coated	10 pcs./box
WA98840E	Electrode, ball	2.75", 5 mm	Non-coated	10 pcs./box
WA98810E	Electrode, ball	5.38", 5 mm	Coated	10 pcs./box
WA98820E	Electrode, ball	5.38", 5 mm	Non-coated	10 pcs./box
WA98950E	Electrode, loop	10 x 10 mm		10 pcs./box
WA98951E	Electrode, loop	15 x 10 mm		10 pcs./box
WA98952E	Electrode, loop	20 x 10 mm		10 pcs./box
WA98953E	Electrode, loop	20 x 15 mm		10 pcs./box
Disposable Monopolar Electrosurgical Pencils				
WA98210B	Electrosurgical pencil	3 m cable	Push button with coated blade	50 pcs./box
WA98211B	Electrosurgical pencil	3 m cable	Push button with non-coated blade	50 pcs./box
WA98220B	Electrosurgical pencil	3 m cable	Push button with coated blade, holster	30 pcs./box
WA98221B	Electrosurgical pencil	3 m cable	Push button with non-coated blade, holster	30 pcs./box
WA98230B	Electrosurgical pencil	3 m cable	Push button with coated high insulation blade, holster	30 pcs./box
WA98231B	Electrosurgical pencil	4.5 m cable	Push button with coated blade	50 pcs./box
WA98210R	Electrosurgical pencil	3 m cable	Rocker switch with coated blade	50 pcs./box
WA98211R	Electrosurgical pencil	3 m cable	Rocker switch with non-coated blade	50 pcs./box
WA98220R	Electrosurgical pencil	3 m cable	Rocker switch with coated blade, holster	30 pcs./box
WA98221R	Electrosurgical pencil	3 m cable	Rocker switch with non-coated blade, holster	30 pcs./box
WA98230R	Electrosurgical pencil	3 m cable	Rocker switch with coated high insulation blade, holster	30 pcs./box
WA98231R	Electrosurgical pencil	4.5 m cable	Rocker switch with coated blade	50 pcs./box
WA98210F	Electrosurgical pencil	3 m cable	Foot control with coated blade	50 pcs./box
WA98211F	Electrosurgical pencil	3 m cable	Foot control with non-coated blade	50 pcs./box
WA98220F	Electrosurgical pencil	3 m cable	Foot control with coated blade, holster	30 pcs./box
WA98221F	Electrosurgical pencil	3 m cable	Foot control with non-coated blade, holster	30 pcs./box
Disposable Smoke Evacuation				
WA98192S	OR-VAC monopolar electrosurgical pencil adapter	22 mm		20 pcs./box
WA98191S	Integrated Smoke Evacuation Pencil, telescopic, with coated blade electrode	22 mm	Push button with coated blade	20 pcs./box



Ordering Information

Order Number	Product Description	Size/Length/Diameter	Options	Pieces
Disposable Monopolar Suction Coagulators				
WA98410C	Suction coagulator	8 Fr	Hand switch	15 pcs./box
WA98420C	Suction coagulator	10 Fr	Hand switch	15 pcs./box
WA98430C	Suction coagulator	12 Fr	Hand switch	15 pcs./box
WA98411C	Suction coagulator	8 Fr	Foot control	15 pcs./box
WA98421C	Suction coagulator	10 Fr	Foot control	15 pcs./box
WA98431C	Suction coagulator	12 Fr	Foot control	15 pcs./box
Disposable Neutral Electrodes				
WA99512C	Neutral electrode, for newborns		With cable	15 pcs./box
WA99513A	Neutral electrode, for children		Without cable	100 pcs./box
WA99513C	Neutral electrode, for children		With cable	15 pcs./box
WA99514A	Neutral electrode, for adults		Without cable	100 pcs./box
WA99514C	Neutral electrode, for adults		With cable	15 pcs./box
WA99516A	Neutral electrode, universal size		Without cable	100 pcs./box
WA99516C	Neutral electrode, universal size		With cable	15 pcs./box
WA99510A	Cable, for neutral electrode, suitable for manual and automatic reprocessing and autoclaving*	4.5 m		1 pc./box
Reusable Bipolar Electrosurgical Devices				
WB990038	Bipolar forceps angled	180 mm		1 pc./box
WB990041	Bipolar forceps bayonet	200 mm		1 pc./box
WB990037	Bipolar cable	3 m		1 pc./box
Disposable Accessories				
WA98200A	Tip cleaner	48 x 48 mm		50 pcs./box
WA98300A	Holster			12 pcs./box
Generators and Accessories				
WA91307W	ESG-410 electrosurgical generator			
WA95623A	Power cable UK plug, 4.5 m (1x)			
WA95621A	Power cable Europlug, 4.5 m (1x)			
Energy Carts and Accessories				
K10030281	EU, Energy Cart TC E410 (USG-410/OR-VAC), 220-240V			
K10030280	UK, Energy Cart TC E410 (USG-410/OR-VAC), 220-240V			
K10030283	OMEA, Energy Cart TC E410 (USG-410/OR-VAC), 220-240V			
K10030243	Cable Hook			
K10030244	Footswitch Reciever Holder			
K10030245	Single Foot Switch Holder			
K10030247	Drawer Unit Rear Opening			
Optional Equipment				
WA91301W	Double pedal wired foot switch for ESG-410			
WA91302W	Double pedal wireless foot switch for ESG-410			
WA91303W	Single pedal wired foot switch for ESG-410			
N3809430	Communication cable – long: 10 m**			
N3809530	Adaptor for the connection to UHI-3 or UHI-4 insufflator			
WA99510A	Neutral electrode cable (reusable), for manual and automatic reprocessing and autoclaving, 4.5 m (1x)			

* Reusable

** Required for the automatic mist and smoke evacuation function

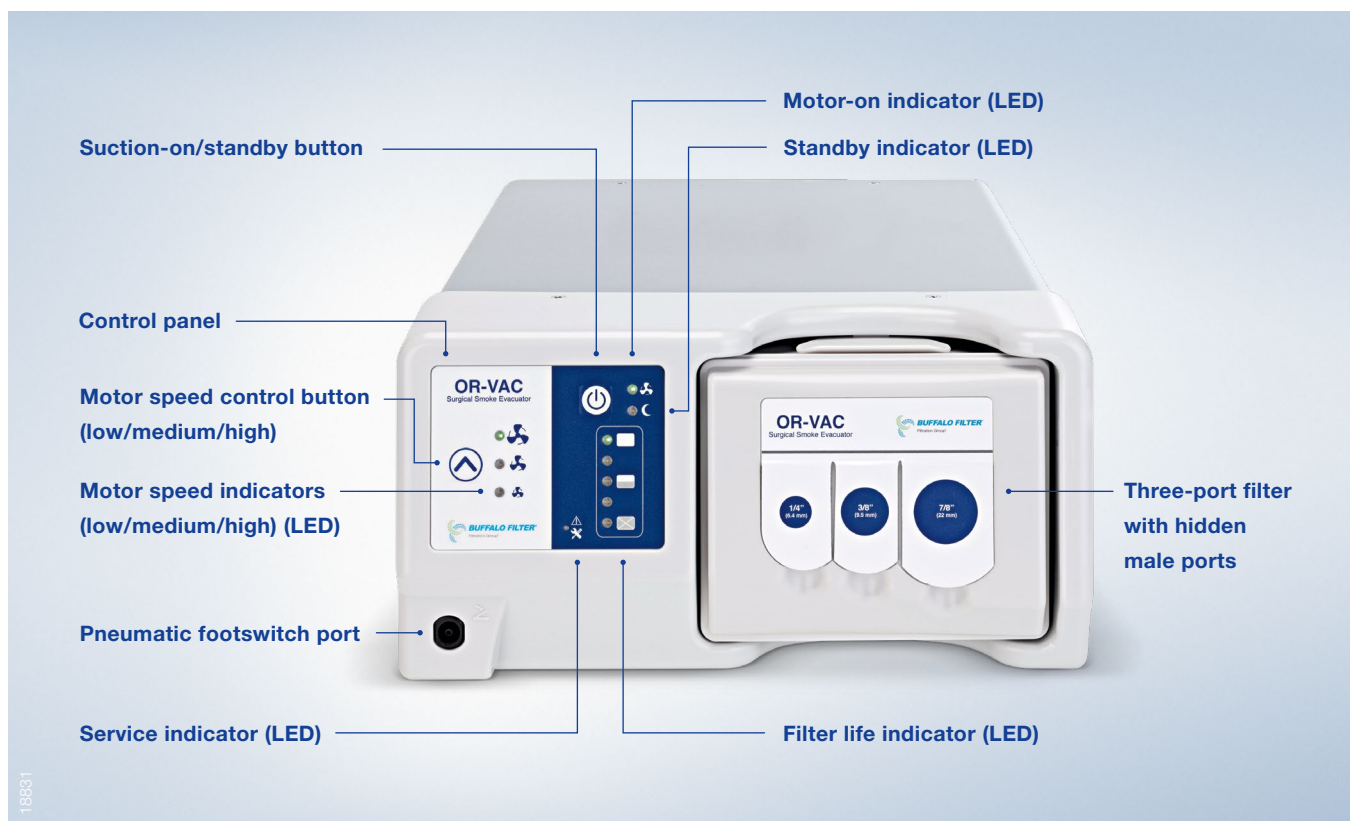
As medical knowledge is constantly growing, technical modifications or changes of the product design, product specifications, accessories and service offerings may be required.

OLYMPUS

OLYMPUS EUROPA SE & CO. KG
Postbox 10 49 08, 20034 Hamburg, Germany
Wendenstrasse 20, 20097 Hamburg, Germany
Phone: +49 40 23773-0, Fax: +49 40 233765
www.olympus-europa.com



OR-VAC Surgical Smoke Evacuator



The OR-VAC surgical smoke evacuator provides ideal smoke management for operating rooms, physicians' offices, and outpatient surgery centers. The OR-VAC minimizes exposure to these toxic smoke biohazards during electrosurgery, procedures with lasers, and ultrasound tissue dissections. It combines variable filter life, a compact design, and three-port filter with filter-life-tracking technology.



Ordering Information

Order Number	Reference Number	Product Description
WA98110A	HYVV220	OR-VAC surgical smoke plume evacuator, 220/240 V
WA98115A	FOW220	OR-VAC surgical smoke plume evacuator, 220/240 V, with exhaust capture port
WA98120A	OL3532	OR-VAC filter, 2/box
WA98130A	OLLAP12	OR-VAC laparoscopic smoke evacuation tube, 12/box
WA98160A	OL3MT24	OR-VAC open smoke evacuation tube, 24/box
WA98140A	OLSONIC	OR-VAC adapter for automatic activation
WA98150A	OLPRFIL20	OR-VAC fluid trap, 20/box
WA95623A		Power cable, UK, 4.5 m with angled plug
N3647400	-	Communication cable, length 0.7 m
N3647600	-	Communication cable, length 1.8 m
N3809430	-	Communication cable, length 10 m

Energy Carts and Accessories

K10030281	-	EU, Energy Cart TC E410 (USG-410/OR-VAC), 220-240V
K10030280	-	UK, Energy Cart TC E410 (USG-410/OR-VAC), 220-240V
K10030283	-	OMEA, Energy Cart TC E410 (USG-410/OR-VAC), 220-240V
K10030243	-	Cable Hook
K10030244	-	Footswitch Receiver Holder
K10030245	-	Single Foot Switch Holder
K10030247	-	Drawer Unit Rear Opening

Specifications

Dimensions	15.2 (H) × 27.9 (W) × 39.4 (D) cm
Weight	5.0 kg
Noise Level	55.0 dB A (max.)

Flow Settings

Standard Tube ID	Liters per Minute
22 mm	708*
9.5 mm	130
6.4 mm	57

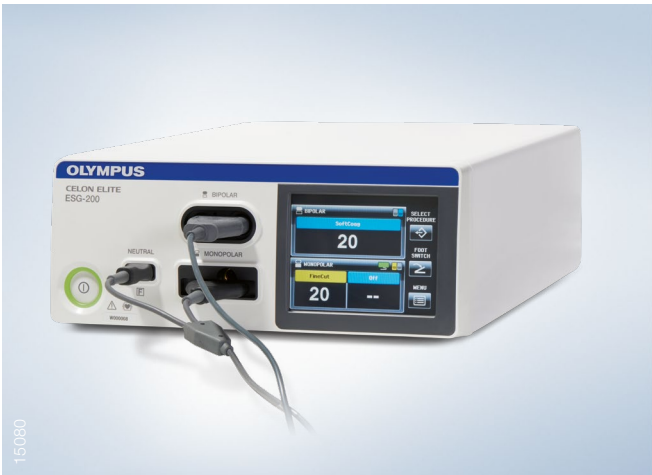
* Using new 22 mm tubing

As medical knowledge is constantly growing, technical modifications or changes of the product design, product specifications, accessories and service offerings may be required.



Dedicated HF Generators

For ENT, Gastrointestinal and Respiratory



ESG-200

CELON ELITE is a radiofrequency-based power control unit that incorporates multiple functions into a single device. The intelligent tissue monitoring allows precise and safe tissue ablation for a variety of ENT indications.

Specifications		
Areas of Application	ENT, Head and Neck	
Special Features	<ul style="list-style-type: none">· Touch screen· Personalized settings· Radiofrequency-induced thermotherapy (RFITT)	
Sockets	Bipolar output	Monopolar output
	Olympus standard 2-pin plug (28 mm)	International standard 3-pin plug (4 mm diameter)
	Erbe standard 1-pin coaxial plug	Bovie standard* 1-pin plug (8 mm diameter)
		Erbe standard** 1-pin plug (5 mm diameter)
		Banana plug 1-pin plug (4 mm diameter)
Max. Power Output	120 watts	



ESG-300

The ESG-300 is a high-end HF generator dedicated to advanced gastrointestinal and respiratory procedures such as POEM or ESD. The ESG-300 can be combined with the APU-300 for argon plasma applications.

Specifications		
Areas of Application	Gastrointestinal and respiratory	
Special Features	<ul style="list-style-type: none">· Touch screen· Wireless foot switch· Personalized settings· Argon PLASMA ready (in combination with APU-300)	
Sockets	Bipolar output	Monopolar output
	International standard 2-pin plug (22 mm)	International standard 3-pin plug (4 mm diameter)
	Erbe standard 1-pin coaxial plug	Bovie standard 1-pin plug (8 mm diameter)
		Banana plug 1-pin plug (4 mm diameter)
Max. Power Output	120 watts	



Ordering Information

CELON ELITE (ESG-200)

Order Number	Product Description
WA90001A	CELON ELITE "Type E", (incl. double-pedal foot switch)
WA90002A	CELON ELITE "Type B", (incl. double-pedal foot switch)
WA95621A	Power cable, EU, 4.5 m with angled plug
WA95622A	Power cable, US, 4.5 m with angled plug
WA95623A	Power cable, UK, 4.5 m with angled plug
WB50402W	Double-pedal foot switch
WA99510A	Neutral electrode cable (reusable), for manual and automatic reprocessing and autoclaving, 4.5 m (1x)
WB990007	CelonProBreath
WB990008	CelonProSleep Plus
WB990278	CELON ELITE ProCut Handpiece
WB990177	CelonProCut Electrode (5 pcs/box)
WB990202	CelonProCut Gripping Forceps

ESG-300

Order Number	Product Description
WA90003W	ESG-300 electrosurgical generator
WA90004W	APU-300 argon plasma unit
WA94034W	Wireless foot switch incl. receiver and charger
WA94033C	Wired foot switch, 4 m cable
K10026806	TC-E300 (EU) system cart, for most European countries
K10026805	TC-E300 (UK) system cart, UK standard
A02915A	MAJ-860 active cord for ET instruments, 8 mm
E0427213	MAJ-814 connecting cable for disposable neutral electrode
E0427245	MAJ-897 split neutral electrode, disposable, 10 pcs
WA94041A	Pressure reducer, DIN 477-6, central and southern Europe
WA94042A	Pressure reducer, DIN 477-10, northern Europe
WA94043A	CGA no. 580, Italy

As medical knowledge is constantly growing, technical modifications or changes of the product design, product specifications, accessories and service offerings may be required.

HICURA & HIQ+

Monopolar and Bipolar Hand Instruments – Needle Holders, Suction & Irrigation



HICURA is the new generation of laparoscopic hand instruments that follows the HIQ+ line. Modular system comprising a wide range of product offerings with different lengths, shafts, handles and jaws to accommodate surgeons' needs. The three-part design enables individual replacement of worn components. The system contains no spare parts that might get lost which turns HICURA into a smart solution for every OR.

- **Adapted handle design for grasping and dissection forceps.**
- **Ergonomic Size M and Size L handles available.**
- **Intuitive and easy assembly and disassembly thanks to acoustic "click" feedback.**
- **Modular, exchangeable and cost-effective system.**
- **Sterilisation in assembled condition.**

For detailed ordering information please refer to the hand instruments catalog:

[!\[\]\(11180f88349a0f55a115986a3613acf7_img.jpg\) Hand instruments catalog](#)

As medical knowledge is constantly growing, technical modifications or changes of the product design, product specifications, accessories and service offerings may be required.