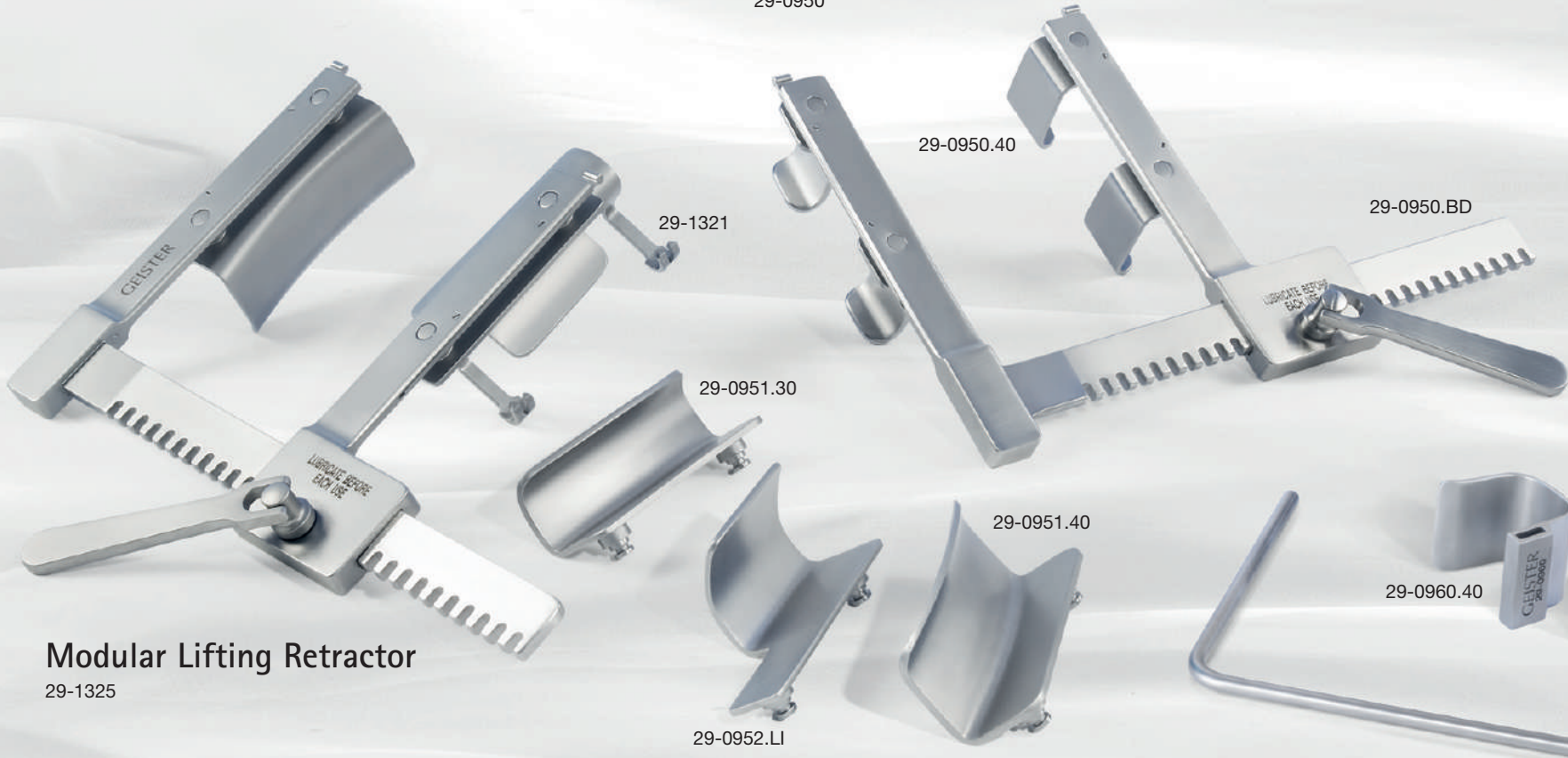




Modular Sternum Retractor

29-0950

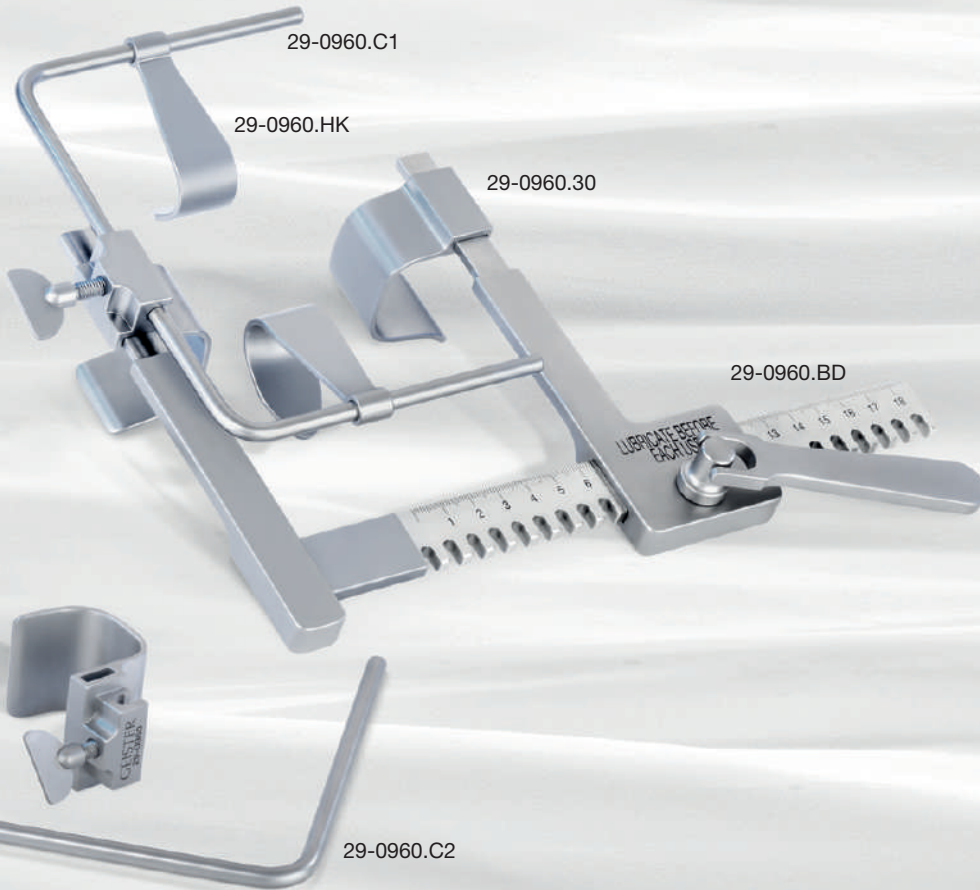


Modular Lifting Retractor

29-1325

Massetti-Babatasi Mini-Sternotomy Retractor

29-0960



Modular Sternum Retractor

Art.-No.	A	B	C	D
29-0950	40 mm	28 mm	200 mm	150 mm

29-0950 includes

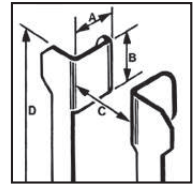
29-0950.BD Body only

29-0950.40 Swivel blades (4)

Optional extra blades for 29-0950

29-0950.30	30 mm	28 mm	(4)
29-0951.30	30 mm	100 mm	(2)
29-0951.40	40 mm	100 mm	(2)

Upgrade Kit for I.M.A. see 29-1326



Massetti-Babatasi Mini-Sternotomy Retractor

Art.-No.	A	B	C	D
29-0960	-	-	130mm	130mm

29-0960 includes

29-0960.BD Body only

29-0960.30 40 mm 30 mm each 1 left and right (2)

29-0960.40 40 mm 40 mm each 1 left and right (2)

29-0960.C1 C-Bar small 6 mm, 16 cm (1)

29-0960.C2 C-Bar large 6 mm, 21 cm (1)

29-0960.HK 35 mm 20mm each 1 left and right (2)

40 mm 20 mm each 1 left and right (2)

Modular Lifting Retractor

Art.-No.	A	B	C	D
29-1325	-	-	200 mm	150 mm

29-1325 includes

29-0950.BD Body only

29-1326 Upgrade Kit for 29-0950

29-1326 includes

29-0951.30 30 mm 100 mm (2)

29-0951.40 40 mm 100 mm (2)

29-0952.LI 40 mm 60 mm (1)

29-0952.RE 40 mm 60 mm (1)

29-1321 100 mm (1)

Optional extra blades for 29-1325

29-0950.30 30 mm 20 mm (4)

29-0950.40 40 mm 20 mm (4)