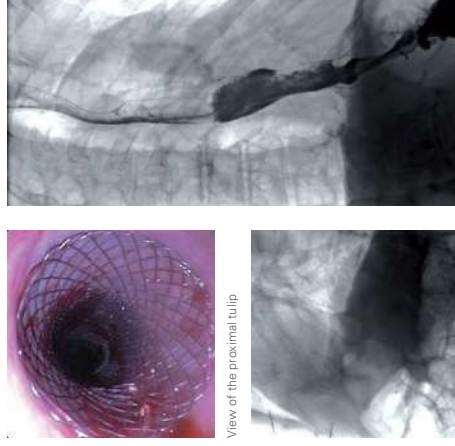


**SUCCESSFUL IN PRACTICAL USE**

The MICRO-TECH oesophagus stent has already proved its worth thousands of times in practice owing to its reliability, positional stability, excellent handling and the wide selection of lengths.

The stent adapts to the oesophageal wall in the best possible manner thanks to its atraumatic shape and high radial force. Furthermore, the stent possesses excellent radiopacity and can be positioned with good visibility and precision at significant points with the aid of the additional X-ray markings.



View of the proximal tulip

Released under X-ray

Control with contrast medium

**POSITIONALLY STABLE STENT DESIGN**

The oesophagus stent is extremely positionally stable. Its self-expanding Nitinol wire adapts itself perfectly to the patient's anatomy and the atraumatic ends ensure a maximum hold.



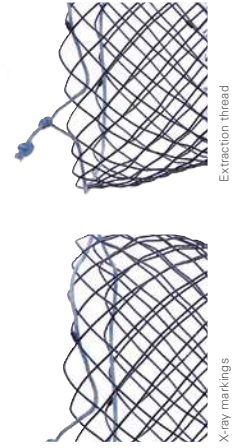
# OESOPHAGUS STENTS (GEN-I)

## HIGHEST QUALITY FOR EVERY INDICATION

MICRO-TECH provides you with a comprehensive selection of self-expanding stents for bypassing oesophageal stenoses. The stents are characterised by very high flexibility and are available with and without covering. The working diameter of the stent is 20, 24 or 28 mm while lengths vary of between 60 and 140 mm. Therefore, the optimum solution is always at hand for every indication.

**SPECIFIC CHARACTERISTICS**

- Self-expanding
- Nitinol mesh with atraumatic ends
- Excellent positional stability
- High radial force
- Resistant and elastic covering
- Fully covered stents available
- Parylene coated
- High radiopacity
- Extraction threads for removal and repositioning
- Guide wire-compatible up to 0.035 inches

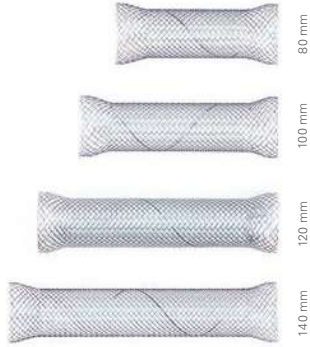


X-ray markings

Extraction thread

## DIAMETERS UP TO 28 MM

MICRO-TECH always offers you the appropriate solution with the oesophagus stent in three different diameters: 20, 24 or 28 mm in the central section. The stent end is 6 mm wider in each case.



## NUMEROUS STANDARD LENGTHS

Depending on the length of the site to be bypassed, you can resort to one of five standard lengths: short stents measuring 60 and 80 mm, medium lengths of 100 and 120 mm and long versions of 140 mm.



## SPECIFICATIONS

| REF                                    | Ø centre mm | Ø end mm | Length mm | Covering mm |
|--|-------------|----------|-----------|-------------|
| <b>STENTS WITHOUT COVERING</b>         |             |          |           |             |
| ST01-101.20.080                        | 20          | 26       | 80        | Without     |
| ST01-101.20.100                        | 20          | 26       | 100       | Without     |
| ST01-101.20.120                        | 20          | 26       | 120       | Without     |
| ST01-101.20.140                        | 20          | 26       | 140       | Without     |
| ST01-101.24.080                        | 24          | 30       | 80        | Without     |
| ST01-101.24.100                        | 24          | 30       | 100       | Without     |
| ST01-101.24.120                        | 24          | 30       | 120       | Without     |
| ST01-101.24.140                        | 24          | 30       | 140       | Without     |
| <b>STENTS WITH PARTIAL COVERING</b>    |             |          |           |             |
| ST01-102.20.060                        | 20          | 26       | 60        | 30          |
| ST01-102.20.080                        | 20          | 26       | 80        | 50          |
| ST01-102.20.100                        | 20          | 26       | 100       | 70          |
| ST01-102.20.120                        | 20          | 26       | 120       | 90          |
| ST01-102.20.140                        | 20          | 26       | 140       | 110         |
| ST01-102.24.080                        | 24          | 30       | 80        | 50          |
| ST01-102.24.100                        | 24          | 30       | 100       | 70          |
| ST01-102.24.120                        | 24          | 30       | 120       | 90          |
| ST01-102.24.140                        | 24          | 30       | 140       | 110         |
| <b>STENTS WITH END-TO-END COVERING</b> |             |          |           |             |
| ST01-103.20.060                        | 20          | 26       | 60        | 60          |
| ST01-103.20.080                        | 20          | 26       | 80        | 80          |
| ST01-103.20.100                        | 20          | 26       | 100       | 100         |
| ST01-103.20.120                        | 20          | 26       | 120       | 120         |
| ST01-103.20.140                        | 20          | 26       | 140       | 140         |
| ST01-103.24.060                        | 24          | 30       | 60        | 60          |
| ST01-103.24.080                        | 24          | 30       | 80        | 80          |
| ST01-103.24.100                        | 24          | 30       | 100       | 100         |
| ST01-103.24.120                        | 24          | 30       | 120       | 120         |
| ST01-103.24.140                        | 24          | 30       | 140       | 140         |
| ST01-103.28.100                        | 28          | 34       | 100       | 100         |
| ST01-103.28.120                        | 28          | 34       | 120       | 120         |

## INTRODUCER SYSTEM

| Ø mm/fr. | Length mm | Guide wire | RM <sup>1</sup> | IC <sup>2</sup> | Lock <sup>3</sup> |
|----------|-----------|------------|-----------------|-----------------|-------------------|
| 8/24     | 700       | 0.035 inch | 2               | Yes             | Yes               |

Recommended guide wire: 600375-5

\*1 RM – radiopaque markings / \*2 IC – irrigation channel / \*3 Lock – secures the introducer system during storage, transportation and introduction

Also as a special size on individual stent



10 X-ray markers on all significant positions

## POINT OF NO RETURN

A mark on the delivery system shows the “point of no return” at stent placement.



## RADIOPAQUE MARKERS FOR SECURE INSERTION OF STENTS

All of our oesophagus stents are equipped with up to 10 radiopaque markers. They are clearly visible under radiological control and thus enable a secure and precise stent release.

## WITH AND WITHOUT COVERING

Depending on the model, the stents have a protective covering. Choose between a complete covering from one stent end to the other, a partial covering in which the ends remain free and a cover-free stent.

## INTRODUCER FOR PRECISE RELEASE

All stents are preloaded on the easy-to-manipulate introducer, which allows rapid and precise stent release. The system also allows you to bring the stent into the desired position even when in the oral cavity during release.