

A
AMPLITUDE[®]

SCORE[®]
total knee prosthesis
cemented or cementless



- Anatomical femoral condyle.
- Trochlea allowing patella replacement or not.
- Constant depth of the trochlear groove :
 - To reduce the patella pressure.
 - To assure congruency with the spinal massif of the polyethylene insert.
 - To improve sagittal and frontal stability.



- 6° anterior cut to preserve the anterior cortical bone.
- Single center of rotation from extension to 100° of flexion.
- Reduction of the radius after 100° to improve flexion.
- 80 µm of HAP coating in cementless version.

SCORE® total Knee Prosthesis cemented or cementless



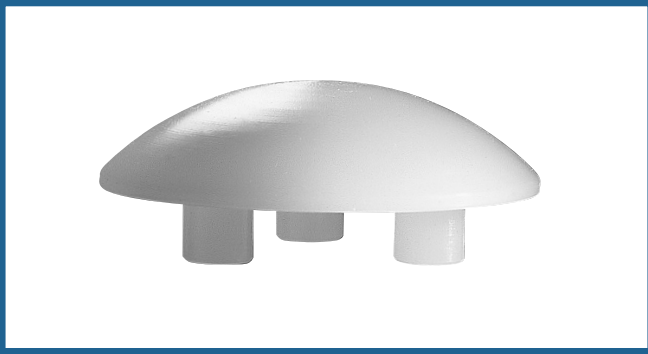
- Total Knee Prosthesis without PCL conservation.
- Sagittal and frontal congruency.
- Rotative mobility of the tibial insert.
- Cementless or cemented.
- 7 sizes for femoral and tibial components in Cobalt Chrome.



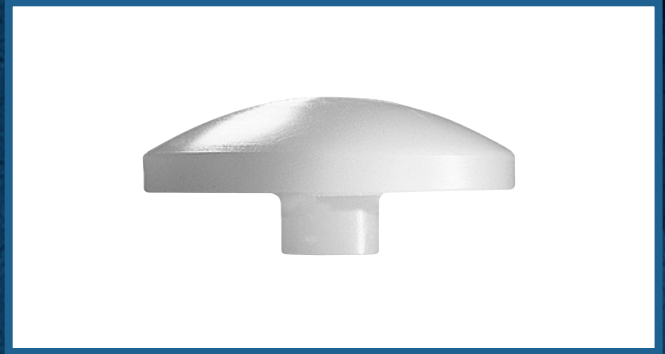
- Congruency of the femoral component with tibial insert in extension.
- Prosthetic spinal massif to ensure stability during flexion.
- Cylindrical and conical plug to avoid dislocation with the tibial baseplate.
- Splaying insert to allow size matching.
- Material : machined UHMW PE.
- Sterilisation : Vacuum gamma irradiation.



- Anatomical posterior shape of the tibial baseplate .
- Highly polished articular surface.
- Delta wing and conical tibial keel shape.
- Optional extension stems.



- Resurfacing patella.
- Dome shaped patella.
- Cemented.



- Inset patella.
- Cemented.



- Cementless inset patella.
- Congruent articular surface in the trochlea for:
 - Stability optimizing.
 - Strength spreading.
 - Wear lowering.
- Press-fit fixation with wings.

SCORE® : Instrumentation

- Navigated or mechanical instrumentation: possibility to switch per operatively.
- Independent or linked cuts.
- Anterior or posterior femoral reference.
- Checking the ligament balancing in extension and in flexion before femoral cuts.
- Visualisation and determination of the femoral rotation according to bone and ligament parameters.
- Visualisation and determination of the medio-lateral position of the femoral component in accordance with the patella position.
- 5 in 1 femoral cutting guide: standard or I.M.A. (Instrumentation Minimal Approach).
- Patella instrumentation: cut or ream.

SCORE® Femoral component - cementless HAP coated - S. 1 RIGHT	1-0200101	SCORE® mobile bearing insert - Size 7 thickness 10 mm	1-0200617
SCORE® Femoral component - cementless HAP coated - S. 2 RIGHT	1-0200102	SCORE® mobile bearing insert - Size 7 thickness 12 mm	1-0200627
SCORE® Femoral component - cementless HAP coated - S. 3 RIGHT	1-0200103	SCORE® mobile bearing insert - Size 7 thickness 14 mm	1-0200637
SCORE® Femoral component - cementless HAP coated - S. 4 RIGHT	1-0200104	SCORE® mobile bearing insert - Size 7 thickness 16 mm	1-0200647
SCORE® Femoral component - cementless HAP coated - S. 5 RIGHT	1-0200105	SCORE® mobile bearing insert - Size 7 thickness 20 mm	1-0200657
SCORE® Femoral component - cementless HAP coated - S. 6 RIGHT	1-0200106		
SCORE® Femoral component - cementless HAP coated - S. 7 RIGHT	1-0200107		
SCORE® Femoral component - cementless HAP coated - S. 1 LEFT	1-0200111	SCORE® Femoral component - cemented - S. 1 RIGHT	1-0200201
SCORE® Femoral component - cementless HAP coated - S. 2 LEFT	1-0200112	SCORE® Femoral component - cemented - S. 2 RIGHT	1-0200202
SCORE® Femoral component - cementless HAP coated - S. 3 LEFT	1-0200113	SCORE® Femoral component - cemented - S. 3 RIGHT	1-0200203
SCORE® Femoral component - cementless HAP coated - S. 4 LEFT	1-0200114	SCORE® Femoral component - cemented - S. 4 RIGHT	1-0200204
SCORE® Femoral component - cementless HAP coated - S. 5 LEFT	1-0200115	SCORE® Femoral component - cemented - S. 5 RIGHT	1-0200205
SCORE® Femoral component - cementless HAP coated - S. 6 LEFT	1-0200116	SCORE® Femoral component - cemented - S. 6 RIGHT	1-0200206
SCORE® Femoral component - cementless HAP coated - S. 7 LEFT	1-0200117	SCORE® Femoral component - cemented - S. 7 RIGHT	1-0200207
SCORE® Tibial base plate for mobile bearing insert - cementless HAP coated - S. 1	1-0200401	SCORE® Femoral component - cemented - S. 1 LEFT	1-0200211
SCORE® Tibial base plate for mobile bearing insert - cementless HAP coated - S. 2	1-0200402	SCORE® Femoral component - cemented - S. 2 LEFT	1-0200212
SCORE® Tibial base plate for mobile bearing insert - cementless HAP coated - S. 3	1-0200403	SCORE® Femoral component - cemented - S. 3 LEFT	1-0200213
SCORE® Tibial base plate for mobile bearing insert - cementless HAP coated - S. 4	1-0200404	SCORE® Femoral component - cemented - S. 4 LEFT	1-0200214
SCORE® Tibial base plate for mobile bearing insert - cementless HAP coated - S. 5	1-0200405	SCORE® Femoral component - cemented - S. 5 LEFT	1-0200215
SCORE® Tibial base plate for mobile bearing insert - cementless HAP coated - S. 6	1-0200406	SCORE® Femoral component - cemented - S. 6 LEFT	1-0200216
SCORE® Tibial base plate for mobile bearing insert - cementless HAP coated - S. 7	1-0200407	SCORE® Femoral component - cemented - S. 7 LEFT	1-0200217
SCORE® mobile bearing insert - Size 1 thickness 10 mm	1-0200611	SCORE® Tibial base plate for mobile bearing insert - cemented - S. 1	1-0200501
SCORE® mobile bearing insert - Size 1 thickness 12 mm	1-0200621	SCORE® Tibial base plate for mobile bearing insert - cemented - S. 2	1-0200502
SCORE® mobile bearing insert - Size 1 thickness 14 mm	1-0200631	SCORE® Tibial base plate for mobile bearing insert - cemented - S. 3	1-0200503
SCORE® mobile bearing insert - Size 1 thickness 16 mm	1-0200641	SCORE® Tibial base plate for mobile bearing insert - cemented - S. 4	1-0200504
SCORE® mobile bearing insert - Size 1 thickness 20 mm	1-0200651	SCORE® Tibial base plate for mobile bearing insert - cemented - S. 5	1-0200505
SCORE® mobile bearing insert - Size 2 thickness 10 mm	1-0200612	SCORE® Tibial base plate for mobile bearing insert - cemented - S. 6	1-0200506
SCORE® mobile bearing insert - Size 2 thickness 12 mm	1-0200622	SCORE® Tibial base plate for mobile bearing insert - cemented - S. 7	1-0200507
SCORE® mobile bearing insert - Size 2 thickness 14 mm	1-0200632		
SCORE® mobile bearing insert - Size 2 thickness 16 mm	1-0200642	SCORE® resurfacing patella - cemented - Ø 30 mm	1-0200830
SCORE® mobile bearing insert - Size 2 thickness 20 mm	1-0200652	SCORE® resurfacing patella - cemented - Ø 33 mm	1-0200833
SCORE® mobile bearing insert - Size 3 thickness 10 mm	1-0200613	SCORE® resurfacing patella - cemented - Ø 36 mm	1-0200836
SCORE® mobile bearing insert - Size 3 thickness 12 mm	1-0200623		
SCORE® mobile bearing insert - Size 3 thickness 14 mm	1-0200633	SCORE® inset patella - cemented - Ø 23 mm	1-0200923
SCORE® mobile bearing insert - Size 3 thickness 16 mm	1-0200643	SCORE® inset patella - cemented - Ø 26 mm	1-0200926
SCORE® mobile bearing insert - Size 3 thickness 20 mm	1-0200653	SCORE® inset patella - cemented - Ø 29 mm	1-0200929
SCORE® mobile bearing insert - Size 4 thickness 10 mm	1-0200614	SCORE® inset patella - cementless - Ø 23 mm	1-0202123
SCORE® mobile bearing insert - Size 4 thickness 12 mm	1-0200624	SCORE® inset patella - cementless - Ø 26 mm	1-0202126
SCORE® mobile bearing insert - Size 4 thickness 14 mm	1-0200634	SCORE® inset patella - cementless - Ø 29 mm	1-0202129
SCORE® mobile bearing insert - Size 4 thickness 16 mm	1-0200644		
SCORE® mobile bearing insert - Size 4 thickness 20 mm	1-0200654		
SCORE® mobile bearing insert - Size 5 thickness 10 mm	1-0200615		
SCORE® mobile bearing insert - Size 5 thickness 12 mm	1-0200625		
SCORE® mobile bearing insert - Size 5 thickness 14 mm	1-0200635		
SCORE® mobile bearing insert - Size 5 thickness 16 mm	1-0200645		
SCORE® mobile bearing insert - Size 5 thickness 20 mm	1-0200655		
SCORE® mobile bearing insert - Size 6 thickness 10 mm	1-0200616		
SCORE® mobile bearing insert - Size 6 thickness 12 mm	1-0200626		
SCORE® mobile bearing insert - Size 6 thickness 14 mm	1-0200636		
SCORE® mobile bearing insert - Size 6 thickness 16 mm	1-0200646		
SCORE® mobile bearing insert - Size 6 thickness 20 mm	1-0200656		

OPTIONAL:

Tibial stems, offset connectors and half wedges available on request.

Distributed by:

