



CANNULATED SCREW & WIRE
IMPLANTS & INSTRUMENTS



• **306** | 4.0mm Cannulated Screw (Short Thread)

MATERIAL - Titanium / Stainless Steel
 LENGTH - 12mm to 50mm (2mm Increment)
 50mm to 70mm (5mm Increment)



• **307** | 4.0mm Cannulated Screw (Full Thread)

MATERIAL - Titanium / Stainless Steel
 LENGTH - 12mm to 50mm (2mm Increment)
 50mm to 70mm (5mm Increment)



• **310** | 6.5mm Cannulated Screw (16mm Thread)

MATERIAL - Titanium / Stainless Steel
 LENGTH - 25mm to 120mm (5mm Increment)



• **311** | 6.5mm Cannulated Screw (32mm Thread)

MATERIAL - Titanium / Stainless Steel
 LENGTH - 40mm to 120mm (5mm Increment)



• **312** | 6.5mm Cannulated Screw (Full Thread)

MATERIAL - Titanium / Stainless Steel
 LENGTH - 25mm to 120mm (5mm Increment)



• **313** | 7.0mm Cannulated Screw (16mm Thread)

MATERIAL - Titanium / Stainless Steel
 LENGTH - 25mm to 120mm (5mm Increment)



• **314** | 7.0mm Cannulated Screw (32mm Thread)

MATERIAL - Titanium / Stainless Steel
 LENGTH - 40mm to 130mm (5mm Increment)



• **319** | 7.0mm Cannulated Screw (Full Thread)

MATERIAL - Titanium / Stainless Steel
 LENGTH - 25mm to 130mm (5mm Increment)



• 656.125 | Parallel Drill Guide 1.25mm



• 657.032 | Drill Bit Cannulated 3.2mm



• 658.040 | Tap Cannulated for 4.0mm Screws



• 659.025 | Screw Driver Cannulated 2.5mm Tip



• 670.125 | Direct Measuring Device for 1.25mm Guide Wire



• 671.125 | Guide Wire 1.25mm x 225mm



• 656.200 | Parallel Drill Guide 2.0mm



• 657.045 | Drill Bit Cannulated 4.5mm

Instruments



- **658.065** | Tap Cannulated for 6.5mm Screws
- **658.070** | Tap Cannulated for 7.0mm Screws



- **659.035** | Screw Driver Cannulated 3.5mm Tip



- **670.200** | Direct Measuring Device for 2.0mm Guide Wire



- **671.180** | Guide Wire 1.8mm x 225mm

SAGC.13 4.0mm Cannulated Screw and instrument Set



Implants

306	4.0mm Cannulated Screw (Short Thread) 12mm, 14mm, 16mm, 18mm, 20mm, 22mm, 24mm, 26mm, 28mm, 30mm, 32mm, 34mm, 36mm, 38mm, 40mm, 45mm, 50mm, 55mm, 60mm, 65mm, 70mm	2 Each
307	4.0mm Cannulated Screw (Full Thread) 12mm, 14mm, 16mm, 18mm, 20mm, 22mm, 24mm, 26mm, 28mm, 30mm, 32mm, 34mm, 36mm, 38mm, 40mm, 45mm, 50mm, 55mm, 60mm, 65mm, 70mm	2 Each

Instruments

656.125	Parallel Drill Guide 1.25mm	1 Each
657.032	Drill Bit Cannulated 3.2mm	1 Each
658.040	Tap Cannulated for 4.0mm Screws	1 Each
659.025	Screw Driver Cannulated 2.5mm Tip	1 Each
670.125	Direct Measuring Device for 1.25mm Guide Wire	1 Each
671.125	Guide Wire 1.25mm x 225mm	3 Each

SAGC.14 6.5mm Cannulated Screw and instrument Set



Implants

310	6.5mm Cannulated Screw (16mm Thread) 35mm, 40mm, 45mm, 50mm, 55mm, 60mm, 65mm, 70mm, 75mm, 80mm, 85mm, 90mm, 95mm, 100mm, 105mm, 110mm, 115mm, 120mm	2 Each
311	6.5mm Cannulated Screw (32mm Thread) 45mm, 50mm, 55mm, 60mm, 65mm, 70mm, 75mm, 80mm, 85mm, 90mm, 95mm, 100mm, 105mm, 110mm, 115mm, 120mm	2 Each
312	6.5mm Cannulated Screw (Full Thread) 25mm, 30mm, 35mm, 40mm, 45mm, 50mm, 55mm, 60mm, 65mm, 70mm, 75mm, 80mm, 85mm, 90mm, 95mm, 100mm, 105mm, 110mm, 115mm, 120mm	2 Each

Instruments

656.200	Parallel Drill Guide 2.0mm	1 Each
657.045	Drill Bit Cannulated 4.5mm	1 Each
658.065	Tap Cannulated for 6.5mm Screws	1 Each
659.035	Screw Driver Cannulated 3.5mm Tip	1 Each
670.200	Direct Measuring Device for 2.0mm Guide Wire	1 Each
671.180	Guide Wire 1.8mm x 225mm	3 Each



Implants

- 313 7.0mm Cannulated Screw (16mm Thread)
30mm, 35mm, 40mm, 45mm, 50mm, 55mm,
60mm, 65mm, 70mm, 75mm, 80mm, 85mm,
90mm, 95mm, 100mm, 105mm, 110mm,
115mm, 120mm **2 Each**
- 314 7.0mm Cannulated Screw (32mm Thread)
45mm, 50mm, 55mm, 60mm, 65mm, 70mm,
75mm, 80mm, 85mm, 90mm, 95mm, 100mm,
105mm, 110mm, 115mm, 120mm, 125mm,
130mm **2 Each**
- 319 7.0mm Cannulated Screw (Full Thread)
25mm, 30mm, 35mm, 40mm, 45mm, 50mm,
55mm, 60mm, 65mm, 70mm, 75mm, 80mm,
85mm, 90mm, 95mm, 100mm, 105mm, 110mm,
115mm, 120mm, 125mm, 130mm **2 Each**

Instruments

- 656.200 Parallel Drill Guide 2.0mm **1 Each**
- 657.045 Drill Bit Cannulated 4.5mm **1 Each**
- 658.070 Tap Cannulated for 7.0mm Screws **1 Each**
- 659.035 Screw Driver Cannulated 3.5mm Tip **1 Each**
- 670.200 Direct Measuring Device for 2.0mm Guide Wire **1 Each**
- 671.180 Guide Wire 1.8mm x 225mm **3 Each**

Implants



• **326** | Wire Spool

Material - **Stainless Steel**

Size - 16swg, 18swg, 20swg, 22swg, 24swg, 26swg, 28swg, 30swg



• **328** | **Kirschner Wire (K Wire) Double Side Trocar Tip**

Material - Titanium / **Stainless Steel**

Diameter - 0.8mm, 1.0mm, 1.25mm, 1.5mm, 1.6mm, 1.8mm, 2.0mm, 2.5mm, 3.0mm

Length - 100mm, 150mm, 175mm, 200mm, 225mm, 300mm,

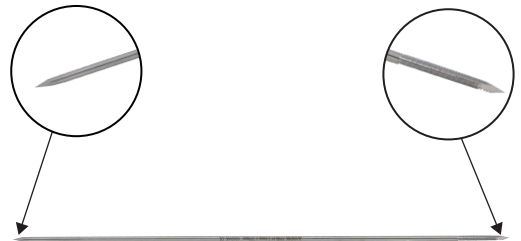


• **329** | **Kirschner Wire (K Wire) Single Side Trocar Tip**

Material - Titanium / Stainless Steel

Diameter - 0.8mm, 1.0mm, 1.25mm, 1.5mm, 1.6mm, 1.8mm, 2.0mm, 2.5mm, 3.0mm

Length - 100mm, 150mm, 200mm, 225mm, 300mm



• **330** | **Kirschner Wire (K Wire) Single Side Thread Tip**

Material - Titanium / Stainless Steel

Diameter - 1.5mm, 1.6mm, 1.8mm, 2.0mm, 2.5mm, 3.0mm, 3.5mm, 4.0mm, 4.5mm

Length - 100mm, 150mm, 225mm



• **331** | **Kirschner Wire (K Wire) Double Side Thread Tip**

Material - Stainless Steel

Diameter - 1.5mm, 1.6mm, 1.8mm, 2.0mm, 2.5mm, 3.0mm

Length - 150mm, 225mm



• 660.001 | Wire Passer Small Dia.45mm



• 660.002 | Wire Passer Large Dia.70mm



• 660.003 | Wire Tightener with Tow Pegs



• 660.004 | Wire Tightener/Twister



• 660.005 | T Handle With Chuck & Key



• 660.006 | Wire Cutter Large



• 660.007 | Gigli Saw Wire



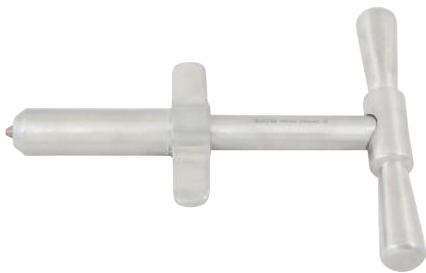
• 660.008 | Gigli Saw Introducer



• 660.009 | Gigli Saw Handle Pair



• 660.010 | Triple Drill Guide 2.0mm with 3hole Opposite side 1hole



• 660.012 | K Wire Introducer



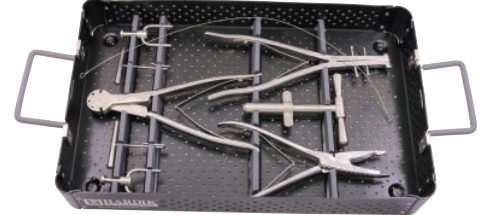
• 660.013 | K Wire Bender Iron



• 660.014 | Universal Wire Cutter / Bender / Pliers



• 660.015 | Wire Twister Circular



Instruments

660.001	Wire Passer Small Dia.45mm	1 Each
660.002	Wire Passer Large Dia.70mm	1 Each
660.003	Wire Tightener with Tow Pegs	1 Each
660.004	Wire Tightener/Twister	1 Each
660.005	T Handle With Chuck & Key	1 Each
660.006	Wire Cutter Large	1 Each
660.007	Gigli Saw Wire	1 Each
660.008	Gigli Saw Introducer	1 Each
660.009	Gigli Saw Handle Pair	1 Each
660.010	Triple Drill Guide 2.0mm with 3hole Opposite side 1hole	1 Each
660.012	K Wire Introducer	1 Each
660.013	K Wire Bender Iron	1 Each
660.014	Universal Wire Cutter/Bender/Pliers	1 Each
660.015	Wire Twister Circular	1 Each