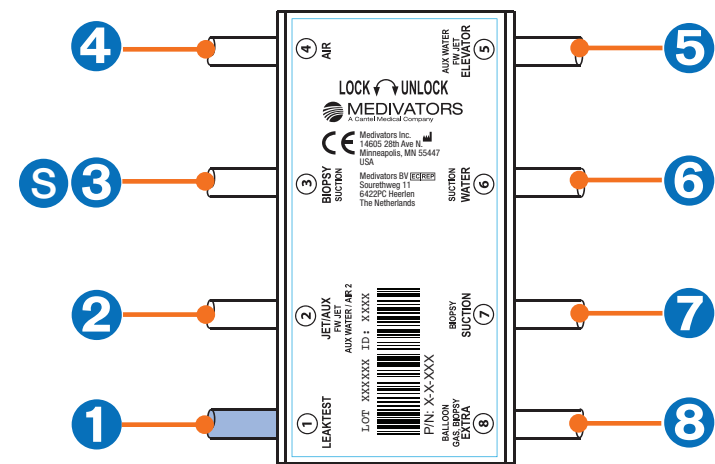


HOOKUP DIAGRAM



Each Hookup is comprised of multiple ports and connector assemblies. Each port is labeled with a Port ID number (circled). This same number also identifies the corresponding Connector Assembly. Each Connector Assembly is fitted with a specific endoscope connector.

CONNECTOR ASSEMBLY IDENTIFICATION CHART

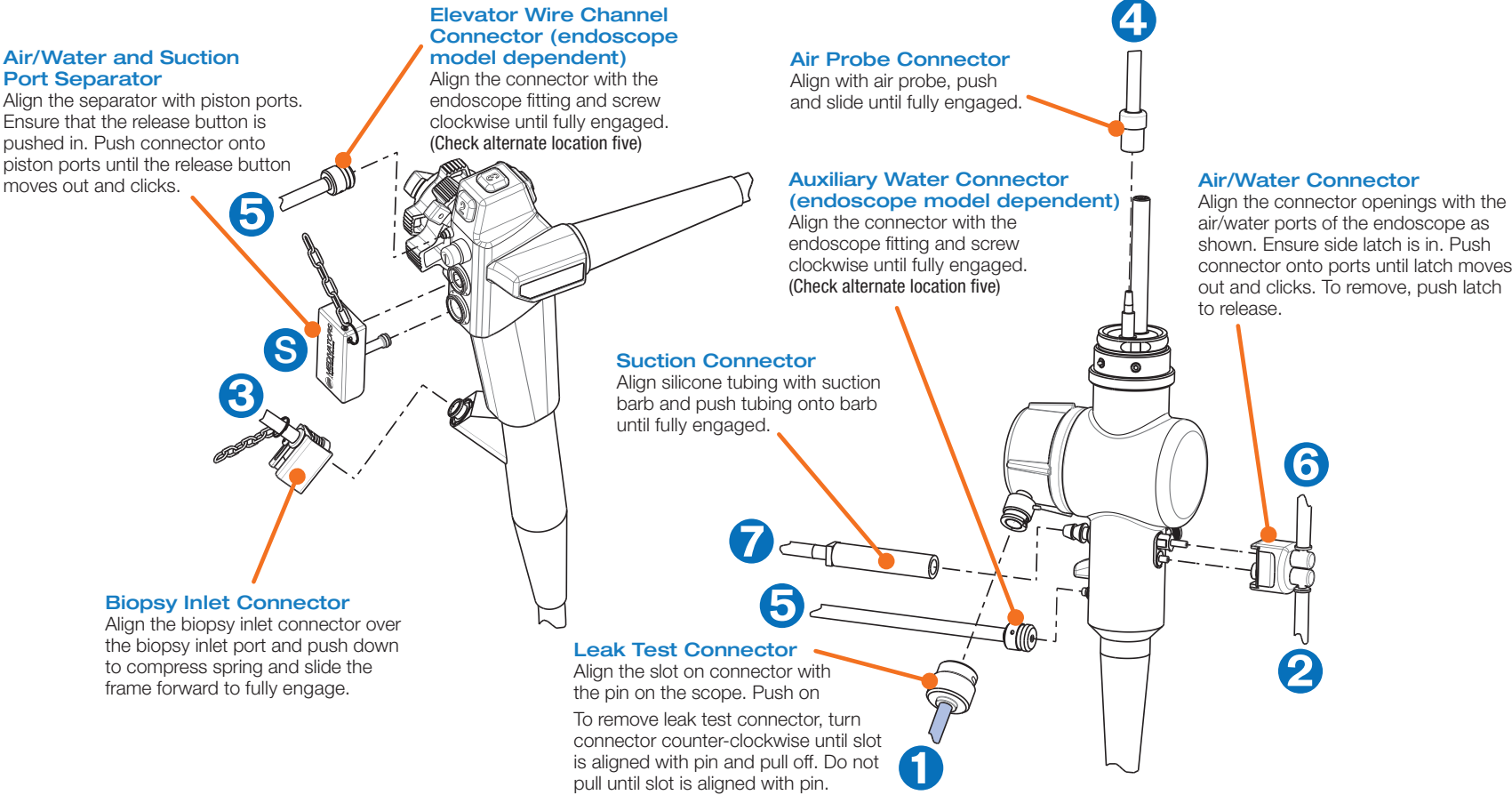
Port ID	Port Name	Connector Assembly Description	Order Number
1	LEAK TEST	Leak Test Connector Assembly	H28611-1
2	JET/AUX	Air/Water Connector Assembly	H28611-26
3	BIOPSY	Biopsy Inlet Connector Assembly	H28611-3
4	AIR	Air Probe Connector Assembly	H28611-4
5	ELEVATOR	Elevator Wire/Auxiliary Channel Connector Assembly	H28611-5
6	WATER	Air/Water Connector Assembly	H28611-26
7	SUCTION	Suction Connector Assembly	H28611-7
8	EXTRA	N/A	N/A
S	N/A	Air/Water & Suction Port Separator	78400-930

If a Connector Assembly needs replacement, locate the port number/name and use the corresponding order number found in the chart above. Connector Assemblies are specific to individual hookups.



READ ALL INSTRUCTIONS PRIOR TO CONNECTION

Locate the endoscope port and follow the instructions for attaching the corresponding Endoscope Connector. All connectors must be attached.



DESIGNATED HOOKUP FOR THE FOLLOWING OLYMPUS® ENDOSCOPES\*:

CF-1T140I	CF-H170L	CF-H190I	CF-Q145I	CF-Q160L	GIF-1T140	GIF-H180J	GIF-XK240	JF-260V	PCF-H190L	PCF-Q260J	TJF-145	TJF-260V
CF-1T140L	CF-H180AI	CF-H190L	CF-Q145L	CF-Q160S	GIF-1T140L	GIF-H190	GIF-XTQ160	PCF-H180AI	PCF-H290I	PCF-Q260JI	TJF-160F	
CF-FH260AZI	CF-H180AL	CF-HQ190I	CF-Q160	CF-Q165I	GIF-1T160	GIF-H190L	JF-140	PCF-H180AL	PCF-H290L	PCF-Q260JL	TJF-160R	
CF-FH260AZL	CF-H180DI	CF-HQ190L	CF-Q160AI	CF-Q165L	GIF-1T240	GIF-HQ190	JF-140F	PCF-H190DI	PCF-Q180AI	TJF-140	TJF-160VF	
SIF-Y0019	CF-H185I	CF-HQ290I	CF-Q160AL	CF-Q180AI	GIF-1TH190	GIF-HQ290	JF-140R	PCF-H190DL	PCF-Q180AL	TJF-140F	TJF-160VR	
CF-H170I	CF-H185L	CF-HQ290L	CF-Q160I	CF-Q180AL	GIF-1TQ160	GIF-Q260J	JF-240	PCF-H190I	PCF-Q260AZI	TJF-140R	TJF-240	

\* This list of corresponding endoscope models is subject to change without notice. For a full list, please go to: [www.medivators.com/hookuplookup](http://www.medivators.com/hookuplookup)

If you have any questions regarding this hookup, in the U.S., please contact Medivators Technical Support at 1-800-444-4729. Outside the U.S., please contact your Medivators representative.

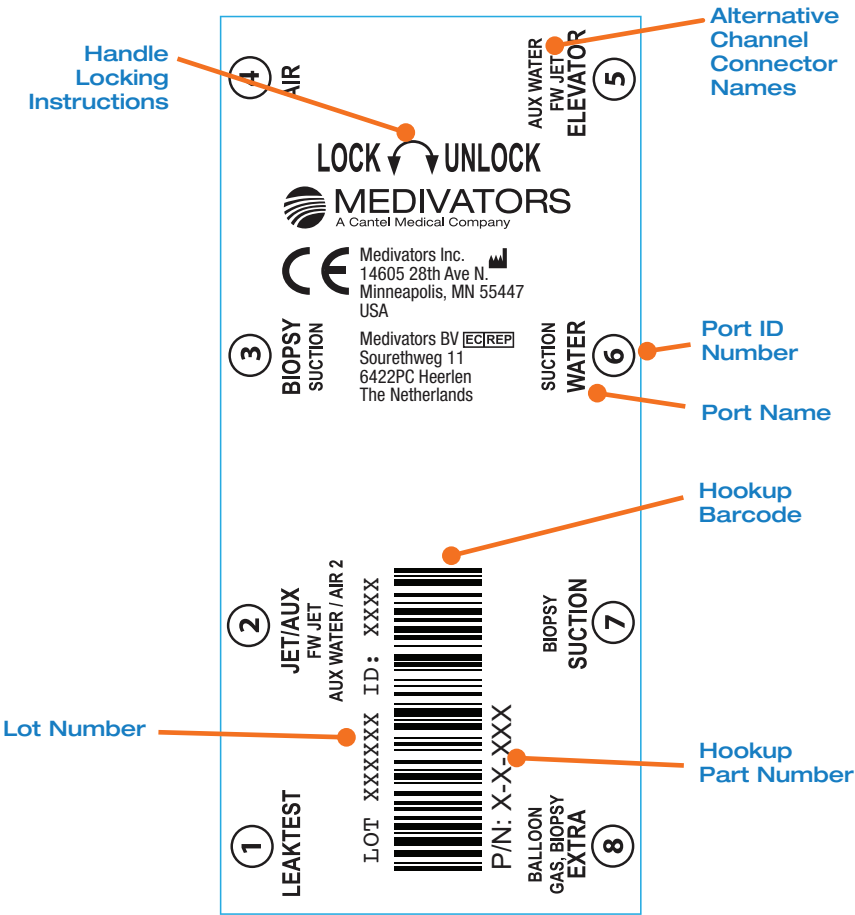
Representative endoscope for illustrative purposes only. For exact port locations, refer to endoscope manufacturer's instruction guide.



Ensure proper alignment of all connectors with the endoscope mating parts prior to attachment.

HOOKUP CONNECTOR BLOCK LABEL

The Hookup Connector Block Label contains useful information for quick reference.



**Handle Locking Instructions** - insert block onto basin channel manifold and move handle to the left to lock. Move to the right to unlock.

**Lot Number** - identifies date of manufacture.

**Hookup Part Number** - identifies hookup.

**Hookup Barcode** - barcode of part number.

**Port Name** - identifier of port location in ADVANTAGE system. Error logs identify issues using these names. Also identifier of Connector Assembly replacements for older model hookups.

**Port ID Number** - identifier for Connector Assembly replacements. Not found on older model hookups.

**Alternative Channel Connector Names** - connector names vary depending on specific endoscope channel configuration.

WARNINGS & CAUTIONS



This hookup is intended for connection only with the specific endoscope models identified in the appropriate MEDIVATORS online hookup guide. Use of this hookup with endoscopes other than those specified by the hookup application guide may result in inadequate HLD.

Users operating MEDIVATORS AERs and hookups must be trained and competent in the understanding of endoscope channel systems.

Prior to reprocessing, users must verify that the hookup used contains connections for all appropriate channels that require a separate reprocessing connection according to the hookup instructions.

All connectors and adapters must remain firmly attached and unrestricted for the entire disinfection cycle to ensure adequate HLD. Users must inspect the endoscope and hookup combination to verify proper connection and flow.

Modifications or repairs to hookups which do not correspond to the manufacturer's specifications may result in inadequate HLD and/or damage to endoscopes.

Failure to properly clean and prepare endoscope for immersion prior to hookup connection may result in inadequate HLD and/or damage to the endoscope.

Endoscopes must be inspected for damage and verified to be in proper working order prior to hookup connection. Connection of hookups to damaged endoscopes or endoscopes with obstructed/restricted channels could result in inadequate HLD.

Manual leak testing must be carried out in accordance with manufacturer's recommendations prior to reprocessing.

Install all necessary waterproof caps, plugs and cleaning adapters prior to immersion.

Do NOT autoclave MEDIVATORS hookups.

Medivators makes no claim on high-level disinfection efficacy when these reprocessing instructions are not followed, or when this hookup kit is applied to endoscopes other than those specified in the online interactive hookup guide.

Avoid biological contamination. Always wear personal protective equipment when handling endoscopes.

MEDIVATORS™ and ADVANTAGE™ are trademarks of Medivators Inc.  
ISA™ is a trademark of Cantel Medical (Italy) S.r.l.  
All company or product names referenced are trademarks of their respective owners.



Medivators Inc.  
14605 28th Avenue North  
Minneapolis, MN  
55447-4822 USA  
Tel: +1.763.553.3300  
Fax: +1.763.553.3387

Medivators BV  
Sourethweg 11  
6422 PC Heerlen  
The Netherlands  
Tel: +31.45.5.471.471  
Fax: +31.45.5.429.595

Cantel (France) SAS  
3 rue du pré fermé  
31200 Toulouse  
France  
Tel: +33 (0) 5.61.245.275  
Fax: +33 (0) 5.61.247.001

Cantel Medical (Italy) S.r.l.  
Via Laurentina, 169  
00071 Pomezia (RM) Italia  
Tel.: +39 06 9145399  
Fax: +39 06 9146099  
www.cantelmedical.it

Cantel (UK) Limited  
Campfield Road  
Shoeburyness, Essex  
SS3 9BX,  
United Kingdom  
Tel: +44 (0) 1702.291878  
Fax: +44 (0) 1702.290013

Cantel Medical Asia/Pacific Pte. Ltd.  
1A International Business Park  
#05-01 Singapore 609933  
Tel: +65.6227.9698  
Fax: +65.6225.6848

Cantel Medical Devices (China) Co. Ltd.  
Unit 804-805, Innov Tower Block A,  
Hongmei Road, Xuhui 200233 Shanghai  
Tel: +86 21 60161380  
Fax: +86 21 61210913