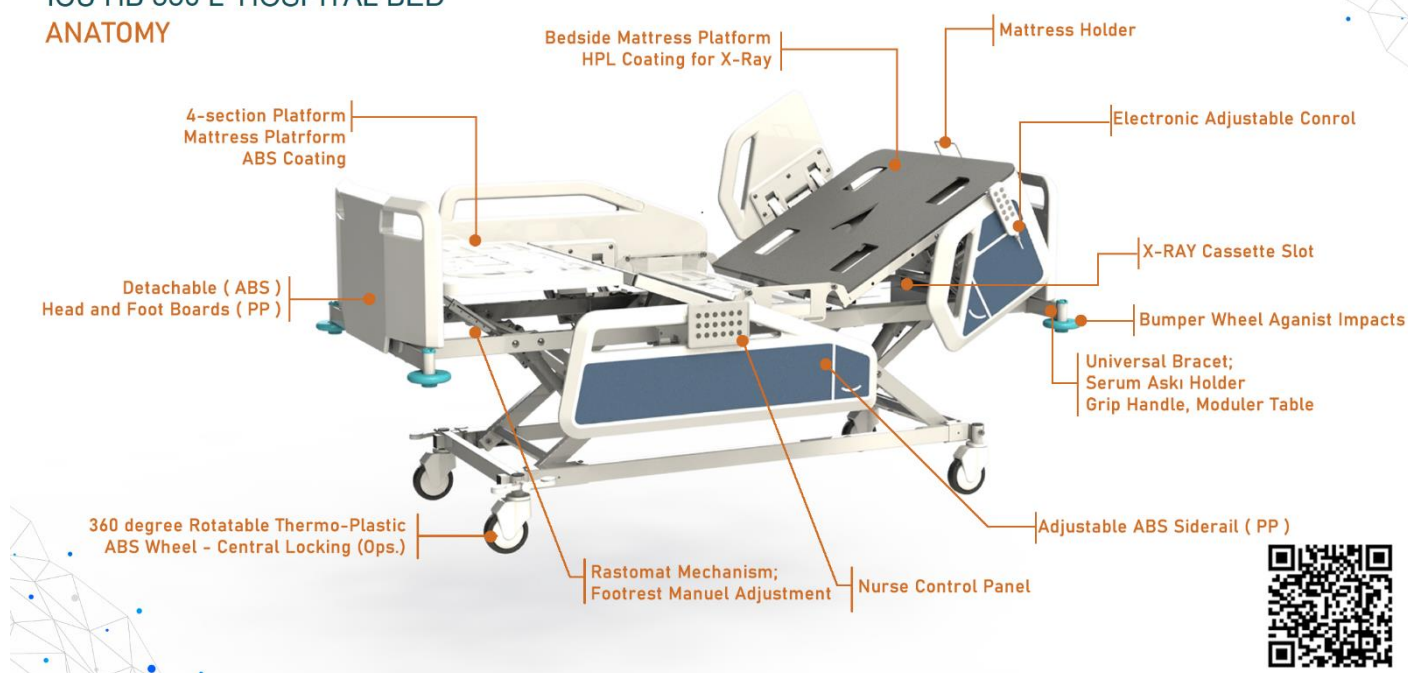


## PRODUCT BROSHURE

### ICU HB 550 L HOSPITAL BED LATERAL TILT FUNCTION

ALATURCA MEDICAL  
DESIGN  
ACADEMY PRESENTS

PRODUCT CODE  
ICU HB 550 L HOSPITAL BED  
ANATOMY



### ICU HB 550 L 5+1 Adjustment Lateral Tilt Function Fully Electrical Control

**SUITABLE FOR:** Intensive Care Units, ATI Ward's , Clinics, Long term cares, Nursing, Home care



**Construction (Body) :** Made of steel construction. With gas metal arch welding technique, It provides strong and durable body. All metal construction part's is designed with the most advanced computer programs. and passed the security tests successfully. user safety is the our main criterion. A modular, expandable and replaceable Alaturca **ICU HB 550 L** construction carries you to health

**Painting and Coating :** Construction parts Firstly, surface improvement (metal grinding), surface cleaning, (acid application), and phosphate coating processes are performed. Then it is painted with the highest quality epoxy powder paint at 180 degrees high temperature. Durability, resistance to scratching and smooth surface at high quality is under guarantee. Therefore, It keeps the look like the first day. Eco-friendly smooth surfaces help you take care of your beds at ease.

**Adjustment Control :** Four Pcs 6000 N/m<sup>3</sup> power motors make main movements. It makes two motor height movements (between 450 - 800 mm), trendelenburg and anti trendelenburg movements (16°). Lateral tilt function (15°) make with 6000 N/m<sup>3</sup> power motor. The head rest part moves with one motor (0-70°). And the knee rest part moves with one motor (0-35°) . Also foot rest adjustable by ratchet mechanism. Electric Current protected motors are equipped with hole sensors. In addition, the control box provides 24 V DC for user safety. Supported by battery against power outages. Adjustments made via hand remote control. HB 550 L is IP 54 and optional IPX4 or IP 66 protection class. Electric hand control functions can be locked from the Nurse control panel. There is a CPR function button on the nurse control panel. Additionally, the height function can also be operated via foot pedal.



NURSE CONTROL PANEL



FOOT CONTROL PANEL



REMOTE CONTROL PANEL

**Universal Brackets :** They are placed at the four corner of our beds for accessories needed during the recovery of patients. Espacially for accessories such as IV pole ( infusion stand) with telescopic height adjustable ihfusion stand, urine holder , Oxygen tube, lifting pole and so on. It provides ease of using accesories without any mess.

**Mattress Holders:** For beds with adjustment ability, It prevents the mattress from sliding. They are installed on back rest and foot rest, thus regardless in which position the bed is, the mattress sticks with the platform.

**Protection Bumpers:** They are placed at the four corner of our beds for protections againts to walls and important equipments from undesired hits during the mobilisation. The bumpers are 360° degree rotatable, 125 mm. diameter and made of soft material.

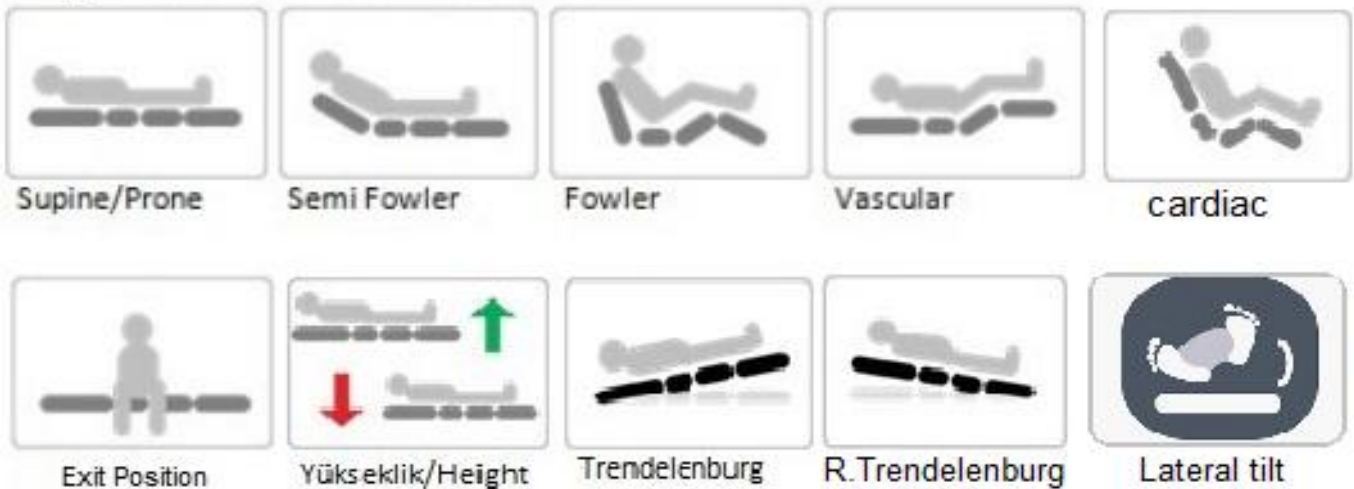
**Installation Power:** Power inputs suitable with 110 / 220V AC, also with plug & run feature you

Don't need any installation. Motors installed on the beds working under 40 dB noise. It's considered as silence as in library.

**Supported Care Positions:**

Patient positioning involves properly maintaining a patient's neutral body alignment by preventing hyperextension and extreme lateral rotation to prevent complications of immobility and injury. Positioning patients is an essential aspect of nursing practice and a responsibility of the registered nurse. In surgery, specimen collection, or other treatments, proper patient positioning provides optimal exposure to the surgical/treatment site and maintenance of the patient's dignity by controlling unnecessary exposure. In most settings, proper positioning of patients provides airway management and ventilation, maintains body alignment, and provides physiologic safety. The **ICU HB 550 L** is equipped with intensive care functions. It is recommended to use with the nurse control panel. Some supported functions must be used under the supervision of healthcare personnel. The use of some or all functions can be locked with the nurse control panel.

**Optional Weighing Scale System:** HB 500 and HB 400 series optional patient weighing systems can be added. This option must be specified before production. The system makes measurements from 4 points close to the wheels, using by four loadcells. It makes a precise measurement by measuring the stress in metal construction with an accuracy of 4.25/1000. It is read digitally from the LCD screen remote control and the Nurse control panel.

**Supported Care Positions:**

ICU HB 550 L Serie Hospital Beds are Designed with modular system And **configureable** :

- Frame System Metal construction (from 3 motorized HB to 4 or 5 motorized Hospital Bed)
- Head and foot boards (Metal-wood, PP Plastic's)
- Side rails System (Telescopic metal, Foldable Alluminium, or PP Plastic's )
- Mattress Platform System (HPL, Abs Plastic, Grill and Metal)
- Wheels Sizes and brake system (Metal 100 mm, ABS 125, Central Brake 125/150 mm )

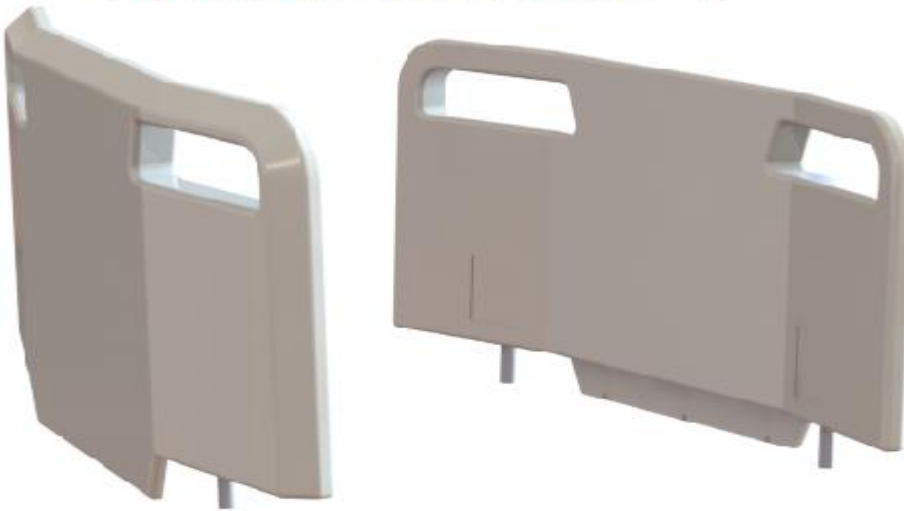
You can create and change the all components , **before purchasing. and during use. And after use.**





**PP Plastic Head & Foot Boards (EVRIM 05)**

PP plastic side head and foot boards are a design that complies with IEC 60601-52 safety standards. Designed by Alaturca Academy. It is ergonomic and useful. Made of antibacterial PP plastic material. Made in Turkey.

**EVRIM HEAD & FOOT BOARD 05****PP Plastic Side Rails (EVRIM 005)**

PP plastic side rails are a design that complies with IEC 60601-52 safety standards. Designed by Alaturca Academy. It is ergonomic and useful. Made of antibacterial PP plastic material. All components are made in Turkey. It is used with the universal guardrail mechanism. Operates smoothly and silently with the special gas spring. It works in comfort and safety.

## EVIRIM SIDE RAILS 005



**Mattress Platform:** 4 sections, 3 adjustable platform consist adjustments of backrest 70°, kneerest 35° by motor and footrest 45° by ratchet mechanism. The platform has 90 cm width and 190cm length for comfortable recovery.

Mattress Platform made from special anti bacterial ABS plastic by thermo vacuom system. The middle fixed part, the movable knee part and the mechanical movable foot part are made of ABS Plastic. It is produced in Turkey with our special mold designs thermo-vacuom aluminium mold. Back rest part is designed for radiological prosses. Made from radiolucent materials CDF / HPL compact laminate. Also Back section to have frame for radiological cassette/detector 45 x 43 cm. size. All mattress platform decks are provides ease of hygiene and comfort. can be washed and wiped.

## G : MESH



Mesh platform is a choice for perfect air ventilation. It is robust and durable thanks to its epoxy coated paint. Fixed to the frame with welding.

## T : TRAPEZE



Trapeze platform can be a choice for normal weight and heavy patient for its bearing strength. Trapeze platform provides ease for cleaning because of its shape. Fixed to the frame with welding.

## M : METAL PLATFORM



Plain metal platform is economic and basic choice. It is easy to clean, durable and smooth surface. It contains air ventilation holes.

## A : ABS



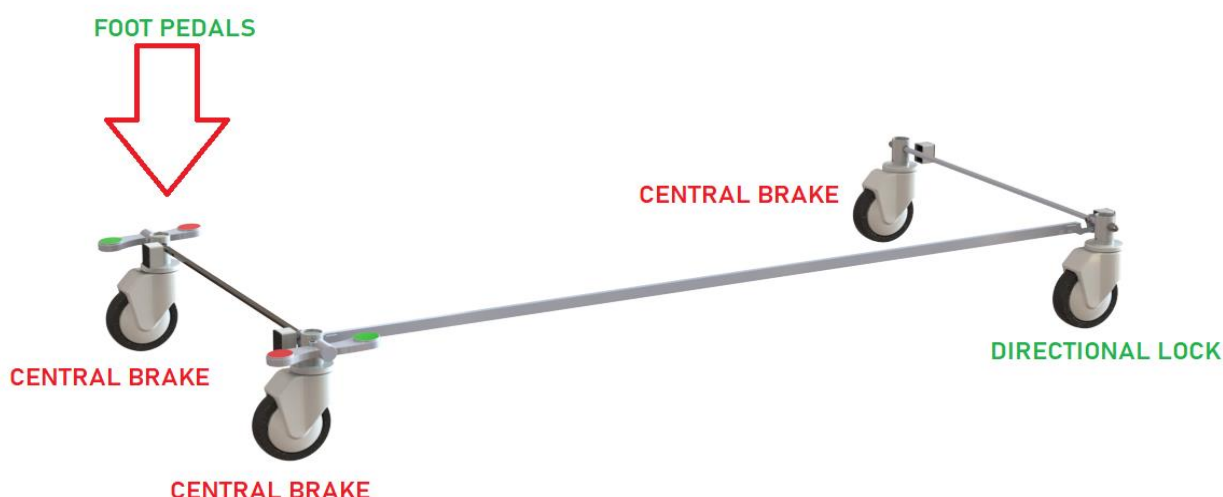
ABS platform is detachable, easy to clean, durable, light weight and practical for maintenance. Non-breakable thanks to its flexible and strong structure.

## H : HPL



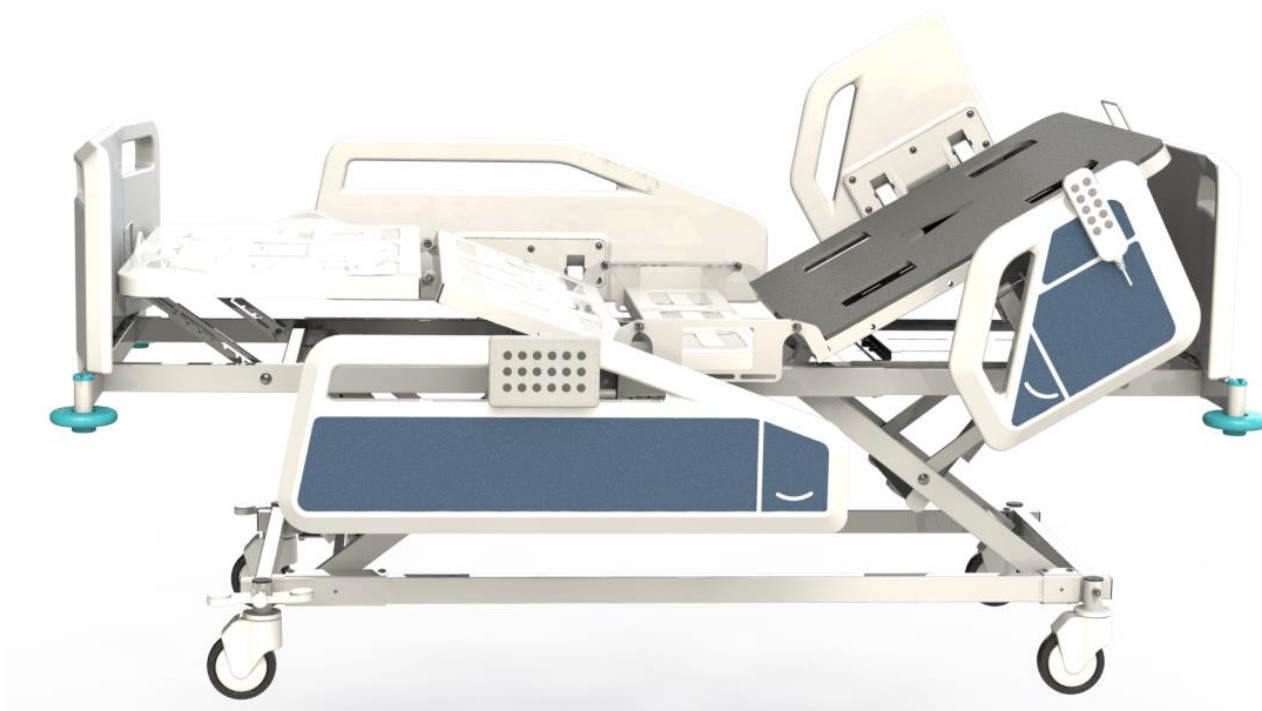
Compact laminant platform is heavy duty, non-scratchable, fire-proof, anti-dust, dirt-proof and easy to clean. It is fixed to the frame.

**Mobilization:** The bed comes with a lower deck frame. It meets expectations of mobilisation as either diagonal lock and central lock can be added as option Central lock enables you to lock all castor from single point. Also steering castor is available for linear mobilisation of beds. 5th castor option In terms of being practical It performs at maximum level while turning corners especially in busy times. The lower deck frame designed with minimum 125mm space underbed clearance to ensure patient lift and overbed table to be used comfortably.



**Breaking ( Locking):** ICU HB 550 L Beds equipped with central brake and directional lockable, 125 mm diameter plastic four castors. Plastic covered castors are Made of Turkey.





## TECHNICAL SPECIFICATION:

— Universal control box: 24 VDC 5A or 12 VDC 10A

— GUARD: IP 54

External dimension : 210 × 105 cm

Mattress platform : 4 section, electric adjustable

Mattress platform dimensions: 190 × 90 cm

Electric height adjustment : 45 – 80 cm

Electric backrest adjustment: 0 – 70°

Electric thighrest adjustment: 0 – 35°

TR / ATR: 16° – 16°

Lateral tilt adjustment : 15° – 15°

Bed weight (as specified): 135 kg

Safe loading capacity : 250 kg.

Standards: ISO 13485 , CE , IEC 60601-2-52

UDI-DI No: 8683255452064 AE