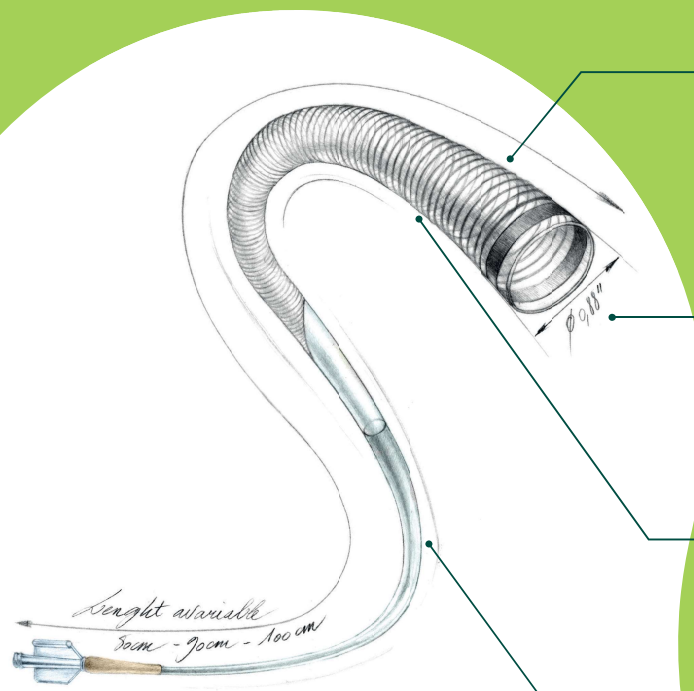


BALLAST

LONG SHEATH

Long sheath 6F .088

Designed to provide support for rapid introduction of interventional devices into the peripheral, coronary and neuro vasculature.



progressively softer
coiled distal tip &
small O.D.

large I.D. .088"

get there

Smooth navigation

Soft delivery of devices

thanks to the progressively softer coiled distal tip & small O.D.

Lubricity & trackability

enhanced by the extended hydrophilic coating (20 cm on the distal part)

Broad treatment options

allowed by the various lengths and large .088" I.D.

stay there

Solid kink resistance

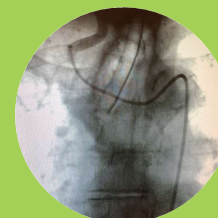
Support* distal part

given by its progressively coiled distal tip construction

Optimal support & pushability

High* proximal support

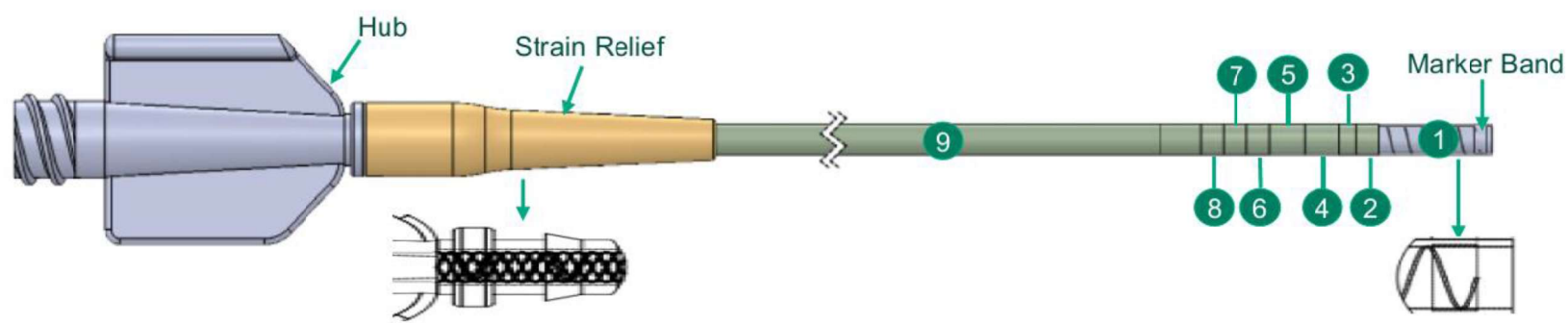
provided by the coiled and braided reinforced proximal segment



access treatment

* According to bench test
(Internal data)

Design

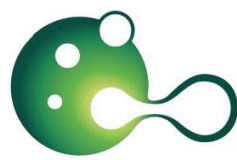


Ballast is composed of the following main components:

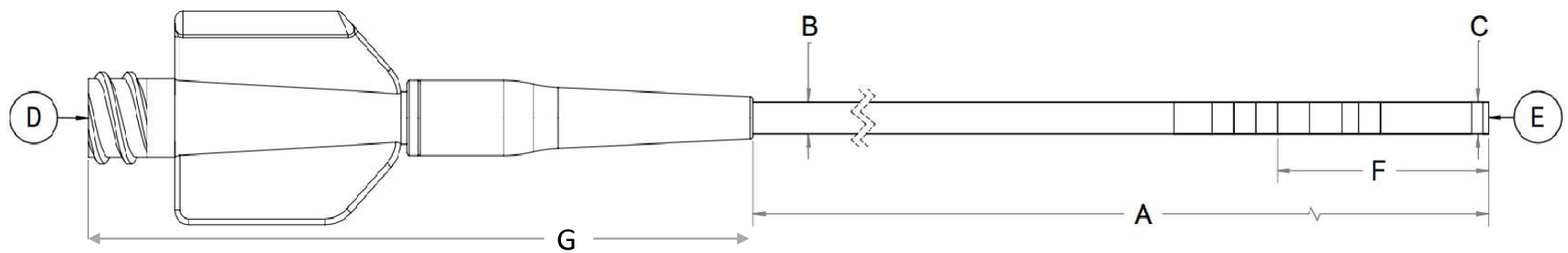
- 9 steps of suppleness along the length
- 9 cm of distal winded coil
- Distal marker band: 1mm Platinum / Iridum
- PTFE inner tubing

 pct. 2

The content of this document, in particular data, information, trademarks and logos are BALT EXTRUSION SAS's sole property. Consequently, all representation and/or reproduction, whether in part or in full, is forbidden and would be considered a violation of BALT EXTRUSION SAS's copyrights and other intellectual proprietary rights ©2022 BALT EXTRUSION, all rights reserved. This document with associated pictures is non-contractual and are solely dedicated to BALT's distributors. The products commercialized by BALT EXTRUSION SAS shall exclusively be used in accordance with the package insert which have been updated and included in the boxes. The distribution, the sale and the use of BALT's products is under distributor's liability.



Specifications and range detail



	A	B	C	D	E	F	G
Part Number	Usable Length	Proximal OD	Distal OD	Proximal ID	Distal ID	Hydrophilic Coating	Hub length
BALLAST80	80 cm	0.106"	0.100" Over a length of 9 cm	0.088"	0.088"	20 cm	6 cm
BALLAST90	90 cm						
BALLAST100	100 cm						
BALLAST105	105 cm						

pct. 3

pct. 4

pct. 5

pct. 6

pct. 7

pct. 8

The content of this document, in particular data, information, trademarks and logos are BALT EXTRUSION SAS's sole property. Consequently, all representation and/or reproduction, whether in part or in full, is forbidden and would be considered a violation of BALT EXTRUSION SAS's copyrights and other intellectual proprietary rights ©2022 BALT EXTRUSION, all rights reserved. This document with associated pictures is non-contractual and are solely dedicated to BALT's distributors. The products commercialized by BALT EXTRUSION SAS hall exclusively be used in accordance with the package insert which have been updated and included in the boxes. The distribution, the sale and the use of BALT's products is under distributor's liability.





Ballast™ 088 Long Sheath Instructions for Use

DEVICE DESCRIPTION

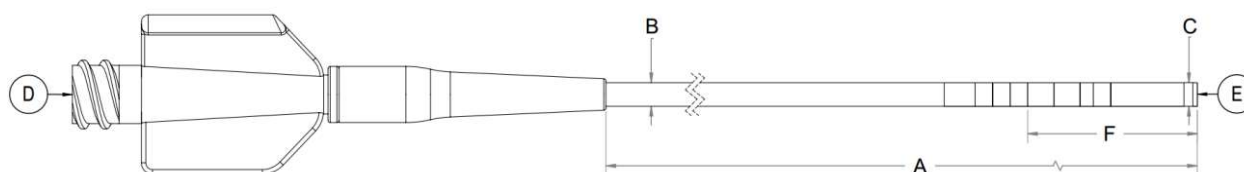
The Ballast™ 088 Long Sheath is a single lumen, braid-reinforced, variable stiffness catheter with a radiopaque zone on the distal end and a luer hub on the proximal end. The Ballast 088 Long Sheath dimensions are included on the individual device label and listed below. The Ballast 088 Long Sheath is compatible with introducer sheaths appropriately sized for the outer diameter of the Ballast 088 Long Sheath.

The catheter is provided sterile, non-pyrogenic, and is intended for single use only.

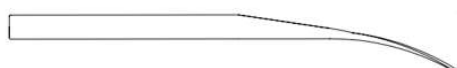
← pct.1

The Ballast 088 Long Sheath includes the Ballast 088 Long Sheath, Dilator, Introducer Sheath, 9F Rotating Hemostasis Valve (RHV) and 8F Hemostasis Valve Adapter (HVA).

The Dilator facilitates the percutaneous entry of the Ballast 088 Long Sheath by forming an atraumatic transition of distal sheath through the skin and subcutaneous tissue to the vessel while protecting the Ballast distal diameter integrity. The distal portion of the Ballast 088 Long Sheath is covered with a hydrophilic coating to aid in reducing friction. The hydrophilic coating length is provided in the table below.



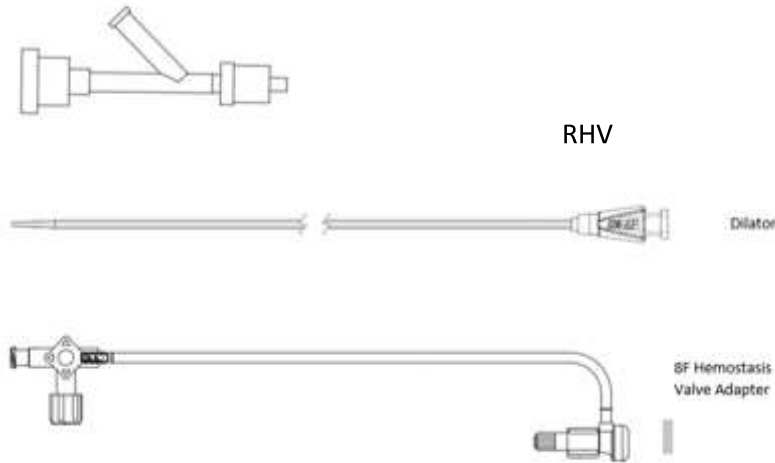
	A	B	C	D	E	F
PART NUMBER	USABLE LENGTH	PROXIMAL OD	DISTAL OD	PROXIMAL ID	DISTAL ID	Hydrophilic Coating
BALLAST80	80 cm	0.106"	0.100"	0.088"	0.088"	20cm
BALLAST90	90 cm					
BALLAST100	100 cm					
BALLAST105	105 cm					



Introducer Sheath



Ballast™ 088 Long Sheath Instructions for Use



INDICATIONS FOR USE

The Ballast 088 Long Sheath is indicated for the introduction of interventional devices into the peripheral, coronary, and neuro vasculature.

CONTRAINDICATIONS

There are no known contraindications.

COMPATIBILITY

The Ballast 088 Long Sheath can be used individually with a 0.038" guidewire or together with a 6F diagnostic catheter to access the desired anatomy. The Ballast 088 Long Sheath can be used for direct access to the vessel or through a short vessel access sheath. Refer to labeling provided with other medical technologies to determine compatibility.

pct. 9

WARNINGS

- The Ballast 088 Long Sheath should only be used by physicians who have received appropriate training in interventional techniques.
- Do not reuse. The device is intended for single use only. Discard the Sheath after one procedure. Structural integrity and/or function may be impaired through reuse or cleaning. Sheaths are extremely difficult to clean after exposure to biological materials and may cause adverse patient reactions if reused.
- This device is coated with a hydrophilic coating at the distal end. Please see table above for specific coating measurements. Please refer to the Instructions for Use section for further information on how to prepare and use this device to ensure it performs as intended. Failure to