

# HP P224 21.5-inch Monitor



Put more of your content front and center on the HP P224 21.5-inch Monitor. The stylishly modern and sleek profile design delivers essential presentation features and advanced connectivity at a remarkable price point.



## Crisp image clarity for all your content

- Easily navigate your documents and spreadsheets on the ample 21.5-inch diagonal Full HD screen with vibrant 1920 x 1080 resolution and 178° viewing angles.

## Stylishly redesigned

- Complement your modern workspace with a display that has a contemporary look and feel and a 3-sided micro-edge bezel for unlimited sightlines and virtually seamless multi-display<sup>1</sup> setups.

## Versatile connectivity

- Quickly connect to your devices and additional displays through the HDMI and DisplayPort™ connectors. Get legacy device compatibility from the VGA connector.

## Featuring

- Attach your HP Desktop Mini, HP Chromebox or select HP Thin Client directly behind the display. Keep things tidy with an integrated power supply.
- Filter blue light emission and shift colors to a warmer spectrum for more comfortable viewing with HP Low Blue Light mode. Adjust tilt for your best view.
- Free up valuable desk space with mounting options enabled by the 100-mm VESA pattern.
- Customize a total solution with options designed for your display, like the HP S100 Speaker Bar, which attaches easily to the lower bezel to add stereo audio without the desktop clutter.
- Energy efficiency and environmental sustainability are built into every ENERGY STAR® and TCO certified, EPEAT® Silver registered, and low halogen display.
- Manage your display and make it work for you. HP Display Assistant allows you to quickly resize screen partitions so you can work in separate regions of the screen and helps deter theft by dimming a display that's disconnected without approval.
- We're just a call or click away. Rest assured that your IT investment is supported with our three-year standard limited warranty. To extend your protection, select an optional HP Care service.



## HP P224 21.5-inch Monitor Specifications Table



<b>Product Number</b>	5QG34AA, 5QG34A8, 5QG34U9
<b>Display Size (diagonal)</b>	21.5"
<b>Display Type</b>	LED backlight
<b>Panel Active Area</b>	18.74 x 10.54 in; 47.6 x 26.77 cm
<b>Viewing Angle</b>	178° horizontal; 178° vertical
<b>Brightness</b>	250 cd/m <sup>2</sup> <sup>1</sup>
<b>Contrast Ratio</b>	10000000:1 dynamic; 3000:1 static <sup>1</sup>
<b>Response Time</b>	5 ms gray to gray <sup>1</sup>
<b>Aspect Ratio</b>	16:9 <sup>1</sup>
<b>Native Resolution</b>	FHD (1920 x 1080 @ 60 Hz) (DisplayPort 1.2 or HDMI 2.0 required to drive panel at its native resolution.)
<b>Resolutions Supported</b>	1024 x 768; 1280 x 1024; 1280 x 720; 1280 x 800; 1440 x 900; 1600 x 900; 1680 x 1050; 1920 x 1080; 640 x 480; 720 x 400; 800 x 600
<b>Display Features</b>	Anti-glare; LED backlights; User controls
<b>User Controls</b>	Brightness; Color control; Contrast; Exit; Image control; Information; Management; Menu; Power; Input control
<b>Input Signal</b>	1 DisplayPort™ 1.2 (in with HDCP support); 1 HDMI 1.4 (with HDCP support);
<b>Input Power</b>	Input voltage 100 to 240 VAC
<b>Power Consumption</b>	22 W (maximum), 17 W (typical), 0.3 W (standby)
<b>Dimensions with Stand (W x D x H)</b>	19.23 x 7.1 x 14.6 in 48.85 x 18.1 x 37.1 cm
<b>Dimensions without Stand (W x D x H)</b>	19.23 x 1.57 x 11.54 in 48.85 x 4.01 x 29.32 cm
<b>Weight</b>	6.6 lb 3 kg With stand.
<b>Ergonomic Features</b>	Tilt: -5 to +25°
<b>Environmental</b>	Arsenic-free display glass; Low halogen; Mercury-free display backlights; TCO Certified; TCO Certified Edge <sup>2</sup>
<b>What's in the box</b>	HP P224 21.5-inch Monitor, AC power cord; DisplayPort™ cable; HDMI cable; VGA cable
<b>Warranty</b>	Protected by HP, including a 3 year standard limited warranty. Optional HP Care Pack Services are extended service contracts that extend your protection beyond the standard warranties. Service levels and response times for HP Care Packs may vary depending on your geographic location. Service starts on date of hardware purchase. Restrictions and limitations apply. For details, visit <a href="http://www.hp.com/go/cpc">www.hp.com/go/cpc</a> . HP services are governed by the applicable HP terms and conditions of service provided or indicated to Customer at the time of purchase. Customer may have additional statutory rights according to applicable local laws, and such rights are not in any way affected by the HP terms and conditions of service or the HP Limited Warranty provided with your HP Product.

See important legal disclaimers on the last page

## HP Recommended Accessories and services

### HP USB-C Dock G4



Transform your HP notebook or tablet into a complete desktop experience with the HP USB-C Universal Dock, which delivers USB-C™ charging and connections for your network, dual 4K displays, and accessories with one cable connection.  
**Product number: 3FF69AA**

### HP Recycled Series 15.6-inch Top Load



**Product number: 5KN29AA**

### HP Quick Release 2



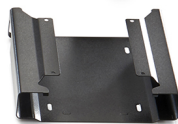
HP Quick Release is an easy to use, 100 mm VESA-compliant, LCD monitor mounting solution that allows you to quickly and securely attach a flat panel monitor to a variety of stands, brackets, arms or wall mounts. HP Quick Release can also be used for mounting any combination of devices that are compatible with the 100 mm VESA Flat Display Mounting Interface Standard. The failsafe “Sure-Lock” mechanism snaps the monitor (or mounted device) securely in place, and can be further secured with a theft-deterrent security screw.  
**Product number: 6KD15AA**

### HP S101 Speaker Bar



Speakers to enhance your personal listening experience.  
**Product number: 5UU40AA**

### HP Desktop Mini Security/Dual VESA Sleeve v2



Wrap your HP Desktop Mini PC in the HP Desktop Mini Security/Dual VESA Sleeve v2 to securely mount it—with or without an Expansion Module—behind your display, position the solution on a wall, and lock it down with the integrated security bracket and optional HP Ultra-Slim Cable Lock.  
**Product number: 2JA32AA**

### HP Business PC Security Lock v3 Kit



Help prevent chassis tampering and secure your PC and display in workspaces and public areas with the affordable HP Business PC Security Lock v3 Kit.  
**Product number: 3XJ17AA**

### HP Hot Desk Stand



Redefine workspace design with the HP Hot Desk Stand, a ready-to-go touchdown station that supports a monitor and plug-and-play dock, enhances productivity, and provides a clean and comfortable workspace for your mobile and flexible workforce at an affordable price.  
**Product number: W3Z73AA**

Complete dual display productivity solution with 2nd Arm. Supports up to 27" diagonal, height and viewing angle adjustments.  
**Product number: W3Z74AA**

### HP USB Graphics Adapter



The super-compact HP USB Graphics Adapter enables connection of up to six simultaneous displays to help you boost productivity and multi-task across several open applications.  
**Product number: NL571AA**

### HP UC Wired Headset



Enable crystal-clear sound and noise cancelling for meeting on-the-fly through your Windows notebook or tablet with the durable and lightweight HP UC Wired Headset, designed for a comfortable work day.  
**Product number: K7V17AA**

### HP 4 year Next Business Day Exchange Hardware Support for Monitors (up to 22 inch)



When you can't afford to wait for your device to be exchanged, let HP Hardware Next Business Day Advance Exchange get you back up and running as quickly as possible. You'll get remote technical assistance to help you resolve problems. Then, if needed, we'll ship you a replacement unit within the next business day – along with a prepaid waybill to ship back your defective unit.  
**Product number: U0J10E (for 4 year platforms), U0J11E (for 5 year platforms)**

## Messaging Footnotes

<sup>1</sup> Each display sold separately.

<sup>2</sup> HP Desktop Mini, HP Chromebox, and HP Thin Client sold separately. Requires HP B300 PC Mounting Bracket for Monitors, sold separately.

<sup>3</sup> Mounting hardware sold separately.

<sup>4</sup> Each accessory sold separately. Mounting hardware sold separately.

<sup>5</sup> EPEAT® registered where applicable. EPEAT registration varies by country. See [www.epeat.net](http://www.epeat.net) for registration status in your country. Search keyword generator on HP's 3rd party option store for solar generator accessories at [www.hp.com/go/options](http://www.hp.com/go/options).

<sup>6</sup> External power supplies, power cords, cables and peripherals are not Low Halogen. Service parts obtained after purchase may not be Low Halogen.

<sup>7</sup> HP Care Packs sold separately. Service levels and response times for HP Care Packs may vary depending on your geographic location. Service starts on date of hardware purchase. Restrictions and limitations apply. For details, visit [www.hp.com/go/cpc](http://www.hp.com/go/cpc). HP Services are governed by the applicable HP terms and conditions of service provided or indicated to Customer at the time of purchase. Customer may have additional statutory rights according to applicable local laws, and such rights are not in any way affected by the HP terms and conditions of service or the HP Limited Warranty provided with your HP Product.

## Technical Specifications Footnotes

<sup>1</sup> All specifications represent the typical specifications provided by HP's component manufacturers, actual performance may vary either higher or lower.

<sup>2</sup> External power supplies, power cords, cables and peripherals are not Low Halogen. Service parts obtained after purchase may not be Low Halogen.

<sup>3</sup> Lock is sold separately.

**Sign up for updates**  
[hp.com/go/getupdated](http://hp.com/go/getupdated)

**Learn more at**  
[hp.com](http://hp.com)

---

© Copyright 2019 HP Development Company, L.P. The information contained herein is subject to change without notice. The only warranties for HP products and services are set forth in the express warranty statements accompanying such products and services. Nothing herein should be construed as constituting an additional warranty. HP shall not be liable for technical or editorial errors or omissions contained herein. EPEAT® registered where applicable. EPEAT registration varies by country. See [www.epeat.net](http://www.epeat.net) for registration status by country. See HP's 3rd party option store for solar energy accessory at [www.hp.com/go/options](http://www.hp.com/go/options)

DisplayPort™ and the DisplayPort™ logo are trademarks owned by the Video Electronics Standards Association (VESA®) in the United States and other countries. ENERGY STAR is a registered trademark owned by the U.S. Environmental Protection Agency.  
4AA7-4788ENUC, March 2019

