

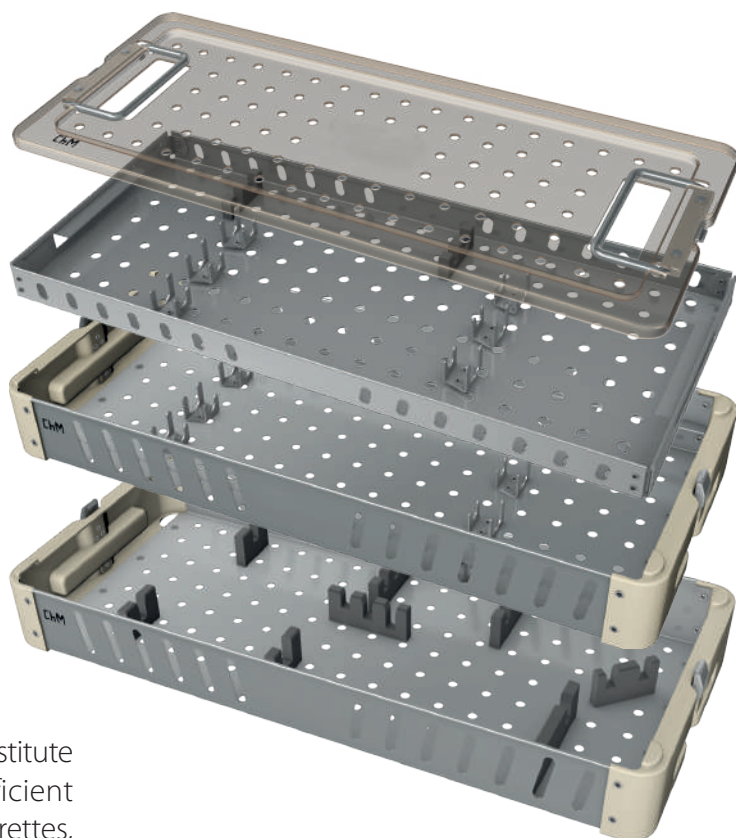


Instrument set for posterior lumbar spine preparation 15.0903.001

A set of specialized instruments that significantly facilitate the procedure of lumbar spine preparation from the posterior approach

- 9 types of bone rongeurs
- 10 types of bone curettes
- 2 files
- 2 nerve elevators
- Vertebra elevator
- Nerve hook
- Sympert bone rongeur and osteotome
- Modern containers





The instruments for lumbar spine preparation constitute a complete set of basic devices enabling efficient and safe laminectomy and disctectomy. Bone curettes, rongeurs and files are available in a curved and straight version allowing effective access to prepared tissues. The optimal length of the instruments ensures proper visibility during the procedure, and the silicone handles provide an ergonomic grip.

Document No	ST-515A
Date of issue	20.08.2018
Review date	P-000-04.10.2018

The manufacturer reserves the right to introduce design changes.

Instrument set for posterior lumbar spine preparation

15.0903.001

Instrument set 1/3

15.0903.101



Container lid 9x4

14.0903.103

1

Container 9x4H

14.0903.101

1



Osteotome

Facilitates facetectomy, helps to remove osteophytes and bone structures. Blade width 8 mm.

40.6191.000

1



Bone curette oval right

The curved version right. One-sided cutting edge. Used for preparation of endplates of vertebral bodies and removal of intervertebral discs. Blade width 8 mm.

40.5838.000

1



Bone curette oval left

The curved version left. One-sided cutting edge. Used for preparation of endplates of vertebral bodies and removal of intervertebral discs. Blade width 8 mm.

40.5839.000

1



Bone curette rectangular right

The curved version right. One-sided cutting edge. Used for removal of intervertebral discs and cartilage. Blade width 8 mm.

40.6194.000

1



Bone curette rectangular left

The curved version left. One-sided cutting edge. Used for removal of intervertebral discs and cartilage. Blade width 8 mm.

40.6195.000

1



Bone curette left

The curved version, left. Facilitates discectomy. Blade width 5.5 mm.

40.6201.000

1



Bone curette right

The curved version, right. Facilitates discectomy. Blade width 5.5 mm.

40.6200.000

1



Elevator

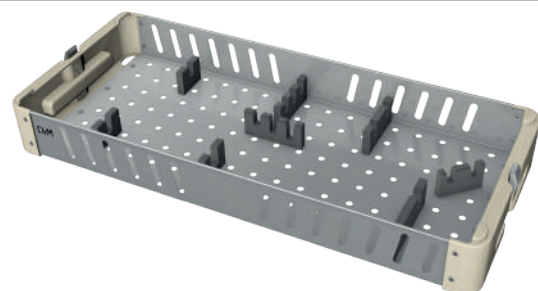
Used to prepare the endplates of the vertebral body.

40.5837.000

1

Instrument set 2/3




15.0903.102

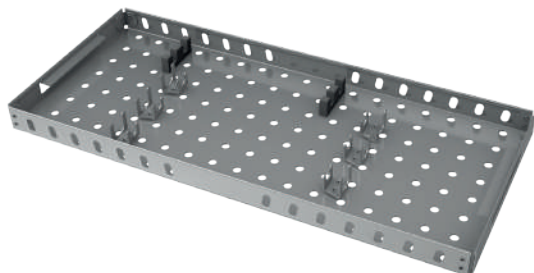


Container 9x4H

14.0903.102

1

	CUSHING bone rongeur straight 230mm, 2x10mm The straight blade version, blade width 2mm. Used for the comprehensive removal of intervertebral disc material and other soft tissues.	40.7027.042	1
	SPURLING bone rongeur straight 230mm 4x10mm The straight blade version, blade width 4mm. Used for the comprehensive removal of intervertebral disc material and other soft tissues.	40.7033.044	1
	FERRIS-SMITH neurosurgical bone rongeur 6x10mm 23cm straight The straight blade version, blade width 6mm. Used for the comprehensive removal of intervertebral disc material and other soft tissues.	40.7150.046	1
	CUSHING bone rongeur upwards 230mm, 2x10mm The curved-up blade version, angle of deflection 30°, blade width 2mm. Used for the comprehensive removal of intervertebral disc material and other soft tissues. The deflection of the blade improves the access to the material placed laterally to the instrument being introduced.	40.7028.042	1
	SPURLING bone rongeur upwards 230mm, 4x10mm The curved-up blade version, angle of deflection 30°, width of the blade 4mm. Used for the comprehensive removal of intervertebral disc material and other soft tissues. The deflection of the blade improves the access to the material placed laterally to the instrument being introduced.	40.7034.044	1
	FERRIS-SMITH neurosurgical bone rongeur 6x10mm 23cm curved up The curved-up blade version, angle of deflection 30°, blade width 6mm. Used for the comprehensive removal of intervertebral disc material and other soft tissues. The deflection of the blade improves the access to the material placed laterally to the instrument being introduced.	40.7151.046	1
	KERRISON bone rongeur, upwards, 130°, 23cm, 2mm Used for the precise removal of small fragments of the vertebral arches and other compact tissues. Blade angle 130° (40°), blade width 2mm.	40.7086.002	1
	KERRISON bone rongeur, upwards, 130°, 23cm, 4mm Used for the precise removal of small fragments of the vertebral arches and other compact tissues. Blade angle 130° (40°), blade width 4mm.	40.7086.004	1
	KERRISON bone rongeur, upwards, 130°, 23cm, 6mm Used for the precise removal of small fragments of the vertebral arches and other compact tissues. Blade angle 130° (40°), blade width 6mm.	40.7086.006	1
	Sybert Bone rongeur 8/360mm Used for the removal of bone fragments or other compact tissues. Blade width 8mm.	40.3339.008	1



Tray 9x4 1/2H

14.0903.201

1



File

The straight version. One-sided cutting blades. Used to remove residual cartilage from the endplates of the vertebrae to expose the bleeding bone.

40.6196.000

1



Curved file

The curved version. One-sided cutting blades. Used to remove residual cartilage from the endplates of the vertebrae to expose the bleeding bone.

40.6197.000

1



Bone curette

The straight version. Facilitates discectomy. Blade width 5.5mm.

40.6198.000

1



Bone curette curved

The curved-back version. Facilitates discectomy. The deflection facilitates access to the entire surface of the intervertebral disc. Blade width 5.5mm.

40.6199.000

1



Bone curette oval

The straight version. One-sided cutting edge. Used for preparation of endplates of vertebral bodies and removal of intervertebral disc material. Blade width 8 mm.

40.6192.000

1



Bone curette rectangular

The straight version. One-sided cutting edge. Used for removal of intervertebral disc material and cartilage. Blade width 8 mm.

40.6193.000

1



Elevator 6

Is intended for pulling back and securing the dura mater of the spinal cord or nerve roots.

40.4467.006

1



Elevator 10

Is intended for pulling back and securing the dura mater of the spinal cord or nerve roots.

40.4467.010

1



CUSHING retractor 4mm 28cm

Is intended for nerve retraction.

30.1010.000

1

ChM sp. z o.o.

Lewickie 3b

16-061 Juchnowiec Kościelny

Poland

tel. +48 85 86 86 130

fax +48 85 86 86 109

chm@chm.eu

www.chm.eu

