



## From China to the world

SHINVA was established in 1943 with history over 70 years. As the chairman unit of China Association for Medical Devices Industry (CAMDI), SHINVA group is leading in the field of medical instruments and equipment, pharmaceutical equipment and medical medicine service.

Infection Control Division, which focuses on washing, disinfection and sterilization, is one of the biggest divisions in SHINVA group. Since the first generation sterilizer invented, SHINVA has led infection control field more than 40 years in China. As China's national disinfection sterilization equipment research center, SHINVA is the unique company in China which can supply turn-key CSSD project and integrated solutions including design, engineering, decoration, equipment, consumables, tracking and management software and service, etc. Until now, SHINVA has completed more than 5000 CSSD projects in the whole country taking 50% market shares.

For international market, SHINVA's products have been launched over 100 countries or regions in the world. Now SHINVA is firmly walking on the way from China to the world.



SHINVA complies with ISO9001, ISO13485 and ISO14001, CE, PED and ASME quality management systems.

## 7 integrated solutions in Infection Control Division



## 15 series products

1 High temperature sterilization equipment	2 Low temperature sterilization equipment	3 Washing and disinfection equipment
4 Endoscope washing and disinfection equipment	5 Baby bath products	6 Inpatient area washing and disinfection equipment
7 Medical drying equipment	8 CSSD furniture and logistics products	9 CSSD tracking manage software
10 Engineering project	11 Chemical monitoring products	12 Washing and lubricating products
13 Packing material products	14 Disposable sterile operation kits	15 Disinfectant products

## Content >>>>

### ► CSSD (Central Sterile Supply Department)

P<sub>4</sub>



### ► Low Temperature Sterilizer

P<sub>26</sub>



### ► Steam Sterilizer

P<sub>6</sub>



### ► Washer-disinfector

P<sub>36</sub>



### ► Small Steam Sterilizer

P<sub>18</sub>



### ► Medical Drying Cabinet

P<sub>54</sub>





# CSSD(Central Sterile Supply Department)

SHINVA is the largest manufacturer of infection control products in China. We supplied the integrated solutions for hospital CSSD from 2000. According to the sickbed numbers, surgery operations, outpatient amount, site, budget and development planning in hospitals, we offer the integrated suitable design including the process layout, equipment configuration, heating ventilating and air conditioning, decoration and purification, tracking and quality manager system, etc. so as to meet the requirements for washing, disinfection, checking, packing, sterilization, storage and dispatch in hospital and society CSSD.

- 01

Design

Optimal process plan
- 02

Equipment

Reasonable equipment configuration
- 03

Construction

Best construction scheme
- 04

Installation and commissioning

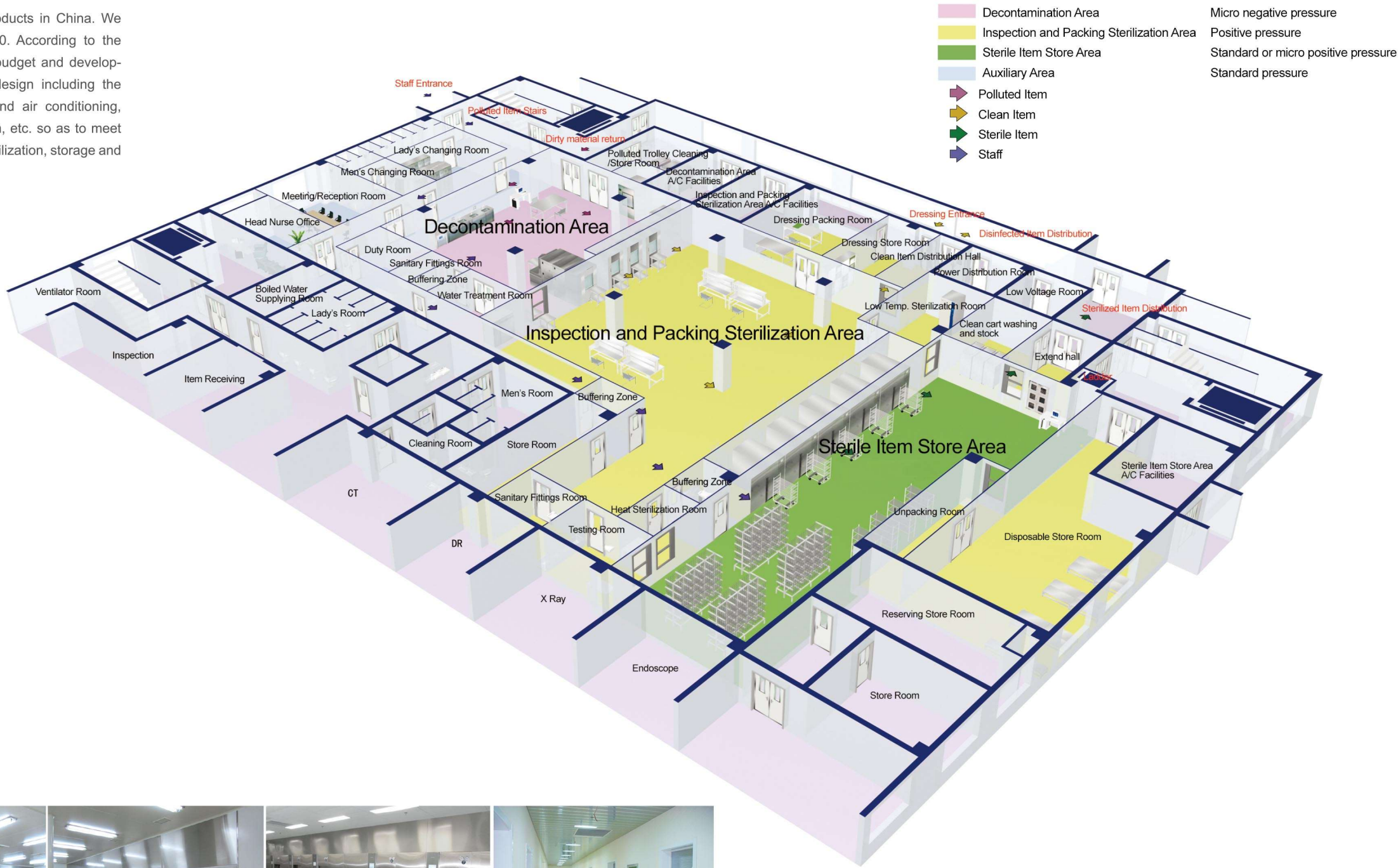
Safety and advisable scheme
- 05

Training

Systematic theory and actual operation
- 06

Maintenance

Free technology consulting, fast feedback and action





# MAST-A Steam Sterilizer

## Product introduction

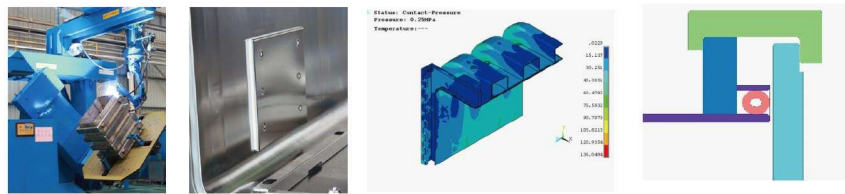
MAST-A is a fast, compact and versatile sterilizer which is researched and developed according to the latest requirements of medical institution and CSSD. It is designed and manufactured combines high capacity with cost-efficiency, while offering high operating reliability and easy maintenance.

The design of chamber accords with state GB1502011, GB8599-2008, CE and European EN285 standard.

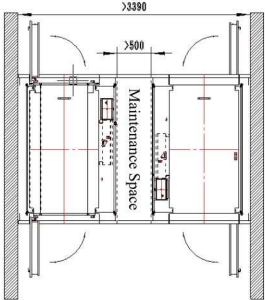


## Product features

- Superb chamber machining and welding process**  
The acid-proof stainless steel chamber and jacket are automatically robot-welded to guarantee long time and trouble-free operation.
- Nice chamber surface**  
Surface Smoothness, Ra≤0.5; No welding part or bolt in the chamber which effectively protects the items to be sterilized. Steam baffle plates are surrounded by silicon rubber protecting the chamber surface.
- Reliable and durable chamber**  
Chamber is designed according to professional analytical method. High-emulation software ANSYS is used for chamber simulation. Design service life: 10 years (or 20000 times sterilization)
- Reasonable sealing structure**  
Compact designed sealing groove, durable circular hollow silicon gasket, sealed by compressed air.
- Hanged door automatically**  
The door is driven by a motor automatically, stable and easy operation. Door concave-convex tooth structure ensures its safety and durability.



- Precise pressure detecting and control**  
Intelligent pressure transmitters, Wika (Germany), ensure steam pressure detecting and control both in Chamber and jacket.
- Unique vacuum noise-reduction system**  
LNS low-noise and water-saving vacuum system, effective reduced the noise during running.
- Humanized operation system**  
Colorful touch screen on loading-side, 6 indicating lamps on unloading sides, which are concise, vivid and exactly showing sterilization running status and alarming information.
- Reasonable pipeline layout**  
All the pipes, valves and components are designed and installed in single side, which is more convenience for repair and maintenance. The sterilizers can be installed against the wall and also, two sterilizers can use the same maintenance space to save installation space.



## Scientific design parameters, wide scope of application

Item	Chamber	Jacket
Design pressure MPa	-0.1/0.3	0.3
Design temperature °C	144	144
Working pressure MPa	0.25	0.25
Max. Working temperature °C	139	139
Safety valve open pressure	0.28	0.28





Loading-side Panel



8" Colorful display touch screen  
Powerful PLC as cetral processor

Display information on main menu:

- P-Chamber
- T-Chamber
- P-Jacket
- Door operation
- Alarm recording
- Log out
- Quick start
- Run program
- Auxiliary function
- Program setting
- System setting
- Date

32 built-in programs

- 1 Warm Up
- 2 B&D Test
- 3 Fabric
- 4 Instrument
- 5 Thermolabile
- 6 Flash
- 7 Orthopedics
- 8 Leak Test
- 9 Prion
- 10 Optical
- 11 Heavy Load
- 12 Small Load
- 13 Open Liquid
- 14 Gravity
- 15 Positive
- 16 Dry
- 17 PCD Test
- 18 A/D Test
- 19-32 User Defined

Unloading-side Panel



Humanistic indicating system

- Back door closing indicating lamp
- Back door closed lamp
- Cycle running lamp
- Cycle end indicating lamp
- Breakdown indicating lamp
- Power lamp

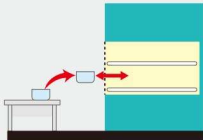
Sterilization consumables



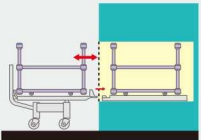
Technical parameters

Model	Volume (L)	Order code	Net weight (kg)	Input power (kVA)	Power supply (W×H×Dmm)	Chamber dimension (W×H×Dmm)	Overall dimension (W×H×Dmm)	Remark
MAST-A-140	146	MAST-A-140D-A-N	425	2.5	AC 380V,50Hz	420×420×830	1290×1680×1050	single door/external steam supply/shelf load
		MAST-A-140DD-A-N	525	18	AC 380V,50Hz	420×420×830	1290×1680×1050	single door/built-in electric steam generator/shelf load
		MAST-A-140S-A-N	510	2.5	AC 380V,50Hz	420×420×830	1290×1680×1100	double door/external steam supply/shelf load
		MAST-A-140SD-A-N	610	18	AC 380V,50Hz	420×420×830	1290×1680×1100	double door/built-in electric steam generator/shelf load
MAST-A-240	241	MAST-A-240D-A-N	580	2.5	AC 380V,50Hz	600×600×670	1370×1880×950	single door/external steam supply/shelf load
		MAST-A-240DD-A-N	660	24	AC 380V,50Hz	600×600×670	1370×1880×950	single door/built-in electric steam generator/shelf load
		MAST-A-240S-A-N	660	2.5	AC 380V,50Hz	600×600×670	1370×1880×1000	double door/external steam supply/shelf load
		MAST-A-240SD-A-N	720	24	AC 380V,50Hz	600×600×670	1370×1880×1000	double door/built-in electric steam generator/shelf load
		MAST-A-240D-B-N	600	2.5	AC 380V,50Hz	600×600×670	1370×1880×950	single door/external steam supply/cart and trolley load
		MAST-A-240DD-B-N	680	24	AC 380V,50Hz	600×600×670	1370×1880×950	single door/built-in electric steam generator/trolley load
		MAST-A-240S-B-N	680	2.5	AC 380V,50Hz	600×600×670	1370×1880×1000	double door/external steam supply/trolley load
		MAST-A-240SD-B-N	740	24	AC 380V,50Hz	600×600×670	1370×1880×1000	double door/built-in electric steam generator/trolley load
MAST-A-350	352	MAST-A-350D-A-N	780	2.5	AC 380V,50Hz	600×600×980	1215×1880×1150	single door/external steam supply/shelf load
		MAST-A-350DD-A-N	880	24	AC 380V,50Hz	600×600×980	1215×1880×1150	single door/built-in electric steam generator/shelf load
		MAST-A-350S-A-N	860	2.5	AC 380V,50Hz	600×600×980	1215×1880×1200	double door/external steam supply/shelf load
		MAST-A-350SD-A-N	960	24	AC 380V,50Hz	600×600×980	1215×1880×1200	double door/built-in electric steam generator/shelf load
		MAST-A-350D-B-N	880	2.5	AC 380V,50Hz	600×600×980	1215×1880×1150	single door/external steam supply/cart and trolley load
		MAST-A-350DD-B-N	1000	24	AC 380V,50Hz	600×600×980	1215×1880×1150	single door/built-in electric steam generator/trolley load
		MAST-A-350S-B-N	960	2.5	AC 380V,50Hz	600×600×980	1215×1880×1200	double door/external steam supply/trolley load
		MAST-A-350SD-B-N	1080	24	AC 380V,50Hz	600×600×980	1215×1880×1200	double door/built-in electric steam generator/trolley load
MAST-A-650	655	MAST-A-650D-B-N	1170	4	AC 380V,50Hz	610×910×1180	1310×2070×1370	single door/external steam supply/cart and trolley load
		MAST-A-650DD-B-N	1270	46	AC 380V,50Hz	610×910×1180	1310×2070×1370	single door/built-in electric steam generator/trolley load
		MAST-A-650S-B-N	1270	4	AC 380V,50Hz	610×910×1180	1310×2070×1420	double door/external steam supply/trolley load
		MAST-A-650SD-B-N	1370	46	AC 380V,50Hz	610×910×1180	1310×2070×1420	double door/built-in electric steam generator/trolley load
MAST-A-810	810	MAST-A-810D-B-N	1260	4	AC 380V,50Hz	610×910×1460	1310×2070×1650	single door/external steam supply/cart and trolley load
		MAST-A-810DD-B-N	1360	61	AC 380V,50Hz	610×910×1460	1310×2070×1650	single door/built-in electric steam generator/trolley load
		MAST-A-810S-B-N	1360	4	AC 380V,50Hz	610×910×1460	1310×2070×1700	double door/external steam supply/trolley load
MAST-A-990	999	MAST-A-990D-B-N	1460	61	AC 380V,50Hz	610×910×1460	1310×2070×1700	double door/built-in electric steam generator/trolley load
		MAST-A-990DD-B-N	1300	4	AC 380V,50Hz	610×910×1800	1310×2070×1990	single door/external steam supply/cart and trolley load
		MAST-A-990S-B-N	1400	61	AC 380V,50Hz	610×910×1800	1310×2070×1990	single door/built-in electric steam generator/trolley load
		MAST-A-990SD-B-N	1400	4	AC 380V,50Hz	610×910×1800	1310×2070×2040	double door/external steam supply/trolley load
MAST-A-1200	1203	MAST-A-1200D-B-N	1500	61	AC 380V,50Hz	610×910×1800	1310×2070×2040	double door/built-in electric steam generator/trolley load
		MAST-A-1200DD-B-N	1950	5	AC 380V,50Hz	680×1180×1500	1450×1990×1710	single door/external steam supply/cart and trolley load
		MAST-A-1200S-B-N	2100	90	AC 380V,50Hz	680×1180×1500	1450×2400×1710	single door/built-in electric steam generator/trolley load
		MAST-A-1200SD-B-N	2050	5	AC 380V,50Hz	680×1180×1500	1450×1990×1760	double door/external steam supply/trolley load
		MAST-A-1200SD-B-N	2200	90	AC 380V,50Hz	680×1180×1500	1450×2400×1760	double door/built-in electric steam generator/trolley load
MAST-A-1500	1500	MAST-A-1500D-B-N	2100	5	AC 380V,50Hz	680×1180×1870	1450×1990×2080	single door/external steam supply/cart and trolley load
		MAST-A-1500DD-B-N	2250	100	AC 380V,50Hz	680×1180×1870	1450×2400×2080	single door/built-in electric steam generator/trolley load
		MAST-A-1500S-B-N	2200	5	AC 380V,50Hz	680×1180×1870	1450×1990×2130	double door/external steam supply/trolley load
		MAST-A-1500SD-B-N	2350	100	AC 380V,50Hz	680×1180×1870	1450×2400×2130	double door/built-in electric steam generator/trolley load

MAST-A	Model instruction
350	Chamber volume (L)
S	Door: S- double door D- single door
D	Steam supply: no marks- outer steam supply D- build-in steam generator
A	Installation: A- Shelf loading B- Loading by cart and trolley
N	Exportation Configuration



A series Shelf loading



B series Loading by carts and transfer trolley



# MAST-V Steam Sterilizer

## Product introduction

MAST-V is a fast, compact and versatile sterilizer which is researched and developed according to the latest requirements of medical institution and CSSD. It is designed and manufactured combines high capacity with cost-efficiency, while offering high operating reliability and easy maintenance.

The design of chamber accords with state GB1502011, GB8599-2008, CE and European EN285 standard.



## Product features

### Superb chamber machining and welding process

The acid-proof stainless steel chamber and jacket are automatically robot-welded to guarantee long time and trouble-free operation.

### Nice chamber surface

Surface Smoothness, Ra≤0.5; No welding part or bolt in the chamber which effectively protects the items to be sterilized. Steam baffle plates are surrounded by silicon rubber protecting the chamber surface.

### Reliable and durable chamber

Chamber is designed according to professional analytical method. High-emulation software ANSYS is used for chamber simulation. Design service life: 10 years (or 20000 times sterilization)

### Reasonable sealing structure

Compact designed sealing groove, durable circular hollow silicon gasket, sealed by compressed air.

### Vertical sliding door

The door is up and down vertical sliding by air cylinder. It is faster and saves space, while offering proven, handles-free convenience.

### Precise pressure detecting and control

Intelligent pressure transmitters, Wika (Germany), ensure steam pressure detecting and control both in Chamber and jacket.

### Unique vacuum noise-reduction system

LNS low-noise and water-saving vacuum system, effective reduced the noise during running.

### Humanized operation system

Colorful touch screen on loading-side, 6 indicating lamps on unloading sides, which are concise, vivid and exactly showing sterilization running status and alarming information.

### Reasonable pipeline layout

All the pipes, valves and components are designed and installed in single side, which is more convenience for repair and maintenance. The sterilizers can be installed against the wall and also, two sterilizers can use the same maintenance space to save installation space.

## Technical parameters

Model	Order code	Volume	Chamber dimension (W×H×Dmm)	Overall dimension (W×H×Dmm)	Weight (kg)	Input power (kVA)	Power supply (V/Hz)	Remark
MAST-V-280	MAST-V-280D-B-N	280	535×535×1000	1200×1800×1340	920	2.5	AC 380V, 50Hz	Single door/external steam supply/cart and trolley load
	MAST-V-280S-B-N				950	2.5		Double door/external steam supply/cart and trolley load
	MAST-V-280DD-B-N				970	29		Single door/built-in steam generator/cart and trolley load
	MAST-V-280SD-B-N				1000	29		Double door/built-in steam generator/cart and trolley load
MAST-V-450	MAST-V-450D-B-N	450	675×675×1000	1307×1900×1340	1315	4	AC 380V, 50Hz	Single door/external steam supply/cart and trolley load
	MAST-V-450S-B-N				1350	4		Double door/external steam supply/cart and trolley load
	MAST-V-450DD-B-N				1365	46		Single door/built-in steam generator/cart and trolley load
	MAST-V-450SD-B-N				1400	46		Double door/built-in steam generator/cart and trolley load
MAST-V-610	MAST-V-610D-B-N	610	675×675×1350	1307×1900×1690	1515	4	AC 380V, 50Hz	Single door/external steam supply/cart and trolley load
	MAST-V-610S-B-N				1550	4		Double door/external steam supply/cart and trolley load
	MAST-V-610DD-B-N				1565	46		Single door/built-in steam generator/cart and trolley load
	MAST-V-610SD-B-N				1600	46		Double door/built-in steam generator/cart and trolley load
MAST-V-800	MAST-V-800D-B-N	800	675×675×1750	1307×1900×2090	1815	4	AC 380V, 50Hz	Single door/external steam supply/cart and trolley load
	MAST-V-800S-B-N				1850	4		Double door/external steam supply/cart and trolley load
	MAST-V-800DD-B-N				1865	68		Single door/built-in steam generator/cart and trolley load
	MAST-V-800SD-B-N				1900	68		Double door/built-in steam generator/cart and trolley load



# MAST-H Steam Sterilizer

## Product introduction

MAST-H is one of the new breed of state of the art steam sterilizer with large size capacity while offering automatic horizontal sliding door, intelligent control, reliable operation and easy maintenance, which is suitable for the high level customer with large scales. It is developed according to the latest requirements of medical institution and CSSD. MAST-H sterilizer can be widely used in biological engineering, health care, animal laboratory, pharmaceutical industry for the sterilization of biological products, containers, sterile clothing, medical equipment, medical dressings and other items.

The design of chamber accords with state GB1502011, GB8599-2008, FDA and European EN285 ,EC\97\23 standard.



## Product features

- Automatic horizontal sliding door**  
The doors are automatic horizontal sliding, driven by electric motor and belt, which realizes intelligent control, reliable operation and easy maintenance. The door operation is carried out on touch screen ensures operators no need to touch the door any more.
- Superb chamber machining and welding process**  
The acid-proof stainless steel chamber and jacket are automatically robot-welded to guarantee long time and trouble-free operation.
- Nice chamber design**  
Surface Smoothness, Ra≤0.5; No welding part or bolt in the chamber which effectively protects the items to be sterilized. Steam baffle plates are surrounded by silicon rubber protecting the chamber surface. Concave structure in middle chamber ensures the condensate water thoroughly drained and dried.



- Reliable and durable chamber**  
Chamber is designed according to professional analytical method. High-emulation software ANSYS is used for chamber simulation. Design service life: 15 years (Or 30000 cycles sterilization).
- Reasonable sealing structure**  
Compact designed sealing groove, durable circular hollow silicon gasket, sealed by compressed air.  
Precise pressure detecting and control  
Intelligent pressure transmitters, Wika (Germany), ensure steam pressure detecting and control both in Chamber and jacket.
- Unique vacuum noise-reduction system**  
LNS low-noise and water-saving vacuum system, effective reduced the noise during running.
- Humanized operation system**  
Colorful touch screen on loading-side, 6 indicating lamps on unloading sides, which are concise, vivid and exactly showing sterilization running status and alarming information.
- Reasonable maintenance space**  
MAST-H steam sterilizer is design with maintenance space, the access to the maintenance is available from the front side, no need the extra space. All the pipes, valves and components are designed and installed in single side, which is more convenience for repair and maintenance.

Model	Order code	Chamber dimension (WxHxDmm)	Overall dimension (WxHxDmm)	Power supply	Input power (kVA )	Net weight (Kg)	Remark
MAST-H	MAST-H-800S-B-N	660×1080×1274	1900×1900×1775	AC 380V 50Hz	4	1700	Double door/external steam supply/Cart and trolley load
	MAST-H-800SD-B-N		1900×2215×1775		68	1950	Double door/Built-in steam supply/Cart and trolley load
	MAST-H-1000S-B-N	660×1080×1500	1900×1900×2000		4	1800	Double door/external steam supply/Cart and trolley load
	MAST-H-1000SD-B-N		1900×2215×1775		68	2050	Double door/Built-in steam supply/Cart and trolley load
	MAST-H-1200S-B-N	680×1180×1500	1900×1900×2000		5	2000	Double door/external steam supply/Cart and trolley load
	MAST-H-1200SD-B-N		1900×2215×2000		90	2250	Double door/Built-in steam supply/Cart and trolley load
	MAST-H-1500S-B-N	680×1180×1870	1900×1900×2380		5	2150	Double door/external steam supply/Cart and trolley load
	MAST-H-1500SD-B-N		1900×2215×2380		100	2400	Double door/Built-in steam supply/Cart and trolley load
	MAST-H-2000S-B-N		1900×1900×3070		5	2400	Double door/external steam supply/Cart and trolley load



# MAST-C Steam Sterilizer

## Product introduction

MAST-C series is one of the economic sterilizers which are suitable for smaller hospital and medical centers. It is researched according to the latest requirements of medical institution and CSSD.

## Product features

- Low working noise, high vacuum limit.
- Equipped with water saving without pressure cooling system. The draining water temperature blow 65℃ during normal working process.
- Equipped with professional and systematized sterilizing programs of fabric, instrument, rubber, liquid, cavity, testing and auxiliary programs of BD, PCD and leakage.
- Temperature, pressure, time, running status, failure warning liquid-crystal display.
- Intelligentized drying system to guarantee the residual humidity of instrument and dressing no more than 0.2% and 1% respectively.
- Build-in efficient steam generator, microcomputer temperature control, time and energy saving.
- Equipped with printer to print date, time and process parameters
- Over-heat auto protection device, dual door safety lock device, overpressure relief valve, short-circuit protection, and overpressure protection.
- Perfect four-level authority management system to avoid mis-operation.



## Technical parameter

Design pressure: -0.1/0.25MPa      Temperature display accuracy: 0.1℃  
Vacuum lower limit:-0.08MPa      Pressure display accuracy: 1 KPa  
Sterilization working pressure:115℃ -139℃      Chamber material: 304 Stainless steel

Model	Order Code	Volume	Chamber dimension(φ×L)	Overall dimension	Net weight	Power supply	Input power
MAST-C	MAST-C-100	100L	400×850mm	1250×730×1660mm	260kg	AC 380V, 50Hz	11 kVA
MAST-C	MAST-C-135	135L	500×710mm	1110×750×1712mm	360kg	AC 380V, 50Hz	13 kVA
MAST-C	MAST-C-185	185L	500×950mm	1350×750×1712mm	470kg	AC 380V, 50Hz	13 kVA
MAST-C	MAST-C-300	300L	632×1000mm	1415×890×1780mm	710kg	AC 380V, 50Hz	20 kVA

# XG1.U Steam Sterilizer

## Product introduction

It can be widely used in department of stomatology and ophthalmology, operating room and other medical institutions. It is suitable for all wrapped or unwrapped solid instruments, A-class cavity instrument (dental hand-pieces and endoscopes), implantable instruments, dressing fabric and rubber tubes, etc.

## Product features

- Equipped with professional and systematized sterilizing programs of fabric, instrument, rubber, liquid, cavity, testing and auxiliary programs of BD, PCD and leakage.
- Temperature, pressure, time, running status, failure warning liquid-crystal display.
- Intelligentized drying system to guarantee the residual humidity of instrument and dressing no more than 0.2% and 1% respectively.
- Build-in efficient steam generator, microcomputer temperature control, time and energy saving.
- Equipped with printer to print date, time and process parameters.
- Over-heat auto protection device, dual door safety lock device, overpressure relief valve, short-circuit protection, and overpressure protection.
- Perfect four-level authority management system to avoid misoperation.



## Technical parameters

Design pressure: -0.1/0.25MPa      Accuracy of temperature display: 0.1℃  
Maximum working pressure: 0.23MPa      Accuracy of pressure display: 1KPa  
Vacuum limit: -0.080MPa      Chamber material: 304 stainless steel  
Sterilizing temperature: 105~136℃

Model	Order Code	Volume	Chamber dimension(φ×L)	Overall dimension(L×W×H)	Net weight	Power supply	Input power
XG1.U	XG1.UCD-100M	100L	400×850mm	1250×730×1660mm	260kg	AC 380V, 50Hz	11 kVA
XG1.U	XG1.UCD-135M	135L	500×710mm	1110×750×1742mm	400kg	AC 380V, 50Hz	11.5 kVA
XG1.U	XG1.UCD-185M	185L	500×950mm	1350×750×1742mm	460kg	AC 380V, 50Hz	11.5 kVA
XG1.U	XG1.UCD-300M	300L	632×1000mm	1400×890×1780mm	750kg	AC 380V, 50Hz	18 kVA



# XG1.C Steam Sterilizer

## Product introduction

It is applicable for the sterilization of unpacked solid instrument in department of stomatology, ophthalmology, operation room and CSSD.

## Product features

- Touch screen display of temperature, pressure, time, running status and failure warning.
- Equipped with professional and systematized sterilizing programs of fabric, instrument, rubber and liquid.
- The positive pressure air-discharging system will effectively discharge the cold air from chamber to improve steam saturability.
- Build-in efficient steam generator, microcomputer temperature control, time and energy saving.
- Equipped with post-drying function which makes the residual humidity of sterilized articles less than 3%.
- Equipped with printer to print date, time and process parameters.
- Over-heat auto protection device, dual door safety lock device, overpressure relief valve, short-circuit protection and overpressure protection.
- Perfect four-level authority management system to avoid misoperation.



## Technical parameters

Design pressure: 0.25MPa  
Maximum working pressure: 0.23MPa  
Sterilizing temperature: 105~136℃  
Chamber material: 06Cr19Ni10 stainless steel (304)  
Accuracy of temperature display: 0.1℃  
Accuracy of pressure display: 1Kpa

Model	Order Code	Volume	Chamber Dimension (Φ×L)	Overall Dimension (L×W×H)	Net weight	Power supply	Input power
XG1.C	XG1.CD-100M	100L	400×850mm	1250×730×1660mm	260kg	AC 380V, 50Hz	10 kVA
XG1.C	XG1.CD-135M	135L	500×710mm	1110×750×1742mm	400kg	AC 380V, 50Hz	11 kVA
XG1.C	XG1.CD-185M	185L	500×950mm	1350×750×1742mm	460kg	AC 380V, 50Hz	11 kVA
XG1.C	XG1.CD-300M	300L	632×1000mm	1400×890×1780mm	750kg	AC 380V, 50Hz	17 kVA

# Clean Q Clean Electric Steam Generator

## Product introduction

Clean Q series clean electric steam generator produces clean steam by heating pure water. It has advantages of small size, fast heating, no pollution, easy operation and high reliability. It can effectively solve the rust pollution on instrument and dressing material package.

## Product feature

- **Safe and reliable**  
Low water volume, more safety, water volume less than 30L.
- **High heat efficiency**  
High heating density, heat efficiency up to 98%, energy saving and environmental protection.
- **High steam production speed**  
From the powered on to rated pressure (0.65Mpa), only 10 minutes.
- **Steam cleaner**  
All stainless steel material, with automatic dirty discharge function, automatic timing to eliminate impurities inside the generator, improve the cleanliness of the steam
- **Automatic control**  
One button start and fully automatic control, automatic water addition and water lack automatic cut off, heating automatic turn on or off according to the produced steam pressure, simple operation.



## Safety protection

- Heating element contactor adhesion protection
- Heating element over-current protection
- Low water level protection
- Heating element stepped starting
- Heating element overall heat protection
- Water filling overtime protection
- Water filling pump overload protection
- Dual pressure switch control
- Emergency stop
- Concentrated sewage system

Model	Rated power (kVA)	Rated evaporation (Kg/h)	Rated steam pressure(Mpa)	Designed heat efficiency	Material	Overall size (W×H×Dmm)	Service life	Net weight (Kg)
Clean Q60	60	80	0.65	0.98	All stainless steel	830×1800×1198	8 years	450
Clean Q90	90	120						
Clean Q120	120	160						
Water resource: Pure water, electrical conductivity≤15μs/cm								
Power supply: 380V, 50Hz								



MOST-T tabletop  
steam sterilizer

Class B

Product Introduction

MOST-T series: T18/24/45/80 is a Class B tabletop sterilizer. As a type of high pressure sterilizer, it takes steam as its sterilization medium which is fast, safe and economic. They are common used in stomatological department, ophthalmological department, operating room and CSSD to make the sterilization for warped or unwrapped instrument, fabric, utensils, culture medium, unsealed liquid, etc. The design of chamber accords with state GB1502011, GB8599-2008, CE and EN285 standard.

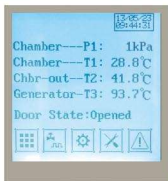


18/ 24 / 45L

60/ 80L

Product features

- Built-in open-type water tank**  
Water tank in open type makes it easy to be cleaned. It is available to continuously run with one time water filling, until getting the reminder of replacing the water. The water monitoring module in the tank ensures the enough water level and water quality, while offering the qualified steam to the chamber and keeps the cycle running stably.
- Brand-new display interface**  
LCD screen can show temperature, pressure, time, running process, error and alarm information, etc. Sterilization information is more obvious and easier to observe the running state.
- Multiple safety protection devices**  
Over temperature automatic protection device, multiple control and protection for steam generator, door safety interlock protection and dual chamber over-pressure protection, electronic circuit safety device.



- Automatic door structure**  
T18/T24/T45 adopts automatic door structure, fast and simply operation, protecting the operators from scald. T60/T80 adopts multi-point synchronous linkage pressing technology, more reliable and durable.
- Efficient vacuum**  
Efficient vacuum system, low working noisy, vacuum lower limit can reach over -90kPa, vacuum in high speed, perfect drying performance, thorough sterilization.
- A variety of programs**  
Sterilization programs: Unwrapped, Wrapped, Rubber, User01, N-Quick, B-Quick, P-Quick  
Test Programs: BD & Helix, Leak Test  
Auxiliary Program: Preheat, Drying, Washing
- Efficient Steam generator**  
T18/T24/T45 adopts built-in instant steam generator, T60/T80 adopts built-in energy-storage type steam generator producing steam in high speed and good quantity.
- Other features**  
Pulse vacuum, heating, sterilization, exhausting, vacuum drying totally automatic.  
Chamber is heating by film heater, saving energy and time.

Model	Order Code	Class type	Chamber dimension (φxL)mm	Overall dimension (LxWxH)mm	Power supply	Input power (kVA)	Temperature range	Net weight	Design pressure	Design temperature	Loading Tray
MOST-T	T18	Class B	250x350	560x530x450	AC 220V 50Hz	2.6	105-138 ℃	55Kg	-0.1/0.3Mpa	144 ℃	
MOST-T	T24	Class B	250x450	660x530x450	AC 220V 50Hz	2.6	105-138 ℃	65Kg	-0.1/0.3Mpa	144 ℃	
MOST-T	T45	Class B	316x618	830x640x550	AC 220V 50Hz	5.8	105-138 ℃	115Kg	-0.1/0.3Mpa	144 ℃	
MOST-T	T60	Class B	358x595	1002x730x560	AC 220V 50Hz	7.4	105-138 ℃	160Kg	-0.1/0.3Mpa	144 ℃	
MOST-T	T80	Class B	358x717	1002x730x560	AC 220V 50Hz	7.4	105-138 ℃	180Kg	-0.1/0.3Mpa	144 ℃	



MOST-T tabletop  
steam sterilizer

Class S

Product Introduction

MOST-T series: T24-S/45-S/80-S is a Class S tabletop sterilizer. As a type of high pressure sterilizer, it takes steam as its sterilization medium which is fast, safe and economic. They are common used in medical health care institution or R & D institution to make the sterilization for warped or unwrapped instrument, fabric, utensils, culture medium, unsealed liquid, etc. The design of chamber accords with state GB1502011, GB8599-2008, CE and EN285 standard.

Product features

- Built-in open-type water tank

Water tank in open type makes it easy to be cleaned. It is available to continuously run with one time water filling, until getting the reminder of replacing the water. The water monitoring module in the tank ensures the enough water level and water quality, while offering the qualified steam to the chamber and keeps the cycle running stably.
- Brand-new display interface

LCD screen can show temperature, pressure, time, running process, error and alarm information, etc. Sterilization information is more obvious and easier to observe the running state.
- Multiple safety protection devices

Over temperature automatic protection device, multiple control and protection for steam generator, door safety interlock protection and dual chamber over-pressure protection, electronic circuit safety device.



Model	Order Code	Class type	Chamber dimension(φxL)mm	Overall dimension(LxWxH)mm	Power supply	Net weight		Input power(KVA)	Temperature range	Chamber material	Design pressure	Design temperature	Loading Tray
MOST-T	T24-S	Class S	250×450	660×530×450	AC 220V 50Hz	65Kg		2.6	105-138℃	Stainless steel 304	-0.1/0.3Mpa	144℃	
MOST-T	T45-S	Class S	316×618	830×640×550	AC 220V 50Hz	115Kg		5.8	105-138℃	Stainless steel 304	-0.1/0.3Mpa	144℃	
MOST-T	T80-S	Class S	358×717	1002×730×560	AC 220V 50Hz	180Kg		7.4	105-138℃	Stainless steel 304	-0.1/0.3Mpa	144℃	



18/ 24 / 45L

60/ 80L

- Automatic door structure

T18-S/T45-S/T80-S adopts automatic door structure, operation fast and simply, protecting the operators from scald. T80-S adopts multi-point synchronous linkage pressing technology, more reliable and durable.
- A variety of programs

Sterilization programs: Unwrapped, Wrapped, Rubber, User01, N-Quick  
Auxiliary Program: Preheat, Washing
- Efficient Steam generator

T24-S/T45-S adopts built-in instant steam generator, T80-S adopts built-in energy-storage type steam generator producing steam in high speed and good quantity.
- Other features

Heating, sterilization, exhausting, drying totally automatic.  
Chamber is heating by film heater, saving energy and time.



TMQ.C tabletop steam sterilizer

Class N

Product Introduction

TMQ.C series: TMQ.C-U23K is a Class N tabletop sterilizer. As a type of high pressure sterilizer, it takes steam as its sterilization medium which is safe and economic. They are common used in small medical health care institution or R & D institution to make the sterilization for the small package warped or unwrapped solid instrument, fabric, utensils, culture medium, unsealed liquid, etc. The design of chamber accords with state GB1502011, GB8599-2008, CE and EN285 standard.



Product features

- Manual water filling, exhaust and dry.
- Automatic heating, sterilization process.
- World famous brand pressure switch.
- Automatic pressure control.
- Steam and water inner circulation system, no need external water supply.
- High accuracy analogue pressure gauge.

Technical parameters

- Design pressure: 0.28MPa
- Design temperature: 150℃
- Maximum working pressure: 0.23MPa
- Temperature range: 105~134℃
- Accuracy of pressure control: 0.005MPa
- Chamber material: 06Cr19Ni10 Stainless steel

Safety devices

- Over temperature automatic protection device.
- Door safety interlock device.
- Safety valve for over pressure exhausting.
- Short-circuit protection and over pressure protection.
- Alarm buzzer for error reminder.

Installation conditions

- Working environment: clean, dry, shady and cool, ventilated, small temperature difference
- Room temperature 5℃—40℃
- Maximum relative humidity 85%。
- Allowable scope range of the fluctuation of voltage ±10%。
- Water requirement
- Water quality: Distilled water or pure water,
- Electro conductivity: ≤15μS/cm
- The content of bleach: ≤2mg/l
- PH value: 5—7
- Hardness: ≤0.02mmol/l
- Fill the distilled water into the clean water tank; the water should up to high water level.



Loading rack



Loading tray

Model	Volume	Chamber Dimension (Φ×L)	Overall Dimension (L×W×H)	Net Weight	Voltage	Power Frequency	Input Power
TMQ.C-U23K	23L	250×440mm	580×510×375mm	36kg	220v	50Hz	2.0Kw





## Vertical steam sterilizer

### LMQ.C vertical steam sterilizer Automatic model

#### Product Introduction

LMQ.C series is one of the vertical sterilizers. It takes steam as its sterilization medium which is safe and economic. They are common used in small hospital, clinic, health care institution, laboratory to make the sterilization for fabric, utensils, culture medium, unsealed liquid, rubber, etc. The design of chamber accords with state GB1502011, GB8599-2008, CE and EN285 standard.

#### Product features

- Microcomputer control technology, touch-key
- Display of dynamic sterilizing process graph, LED display of chamber temperature, time and fault code
- Equipped with sterilizing programs of unpacked instrument, instrument parcel, dressing, rubber and fluid medium
- Dynamic pulsed exhausting function, totally exhaust the cold air from chamber to guarantee steam saturation
- Chamber heating and heat-dry function effectively improve the drying result after sterilization
- Build-in water tank, steam and water inner circulation
- Over-heat auto protection device, door safety lock device, overpressure relief valve, short-circuit protection, overpressure protection and insulated door cover
- Optional printer



LMQ.C-50E / LMQ.C-80E

Design pressure: 0.28MPa  
Maximum working pressure: 0.23MPa  
Solution temperature: 60~100℃  
Design temperature: 150℃  
Temperature range: 105~136℃

Insulation temperature: 40~60℃  
Chamber material: 304 stainless steel  
Accuracy of temperature display: 0.1℃  
Accessories: 2 stainless steel baskets



#### Technical parameters

Model	Order code	Volume	Chamber Dimension(Φ×L)	Overall Dimension (L×W×H)	Net Weight	Voltage	Power Frequency	Input Power
LMQ.C	LMQ.C-50E	50L	316×667mm	616×476×990mm	55kg	220V	50Hz	5kVA
LMQ.C	LMQ.C-80E	80L	386×695mm	688×546×1030mm	75kg	220V	50Hz	5.3kVA
LMQ.C	LMQ.C-100E	100L	386×860mm	688×546×1195mm	92kg	220V	50Hz	5.3kVA

### LMQ.C vertical steam sterilizer Semi-automatic model

#### Product Introduction

LMQ.C series is one of the vertical sterilizers. It takes steam as its sterilization medium which is safe and economic. They are common used in small hospital, clinic, health care institution, laboratory to make the sterilization for fabric, utensils, culture medium, unsealed liquid, rubber, etc. The design of chamber accords with state GB1502011, GB8599-2008, CE and EN285 standard.

#### Product features

- Manual water injection, exhausting and drainage system
- Automatic control of heating and sterilizing process
- Manual dynamic pulsed exhausting function, totally exhaust the cold air from chamber to guarantee steam saturation
- Horizontal sliding door equipped with reliable self-rising sealing gasket, convenient operation
- Over-heat auto protection device, door safety lock device, overpressure relief valve, short-circuit protection, overpressure protection and insulated door cover



Design pressure: 0.28MPa  
Design temperature: 142℃  
Temperature range: 105~138℃  
Chamber material: 304 stainless steel  
Accuracy of temperature display: 0.1℃  
Accessories: 2 stainless steel baskets



#### Technical parameters

Model	Order code	Volume	Chamber Dimension(Φ×L)	Overall Dimension (L×W×H)	Net Weight	Voltage	Power Frequency	Input Power
LMQ.C	LMQ.C-50EJ	50L	316×667mm	500×476×990mm	50kg	220V	50Hz	5.0kVA
LMQ.C	LMQ.C-80EJ	80L	386×695mm	570×546×1030mm	55kg	220V	50Hz	5.3kVA



# H<sub>2</sub>O<sub>2</sub> Low Temperature Plasma Sterilizer



PS-100X



PS-100XP



PS-200X



PS-40X

## Product introduction

SHINVA Plasma sterilizer takes H<sub>2</sub>O<sub>2</sub> as sterilizing agent and form plasmatic state of H<sub>2</sub>O<sub>2</sub> by electromagnetic field under low temperature. It combines both gaseous and plasmatic H<sub>2</sub>O<sub>2</sub> to make sterilization for the items in chamber and decomposes the residual H<sub>2</sub>O<sub>2</sub> after sterilization.

It is widely used in CSSD or other medical institute for the sterilization of electric wire and cable, optical glasses and glass lens, power equipment and batteries, endoscopes, catheter, nonmetallic and other wet or heat sensitive instruments.

## Scope of application

The sterilizer is applicable to sterilize the medical instruments that are thermolabile or non-moisturetight. It is not applicable to the sterilization of liquid, powder or cotton fabrics. All the medical instruments that meet the following conditions can be processed by this sterilizer.

### PS-100:

- Metal tubular instrument: inner diameter≥1mm; length≤500mm
- Nonmetal tubular instrument: inner diameter≥1mm; length≤2000mm

### PS-200:

- Metal tubular instrument: inner diameter≥0.8mm; length≤300mm
- Nonmetal tubular instrument: inner diameter≥1mm; length≤1000mm



# H<sub>2</sub>O<sub>2</sub> Low Temperature Plasma Sterilizer

## Product features

### Low temperature sterilization

The sterilization temperature is 50±5℃ which is much lower than steam sterilization. It is dry sterilization that has no harm on instrument, so it extends the device service life.

### Safe and environment friendly

The matter after sterilization is water and oxygen molecule that have no toxic harm to staff or patient, and there is no need for drainage or air exhausting. High efficient H<sub>2</sub>O<sub>2</sub> filter is installed in the exhausting outlet to guarantee no H<sub>2</sub>O<sub>2</sub> pollution to the environment.

### Time-saving and cost-efficient

Rectangular chamber has greater capacity, high efficiency and short sterilizing cycle (≤50mins). The sterilized articles can be used directly without extra processing. It can increase the instrument turnover and decrease the storage of precious instrument to cut cost indirectly.

### Convenient

Only power supply is needed for installation. The system adopts man-machine control interface with intelligent program design. Equipped with foot switch (alternative) and integrated biological incubator (alternative).

### Multiple models

The door structure of the sterilizer is customizable (single or double door). To meet pharmaceutical factory needs, chamber material can be stainless steel.

### Reliable sterilization

The chamber adopts alloy material which has good thermal conductivity to guarantee a stable temperature in the chamber. The purification system makes the H<sub>2</sub>O<sub>2</sub> diffuses uniformly. The low temperature storage system provides a stable concentration of H<sub>2</sub>O<sub>2</sub>.

### Safe sealing door

The sterilizer adopts mandril-driving auto overhead door with reliable sealing function and safe lock device to guarantee personal safety.

### Data management

The 2048M storage (alternative) can store original data for inquiring. Mini printer can be used to print operation data timely. There are two types of record methods to guarantee the data is 100% acquirable.

### Advanced configuration

The vacuum pump, controller, pressure transmitter and other key components are world famous brand. The sterilizer equipped with multiple programs and bar code identification system (alternative).

### Reassuring

We provide comprehensive operation training materials to key components maintenance intelligent reminding system for your convenience.

## Alternative configuration

### USB flash disk storage

Timely sterilizing information storage to guarantee all data can be safely stored and traced during the sterilizer service life. This configuration can also be updated to traceability system.

### Integrated biological incubator

The biological incubator will timely display temperature and incubate time. It equipped with independent control system that could work in the case of the sterilizer switched off.

### Foot switch

Simply kick the switch to open or close the door.

### Alloy storage rack

The alloy storage rack realizes that sterilized articles can be separately stored.

### Metallic sterilizing container

To improve sterilizing result, we provide various sterilizing container for different kinds of instruments and operation kits.

### Auto elevating trolley

The trolley equipped with auto elevating platform, chargeable lithium battery. The convenient memory function could record three different positions.



## Auto elevating trolley

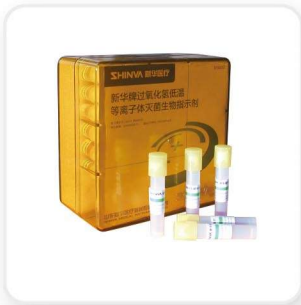
Order code	T-100	T-200
Overall dimensions(L×W×H)mm	1150×780×1165	1650×780×1165
Suitable sterilizer	PS-100	PS-200



Technical Parameters

Model	PS-40X	PS-100		PS-200	
Order code	PS-40X	PS-100X	PS-100XP	PS-200X	PS-200XP
Chamber dimensions (L×W×H)mm	650×380×260	750×450×400	750×450×400	1250×450×400	1250×450×400
Volume (L)	64	135		225	
Overall dimensions (L×W×H)mm	850×725×750	990×760×1600	990×760×1600	1460×760×1600	1460×760×1600
Weight (Kg)	200	400		500	
Power supply	220V 50Hz	380V 50Hz		380V 50Hz	
Power (Kw)	3.5	3.8		4.7	
Environment temperature	10~40				
Minimum installation room(L×W)mm	1500×900			2000×1200	
Minimum repair distance	1 meter for each side				

Consumable items



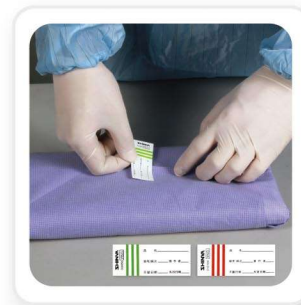
**Biological indicator (self-contained)**  
Bacteria: Thermophilic fat bacillus  
Quantum: 2~5×10<sup>6</sup>



**Chemical indicator card**



**Microbicide**  
Name: hydrogen peroxide (H<sub>2</sub>O<sub>2</sub>)  
Concentration: 60%  
Specification: 12 capsules per cassette



**Chemical indicator label**



**Paper-plastic wrapping bag**  
Size: wide: 75/100/150/250mm



**Non-woven fabric**  
Size: 500×500mm, 800×800mm, 1200×1200mm

Medical Vacuum Dryer



FEST-L100

Product introduction

Based on the principle that the boiling point of water will be reduced under low-pressure state, Medical vacuum dryer can make the water boiling at lower temperatures. With boiling and vaporization, the water on the outer and inner surface of the instruments can be quickly separated. In the meanwhile, the vacuum pump will exhaust the vaporized steam rapidly. With ventilation valve intermittent opening, it will speed up the air flow in the chamber to achieve the purpose of rapid and thorough drying for the instrument loadings.

Four major advantages:

- **Security protection**  
The vacuum dryer can achieve drying under low pressure and low temperature environment, which can effectively avoid the damage from the high temperature;
- **Wide range of application**  
Can dry for various types of precision instruments, complex structure devices and thermal sensitive instruments;
- **Drying fast and thoroughly**  
Can achieve completely drying for items in short time.
- **Energy efficient**  
Vacuum drying at a lower temperature, can achieve drying with less heat.



FEST-L100H/100HS

Product advantages

- The chamber is made of high-quality aluminum alloy rust-proof welding plate, with excellent thermal conductivity, smooth surface, high heat radiation efficiency, nice chamber temperature control, effective drying performance;
- The outer wall of the tank is coated with PTC heating film, which is safe, efficient and uniform.
- Toughened glass seal, high-perspective window, to ensure that the seal at the same time in operation to observe the internal situation;
- I electric lock, automatic detection of door shut, safe and convenient, to avoid manual operation caused by misuse;
- I high efficiency vacuum pump, running smoothly, low noise, low vibration, taking the time fast, easy maintenance;
- Control system with 7-inch color touch screen display control, can display the bulkhead temperature, cabin pressure, running time, alarm information and other parameters; a key to start quickly and easily, with automatic fault detection, built-in 10 sets of procedures, 4 sets of default program , The user can adjust the parameters according to their own needs. Process intuitive, easy to operate;
- I The bottom of the device is equipped with a water tray to collect the sent condensate, no external exhaust pipe.



Technical Parameters

	FEST-L50A	FEST-L50	FEST-L50H	FEST-L50HS	FEST-L100	FEST-L100H	FEST-L100HS
Overall size (WXHxD)	550x1560x860	530x1350x860		530x1350x870	530x1565x860		550x1565x870
Chamber size mm	Φ300×700	320×220×700					
Chamber type /Volume	Round /50L	Square/50L			Square/100L		
Outside cove r	Steel stoving varnish in white color		Stainless steel		Steel stoving varnish in white color	Stainless steel	
Chamber quantity	Single chamber/Single door			Single chamber /Double door	Double chamber/Single door		Double chamber /Double door
Tray quantity	2 Pieces				4 Pieces		
Weight	150kg	140kg	145kg	165kg	190kg	195kg	235kg
Drying time	0～99min						
Temperature range	Room temperature～65℃						
Power	2kVA				3kVA		
Power supply	AC220V, 50Hz						
Control method	LCD display , Touch button operation	Colorful touch screen					

100% Ethylene Oxide Gas Sterilizer

Product introduction



XG2.C-130 / XG2.C-220

XG2. C series sterilizer takes 100% ethylene oxide (EO) gas as sterilization medium. It is mainly used to make sterilization for precise medical instrument, optical instrument, and medical electronic instrument, plastic and medical materials that cannot bear with high temperature and wet sterilization.

EO gas is one of the most efficient low temperature sterilization agents. It has advantage of wide-pedigree bacterium killing range, strong penetrability, no damage and pollution, easy and reliable chemical and biological monitoring method.

Product features

- **Negative pressure in whole cycle**  
Chamber pressure is always negative in whole cycle ensures EO gas no leakage to outside during working.
- **Safety EO gas puncture device**  
EO gas can automatically punctured by special device in the chamber, no need human intervention.
- **Chamber pressure real-time monitoring function:**  
Any pressure abnormal in the chamber will cause the machine alarm.
- **Efficient ventilation system**  
Automatic pulse Vacuum ventilation ensures EO gas exhaust thoroughly.
- **Door interlock**  
The door cannot be opened while program is running.
- **EO gas concentration monitor (optional)**  
Accuracy: 0.1PPM, portable design.

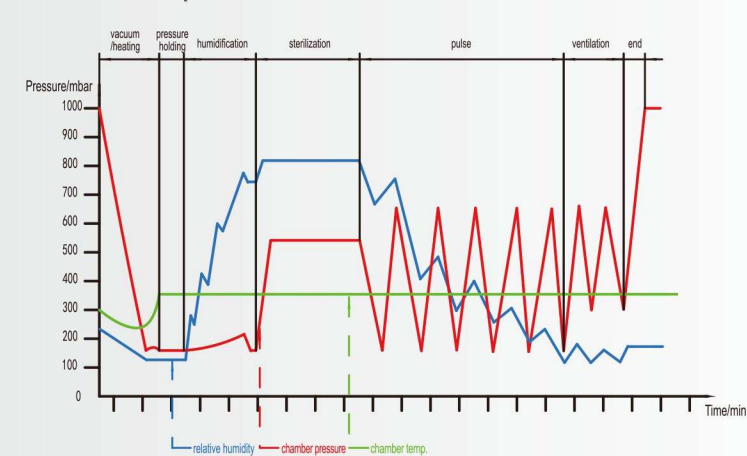


# 100% Ethylene Oxide Gas Sterilizer

- **Accurate parameter control**  
Sterilization temperature, humidity, pressure and time data are collected by relative sensor and transferred to PLC.
- **Perfect chamber temperature conducting**  
Chamber is made of aluminum alloy which has good thermal conductivity makes chamber temperature conducting fast and uniformity.
- **Dual sterilization temperature choices**  
High temperature 55°C , Low temperature 37°C .
- **Humidify control system**  
Humidity sensor in high accuracy ensures chamber humidity keep in stable level.
- **Power off memory function**  
Once power off, the sterilization data will be saved automatically and will automatically continue the sterilization when power on.



Sterilization process



## Technical parameters

Model	XG2.C	XG2.C
Order code	XG2.C-130	XG2.C-220
Chamber dimension (L×W×H)mm	750×450×400	1250×450×400
Overall dimension	950×860×1730	1450×860×1730
Chamber volume L	135	225
Net weight Kg	300	400
Input power	3.5kVA, 220V,50Hz	4.5kVA,220V,50Hz

EO gas can		
Oder code	Z-100	V-170
Net weight	100g	170g
Suitable sterilizer	XG2.C-130	XG2.C-220
Sterilization concentration	735mg/L	750mg/L

Automatic lifting trolley		
Oder code	T-100	T-200
Loading platform dimension (L×W)mm	800×400	1300×400
Overall dimension(L×W×H)	1150×780×1165	1650×780×1165
Sterilization concentration	735mg/L	750mg/L
Lifting range	720-1220	720-1220
Max. load capacity Kg	100	150
Weight	55	70
Suitable sterilizer	XG2.C-130	XG2.C-220





# Washer-disinfector Rapid-A-520

## Product introduction

Rapid-A-520 automatic washer-disinfector is high efficient washing equipment that researched and developed according to hospital actual situation. It is widely used for washing and disinfection of surgical instruments, wares, medical trays and plates, anesthesia instruments and corrugated hose in hospital CSSD or operating room. The greatest advantage of the equipment is labor-saving with fast washing speed which could shorten 1/3 operation time than ever.

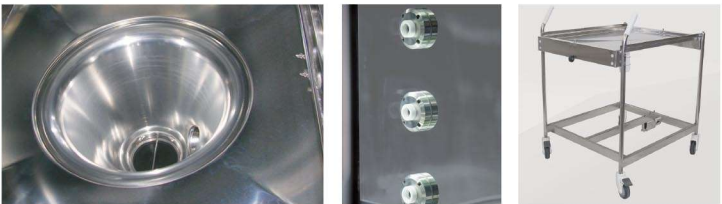


Rapid-A-520

## Product features

- Superb chamber design and process**  
The conical chamber in SUS316L is stretch forming at one time without dead corner and welding joint, which is better for smoothly draining and water saving.
- Intelligent control system**  
Double sides automatic vertical sliding doors, controlled by touch screen, which is convenient and safety. Cycle process is intelligent controlled by PLC, no need labor control. All the temperature, pressure, time, process stages, alarm can be shown on the touch screen and also be recorded by the built-in printers.
- A variety of programs**  
11 preset programs and 21 user-defined programs which can be defined according to user requirements
- Easy loading and unloading**  
Manual or automatic systems for loading and unloading are available. Washing rack, transfer trolley and convey system, fit in with the design of ergonomics, easy to operate and placement.

- Energy saving**  
Washing chamber with nice water saving structure; Pre-heat water tanks and special designed rising and heating system and pipeline layout make it save 30% water and energy consumption than ever.
- Fast and high efficiency**  
Rapid-A-520 is one of the fastest washer-disinfector in the world, which the standard cycle time is reduced to 28mins, including pre-washing, washing, 1st rising, 2nd rising, disinfection and drying. Meanwhile it can process 15 DIN trays per cycle.  
Water preheat system reduced the preparation time, there is no waiting time during the cycle running.



## Technical parameter for Rapid-A-520

Dimension	Chamber dimension/capacity (L×W×H)mm/L		Overall dimension (L×W×H)mm		Washing rack dimension (L×W×H)mm		Transfer trolley dimension (L×W×H)mm		Net weight (Kg)	Running weight (Kg)
	800×696×1115/520		1000×1270×1870		794×652×630		880×710×985		500Kg	600Kg
Parameter	Disinfection temperature		Wash temperature		Disinfection time		Cycle time (Stand program)		Drying temperature	
	80℃~93℃		45℃		0~999s		28min		70~120℃	
Max. loading capacity	Standard DIN tray		Middle dressing bowl(16cm)		Middle kidney basin		Anesthesia / Respiration tubes		All capacity	
	15pieces(480×250×50)		168 Pieces (specified rack)		144pieces(specified rack)		4-6		520L	
Energy supply	Saturated steam		RO water		Compressed air		Control power		Driving power	
	Pressure MPa	Flow	Pressure MPa	Flow	Pressure MPa	Flow	Voltage /Frequency	Power	Voltage /Frequency	Power
	0.3~0.5	50Kg/h	0.2~0.5	2000Kg/h	0.4~0.7	100L/min	220/50HZ	0.5KW	380/50HZ	16.5KW
Energy consumption (Standard program)	Saturated steam		Water		Washing detergent		Anti-rust lubricating agent		Power	
	7.8Kg/Cycle		100L/Cycle		25000ml ×concentration ratio		25000ml ×concentration ratio		2.8KWh	



# Washer-disinfector Rapid-M-320

## Product introduction

Rapid-M-320 is an economic manual door washer-disinfector that researched and developed according to requirements of smaller hospitals or institution. Its function and washing effective is equal with Rapid-A-520. It is also can be used for disinfection of surgical instruments, wares, medical trays and plates, anesthesia instruments and corrugated hoses in hospital CSSD or operating room.

## Product features

- Door structure**  
Rapid-M-320 adopts double pull-down door structure. After opening the door, it can be regarded as a working platform for loading the washing rack and items. The double doors are interlocked and have self-lock function.
- Strong glass window**  
Three layers tempered glass window with excellent sealing ensures the security, insulation and easily observing during washing process.
- Operation System**  
LCD display screen can shows all the temperature, pressure, time, process stage and parameters. Easily operation by touch button on the panel.  
SIEMENS PLC ensures the machine intelligent running and control. Built-in printer can automatically record the temperature, pressure, time, graph and A0 value.
- A variety of programs**  
11 preset programs and 15 user-defined programs which can be edited according to user equirements
- Outstanding loading capacity**  
12 DIN trays per cycle in four layers.



## Technical parameter for Rapid-M-320

Dimension	Chamber dimension/capacity (L×W×H)/mm/L		Overall dimension (L×W×H)/mm		Washing rack dimension (L×W×H)/mm		Net weight (Kg)	Running weight (Kg)	
	601×592×996/320		760×710×1930		590×558×630		300Kg	350Kg	
Parameter	Disinfection temperature	Wash temperature	Disinfection time		Cycle time		Drying temperature		Standard drying time
	80 C~93 C	45 C	0~99mins		Electric heated 42 min Steam heated 36 min		70~110 C		15
Max. loading capacity	Standard DIN tray		Middle dressing bowl(16cm)		Middle kidney basin		All capacity		
	10 (480×250×50mm)		36 Pieces		48 Pieces		320L		
Energy supply	RO water		Driving power (steam heated)		Driving power (steam heated)		Saturated steam		
	Pressure MPa	Flow	Voltage /Frequency	Input power	Voltage / Frequency	Power	Pressure MPa	Flow	
	0.2~0.5	1000Kg/h	380/50HZ	22.5KW	380/50Hz	9KW	0.3~0.5	1000Kg/h	
Energy consumption (Standard program)	Saturated steam Kg/cycle		RO water Kg/cycle		Washing detergent		Anti-rust lubricating agent	Power (Electric heated)	Power (Steam heated)
	10		100		25000ml ×concentration ratio		25000ml ×concentration ratio	10.5KWh	4.5Kwh

# Tunnel washer-disinfector DC series



## Product introduction

Tunnel washer-disinfector is internationally-advanced product which is researched aim at middle and large-scale hospitals. It has advantages of reliable quality, high work load and high efficiency and can be widely used for hospital reusable articles such as operating instrument, minimally invasive instrument, corrugated and anesthesia hose, glass ware, dental handpiece, baby product and general medical instrument. It is also applicable for hospital CSSD.

Modular design, compact structure, reliable performance, convenient installation  
It adopts modular design and provides multiple combinations to meet customer requirements.

The wide of the washer-disinfector is only 1200mm which provides convenient installation and furthest reduces the expenses and time of installation.



# Tunnel washer-disinfector DC series

## Product features

- **More efficient**  
Advanced design concept which makes the running speed 30% faster than traditional products.
- **Lager capacity**  
The lager capacity which can afford 15 DIN trays one time gives it 50% more than traditional products.
- **Better washing result**  
Well-designed spray arm with flexible rotary system and perfect connection between washing rack and chamber provide a better washing result than traditional products.
- **Easy-to-use**  
To operate this washer-disinfector, simply touch the 10.6 inches touch-screen.
- **Energy saving**  
New-designed pipeline system and dead-zone free structure save 25% water.
- **Reliable and sanitary inner-chamber delivery system**  
The chamber equipped with stainless steel wheels which are dead-zone free. All transfer executive components are installed out of chamber to protect the instrument from secondary contamination.
- **Better compatibility**  
The washing racks can also work with Shinva Rapid-A-520 or Super6000 washer-disinfector.
- **Humanized window design and good maintainability**  
The chamber adopts glass-faced sealing door and large-sized window on side of it. For maintenance purpose, all pipelines are fixed on one side of the washer-disinfector with open type door.
- **High-efficient hot-wind drying system**  
Two-stage drying system with sieve-style air inlet dramatically improves drying result and efficiency. It also solves the drying problems caused by temperature changes.
- **Diversified carrying system**  
For your convenience, we offer manual carry-trolley and auto washing rack carrying system to increase efficiency and reduce labor intensity.

## Technical parameters

Overall dimension (L×W×H)	Double-chamber: 1940×1165×2280 Triple-chamber: 2886×1165×2280 Four-chamber: 3980×1165×2280
Single chamber net weight	500Kg
Structure type	Vertical
Heating type	Water: steam-heating; Air: steam-heating and electric heating
Water consumption	28L/step/chamber
Water outlet	2" internal thread
Air outlet	φ63.5mm/drying chamberφ125mm
Water temperature	93℃

### Water quality

Softened water	4-7°d
Pure water	Conductivity≤15μs (25℃)
1°d=10mg/CaO=17.8mg/L CaCO3      Washing/rinse water: softened or pure water. Final rinse and disinfection water must be pure water.	

### Working conditions

Water supply (softened/pure water) connector	1/2"
Water supply pressure	0.2~0.5Mpa
Water flow	60L/min
Steam pressure	0.3~0.5Mpa

### Power supply

Double-chamber	380VAC,50Hz,17kVA
Triple-chamber	380VAC,50Hz, 20kVA
Four-chamber	380VAC,50Hz,25kVA

### Working condition

Temperature	5~40℃
Relative humidity	No more than 80% in 20℃

## Varieties of loading racks

SHINVA can supply different kinds of loading solutions and fittings to satisfy customers' requirement.



**Four/Five-level wash racks**  
They are mainly used in surgical instruments putting in DIN trays. Remarks: Wash racks are not recommended to load bowls and kidney trays.



**Humidifying bottles racks**  
Mainly used for cleaning humidifying bottles, also can be used to clean suitable sized test tubes, beakers, measuring cylinder utensils and vessels.



**Racks for bowls and kidney trays**  
It is used to clean bowls and kidney trays



**Anaesthesia/ Respiration tubes racks**  
It is used to clean anaesthesia /respiration tubes or vell

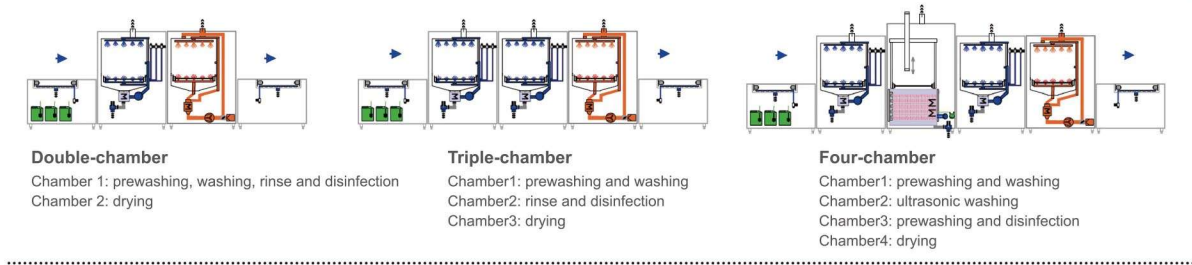


**Glassware wash racks**  
It is used to clean glassware. Remarks: Due to a wide range of glassware, we need users offer the size.



SHINVA will supply professional trolleys fitted with the equipment for wash racks transportation, and also ancillary equipment such as storage tables and transfer orbit, so that our equipment will be more in line with the humanism and ergonomic requirements.

## Multi-combination of washing programs





## Ultrasonic washer QX series

### Product introduction

QX series ultrasonic washer is essential washing machine in CSSD, operating room and laboratory.

SHINVA provides integrated ultrasonic washer solutions, including preliminary washing, secondary washing and deep washing with different frequency. Users can also choose the ultrasonic washing auxiliary machine for flushing and drying. The machine consists of washing tank, ultrasonic generator, ultrasonic transducer, heating tube, temperature transmitter, and water level transmitter, draining pump, basket and pipeline. It uses high frequency oscillation signal, which sent out by ultrasonic generator, and converts to high frequency mechanical oscillation signal and diffuses into the cleaning solution. The ultrasonic spreads forward in the cleaning solution to generate millions of tiny bubbles. During the process called 'Cavitation' the bubbles implode immediately to generate high pressure and impacts the articles to spall the fouling adhered on the surface and gap of the articles to achieve cleaning purpose.



### Product features

- Excellent washing effect and high washing accuracy that could clean those instruments with uneven surface or tiny gap.
- High washing speed improves working efficiency. It protects the instrument from contamination caused by hand contact.
- The tank and outer cover adopt high quality stainless steel which is durable and easy to clean.
- All tanks are auto water-injecting which injects water to certain water level.
- All tanks are equipped with reliable LCD monitor that could be controlled independently.
- It can be equipped with extended-function tank: flushing tank, drying tank.

**Flushing tank:** High pressure water flushing after ultrasonic washing. It is equipped powerful circulating pump and specialized nozzle to flush, rinse, disinfect and lubricating on instrument.

**Drying tank:** Used to dry the instrument after washing; the high quality heater and efficient fan ensures the thoroughly dry.



Ultrasonic washer



Flushing tank



Drying tank

## Automatic lifting ultrasonic washer

QX2000-A ultrasonic washer equipped with lift system that can lift the top lid and baskets automatically after washing which decreases the labor intensity.



### Technical parameters

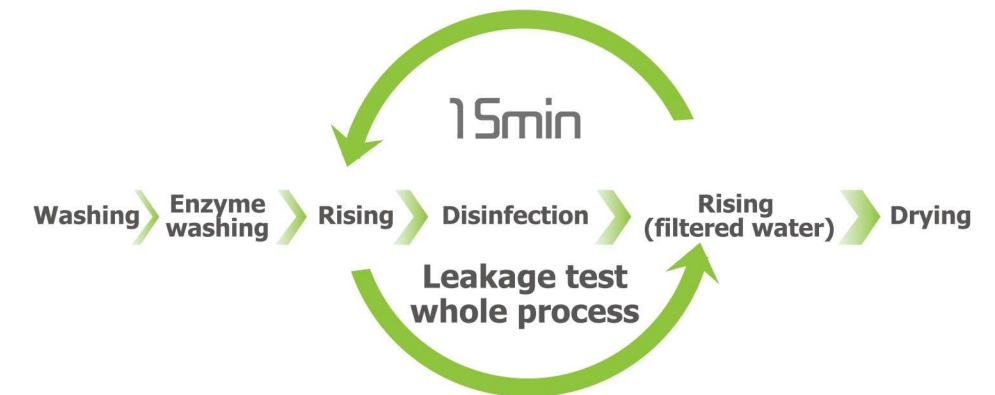
Model	QX2000					QX1500		
Order code	QX2000	QX2000-C	QX2000-G	QX2000-D	QX2000-S	QX1500	QX1500-D	QX1500-S
Chamber dimension (LxWxH) mm	600x420x330					700x300x310		
Overall dimension (LxWxH)mm	800x640x830					900x520x830		
Water consumption L	65	20x3		65	65	48	48	48
Max. Input power(kVA)	11.5	11.5	3	11.5	11.5	11.5	11.5	11.5
Ultrasonic power(kVA)	2			2	2	2	2	2
Function	Ultrasonic washing	Flush washing /lubricating /disinfection	Drying	Ultrasonic washing	Ultrasonic washing	Ultrasonic washing		
Frequency(kHz)	40			40/100	40/80/100	40	40/100	40/80/100
Remark	Single frequency			Double frequency	Triple frequency	Single frequency	Double frequency	Triple frequency

### Technical parameters for Automatic lifting ultrasonic washer

Model	QX2000		
Order code	QX2000-A	QX2000-DA	QX2000-SA
Chamber dimension (LxWxH) mm	600x420x330		
Overall dimension (LxWxH)mm	800x640x830		
Water consumption L	65		
Max. Input power(kVA)	11.5		
Ultrasonic power(kVA)	2		
Function	Ultrasonic washing		
Frequency(kHz)	40	40/100	40/80/100
Remark	Single frequency	Double frequency	Triple frequency

## Automatic Flexible Endoscope Washer-disinfector

Automatic Flexible Endoscope Washer-disinfector is designed based on the standard ISO15883-4 which is special used for washing and disinfection for Flexible Endoscope.



### High efficiency Washing

Rider series automatic endoscope washer can finish the entire washing and disinfection process for one piece of flexible endoscope within 15 minutes, greatly improving the efficiency of endoscopes turnover.

### Endoscope protection design

#### Leakage test function

The Endoscope leakage test will be finished before contacting with the liquid in the chamber, and can make continuous testing during the cycle. When the detected leakage value exceeds the set allowable value, the system will issue a visual and audible alarm signal, and automatic terminate the cycle.



### Process tracking system

#### Process data printing

The printer can print the washing and disinfection process data for each endoscope, making it easy for users to archive records.

#### Process data management

The system can collect the information of endoscope operators and the washing and disinfection process data can connect user's management computer system through network, which is easy access to the synchronization management for patient information and endoscope washing and disinfection information.



Operator information collection



Endoscope information collection



Rider 50



Rider 60



# Automatic Flexible Endoscope Washer-disinfector

## Self-disinfection function

- After finishing the maintenance, repairing or interruption for the machine, should run a self-disinfecting program.
- The self-disinfection function can thoroughly disinfect the machine chamber and pipe, including the 0.1μm filter, to prevent the washer-disinfector from becoming a source of pollution.



## 100% Washing and disinfection

- All-round, full pipe washing and disinfection**  
The washing chamber equipped with spray nozzle and rotating spray arm which can make washing and disinfection for the outer surface of the endoscope, while the circulating water can make continuous washing and disinfection for the entire inner cavity of the endoscope.
- Endoscope lumen pressure booster pump.**  
With independent endoscope lumen booster pump, can make continuously washing and disinfection, gas or water injection and make biopsy or suction lumen, to prevent the formation of bacterial biofilm.
- Filtered water rising**  
After disinfection, it will rinse the endoscope with water which is filtered by 0.1μm filter to avoid secondary contamination by unsanitary rising water.
- Drying function**  
The drying function can realize drying for inner lumen of the endoscope with two modes, air drying and alcohol drying.



## Perfect protection for operator

- Automatic door, foot pedal switch**  
Visualize automatic glass door, easy to observe the washing and disinfection status; foot pedal switch, the door can be opened by gently kicking the foot switch.
- Fully enclosed**  
Rider series automatic endoscope washer-disinfector was designed with fully enclosed structure. The automatic glass doors will press the door sealing gasket tightly, to prevent the smell of disinfectant and protection of the operator health maximum.
- Chemical additives automatic added**  
In the process of washing and disinfection, the chemical additives, such as enzymes, alcohol and disinfectants can be metered and added automatically
- Disinfectant automatic sampling function**  
Rider B series equipped with automatic disinfectant sampling device which is convenient for the users to monitor the concentration of disinfectant and to protect the safety of the operator.
- Disinfectant automatic addition and discharge function.**  
Rider B series equips with disinfectant automatic addition and discharge function. When adding the disinfectant, just pour the disinfectant into the washing chamber and start the disinfectant adding program. When discharge, just start the disinfectant discharge program.



Technical parameter		Rider 50A	Rider 50B
Weight(Kg)		100 kg	110kg
Water consumption/Cycle		25L	25L
Power supply		AC220V 50Hz	
Input power		1.5	1.5
Water supply	Water pressure	0.2~0.5	
	Water hardness	Calcium carbonate concentration< 120 mg/L	
	Water PH value	6.5~9	
Water discharge mode		Discharge by pump	
Overall dimension(LxWxHmm)		740×650×940	

Technical parameter		Rider 60A	Rider 60B
Weight(Kg)		200Kg	220Kg
Water consumption/Cycle		25L	25L
Power supply		AC220V 50Hz	
Input power		3	3
Water supply	Water pressure	0.2~0.5	
	Water hardness	Calcium carbonate concentration< 120 mg/L	
	Water PH value	6.5~9	
Water discharge mode		Discharge by pump	
Overall dimension(LxWxHmm)		740×1200×950	

## Center-HGZ Endoscope Storage Cabinet

### Product Description

Endoscope dry and storage is a very important link in the process of endoscope washing and disinfection. It directly relates to whether the endoscope storage is safe and whether the endoscope can be used directly and doesn't need to be washed and disinfected again.

Center-HGZ series endoscope storage cabinet is designed and developed according to the standard of Flexible Endoscope Disinfection Technical Specification and the factual condition of flexible endoscope storage all over the world. It adopts vertical hang as endoscope storage mode, which is required by Chinese national regulation and it suitable for all brands of endoscopes. The chamber structure is optimized and the capacity is improved to 9 sets of endoscopes. The new concept and design including intelligent storage, long-term effective storage and retrospective storage is imported on the product, realizing safe storage, controllability and traceability.



### Product Features

- Initiative new arc appearance.
- 5.7 -inch color touch control screen.
- Chamber integral forming, easy clean without bacteria residue.
- Tempered glass door is easy for observing chamber inner condition.
- Smart password electromagnetic lock, safe and reliable.
- Rotary type of endoscope hand system realizes 9 sets of endoscopes.
- Four layers, including top position, middle position, low position and bottom position, locate endoscopes to realize 360 degrees protection for endoscopes.
- LED cold light illuminator offers safe and reliable illumination without producing heat.



### Performance Features

- Long-term Effect Storage: 24hours positive pressure ensures outside air cannot enter chamber.
- Intelligent storage Mode: Daily working time can be set separately, auto start and stop, High Efficient and Energy-saving.
- Clean Storage: 0.3um HEPA replaces UV sterilization, guaranteeing the sterility of air.
- Intensified Dry Function: The sterile air supplied by medical level of air compressor and 0.3um HEPA dries the external and internal chamber, avoiding endoscope scarfskin damage resulted from heat air and second pollution resulted from unqualified air.
- Storage Capacity: Center-HGZ endoscope storage cabinet could store 9 endoscopes, Center-GZ1 could store 6 endoscopes and Center-GZ2 could store 12 endoscopes.
- Endoscope Storage Tracing System: It could scan endoscope information, trace the record of storage time and storage environment, guaranteeing the storage process is safe. (Optional)
- Automatic Monitoring: It could monitor storage environment parameters, such as storage temperature, ventilation pressure, humidity, guaranteeing the storage environment is safe.

## Center-GZ Endoscope Storage Cabinet

### Product Description

Center-GZ series endoscope storage cabinet is designed and developed according to the standard of Flexible Endoscope Disinfection Technical Specification and the factual condition of flexible endoscope storage all over the world. The external material is carbon steel, the chamber seal is excellent. The endoscopes are hung vertically in chamber.

Built-in automatic control of ultraviolet ray, recirculating air disinfection and illumination.

Center-GZ1 could store 6 endoscopes and Center-GZ2 could store 12 endoscopes.



### Product Features

- The material of chamber is made up of ABS and PMMA acrylic special composite and processed by special production process. Blister forming, smooth surface, easy clean without bacteria residue.
- Automatic Digital Tube Control, Center-GZ2 is equipped with a key switch control button.
- Transparent acrylic carbon steel door, ensuring good observation of chamber condition.
- Double circulation axial flow fan, guaranteeing good storage effect.
- The form of seal is magnetic seal. Tight seal without any gap and isolation Air from chamber.
- Vertical suspension system, Center-GZ1 could store 6 endoscopes and Center-GZ2 could store 12 endoscopes.
- Three layers, including top position, middle position and bottom position, locate endoscopes to realize protection for endoscopes.
- LED cold light illuminator offers safe and reliable illumination without producing heat.



### Performance Features

- Storage Effectiveness: Seal Storage ensures the chamber is isolated from outside air, guaranteeing the outside air cannot enter chamber.
- Storage Mode: UV sterilization and circulation ventilation can be completed by standard cycle. The time of UV sterilization and circulation ventilation can be set separately. The time can be stopped according to your setting and the energy is saved.
- Storage Capacity: Single door storage cabinet could store 6 sets of endoscopes and double doors storage cabinet could 12 sets of endoscopes.



# Medical Drying Cabinet



## YGZ-1600 series

YGZ-1600 series drying cabinet is kind of large capacity medical drying equipment designed according to the requirement of market to fulfill dry treatment of surgical instruments, glassware and respiratory therapeutic items. Easy to operate, the setup scope of drying temperature and time is 40℃~90℃ and 0s~30000s respectively. It is user custom, which can be set up freely. Two models of single-door and double-door are available.

To solve the problems that those like products are mainly used for drying catheter and poor drying effect, we change the structure of air intake system. This series drying cabinet adopts independent drying programs that could work not only for drying catheter but also other instruments. It is drying equipment with high performance price ratio.

- Application**  
Hospital CSSD, operating room and other departments in which items need to get dried.
- Capacity**  
It can handle 9 DIN standard surgical instruments trays and 36 pieces of anesthesia or respiration hoses.
- Control system**  
It equipped with reliable American Rabbit 2000 chip control system, LCD screen and 10 sets of programs. Parameters are convenient to adjust.
- Materials**  
The chamber is of top-quality 304 stainless steel with a thermal insulation jacket to avoid heat lost. The door is designed like a glass window for monitoring the inside working.



YGZ-1600S



Accommodate 9 DIN standard instrument trays



Catheter and humidification bottle support

### Standard configuration

Items	Quantity	Note
Main machine	1	304 stainless steel with double-glazing door
Rack	9	stainless steel
DIN standard instrument tray	9	stainless steel
Pipe support	2	stainless steel
Water collector	1	stainless steel

## YGZ-1600X seires

YGZ-1600X series drying cabinet is kind of high performance-price ratio equipment developed according to the market demand. It has advantages of good appearance, multiple functions, and convenient operation. It can be widely used for drying of different kinds of articles in hospital CSSD and operating room.

- It can be used for surgical operating instrument, glass ware, stainless steel dish and bowl, breathing tube and humidification bottle. Drying temperature setting range: 40~90℃ (adjustable); Drying time setting range: 1~99min (adjustable).
- Structure: The chamber adopts 304 stainless steel wire drawing board; outer cover adopts 304 stainless steel with plastic spray; the door is equipped with glass visual window.
- Classification: Single-door and double-door.
- Control: Independent drying programs, LCD screen, 10 sets of default programs with adjustable parameters.
- Working ability: Large capacity that could handle 16 DIN standard instrument trays or 48 anesthesia/breathing tubes at same time.
- The water collector which is installed on the bottom of the equipment could discharge water without door opening.
- Multi-functional castors provide convenient transfer and equipment fixing.



YGZ-1600XS



Bottom water collector



16 DIN standard instrument tray



Catheter and humidification bottle rack



LCD screen and indicating lights

### Standard configuration

Items	Quantity	Note
Main machine	1	304 stainless steel
Rack	8	stainless steel
DIN standard instrument tray	8	the quantity is customized
Pipe support	2	easy to use, multi-functional
Water collector	1	stainless steel



# YGZ-1000 series

YGZ-1000 series drying cabinet is kind of small-size drying equipment developed according to the market demand. It is mainly used for drying of surgical operating instrument, stainless steel dish and bowl, glass ware and plastic items. Drying temperature setting range: 40~90℃ (adjustable); Drying time setting range: 0~9999s (adjustable). According to appearance and material, it can be divided into YGZ-1000 (all stainless steel) and YGZ-1000X (outer cover with plastic spray).

● **Application**

Hospital CSSD, operating room and other departments in which items need to get dried.

● **Capacity**

It can handle 10 DIN standard instrument trays or stainless steel dishes/bowls.

● **Control system**

It equipped with reliable PLC which is assembled of American chip, 3 sets of default programs (A: operating instrument B: glass ware C: plastic article) and 2 sets of custom programs. The screen displays dynamic parameters timely which is intuitionistic and the parameters are adjustable. It is equipped with self-checking function.

● **Materials**

The whole chamber adopts 304 stainless steel board and thermal insulation jacket to avoid heat lost;

The triple-glazing door is designed like a glass window for avoiding heat lost and monitoring the inside working.

The unique design of the rack structure is easy to pick and place.



water collector



10 DIN standard instrument trays



rack push-pull structure

**Standard configuration**

Items	Quantity	Note
Main machine	1	double-layer 304 stainless steel board, triple-glazing glass window
Rack	5	stainless steel, each layer bears 2 standard instrument tray
DIN standard instrument tray	10	stainless steel, for containing instrument
Water collector	1	stainless steel



YGZ-1000



YGZ-1000X

# YGZ-500 Series

YGZ-500 series bench-top drying cabinet is kind of small-size drying equipment developed according to the market demand. It is mainly used for drying of surgical operating instrument, stainless steel dish and bowl, glass ware and plastic items. Drying temperature setting range: 40~90℃ (adjustable); Drying time setting range: 0~9999s (adjustable).



YGZ-500

● **Room-saving, convenient**

It is a small-sized and time-saving drying cabinet which is applicable for operating room or works with low temperature sterilizer to improve the turnover of precision instrument.

● **Materials**

- ◇ The whole chamber adopts 304 stainless steel board and thermal insulation jacket to avoid heat lost;
- ◇ The double-glazing door is designed like a glass window for avoiding heat lost and monitoring the inside working.

● **Application**

- ◇ It is applicable for hospitals, health institutions, scientific research institutions and laboratories.
- ◇ It is the best choice for drying of glass ware or stainless steel operating instrument.

**Standard configuration**

Items	Quantity	Note
Machine	1	304 stainless steel chamber, double-glazing glass window
Rack	2	stainless steel
DIN standard instrument tray	2	stainless steel, for containing instrument
Water collector	1	stainless steel

Order Code Technical Parameter	YGZ-1600S	YGZ-1600D	YGZ-1600XS	YGZ-1600XD	YGZ-1000(1000X)	YGZ-500
Overall size (W×H×D) mm	973×2200×630	973×2200×540	720×2230×750		705×1640×770	820×540×650
Chamber size (W×H×D)mm/Volume(L)	603×1602×373/360L		600×1602×510/500L		580×980×578/330L	550×450×330/80L
Net Weight	300Kg		280Kg		150Kg	50Kg
Door quantity	Double door	Single door	Double door	Single door	Single door	Single door
Structure	Vertical type					Tabletop type
Power supply	AC380V、50Hz		AC380V、50Hz		AC220V、50Hz	AC220V、50Hz
Environment temperature	5~40℃					
Relative humidity	20℃≤90%					
Power consumption	Thermal heater: 9kVA		Thermal heater: 8kVA		Thermal heater: 5.4kVA	Thermal heater: 2.5kVA
	Wind fan: 0.72kVA		Wind fan: 0.6kVA		Wind fan: 0.4kVA	Wind fan: 0.1kVA
	Rated power: 11kVA		Rated power: 9kVA		Rated power: 6.5kVA	Rated power: 3kVA