



TEOS POWERED FRAME STRUCTURE



Turkish Patent No: TR 201009615Y

Produced with a closed rail structure, Teos enclosure rails are clamped with a special non-welded clamping system. Their resistance to both vertical and horizontal pressures is extremely high compared to open rail structures. This force enables full resistance for the movement of the installed equipments and resistance in overcurrents.

TEOS EARTHING CONTINUTIY



Placed on the aluminium corner combination, the earthing hooks are tightly mounted on the uncoated inner surface of the rails by means of eroding. Thereby, the earthing continuity is ensured for all rails and their parts

Placed on the bottom-top inner parts of the front door, the earthing screw increases conductive surface. Thereby, the front door is more efficiently grounded as the most important part to be grounded.

Applied to all other cover plates, the earthing screws allow for the complete earthing of all enclosure cover plates. Furthermore, TEOS allows for earthing all parts by use of special grounding washers.

TEOS CORROSION PROTECTION

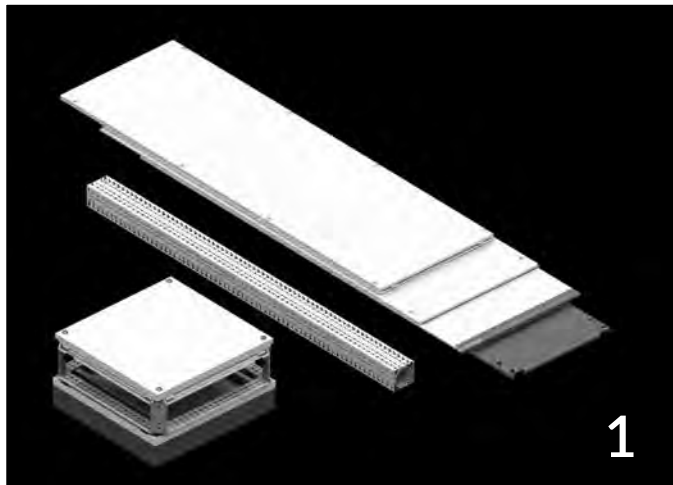


Teos closed frame made by galvanized steel (DIN EN 10142_00 DX51 D+Z) and coated iron-phosphated and powder coated from outside of the surface. Non-powder coated inside surface can not corrode because of the galvanized material style.

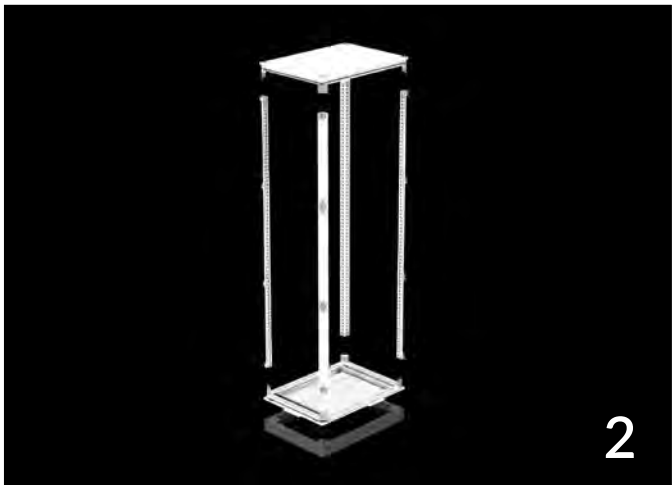
Manufactured from aliminum-cast (E-160) material, the rail connection corners do not corrode thanks to their aliminum structure.

All coated parts respectively undergo the automatic processes of washing, phosphating, deionized passivation- drying- coating- firing and are treated with active coating. 500 hour salt test resistance is acquired according to the test results of this process

TEOS EASY ASSEMBLING AND LOGISTICAL ADVANTAGES



1



2



3

Offered as flat package, the TEOS series is designed for an easy mounting in a minimal amount of time. It does not require angulation for the body and can be mounted between 15-20 minutes by two people.



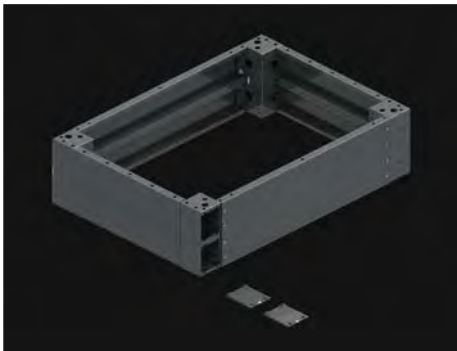
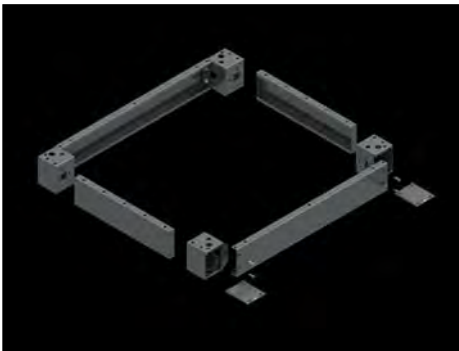
4

Offered as flat package, TEOS series save space during transportation and storage. However, since packages can be replaced with each other, they provide more solutions with less inventory.

You can access the Teos assembly video by scanning the QR code.



TEOS PLINTH SYSTEM



Front surfaces of the corner parts are open in the plinth system which is designed with a height of 100 mm and 200 mm. This enables not only an easy mounting on the enclosure but also an easy ground fixing. Upon the completion of this process, the plastic panel closes without use of screws.

Plinth front panels are mounted with screws while the side panels are screwed from the inside.

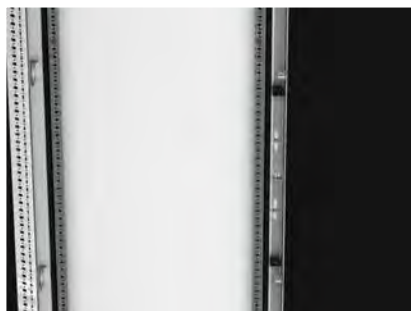
A separate corner can be used for plinth applications with a height of 200 mm as well as plinths with a height of 100 mm can be superimposed to reach the 200 mm height.

TEOS FRONT DOOR

Lock and hinge placed in four points



Wide Space and Strong Door Rail



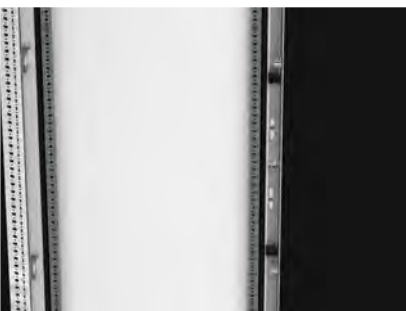
Since locking is performed on the rails, inner space of the cover plates allows for a maximum efficiency.

As the closed support rails are manufactured as a completely closed box, they are more resistant to bending. This ensures a stronger cover plate

Comfort Handle Lock with Insert Protection



Rigid and Durable Lock Structure



Lock failures experienced in most enclosures are prevented in TEOS. Thanks to their corrugated and long-lasting structure, the locking plates do not bend and corrode.

IP 55 - IP 65 PROTECTION CATEGORY



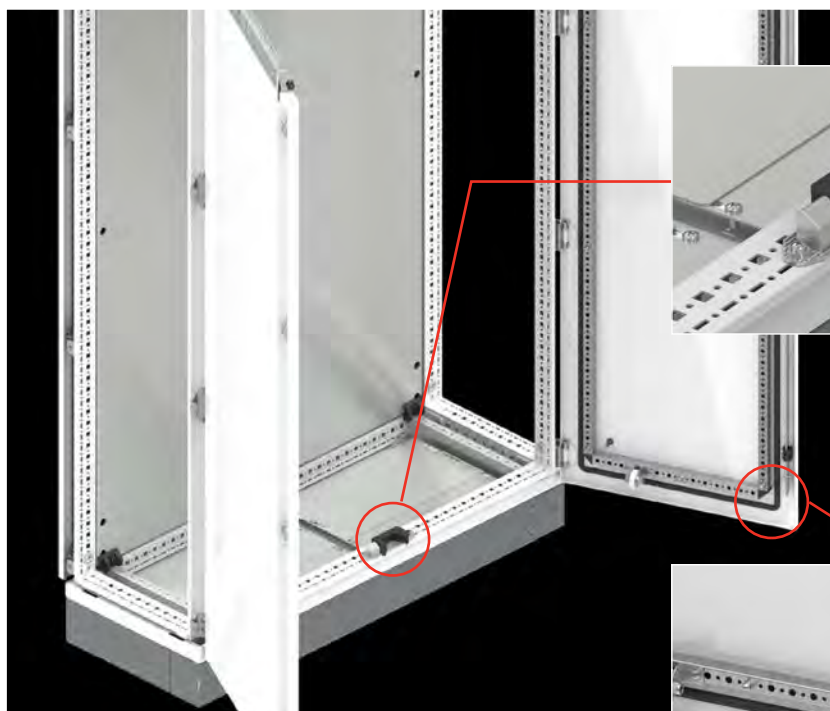
Sealing foam gaskets are used on the body door, back door, side panels and top panels of the enclosure. This gasket enables complete isolation between -40 and +100 C



All gaskets apply pressure on the convex frame curves. Dust and water particles are left in the space between the convex curves, and thus pressure on the gasket is prevented.



All seal applications on the covers press on the convex curves in the carcasses. Dust and water droplets are left in the area between these convex curves and the pressure on the seal is prevented.



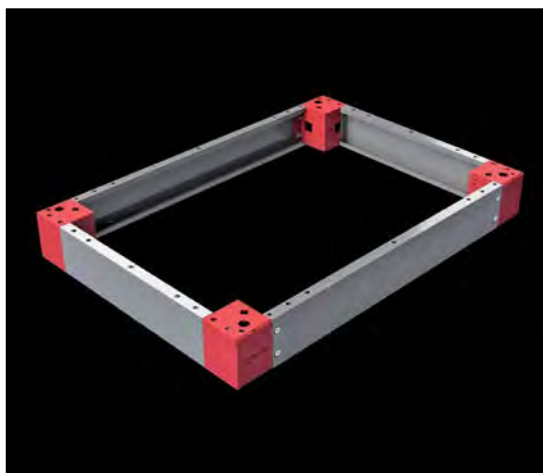
Applied to double-door enclosures, the insulating gasket assumes a full protective role between two panels and the frame when both doors close over the gasket.



Applied to all front doors and panels, the liquid seal is used in all double-door enclosures and acts as an insulator between two doors. Locking system of both doors work separately and this enables a full gasket pressing

SIZES and MODELS (DISASSEMBLED)

PLINTH CORNER PART



Relevant Size : PLINTH HEIGHT

Material : Corner part : 2,00 mm galvanized steel + RAL 7012 powder-coating
Plastic Panel : RAL 7012 ABS Plastic

Supply Includes : 4 pcs 100 mm or 200 mm high plinth corner part,
4 pcs plastic cover and mounting parts

PRODUCT CODE	TEOS Plinth Height (mm)
708.100	100
708.200	200

PLINTH FRONT COVERS



Relevant Size : ENCLOSURE WIDTH

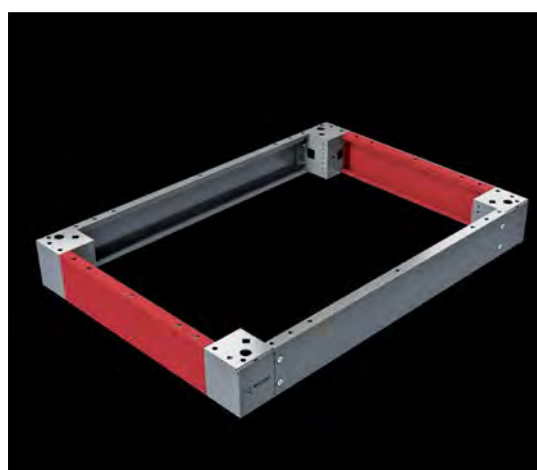
Material : 1,50 mm galvanized steel + RAL 7012 powder-coating

Supply Includes : 2 pcs 100 mm high front plinth panel and mounting parts

NECESSARY : 2 sets of front plinth panel group for 200 mm height plinths.

PRODUCT CODE	Enclosure Width (mm)
709.140	400
709.160	600
709.170	700
709.180	800
709.100	1000
709.120	1200

PLINTH SIDE COVERS



Relevant Size : ENCLOSURE DEPTH

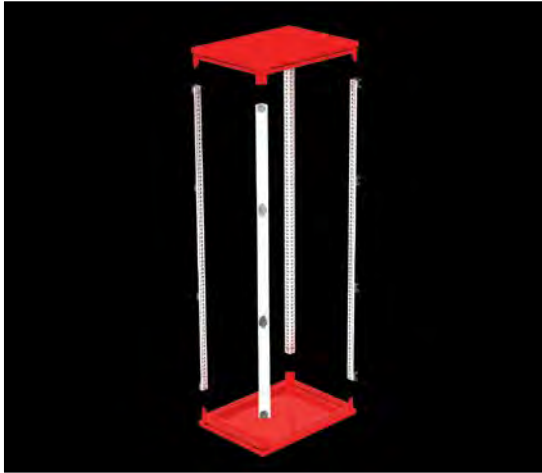
Material : 1,50 mm galvanized steel + RAL 7012 powder-coating

Supply Includes : 2 pcs 100 mm high side plinth panel and mounting parts

NECESSARY : 2 sets of front plinth panel group for 200 mm high plinths.

PRODUCT CODE	Enclosure Depth (mm)
710.140	400
710.150	500
710.160	600
710.180	800
710.100	1000

TOP/BOTTOM GROUP



Relevant Size : ENCLOSURE WIDTH x DEPTH
Material : Body : 1,50 mm galvanized steel+RAL7035 powder-coating
 Top Cover : 1,50 mm mild steel +RAL7035 powder-coating
 Bottom : 1,50 mm mild steel + RAL7035 powder-coating
 Gland Plate : 1,50 mm galvanized steel

Supply Includes : 1 set of upper body, 1 set of lower body, 1 pcs gland plate,
 1 pcs top cover and body mounting parts.

NOTE : 4 pcs eyebolts is added upon your request.

PRODUCT CODE	WIDTH (mm)	DEPTH (mm)
701.740	700	400
701.750	700	500
701.760	700	600
701.780	700	800
701.840	800	400
701.850	800	500
701.860	800	600
701.880	800	800
701.810	800	1000

VERTICAL FRAME GROUP



Relevant Size : ENCLOSURE HEIGHT

Material : Frame : 1,50 mm galvanized steel +
 RAL7035 powder-coating

Supply Includes : 4 pcs vertical frame

PRODUCT CODE	HEIGHT (mm)
702.120	1200
702.160	1600
702.180	1800
702.200	2000
702.220	2200

MOUNTING ACCESSORIES



19" SWING FRAME

Relevance : TEOS, NEO Modular, NEO Monoblock,
NEO HC Modular, NEO HC Monoblock

Material : 2,00 mm mild steel + RAL 7035 coating

Supply Includes : 1 set of swing frame
(lock-hinges included)

PRODUCT CODE	ENCLOSURE		
	WIDTH (W)	HEIGHT (H)	UNIT U
944.935	600	1200	22
944.936	600	1600	31
994.937	600	1800	36
944.938	600	2000	40
994.939	600	2200	45
944.940	800	1200	22
944.941	800	1600	31
944.942	800	1800	36
944.943	800	2000	40
944.944	800	2200	45



SIDE PANELS



Relevant size : ENCLOSURE HEIGHT x DEPTH

Material : 1,50 mm mild steel + RAL 7035 powder-coating

Supply Includes: 2 pcs side panel and mounting parts

PRODUCT CODE	HEIGHT (mm)	DEPTH (mm)
706.204	2000	400
706.205	2000	500
706.206	2000	600
706.208	2000	800
706.226	2200	600
706.200	2000	1000
706.220	2200	1000

SIZES and MODELS (DISASSEMBLED)

SOLID FRONT DOOR



GLAZED FRONT DOOR



Relevant size : ENCLOSURE WIDTH x HEIGHT

Material : Solid Door : 2,00 mm mild steel + RAL 7035 powder-coating
 Glazed Door : 2,00 mm mild steel + RAL 7035 powder-coating
 4,00 mm tempered glass

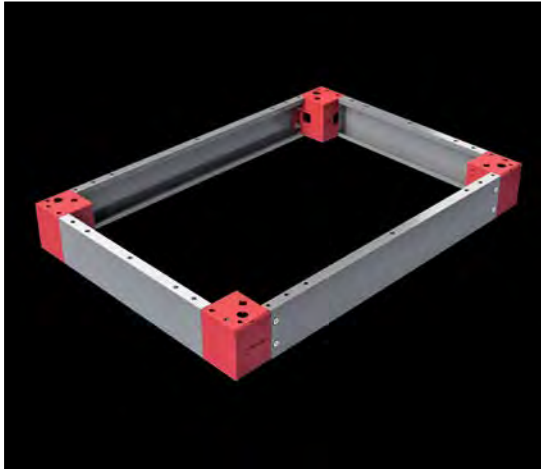
Supply Includes : Solid Door : 1 pcs solid door, 1 set of lock, 4 set hinges and door stiffeners
 Glazed Door : 1 adet Glazed Door , 1 pcs glazed door, 1 set of lock, 4 sets of hinge and door support profile

ATTENTION : 800 mm and 1000 mm wide enclosures come in both single and double-door versions. 1200 mm wide enclosures come only in double-door versions. Only 600 mm and 800mm wide enclosures come with glazed doors.

ATTENTION : Doors of the double-door version are delivered in two separate packages.

PRODUCT CODE	WIDTH (mm)	HEIGHT (mm)	Door
724.812	800	1200	Single
724.816	800	1600	Single
724.818	800	1800	Single
724.811	800	1800	Double
724.820	800	2000	Single
724.821	800	2000	Double
724.822	800	2200	Single
GLAZED DOOR			
725.818	800	1800	Single
725.820	800	2000	Single

PLINTH CORNER PART



Relevance : TEOS, NEO Modular, NEO Monoblock,
NEO HC Modular, NEO HC Monoblock

Related size : PLINTH HEIGHT

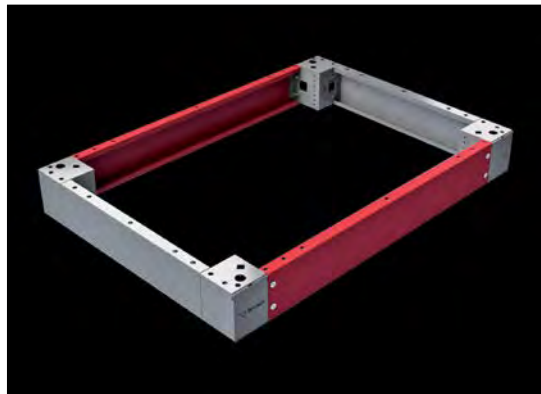
Material : Corner part : 2,00 mm galvanized steel +
RAL 7012 powder-coating
Plastic Panel : RAL 7012 ABS Plastic

Supply Includes : 4 pcs 100 mm or 200 mm high plinth corner part,
4 pcs plastic panel and mounting parts

NOTE : Please see page 154-155 for plinth accessories.

PRODUCT CODE	TEOS PLINTH HEIGHT (mm)
708.100	100
708.200	200

PLINTH FRONT COVERS



Relevance : TEOS, NEO Modular, NEO Monoblock
NEO HC Modular, NEO HC Monoblock

Related size : ENCLOSURE WIDHT

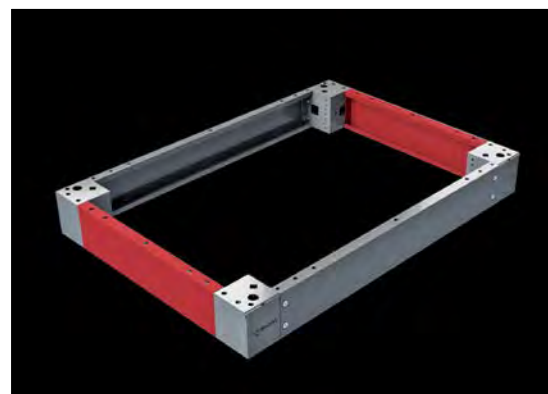
Material : 100 mm front plinth part:
1,50 mm galvanized steel + RAL 7012 powder-coating

Supply Includes : 2 pcs 100 mm front plinth part and
mounting parts

REQUIRED : 2 sets of front plinth panel group
for 200 mm height plinths

PRODUCT CODE	ENCLOSURE WIDHT (mm)
709.140	400
709.160	600
709.170	700
709.180	800
709.100	1000
709.120	1200

PLINTH SIDE COVERS



Relevance : TEOS, NEO Modular, NEO Monoblock
NEO HC Modular, NEO HC Monoblock

Related size : ENCLOSURE WIDHT

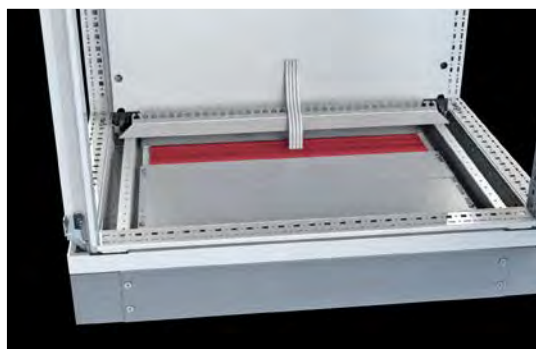
Material : 100 mm side plinth part:
1,50 mm galvanized steel + RAL 7012 powder-coating

Supply Includes : 2 pcs 100 mm front plinth part and
mounting parts

REQUIRED : 2 sets of front plinth panel group
for 200mm height plinths

PRODUCT CODE	ENCLOSURE WIDHT (mm)
710.140	400
710.150	500
710.160	600
710.180	800
710.100	1000

BRUSHED CABLE ENTRY SYSTEM



Relevance : TEOS, NEO Modular, NEO HC Modular

Related size : ENCLOSURE WIDTH

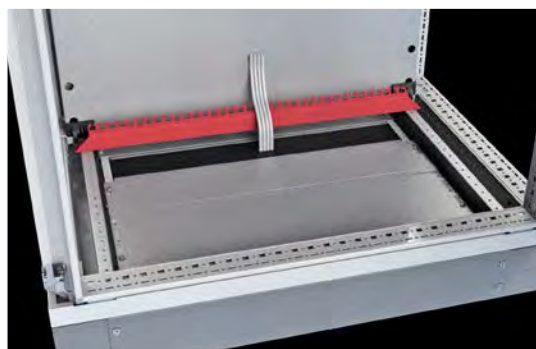
Material : ABS plastic

Supply Includes : Strip brush, combination profile and parts

NOTE : 2 accessories per (1000mm and 1200mm wide) brush entry system

PRODUCT CODE	ENCLOSURE WIDTH (mm)
923.401	400
923.601	600
923.701	700
923.801	800
923.101	1000*
923.121	1200*

CABLE CLAMP RAIL (CLIP-ON)



Relevance : TEOS, NEO Modular, NEO Monoblock, NEO HC Modular, NEO HC Monoblock

Related size : ENCLOSURE WIDTH

Material : 2,00 mm mild steel + zinc-plating

Supply Includes : Cable bracket combination profile and combination parts.

PRODUCT CODE	ENCLOSURE WIDTH (mm)
998.400	400
998.600	600
998.700	700
998.800	800
998.100	1000
998.120	1200

MOUNTING RAIL and MOUNTING PLATE

PLUG-IN RAIL BRACKET

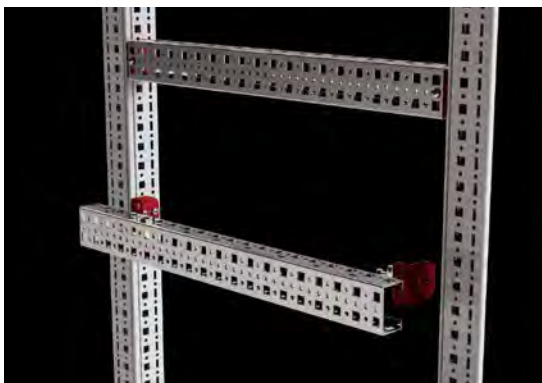


Relevance : TEOS, NEO Modular, NEO Monoblock, NEO HC Modular, NEO HC Monoblock,

Material : 2 mm mild steel + zinc coated

Product Code : **944.421** (12 pcs.) (Screws included)
944.420 (100 pcs.) (Screws included)

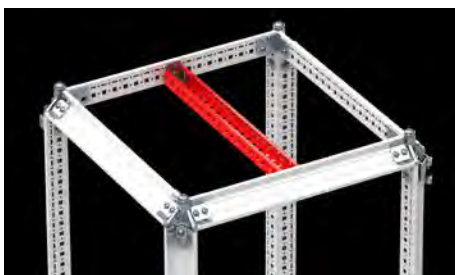
- Thanks to this bracket, the enclosure body can be mounted, and the scissile rail can be mounted on the enclosure body. It holds tightly on the enclosure body thanks to its fitting hook. The low relief on the front surface allows for a strong profile hold on the bracket and removes the weight off the bolt.
- Recommended for profile mounting on the body.
- Moves on the profile or body at 25,00mm long steps.



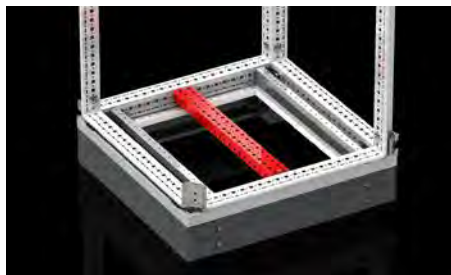
Frame width and depth combination



Vertical frame combination



Frame top combination



Frame bottom combination



Vertical rail combination



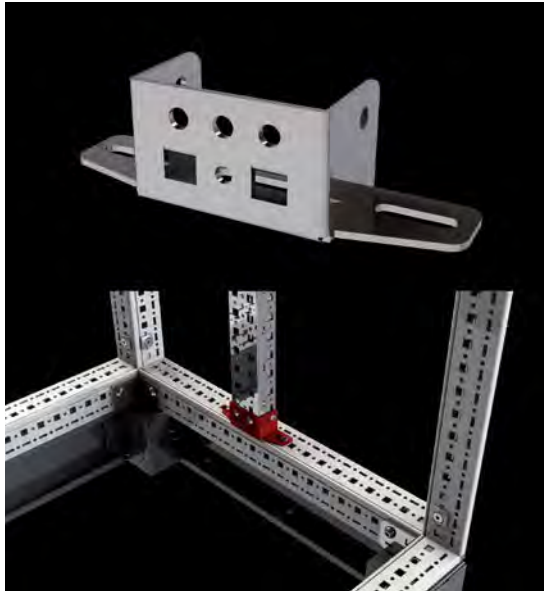
Rail width combination (horizontal)



Mounting plate combination

MOUNTING RAIL and MOUNTING PLATE

ADJUSTABLE RAIL BRACKET (TYPE T)



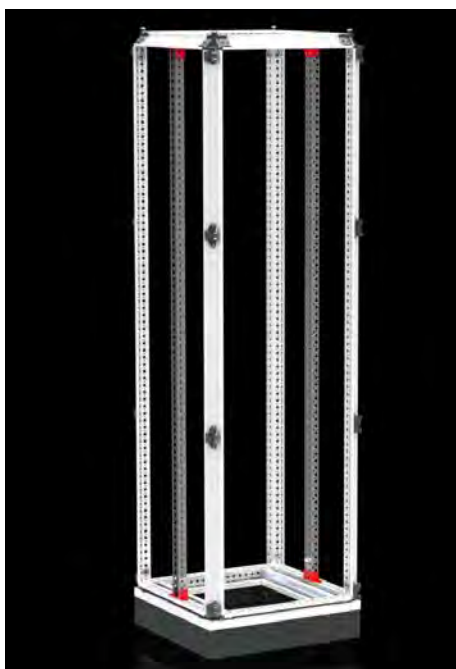
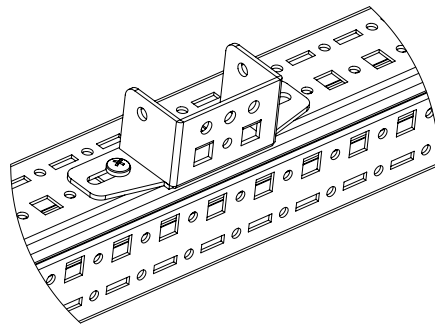
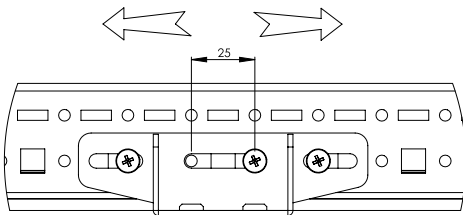
Relevance : TEOS, NEO Modular, NEO Monoblock, NEO HC Modular, NEO HC Monoblock,

Material : 2 mm mild steel + zinc coated

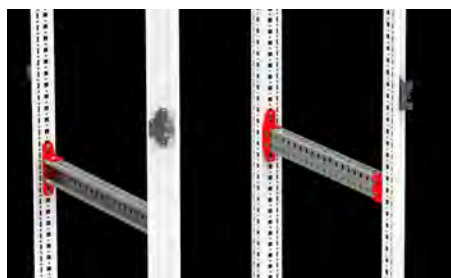
Product Code : 944.433 (4 pcs) (screws included)

- Used for mounting the scissile rail on the enclosure body.
- Its slot perforations provides the profile with a 25mm axis movement.
- The rail is able to reciprocate in vertical position. Thanks to this, the equipments mounted on the rail can be aligned to the inner panel position.
- The busbar support is used to fix the top part on the body when the rail is depth-combined on the body. See page 213
- The bulge placed on the combination part of the bracket and the rail holds the rail weight and takes the load off the screw.

25mm movement ability on the axis



Vertical combination on the frame



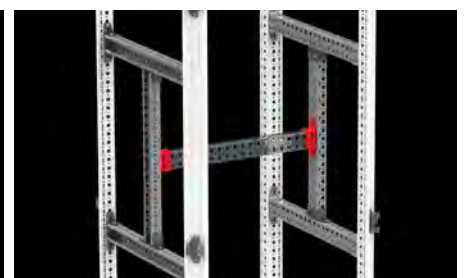
Depth combination on the frame



Combination on the top frame



Vertical combination on the rail



Width combination on the rail (vertical)

SHELF and INTERIOR PARTS

LAMP RAIL



Relevance : TEOS, NEO Modular, NEO Monoblock, NEO HC Modular, NEO HC Monoblock

Related size : ENCLOSURE WIDTH

Material : 2,00 mm mild steel + zinc-coated

Supply Includes : 1 pcs lamp bracket rail and assembling parts

PRODUCT CODE	ENCLOSURE WIDTH (mm)
903.204	400
903.206	600
903.207	700
903.208	800
903.210	1000
903.212	1200

SWITCH BRACKET



Relevance : TEOS, NEO Modular, NEO Monoblock, NEO HC Modular, NEO HC Monoblock

Material : 2,00 mm mild steel + zinc-coated

Supply Includes : 1 pcs switch bracket and assembling parts

Product Code : 903.300



COMFORT LOCKING HANDLE & INSERTS

Relevance : TEOS,

Product Code :

COMFORT Locking Handle with 5333 insert : 950.103

Insert Doublebit 5,00mm : 951.250

Insert Triangle 9,00mm : 951.252

Insert Square 8,00mm : 951.251

NECESSARY : In the case of selecting of the other lock inserts (Doublebit , Triangle and Square), the corresponding key must also be selected.



COMFORT LOCKING HANDLE & INSERTS

Relevance : NEO Modular, NEO Mb

Reference no :

COMFORT Locking Handle with 5333 insert : 950.117

COMFORT Locking Handle (PAD LOCK) with 5333 insert : 951.214

Insert Doublebit 5,00mm : 950.110

Insert Triangle 9,00mm : 950.115

Insert Square 8,00mm : 950.116

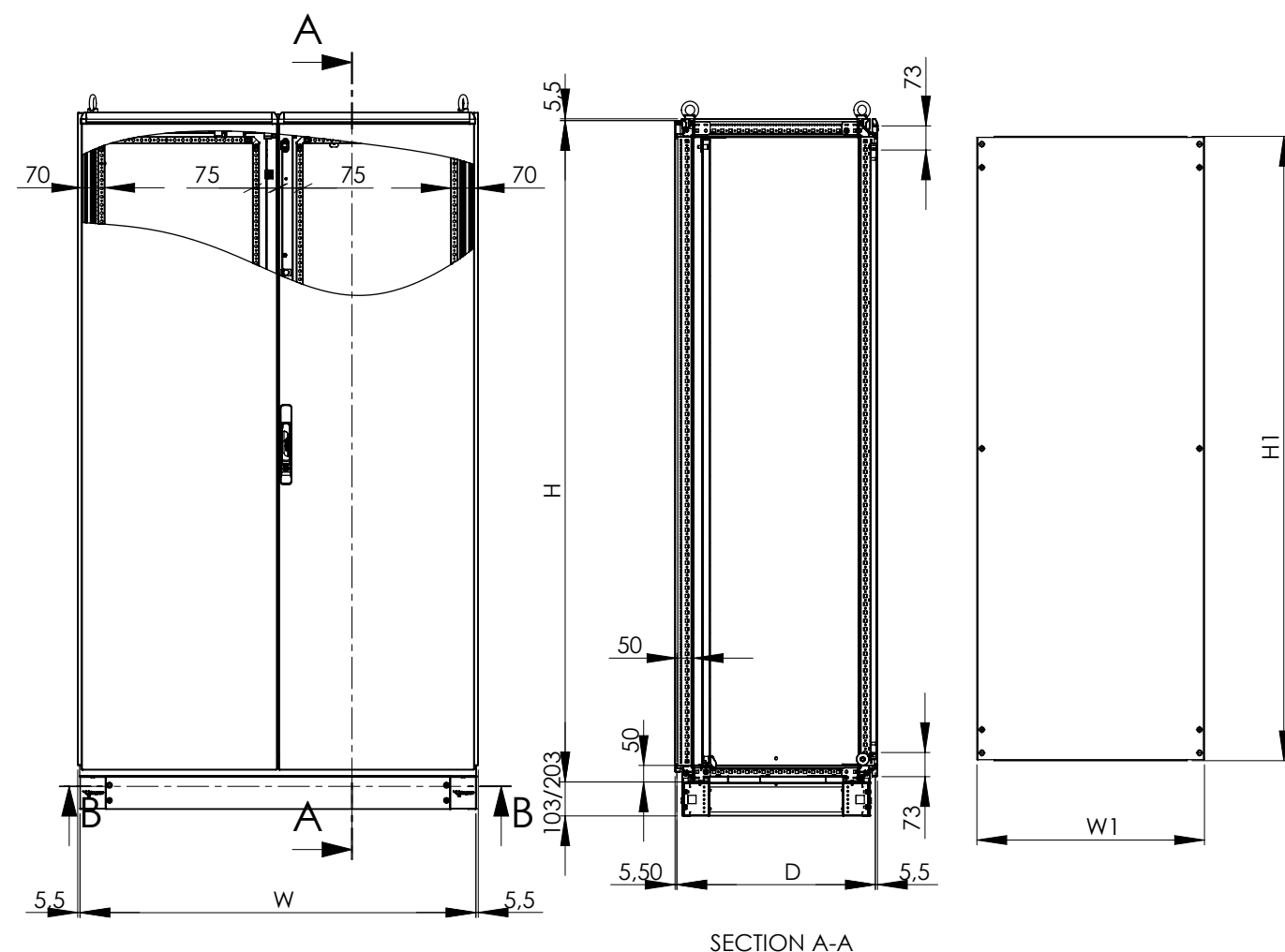
NECESSARY : In the case of selecting of the other lock inserts (Doublebit , Triangle and Square), the corresponding key must also be selected.

KEYS



Relevance : All Lock Systems
Material : Zamak + Zinc-Coating
Supply : Key 1 pcs
Includes : Eurokey 2 pcs

PRODUCT CODE	MODEL
952.101	5 mm Double-bit
952.102	8 mm Square
952.103	9 mm Triangular
952.300	Eurokey (5333)



SECTION A-A

SECTION B-B

ENCLOSURE WIDTH	W	W1	W2	W3
400	400	-	320	151
500	500	388	420	251
600	600	488	520	351
700	700	588	620	451
800	800	688	720	551
1000	1000	888	920	444,5x2
1200	1200	1088	1120	544,5x2

ENCLOSURE DEPTH	D	D1	D2
400	400	320	203
500	500	420	303
600	600	520	403
700	700	620	503
800	800	720	603

ENCLOSURE HEIGHT	H	H1
1200	1200	1088
1600	1600	1488
1800	1800	1688
2000	2000	1888
2200	2200	2088



www.tekpan.com

