

Digital Biological Microscope

Features:

- * The integration of structure design, to save space.
- * Valid mouldproof design, it can be used under the high temperature and high humidity environment.



Technical Parameters:

Model		DM-125	DM-300M
Optical System	Infinite Optical System	/	√
	Finite Optical System	√	/
Viewing Head	Seidentopf Binocular Viewing Head Inclined at 30°, Interpupillary 47-78mm	√	/
	Seidentopf Trinocular Viewing Head Inclined at 30°, Interpupillary 47-78mm	●	/
	Seidentopf Binocular Viewing Head, 30° Inclined, Interpupillary 48-75mm	/	√
	Seidentopf Trinocular Viewing Head, 30° Inclined, Interpupillary 48-75mm	/	●
	MD101Microscope Camera with HD Monitor, 5M pixels, Colour CMOS	●	●
Eyepiece	Wide Field Eyepiece WF 10×/18	√	√
	Extra Wide Field Eyepiece EW10×/20 with Diopter Adjustment	/	●
Objective	Achromatic Objective 4×,10×,40×,100×	√	/
	Infinite Semi-plan Achromatic Objectives 4×,10×,40×,100×	/	√
	Infinite Plan Achromatic Objectives 4×,10×,40×,100×	/	●
Nosepiece	Backward Quadruple Nosepiece	√	/
	Quadruple Nosepiece	/	√
Stage	Double Layers Mechanical Stage 140mm×140mm/ 75mm×50mm	√	√
Condenser	NA1.25 Abbe Condenser	√	/
	Sliding-in Centerable condenser NA1.25	/	√
	Dark Field Condenser (Dry, Oil)	●	/
Focusing System	Coaxial Coarse and Fine Adjustment, Fine Division 0.002mm, Coarse Stroke 37.7mm per Rotation, Fine Stroke 0.2mm per Rotation, Moving Range 20mm	/	√
	Coaxial Coarse and Fine Adjustment, Fine Division 0.002mm, Moving Range 25mm	√	/
Illumination	6V/ 20W Halogen Lamp, Brightness Adjustable	●	●
	S-LED Illumination, Brightness Adjustable	√	√
Accessories	Phase Contrast Kit, Fluorescent Attachment, Polarization Set	●	●
Power Supply	AC 110~220V, 50/60HZ	√	√
Packing Size(mm)	380*270*470mm (DM-125 Main body) 350*350*640(DM-300M)	√	√
Gross Weight(kg)	8.5(DM-125 Main body); 12(DM-300M)	√	√

Note: √ Standard Outfit, ● Optional, \ Without this feature Trinocular microscope can be installed camera and screen.

Build-in Camera Biological Microscope



Technical Parameters:

Model		BMB-117M	BMB-300M		
Viewing Head	Compensation Free Binocular Head, Inclined at 30°, Interpupillary Distance 48-75mm	√	√		
	Camera System	Valid Pixel	1280*1024(1.3M Pixel)	√	/
			1600*1200(2.0M Pixel)	●	/
			2048*1036(3.0M Pixel)	/	√
			2052*1944(5.0M Pixel)	/	●
		Output Mode	USB2.0	√	√
		Operation System	WINDOWS7/8 2000 / XP/ VISTA	√	√
Software	ScopelImage 9.0	√	√		
Range of Viewing Field	>90%(BMB-117M); 18mm(BMB-300M)	√	√		
Eyepiece	WF10×/18	√	√		
	P16×/11	●	/		
	Extra wide filed eyepiece EW10×/20 with diopter adjustment	/	●		
Objective	Achromatic Objective 4×, 10×, 40×, 100×	√	/		
	Infinite plan Achromatic Objective 4×, 10×, 40×, 100×	/	√		
	Infinite Plan Achromatic Phase Objective 10×,20×,40×,100×	/	●		
	Oil Darkfield Objective with Iris Diaphragm 100×(NA0.36-1.25)	/	●		
Nosepiece	Backward Quadruple Nosepiece	√	/		
	Quintuple Nosepiece	/	●		
	Quadruple Nosepiece	/	√		
Stage	Double Layers Mechanical Stage 140*140mm, Moving range 75*50mm	√	√		
Condenser	Abbe NA1.20 with Iris Diaphragm & Fliter	√	/		
	Swing Condenser N.A.0.9/0.25	/	√		
	Turret Phase Contrast Condenser	/	●		
	Dark Field Condenser (Dry)	/	●		
	Dark Field Condenser (Oil)	/	●		
Focusing	Coaxial Coarse & Fine Adjustment System, Range 24mm, Fine Division 0.004mm	√	/		
	Coaxial Coarse & Fine Adjustment System, Range 20mm	/	√		
Illumination	LED 3W, Brightness Adjustable	√	/		
	Halogen Lamp 6V/20W, Brightness Adjustable	●	/		
	S-LED Powerful Illumination	/	√		
Power Supply	AC 110~220V, 50/60HZ	√	√		
Accessories	Phase Contrast Kit	●	●		
	Dark-Field Attachment	●	●		
	Polarization Attachment	●	●		
Package Size	396*262*492(BMB-117M), 334X334X533(BMB-300M)	√	√		
Gross Weight	7.5kg (BMB-117M), 12.5kg (BMB-300M)	√	√		

Note: √ Standard Outfit, ● Optional, \ Without this feature

STAINLESS-STEEL ELECTRIC-HEATING DISTILLING APPARATUS

WD-AD5, WD-AD10, WD-AD20

Performance and characteristic:



- ▶ All of products are made from stainless steel.
- ▶ Have two container, and firm reasonable.
- ▶ Condenser is made of seamless stainless-steel pipes and so with very good cooling effects & great capacity of water produce.
- ▶ When lack water, will auto stop heating, when the return water reach the normal level, then continue heating.
- ▶ Composed of first distilling, second distilling water and heating two control system.
- ▶ Immerge electric heating tube made from copper, heat efficiency is better.

Main Technical Data:

Model	Electric Supply	Power	Water discharge	Product size (Wooden) cm
WD-AD5	380V/50Hz	10kW	≥5L/h	42X72X86
WD-AD10	380V/50Hz	17kW	≥10L/h	48X78X100
WD-AD20	380V/50Hz	32kW	≥20L/h	56X87X120

Incubator

CO₂ Incubator

Features:

- * Water tank for humidity in the chamber.
- * Air jacket: equipped with UV Lamp for sterilizing;
Water jacket: equipped with HEPA filter.
- * Equipped with USB port and LCD touch screen, the incubator can save data in real time.
- * High quality CO₂ gas filter ensures the inside gas quality.
- * SMC brand gas circuit valves ensure more stable CO₂ concentration and less consumption of CO₂ gas.
- * Microcomputer controller, LCD displays temperature curve, CO₂ concentration, run-time and timing.
- * High quality infrared sensor for accurate CO₂ concentration.
- * The working chamber adopts round angle structure, easy to clean.



LCD touch screen



CO₂ gas filter



HEPA filter (for water jacket)

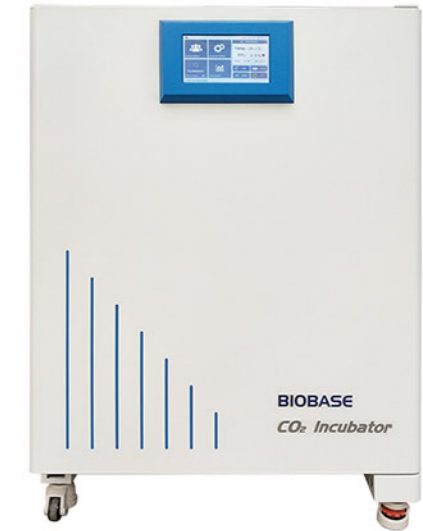
Technical Parameters:

Model	BJPX-C50		BJPX-C80		BJPX-C160	
Capacity	50L		80L		160L	
Heating	Air jacket	Air jacket	Water jacket	Air jacket	Water jacket	
Temp. Range	RT+5~60°C					
Control Type	Microcomputer controller					
Temp. Fluctuation	≤ ±0.2°C (at 37°C)					
Temp. Uniformity	≤ ±0.3°C (at 37°C)					
Time Setting	999h or continuous					
Alarm	Audible and visual alarm; over-temperature alarm; CO ₂ concentration alarm.					
Shelves	2 pcs/adjustable					
Material	External cold-rolled steel with painting; internal stainless steel					
Door	With inner door and external door					
CO ₂ Range	Infrared sensor, range 0~20%					
CO ₂ Control Resolution	0.1%					
Humidification Type	Water tank for natural evaporation					
Sterilization Type	UV lamp					
Ambient Temp. & Humidity	18~30°C, suggest 25±2°C; relative humidity ≤80%					
Caster	Footmaster caster					
Consumption	350W	600W	875W	650W	1000W	
Power Supply	AC220V±10%, 50/60Hz(Standard); AC110±10%, 60Hz(Optional)					
Internal Size (W*D*H)mm	337*338*443	377*410*524	428*412*522	477*473*711	528*512*722	
External Size(W*D*H)mm	500*527*821	600*596*921	647*593*1070	700*666*1101	747*694*1260	
Packing Size (W*D*H)mm	655*685*970	735*735*1070	725*780*1225	795*835*1250	824*877*1425	
Gross Weight(kg)	68	83	108	108	145	

CO₂ Incubator

Features:

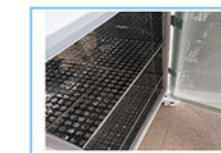
- * Air jacket: with 90°C steam sterilization function.
- * Equipped with USB port and LCD touch screen, the incubator can save data in real time.
- * High quality infrared sensor for accurate CO₂ concentration.
- * The working chamber adopts round angle structure, easy to clean.
- * High quality CO₂ gas filter ensures the inside air quality.
- * SMC brand gas circuit valves ensure more stable CO₂ concentration and less consumption of CO₂ gas.
- * Push-pull shelves with holes ensures better temperature uniformity.
- * Microcomputer controller, LCD displays temperature curve, CO₂ concentration, run-time and timing.
- * Three Liters water reservoir in the bottom chamber ensures high humidity.



LCD touch screen



USB port



Push-pull shelves with holes

Technical Parameters:

Model	BJPX-C50II	BJPX-C80II	BJPX-C160II
Capacity	50L	80L	160L
Heating	Air jacket		
Temp. Range	RT+5~60°C		
Control Type	Temperature and humidity transmitter		
Temp. Fluctuation	≤ ±0.2°C(at 37°C)		
Temp. Uniformity	≤ ±0.3°C (at 37°C)		
Time Setting	999h or continuous		
Alarm	Audible and visual alarm; over-temperature alarm; CO ₂ concentration alarm.		
Shelves	2 pcs/adjustable		
Material	External cold-rolled steel with painting; internal stainless steel		
Door	With inner door and external door		
CO ₂ Range	Infrared sensor, range 0~20%;		
CO ₂ Control Resolution	0.1%		
Humidification Type	Water reservoir in the bottom chamber ensures high humidity(90%≤relative humidity≤99%)		
Sterilization Type	With 90°C moist heat decontamination function (95%≤humidity ≤99%RH)		
Ambient Temp. & Humidity	18~30°C, suggest 25±2°C; relative humidity ≤80%		
Caster	Footmaster caster		
Consumption	300W	650W	700W
Power Supply	AC220V±10%, 50/60Hz(Standard); AC110±10%, 60Hz(Optional)		
Internal Size (W*D*H)mm	308*392*442	368*452*517	468*552*648
External Size(W*D*H)mm	551*713*765	611*773*841	711*853*991
Packing Size (W*D*H)mm	681*843*840	705*867*978	805*967*1128
Gross Weight(kg)	85	93	120

Bacterial Colony Counter

Application:

Widely used for bacilli inspection of food, drink, medicine, biological, make-up, health products, water for drink, domestic sewage, and industrial water.

Features:

- * CMOS integrated circuit and LED digital display.
- * The special probe counts sensitively and accurately.
- * It is composed by counter, probe and count pond, etc.
- * The magnification is variable by adjusting the flexional arm.



Technical Parameters:

Model	BC-50
Phonetic Counting	No
Amplification	5X, 10X
Counter Range	Standard: 0 ~ 999; Optional: 0~9999
Suitable Petri Dishes	Φ50-150mm
Character Height	13mm
Lamp Power	16W
Power Supply	AC220V, 50/60Hz
External Size(W*D*H)	270*200*70mm
Package Size(W*D*H)	370*270*330mm
Net Weight	1.7kg
Gross Weight	3kg

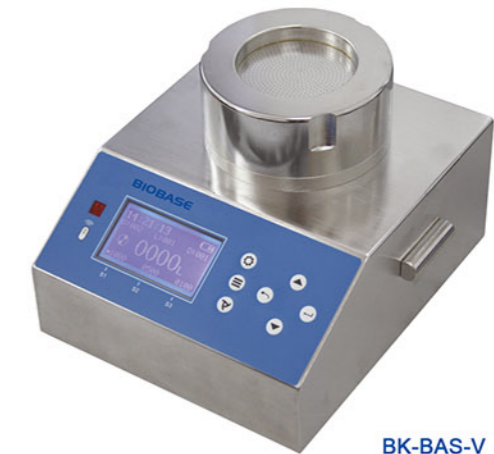
Biological Air Sampler

Application:

It is designed according to the principle of multi jet holes particle impact and isokinetic sampling. And it gets the consistence of animalcule more accurately. It is an ideal air biological sampler for medicine plant, hospital, biological products, food machining, public place, etc.



BK-BAS-IV



BK-BAS-V

Features:

- * Sampling hole has many small holes to reduce particles superposition and reduce error of animalcule count.
- * Programmable, sampling quantity can be set from 0.01 to 9.0m³.
- * LCD screen displays sampling quantity, sampling time, etc.
- * Sampling time can be set automatically.
- * Up to 256 samples data storage of sampling time, sampling volume and other parameters.
- * Easy to change petri dish, just only take down sampling hole to change petri dish. (Diameter: Φ90*15mm)

Technical Parameters:

Model	BK-BAS-IV	BK-BAS-V
Sampling Volume	100L/min	
Flow Velocity of	0.4m/s	0.38m/s
Sampling Holes	Basically the same as the clean room(Isokinetic sampling)	
Material	Aviation aluminum	SUS304 stainless steel
Structure	Microprocessor control, low noise pump sampling	
Rechargeable Battery	DC7.4V/6800mAh	DC14.8V/5000mAh
Operating Time on Battery	6~8h	
Power Supply	AC110/220V±10%, 50/60Hz	
External Size(W*D*H)	120*195*300mm	235*220*180mm
Package Size(W*D*H)	190*380*420mm	400*430*240mm
Net Weight	2.5kg	4.8kg
Gross Weight	6kg	8.5kg

Digital Microscope



Technical Parameters:

	Specification	Model			
		BXTV-1	BXTV-1A	BXTV-1B	BXM-1B
Viewing Head	Sliding Trinocular Head Inclined at 45°	√	√		
	Compensation Free Trinocular Head inclined at 30°			√	
	10" LCD				√
Nosepiece	Ball Beating Quadruple Nosepiece	√	√	√	√
Eyepiece	WF10X/18mm	√	√	√	√
Objective	Achromatic 4X, 10X, 40X(S)100X(S, O)	√	√		√
	Plan Achromatic 4X, 10X, 40X(S)100X(S, O)			√	Optional
Stage	Double Layer Mechanical Stage 135*140mm	√	√	√	√
Condenser	ABBE NA1.25 condenser with Iris Diaphragm & filter, rack&pinion adjustable	√	√	√	√
Illumination	Build-in Illumination, Halogen lamp 6V/20W, Power supply 90-230V	√	√	√	√
Power Supply	AC110/220V±10%, 50/60Hz	√	√	√	√
Package	Cartoon with foam	√	√	√	√
Package Size	250*360*460mm	√	√	√	√
Gross Weight	8kg	√	√	√	√

Image Sensor	1/3 SONY CCD	Video Output	BNC 1.0VP-P.75
Signal System	PAL/NTSC	Backlight Compensation	OFF/ON
Scanning Frequency	Horizontal: 15.62KHz; Vertical: 50Hz	Electronic Shuttle	AUTO IRIS EE
Horizontal Resolution	480TV/520TV	Camera Interface	CS
Min Illumination	F1.2 0.5LUX; 0.01 LUX	Balance	Auto
Gain Control	Auto	Power	DC 12V
48S/N Ratio	50dB AGC		

Note: 110V/220V for LED lamp, 220V only for Halogen lamp

Optional: 2.0, 3.0 or 5.0 Megapixel, CMOS electronic eyepiece(only for Trinocular microscope)

Stereo Zoom Microscope



Technical Parameters:

Model	Specifications	SZM-45	SZM-45T
Viewing Head	Binocular view head inclined at 60°	√	
	Trinocular view head inclined at 45°		√
	Digital view head inclined at 45°		√
Eyepiece	High point wide field adjustable eyepiece WF10X22mm	√	√
Zoom Objective	0.67X--4.5X	√	√
Zoom Ratio	6.7:1	√	√
Auxiliary Objective	0.5X/177mm, 1.5X/47mm, 2X/26mm	√	√
Working Distance	115mm	√	√
Focusing Bracket	Focusing frame and adjustment knob	√	√
Interpupillary Distance	55-75mm/52-75mm	√	√
Up Illumination	LED lamp	√	√
Down Illumination	LED lamp	√	√
Power Supply	AC110/220V±10%, 50/60Hz	√	√
Package	Cartoon with foam	√	√
Package Size	mm	500*260*370	
Gross Weight	kg	8	

Model	ST-20	ST-40	ST-60
Illumination	Natural light Binocular	Tranilluminator/inclined light	Natural light
View Head And Body	Straight Head	Inclined viewing Up-rotatable body	Inclined viewing Body 360°rotatable
Objective	2X	2X&4X, 90°rotated	2X&4X, 360°rotated
Working Distance	80mm	57mm	100mm
Eyepiece	WF10X/20		
Power Supply	/	AC110/220V±10%, 50/60Hz	
Package Size	300*200*150mm	360*170*290mm	400*250*360mm
Gross Weight	3kg	6kg	8kg

Note: 110V/220V for LED lamp, 220V only for Halogen lamp

Optional: SZM-45, SZM-45T: 2.0, 3.0 or 5.0 Megapixel, CMOS electronic eyepiece(only for Trinocular microscope) ;

ST-20, ST-40, ST-60: Fluorescent lamp

Automatic Microtome

Introduction:

Microtome is used for sectioning thin and uniform tissue slices. The BK-2228 Microtome can section slices between 0 and 100µm and and trimmings between 0 and 600µm with a minimum adjustable index value of 0.25µm, which enables fast and accurate slicing operations. Equipped with a lengthening blade adapter and tool post to protect the safety of the operator and enable better tool retracting.



Features:

- * Precision cross-roller guide, equipped with stainless steel holder, to ensure long-lasting operation of the equipment.
- * Equipped with multi-angle adjustment device and embedding chuck.
- * With sectioning/trimming, sectioning counting, retraction display(retraction range, feed travel of small hand wheel, feed direction of hand wheel) function.
- * Magnetic removable waste chute, easy to clean.
- * Two-piece storage board, which can place blade embedding box and other related disposable items.
- * Large hand wheel double lock, and can be single-locked at any point, also double-locked at the highest point and any point, to ensure the safe exchange of knives and samples.

Technical Parameters:

Model	BK-2238
Sectioning Thickness Range	0~100µm
Trimming Thickness Range	0~600µm
Mini. Sectioning Thickness	0.25µm
Precision	±5%
Velocity of small hand wheel	100~1000µm,adjustable
Max Specimen Size	50×70(mm)
Specimen Stroke	Horizontal: 30mm, vertical: 72mm
Tool Holder Stroke	The maximum movement of the tool holder base is 60mm, and the maximum left and right movement of the tool holder is 20mm.
Sample Adjustment Direction	Horizontal 8° Vertical 8° Rotation 360°
Power Supply	AC110~220V, 50/60Hz
Power	100W
External Size(L*W*H)	605x465x340(mm)
Net Weight	35kg
Packing Size(L*W*H)	665*525*400mm
Gross Weight	45kg

Fluorescence Biological Microscope



XY-1

Technical Parameters:

Model	XY-1/XY-2
Viewing Head	Binocular head (XY-1), Trinocular head (XY-2)
Fluorescent Straight Illumination	B(Blue) or G(Green) exciting light filter system, and O ordinary light system. 100W HBO Super high-pressed spherical mercury lamp
Protection Screen	Screen to resist the UV
Power	AC input 220V
Connecting Wire	With 2 connectors
Fluorescent Free Objective	10X, 20X, 40X(S), 100X(S, Oil)
Immersion Oil	Fluorescent free oil
Power Supply	AC110/220V±10%, 50/60Hz
Package Size	440*340*220mm (XY-1)/460*350*250mm (XY-2)
Gross Weight	17kg

Note: 110V/220V for LED lamp

Optional: 6.3 or 20 Megapixel, COMOS electronic eyepiece, Ultraviolet, Violet exciting light filter system and ordinary light system. Auxiliary exciting filter EX450-490.

Polarizing Biological Microscope



BMP-107B

Features:

With the features of easy operation, complete functions and economy, it is an ideal instrument in geology, petroleum, coal, chemicals and physic fields. It is also widely used in academic demonstration and scientific research.

Technical Parameters:

Model		BMP-107B	BMP-107T
Viewing Head	Sliding binocular head at 45°, 360° rotatable	√	\
	Sliding trinocular head at 45°, 360° rotatable	\	√
Eyepiece	Eyepiece WF10×/18 with scale of crosshair	√	√
	Eyepiece WF10×/18	√	√
Objective	Strain free achromatic objective 4×, 10×, 40×	√	√
Nosepiece	Toward quadruple nosepiece, center adjustable	√	√
Analyzer	Rotatable analyzer with gradation 0°~90°	√	√
Bertrand Lens	Bertrand lens, sliding in/ out of optical path	√	√
Optical Compensator	λ slip(first class red)	√	√
	1/ 4λ slip	√	√
	Quartz wedge	√	√
Revolving	Diameter Φ160mm, graduated in1° increments,	√	√
Round Stage	Minimum resolution 6' when using vernier scale	√	√
Condenser	Abbe condenser with Iris diaphragm & filter	√	√
Focusing	Coaxial coarse & fine adjustment, range 28mm, fine division 0.002mm	√	√
Polarizer	Sliding in/out of optical path, located on the top of collector	√	√
Illumination	6V/ 20W halogen lamp, brightness adjustable	√	√
Power Supply	AC 110~220V, 50/60HZ	√	√
Package Size	327*273*425mm	√	√
Gross Weight	7.5kg	√	√

Note: √ Standard Outfit, ● Optional, \ without this feature Trinocular microscope can be installed camera and screen.

-25°C Freezer



268L

328L

270L/350L

Technical Parameters

Model	BDF-25V268	BDF-25V328	BDF-25V270	BDF-25V350
External Size(W*D*H) mm	673*676*1630	673*676*1886	690*744*1631	690*744*1885
Capacity	268L	328L	270L	350L
Type	Vertical			
Temp. Range	-10°C~-25°C			
Temp. Accuracy	0.1°C			
Control System	Microprocessor Control & LED Display			
Alarm	High and low temperature; sensor failure; Door ajar alarm; Thermostat alarm		High or low temperature alarm, power outage alarm, Thermostat alarm, Door switch alarm	
Refrigeration Type	Direct Refrigeration			
Refrigerant	R290, CFC free			
Compressor	International famous compressor			
Condenser & Evaporator	Wire tube condenser; Coil type evaporator			
Construction	Structure	Unibody Design & Mono-assembly foaming (Rigid polyurethane insulation material)		
	Internal Material	Spraying steel plate		SUS304
	External Material	Spraying steel plate		Cold-rolled steel coated with bacterial powder
Shelve	3pcs	4pcs	3pcs	4pcs
Consumption	180W	180W	290W	305W
Power Supply	AC220V±10%, 50/60Hz; 110V±10%, 60Hz		220V±10%, 50Hz	
Package Size(W*D*H) mm	760*760*1750	750*760*2030	810*860*1820	810*860*2100
Gross Weight	114kg	125kg	155kg	170kg

-25°C Freezer



100L

936L

Technical Parameters

Model	BDF-25V100	BDF-25V936	
External Size(W*D*H) mm	540*540*880	1304*1000*2017	
Internal Size(W*D*H) mm	410*410*670	1000*700*1335	
Capacity	100L	936L	
Type	Vertical		
Temp. Range	-10°C~-25°C		
Temp. Accuracy	0.1°C		
Control System	Microprocessor control, LED Digital Display		
Audible and Visual Alarm	High and low temperature alarm, sensor failure alarm, power failure alarm, door open alarm, etc.	High and low temperature alarm, sensor failure alarm, thermostat failure alarm, power failure alarm, door open alarm, ambient temperature alarm, condenser failure alarm, filter inspection alarm, abnormal voltage alarm, low battery alarm.	
Alarm Method	Sound beeps and lights flash		
Refrigeration type	Direct refrigeration		
Refrigerant	R600a	R404A	
Construction	Foam Layer Thickness	65mm	150mm
	Internal Material	HIPS	304 stainless steel
	External Material	Sprayed steel plate	
Consumption	150W	1000W	
Power Supply	AC220V±10%, 50/60Hz	AC110V/220V±10%, 50/60Hz	
Package Size (W*D*H) mm	610*625*950	1360*1135*2170	
Gross Weight	43kg	421kg	

Vertical Autoclave



Application Range:

There are 5 fixed programs and 2 DIY programs according to different sterilization objects such as dressings, equipment, tools, rubber, liquid, culture medium, waste, etc.

Safety Features:

- * **Over pressure:** safety valve can automatically open to release pressure.
- * **Over temperature:** the system will power off automatically.
- * **Door sensor:** Sensor at door closing position, to check the door status. If door is open, operation will stop.
- * **Anti-dry out function:** If water level is too low, system will power off and error code displays on screen.
- * **Over current:** over voltage or electric leakage protection apparatus-air switch.
- * **Door cover:** The door is covered with safety shell made of thermal insulation material, which can protect operator from burning by heat and looks nice.

Technical Features:

- * Water inlet filter to keep high water quality (except BKQ-B150/200II).
- * Optional printer for recording sterilization data.
- * LED screen displays all steps of full process as well as error codes.
- * Independent quick service window, easy for repairing and maintenance.
- * Automatic selecting quick or low exhaust to avoid sterilization liquid overflowing.
- * Sterilization programs for dressings, equipment, rubber, culture medium, waste, etc.
- * Hand wheel type of quick-open door structure, self-expandable sealing ring, easy operating and safe.
- * Complete process of filling water, dynamic pulse exhaust, heating, sterilizing and draining runs automatically.
- * Adopting certain temperature (98~102°C) exhaust method and dynamic pulse exhaust method to completely empty the cold air inside chamber for ensuring steam saturability.
- * Inner stainless steel water tank for water and steam to circulate inside. Steam does not exhaust during sterilization, so as to keep the outside clean and dry (except BKQ-B150/200II).
- * Drying function (except BKQ-B150/200II).
- * Optional stainless steel bucket (except BKQ-B150/200II).
- * Standard 1 pcs stainless steel tray(except BKQ-B150/200II).

Technical Parameters:

Model	BKQ-B50II	BKQ-B75II	BKQ-B100II	BKQ-B120II	BKQ-B150(II)	BKQ-B200(II)
Capacity	50L	75L	100L	120L	150L	200L
Chamber Size(mm)	φ386*514	φ386*695	φ386*875	φ386*1055	φ500*760	φ500*1000
Chamber Material	S30408					
Designed Pressure	0.28Mpa			0.217Mpa		
Designed Temp	134°C			138°C		
Working Pressure	0.23MPa			0.217MPa		
Working Temp.	105~136°C			50~134°C		
Temp. Display Accuracy	0.1°C					
Timing Range	0~999min				0~99h	
Dynamic Pulse Exhaust Times	0~9 times				/	
Dynamic Pulse Exhaust Temp.	105~136°C					
Temp. Holding Range	45~60°C (programmable)				50~100°C (programmable)	
Consumption	4.4kW	4.7kW	5.2kW	5.2kW	6kW	
Power Supply	AC110/220V±10%, 50/60Hz				380V, 50Hz/220V, 50/60Hz	
Standard SS Basket	1 pcs	2 pcs	2 pcs	3 pcs	3 pcs	4 pcs
External Size(W*D*H)mm	640*550*980	640*550*1080	640*550*1280	640*550*1380	650*650*1400	650*650*1700
Package Size(W*D*H)mm	750*745*1100	750*745*1240	750*745*1450	750*745*1540	800*760*1530	800*760*1720
Gross Weight(kg)	102	112	125	140	213	238

Note: It is applicable to the altitude below 3,000m

Neonatal Jaundice Phototherapy Device

Neonatal jaundice is a common disease in newborns. Blue light irradiation is used for reducing the concentration of bilirubin to treat neonatal jaundice. BIOBASE Neonatal Jaundice Phototherapy Device can effectively reduce the concentration of bilirubin in newborns and shorten treatment time. The total irradiance for bilirubin and effective treatment area meet AAP Guidelines for intensive phototherapy devices.

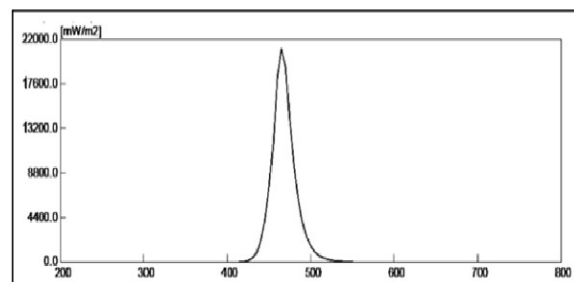


BHZ-001

Features:

- BHZ-001:
1. LED display.
 2. Blue LED as major irradiating light source and white LED for lighting use.
 3. Angle and Height of light box can be adjusted.
 4. Aluminum support pole ,wheels can be locked.
 5. Timer with the accumulative running time and the current working time.
 6. Mode of time: count up and count down.

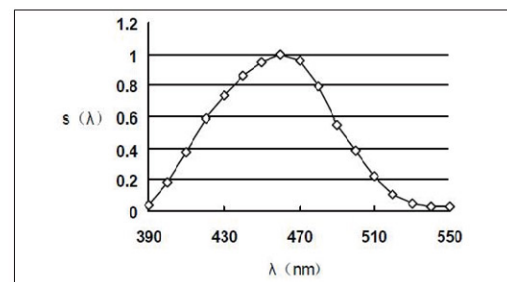
Spectral distribution



BHZ-002 (ABS)

- BHZ-002:
1. LCD display.
 2. High power LED. Blue LED as major irradiating light source and white LED for lighting use.
 3. Timer with the accumulative running time and the current working time.
 4. Mode of time: count up and count down.
 5. The irradiation intensity can be adjusted into high or low levels.
 6. Can be fixed on the top of incubator by the bottom sucker.

Testing device integral Ebi calibration trend



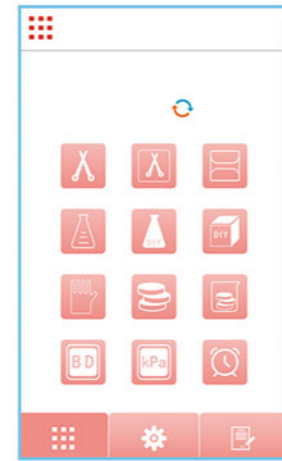
Technical Parameters

Model	BHZ-001(Mobile)	BHZ-002 (Incubator Mounted)
Display	LED	LCD
Dominant Wavelength of Blue Light (nm)	425~475	
LED Lifetime	5000hrs	
Product Service Life	6 years	
Radiation Therapy Distance(mm)	Distance light box 400	Distance light box 450
Phototherapy Effective Surface Area(mm)	300*200	
The Total Irradiance for Maximum Bilirubin on the Effective Surface Area	≤4.0mW /cm2 ±10%	≤2.6mW /cm2 ±10%
The Total Irradiance on the Effective Surface Area	≥1.6mW /cm2	≥1.0mW /cm2
Average Value of the Total Irradiance for Bilirubin	≥2.5mW /cm2	≥1.3mW /cm2
Uniformity of the Total Irradiance for Bilirubin	>0.4	
Noise	≤45dB(A)[Ambient noise ≤35dB(A)]	
Light Box Irradiation Angle Adjustment Range	0~60 ° adjusted up and down	\
Light Box Height Adjustment Range(mm)	1350~1650	\
Display Timer Range	0~9999 hours 59 minutes	
Ambient Air Movement Rate(m/s)	<0.3	
Working Temp.	28~34 °C	
Working Relative Humidity	30%~75%	
Working Atmospheric Pressure	800~1060hPa	
Overvoltage Category	II	
Pollution Grade	2	
Waterproofing Grade	IPX0	
Application Environment Elevation (m)	≤2000	
Power Supply	AC220V/110V±10%, 50Hz/60Hz; 75VA	
Net Weight(kg)	15	1.64
Gross Weight(kg)	30	2.1
External Size(W*D*H) mm	705*620*1350~1600	410*230*80
Packing Size(W*D*H) mm	665*700*1115	315*485*130

The total spectral irradiance Ebi over a wavelength interval of 5nm for the wavelength range between 320nm and 550nm.

320	0.0000000000	380	0.0000000000	440	2.0851640000	500	1.5803700000
325	0.0000000000	385	0.0000000000	445	4.0588730000	505	0.9958963000
330	0.0000000000	390	0.0000000000	450	7.1860800000	510	0.6231434000
335	0.0000000000	395	0.0000000000	455	11.5261200000	515	0.3886996000
340	0.0000000000	400	0.0000000000	460	18.2637400000	520	0.2505039000
345	0.0000000000	405	0.0000000000	465	21.0351500000	525	0.1611249000
350	0.0000000000	410	0.0000000000	470	19.3089700000	530	0.1039433000
355	0.0000000000	415	0.0014880750	475	13.6934800000	535	0.0651738000
360	0.0000000000	420	0.0412178700	480	9.3698260000	540	0.0426970300
365	0.0000000000	425	0.1388389000	485	6.3107570000	545	0.0260784500
370	0.0000000000	430	0.3533474000	490	3.9971590000	550	0.0148105000
375	0.0000000000	435	0.8143584000	495	2.4550760000		

Horizontal Pulse Vacuum Autoclave



Display



Chamber



Door

Introduction:

The pulse vacuum autoclave extracts vacuum and fills steam into the sterilization room for many times to make the sterilization chamber reach a certain vacuum degree, and then fills saturated steam to reach the set pressure and temperature, so as to achieve the purpose of sterilization of the sterilized substance.

Application:

It can be widely used in department of stomatology and ophthalmology, operating room and other medical institutions. It is suitable for all wrapped or unwrapped solid instrument, A-class cavity instrument (dental hand-pieces and endoscopes), implantable instrument, dressing fabric and rubber tubes, etc.

Features:

- * Sterilization data output: standard micro printer, no need for separate external connection.
- * 7-inch color LCD touch screen, which can display information such as temperature, pressure, operating status, fault alarm, cause analysis, and solutions at the same time.
- * Strong vacuum drying system, the vacuum degree can be up to -92kpa, after drying, the residual humidity of device doesn't exceed 0.25%, the residual humidity of dressing doesn't exceed 1%.
- * The air in the chamber is sterile and avoids re-contamination.
- * Adopt quick-release side cover and top cover for easy maintenance and cleaning.
- * Micro-controller programmable control technology.
- * Full protective door cover, effectively prevent burns.
- * The equipment adopt self-expanding sealing ring. sealing performance is more reliable and stable.
- * The closing method adopts a multi-point pressing structure of the radiation rod, safe and reliable.
- * The equipment is connected to the water source without manual replenishment. After the customer chooses the program, the equipment can complete the whole process from water injection to drying without human intervention.
- * After the program is completed, the sound prompts sterilization to be completed.
- * Built-in high speed steam generator, no external steam source, save time and effort.
- * With mobile temperature sensor, can meet the special requirements of the laboratory.
- * Pressure, mechanical and electronic three-layer safety interlock device, with over-temperature protection and over-pressure protection, can eliminate all safety risks.
- * The quick release is the side cover and the top cover, which is convenient for equipment maintenance and cleaning.

Technical Parameters:

Model	BKQ-Z150H	BKQ-Z200H	BKQ-Z300H	BKQ-Z360H
Capacity	150L	200L	300L	360L
Max Designed Pressure	-0.1/0.3MPa			
Working Pressure	0.23MPa			
Working Temp.	105~134°C			
Noise	≤85dB			
Vacuum System	Water circulating vacuum pump			
Chamber Material	S30408			
Power Supply	380V/50Hz (Standard); 380V/60Hz (Optional); 220V/50Hz,220V/60Hz (3-phase, Optional)			
Consumption	20kVA			
External Size(W*D*H)mm	1190*940*1780	1400*940*1780	1570*1170*1980	1570*1170*1980
Chamber Size(mm)	φ500*780	φ500*1020	φ650*980	φ650*1130
Package Size(W*D*H)mm	1385*1110*2080	1585*1110*2080	1755*1330*2270	1755*1330*2270
Gross Weight(kg)	520	600	755	770

Constant-Temperature Incubator

Features:

- * Microcomputer-based smart temperature controller.
- * LCD display for setting temperature and the temperature in the chamber, parameter memory and recovery function for the purpose of protection against power failure, computer system halt and data loss; protection and alarming against excessive temperature, failure of sensors, creep and , over-current; sound & light alarming; timing function.
- * Separate temperature limiting and alarming system, automatic suspension in time of exceeding temperature limit (optional).
- * UV sterilizing system (optional).
- * RS-485 portal, capable of being connected with printer or computer, recording variations of temperature parameters (optional).
- * Double door (optional).



Technical Parameters:

Model	BJPX-H50IV	BJPX-H80IV	BJPX-H160IV	BJPX-H270IV
Capacity	50L	80L	160L	270L
Temp.Range	RT+5~65°C			
Temp.Resolution	0.1			
Temp.Fluctuation	±0.5°C			
Temp. Uniformity	±1°C(37°C)			
Time Range	1~9999mins			
Shelves(Standard)	2pcs			
Consumption	250W	300W	400W	600W
PowerSupply	AC220V±10%, 50/60Hz(Standard) AC110±10%, 60Hz(Optional)			
Internal Size(mm)	350*360*410	400*400*500	500*500*650	600*600*750
External Size(mm)	450*520*680	500*560*760	600*620*910	720*690*1020
Packing Size (mm)	550*620*780	600*660*860	700*720*1010	820*790*1120
Gross Weight (kg)	40	47	70	90

Constant-Temperature Incubator

Features:

- * LCD display.
- * Microcomputer temperature controller.
- * Double door design and magnetic door sealing.
- * Castors are equipped for easy movement.
- * The working chamber adopts round angle structure, easy to clean.

Safety Functions:

- * Over temperature protection, temperature sensor malfunction alarm.
- * Parameters can be saved automatically when power off or system error.



BJPX-H35

BJPX-H50/80/160/270II

Technical Parameters:

Model	BJPX-H35	BJPX-H50II	BJPX-H80II	BJPX-H160II	BJPX-H270II
Capacity	35L	48L	84L	160L	270L
Temp. Range	RT+5~65°C	RT+5~60°C			
Temp. Fluctuation	±0.3°C	±0.3°C			
Time Range	0~5999mins	1~9999mins			
Shelves	2pcs/adjustable			3 pcs/adjustable	
Consumption	200W	437W	502W	580W	688W
Power Supply	Standard:AC220V,50/60Hz; Optional:AC220V,60Hz; AC110V,60Hz		AC220V,50/60Hz(Standard); AC110,60Hz(Optional)		
Internal Size(mm)	340*320*320	350*348*400	410*405*510	505*455*700	600*600*750
External Size(mm)	620*490*490	510*548*740	570*590*850	673*645*1033	768*795*1083
Package Size(mm)	740*600*670	590*650*930	730*700*1030	800*800*1210	930*940*1250
Gross Weight(kg)	31	50	75	99.5	150

200T/H Automatic Chemistry Analyzer BK-280 (Previous BK-200)

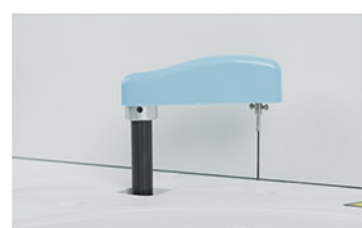


Features:

- ①. 49 Sample positions.
- ②. 56 Reagent positions.
- ③. 120 Reaction cuvettes.
- ④. 200 tests per hour.
- ⑤. Probe with anti-collision function, liquid level detection function.



Reaction Tray
37±0.2°C,
real-time monitor.



Mixer Probe
Teflon coating to avoid
cross contamination.



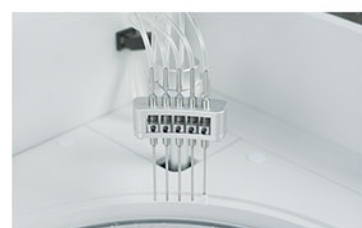
Reagent Tray
2~8°C cooling
for 24 hours.



Sample Probe
Liquid level sensor function.
Anti-collision function. Reagent
volume real-time detection.



Software
User-friendly
software.



Washing Probe
Independent 5-step
washing system.

Parameters:

Model	BK-280	
Overall Performance	Throughput	200 Tests/hour
	Analysis Method	End-point, Fixed-time, Rate(Kinetic), Turbidimetry
	Certificates	CE, FDA, ISO9001, ISO13485
Sample & Reagent System	Sample Positions	49 sample positions
	Reagent Positions	56 reagent positions
	Sample Volume	2~70µl
	Reagent Volume	20~350µl
	Probe	Teflon coating, with anti-collision function, liquid level detection function
	Probe Washing	Automatic washing interior and exterior
Reaction System	Reagent Cooling	Refrigerated tray with independent switch
	Temperature Control	37±0.2°C
	Cuvettes	120 reusable cuvettes, optical length 6mm
	Mixer Probe	Independent stirring
	Washing	Automatic cuvettes washing
	STAT Function	YES
Optical System	Light Source	12V/20W halogen lamp
	Spectrophotometry	Post-spectral spectrophotometry
	Wavelength	340, 405, 450, 480, 505, 546, 570, 600, 630, 700, 750, 800nm
	Absorbance	0~3.0Abs
Calibration & QC	Calibration	Linear: K factor, 1-point, 2-point and multipoint linear Non-Linear: Spline, Polygon, Logit-4P, Logit-5P
	Quality Control	Real-time QC, Westgard multi rule, Cumulative sum check, Twin Plot(2D), Daily QC, Monthly QC
Data Management	Software	Windows 7/8/10, 32 or 64 bit
	LIS System	Bi-direction, support HL7 protocol
	Interface	LAN port access
	Printer	External optional, multiple reporting mode available
Working Conditions	Power Supply	AC220V±10% 50/60Hz, 110V±10% 60Hz, 300W
	Temperature	15~30°C
	Water Consumption	Deionized water: 5L/H
	Humidity	40%~85%
Size & Weight	External Size (W*D*H)	950*600*515mm
	Net Weight	75kg
	Package Size (W*D*H)	1130*735*1040mm
	Gross Weight	135kg

Spectrophotometric Colorimeter

Application:

Spectrophotometric colorimeter is widely used in plastic, electronic, painting, coating, ink, textile, garment, printing and dyeing, food, medical, cosmetic, industries, scientific research institutes, schools and laboratories. It can measure reflectance spectrum and other color index precisely. BCM-810 spectrophotometer not only can help to perform color matching and color management studies, but also can control product quality management accurately. The instrument is equipped with high-end color management software which can connect PC to achieve more extension functions.



Technical Parameters:

Model	BCM-810
Illumination/Observation System	d/8(diffused illumination, 8-degree viewing angle) Conforms to CIE No.15, GB/T 3978
Integrating Sphere Size	Φ58mm
Light Source	Combined LED sources
Sensor	Silicon photodiode array
Wavelength Range	400~700nm
Wavelength Pitch	10nm
Reflectance Range	0~200%
Measuring Aperture	Φ8mm
Color Space	CIE LAB, XYZ, Yxy, LCh, CIE LUV, LAB&WI&YI
Color Difference Formula	ΔE^*ab , ΔE^*uv , ΔE^*94 , $\Delta E^*cmc(2:1)$, $\Delta E^*cmc(1:1)$, $\Delta E^*cmc(l:c)$, CIE2000 ΔE^*00 , $\Delta E(h)$
Other Chromaticity Data	WI(ASTM E313, CIE/ISO, AATCC, Hunter), YI(ASTM D1925, ASTM 313), Metamerism index (Mt), Color strength color stain, Color fastness
Data	Metamerism Index (Mt), Color Strength Color Stain, Color Fastness
Observer	2°/10°
Illuminant	D65, D50, A, C, D55, D75, F1, F2, F3, F4, F5, F6, F7, F8, F9, F10, F11, F12

Model	BCM-810
Display Data	Spectral value/Graph, Colorimetric value, Color difference value/Graph, Pass/Fail result, Color offset, Color simulation, Color index setting(ΔE^*94 , ΔE^*cmc , $\Delta E2000$), Tolerance prompt, Reverse prompt, Time setting, Language setting, Restore factory setting
Measurement Time	1.5s
Repeatability	Spectral reflectance: Standard deviation within 0.1%(400~700nm: within 0.2%) Colorimetric value: Standard deviation within ΔE^*ab 0.04 (Measurement conditions: White calibration plate measured 30 times at 5 seconds intervals after white calibration was performed.)
Inter Instrument Agreement	Within ΔE^*ab 0.2 (Average for 12 BCRA Series II color tiles)
Battery	Li-ion battery. 2800 times within 8 hours.
Lamp Life	5 years, more than 1.6 million measurements
Display	3.5 inch TFT LCD, Capacitive touch screen
Interface	USB/RS-232
Data Memory	1000 Standards, 15000 Samples
Ambient Temp.	0~40°C (32~104°F)
Storage Temp.	-20~50°C (-4~122°F)
Standard Accessory	Power adapter, Li-ion battery, Operating instruction, CD-ROM (Containing management software), Data line, White and black calibration cavity, Protective cover and wrist strap
Optional Accessory	Universal test components, Micro printer, Powder test box
External Size(W*D*H)	90*77*230mm
Package Size(W*D*H)	460*250*380mm
Net Weight	600g
Volume Weight	4kg
Notes	The specifications are subject to change without notice

Vein Finder

Portable Vein Finder

Application:

It can assist the medical staff to find and locate veins quickly and accurately during venous transfusion. It has a significant help in patients with vascular positioning difficulties, such as young children, obesity, swollen tissue, hairy skin, dark skin, hypovolemia, etc.



Features:

- * Compact and lightweight, can grasp a hand;
- * Two kinds of imaging modes: blue & white, red & green, one-click switching freely;
- * Without support, without environmental restrictions on use;
- * Image performance optimization, adjustable brightness, high accurate;
- * Medical cold light, safe for your eyes.

Technical Parameters:

Model	ZD-JM-260-04
Suggested Projection Distance	290~310mm
Light Projection	300~1000lux
Light Wavelength	750~980nm
Battery	Rechargeable lithium battery
Power Supply	D.C. 3.0~4.2V
Battery Working Time	≥ 1hour
Package Size(W*D*H)	220*180*140mm
Gross Weight	2kg

Portable Vein Finder



BKVD-300 main unit

Fixed stand

Mobile stand

Features:

- * Color: 2 colors adjustable.
- * Brightness: 3 degree brightness adjustable.
- * Inverse: Allows clinicians to highlight the veins or the surrounding tissue.

Technical Parameters:

Model	BKVD-300	
Light Type	Near-infrared light	
Infrared Wavelength	850 nm	
Image Resolution	720*480	
Visible Vein Size	≥ 1 mm	
Accuracy	0.25 mm	
Depth of Visible Vein	≤ 12 mm	
Best Projection Distance	200 ± 20 mm	
Image Frame Rate	20 FPS	
LED Lifetime	20000 hours	
Battery	Lithium-ion Battery, 3.6V, 4300mAh	
Battery Working Time	4 hours	
Operating Mode	Handheld or Suspension	
Optional Accessory	Fixed support, Mobile support	
External Size(W*D*H)mm	240*60*60	
Package Size (W*D*H)mm	Main Unit	300*210*120
	Fixed Support	720*180*130
	Mobile Support	600*600*150
Gross Weight(kg)	Main Unit	1.5
	Fixed Support	1.5
	Mobile Support	6.5