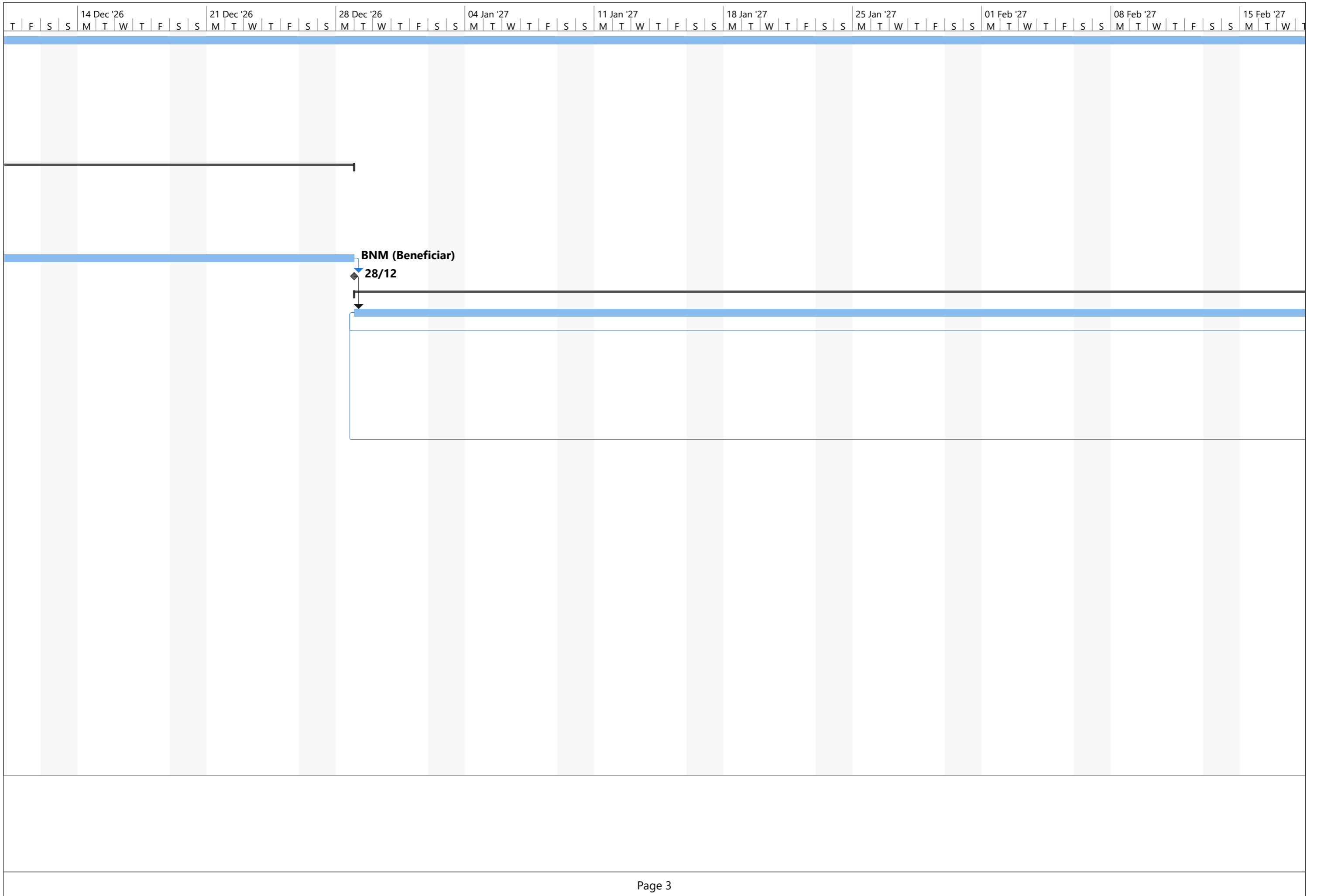


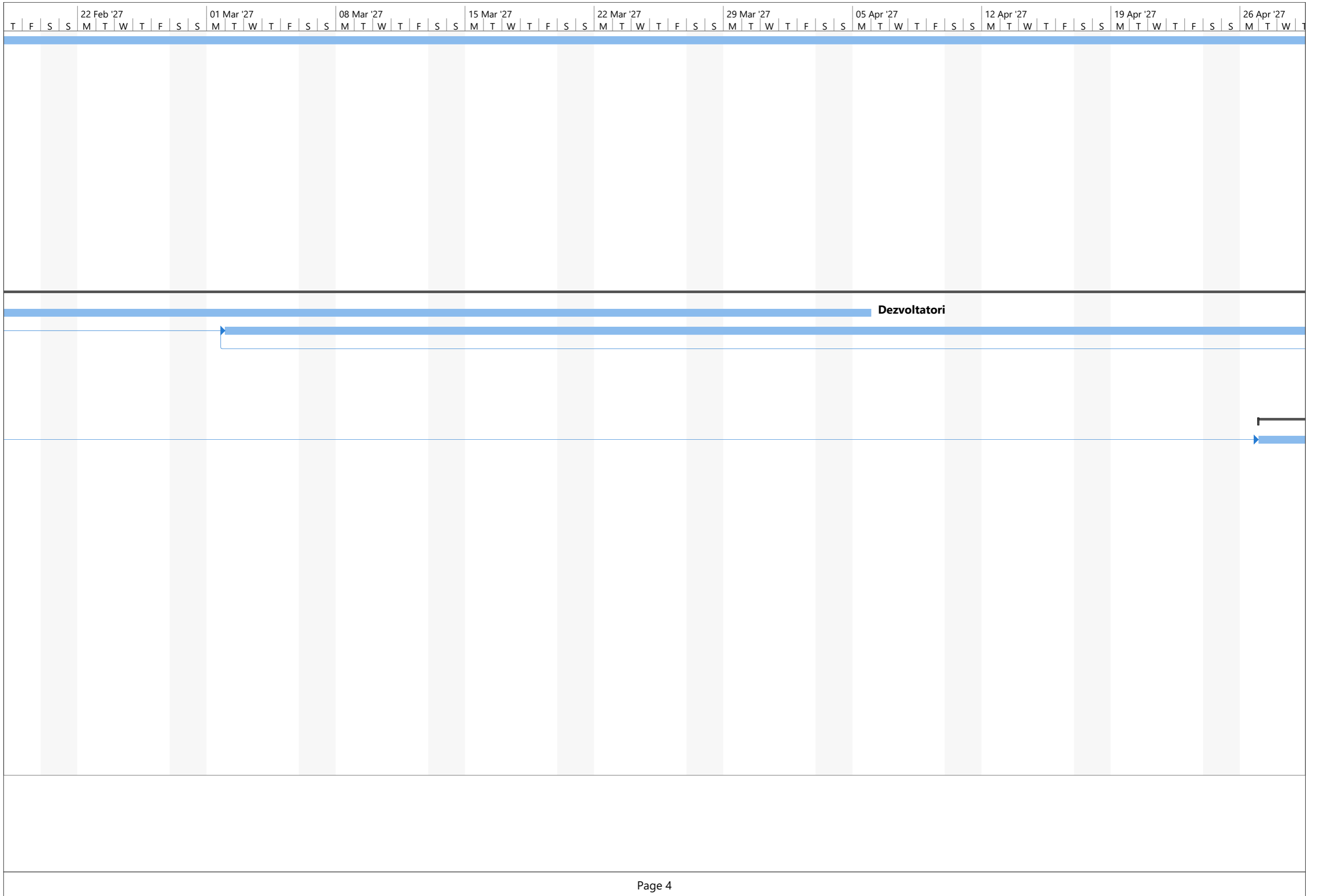
ID	Task Mode	Task Name	Duration	Start	Finish	Aug '26							07 Sep '26							14 Sep '26							21 Sep '26							28 Sep '26						
						T	W	T	F	S	S	M	T	W	T	F	S	S	M	T	W	T	F	S	S	M	T	W	T	F	S	S	M	T	W					
1		Management de proiect	420 days	Tue 01/09/26	Mon 10/04/28																																			
2		1. Etapa de planificare și inițiere	20 days	Tue 01/09/26	Mon 28/09/26																																			
3		1.1 Mobilizare echipă și ședință de lansare (kick-off)	5 days	Tue 01/09/26	Mon 07/09/26																																			
4		1.2 Elaborare/actualizare PID și plan de proiect	15 days	Tue 08/09/26	Mon 28/09/26																																			
5		1.3 Agreare strategie de implementare și criteriile de acceptanță	10 days	Tue 15/09/26	Mon 28/09/26																																			
6		1.4 Instalare mediu de demonstrare preconfigurat	10 days	Tue 08/09/26	Mon 21/09/26																																			
7		Jalon: Aprobare PID / baseline	0 days	Mon 28/09/26	Mon 28/09/26																																			
8		2. Etapa de analiză și design	65 days	Tue 29/09/26	Mon 28/12/26																																			
9		2.1 Ateliere de analiză pe arii funcționale	30 days	Tue 29/09/26	Mon 09/11/26																																			
10		2.2 Analiză diferențe (gap) și propunere soluții	20 days	Tue 20/10/26	Mon 16/11/26																																			
11		2.3 Document arhitectură soluție + specificații integrare/migrare	20 days	Tue 03/11/26	Mon 30/11/26																																			
12		2.4 Specificații de testare	10 days	Tue 17/11/26	Mon 30/11/26																																			
13		2.5 Revizuire și acceptanță Beneficiar (analiză și design) [15–25 zl]	20 days	Tue 01/12/26	Mon 28/12/26																																			
14		Jalon: Acceptanță analiză și design	0 days	Mon 28/12/26	Mon 28/12/26																																			
15		3. Etapa de construcție	170 days	Tue 29/12/26	Mon 23/08/27																																			
16		3.1 Set 1 module (incl. Cartea Mare) – configurare/customizare/dezvolta	70 days	Tue 29/12/26	Mon 05/04/27																																			
17		3.2 Set 2 module – configurare/customizare/dezvoltare	70 days	Tue 02/03/27	Mon 07/06/27																																			
18		3.3 Set 3 module + integrare CBS–ERP/ESB + migrare date	65 days	Tue 04/05/27	Mon 02/08/27																																			
19		3.4 Sesiune de demonstrare pe mediul de dezvoltare	5 days	Tue 03/08/27	Mon 09/08/27																																			
20		3.5 Revizuire și acceptanță provizorie construcție [10 zl]	10 days	Tue 10/08/27	Mon 23/08/27																																			
21		Jalon: Acceptanță construcție	0 days	Mon 23/08/27	Mon 23/08/27																																			
22		4. Etapa de testare	145 days	Tue 27/04/27	Mon 15/11/27																																			
23		4.1 Planificare și pregătire testare	20 days	Tue 27/04/27	Mon 24/05/27																																			
24		4.2 Executare testare integrată (SIT)	90 days	Tue 25/05/27	Mon 27/09/27																																			
25		4.3 Testare de acceptanță (UAT)	35 days	Tue 31/08/27	Mon 18/10/27																																			
26		4.4 Revizuire și acceptanță testare [15–25 zl]	20 days	Tue 19/10/27	Mon 15/11/27																																			
27		Jalon: Acceptanță testare	0 days	Mon 15/11/27	Mon 15/11/27																																			
28		5. Etapa de instruire	60 days	Tue 17/08/27	Mon 08/11/27																																			
29		5.1 Pregătire materiale și mediu de instruire	15 days	Tue 17/08/27	Mon 06/09/27																																			
30		5.2 Sesiuni de instruire (train-the-trainer + pe roluri)	40 days	Tue 07/09/27	Mon 01/11/27																																			
31		5.3 Raport de instruire	5 days	Tue 02/11/27	Mon 08/11/27																																			
32		6. Etapa de pregătire pentru lansarea în producție (Go-live)	35 days	Tue 16/11/27	Mon 03/01/28																																			
33		6.1 Pregătire mediu de producție și migrare finală a datelor	25 days	Tue 16/11/27	Mon 20/12/27																																			
34		6.2 Acceptanța soluției pentru lansare	10 days	Tue 21/12/27	Mon 03/01/28																																			
35		Jalon: Acceptanță pentru lansare (Go-live)	0 days	Mon 03/01/28	Mon 03/01/28																																			
36		7. Etapa de exploatare experimentală (soak)	40 days	Tue 04/01/28	Mon 28/02/28																																			
37		7.1 Exploatare experimentală (soak) și remediere defecte	40 days	Tue 04/01/28	Mon 28/02/28																																			
38		8. Etapa de acceptanță finală	30 days	Tue 29/02/28	Mon 10/04/28																																			
39		8.1 Verificare finală și raport de autoevaluare	10 days	Tue 29/02/28	Mon 13/03/28																																			
40		8.2 Acceptanța finală a soluției [15–25 zl]	20 days	Tue 14/03/28	Mon 10/04/28																																			
41		Jalon: Acceptanță finală a soluției	0 days	Mon 10/04/28	Mon 10/04/28																																			

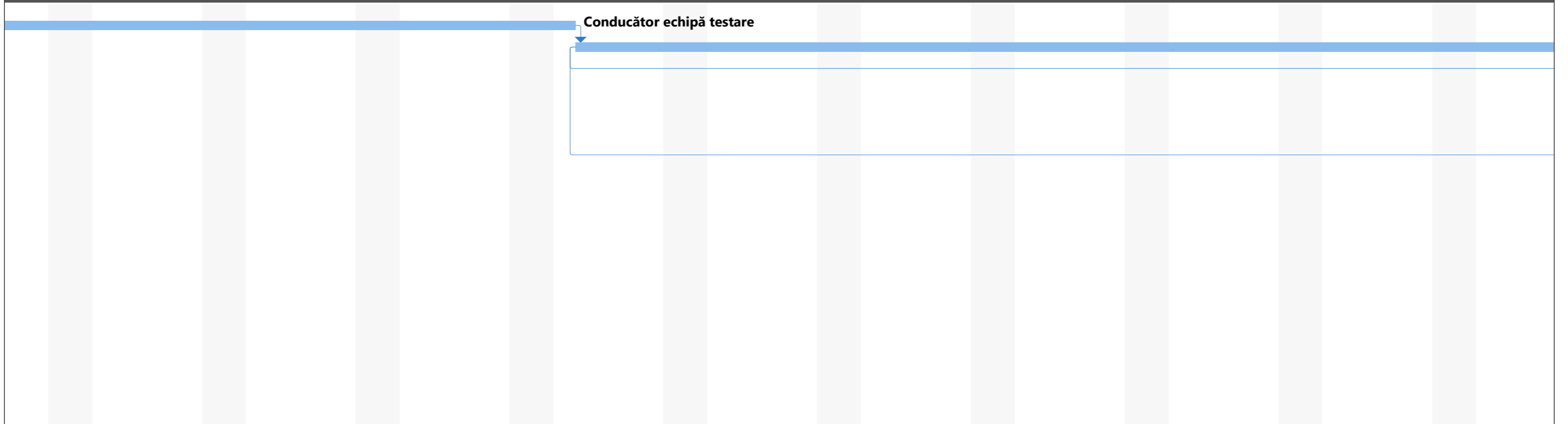
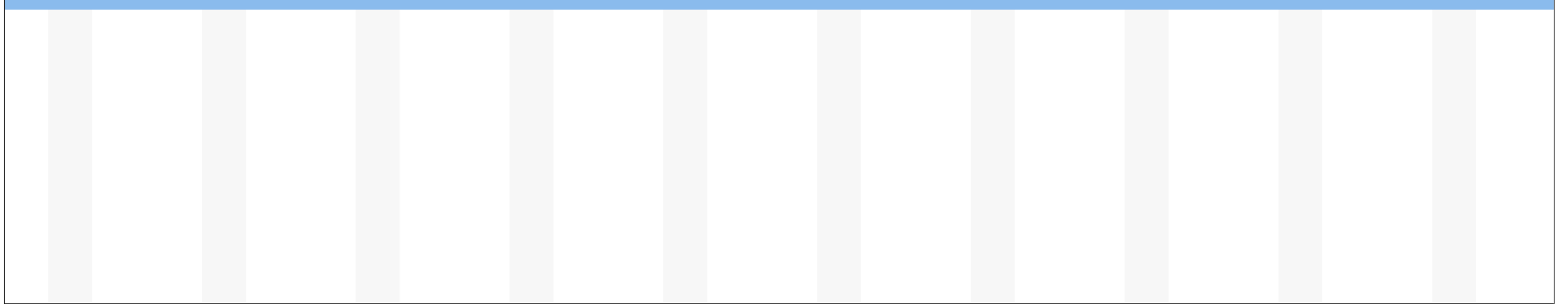
ager de proiect
ager de proiect

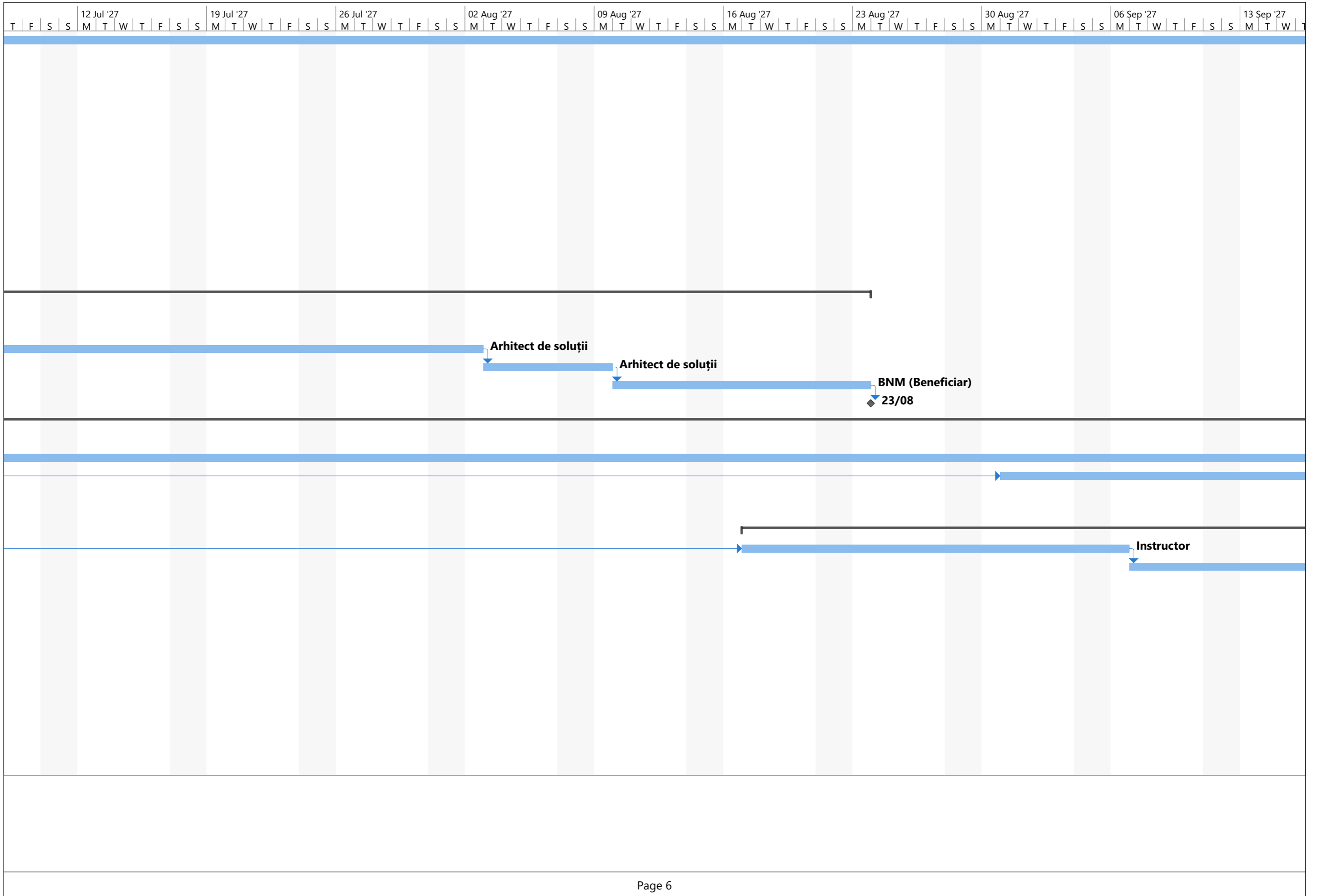
09

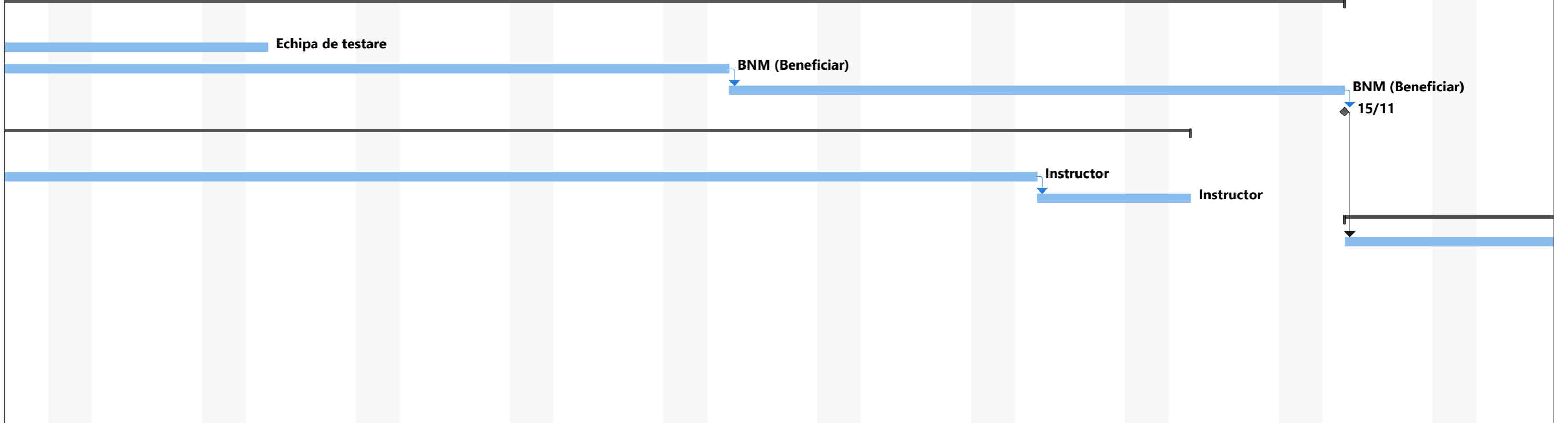
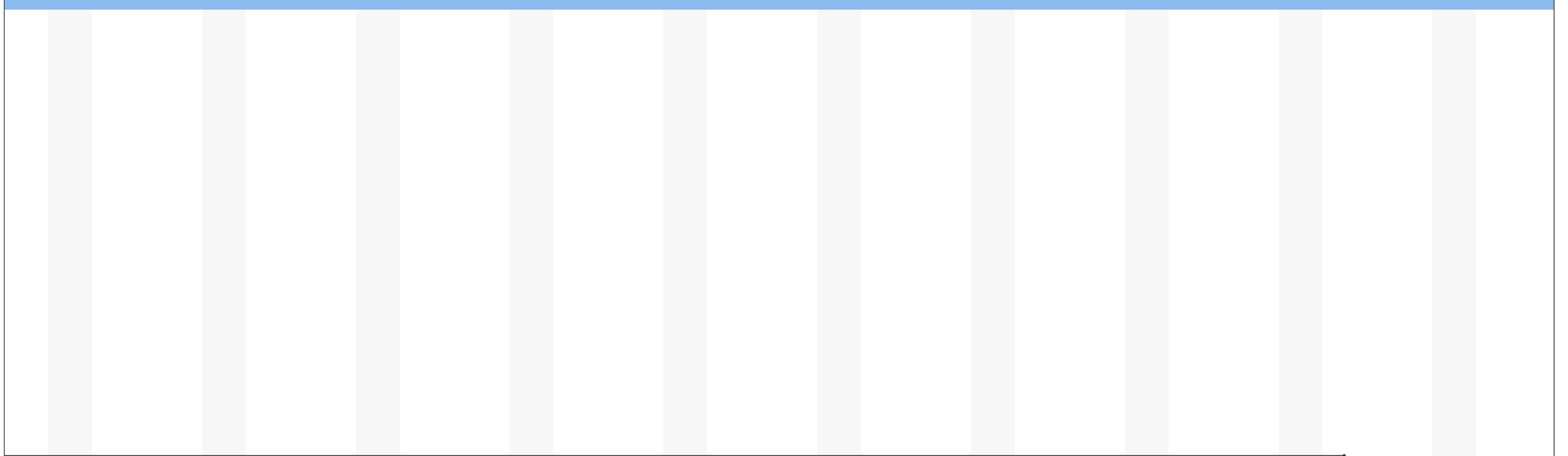


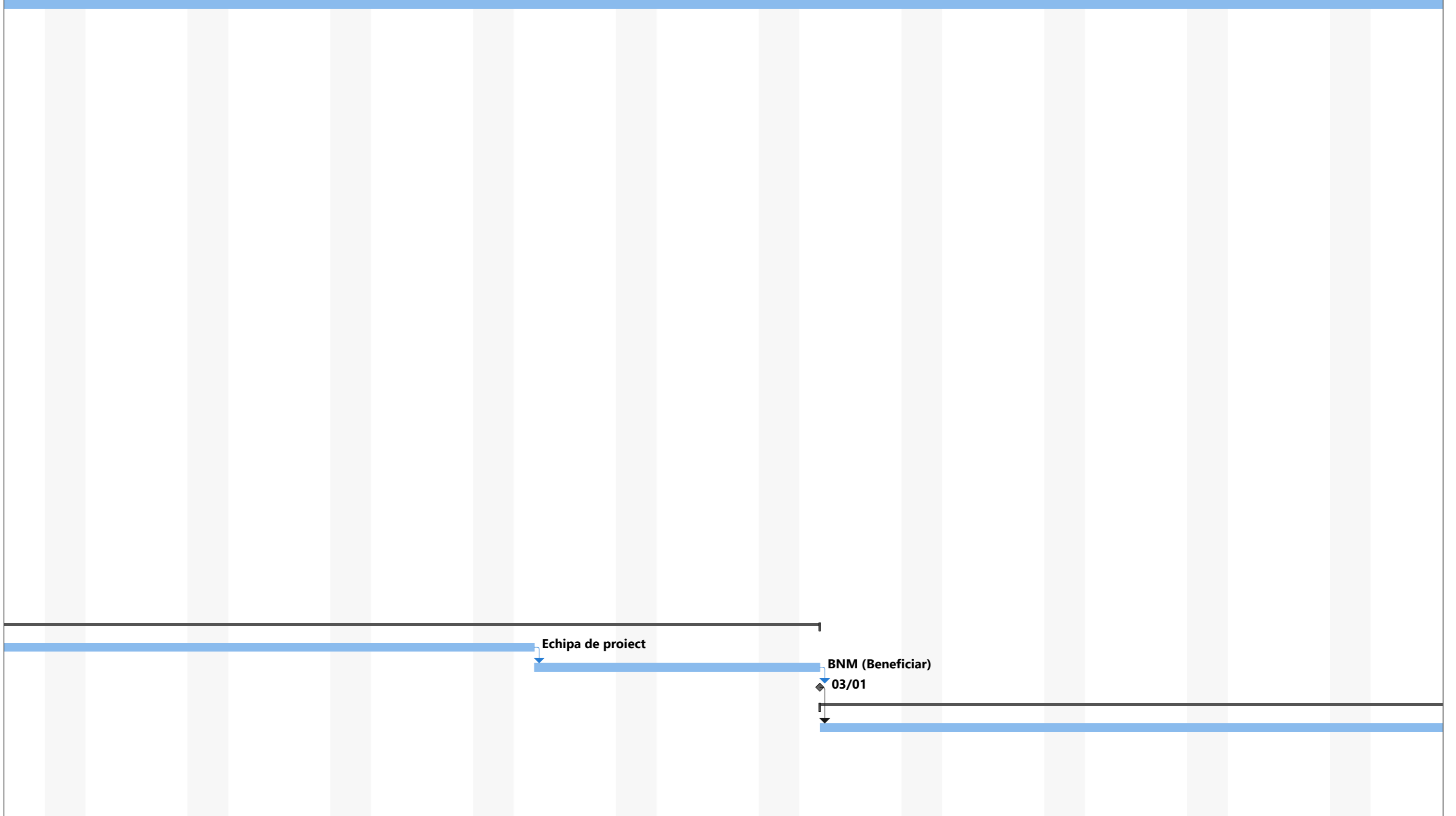












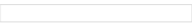



















Project: Project1
Date: Sun 14/06/26

Task		Project Summary		Manual Task		Start-only		Deadline	
Split		Inactive Task		Duration-only		Finish-only		Progress	
Milestone		Inactive Milestone		Manual Summary Rollup		External Tasks		Manual Progress	
Summary		Inactive Summary		Manual Summary		External Milestone	