

- [Road Construction] Providing quality marking solutions
- [Quick Response] Multiple after-sales outlets nationwide
- [Source Material] Scale production and sales



PROFESSIONAL

MANUFACTURER OF ROAD
MARKING MACHINE





海威迈信交通科技



BRIEF INTRODUCTION

Heavsty Transportation Technology(Jiangsu) Co.,LTD. is a scientific and technological enterprise which is engaged in the professional road marking machine research and development, design, production and sales. The company has established and improved scientific and technological research and development system,production process system, quality control system, marketing service system and information management system, rapidly growing into the highest domestic market coverage, Asia's largest road marking machine production enterprise.



HW-2000 Vehicle-mounted silent hot melt kettle

A vehicle-mounted hot melt kettle is a core piece of equipment for road marking. It heats and melts powder coating into a liquid form before marking. Its core advantages lie in its efficiency, flexibility, and economy, along with its quiet operation and minimal environmental impact.



■ Double cylinder large capacity design

The mainstream vehicle-mounted hot melt kettle adopts a dual-cylinder structure (2000kg), with a single-cylinder capacity of up to 1000kg. The dual cylinders melt the material synchronously, supporting continuous operation and significantly improving construction efficiency. It is especially suitable for large-area marking projects.

■ Rapid melting technology

Equipped with a high-efficiency imported temperature-controlled burner, combined with a combustion chamber system, enables full fuel atomization and high-oxygen combustion. The melting speed is increased by more than 30% compared to traditional equipment, shortening the construction period.

■ Hydraulic intelligent mixing system

Hydraulic transmission with stepless speed change and strong stirring in forward and reverse directions can avoid paint deposition and blockage, ensuring uniform melting of the paint.

■ Good mute effect

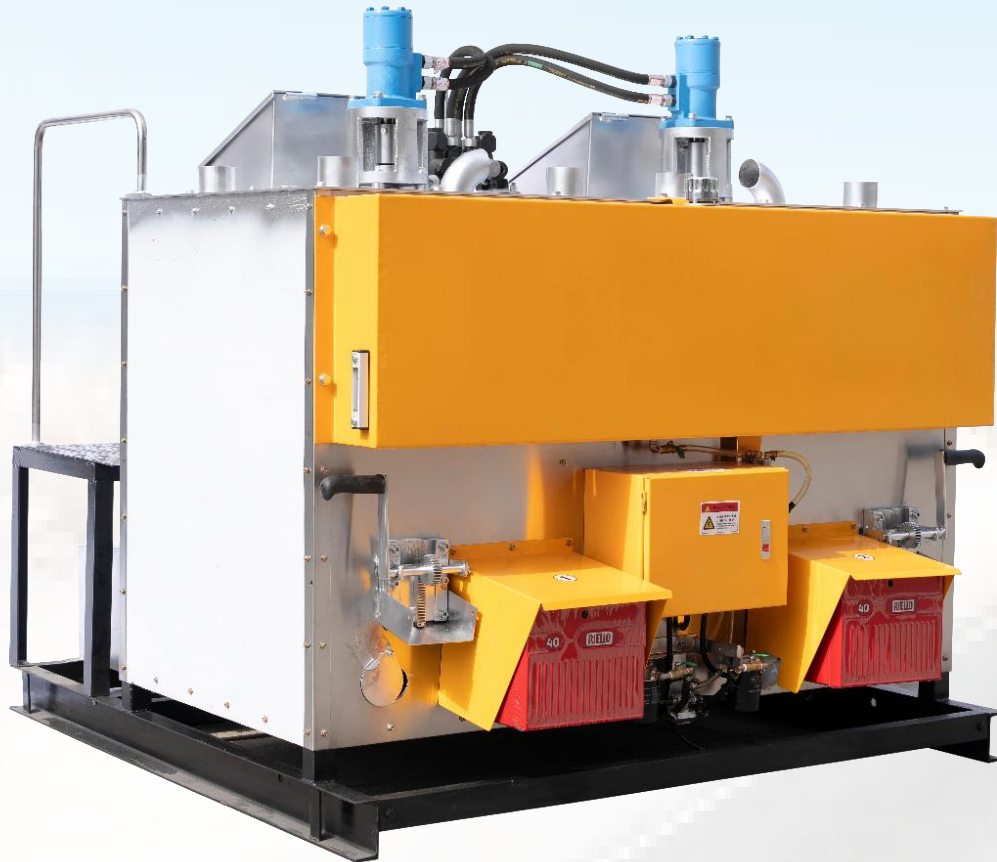
By optimizing the structure of core components, effective control of operating noise is achieved, which can meet the construction needs of noise-sensitive areas (such as residential areas, schools, and areas around hospitals), reduce interference with the environment and residents, and expand operating scenarios.



Device parameters

| | |
|----------------------------------|---|
| Truck | Jianghuai Fuel consumption: ≥ 11.4 |
| Engine | Vehicle power |
| Small crane | $\leq 500\text{kg}$ |
| Electronic systems | DC12V power supply |
| Internal structure of the kettle | Double-layer pot wall to control the fire path |
| | Windproof observation hole, air heat transfer, durable pot bottom without deformation |
| External structure of kettle | Vertical paddle stirring The energy device itself has an energy exhaust device to prevent energy loss |
| Hydraulic transmission system | Multi-way integrated hydraulic control valve, forward and reverse stirring, stepless speed change |
| Hydraulic oil tank | About ≥ 50 |
| Diesel tank | About ≥ 100 |
| Heating system | Imported temperature-controlled burner, 50,000 kcal, fuel consumption is about 4L per hour, dual ovens can be controlled separately, electronic control automatically adjusts temperature |
| Kettle capacity | 1000kg*2 |
| Size | 5990*2200*2800 mm |
| Weight | 4495kg |

HW-1200/2T Diesel Oil Temperature Control Hot Melt Kettle



Engine:18ps/28ps Changchai diesel engine

Electronic system:AC 220V, equipped with leakage protection device

Internal structure of the kettle body:Double wall to control the fire passage; Windproof observation hole, air heat transfer, durable pot bottom without deformation

External structure of the kettle body:Stainless steel housing, upright paddle type stirring energy unit The equipment itself has an energy drain device to prevent energy loss

Hydraulic transmission system:Multi channel integrated hydraulic control valve, forward and reverse stirring, continuously variable speed

Diesel tank:130L/160L three-stage filtration

Heating system:Imported burner from Italy, 50000/100000 kcal, dual furnaces can be individually controlled, electronic control automatically adjusts temperature

Capacity inside the kettle:600kg*2 / 1000kg*2

Size and weight:2000*1810*1760mm/1810*1900*1800mm

Weight:1395kg/1810kg

HW-1.5T Thermal Oil Temperature Control Kettle

| Basic Parameters | |
|-----------------------------------|--|
| Batteries | DC12V |
| Internal structure of kettle body | Frame structure with thermal insulation board between the inner liner and outer cover boards |
| | Double spiral full kettle liner heating system |
| Hydraulic Drive System | Hydraulic two-way stepless mixing, motor BM315 |
| Hydraulic oil tank | 0.063m ³ |
| Diesel tank | 0.078m ³ |
| Heating systems | U.S. diesel version of the stove, automatic ignition, temperature control intelligent system |
| Kettle Content Volume | Approx. 0.815m ³ , can hold 1.5T hot melt paint. |
| Sizes | 1.9*1.2*2.15m(single cylinder) |
| Weights | 1150kg (single cylinder) |



Advantages:

- 1. Automatic ignition:** The key can turn on the stove fire without the need for manual ignition.
- 2. Long lifespan of the pot bottom:** the entire pot is heated, and the combustion chamber is heated; When the pot is heated, the heating area increases by 3.5 times, and the bottom of the pot is no longer heated on one side. The bottom of the pot will not be damaged, and the materials inside the pot will not dry or burn.
- 3. Intelligent temperature control:** Set the material temperature, and when the temperature exceeds the set value, the furnace will automatically turn off. When the temperature is below the set value, the furnace will automatically ignite, which can reduce unnecessary waste of diesel.
- 4. Fuel saving:** Imported stove, diesel can achieve full combustion, there will be no black smoke during use, and diesel will not be wasted.
- 5. Coating capacity:** It can be filled with 1.625 tons (single cylinder) at a time, with a large capacity.
- 6. Less vehicle area occupied:** The 1.5-ton single cylinder kettle occupies 25% less area than the original 1.2-ton double cylinder hot melt kettle. No longer using liquefied gas for heating, no need to carry liquefied gas tanks. The extra area can be used for stacking materials, greatly increasing daily construction efficiency.
- 7. Single cylinder=double cylinder:** When changing from yellow material to white material, manual cleaning can be done quickly. There are two feeding ports on the kettle panel, which are equivalent to two cleaning ports. A long handled shovel can be used to clean yellow materials without the need to heat and clean several packs of white materials. When replacing white material with yellow material, there is no need to clean it.
- 8. Melting speed:** Initially use the first cylinder for 1 hour, 20 minutes to 1 hour, and 40 minutes, and burn 100 kilograms of material every 4 minutes after it is full.

HW-3T/4T/6T Energy Efficient Temperature Control Hot Melt Kettle



3T

Internal structure of kettle body:Frame mechanism, with insulation board heat-insulating material between the outer cover plates of the inner liner:double-helix full kettle liner heating system

Hydraulic Drive System:Hydraulic two-way stepless mixing, motor BM500

Hydraulic oil tank:0.06m³

Diesel tank :0.1m³

Diesel consumption :4kg*2 /h

Heating systems:Italian Riello diesel stove, equipped with an intelligent temperature control system that can automatically ignite and shut down, with a maximum heating value of 100,000 kcal

Diesel engine power unit:12.1kw,2200r/min diesel engine with enhanced alternator, starter, and 12V battery

Heat:Indirect heat transfer through thermal energy

Stirrer:Wear-resistant special steel horizontal axis

Paint capacity:2*1.5T

Gross unladen weight:1605kg

Sizes:2.5*1.27*2.39m



4T/6T

Internal structure of kettle body:Frame mechanism, with insulation board heat-insulating material between the outer cover plates of the inner liner:double-helix full kettle liner heating system

Hydraulic Drive System:Hydraulic two-way stepless mixing, motor BM500

Hydraulic oil tank:0.18m³

Diesel tank :0.18m³ /0.27m³

Diesel consumption :4kg*2 /h

Heating systems:Italy riello diesel version of the stove, equipped with intelligent temperature control system can be automatically ignited and extinguished maximum heat 120kw

Diesel engine power unit:38kw 2400r/min diesel engine at 2400 l/min with reinforced alternator, starter and battery 12V,80 AH with air-cooled aluminum cooler

Heat:Indirect heat transfer through thermal energy

Stirrer:Wear-resistant special steel horizontal axis

Paint capacity:2*2T/2*3T

Gross unladen weight:2980kg /3150kg

Sizes:2.7*2.36*2.65m/2.7*2.36*3.05m

HW-1200 Hydraulic Double Cylinder Hot Melt Kettle

Hydraulic double-cylinder hot melt kettle is one of the main equipment for hot melt marking construction, the equipment adopts multi-channel integrated hydraulic transmission stepless variable speed powerful torque to ensure high performance and large load operation, forward and reverse mixing; stainless steel direct injection stove with high efficiency energy-saving burners to ensure high combustion efficiency, time and energy saving, with a high efficiency of the melt, long continuous working time, easy to operate, easy to maintain and so on.

Engine:16HP diesel engine, electric start

Motor:hydraulic motor

Hydraulic oil tank volume:70L

Agitation:Stepless speed regulation, forward and reverse rotation

Paint Drum Capacity:600kg×2

Burners:Direct-injection high-efficiency burner, the fuel is liquefied petroleum gas, the flue pipe has a cover, the heat preservation effect is good. Bottom of the pan form: 12mm stamped round thickened carbon steel double protection bottom, more durable, more than 5 years

Overall dimensions:1850*1820*1650mm

Weights:1100kg

Thickened high-quality insulation cotton, superior to other similar products



HW-1200 Oil And Gas Dual-use Hydraulic Double Cylinder Hot Melt Kettle

The HW1200T Oil and Gas Dual-uses Hydraulic Double Cylinder Hot Melt Kettle is an improvement on the gas type hot melt kettle. This equipment adopts advanced oil and gas dual-purpose stoves (which can use liquefied gas and diesel as fuel), fully ensuring the convenience and economy of using fuel in special areas. Especially in areas with strong winds, fuel powered vehicles are not easily affected by wind. Improved combustion efficiency, enhanced melting speed, and reduced construction costs, making it the preferred choice for hot melt construction in areas with large temperature differences.

Engine: 16HP electric start evaporative water-cooled diesel engine

Internal structure of the kettle body: Double layered pot walls are used to control the fire path

External structure of the kettle body: stainless steel shell, upright plate stirring.

Hydraulic transmission system: multiple integrated hydraulic control valves, forward and reverse stirring, continuously variable speed

Hydraulic oil tank: 50L

Diesel tank: 100L

Heating system: specially designed oil and steam dual-purpose stove

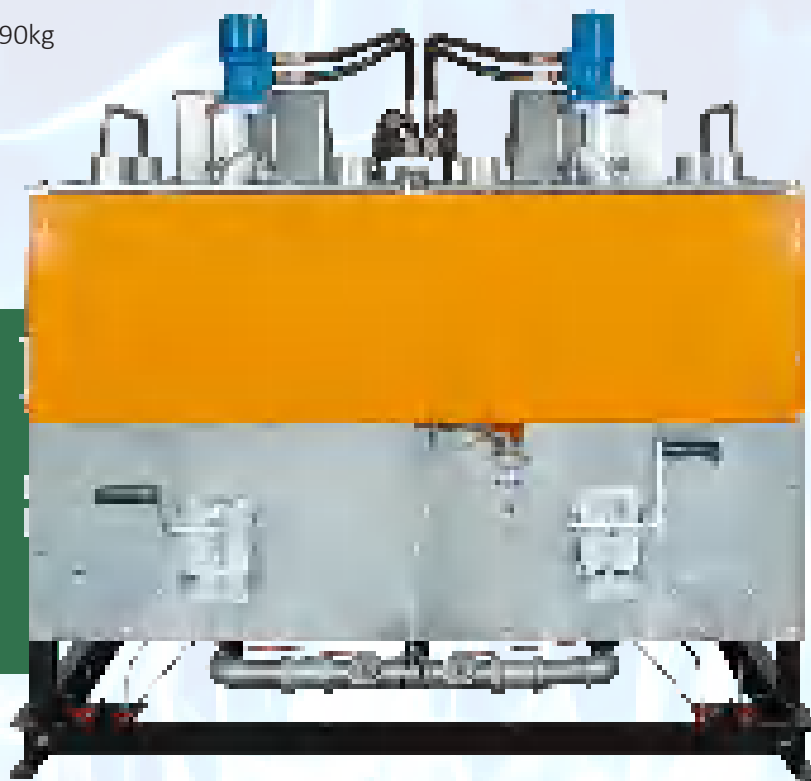
Capacity inside the kettle: 600KG * 2

Size and weight: 1850 * 1820 * 1760mm, 1290kg

Improved combustion efficiency

Enhanced melt speed

Reduced construction costs



HW-500
Hydraulic Double Cylinder
Hot Melt Kettle (parking lot)



HW-600
Mechanical Double Cylinder
Hot Melt Kettle



HW-300
Mechanical Single Cylinder
Hot Melt Kettle

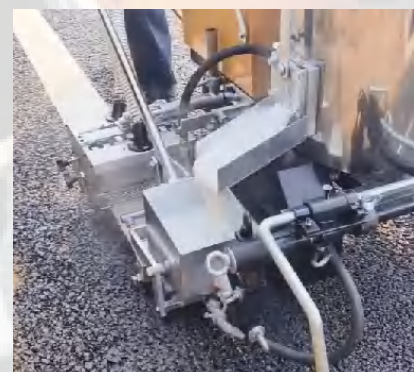


HW-400
Hydraulic Single Cylinder
Hot Melt Kettle



| | | | | |
|---------------------------|--|--|---|---|
| | The equipment is suitable for underground multi-storey parking lot feeding construction, easy in and out! | It adopts mechanical transmission, medium capacity fuel cylinder, direct injection high-efficiency burner, good quality and low price | The equipment is light in quality, small in size, easy to transport, and suitable for parking lots, factories, wharves, and other small-scale construction projects | Hydraulic drive mode, independent cylinder, high-efficiency direct injection furnace, high melting efficiency, small size, easy to carry, suitable for small engineering construction |
| Engine | 7.5PS evaporative water-cooled diesel engine | 7.5PS evaporative water-cooled diesel engine | 6.6PS diesel engine | 7.7PS diesel engine |
| Driving method | The mixing oil is driven by gear pumps, multi-way hydraulic control valves, relief valves and hydraulic motors | The diesel engine drives the mixing shaft through the turbo reduction gearbox and clutch teeth | The diesel engine drives the mixing shaft through the turbo reduction gearbox and clutch teeth | Adopt hydraulic reversing control valve, forward and reverse mixing, infinitely variable speed. Hydraulic motor: BM500 hydraulic |
| Heating systems | By the liquefied petroleum gas tank through the valve for the high-efficiency direct injection stove for gas supply, this stove makes the liquefied petroleum gas combustion more fully and more economical. The heating temperature can be freely adjusted within the range of 0-300° | By the liquefied petroleum gas tank through the valve for the high-efficiency direct injection stove for gas supply, this stove makes the liquefied petroleum gas combustion more fully and more economical. The heating temperature can be freely adjusted within the range of 0-300° | LPG, energy efficient burners/ direct injection stoves | Heating system: liquefied petroleum gas. Energy efficient burners/direct injection stoves |
| Melt Cylinder | Remarkable heat transfer, can hold up to 400 kg, about 16 packages of hot-melt coatings | Remarkable heat transfer, can hold up to 600 kg, about 24 packages of hot-melt coatings | 350L stainless steel cylinder, high carbon steel pan bottom, upright slurry sheet type | 350L stainless steel cylinder, high carbon steel pan bottom, upright slurry sheet type Fuel tank capacity: 40L |
| Thermometer | Induction type heat-resistant and shock-resistant temperature gauge, temperature sensing more accurate | Induction type heat-resistant and shock-resistant temperature gauge, temperature sensing more accurate | Induction type heat-resistant and shock-resistant temperature gauge, temperature sensing more accurate | Induction type heat-resistant and shock-resistant temperature gauge, temperature sensing more accurate |
| Operating method | Manual multi-control valves to control the agitator in two cylinders to do forward and reverse agitation | Hand-clutched gears control the agitator in both cylinders for even mixing | Hand-clutched gears control the agitator in both cylinders for even mixing | Manual multi-control valve to control the agitator in a single cylinder to do forward and reverse agitation |
| External structure | High strength, high temperature and oxidation resistant stainless steel plate construction. Stainless steel construction. Multi-Control Valve with special unloading device to prevent misoperation | High strength, high temperature and oxidation resistant stainless steel plate construction | Frame structure, with heat insulation board between the kettle body and the outer cover plate | Frame structure, with heat insulation board between the kettle body and the outer cover plate |
| Size Weight | 1700*1430*1150mm 700kg | 1480*1430*1669mm 655kg | 1340*750*1660mm 425kg | 1700*840*1490mm 520kg |

HW-860 Hand Push Thermoplastic Marking Machine



Thermal fusion marking machine is the key equipment of thermal fusion marking construction, with the use of thermal fusion kettle to complete the marking construction, the machine adopts a special manufacturing of high-precision one-piece cast iron marking bucket, to ensure that all the marking bucket edges are flush, the head is flush, the thickness is uniform, the line is beautiful. The equipment is lightweight, portable, easy to operate, easy to maintain and many other unique new features design.

Paint bucket: Double layer stainless steel insulated heating bucket, capacity 100kg, plug-in mixing device, can quickly disassemble and replace the paint bucket

Glass microbead storage box: 10KG/box

Glass microbead spreader: synchronous clutch automatic spreader, adjustable

Scoring bucket: high-precision integrated scoring bucket, scraper structure, standard configuration 150mm

Floor blade: Inlaid hard alloy material (pure alloy floor blades can be optional)

Rubber wheel: cast iron wheel, specially made of heat-resistant rubber, with a locator on the rear tail wheel, allowing the vehicle to move forward in a straight line

Heating method: liquefied petroleum gas

Liquefied gas cylinder capacity: 15kg

Marking width: 50/100/150/200/250/300/400/450 (Optional customization available)

Size and weight: 1220 * 850 * 1040mm, 105kg (excluding bucket and box)



HW-880 Hand Push Premium Thermoplastic Marking Machine

Hand Push Premium Thermoplastic Marking Machine is the preferred solution for hot melt marking operation. The exclusive deep punching die, all steel structure and tool free replacement design system have better and stronger equipment quality.

The excellent flow design of the micro bead hopper is perfectly matched with the marking bucket.

The direct ignition of the direct heating system and the on-board hand-held spray gun can provide maximum heat, thus maximizing the material flow.

The three wheel system is equipped with two solid front wheels and one solid rear wheel to provide smooth and quiet operation.

The adjustable joystick can easily adjust multiple heights.

The adjustable head pointer is easily adjusted to follow all marks and draw lines.

Adjustable bead spreader to minimize cost.

Capacity: 52L

Glass bead capacity: 12L

Glass bead dispersion: 20-30g/15cm/m

Marking width: 100mm 150mm 200mm 300mm 400mm&450mm

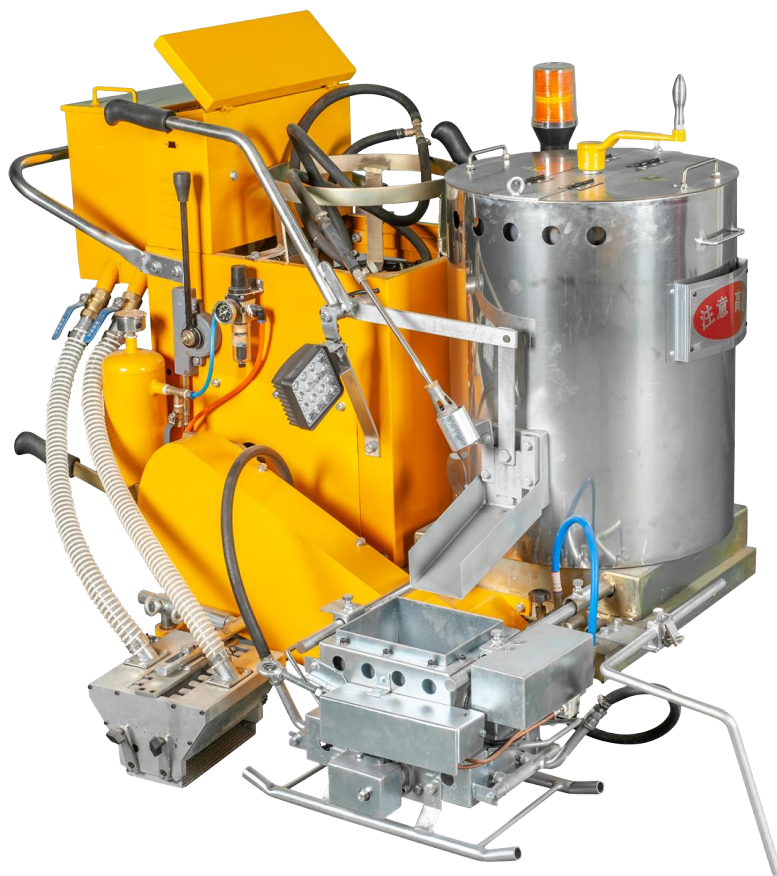
Liquefied gas cylinder capacity: 15kg

Size and weight: 1180*900*1000mm 145kg

Floor knife: equipped with pure alloy floor knife

HW-Self-propelled Thermoplastic Spraying Marking Machine

Self-propelled hot melt spraying machine adopts centrifugal roller spraying principle, through the high-speed rotation of dual-axis gears, generating centrifugal force to spray the paint to the road surface to form a coating film. With jet spraying, the line is smooth, the edge is neat, the thickness is uniform, and the microbead adhesion effect is good. With the high-speed development of transportation, most of the high-grade pavement adopts coarse gravel permeable pavement. Large and medium repair pavement adopts thin slurry sealing process. To our road marking material amount brings new subject. Adopting the new process of hot melt spraying, it not only saves material, but also has good drainage and good reflection.



Engines: 5.5HP Honda engine

Drive unit: Continuously variable speed (Eaton reducer)

Maximum climbing angle: 18°

Paint Drum Capacity: 100kg

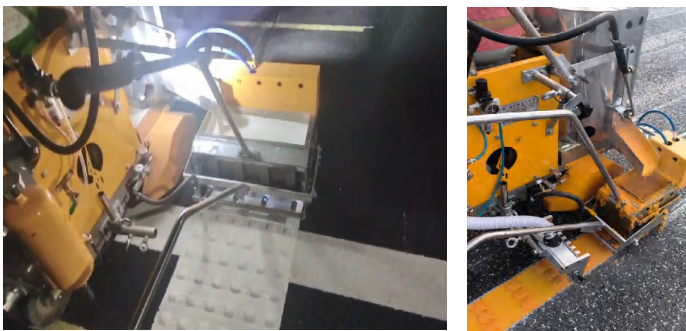
Marking width: 15cm—45cm (Optional customization)

Thickness adjustment: 1.2—2.5mm

Sizes: 1.3*0.93*1m

HW-Raised Oscillating Marking Machine (Gasoline)

Oscillating marking machine adopts the latest German intelligent program controller and humanized control panel to realize a machine to complete a one-time raised type and base marking line construction method at the same time, and with the addition of stepless variable speed walking system, which greatly improves the efficiency of the construction, so that the marking line raised shape, height, spacing, precision and accuracy to meet the needs of various road conditions and to meet the provisions of international standards.



Microcomputer control, driven by high-quality hydraulic system, can be forward and reverse stepless variable speed walking

Engine:Four-stroke gasoline engine

Walking system:Hydraulic drive system (Eaton reducer)

Scribing width:150、200、300、400、450mm

Coating thickness:1.5—4mm (adjustable)

Bulge height: Up to 10 mm (adjustable)

Sprinkler:Automatic Glass Bead Spreader

Glass beads storage box:10KG/box

Tank volume:100kg

Heating method:liquefied petroleum gas

Side cutter material:Cemented carbide

Size Weight:1370*960*1100mm 270kg

Randomly equipped with a set of 15mm oscillation line hopper



American Eaton Walker

Jaguar Air Compressor

HW-Independent
research & development

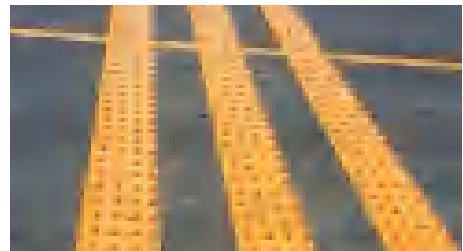
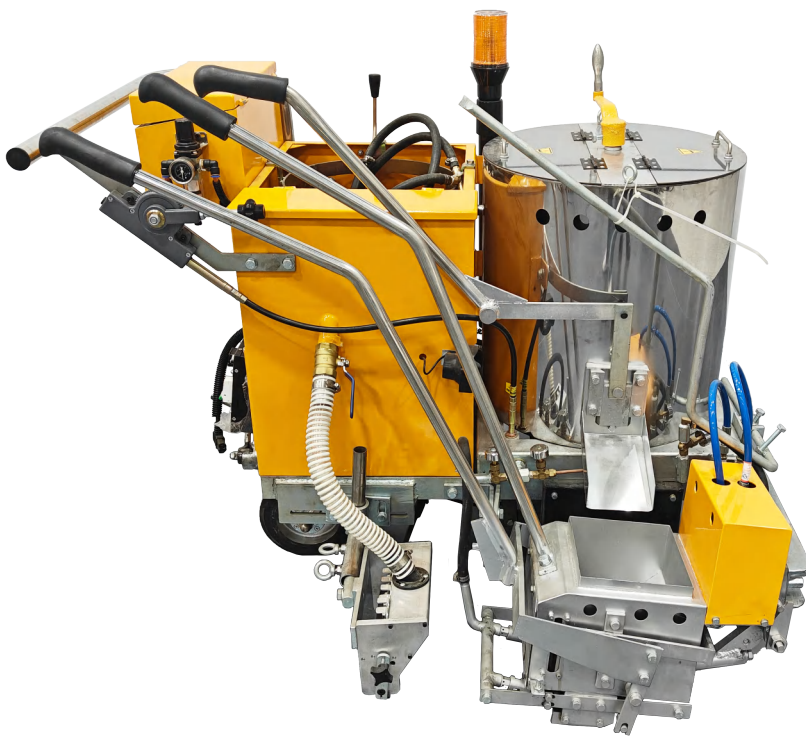
Omron Sensors

UNIQUC Solenoids

UNIQUC Cylinder

HW-Raised Oscillating Marking Machine (Electric)

Oscillating marking machine adopts the latest German intelligent program controller and humanized control panel to realize a machine to complete a one-time raised type and base marking line construction method at the same time, and with the addition of stepless variable speed walking system, which greatly improves the efficiency of the construction, so that the marking line raised shape, height, spacing, precision and accuracy to meet the needs of various road conditions and to meet the provisions of international standards.



Batteries:48VDC 30A

laptops:Siemens synthetic LCD with integrated control panel

Motor:48VDC 550W Two-wheel drive with its own alloy differential, manually adjustable brakes

Air compressor:48DVC 550W 0.8pa
50L/mm Oil-free and silent, maintenance-free

Working speed:≤1000m/H

Maximum gradient:15°

Bulge height:0-10mm

Rubber tire:Iron wheels with special heat-resistant rubber.
Rear tail wheel has a positioner to keep the car moving in a straight line

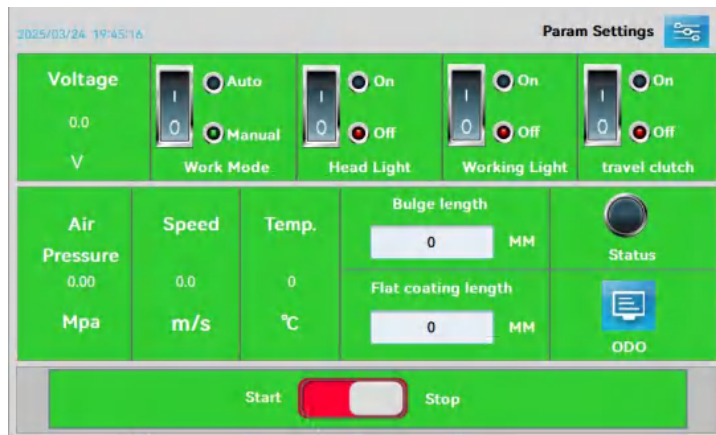
Marking width:150/200/300/400/450mm(Optional)

Size & Weight:1400*1050*1050mm 220kg (Battery not included)

Capacity:100kg

Bead Box Capacity:10kg

Oscillating Marking Machine Customized Interface Description

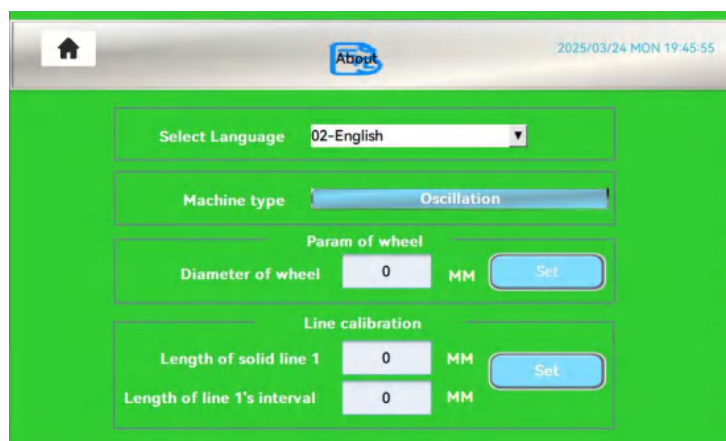


(main page)

Basic function: With convenient switching function of manual and automatic mode, it can precisely control the operation of the equipment to meet diversified construction needs. Real-time monitoring of voltage, air pressure, speed, material temperature and other key data, once abnormal fluctuations, immediately start the intelligent fault diagnosis program, effectively shorten the downtime, to protect the construction continuity.

Built-in odometer: The built-in odometer can accurately record the entire process of spray gun opening and closing, showing the actual construction volume in detail. This allows the operator to keep track of the progress of the project and accurately account for the cost of materials consumed and labor invested.

Encoder status: The computer board monitors the encoder and sensor working status in real time to guarantee the normal data collection and transmission of the equipment and ensure that the scribing machine is in the best working condition.



(Setup page)

Multi-language switching: The PC board supports multi-language switching function, covering English, Russian, Spanish and other common languages.

Wheel Parameter Adjustment: Through precise algorithm and sensor monitoring, real-time correction of car traveling data, to ensure that the distance traveled by the marking machine is calculated accurately and correctly. Effectively avoid marking errors due to wheel wear, guarantee the accuracy of marking construction, so that each marking line is in line with the design standards.

Scribing Calibration Setting: The computer board can accurately calculate the actual length of the spout. The constructor can flexibly adjust the parameters according to the actual needs.

HW-320 Electric Thermoplastic Marking Machine



Voltage (DC) Operating voltage 48V Battery (with digital display) Lithium battery 30AH, portable battery charging convenience

Endurance time:1-3 days on a single charge

Steering system:Carbide Differentials

Driving method:Differential two-wheel drive keeps the unit moving at a constant speed on all surfaces (adapts to all surfaces)

Drive motor:Brushless Super Silent High Power High Torque

Control system:High precision regulator with brake control system Up and downhill counterthrust system

Marking hopper:High precision manganese alloy cast steel scribing bucket imported alloy edge knife

Drum capacity:100KG

Glass bead spreader:Synchronized clutch automatic spreading, adjustable ;Capacity 10kg

Size & Weight:1350mm*960mm*1030mm 160kg (Battery not included)

HW-160
Hand Push Thermoplastic
Marking Machine

HW-860
Hand-push Thermoplastic Square
Box Marking Machine

HW -Self-propelled
Thermoplastic Marking
Machine



| | | | |
|----------------------------------|--|--|---|
| Engine | | | Honda 5.5HP gasoline engine |
| Heated barrel | Double-layer stainless steel insulated heating drum, capacity 100 kg Plug-in manual mixing device, removable unit | Double-layer stainless steel insulated heating drum, capacity 120kg Plug-in manual stirring device, removable unit | Double-layer stainless steel insulated heating drum, capacity 100 kg, plug-in stirring device, can be quickly removed and replaced paint drums |
| Glass beads storage box | 10kg/box | 10kg/box | 10kg/box |
| Glass bead spreader | Manual Synchronized Clutch Automatic Spreading, Adjustable | Synchronized clutch automatic spreading, adjustable | Synchronized clutch automatic spreading, adjustable |
| Maximum Climbing Gradient | | | 15° |
| Working speed | | | >1500m/h |
| Marking hopper | Made of ordinary cast iron, scraper-type structure, standard configuration 150mm | Made of ordinary cast iron, scraper-type structure, standard configuration 150mm | High-precision one-piece scribing bucket, scraper-type structure, standard configuration 150mm |
| Floor knife | Tungsten carbide, able to adjust the marking line | Tungsten carbide, able to adjust the marking line | Inlaid carbide material (pure alloy floor blade available as an option) |
| Thickness Range | 1-2.5mm | 1-2.5mm | 1-2.5mm |
| Heating method | liquefied petroleum gas | liquefied petroleum gas | Liquefied petroleum gas, respectively, to the paint bucket built-in heating and scribing bucket before and after the nozzle and external ignition gun gas supply, the fire size by the ignition gun control |
| Marking width | Width 100/150/200/250/300mm can be replaced according to the project requirements of different specifications of the delineation of the bucket | Width 100/150/200/250/300mm can be replaced according to the project requirements of different specifications of the delineation of the bucket | Width 50/100/150/200/250/300/400/450mm can be replaced with different specification marking buckets according to project requirements. |
| Size&weight | 1200x900x1060mm 150kg | 1190*850*1050mm 185kg | 1230*850*1100mm 160kg |

HW-168 Driving Thermoplastic Marking Machine

HW168 driving thermoplastic marking machine is a practical and multi-functional marking equipment, the equipment itself has a high degree of automation and a high safety factor, which reduces the operator's labor intensity and improves the efficiency of marking construction. The equipment itself can realize multifunctional marking such as hot-melt oscillation and hot-melt scraping by replacing the system, paint tank and other parts according to the user's demand.

Engine power: Honda GX390 (liquefied gas), power 13PS

Heating method: liquefied gas heating; Diesel heating (Adjustable 15 kg liquefied gas canisters self provided)

Vehicle control system: CPU computer board imported from Germany Siemens control system

Working mode: Dual mode (normal dotted line and raised oscillating line)

Walking drive system: liquefied gas power, hydraulic drive, continuously variable transmission

Air compressor: imported air compressor, air pump, displacement air pump pressure 0.4-0.6KG

Work pressure: 0.4kg

Paint bucket capacity: 0.189m³

Glass bead box capacity: 80KG

Working speed: 0-20km/h

Maximum climbing gradient: 30 °

Height of raised marking: 0-10mm

Marking width: 5.10.15.20.30.40.45cm (bucket width can be adjusted according to engineering requirements)

Wheels: 2 front wheels and 2 rear wheels, made of inflatable rubber material, 15 × 6.00-6NHS

Lights: LED headlights, warning lights, turn signals, control panel display lights

Body length, width, and height: 2.8 × 1.46 × 1.7m

Pointer length: 2m (extendable)

Weight: 965KG



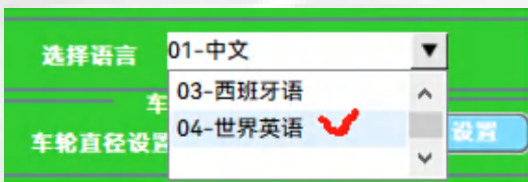
In the field of road marking construction, a powerful touch computer board can greatly improve the operation convenience and construction accuracy of the marking machine, bringing unprecedented efficient experience for road marking construction.



(Main page)



(Lighting Control Page)



(Setup page)

Convenience of operation: with automatic opening and lifting function, it reduces frequent manual operation, reduces labor intensity and improves work efficiency.

Monitoring and Switching: Covering key indicators such as voltage, air pressure, hydraulic pressure, flow rate, etc., it provides construction workers with intuitive and accurate feedback on the operating conditions of the equipment. Meanwhile, unit switching follows the language version, and inch and millimeter units do not need to be converted manually.

Manual-automatic switching: It is equipped with convenient switching function of manual and automatic modes. Automatic mode is suitable for regular marking construction; manual mode is designed for drawing special marking.

Fault diagnosis function: real-time monitoring of voltage, air pressure, hydraulic pressure and other key data, once the data appear abnormal fluctuations, immediately start the intelligent fault diagnosis program. Through data analysis, it can quickly locate the source of the fault, and the construction personnel can quickly investigate and repair the fault accordingly.

Multiple Lighting Settings: In order to ensure construction safety, the computer board supports headlight, warning light and laser light. The laser light can accurately indicate the trajectory of the demarcation line under the dim light environment to assist the operation of the construction personnel; the warning light continues to flash when the equipment is in operation to warn the surrounding pedestrians and vehicles to avoid collision accidents; the headlamp provides sufficient illumination for the construction at night to widen the field of vision of the construction personnel and ensure the construction at night to work safely and efficiently.

Coder and sensor monitoring: the computer board real-time monitoring of the coder and sensor working status, to ensure that the equipment data collection and transmission is normal, to ensure that the marking machine is in the best working condition.

Multi-language switching: PC board supports multi-language switching function, covering English, Russian, Spanish and other common languages.

Wheel parameter adjustment: through precise algorithms and sensor monitoring, real-time correction of the car traveling data, to ensure that the distance traveled by the marking machine is calculated accurately and correctly. Effectively avoid marking errors due to wheel wear, to ensure the accuracy of marking construction, so that each marking line is in line with the design standards.

Odometer Function: The built-in odometer can accurately record the entire process of the spray gun from opening to closing, and present the actual construction volume in detail. This allows the contractor to clearly grasp the progress of the project and accurately account for the cost of materials consumed and labor invested.

Glass bead spreading amount regulation: the computer board can accurately calculate the glass bead spreading amount. Construction personnel can flexibly adjust the spreading parameters according to the actual demand, avoiding the waste of glass beads and reducing the material cost while ensuring the reflective effect of the marking. At the same time, according to the glass beads spreading situation, the construction personnel can also assess the quality of marking construction, to ensure that the marking line meets the expected reflective and durable standards.

HW-618 Driving Thermoplastic Scratch Marking Machine



Engine: Kubota V1505, 19-37kw,3600r/min

Fuel tank: diesel, capacity: 0.054m³

Driving/Braking System:Hydrostatic drives, also used as service brakes, parking brakes Hydraulically controlled multi-disc brakes

Wheels: 6.00-9 NHS*4

Insulation cylinder: with agitator (can be customized) inner diameter: 940, height 770, volume 534L, 0.53m³ (about 1T)

Steering: standard machinery for steering by means of worm gear rolls

Compressor: 0.21m³/min

Working Air Pressure:7 bar, silent safety valve

Electronic system: 12V

Heating method: gas heating

Additional equipment: can be equipped with 15.20.30.40cm scraping bucket, oscillation bucket (can be customized according to requirements)

Feed:Pneumatic opening and closing, pedal control

Glass bead equipment: spray broadcasting, pressure adjustable

Glass bead tank capacity: 0.07m³

Total weight(empty): About1.8T

Size: Length 4 m (excluding pointer)*Width 1.4 m (excluding hopper)*Height 2.2 m (adjustable)

HW-618 Driving Thermoplastic Extrusion Marking Machine



Engine: Kubota V1505, 19-37kw

Fuel tank: diesel, capacity: 100 * 18 * 30cm

Electronic system: 12Vdc

Steering: hydraulic direction

Walking Drive/Braking System (Danvers): Hydrostatic, Hydrostatic Simultaneous Service Brakes, Hydraulic Driven Multi Disc Brakes as Parking Brakes

Tire: Front wheel: 6.00-9 12PR, 5-hole wheel rim/Rear wheel: 6.00-9 12PR, 5-hole wheel rim

Compressor: EV80 2-cylinder Boge compressor, mechanically driven by Poly-V belt, with a conveying capacity of 1060 liters/minute

Operating pressure: 7 bar, silencing safety valve

Insulation cylinder: With stirrer, other container sizes available on request, capacity: inner diameter 940, height 770, volume 534L, 0.53m³ (about 1T)

Thermal oil heating: diesel(U.S. direct injection stoves)

Extruder: Path related, different extrusion widths (5, 10, 12, 20cm) available (customizable) (one bucket for three uses)

Additional equipment: Extruder head quick cleaning device

Glass bead device: Bead spreader up to 30 cm depending on the path, air pressure spraying, available on request.

Total weight (empty): About 1.8T

Size: 4.30 * 2.14 * 2.38 m

HW-618 Driving Cold spray Marking Machine (8 guns)

Engine: Kubota D1803, 30 horsepower (22 kW)

Fuel tank: 54L

Electronic system: 12V

Driving/Braking System: Hydrostatic, Hydrostatic Simultaneous Service Brakes, Hydraulic Multi Disc Brakes as Parking Brakes

Tire: Front wheel: 6.00-912PR, 5-hole wheel rim

Rear wheel: 6.00-912PR, 5-hole wheel rim

Compressor: Italian dual cylinder 2070 head, 0.8Mpa, speed 1050rpm/min, 320L/min

Working pressure: 8 bar, silencing safety valve

Insulation material tank: Capacity: 1T, with mixer, other sizes of containers can be provided as needed

Steering: Hydraulic steering

Glass bead device: Capacity: 100L, can provide 30cm bead spreader depending on the path according to requirements, air pressure spraying

Size: Approximately 4.23 x 1.33 x 2.45 meters (excluding equipment) (excluding actuator)

Paint pump: Graco airless 18 liters/minute with piston accumulator

Additional equipment: Optional: Airless handheld spray gun with hose reel

Post diffusion device: optional path related bead spreader with a maximum spreading range of 60 centimeters



HW-618 Driving Two-component Marking Machine (98: 2)



Engine:Kubota 1505, Rotation Speed: 3000r/min

Fuel tank: diesel, approximately 54 L

Steering system:hydraulic steering system, supporting customization and upgrade as needed

Drive system/braking system:Hydraulic brakes, with the hydraulic device also including a hydraulic multi-plate brake for service braking and a hydraulic multi-plate brake used as a parking brake. (Poclairn motor)

Wheel:Front wheel 185 R 14 -5-hole rim Rear/ Rear wheel: 225 R 15 -6-hole rim

Compressor: Italian double-cylinder 2090 head, with a maximum speed of 930 rpm

Working air pressure:8 bar (equipped with a silent safety valve)

Power system:24V

Flow rate:620L/min

Non-pressurized reservoir:approximately 200 L - containers of other sizes are available upon request

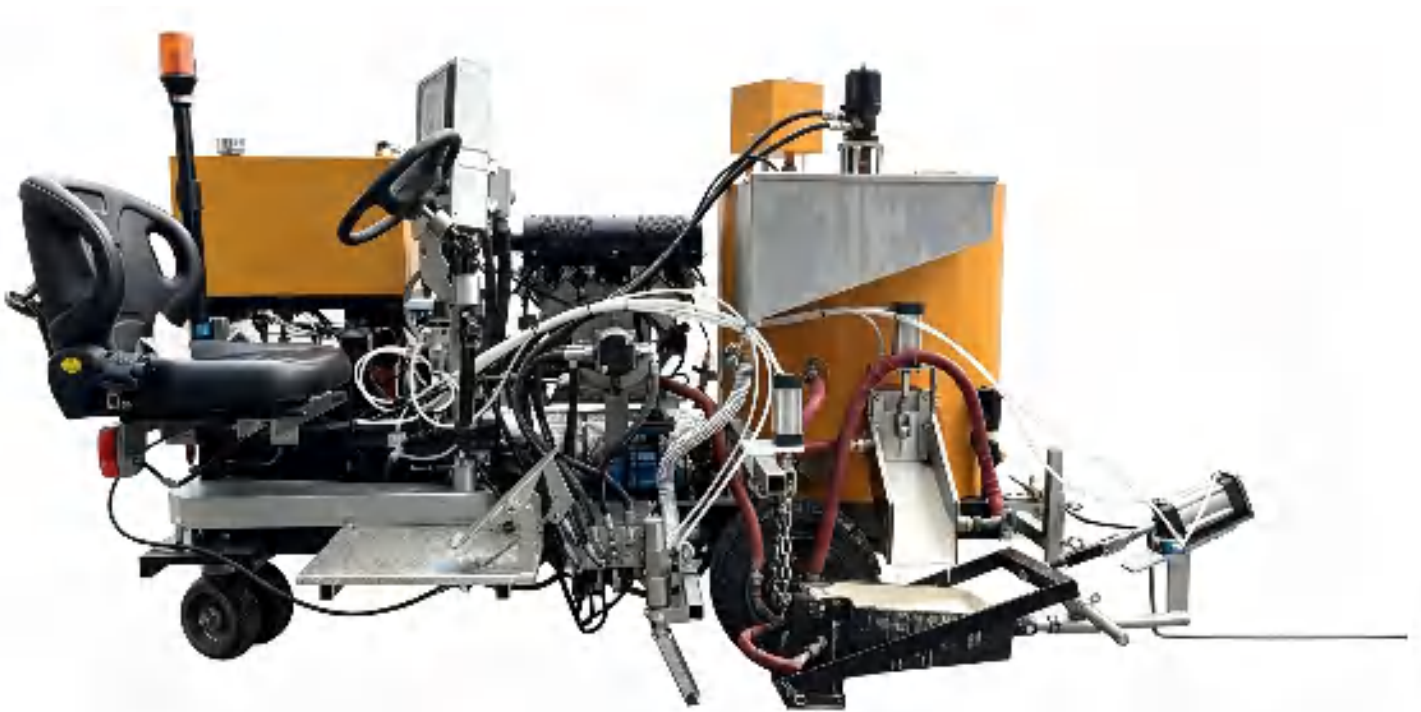
Curing agent pump unit:Optional 98:2 mixing ratio or variable curing agent dosage "Varimix", using airless pump, with a delivery rate of approximately 20 L/min

Paint tank capacity:1 mixer with a capacity of approximately 650 liters + 1 mixer with a capacity of approximately 400 liters. Containers of other sizes are available upon request

Post-diffusion device:Optional bead spray gun or bead diffuser with a spray range of up to 30 cm

Size & Weight:Approximately 4.22*1.6* 2.45m / 1.7T (may vary depending on the equipment)

HW-3A Multi functional Ride on Hot Melt Marking Vehicle



Advantage

1. No open flames, no gas cylinders - breaking through construction restrictions in first tier cities
2. Comes with a 50000 kcal imported burner - no need for a hot melt kettle, directly heats the coating
3. Three wheeled driving with a 1.5-meter ultra small turning radius - flexible U-turns on ramps and narrow roads
4. Hydraulic continuously variable transmission+stable braking on steep slopes - A-grade safety, able to handle slopes with ease
5. Aluminum magnesium silicate insulation cotton - efficient insulation, completely eliminating the risk of burns

Engine: HD2V95 air-cooled diesel engine, 1247 cc

Rated power: 20KW/3600rpm

Air compressor: Italian double cylinder 2070 head, 0.8Mpa, speed 1050rpm/min, 320L/min

Walking speed: 0-5km/h

Pressure glass bead container: 50 kg (maximum pressure 1 bar)

Paint tank: 360kg

Coating bucket type: Four layer thermal oil insulation heating bucket

Dimensions (length x width x height): 2500 x 1500 x 1620mm (depending on the device)

Weight (including accessories): approximately 1360kg

Control System: Intelligent Control Panel

Steering System: Mechanical Steering

HW – 18CS

Car mounted cold spray marking vehicle



Marking method: high-pressure airless spraying/two-component 98:2 mixed spraying
Length, width, and height: 5995 × 2000 × 2330 mm

Material storage

Paint bucket capacity: 700 (single bucket design)

Glass bead jar capacity: 300 L (pressure type spray bead jar)

Curing agent tank capacity: 10 L (compatible with two-component 98:2 ratio) (optional: two-component design)

construction performance

Marking width: 50-600 mm (adjustable by replacing nozzle/marketing bucket)

Spray thickness: 0.2-0.6 mm (room temperature/two-component marking)

Spray gun configuration: Comes with 2 pneumatic spray guns and 1 manual spray gun as standard

Construction efficiency: can achieve long-distance continuous operation, greatly reducing the number of material replenishment times

HW-660 Multi-functional Driving Thermoplastic Marking Machine



Engine:Japan Kubota 67.6kw

Steering:steering by means of steering gear-operated cylinders

Traveling drive brake system (Danforth):Hydrostatic simultaneous service brakes, hydraulically actuated multi-disc brakes as parking brakes

Scribing speed: 3-8 km/h

Marking thickness: between 1.5~5.0mm, can be constructed on high roughness road surface (such as thin slurry sealing road surface)

Computer: full touch screen panel, computerized precise control of construction, can realize non-stop change of line type

Glass bead tank: with pressure glass bead tank, can realize different specifications of double bead sowing

Air compressor: imported 3m³/8bar

Application line type: a variety of drainage structure marking, such as fishbone, ribs, checkerboard, ladder line, etc

With hot melt kettle function: with 1.5 tons of hot melt kettle, heat conduction oil circulating heating, precise heat preservation and temperature control

Construction process: extrusion construction process, reducing mechanical wear and prolonging the life of equipment

Optional: sunshade cover, cruise control, quick edge change, double spreading system with pressurized glass beads, automatic water line system and other supporting equipment

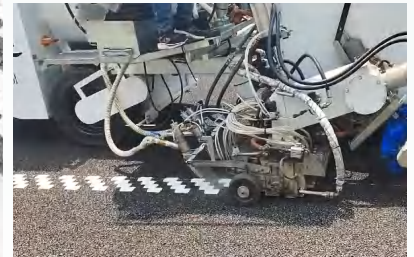
Paint cylinder capacity: 1-1.5T

Size (LWH): 6.7*2.4*2.5m

Total weight: 5T

Advantage

- Fast construction speed and high efficiency
- Belonging to larger construction equipment, reducing casualties caused by traffic accidents during the construction process
- Long maintenance free cycle and durability
- Extrusion construction technology, precise control of coating dosage, avoiding unnecessary consumption
- User friendly and easy to use (cruise control, computer system, etc.)
- Rapid conversion of operation and construction methods, achieving the installation of marking equipment from one side to the other in half an hour
- Minimal maintenance (high-quality components) and simple and convenient maintenance
- Customizable marking equipment according to customer needs

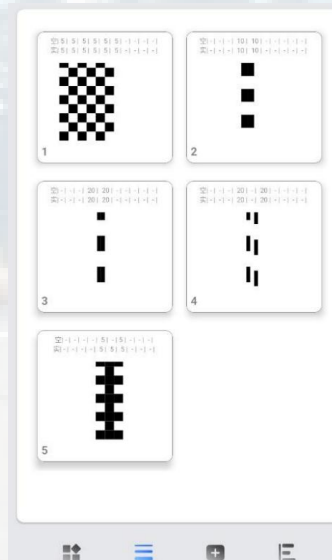


Computer Board System



(Main Interface)

- ① fuel gauge
- ② speedometer
- ③ RPM gauge
- ④ Engine operating hours
- ⑤ Air Generator Pressure Values
- ⑥ Air compressor temperature value
- ⑦ Thermal oil temperature value
- ⑧ Hot melt temperature values
- ⑨ Hot melt heating state



(Multiple Marking Preparation Systems)

More than 80 wire types can be switched at any time

spot checksquare

solid line

dotted line

two-line

double solid dashed line

.....

Glass bead switch, one-touch discharge

Feed motor speed setting, raindrop motor speed setting

Solid Line Compensation Setting:Adjustable parameters according to actual needs, to ensure that the realization of the width and thickness of the line is uniform, to avoid breaks and leakage of paint, to improve the quality and integrity of the marking

Air compressor pressure value:Understand the system operation status, demand of air-consuming equipment, working load of air compressor and energy consumption.

Engine operating hours:Reflects the level of equipment usage, indicates maintenance needs, assists in failure risk assessment, and is used to calculate fuel consumption rates.

Job distance (current job):Detailed presentation of the actual construction volume, the construction personnel can use this to clearly grasp the progress of the project, and accurately account for the cost of material consumption and labor input.



Engine:Japan Kubota v3800-t 67.6kw

Steering:Steering cylinder operated by steering gears

Air compressor:Germany rotorcomp 5m³/MIN 15MPa

Traveling drive brake system (Danforth):HHydrostatic simultaneous service brakes, hydraulically actuated multi-disc brakes as parking brakes

Scribing speed: 3-8 km/h

Marking thickness: Between 1.5~3.0mm, it can be used in the road surface with high roughness (such as thin slurry sealing road surface)

Computer: Full touch screen panel, computerized precise control of construction, can realize non-stop change of line pattern

Cruise mode: Constant speed cruise construction mode, uniform and stable marking quality

Glass bead tank: with pressure glass bead tank, can realize different specifications of double bead sowing

Marking type: thermal spray, multiple drainage structure marking

With hot melt kettle function: with 1.5 tons of hot melt kettle, heat conduction oil circulating heating, precise heat preservation and temperature control

Construction process: air pressure spraying construction process, high construction efficiency. Save paint, strong adaptability, even and fine coating, improve the construction environment.

Optional: sunshade cover, cruise control, quick edge change, double spreading system with pressurized glass beads, automatic water line system and other supporting equipment

Paint cylinder capacity: 1-1.5T

Size (LWH): 6.7*2.4*2.5m

Total weight: 4.25T

Tires: Front: 195R14C Rear: 225/75R15

Burner: 3450rpm

Heat transfer oil pump: Model 25-25-160

HW-18L-2 Vehicle Mounted Dual Cylinder Dual Pump Cold Spray Marking Machine (can be made two-component)

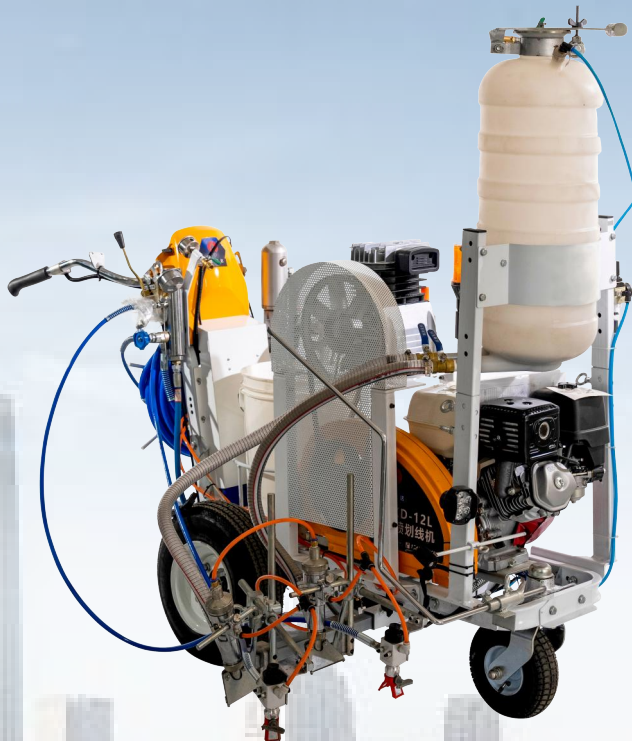
Vehicle-mounted cold spray marking machine is a special equipment for large-scale highway projects, applicable to highways, airports, the application of solid lines, dotted lines, double yellow line cold spray cold paint marking. The equipment is equipped with double guns can be connected with manual flat spray gun, with double paint bucket, can spray different colors of paint at the same time.



| | |
|-------------------------------------|--|
| Engine | Honda 270 (optional diesel engine) |
| Flux | 20 lpm*2 |
| Pressure | 30mpa |
| Spray width | 50-900mm(up to 6 guns working at the same time) |
| Thickness | 0.2-0.6mm |
| Paint Drum Size and Capacity | 765*555*1100mm single cylinder430L,0.43m ³ ,0.516T |
| Size & Weight | 1820*1430*1650mm 920kg (Diesel and 1.2T version) |

| Main Configurations | |
|--|---|
| Chinese/English Auto Disconnect Controller | oil tank |
| gear pump | 2 automatic spray guns |
| pressure regulator | 2 high pressure hoses (3.5m) |
| accumulator | 10 m high pressure hose, 1 manual spray gun |
| commutator | Rotary sensing systems |
| Reversing cylinder | Spray gun holder 1 set |
| Paint High Pressure Pump | Vehicle-mounted waterline stand |
| Filter | Air Compressor |

HW-12L Hand Push High-Pressure Airless Cold Spray Marking Machine (Updated)



- Power:**5.5PS(Honda engine)
- The way the pump operates:**displacement hydraulic pump
- Spray gun:**2 (automatic)
- Fuels:**diesel
- Maximum flow rate:**12L/min
- Maximum spray pressure:**23MPA
- Spray width:**0-300mm(single gun) 50-600mm(double guns)
- Spray thickness:**0.2-0.4mm
- Maximum scribing speed:**13km/h
- Maximum nozzle size:**0.048(Single spray gun)
- Aluminum fuel tank capacity:**13L
- High-pressure pipe lengths:**15m
- Function:**Self-propelled, laser-guided; automatic line breaks
- Upgrade:**Glass bead spreading function
- Size Weight:**1700*1130*1600mm 230kg

Computer Board Customization Interface



(Main Page)

Equipped with convenient switching function of manual and automatic modes, it precisely controls the operation of the equipment to meet diversified construction needs. Real-time monitoring of voltage, air pressure, hydraulic pressure and other key data, once abnormal fluctuations, immediately start the intelligent fault diagnosis program, effectively shorten the downtime, to protect the construction continuity.



(Lighting control page)

Headlights, warning lights, laser lights set to protect the construction safety; computer board real-time monitoring of the encoder and sensor working status, to ensure that the equipment data collection and transmission is normal, to ensure that the marking machine is in the best working condition.



(Settings page)

Equipped with advanced touch screen, multi-language switching, real-time parameter monitoring and unit switching, wheel diameter adjustment correction, odometer function, and glass bead spreading volume regulation.

Heavsty Cold Spray Marking Machine (Legend)

HW-4021 Hand Push Cold Spray Machine

Maximum flow rate: 4 Lpm
Hydraulic pump: domestic
Spray width: single gun maximum 150-300mm
Honda engine: 5.5HP
Size: 1.7*0.9*1m
Weight: 85kg



HW-7025 Hand Push Cold Spray Machine

Maximum flow rate: 7 Lpm
Hydraulic pump: domestic
Spray width: single gun maximum 150-300mm,
double gun 50-600mm
Honda engine: 5.5HP
Size: 1.7*0.9*1m
Weight: 100kg



HW-6L Hand Push High-Pressure Airless Cold Spray Marking Machine

The guide rod of the spray gun holder is designed to be adjustable, and the thickness of the marked lines is uniform and the edges are neat, with low labor intensity and fast construction.

Power: 5.5HP gasoline engine
Work pressure: 8-15mpa
Spray flow rate: 6L/min
Spray width: 100-300mm (single gun)
Gurik imported nozzle
Spray thickness: 0.2-0.4mm
Volume: 1130 × 860 × 880mm
Net weight: 148kg



HW-9L Hand Push High-Pressure Airless Cold Spray Marking Machine



LXD-9L is the fastest hand-push marking equipment in the construction of Jiangsu Lu Xinda cold spray marking machine, suitable for a variety of harsh environments under construction, especially powerful hydraulic system for cold spray construction escort.

Gasoline engine: 5.5PS (Honda)

Pump operation mode: Built in reversing hydraulic pump (imported with original packaging)

Maximum flow: 9L

Spray width: 50-600mm (dual gun) Single gun can reach a maximum of 300mm

Maximum spraying pressure: 23MPA

Maximum marking speed: 13km/h

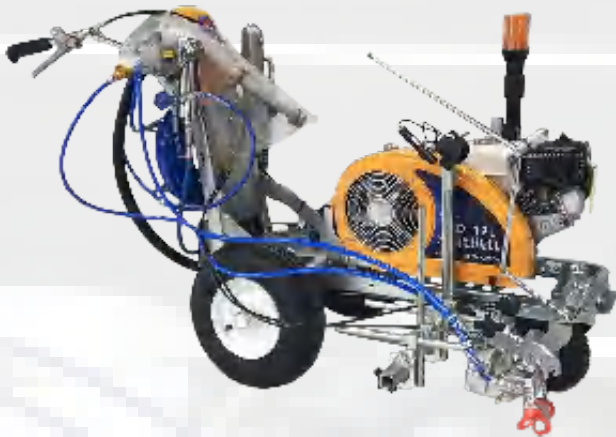
Single gun: 0.048 **Double gun:** 0.033 Graco Imported Nozzles

Aluminum fuel tank capacity: 13L (aluminum heat sink)

Weight: 142kg (German pump) 145kg (Graco pump)

Volume: 1700 × 900 × 1000mm

HW-12L Hand Push High-Pressure Airless Cold Spray Marking Machine



Gasoline engine: 5.5HP (Honda)

Pump operation mode: Built in reversing hydraulic pump

Maximum flow: 12L

Pray width: 50-600mm (double gun) Single gun can reach a maximum of 300mm

Maximum spraying pressure: 23MPA

Maximum marking speed: 13km/h

Single gun: 0.048 **Double gun:** 0.033

Aluminum fuel tank capacity: 13L (aluminum heat sink)

Weight: 140kg

Volume: 1.7 × 0.9 × 1m

Optional: 1.laser pointer 2.self-propelled system

3.illuminated headlights 4.Automatic disconnection system

5.Glass bead bucket 6.Additional two-components available

HW-18L Hand push Car mounted Dual purpose Cold Spray Marking Machine



Gasoline engine driven single piston pump, paint in the machine to form a high-pressure and thus spraying, stable flow of the marked line thickness uniform edge line neat. (Note: Vehicle-mounted type can be equipped with computerized automatic disconnection controller)

Gasoline engine: 9HP

Spraying pressure: 10-18Mpa

Spraying flow: 18L/min

Pray width: 50-600mm (double gun) Single gun can reach a maximum of 300mm

Spraying thickness: 0.2-0.4mm can be sprayed at the same time double gun

Volume: 1700×1000×1100mm

Weight: 215kg

HW-Hand Push Two-component Spraying Machine (Internal mixing)



Features of the marking machine: 1. Advanced shock absorption system 2 Lightweight nozzle fixing device 3 Imported GRACO nozzle 4. Hydraulic oil tank and fan continuous cooling system 5. A material B material static mixing device 6. Automatic quick cleaning device
Main configuration: 1. Honda gasoline engine 2. German imported high-pressure plunger pump (cleaning device) 3 American Graco hydraulic pump (A material pump, B material pump) dual pump

Main configuration: American Graco dual pump, hydraulic engine drive system

Maximum working width: 15-40cm (adjusted according to nozzle)

Maximum working flow rate and pressure: 8.4 * 2L/min, 3300psi

Cleaning pump capacity: 25kg

Engine power: 6.5HP (Honda gasoline engine)

Actual work efficiency: 1.5-3 kilometers per hour

Glass bead spreading system: air pressure spraying, using imported air compressor; Capacity 27kg

Size and weight: 1730 * 1120 * 1170mm **Weight:** 230kg

HW-Hand Push Two-component Spraying Machine (Wagner pump external mixing)



Flow: 9Lpm * 2

Hydraulic pump: German original imported built-in 5.5HP gasoline engine, electric starter

Electric starting spray width: 50-600mm

Work efficiency: 3km/h

Nozzles: GRACO(single gun 0.048) (double gun 0.033)

Glass bead spreading system: air pressure wine spraying, using imported air compressors; Capacity 27kg

Size and weight: 1800 * 1100 * 1150mm

Weight: 224kg

HW-Hand Push Shaking Scraping Vibration Integrated Marking Machine

Two component bump line technical parameters

Engine: Honda gasoline engine, OHV4 stroke air-cooled power 5.5HP

Travel drive mode: automatic hydraulic continuously variable speed

Working speed: 10-15m/min

maximum climbing slope: 15 °

Marking thickness: Horizontal line: 0-3.5mm
Package block: 6.5mm high (adjustable 0-10mm)

Bulge length: controlled by CPU intelligent program for any length

Hopper: pneumatic opening and closing, hydraulic stirring

Paint bucket: capacity 60kg * 2

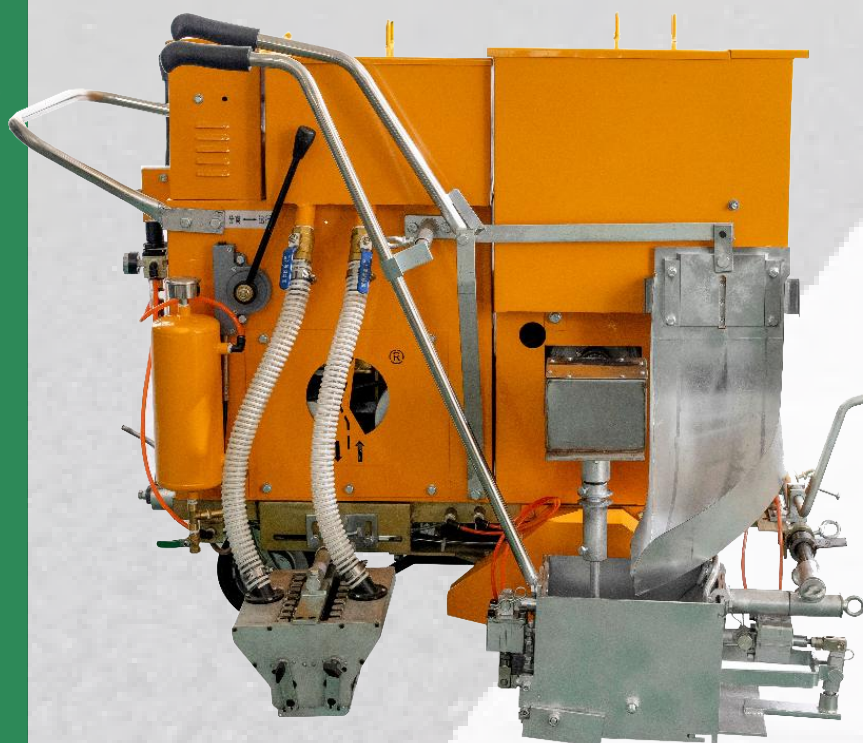
Double glass bead spreader: manual synchronous clutch spreader, with a capacity of 25kg * 2

Rubber wheel: Iron wheel hub, specially made of heat-resistant rubber, with a locator on the rear tail wheel, allowing the vehicle to move forward in a straight line

Marking width: can be selected as 150/200/300/400/450mm (customizable)

Dimensions: length 1300 * width 1000 * height 1170mm (excluding pointers) Net

Net weight: 280kg





Walking Drive –
Eaton USA

Electromagnetic valve
– CAMOZZI Italy

Air compressor
– Jaguar Taiwan

Cylinder – UNIQUC
Japan

Technical parameters for two-component scraping coating

Engine: Honda gasoline engine, OHV4 stroke
air-cooled power 5.5HP

Travel drive mode: automatic hydraulic
continuously variable speed

Working speed: 10-15m/min

Maximum climbing slope: 15 °

Marking thickness: Horizontal line: 0-3.5mm

Hopper: manual opening and closing,
hydraulic stirring

Paint bucket: capacity 60kg * 2

Double glass bead spreader: manual
synchronous clutch spreader, with a capacity
of 25kg * 2

Rubber wheel: Iron wheel hub, specially
made of heat-resistant rubber, with a locator
on the rear tail wheel, allowing the vehicle to
move forward in a straight line

Marking width: can be selected as
150/200/300/400/450mm (customizable)

Dimensions: length 1600mm * width
1040mm * height 1400mm (excluding
pointers)

Net weight: 296kg



HW-Hand Push Two-component Scraping And Marking Machine

HW-Hand Push Two-component 150 Dump Coating Machine

Our company's advanced two-component machine technology greatly improves construction efficiency. The mixing system adopts mechanical transmission electronic clutch, and the landing knife can adapt to different road conditions. The glass bead spreader is equipped with a speed regulation buffer device, which is characterized by high quality, fast speed, flexible operation, and easy maintenance of two-component construction.

- Marking thickness:** 1.2-2.5mm adjustable
- Coating bucket capacity:** 100kg
- Glass bead bucket capacity:** 15kg
- Marking device:** manual scraping hopper
- Standard configuration of hopper:** 15cm/20cm
- Optional hopper:** 30cm/40cm/45cm
- Size and weight:** 1220x850X1070mm, 105kg
(excluding buckets, boxes, and counterweights)



Small 150 dump coating machine is a special equipment for two-component zebra marking. This equipment can adjust the rotating speed of the coating rod at any time according to the different viscosity of the paint, and also maximize to meet the needs of various complex conditions of the construction.



- Engine:** 6.5HP gasoline engine (4.8kw)
- Working Width:** Maximum 50cm
- Glass bead equipment:** Metering bead dispenser
- Wheel:** Solid rubber, 200*50mm
- Size:** 1.2*1.18*1.16m
- Weight:** 175kg

HW-Hand Push Two-component Dot Coating And Marking Machine



Engine: Honda GX 160 gasoline engine, 5.5HP

Gasoline capacity: 2.9L

Electronic system: walking 48DC, computer 12VPC, pump 24VDC

Compressor: displacement 0.21m³/min

Working air pressure: 0.8PA

Solidification monitoring system: imported from Germany, EGE flow electronic controller

Walking drive: Hydraulic walking drive system

Walking speed: 14km/h

Maximum climbing slope: 15 °

Motor flow rate: 80ml

Bucket capacity: approximately 100kg

Curing agent capacity: approximately 1.25kg

Cleaning agent capacity: approximately 0.012m³

Hybrid system: 98:2, fluid with curing agent pump

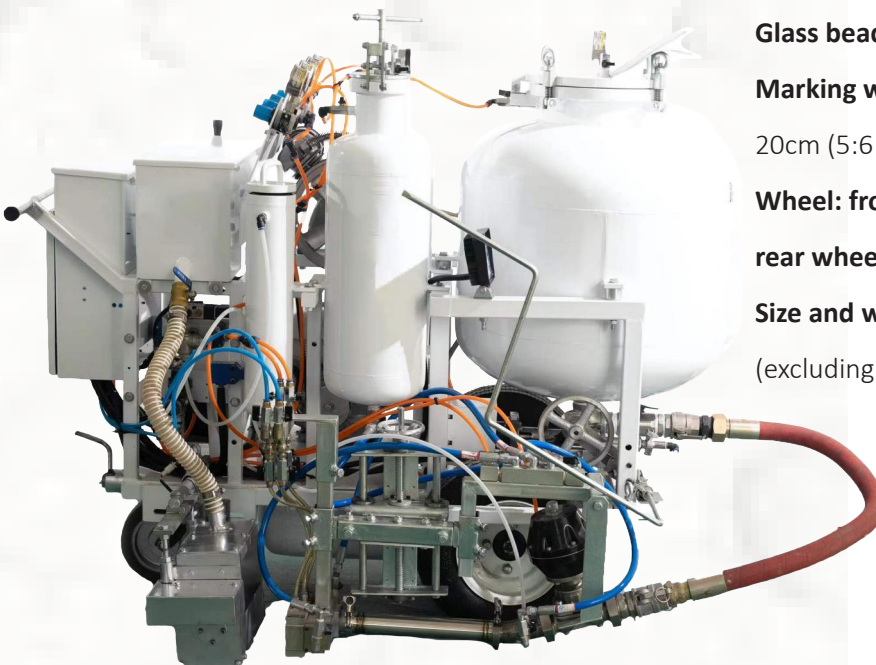
Glass bead equipment: 1:16 gravity spreader

Marking width: can be selected as 150cm (4:5), 20cm (5:6 or 6:6), 400cm (10:11)

Wheel: front wheel: pneumatic tire 4.00x84PR

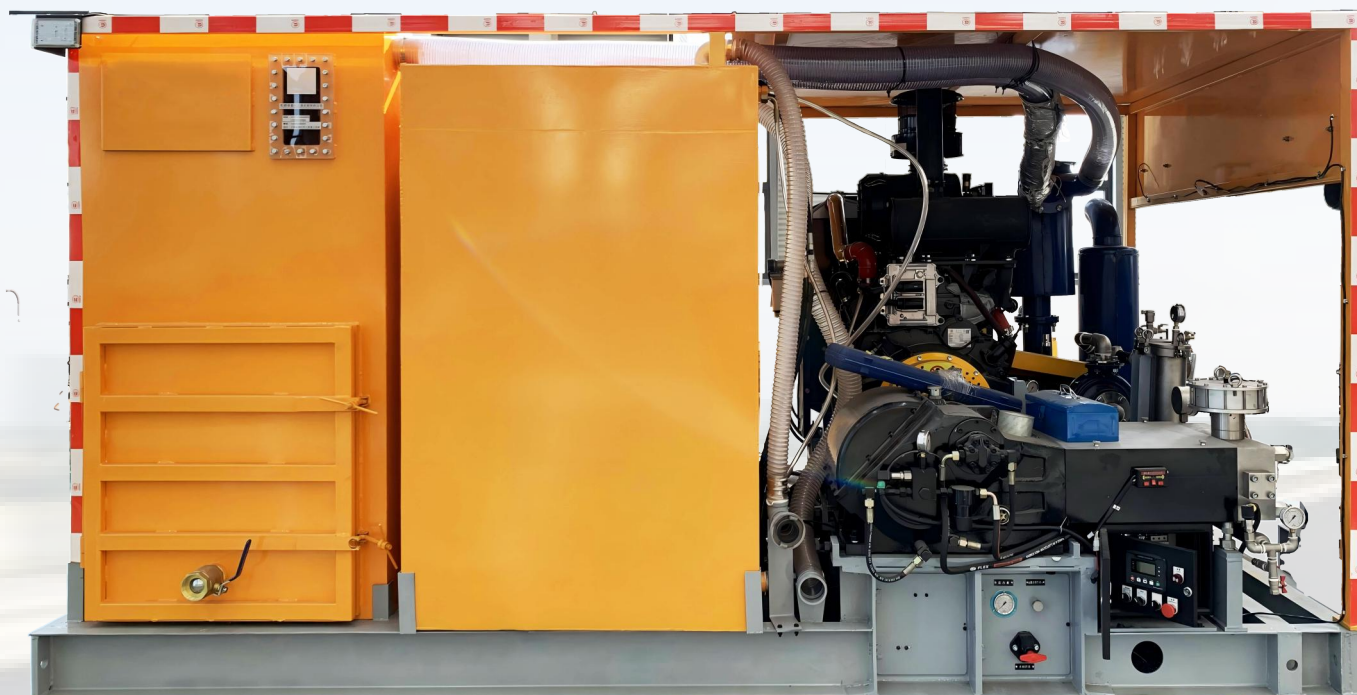
rear wheel: solid rubber wheel d=200mm

Size and weight: 1400mm * 1200mm * 1300mm (excluding pointers), 370kg(with batteries)



HW-1600kg 36L Recycling High Pressure Water Removal Machine

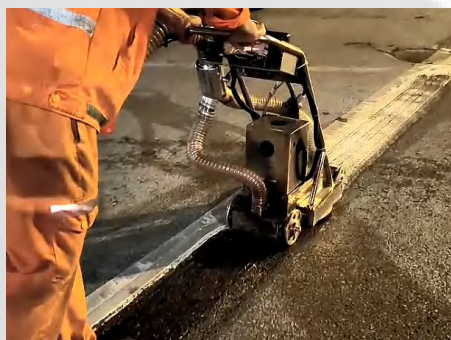
This device causes minimal damage to the road surface. It simultaneously removes road markings and recovers the resulting debris, resulting in high efficiency and rapid processing of large road marking areas. It thoroughly removes markings and can precisely clean dirty, worn markings, leaving them looking brand new, by adjusting the pressure. It is suitable for a wide range of road surfaces and road marking types, making it an ideal choice for road marking removal.



| | | | |
|----------------------------|---|--|---|
| Engine | Weifang Huadong six-cylinder national second engine | Water-slag separation, water drainage, solid slag is hydraulic self-unloading function of forced lubrication system and oil cooling system imported safety blasting diaphragm high-pressure table (imported), full computer monitoring instrumentation box | |
| Power | 173kw | | |
| Rotational speed | 1800r/min | | |
| Pump speed | 530r/min | Filter | Double-layer stainless steel vertical filter secondary filtration |
| Pressure | 160mp | Protection systems | Includes water supply low voltage protection system |
| Flux | 36L / min | Recovery system | SSA vacuum pump Pressure - 0.4 bar |
| Plunger Diameter | 20mm(Plunger material is ceramic) | water storage | Fresh water tank 3.7T, sewage tank 4T (customizable) |
| Plunger stroke | 85mm(Plunger material is ceramic) | Size | 4.1m*2m*2m (customizable) (standard with monogrammed frame) |
| High Pressure Seals | Inlet molded seals | Weight | About 5T |
| Booster pump | Front mounted booster pump Maximum 6kg boost | Water piping system | Stainless Steel & Buckled Hose |

HW-2000kg 48L Recycling High Pressure Water Removal Machine

| | | | |
|----------------------------|--|--|---|
| Engine | Weichai four-cylinder national three emissions | Water-slag separation, water drainage, solid slag is hydraulic self-unloading function of forced lubrication system and oil cooling system imported safety blasting diaphragm high-pressure table (imported), full computer monitoring instrumentation box | |
| Power | 154kw | | |
| Rotational speed | 2200r/min | | |
| Pump speed | 370r/min | Filter | Double-layer stainless steel vertical filter secondary filtration |
| Pressure | 200mp | Protection systems | Includes water supply low voltage protection system |
| Flux | 48L / min | Recovery system | SSA vacuum pump Pressure - 0.4 bar |
| Bear | NSK Japan | water storage | Fresh water tank 3.7T, sewage tank 4T (customizable) |
| Plunger | Carbide 19.05 | Size | 4.1m*2m*2m (customizable) (standard with monogrammed frame) |
| High Pressure Seals | Inlet molded seals | Weight | About 5T |
| Booster pump | Front mounted booster pump Maximum 6kg boost | Water piping system | Stainless Steel & Buckled Hose |



Airport Glue Removal Vehicle

Degumming trucks are equipped with efficient degumming equipment, which can quickly remove the glue layer on the surface of the object, greatly improving the efficiency of the degumming work. The modern debinding trucks are usually equipped with vacuum recycling system, which can effectively collect the sewage and glue chips generated in the process of debinding, and reduce the pollution to the environment. Applicable to a variety of scenes and materials of the degumming work, whether it is the airport runway or the surface of industrial products, can be effectively degumming treatment.



Computer Board Empowerment Efficiency & Intelligence Both Enhancement



In the field of road construction, a pioneering new technology of high-pressure water stripping line is equipped with advanced computer boards, setting off a wide range of concerns and profound changes in the industry. The computer board, with its excellent and extraordinary functions, has reshaped the high-pressure water removing line operation process in all aspects, and brought unprecedented intelligent and efficient experience for the whole industry.

Actuator arrow keys

For precise control of the direction of operation of the de-watering equipment, ensuring that the spray nozzles or de-watering components can be flexibly aligned with the marking position.

Monitor Power Supply

Supply power to the equipment operation status monitoring system to ensure real-time collection, transmission and display of key equipment operation data.

Emergency stop

When there is a sudden failure of the equipment, a potential safety hazard or operational deviation, it can instantly cut off the power of the equipment power and control system power supply, emergency braking equipment operation.

Shut down

When completing the work of removing lines or needing to temporarily interrupt the task, orderly shut down the various working modules of the equipment, and safely cut off the related power and control system, so as to avoid idling and energy consumption of the equipment.

Speedometer

Accurately record equipment miles traveled, measure line removal lengths, account for workloads, and plan for consumable usage.

Alarm Preview

Early indication of potential equipment failure risks or abnormal conditions

Display screen

Visualize the operating parameters, working status, alarm information and operation interface of the equipment.

Language switch

Facilitates accurate operation and understanding of equipment information, reducing the risk of operational errors due to language barriers

Parameter setting

Flexible adjustment of the operating parameters of the equipment according to the different tasks and working conditions of the line removal requirements

Solenoid Valve Switch

Control the solenoid valve on and off, and then realize the accurate control of water flow, air pressure and other related media in the water wire removal equipment

Operating mode

Flexible switching of equipment operation according to different delineation tasks and environments

Set up

Individualized adjustment of the functions and parameters of the equipment according to the actual operational requirements

Pressure solenoid valve

Regulates the pressure of water flow or other media in water removal line equipment by precisely controlling pressure changes

Trolley power supply

Provides power for the cart's drive system, control system, and related equipment such as computer boards

AIRPORT RUBBER REMOVAL TECHNICAL PARAMETERS

AIRPORT RUBBER REMOVAL TECHNICAL PARAMETERS

REMOVING WIDTH: 30CM

ENGINE: WEICHAH DIESEL ENGINE; POWER: 255KW;

ROTATION RATE: 1800R/MIN

PUMP SPEED: 500 TIMES PER MINUTE

PRESSURE: 250MPA (2500KG)

FLOW: 46L/MIN

PLUNGER: CEMENTED CARBIDE 19.05

FORCED LUBRICATION SYSTEM AND OIL COOLING SYSTEM, IMPORTED HIGH-QUALITY SAFETY

RUPTUREDISC

FULL-COMPUTER MONITORING INSTRUMENT BOX: OIL TEMPERATURE ALARM, WATER TEMPERATURE ALARM, DIESEL ENGINE SPEED, WATER PRESSURE, VOLTAGE DISPLAY WORKING TIME, COMPLETE MACHINE FAULT DISPLAY, WATER PRESSURE PRECISE PRESSURE REGULATION

BOOSTER PUMP: FRONT BOOSTER PUMP, MAXIMUM 6KG BOOSTER

FILTER: DOUBLE STAINLESS STEEL VERTICAL FILTER, SECONDARY FILTRATION

WATER SUPPLY PROTECTION SYSTEM: INCLUDING WATER SUPPLY LOW PRESSURE PROTECTION SYSTEM

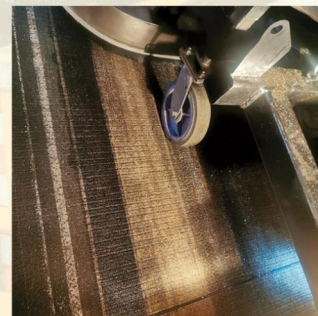
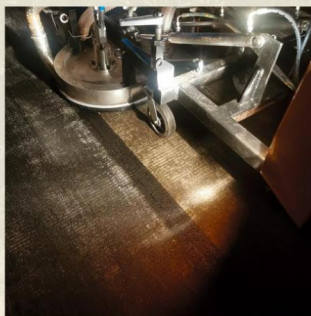
RECOVERY SYSTEM: SSA VACUUM PUMP, PRESSURE -0.4BAR,
(SOLID-LIQUID SEPARATION CAN BE ACHIEVED)

WATER TANK: CLEAN WATER 6T (CUSTOMIZED), AND SEWAGE TANK IS CUSTOMIZED ACCORDING TO TRUCK MODEL

OIL TANK: 250L

VEHICLE TRAVEL CONTROL: CONSTANT SPEED TRAVEL CONTROLLER (WITHOUT HUMAN CONTROL), THE MINIMUM SPEED IS 5 M/MIN, AND IT CAN BE CRUISED AT A CONSTANT SPEED WITH THE ELECTRONIC GEAR SHIFT OF THE VEHICLE

THE REMOTE MONITORING SYSTEM FOR THE CAB OF THE VEHICLE (THE DRIVER CAN MONITOR THE REMOVAL OF THE MARKING LINE OF THE LINE REMOVAL VEHICLE IN REAL TIME THROUGH VIDEO IMAGE IN THE CAB) (OPTIONAL)



MAIN CONFIGURATION - REMOVING RUBBER

| category | particulars | QTY | Brand | Description |
|--|-------------------------------------|---------------|---------------------------------|---|
| power system | diesel engine | 1 | Weichai Deutz | 255KW Construction machinery supporting electric jet engine with ECU control system |
| | air compressor | 1 | | Weichai Daoyitz, custom-made air compressor, small size, high efficiency |
| | fuel tank | 1 | Heavsty | The thickened customized oil tank has a capacity of about 250L |
| high-pressure components | three-throw ram | 1 | German WIKA | Pressure: 1400BAR Flow: 85L/Min Imported materials, technical processing |
| | pressure meter | 1 | | |
| | Pneumatic pressure regulating valve | 1 | Japan | |
| | Explosion-proof seat | 1 | | |
| Transmission parts | coupling shaft coupling | 1 | German CENTRE | Germany imported elastic coupling, product quality is stable and reliable |
| | water filter | 2 | LVWEI | Well-known brands in China's filter industry |
| | booster pump | 1 | South pump industry | Export brand, stable and reliable performance |
| control system | control cabinet | 1 | Heavsty | Customized imported controller, strong ability to expand, stable performance, powerful, simple to use, IP65 protection |
| chassis system | chassis | 1 | Heavsty | The bottom Angle of diesel engine and pump installation is processed by large milling machine to ensure the flatness of installation |
| Suction system | vacuum pump | 1 | Sino-Japanese joint venture SSR | We can form a suction pressure of-0.4 to ensure perfect results |
| rubber removal head | | 1 | imported | <ol style="list-style-type: none"> 1. Max pressure: 1400BAR 2. Max flow: 85L/MIN 3. Working width: 1m 4. weight: about 100KG 5. RPM: about 1500-2000RPM , Adjustable according to the Angle of the jet rod; There are 48 nozzles. 6. Main material: special stainless steel; 7. Sealing form: engineering plastic seal; with protective cover and hand push rod; 8. Connection thread: 1- 1/8UNF internal thread; |
| separation system | 304 Stainless steel water tank | 2 | Heavsty | Clean water tank about 6 tons, sewage tank can be customized |
| | Vacuum separation technique | 1 | WINTER GRUN | Water and slag are recycled simultaneously |
| | Water and slag air filter | 1 | WINTER GRUN | |
| Vehicle walking system (Turtle device) | Model: New type JAC K5L | | | |
| | Transmission gear | engine speed | Vehicle gear | speed |
| | high gear | Idling 770R/M | first gear | 75M/MIN |
| | low gear | Idling 770R/M | first gear | 3±0. 1M/MIN |
| | low gear | 1000R/MIN | first gear | 40. 1M/MIN |
| | low gear | 1500R/MIN | first gear | 5.8M±0. 1M/MIN |
| The current ratio 23.75 | | | | |

ROAD MARKING REMOVAL TECHNICAL PARAMETERS

REMOVING WIDTH: 30CM

ENGINE: WEICHAH DIESEL ENGINE; POWER: 255KW; ROTATION RATE: 1800R/MIN

PUMP SPEED: 500 TIMES PER MINUTE

PRESSURE: 250MPA (2500KG)

FLOW: 46L/MIN

PLUNGER: CEMENTED CARBIDE 19.05

FORCED LUBRICATION SYSTEM AND OIL COOLING SYSTEM,
IMPORTED HIGH-QUALITY SAFETY RUPTURE DISC

FULL-COMPUTER MONITORING INSTRUMENT BOX: OIL

TEMPERATURE ALARM, WATER TEMPERATURE ALARM,

DIESEL ENGINE SPEED, WATER PRESSURE, VOLTAGE DISPLAY WORKING TIME, COMPLETE MACHINE FAULT DISPLAY, WATER PRESSURE PRECISE PRESSURE REGULATION

BOOSTER PUMP: FRONT BOOSTER PUMP, MAXIMUM 6KG BOOSTER

FILTER: DOUBLE STAINLESS STEEL VERTICAL FILTER, SECONDARY FILTRATION

WATER SUPPLY PROTECTION SYSTEM: INCLUDING WATER SUPPLY LOW PRESSURE PROTECTION SYSTEM

RECOVERY SYSTEM: SSA VACUUM PUMP, PRESSURE -0.4BAR,
(SOLID-LIQUID SEPARATION CAN BE ACHIEVED)

WATER TANK: CLEAN WATER 6T (CUSTOMIZED), AND SEWAGE TANK IS CUSTOMIZED ACCORDING TO TRUCK MODEL

OIL TANK: 250L

VEHICLE TRAVEL CONTROL: CONSTANT SPEED TRAVEL CONTROLLER (WITHOUT HUMAN CONTROL), THE MINIMUM SPEED IS 5 M/MIN, AND IT CAN BE CRUISED AT A CONSTANT SPEED WITH THE ELECTRONIC GEAR SHIFT OF THE VEHICLE

THE REMOTE MONITORING SYSTEM FOR THE CAB OF THE VEHICLE (THE DRIVER CAN MONITOR THE REMOVAL OF THE MARKING LINE OF THE LINE REMOVAL VEHICLE IN REAL TIME THROUGH VIDEO IMAGE IN THE CAB) (OPTIONAL)



MAIN CONFIGURATION - ROAD MARKING RUBBER REMOVAL

| Type | Item | QTY | Brand | Description |
|---------------------------|-------------------------------------|-----|------------------------------------|---|
| Dynamical system | Diesel Engine | 1 | WEICHAI | 255KW construction machinery equipped with electronic fuel injection engine and ECU control system |
| | Compressor | 1 | WEICHAI | Weichai Deutz customized air compressor, compact size, high efficiency |
| | Oil Tank | 1 | Own made | Thickened custom fuel tank with a capacity of approximately 250L |
| High Pressure Components | Three plunger pump | 1 | | Pressur: 2500bar |
| | Pressure gage | 1 | German WIKA | Flow 46L/min, Imported materials, technical processing |
| | Pneumatic pressure regulating valve | 1 | Japan | |
| | Explosion proof seat | 1 | | |
| Transmission components | coupling | 1 | German Centra | German imported elastic couplings with stable and reliable product quality |
| | Water Filter | 2 | LIVIC | Famous brands in the domestic filter industry in China |
| | Booster pump | 1 | CNP | Chinese export brand with stable and reliable performance |
| Control System | Control cabinet | 1 | Own made | Customized imported controller with strong scalability, stable performance, powerful functions, easy to use, and IP65 protection |
| Chassis system | chassis | 1 | Own made | The bottom angle of diesel engine and pump installation is processed using a large milling machine to ensure installation flatness. The large chassis is hot-dip galvanized to improve anti-corrosion performance |
| Recovery System | vacuum pump | 1 | Sino Japanese Joint Venture SSR | Can generate a recovery pressure of -0.4, ensuring perfect results |
| actuator | Line removal head | 1 | Imported and domestically produced | Max Pressure: 250Mpa |
| | | | | Max Flow: 46L/min |
| | | | | Remove width: 30cm |
| | | | | Weight: about 50kg |
| | | | | rotation rate: 1500-2000RPM |
| | | | | Sparry nizzles: 12 or 24pcs |
| | | | | Main material: special stainless steel |
| | | | | Sealing form: engineering plastic sealing |
| | | | | Equipped with protective cover and hand push rod |
| | | | | Connection thread: 1-1/8UNF internal thread |
| separation system | 304 stainless steel water tank | 2 | Own made | Clean water tank 6T, Seweage water tank 7T (Customized) |
| | Vacuum separation technology | 1 | Winter grun | Technologies to ensure the separation of water and solid substances |
| | Water slag air filter | 1 | Winter grun | |
| Automobile walking system | Low speed walking gear | 1 | Own made | Customized according to your truck |

HW-23CX Road Marking Removal Machine (With Dust Recycling)

Advantages:

1. The combination of inflatable wheels and comfortable push handles can eliminate vibration and relieve fatigue.
2. The improved air filtration system can better extend the working time and the service life of the engine.
3. Using a centrifugal clutch to start and stop cutting tools is one of the safer devices on the market.

Power: Longxin 30p gasoline engine

Fuel consumption: 7-8L/H (with 95 # gasoline)

Speed: 3600rpm

Excluding line width: 22cm

Depth of wire removal: Adjust according to the needs and ground conditions, generally not exceeding 1mm (0-3mm) per adjustment

Clearance speed: approximately 1500-2000m²/day

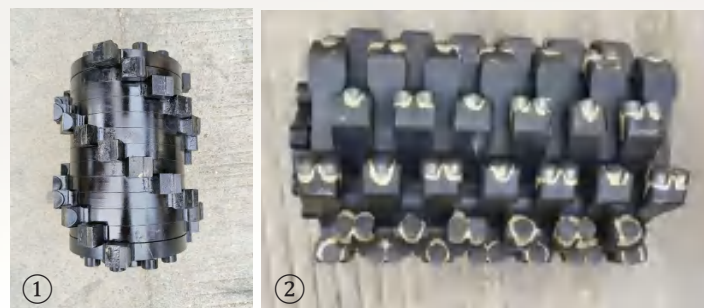
Weight: Bare 180kg

- ① Polymer gold grinding head 34kg, (6 blades/piece) set of 13 pieces, 100000 m²
- ② Welding alloy grinding head 26kg (6 blades/piece), set of 42 pieces, 200000 m²
- ③ Full alloy grinding head 30kg (12 blades/piece), set of 42 pieces, 10000 square meters

Size and weight: 1500 * 725 * 1150mm

This machine is equipped with a dust-absorbing and environmentally friendly device

The HW-23CX wire removal machine is the best wire removal machine in the history of mechanical wire removal machines. The characteristics of this machine are low failure rate, high efficiency, no need to replace bearings, good road polishing effect, and easy maintenance. The machine has a variety of blade modes, which can meet various road surface requirements.



HW-Dry Mechanical Recycling Device



Rated power of diesel engine: 28KW, speed 2200r/min

Vacuum device: flow rate 11.16m³/min, pressure increase-44.88kpa

Diesel tank: 0.07m³

Three sets of independent dust filters with self-cleaning and detachable function.

Recycling bin: 3m³

Length, width, and height: 2860 * 2000 * 2080mm

Weight: 1.6 tons

The Mechanical Wire Recovery Equipment has three independent dust filters with self-cleaning drop down movable and removable features. This not only reduces dust and noise in the on-site environment, but is also safer and more efficient.



HW-D390 Road Marking Removal Machine

HW-Road Vacuum Cleaner

Engine:13HP Honda gasoline engine or 14HP Paragon gasoline engine

Working width:225mm

Working thickness:Adjustable according to needs and ground conditions, generally not more than 3mm

Number of cutters:78 pieces

Knives: imported super alloy special blade

Removal rate: 800m²-1200m²/day

Equipped with knives:Diamond Hob

Cooling lubrication method:water-filled

Removes markings with good leveling, no dust, and virtually no damage to the pavement.

The D-390 Wire Remover is the best mechanical wire remover in the history of mechanical wire removers, which is characterized by accessibility, high efficiency, good road sanding and easy maintenance. The cutter head of the machine adopts imported super alloy blades.



HW-900 Road Marking Removal Machine

The design concept and manufacturing process of the HW900 hot melt cold paint dual-purpose old line cleaning machine are first-class, and its principle is to strike and polish the plane with centripetal force. The blade moves on the blade shaft and generates centripetal force through high-speed rotation. The blade hits the surface of the cleared marking to achieve the purpose of removal. Its outstanding advantage lies in the fact that the cutting edge does not come into hard contact with the processed surface, causing minimal damage to the treated surface. It is mainly used for the removal of old hot melt and cold paint markings, and has the characteristics of high efficiency, low damage, and easy maintenance.

Engine:9.0HP (HONDA) Honda gasoline engine with speed up to 3600r/min

Working width:220mm

Working thickness:adjusted according to the situation of road surface, range:0-4mm

Removal rate: 300-500m²/day

Working life of Cutter:an remove1500-3000m² road marking paint

Number of barrel shafts: 4 shafts (shafts are treated with special materials)

Weight:110kg

Size and weight: 970×600×1000mm 115kg



HW-1050 Road Marking Removal Machine

The HW1050 hot melt old line cleaning machine is a specialized equipment used to remove damaged, cracked, discolored and other old hot melt markings. The engine is used to drive the polishing head to rotate at high speed. Under the action of centrifugal force, the polishing head rubs in with the protruding parts of the road surface, clearing the old lines. The machine uses an imported original gasoline engine, with an ultra durable hard alloy polishing head, ensuring the quality of the equipment. It can be adjusted according to the situation of the road surface and markings, and has the characteristics of good polishing performance, fast speed, and simple operation and maintenance.

Engine:Honda GX340 4-stroke air-cooled gasoline engine

Operating method:Throttle switch on the handlebar, sanding head up/down lever on the frame, sanding force regulator

Adjustment range of grinding force: strong, medium, weak stepless adjustment

Rubber wheel: cast iron wheel stock, wear-resistant rubber special, the rear wheel is set up with double wheels and single vertical axle to strengthen the wheel

Grinding head: three independent rotating grinding head composition, are embedded with imported wear-resistant tungsten carbide, Width 180mm

Grinding head life: 20,000-30,000m

Size and weight: 1200 x 650 x 980mm 198kg



HW-Booster Car (Gasoline)



Engine power: 5.5HP
Climbing slope: ≤ 60 °
Forward speed: 15km/h
Backward speed: 10km/h
Size and weight: 1500 * 600 * 1200mm 140kg

1. The right side of the equipment is equipped with high-intensity lighting headlights, which can be used for construction in various low visibility conditions;
2. A dual pedal system that is easy to operate, and when connected to the marking machine for construction, only control the pedal to move forward and backward, which is convenient and fast;
3. Adopting a Japanese Honda 5.5HP gasoline engine, the engine is compact, lightweight, reliable in performance, and easy to start;
4. The braking device can ensure stable operation of the equipment during construction on roads with steep slopes;
5. Why do we need to walk if we can drive?

HW-Waterline Car

Simultaneously setting three benchmark waterlines

Maximum width: 9 m
Volume: 1140x730x1000mm
Net weight: 66kg



HW-Road Drying Machine

Engine: Gas turbine engine 350kw

Fuel: diesel fuel

Batteries: 12V

Thermostat: The thermostat can maintain a constant temperature of 350-550° for a long period of time.

Working width: 15cm 30cm 40cm

Size and weight: 1650*500*1000mm 100kg



HW-Primer Blowing Machine



HW-II Primer Machine



| | | |
|-------------------------|--|--|
| Power | Honda 5.5HP gasoline engine or 6.5HP imported Bailiton gasoline engine | Honda 5.5HP gasoline engine or 6.5HP imported Bailiton gasoline engine |
| Maximum spray pressure | 0.5Mpa | 0.5Mpa |
| Wind turbine | Turbocharging | _____ |
| Wind power | The wind speed can be adjusted by controlling the throttle valve | _____ |
| Spray width | 100-450mm | 100-450mm |
| Safety pressure control | Maintain stable pressure and set up a one-way ball valve | Maintain stable pressure and set up a one-way ball valve |
| Walking speed | 65-70m/min | 65-70m/min |
| Size and weight | 1300 * 800 * 920mm 100kg | 1230*800*920mm 85kg |

HW-Booster Car (Electric)

Engine power: 500W
Battery: 48V30A
Climbing slope: ≤ 60 °
Forward speed: 10-12km/h
Backward speed: 5-8km/h
Size and weight: 1100 * 800 * 1060mm
 Weight 70kg (12kg battery)



- ① The right side of the equipment is equipped with high-intensity lighting headlights, which can be used for construction in various low visibility conditions;
- ② The left side of the equipment is equipped with engineering warning lights to improve safety;
- ③ A convenient dual pedal system, which can be connected to the marking machine for construction by simply controlling the pedal to move forward and backward, making it convenient and fast;
- ④ Brake device, dual wheel electronic brake

HW-Pre-Marking Robot

- Full constellation and full freq**
- Highly adaptable**
- Multifunctional**
- Longevity and High Speed**
- Supports multiple file formats**



HW Pre Marking Robot is based on RTK real-time dynamic differential positioning technology, combined with high-precision integrated navigation system, receiving satellite signals. The robot uses advanced data fusion path algorithm and differential correction data to achieve centimeter or even millimeter level accuracy in its own positioning results.

HW-High Pressure Road Blower



HW-High Pressure Road Sweeper



HW-High Pressure Road Blowing And Cleaning Machine



| | | | |
|---|--|---|---|
| | Mainly used in marking construction before the cleaning work, gasoline engine power, wind pressure is strong, the body is equipped with a bottom oil drum device rack, save time and energy, improve efficiency. | It can be used to clean the cement slurry, mud and floating soil on the road surface, and also can be used to remove the cold-painted marking lines, and the sweeping strength can be adjusted, which enhances the adhesion between the marking lines and the ground. | With a sweeping strength adjustment device, strong, medium, weak stepless adjustment, the use of this equipment greatly improves the efficiency of pre-construction sweeping work, is the construction of high demand for road surface must be a special product. |
| Engine | 5.5HP imported Honda gasoline engine | 5.5HP imported Honda gasoline engine or 6.5HP imported Paragon gasoline engine | 5.5HP imported Honda gasoline engine or 6.5HP imported Paragon gasoline engine |
| Adjustable range of sweeping force | _____ | Strong, medium and weak stepless adjustment | Strong, medium and weak stepless adjustment |
| Turbine wheel | Turbocharged wind turbine | _____ | Turbocharged wind turbine |
| Wind power | Adjustable wind power by throttle control | _____ | Adjustable wind power by throttle control |
| Grips | Liftable Adjustment | Liftable Adjustment | Liftable Adjustment |
| Wire wheel | _____ | Abrasion-resistant soft wire brush | Abrasion-resistant soft wire brush |
| Rubber tire | Iron wheels with special wear-resistant rubber | Iron wheels with special wear-resistant rubber | Iron wheels with special wear-resistant rubber |
| Size&weight | 1180*680*880mm 55kg | 1170*600*850mm 80kg | 1170*630*870mm 90kg |



HEAVSTY TRANSPORTATION TECHNOLOGY(JIANGSU) CO.,LTD.

Beifengkou Road,Shangdang Town,Dantu Dist,Zhenjiang,
JiangSu Province,China

 +86 19802598888

 fuhao@heavstymarking.com

 www.heavstyroad.com

