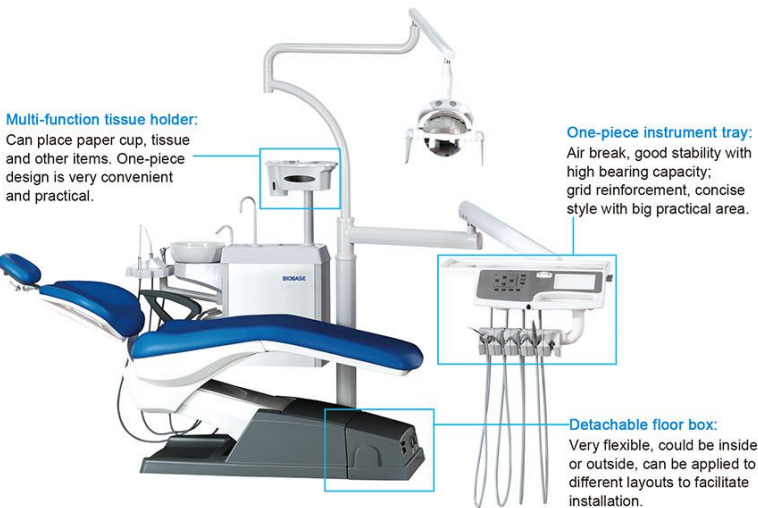


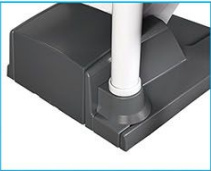
Dental Chair



Technical Parameters:

Model	BKMD-A03		
Computer-controlled dental chair	1 set	Multi-function tissue holder	1 set
High vacuum suction and Saliva ejector system	1 set	Multi-function Pedal switch	1 set
		Operator stool	1 set
Three-way syringe(cold/hot/)	2 pcs	High speed handpiece connector	2 sets
Operating light	1 set	Low speed handpiece connector	1 set
X-ray viewer	1 set	24V DC mute motor	2 pcs
Automatic bowl rinsing and cup filling	1 set	Detachable ceramic spittoon	1 set

Product Feature:



**Floor-standing post:**  
The movement of light and instrument tray will not affected by others, making the whole machine more stable and making the treatment process more smooth.



**Extremely low chair position:**  
The lowest position is lower than 37cm, very convenient for the elderly, children, pregnant women and the disabled, easier for doctors to operate.



**Rotatable metal side box:**  
The side box can be rotated outside, having sufficient space to cooperate with nurses, environmentally friendly metal material with high rigidity, the color will not change or fade.



**Independent adjustment system for handpieces:**  
A handpiece corresponds to a knob, the operation is more accurate, more user-friendly and more flexible.



**Double-bottle water supply:**  
Reduce the frequency of adding water to make the treatment more smooth.



**Rotatable spittoon:**  
Can be rotated with the side box to facilitate spit and gargle; can be easily removed to clean and disinfect



**Comfortable operator's stool:**  
Ergonomically designed, noiseless, convenient and adjustable.

Optional Accessories:

Imported/Domestic high speed turbine handpiece	2 pcs	Negative pressure suction system	1 set
Imported/Domestic low speed handpiece	1 piece	Intraoral camera system	1 set
Built-in scaler	1 set	Oilless Air Compressor	1 set
LED curing light	1 set		

Optional Configuration:



**Double armrests:**  
The armrests will rotate with backrest, allowing patients to grab during the entire process.



**Three memory keys:**  
Just press one key to operate the dental chair in place, convenient and quick.



**Top-mounted instrument tray:**  
The bars can be easily pulled out and put back without any traction force, easy for cleaning and operation.



**Six bulbs LED operating light:**  
Induction adjustable brightness, with sensor, fashionable and convenient.



**Halogen operating light:**  
Closer to natural light, no glare, eye protection without irritation.



**Glass spittoon:**  
beautiful and bright, easy to clean and disinfect.



**Rack for intraoral camera system:**  
The original special rack is more convenient to use.



**Deluxe leather operator stool:**  
Wear-resistant leather with ergonomic design, noiseless, comfortable and adjustable.

Water Purifier Consumables

Model Type	PP filter	Active carbon filter	100 GPD RO membrane	Deionized purify column	Granular active carbon filter	300 GPD RO membrane	400 GPD RO membrane	Active carbon block filter	12L purify column (resin)	0.2um PES terminal filter	12L ultra purify column (imported resin)	Ultra purify column (imported resin)	MWCO 5000D UF ultrafiltration (import)	Dual wavelength (165nm UV254nm UV280nm) (import)
Replacement term/set(months)	2-6	4-6	12-24	about 1000 liters pure water/set	2-6	12-24	12-24	2-6	about 2000 liters pure water/set	2000 liters pure water/set	about 2000 liters pure water/set	/	/	about 9000 hours
SCSL-HI(15UH)	1	2	1	/	/	/	/	/	/	/	/	/	/	/
SCSL-HI(30UH)	1	2	2	/	/	/	/	/	/	/	/	/	/	/
SCSL-HI(15UH)	1	2	1	/	/	/	/	/	/	/	/	/	/	/
SCSL-HI(30UH)	1	2	2	3	/	/	/	/	/	/	/	/	/	/
SCSL-HV(45UH)	1	/	/	/	1	1	/	1	/	/	/	/	/	/
SCSL-HV(63UH)	1	/	/	/	1	1	1	1	/	/	/	/	/	/
SCSL-HV(94UH)	1	/	/	/	1	2	/	1	/	/	/	/	/	/
SCSL-HV(125UH)	1	/	/	/	1	/	2	1	/	/	/	/	/	/
SCSL-HV(45UH)	1	/	/	/	1	1	/	1	/	1	1	2	/	/
SCSL-HV(63UH)	1	/	/	/	1	/	1	1	/	1	1	2	1	/
SCSL-HV(94UH)	1	/	/	/	1	/	1	1	/	1	1	2	1	/
SCSL-HV(125UH)	1	/	/	/	1	2	/	1	/	1	1	2	1	/
SCSL-VI(63UH)	1	/	/	/	1	/	1	1	/	1	1	2	1	/
SCSL-VI(94UH)	1	/	/	/	1	/	1	1	/	1	1	2	1	/
SCSL-VI(125UH)	1	/	/	/	1	/	2	1	/	1	1	2	1	/
SCSL-VI(45UH)	1	/	/	/	1	1	/	1	/	1	1	2	1	/
SCSL-VI(63UH)	1	/	/	/	1	/	1	1	/	1	1	2	1	/
SCSL-VI(94UH)	1	/	/	/	1	/	1	1	/	1	1	2	1	/
SCSL-VI(125UH)	1	/	/	/	1	2	/	1	/	1	1	2	1	/
SCSL-VI(45UH)	1	/	/	/	1	/	1	1	/	1	1	2	1	/
SCSL-VI(63UH)	1	/	/	/	1	/	1	1	/	1	1	2	1	/
SCSL-VI(94UH)	1	/	/	/	1	/	1	1	/	1	1	2	1	/
SCSL-VI(125UH)	1	/	/	/	1	/	2	1	/	1	1	2	1	/
SCSL-HX(45UH)	1	/	/	/	1	/	/	1	/	1	1	2	1	/
SCSL-HX(63UH)	1	/	/	/	1	/	1	1	/	1	1	2	1	/
SCSL-HX(94UH)	1	/	/	/	1	/	2	1	/	1	1	2	1	/
SCSL-HX(125UH)	1	/	/	/	1	/	/	1	/	1	1	2	1	/

Water Distiller

Electric-heating Water Distiller



Features:

- \* Stainless steel material, adopt stamping and welding technology.
- \* Corrosion and ageing resistance, easy to operate, safe and durable.

Technical Parameters:

Model	WD-5	WD-10	WD-20
Water Output	≥5L/H	≥10L/H	≥20L/H
Consumption	5KW	7.5KW	15KW
Power Supply	AC110/220V, 50/60Hz	380V, 50Hz	380V, 50Hz
External Size(Φ*H)	310*700mm	355*820mm	405*677mm
Package Size(W*D*H)	360*360*820mm	360*350*900mm	540*390*740mm
Gross Weight	7.5kg	8.5kg	11.5kg

Auto-control Electric-heating Water Distiller



Features:

- \* Stainless steel material, adopt stamping and welding technology.
- \* Water shortage and power-off alarm; automatically make up water and heat again.
- \* Power, heating indicator and show water shortage.

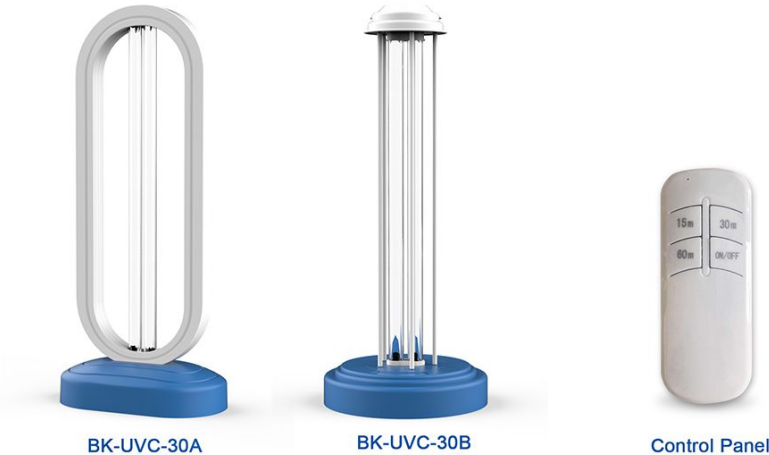
Technical Parameters:

Model	WD-A5	WD-A10	WD-A20
Water Output	≥5L/H	≥10L/H	≥20L/H
Consumption	5KW	7.5KW	15KW
Power Supply	AC110/220V, 50/60Hz	380V, 50Hz	380V, 50Hz
External Size(Φ*H)	310*740mm	235*855mm	415*720mm
Package Size(W*D*H)	360*360*830mm	360*360*920mm	535*380*770mm
Gross Weight	8kg	9.5kg	13kg

Bench UV Lamp

Introduction:

It is a low-pressure mercury lamp. The lamp tube is made of pure quartz glass, which is intensified by low-pressure mercury vapor (<10-2Pa) and emits UV rays with a wavelength of 253.7nm and 185nm. Quartz glass has a high transmittance of UV rays, reaching more than 90%, and has sufficient strength Energy UVC can be used for disinfection and sterilization in various fields.



Applicable Place:

It is suitable for sterilization and air purification in large spaces such as living room, bedroom, study room and toilet.

Features:

- \* Using quartz glass UV lamp tube, high transmittance, better sterilization and disinfection effect.
- \* UV sterilization and disinfection, remove formaldehyde and odor.
- \* Service life of the lamp is 8000 hours.

Technical Parameters:

Model	BK-UVC-30A	BK-UVC-30B
Rated Power	38W	
Application Area	30~40 m²	
Timing Range	Optional 15mins/30mins/60mins	
Light Source Type	Quartz UV light source	
Fixed Way	Base	
Control Mode	Remote control	
Power Supply	AC110V/220V±10%, 50/60Hz	
Product Size (W*D*H)	180*110*410mm	190*190*450mm

Portable UV Lamp

Introduction:

It mainly acts on the DNA of microorganisms, destroys the DNA structure, and makes it lose the functions of reproduction and self-replication, so as to achieve the purpose of sterilization and disinfection.



Applicable Place:

It is suitable for sterilization and air purification in kitchen, bathroom, toilet, shoe cabinet, wardrobe, car and other small spaces.

Technical Parameters:

Model	BK-UVC-02
Rated Voltage	DC3.7V
Rated Power Supply	3.8W
Charging Voltage	DC5.0V
Timing	30 mins
UV Lamp Service Life	30000 hours
Product Size (W*D*H)	56*56*125mm

# Biosafety Accessories

## Electric Height Adjustable Base Stand



### APPLICATIONS

For biosafety cabinet, laminar flow cabinet, fume hood and other laboratory equipment which need adjustable height base stand.

### FEATURES

1. Heavy load and smart balance
2. Smooth running speed and low noise
3. Concise and easy with nice appearance
4. Low maintenance cost
5. Easy to install and disassemble
6. Max Adjustable Route 400 mm
7. Width adjustable is customized
8. Multipurpose for laboratory apparatus



Control Button



Footmaster Caster

### TECHNICAL PARAMETERS

Max Route(mm)	100	150	200	250	300	350	400
Height of Min.Height(mm)	440	490	540	590	640	690	740
Base Stand Max.Height(mm)	540	640	740	840	940	1040	1140
Max Load	400kg						
Load Speed	5mm/s						
Working Frequency	10%, max continuous working time is 2 minutes						
Noise	<65dB						
Work Temperature	-26℃~65℃						
Material	Pedestal: 3.0mm steel Lifting Rod: Aluminium alloy						
Power Supply	AC220V±10%, 50/60Hz; 110V±10%, 60Hz						
Controller Consumption	100~200W						
Caster	Footmaster Caster						
Applications	For biosafety cabinet, laminar flow cabinet, fume hood and other laboratory equipment						



### Airflow Tester

Specifications:  
Power supply: 220AC 50/60Hz;110V,60Hz  
Input power: 30W Fuse: T2A L (C 5×20)  
Work style: Intermittent workings≤15 min  
Maximum atomization velocity: 1.5 ml/min  
Maximum volume: 35ml  
Working environment:  
Environment temperature: 10~40℃  
Relative humidity: ≤70% RH  
Air pressure range: 860~1060 kpa  
Storage environment:  
Environment temperature: 10~40℃  
Relative humidity: ≤95% RH  
Air Pressure range: 500~1060 kpa



### Air Velocity Meter

Measurement Range: 0~30m/s  
Accuracy: ±3% or ± 0.015m/s  
Resolution: 0.01m/s  
Data log 12,700+samples and 100 test IDs  
The 9535 model comes with a telescopic straight probe.  
The 9535-A model comes with an articulated probe.



### Dust Particle Counter

Particle size channel: 0.3, 0.5, 1.0, 3.0, 5.0, 10.0(μm)  
Sampling period: 1~10 minutes  
Number of sampling point: 2~9  
Sampling frequency: 2~9  
Sampling quantity: 2.83S/m



### Digital Sound Level Meter

Measurement Range: 30~130dB  
Accuracy: ±2dB  
Resolution: 0.1dB  
Sample rate: 4 times/s, 1 times/s



### Illumination Meter

Light Intensity range: 0~200000LUX  
accuracy: ±20LUX  
resolution: 1LUX



### Infrared Sterilizer

Two types:  
Type I: 37mm dimension of cavity  
Type II: 20mm dimension of cavity  
Central high-temperature: 825℃±50℃  
Size: 150\*95\*210mm  
Weight: 1600g  
Voltage: 220 V/50Hz  
Power: 180W



### Foot rest

Humanization design.  
Material is cold-rolled steel with anti-bacteria powder coating.  
Can be customized.



### Arm rest

Alleviate fatigue on operator's arms  
Prevent air obstruction  
Adjustable height range: 85~100mm



### Formalin Fumigation Sterilizer Ammonium Hydrogen Carbonate Neutralizer

Sterilize the cabinet with formalin for 8 hours and neutralize the formalin with ammonium hydrogen carbonate for 8 hours.



### Laboratory Chair

Material: Economy line-artificial leather  
Backrest height: 45cm  
Height range: 43~57cm

Muffle Furnace



Features:

- \* External material: cold-rolled steel with anti-bacterial powder coating and internal material: imported high density ceramic fiber. All stainless steel glory hole, make sure the color not change.
- \* Dual ceramic inner chamber and hollow heat insulation ensure that the temperature can go up quickly. Heating rate is about 60°C/min.
- \* Automatic parallel pressure door technology ensures the inner chamber temperature evenness and without leakage under the high temperature.
- \* PID micro digital screen controller, fixing temperature, over-temperature alarming and auto-stop.
- \* Safety protection measures: thermocouple failure, cut off power automatically when open the door and over temperature protection to avoid accidents occurring.
- \* Double-shell hollow thermal insulation , the shell not hot and the furnace internal cool quickly.

Technical Parameters:

Model	MC2.5-12	MC5-12	MC10-12
Max Temp.	1200°C		
Temp. Rising Time (Empty/min)	20		
Temp. Accuracy	±1°C		
Capacity(L)	2	7.2	16
Consumption(KW)	2.5	5	6
Power Supply	110/220V±10%,50/60HZ		
Internal Size(W*D*H)mm	200*120*80	300*200*120	400*250*160
External Size(W*D*H)mm	620*412*570	720*522*650	820*584*700
Package Size(W*D*H)mm	700*500*700	810*650*760	900*710*810
Gross Weight(kg)	45	60	98

Muffle Furnace

Features:

- \* Program controlling temperature for TP series.
- \* Heating wire is set in four sides of the furnace, anti-corrosion, prevent contamination.
- \* Special insulation design, low shell temperature.
- \* SCR control, PID parameter self-setting;
- \* Low energy consumption.
- \* Multiple safety protection design:
  - Over-temperature alarm;
  - Power off when over-temperature/over-load.
  - Manual or automatic switch without interference;
  - Built-in parameter password control function.



MX6-10T/TP; MX8-10T/TP; MX16-10T/TP; MX8-12T/TP; MX10-13T/TP; MX6-16TP; MX11-16TP; MX6-17TP; MX11-17TP; MX30-10T/TP; MX30-12T/TP

Technical Parameters:

Model	MX6-10T/TP	MX8-10T/TP	MX16-10T/TP	MX30-10T/TP	MX6-12T/TP	MX8-12T/TP	MX30-12T/TP
Max. Temp.(°C)	1000				1200		
Capacity(L)	6	8	16	30	6	8	30
Temp. Accuracy	±1°C						
Consumption(KW)	2.8	3.5	6	10	2.8	3.5	10
Power Supply	220/380V±10%, 50/60HZ						
Heating Rate	0-30°C/min						
Rising Time(Empty)	30 minutes						
Temp. Uniformity	±6°C						
Material	External material: Cold rolled steel carbon steel spraying Internal material: Ceramic inner chamber						
Heating Element	Nickel chromium alloy wire						
Temp. Control	Intelligent temperature controller						
Optional Accessory Functions	Observation hole; Exhaust chimney; Furnace bottom plate Automatically power off once the door is opened; 30 programmable periods						
Internal Size(W*D*H)mm	180*230*150	200*300*120	250*400*160	300*500*200	180*230*150	200*300*120	300*500*200
External Size(W*D*H)mm	480*500*660	500*580*660	550*690*700	770*820*580	480*500*660	500*580*660	770*820*580
Package Size(W*D*H)mm	610*660*870	610*800*870	660*910*870	870*1110*800	610*660*870	610*800*870	870*1110*800
Gross Weight(kg)	65	75	80	85	65	75	85

Model	MX8-13T/TP	MX10-13T/TP	MX6-16TP	MX11-16TP	MX6-17TP	MX11-17TP
Max. Temp.(°C)	1300		1600		1700	
Capacity(L)	8	10	6	11	6	11
Temp. Accuracy	±1°C					
Consumption(KW)	4		6	8	6	8
Power Supply	220/380V±10%, 50/60HZ					
Heating Rate	0-30°C/min					
Rising Time(Empty)	30 minutes					
Temp. Uniformity	±6°C					
Material	External material: Cold rolled steel carbon steel spraying Internal material: Ceramic inner chamber					
Heating Element	Nickel chromium alloy wire					
Temp. Control	Intelligent temperature controller					
Optional Accessory Functions	Observation hole; Exhaust chimney; Furnace bottom plate Automatically power off once the door is opened; 30 programmable periods					
Internal Size(W*D*H)mm	200*300*120	200*300*180	150*300*120	200*300*180	150*300*120	200*300*180
External Size(W*D*H)mm	630*650*730	600*640*850	650*750*1000	700*750*1200	650*750*1000	700*750*1200
Package Size(W*D*H)mm	710*910*920	770*860*990	800*900*1150	850*900*1350	800*900*1150	850*900*1350
Gross Weight(kg)	70	75	180	220	180	220

Automatic Medical Sealer



Spray carbon steel



304 stainless steel

Features:

- \* Auto-control function, continuous operation; substitution of manual sealing machine;
- \* Microcomputer Temperature controller, accuracy ±1%, working temperature range 60~220°C;
- \* Fast heating, 40 seconds required from room temperature to 180°C;
- \* Adjustable fixed-force system, suitable for sealing paper-plastic bags, 3D paper-plastic bags and paper-paper bags;
- \* Advanced flat ceramic heating components, high-temperature stability, long life expectancy and high heat efficiency.

Technical Parameters:

Model	MS100-L
Seal Speed	10m/min
Seal Width	12mm
Seal Margin	0~35mm adjustable
Display	LED or LCD screen
Machine shell material	Spray carbon steel or 304 stainless steel
Consumption	500W
Power Supply	AC110/220V±10%, 50/60Hz
External Size (W*D*H)	480*240*150mm
Packing Size (W*D*H)	560*360*240mm
Gross Weight	13kg

Printing Medical Sealer

Features:

- \* Temperature controlled by a microcomputer, accuracy ±1%, working temperature range is 60~220°C;
- \* Automatic fault detection and alarm;
- \* Fast heating, 40 seconds required from room temperature to 180°C;
- \* Automatic temperature reduction operated by a fan connected to temperature control system, reducing the waiting time;
- \* Adjustable fixed-force system, suitable for sealing 3D paper-plastic bags and paper-plastic bags of any sickness;
- \* Advanced flat ceramic heating components, high-temperature stability, long life expectancy and high heat efficiency.

MS101-PD

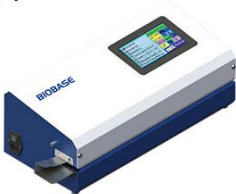


Spray carbon steel



304 stainless steel

MS101-T



Spray carbon steel



304 stainless steel

Printing System Features:

- \* Print function can be disabled or partially activated;
- \* Sterilizing and expire date auto adjust; Automatic faults alarm display during working;
- \* Adjustable character font and style, easy to print more information on narrower bags;
- \* The system provides the required minimum width of the bag based on the content of print, easier for users to define the print content or select appropriate bag; Auto alarm when width is insufficient.

Technical Parameters:

Model	MS101-PD	MS101-T
Seal Speed	10m/min	
Seal Width	12mm	
Seal Margin	0~35mm adjustable	
Display	4.3" color LCD screen	7 "color LCD touch screen
Machine shell material	Spray carbon steel or 304 stainless steel	
Consumption	500W	
Power Supply	AC110/220V±10%, 50/60Hz	
Optional Function	No	Dual-line printing, Handwritten input
External Size (W*D*H)	560*260*220mm	
Packing Size (W*D*H)	660*360*320mm	
Gross Weight	19kg	