

OLYMPUS

EVIS EXERA III

EVIS EXERA III DUODENOVideoscope

TJF-Q190V

Supporting Your Standard of Care



TJF-Q190V DUODENOVideoscope

Supporting Your Standard of Care



ERCP Solutions That Allow You to Focus on **Your Patient**

Endoscopic retrograde cholangiopancreatography (ERCP) procedures are highly challenging for all parties involved: **gastroenterologists, nurse managers, reprocessing technicians, and hospital administrators**. Most of all, it is a difficult time for your **patient**, both physically and mentally.

Leading up to the ERCP procedure, your patient and their family have already been through a long and taxing medical journey. There is a lot of uncertainty about what lies ahead, and they are counting on your team to help them through this process. The technical aspects of the procedure aren't necessarily top-of-mind for your patients in these moments. Rather, their questions are likely to be:



“Will this procedure be painful?”
“Will I get the answers I am looking for?”
“Will you be able to help me get better?”
“What is my prognosis?”

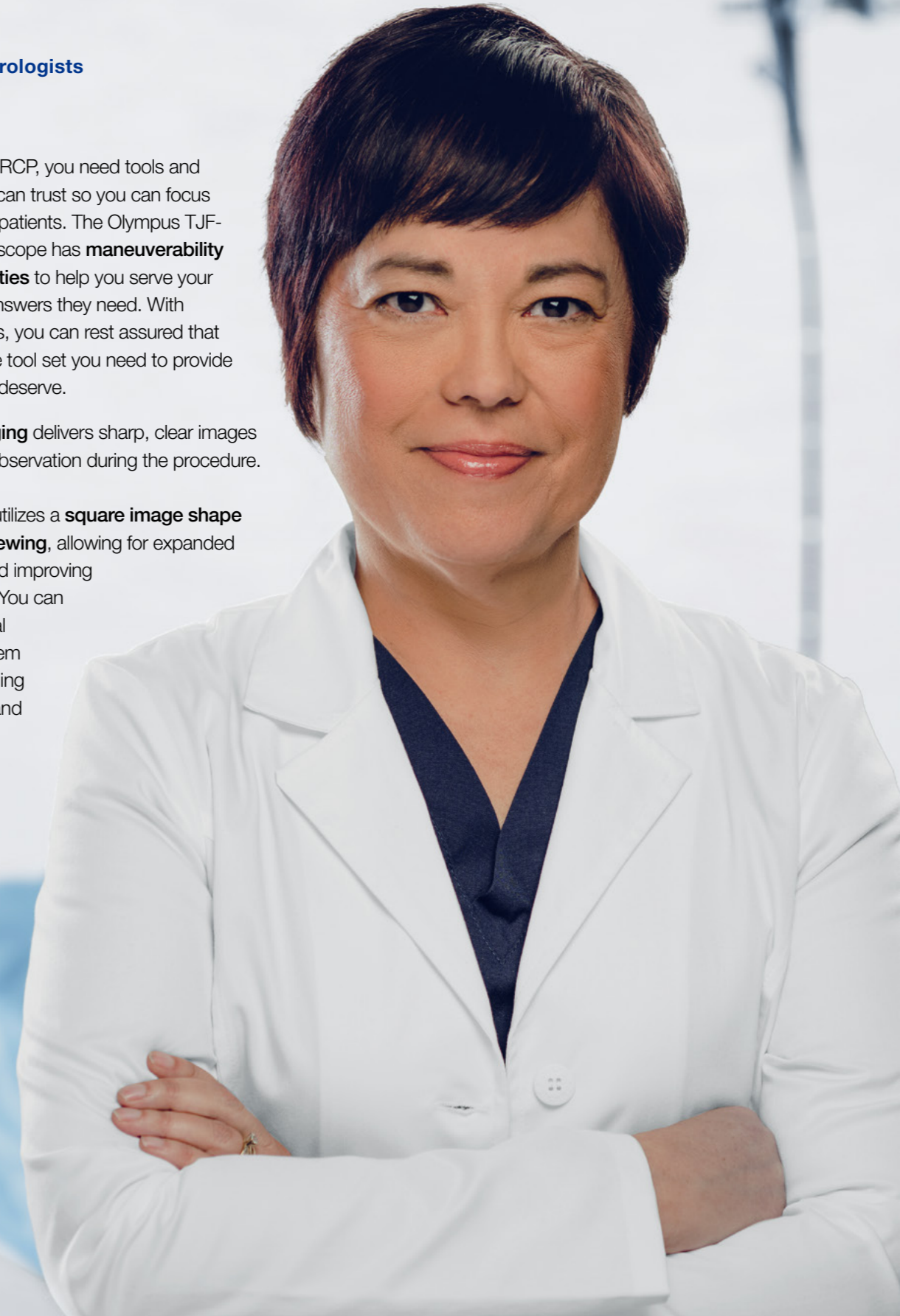
The next generation of Olympus duodenovideoscope, combined with our unique guidewire and sphincterotome technologies, is designed to provide a comprehensive solution to nearly all ERCP access procedures.

Helping **Gastroenterologists** Provide Quality Care

When performing an ERCP, you need tools and technologies that you can trust so you can focus on taking care of your patients. The Olympus TJF-Q190V duodenovideoscope has **maneuverability and imaging capabilities** to help you serve your patients and get the answers they need. With proven ERCP solutions, you can rest assured that you have the complete tool set you need to provide the care your patients deserve.

Our **high quality imaging** delivers sharp, clear images for easy viewing and observation during the procedure.

The new TJF-Q190V utilizes a **square image shape and 15° backward viewing**, allowing for expanded vertical field of view and improving cannulation efficiency. You can continue to rely on dual guidewire locking system at the distal end, enabling locking of 0.035 inch and 0.025 inch guidewires.



TJF-Q190V DUODENOVideosCOPE

Supporting Your Standard of Care

Supporting **Nurse Managers** and Their Teams

Nurse managers are ultimately responsible for overseeing effective and thorough reprocessing of duodenovideoscope, a critical component of patient safety before and after an ERCP procedure.

The **single-use distal** cover is designed for improved visualization of the distal end and reprocessing.



Providing **Hospital Administrators**

Safe & Effective Tools

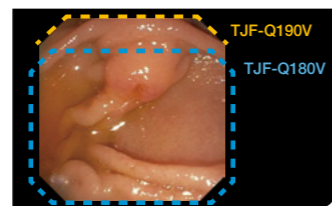
The Olympus TJF-Q190V duodenovideoscope provides the latest advancements in ERCP technology to satisfy your physicians, as well as a design meant to provide efficient reprocessing to meet the needs of your nurse managers.

You can rely on **Olympus field service and clinical support** to ensure that you team is well-prepared and has all of the tools they need for success.

Our Newest Duodenovideoscope Offers the Following Features:



Single-use distal cover for improved visualization of the distal end and reprocessing.



Expanded field of view with a square display.

- Extended view area of TJF-Q190V
- View area of TJF-Q180V



Guidewire locking capability to facilitate 0.035 inch and 0.025 inch short guidewire locking.



High-quality imaging capabilities for viewing and observation.

TJF-Q190V DUODENOVideoscope

Features and Benefits

Single-use Distal Cover

Allows for visualization of distal end and access for reprocessing.

Guidewire Locking

Facilitate short guidewire locking with dual system at the distal end.

Improved Cannulation Efficiency

Square image shape and 15° backward viewing allow for expanded vertical field of view.

Distal-end Flushing Adaptor

Designed for directed flushing during manual cleaning.

Waterproof One-touch Connector

190-series scopes allow a one-step connection to the video system.

High Force Transmission (HFT)

HFT, the scope handling technology designed to improve scope responsiveness and ergonomics in 190-series colonoscopes, is now incorporated into the TJF-Q190V.

Narrow Band Imaging (NBI)

NBI with the EVIS EXERA III system is significantly brighter than with the EVIS EXERA II System.

Overall Image Quality

The EVIS EXERA III System and endoscopes provide superior image quality to EVIS EXERA II System and endoscopes.



EVIS EXERA III DUODENOVideoscope OLYMPUS TJF-Q190V

TJF-Q190V DUODENOVideoscope

Supporting Your Standard of Care

Olympus takes our role in enhancing patient safety very seriously. We are continuously seeking to improve the next generation of our products, provide guidance on their safe and effective use and increase the ease and efficacy of endoscope reprocessing.

Our ultimate goal is not to control infections potentially associated with endoscopy but to prevent them.



Providing **Technicians** with Access

Reprocessing technicians are charged with a critical responsibility: reprocessing duodenovideoscopes for ERCP procedures. Patients face potential risks with any medical procedure, which may add to their stress. Technicians want to do what they can to reduce these concerns, including working to avoid potential infections associated with ERCP.

The Olympus TJF-Q190V has features that are **designed with Technicians in mind**.



Single-use Distal Cover
Designed to provide access for brushing and flushing.



Distal-end Flushing Adapter
Designed to direct flushing during manual cleaning.



Specifications, design and accessories are subject to change without any notice or obligation on the part of the manufacturer.



OLYMPUS MEDICAL SYSTEMS CORP.
2951 Ishikawa-cho, Hachioji-shi, Tokyo 192-8507, Japan
www.olympus-global.com

Global Professional Education website
www.olympusprofed.com



Product-Information-Sheet

Endoscopic Ancillaries

ENDOCUFF
VISION™



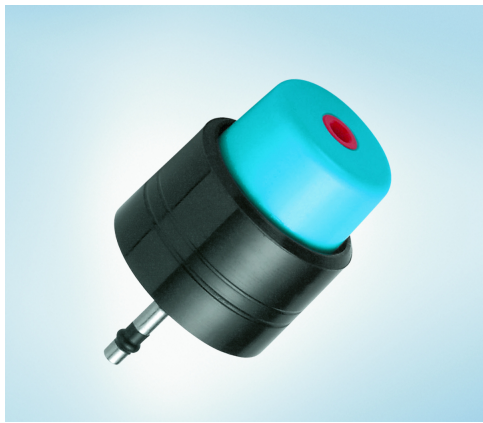
Article number	Article Name	Quantity value	Description	Endoscope Compatibility	Area Compatibility
028725	MB-142	1	Adult reusable bite block	For all GI endoscopes with a maximum insertion tube outer diameter of 15 mm or less	



Article number	Article Name	Quantity value	Description	Endoscope Compatibility	Area Compatibility
028794	MB-358	10	Semi-disposable biopsy valve	Gastro, colono and duodenoscopes: OES 10, 20, 30, 40, E-Line, EVIS 100, 130, 140, 145, 160, 165, 180, 185, 170, 190, 200, 230, 240, 260, 290, 1100, 1200, 1500, V-Class Ultrasonic endoscopes: GF-UM20, -UM130, -UMQ130, -UM160, -UE160-AL5, -UE260-AL5, -UE190, -UE290, JF-UM20, CF-UM20, MH-908 blind probe	



Article number	Article Name	Quantity value	Description	Endoscope Compatibility	Area Compatibility
027797	MH-438	1	Air/water valve, lubricant-free	Gastro, colono and duodenoscopes: OES 40, EVIS 140, 145, 160, 165, 180, 185, 170, 190, 240, 260, 290, 1100, 1200, 1500, TGF-UC180J, -UC260J	



Article number	Article Name	Quantity value	Description	Endoscope Compatibility	Area Compatibility
027798	MH-443	1	Suction valve, lubricant-free	Gastro, colono and duodenoscopes: OES 40, EVIS 140, 145, 160, 165, 180, 185, 190, 240, 260, 290, 1100, 1200, 1500, TGF-UC180J, -UC260J	