
Cable ID	Summary	Test Limit	Length	Headroom	Date / Time
link D-4	PASS	Cat 6 Chan	61.7 m	5.1 dB (NEXT)	07-12-2020 23:15

Total Length:	61.7 m
Number of Reports:	1
Number of Passing Reports:	1
Number of Failing Reports:	0
Number of Warning Reports:	0
Documentation Only:	0



Cable ID: link D-4

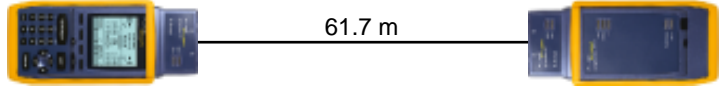
Date / Time: 07-12-2020 23:15:00
Headroom 5.1 dB (NEXT 36-78)
 Test Limit: Cat 6 Chan
 Cable Type: Cat 6 UTP

Operator: Lanitron SRL
 Software Version: V06.12
 NVP: 74.0%

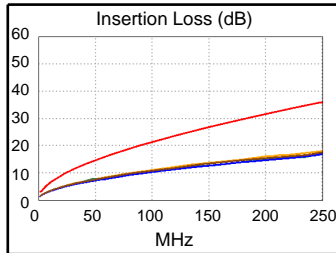
Test Summary: PASS

Model: OMNIScanner2
 Main S/N: 50D99L00362
 Remote S/N: 50E99L00516
 Main Adapter: MT CAT6 SSTP
 Remote Adapter: MT CAT6 SSTP

Wire Map	Expected	Actual
PASS	omni: 12345678	12345678
	rem.: 12345678	12345678

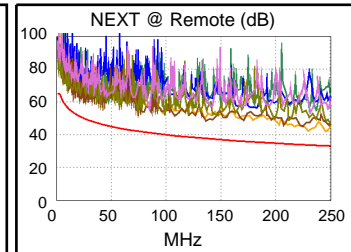
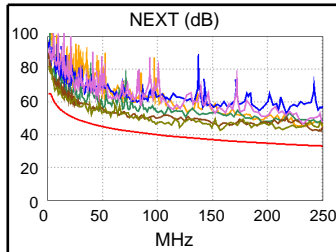


Length (m), Limit 100.0	[Pair 36]	61.7
Prop. Delay (ns), Limit 555	[Pair 12]	300
Delay Skew (ns), Limit 50	[Pair 12]	22
Resistance (ohms)		N/A
Insertion Loss Margin (dB)	[Pair 12]	17.9
Frequency (MHz)	[Pair 12]	249.7
Limit (dB)	[Pair 12]	36.0

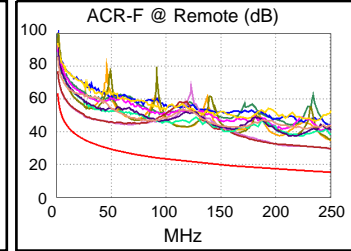
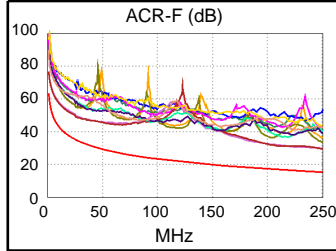


Worst Case Margin

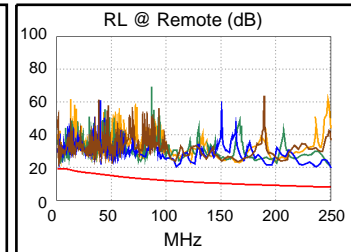
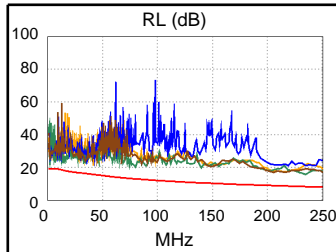
PASS	MAIN	SR
Worst Pair	36-78	12-36
NEXT (dB)	5.1	8.6
Freq. (MHz)	120.6	229.9
Limit (dB)	38.6	33.7
Worst Pair	36	36
PS NEXT (dB)	6.7	9.9
Freq. (MHz)	120.6	225.4
Limit (dB)	35.7	31.0



PASS	MAIN	SR
Worst Pair	45-36	36-45
ACR-F (dB)	13.1	13.1
Freq. (MHz)	1.0	1.0
Limit (dB)	63.6	63.7
Worst Pair	36	45
PS ACR-F (dB)	15.5	15.6
Freq. (MHz)	25.3	1.0
Limit (dB)	32.3	60.7



PASS	MAIN	SR
Worst Pair	36	36
RL (dB)	4.6	7.5
Freq. (MHz)	12.9	9.5
Limit (dB)	18.4	19.0



Compliant Network Standards:
 10BASE-T 100BASE-TX 100BASE-T4
 1000BASE-T ATM-25 ATM-51
 ATM-155 100VG-AnyLan TR-4
 TR-16 Active TR-16 Passive