



Interton Move

New full-family hearing solution



If you like getting more from life, you'll like Interton Move

If you like to get more out of life and your business, then Interton Move will make you smile from ear to ear.

Designed for hearing care professionals (HCPs) who value ease of use, spending more time with clients and focusing on the important things in life, Interton Move is our biggest and best portfolio upgrade that gives your clients easy access to really great hearing experiences.

Built on proven GN technology and our new chip platform, Interton Move offers incredible sound quality, seamless connectivity to both iOS and selected Android™ devices (backed-up by our intuitive Interton Sound app), and a powerful rechargeable option with lightning-fast recharge times.

And the good news doesn't stop there. We understand you have more important things to do with your time than learning different fitting software, so Interton Move has the same familiar system as Interton Ready - stable and intuitive to use.

Interton Move is more than just a great product, it's a full family in four technology levels of user-friendly hearing aids that can help you widen your client-base and encourage existing clients to trade-up. It caters to all types of hearing loss, from mild to profound and comes in all form factors - even Super Power BTE.

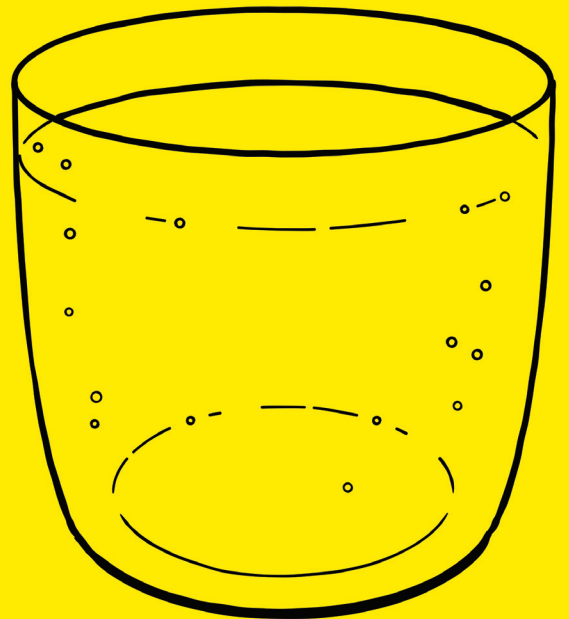
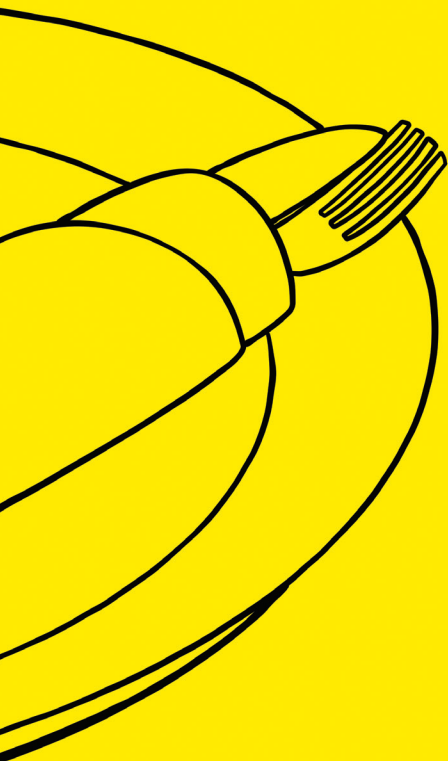
Interton Move is a great move for your business and a great move for your clients.

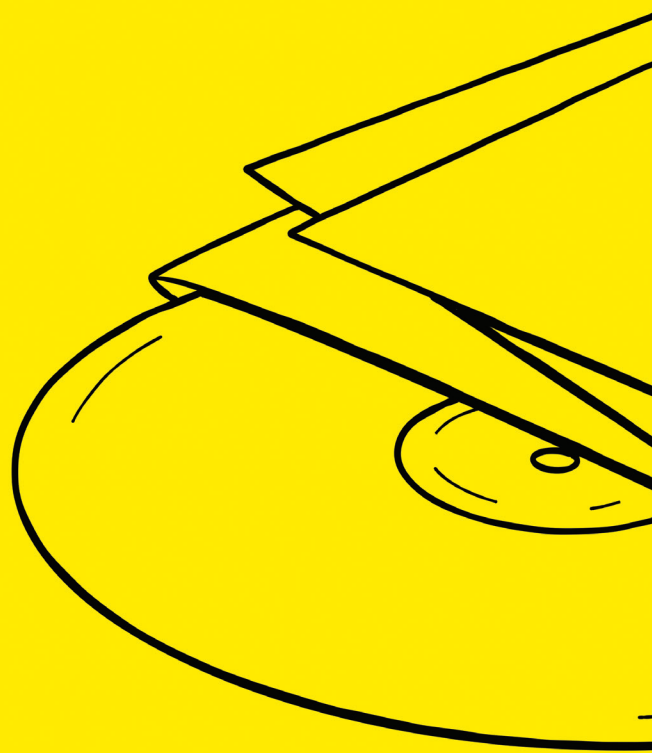
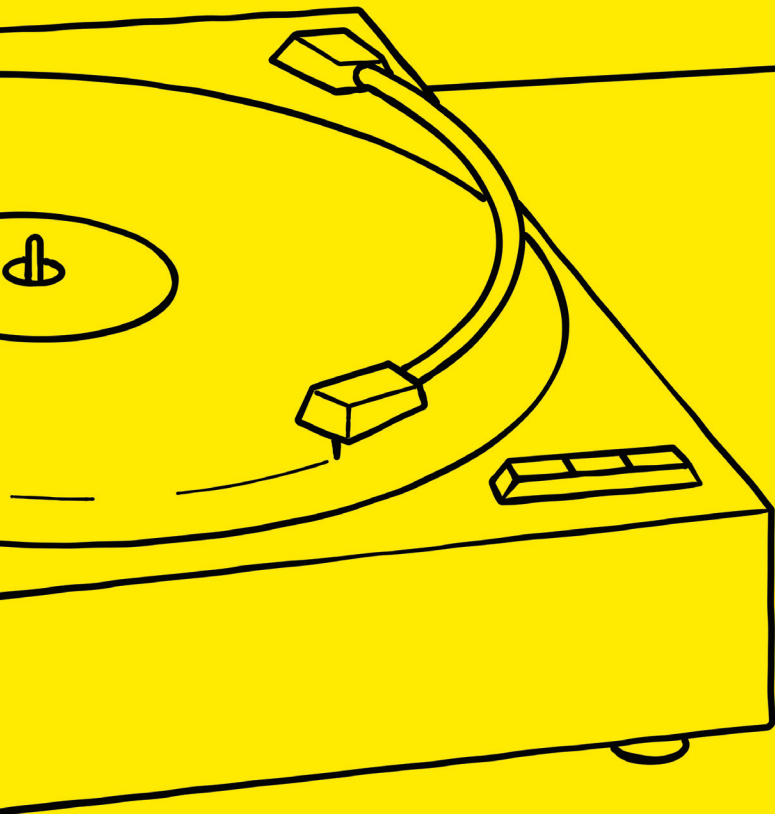


*Compared to no hearing aids. Schumacher 2021.

A sound upgrade

Clients using Interton Move felt they heard better, used less listening effort and felt satisfied with the hearing aids. They also reported feeling less stressed and tired at the end of the day and less held back by their hearing loss when they used Interton Move.*





The first step in creating a great hearing aid is laying a strong foundation

Your clients are active people who want to live their lives and not be limited by their hearing loss. That is why Interton Move has a powerful new chip platform aimed at delivering amazing sound quality, so your users can feel confident about their hearing and truly take part in the special moments they love.

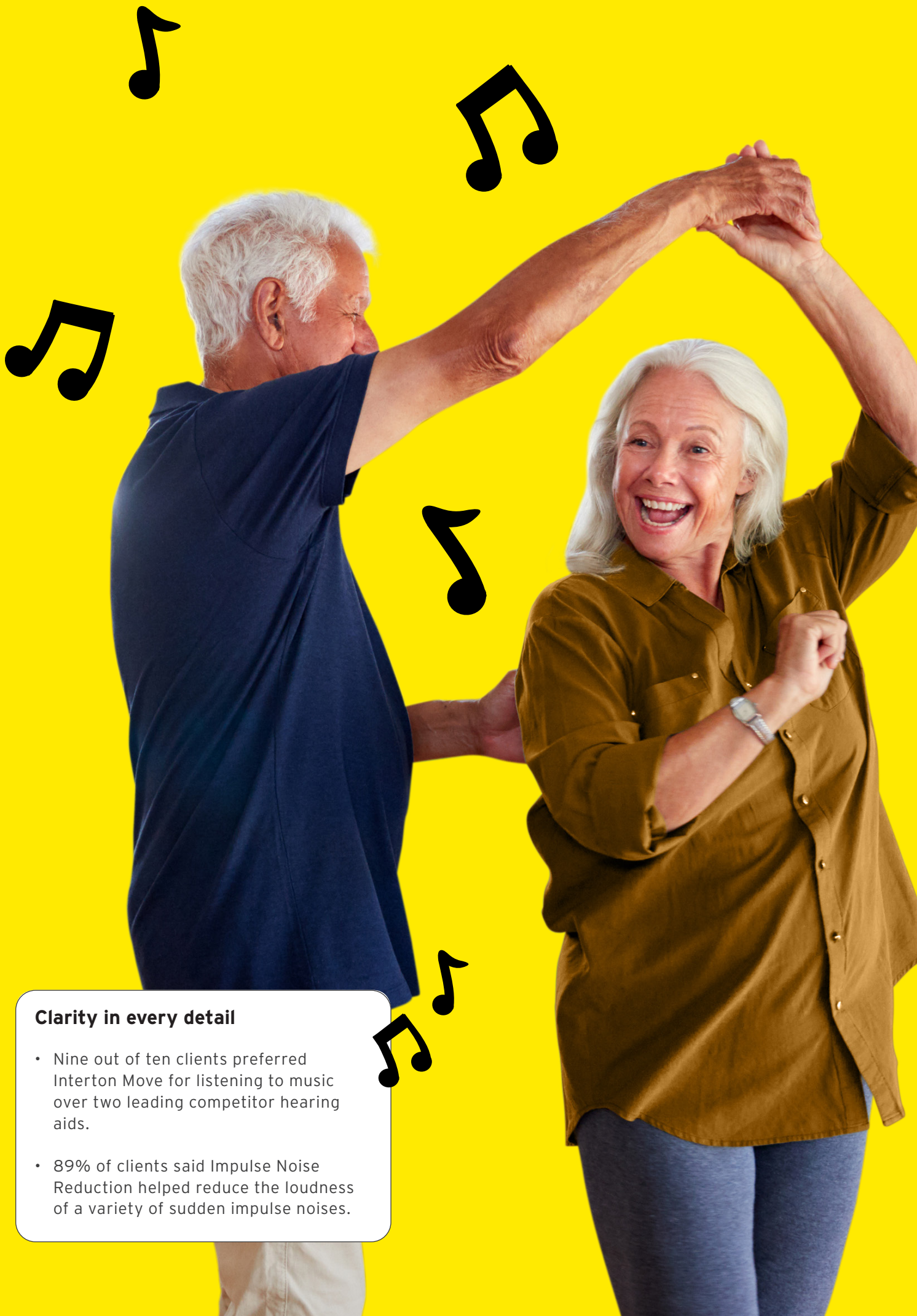
The powerful new chip platform doubles the memory and the processing speed compared to our previous hearing aids. This improves all other aspects of the hearing aid. Acoustic sound entering the microphones can be digitally reproduced with more detail, while new features were added without decreasing performance.

There is also a 20% increase in efficiency, meaning longer use time before running out of power. This upgrade allows Interton Move to run faster and more efficiently than previous products with more power for all the additional features we've added.

A powerful new chip

- 100% more speed and memory capacity*
- 20% less power consumption*

*Compared to previous generation of Interton hearing aids.
Schumacher 2021.



Clarity in every detail

- Nine out of ten clients preferred Interton Move for listening to music over two leading competitor hearing aids.
- 89% of clients said Impulse Noise Reduction helped reduce the loudness of a variety of sudden impulse noises.

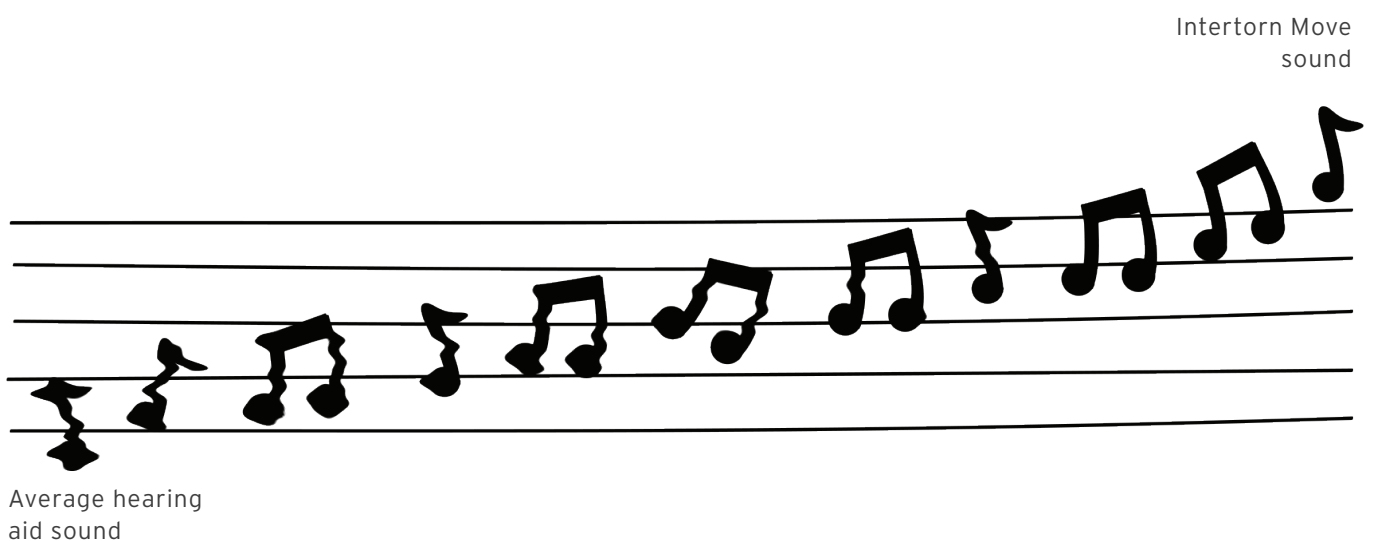
More clarity and comfort for even the loudest sounds

Good sound quality is a major factor in client satisfaction with their hearing aids.

A clean, distortion-free signal in a hearing aid is a crucial part of ensuring good sound quality for your clients. One major advantage of the new chip in Intertorn Move is the increased clarity of sound as collected by the microphones. Sounds at the loudest end of the hearing spectrum - up to 116 dB SPL - can now be digitally reproduced and processed by Intertorn Move, instead of being clipped or distorted. This cleaner representation ensures more clear sound quality.

This is especially true for music, a signal that has a particularly wide dynamic range of soft to loud sounds. Music lovers can get more enjoyment from their favorite music.

Loud sudden noises are also handled in a new way in Intertorn Move. Impulse Noise Reduction is a feature that detects these noises almost instantly and prevents the loudest peaks of the sound from exceeding the gain prescription of the hearing aid. Clients still hear the impulse noise but at a level that is more comfortable and less sharp or jarring than without Impulse Noise Reduction.





Stay in the conversation with more from both ears

Your clients hear their best when both ears can work together. This is especially true for busy situations with lots of sound occurring all around your client. The brain integrates all those various sounds coming in from both ears to help “boost” what your client wants to hear while reducing the interference from other sounds.

Integrated Directionality

This microphone strategy utilizes omnidirectional and directional microphones working together in both hearing aids. The hearing aids analyze the listening environment and can change the configuration of the microphones in one, or both, ears based on that information. Best of all, the client benefits from these adjustments in microphone configuration automatically, without any input or action required on their part.

Combined Directionality

This solution combines an omnidirectional microphone in one ear, while simultaneously using a directional microphone in the opposite ear. The microphones always remain in this configuration. The static nature of this approach gives your client the chance to orient themselves in their environment, and focus their attention on the sound, or multiple sounds, they are interested in hearing at any one time.



Hear well

- Using an omnidirectional microphone in one ear and a directional microphone in the other improves ease of listening and awareness of sounds in the environment without significantly reducing directional benefit.*
- Using an omnidirectional microphone in one ear and a directional microphone in the other provides the best speech intelligibility in a noisy environment when speech is located to the sides of the listener.*

*Compared to bilateral omnidirectional and bilateral directional processing. Mecklenburger 2018.

Interton Move audiology overview

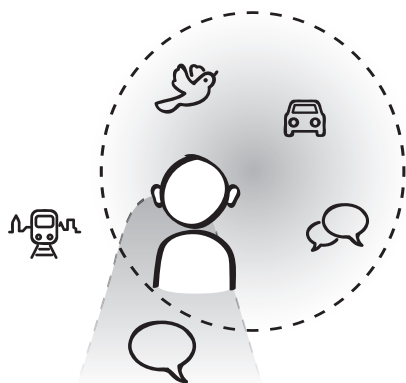


Integrated Directionality

Adaptive microphone feature that uses true binaural hearing strategy. Continuous ear-to-ear exchange of data about the environment optimises microphone settings in each ear for a wide variety of everyday listening situations.

Benefit

Users can focus on the sounds that are important to them without losing awareness of what's going on around them, so they can effortlessly follow conversations and shift attention naturally in any sound environment, all without the need for any manual adjustments.

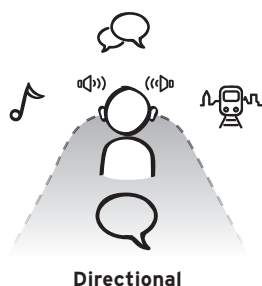


Combined Directionality

Another binaural strategy that combines an omnidirectional microphone in one ear, while simultaneously using a directional microphone in the opposite ear.

Benefit

Gives the users the chance to monitor the situation and focus their attention on the sound they are most interested in hearing.



Directional

Auto-Steered Directionality

Hearing aids analyse the sound environment and switch microphone settings between omnidirectional and directional. In directional mode, the beam width can adapt to maximise listening in noise. The switching happens so smoothly that users don't notice the change.

Benefit

Users can benefit from automatic switching for better speech understanding when needed without any need to switch programs manually. The transitions between microphone modes are performed smoothly to provide a more natural sound experience.



Omnidirectional

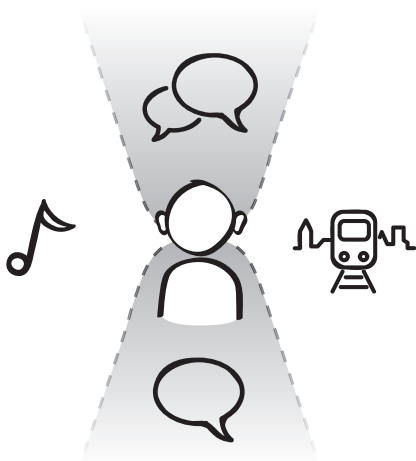


Speech-Focused Directionality

An adaptive directional feature, which changes directional polar patterns based on the surrounding noise source for the optimal directional benefit.

Benefit

Users can understand speech in front of them better even in dynamic sound environments.

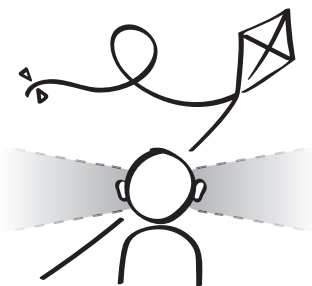


Adaptive Noise Reduction

A unique and fast-acting spectral subtraction technology that precisely identifies speech and noise and reduces unwanted noise without degrading the speech signal.

Benefit

Noise reduction will provide comfort in noisy listening situations without compromising speech understanding.

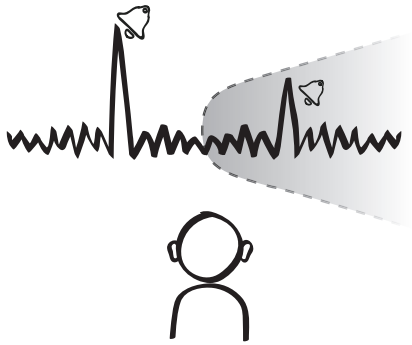


Adaptive Wind Noise Reduction

A specific noise reduction technique that is designed to detect and reduce wind noise only. Gain for speech sounds is preserved even in windy situations and the feature does not reduce any gain if wind is not present.

Benefit

With Adaptive Wind Noise Reduction, users won't miss out on important conversations, even in windy conditions. Whether they're cycling, hiking or golfing, they can enjoy life in any outdoor environment without compromising sound quality or speech understanding.

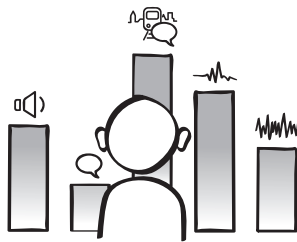


Impulse Noise Reduction

A feature that detects loud sudden noises almost instantly and ensures comfort by preventing the noise from exceeding the gain prescription of the hearing aid.

Benefit

Users will hear the loud noise at a comfortable and less sharp level, enjoying even the loudest environment.

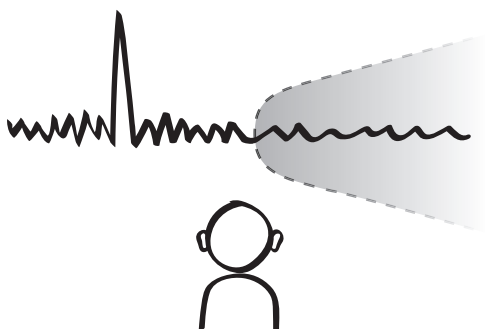


Environmental Gain Tuner

Environmental Gain Tuner optimises gain settings for better listening experiences in five different environments. The hearing aids analyse the surrounding environment and automatically apply preset gain settings as the user moves from one acoustic environment to another. The gain settings can be customised for each environment based on personal preference.

Benefit

Users can benefit from automatic adjustments in gain without the need to make any adjustments in volume themselves. It's the perfect feature for active people who encounter a wide variety of listening situations. The customisable gain settings inside the feature ensure that each user experiences the best settings specific to them and the situations they encounter.



Feedback Manager Plus

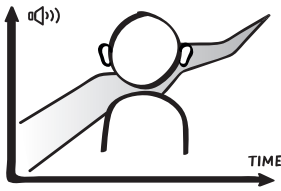
A feedback cancellation feature that uses two cancellation filters to eliminate feedback without reducing amplification or compromising sound quality. Feedback Manager Plus also has the ability to eliminate feedback from sudden movements or objects placed near the ear.

Benefit

Best-in-class feedback cancellation enables users to enjoy the sound quality without experiencing feedback or distorted sound in any situation.

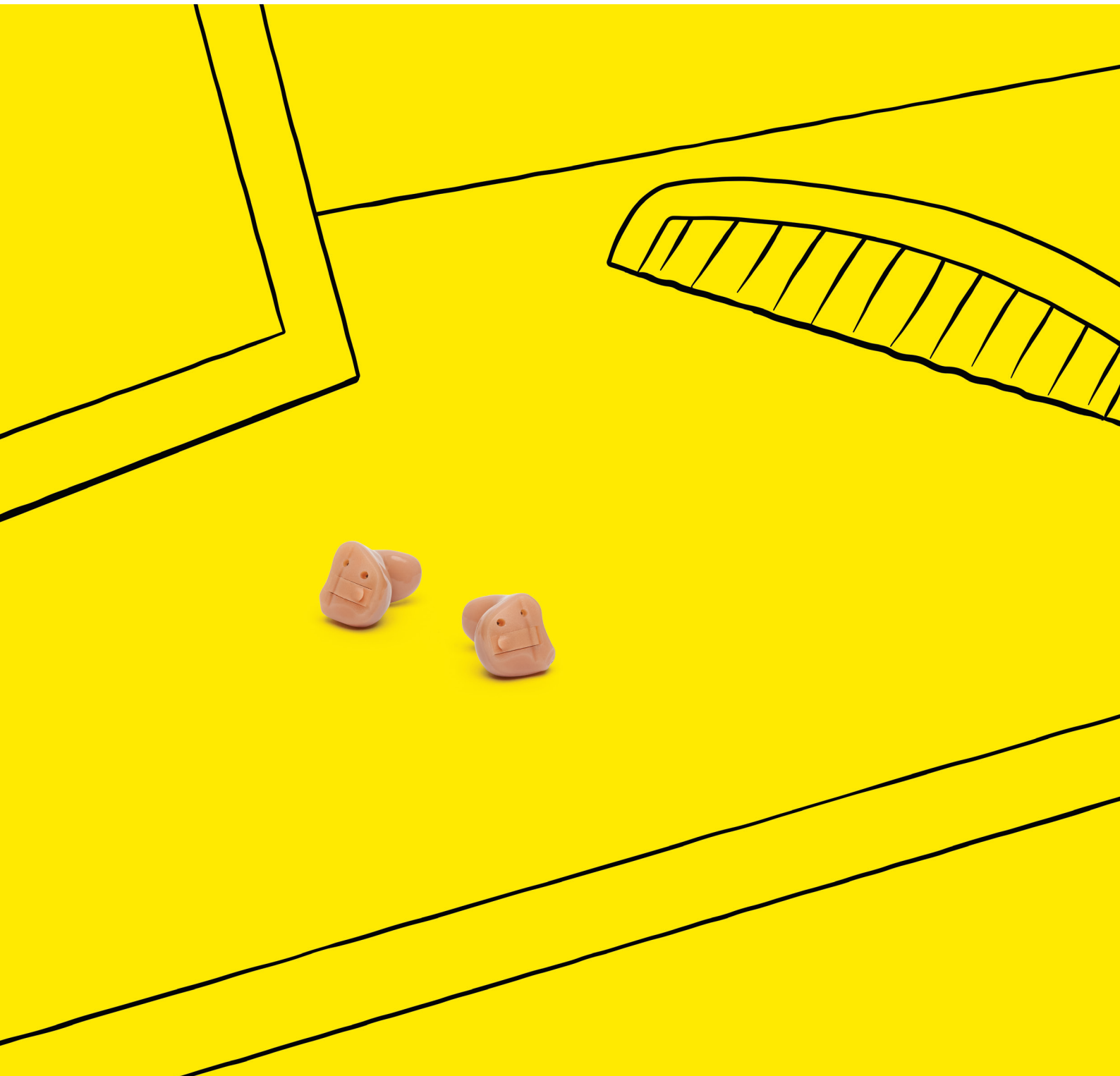
Acclimatization Manager

For some users, adapting to prescribed gain can be a challenge, especially when the users are new to hearing aids. Acclimatization Manager gradually increases gain over time to eventually achieve prescribed gain. The starting point can be set as low as 60% of the desired end gains, and the amount of time over which the gain increases can be customised to each user.



Benefit

Acclimatization Manager allows new users to adapt to amplification comfortably and seamlessly. It can also be beneficial in cases where a new user is unable to return to the dispenser for follow-up for an extended period of time.



A full day of freedom

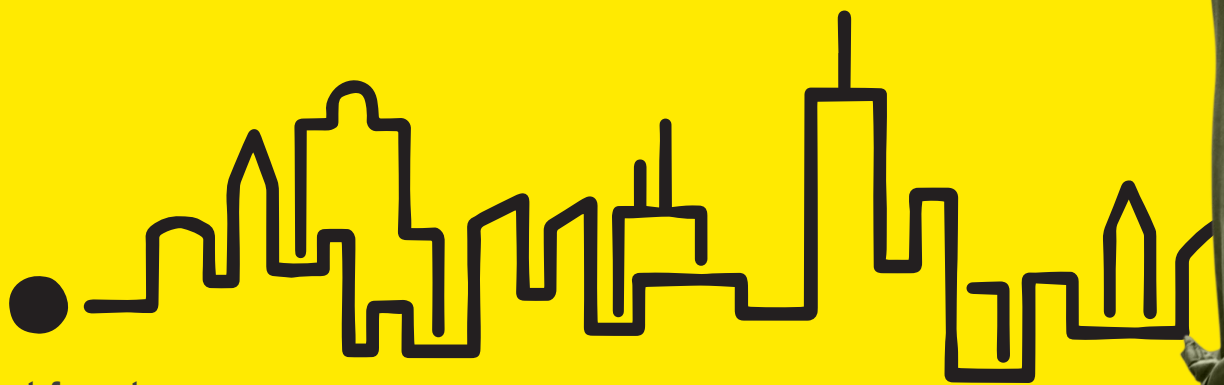
A great hearing aid isn't just about sound - but also ensuring that any hearing solution fits seamlessly into your client's life. Interton Move keeps going for as long as your users do. It features the first Interton rechargeable receiver-in-the-ear (RIE) hearing aid with a built-in lithium-ion battery that holds up to 30 hours of power on just a single 3-hour charge.

The Desktop charger is a small, sturdy unit plugged into a wall outlet. It utilizes wireless, inductive charging without the need for metal contacts that can become corroded over time.

Your clients simply remove their hearing aids and place them in the charger until they are ready to use the hearing aids again. Visual LED indicators on the top of the RIE hearing aids slowly flash when the hearing aids are charging inside it and show a steady green light when the hearing aids have reached a full charge.

Checking battery level on the go

For even more peace of mind clients fitted with rechargeable hearing aids can always check their battery status in the app.



Breakfast
at Joe's





Desktop charger with Interton Move rechargeable hearing aids



Dinner at
The Grill

Upgrades to wireless connectivity

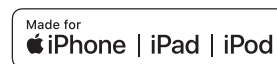
Another important factor in a great listening experience is extending better audibility beyond the hearing aids to the other devices we use every day for communicating, working and entertainment.

Interton Move is our first hearing aid that can seamlessly stream from both iOS and selected Android devices, using the super-stable Bluetooth® Low Energy technology. This advance means you can offer Interton Move to more clients, safe in the knowledge they can use their hearing aids to stream calls, listen to their favourite soundtracks or catch-up on the latest podcast.

Clients can continue to enjoy the many great benefits of the Interton Sound app, which include quick, discreet adjustments in real time, a “find my hearing aid” feature for misplaced devices and tips for encouraging clients to get the most out of their hearing aids.

Another new benefit of the Interton Sound app is the ability to update Interton Move devices remotely. The hearing aids can receive and download updated hearing aid software right from the app. This ensures optimal performance without the need for your clients to come into the your office and plug into the fitting software.

Your clients can add even more benefits to their Interton Move hearing aids and enhance their everyday lives with our discreet wireless accessories. They can stream sound to their hearing aids from their TV, or speech from a person in a one-to-one setting or large gatherings.



Interton TV Streamer 2



Interton Multi Mic



Interton Micro Mic



Interton Phone Clip 2



Interton Remote Control 2



Interton Remote Control



	Direct audio streaming from iOS devices	Direct audio streaming from selected Android devices	Interton Sound app	Wireless accessories
Interton Move 6	•	•	•	•
Interton Move 4	•	•	•	•
Interton Move 3	•	•	•	•
Interton Move 2			•	•



Designed for a life meant to be well lived

At Interton we believe life is for living, so we have taken great care to ensure the full family of Interton Move hearing aids is both protected against wear and tear and is comfortable on the ear.

All form factors - including rechargeable hearing instrument (RHI) and Super Power BTE - feature nano-coating and IP68 certified. This means the hearing aids have our highest protection against both sweat and dust and are water resistant.

Interton Move offers the new SureFit 2C receivers and domes to deliver improved retention and fitting comfort, while the attachment of domes is also more convenient - all this to make your daily work more efficient.



Colours

RIE and BTE products

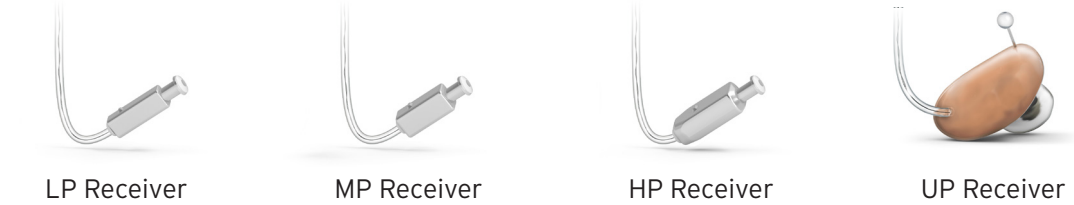
Sterling Grey	Medium Blonde	Beige	Dark Brown	Black
				

Customs

Light	Beige	Medium Brown	Brown	Dark Brown
				

Recivers and domes

SureFit 2C Recivers for RIE products



RIE Domes



BTE Domes





Interton Fitting software offers

Fitting options that help meet specialised needs, including severe to profound hearing loss and users suffering from tinnitus

New technology, familiar fitting

The amazing upgrades of the Interton Move family go hand-in-hand with simple and well-known controls and tools.

Interton Move opens your business to a wider client base and helps you upgrade existing users, so it's a good thing that the fitting software is simple, intuitive and the same as Interton Ready. This helps you serve your clients with an equal amount of care and efficiency, rather than having to re-learn systems.

And yet, Interton Fitting software has improved to make your daily life more efficient and lead to more client satisfaction. Interton Fitting software

has a new and unique personalised feature prescriptions to give you a better starting point with the feature settings in Interton Move. It helps to decrease the need for fine-tuning, from the first fit and beyond.

Seamless client on-boarding is the other half of a successful fitting process. Our onboarding support tools are designed to help you give your clients the best possible experience with their new hearing aids.

The screenshot displays the Interton Fitting 1.11 software interface. The top menu bar includes File, Edit, View, Instrument, Fitting, and Help. The main window is divided into several sections:

- Patient Information:** Shows the patient's name, Doris Morrison, and her status as a First Time User.
- Instruments:** Displays two connected hearing aids, Right and Left, both using M1651-DRWC RIE 2MP Receivers. Each has a Mute button.
- Media Player:** Includes a Collapse Sidebar button.
- Fitting Section:** Features two graphs showing frequency response (125 to 8K Hz) and gain adjustments. The left graph is for the Right ear (red) and the right graph is for the Left ear (blue). Both show a similar gain profile across frequencies.
- Advanced Features:** Includes controls for Directionality (set to Integrated), Time Constants (Syllabic), Pre-set feedback manager (On/Off), Adaptive Noise Reduction (Off), and Adaptive Wind Noise Reduction (Off).
- Bottom Bar:** Contains buttons for Calibrate Feedback Manager, Pair Accessories, and Save.

Custom

Form factor overview



	CIC-W	ITC	ITE
Fitting range			
Technology levels	6 - 4 - 3	6 - 4 - 3	6 - 4 - 3
4 GHz wireless connectivity	●	●	●
Receiver power levels	LP - MP - HP	MP - HP - UP	MP - HP - UP
Full-on gain ¹ (50 dB SPL input) (HFA)	49 - 59 - 69	59 - 69 - 78	59 - 69 - 78
Max output ¹ (50 dB SPL input) (HFA)	124 - 128 - 130	128 - 130 - 137	128 - 130 - 137
Battery size	10A	312	312 / 13
Push button	Optional	Optional	Optional
Volume control			Optional
Dual microphone		●	●
Telecoil		Optional	Optional
Nano-coating	●	●	●
IP Classification			

1: IEC60118-0 IEC 711 Ear simulator

FOR COSTUMS

- Low power
- Medium power
- High power
- Ultra power

RIE (Receiver-In-the-Ear)

Form factor overview



	RHI 61	RIE 61	RIE 62
Fitting range			
Technology levels	6 - 4	6 - 4 - 3 - 2	6 - 4 - 3 - 2
4 GHz wireless connectivity	●	●	●
Receiver power levels	LP - MP - HP - UP	LP - MP - HP - UP	LP - MP - HP - UP
Full-on gain ¹ (50 dB SPL input) (HFA)	62 - 67 - 74 - 82	62 - 67 - 74 - 82	62 - 67 - 74 - 82
Max output ¹ (50 dB SPL input) (HFA)	123 - 125 - 129 - 136	123 - 125 - 129 - 136	123 - 125 - 129 - 136
Battery size	Rechargeable Lithium-ion	312	13
Push button	●	●	Multifunctional button
Volume control			
Dual microphone	●	●	●
Telecoil			●
Nano-coating	●	●	●
IP Classification	IP 68	IP 68	IP 68

1: IEC60118-0 IEC 711 Ear simulator

FOR RIE

- Low power
- Medium power
- High power
- Ultra power

BTE (Behind-the-Ear)

Form factor overview



	Mini BTE 65 (Open)	Mini BTE 65 (Closed)
Fitting range	<p>The graph plots Frequency [Hz] on the x-axis (250, 500, 1000, 2000, 4000, 8000) and Hearing level [dB] on the y-axis (0, 20, 40, 60, 80, 100, 120). The 'Open' configuration (lighter grey) shows a hearing level range from approximately 20 dB at 250 Hz to 80 dB at 8000 Hz. The 'Closed' configuration (darker grey) shows a hearing level range from approximately 40 dB at 250 Hz to 100 dB at 8000 Hz.</p>	
Technology levels	6 - 4 - 3 - 2	
4 GHz wireless connectivity	●	●
Power levels / Fitting Configuration	Open	Closed (plastic hook)
Full-on gain ¹ (50 dB SPL input) (HFA)	60	65
Max output ¹ (50 dB SPL input) (HFA)	127	130
Battery size	312	312
Push button	●	●
Volume control		
Dual microphone	●	●
Telecoil	●	●
Nano-coating	●	●
IP Classification	IP 68	IP 68

1: IEC60118-0 IEC 711 Ear simulator

For Mini BTE and BTE

Open
 Closed



BTE 70 (Open)	BTE 70	Power BTE 80	Super Power BTE 90
6 - 4 - 3 - 2	6 - 4 - 3 - 2	6 - 4 - 3 - 2	6 - 4 - 3 - 2
●	●	●	●
Open	Closed (plastic hook)	Metal hook	Plastic hook
63	66	80	86
131	134	141	144
13	13	13	675
●	●	●	●
●	●	●	●
●	●	●	●
●	●	●	●
●	●	●	●
IP 68	IP 68	IP 68	IP 68

Feature overview

Feature Name	
Sound Quality	Number of Channels
	Environmental Classifier
	Input dynamic range - 116 dB SPLw
Listening Comfort	Adaptive Noise Reduction
	Adaptive Wind Noise Reduction
	Microphone Noise Reduction
	Impulse Noise Reduction
	Environmental Gain Tuner
Speech Understanding	Integrated Directionality
	Automatic Beamwidth
	Combined Directionality
	Synchronised Auto-Steered Directionality
	Selectable Beamwidth
	Speech-Focused Directionality
Feedback Management	Feedback Manager Plus
	Music Mode
	Preset Feedback Manager
Onboarding	Synchronized Acclimatization Manager
	Acclimatization Manager
Convenience	Ear-to-Ear communication (Push Button, Volume Control)
	AutoPhone
	Comfort Phone
	Direct audio streaming from iOS devices
	Direct audio streaming from Android devices
	Interton Remote Control 2
	Interton TV Streamer 2
	Interton Phone Clip 2
	Interton Multi Mic
	Interton Micro Mic
	Interton Sound app
	Remote Firmware Update
	Desktop charger
Fitting Flexibility	Number of Programs
	Low Frequency Boost (only available in UP receiver)
	TSG
	Datalogging
	Wireless fitting with Noahlink Wireless

Interton. Part of something bigger.

Interton is part of GN, a company dedicated to making life sound better through intelligent audio solutions that let you hear more, do more and be more than you ever thought possible.

We are the only company in the world with medical-, professional- and consumer-grade audio technology under one roof. This gives us unprecedented knowledge of hearing and the human ear.

Ever since we were established 150 years ago, GN has been at the forefront of technology, laying the first submarine cable linking East to West by telegraph (if you like, the precursor of to the internet), and this pioneering spirit burns just as brightly today. For example, we were the first to introduce 2.4 GHz wireless connectivity, Made for iPhone and many other innovations that benefit people with hearing loss worldwide.

By being part of the GN Group, Interton continues to benefit from 150 years of experience and a tradition of delivering leading innovations in hearing solutions.

Help your clients hear better and smile more with Interton

Interton A/S | Lautrupbjerg 7 | DK-2750 Ballerup
Tel: +45 4575 1111 | www.interton.com