



RESIGHT Family from ZEISS

Enjoy the beautiful landscape of the retina

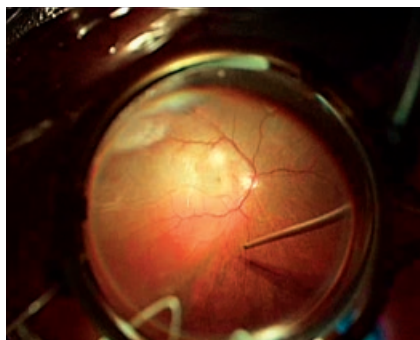


We make it visible.

ZEISS RESIGHT 500 & ZEISS RESIGHT 700

Fundus viewing systems with even better optical quality*

The ZEISS RESIGHT® family fundus viewing systems allow the retinal surgeon to clearly recognize every detail of the retina.



No refocusing

With the ZEISS RESIGHT Family, it is no longer necessary to refocus when the fundus viewing system is moved into or out of position. The varioscope optics of the ZEISS RESIGHT Family ensure that the microscope always stays in the same focal plane.

Patients' health is our no. 1 priority

A safety distance of up to 11 cm** ensures the fundus viewing system will automatically fold up if unintended contact is made with the patient's eye.

Smooth workflow

Hands-free focusing with RESIGHT 700, the wireless foot control panel (FCP WL) and automatic inversion with Invertertube E provide for a smooth workflow allowing more focus on the patient.



A small turn for a different view

Fast, convenient and sterile access to a second lens is possible due to the innovative lens turret. A small turn is all that is needed for a different view – between wide field and high magnification.

Mechanical data of ZEISS RESIGHT 500 and ZEISS RESIGHT 700

Focusing range	with lens holder LH175/LH200 31 mm/38 mm (position of the intermediate image)
Lens joint/holder rotation angle	joint: 0°–360° (in 90° increments)/holder: 0°–360° (in 30° increments)
Weight	ZEISS RESIGHT 500: 0.45 kg / ZEISS RESIGHT 700: 0.50 kg
Adapter plate	with ZEISS VISULUX adapter: 0.081 kg/without ZEISS VISULUX adapter: 0.033 kg
Dimensions (L x W x H)	138 x 128 x 198 mm (out of beam path)/200 x 128 x 198 mm (in beam path)



Carl Zeiss Meditec AG
Goeschwitzer Strasse 51–52
07745 Jena
Germany
www.zeiss.com/med



* Second generation optics with clearly better overall optical quality and clearly better sharpness, depth and detail recognition for use with the 60D lens – clinical customer survey with international key opinion leader surgeons.

** With lens holder LH200