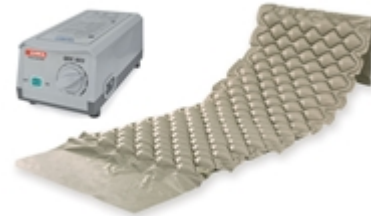




GIMA

BUBBLE AIR MATTRESS + COMPRESSOR (28564+28565)

Code: 28566
Category: Intensive care anti-decubitus mattresses
Unit of sale: 1 kit
Minimum order: 1
Type: Medical device
Class: I
NSIS: 817830
CND: Y033399
EAN13: 8023279285666



Description:

- **BUBBLE MATTRESS**
Designed for the treatment and prevention of pressure sore stage I in short-term and domiciliary therapies. The PVC mattress is composed of 130 7 cm-high bubble cells, particularly comfortable. Fixable to bed by extra flaps on both top and bottom side. Cold-resistant -30 degrees.
Flaps length: 50+50 cm (top + bottom).

- **PUMP SYSTEM**
Special silent pump for an excellent pressure regulation by a knob on the front panel. It can be hung to any kind of hospital bed frame by means of two adjustable hooks. For use with bubble or alternating cell mattresses.

Technical Specifications:

Bubble mattress:

- Total size: 200 x 90 x 7 cm
- Cell height: 7 cm (2.7")
- Material: PVC
- Thickness: 0.32 mm
- Number of cells: 130
- Suitable for persons up to: 135 kg

Pump system:

- Size: 25 x 12 x h 10 cm
- Operating voltage: 220 V, 50 Hz
- Working pressure: 40-100 mmHg
- Air output: 6-7 liter/min
- Cycle time: 6 min
- Plastic casing: Taiwan chimei ABS
- TUV-CE IEC/EN60601-1; 60601-1-2