



Guide wires.

The reliable choice for stent placements and ERCP.

All guide wires are manufactured out of bending-resistant and torsion-proof Nitinol. Owing to their hydrophilic tips, the wires safely find their way even into areas and stenoses which are hard to reach. This is supported by the wire's high rigidity and controllability. Hence the guide wires cannot only be applied in sophisticated stent placements, they are also per-

factly suited for ERCP. The high radiopacity of the flexible hydrophilic tip ascertains an exact placement of stents under visual radiological control. Two different series are available: the Classic-series made in Germany and the Eco-series from MICRO-TECH as a cost-efficient alternative.

Specific characteristics:

- non-kinking nitinol wire
- high level of rigidity and guidability
- hydrophilic, atraumatic tip
- special design for OTW and Y-stents
- high level of radiopacity



Wire with straight tip

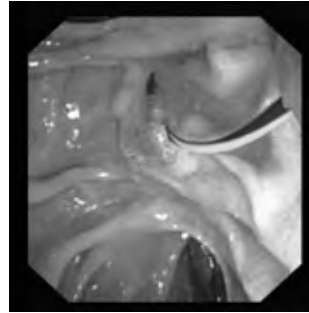


Wire with J-tip



Successful in practical routine work.

Bending resistance and rigidity account for the very good feeding properties of guide wires. In daily applications they convince by their precision, which is primarily guaranteed by the efficient transmission of the rotatory and translatory motion all the way to the tip of the wire, as applied by the surgical assistant. This makes it possible to reach into even anatomically difficult passages with ease. In addition, the tip of each wire can be perfectly seen in the X-ray control image, allowing for optimal stent positioning.



Endoscopic view



X-ray

Dispenser for easy operation.

The wire can be easily ejected and retracted by means of this innovative dispenser. Owing to its compact design, the dispenser is handy and easy to operate. Rinsing the wire is also easy and fast when using the dispenser.



Dispenser Classic guide wires



Dispenser Eco guide wires

REF	Ø inches	Total length mm	Tip length mm	Tip form	Set-up	Covering
Classic guide wire						
GW11-207.035.260	0,035"	2600	130	straight	hydrophilic, radiopaque	extra stiff
GW11-207.035.420	0,035"	4200	130	straight	hydrophilic, radiopaque	extra stiff
GW11-210.035.200	0,035"	2000	50	straight	radiopaque	black covering
GW11-213.035.200	0,035"	2000	50	straight	radiopaque	black-yellow covering
GW11-216.025.450	0,035"	4500	65	straight	hydrophilic, radiopaque, marks	black covering
GW11-222.035.450	0,035"	4500	85	straight	hydrophilic, radiopaque	blue-yellow covering
GW11-223.035.450	0,035"	4500	85	J-tip	hydrophilic, radiopaque	blue-yellow covering
GW11-225.035.450	0,035"	4500	50	straight	hydrophilic, radiopaque	blue-yellow covering
GW11-226.035.450	0,035"	4500	50	J-tip	hydrophilic, radiopaque	blue-yellow covering
Eco guide wire						
MTN-BM-89/45-A	0,035"	4500	60	straight	hydrophilic, radiopaque	blue-yellow covering
MTN-BM-89/45-A-J	0,035"	4500	60	J-form	hydrophilic, radiopaque	blue-yellow covering
MTN-BM-89/26-A	0,035"	2600	60	straight	hydrophilic, radiopaque	blue-yellow covering
MTN-BM-89/26-A-J	0,035"	2600	60	J-form	hydrophilic, radiopaque	blue-yellow covering
MTN-BM-63/45-A	0,025"	4500	60	straight	hydrophilic, radiopaque	blue-yellow covering
MTN-BM-63/45-A-J	0,025"	4500	60	J-form	hydrophilic, radiopaque	blue-yellow covering
MTN-BM-63/26-A	0,025"	2600	60	straight	hydrophilic, radiopaque	blue-yellow covering
MTN-BM-63/26-A-J	0,025"	2600	60	J-form	hydrophilic, radiopaque	blue-yellow covering
MTN-BM-53/45-A	0,021"	4500	60	straight	hydrophilic, radiopaque	blue-yellow covering
MTN-BM-45/45-A	0,018"	4500	60	straight	hydrophilic, radiopaque	blue-yellow covering

Packaging unit: GW11: 1 piece, MTN-BM: 2 pieces

