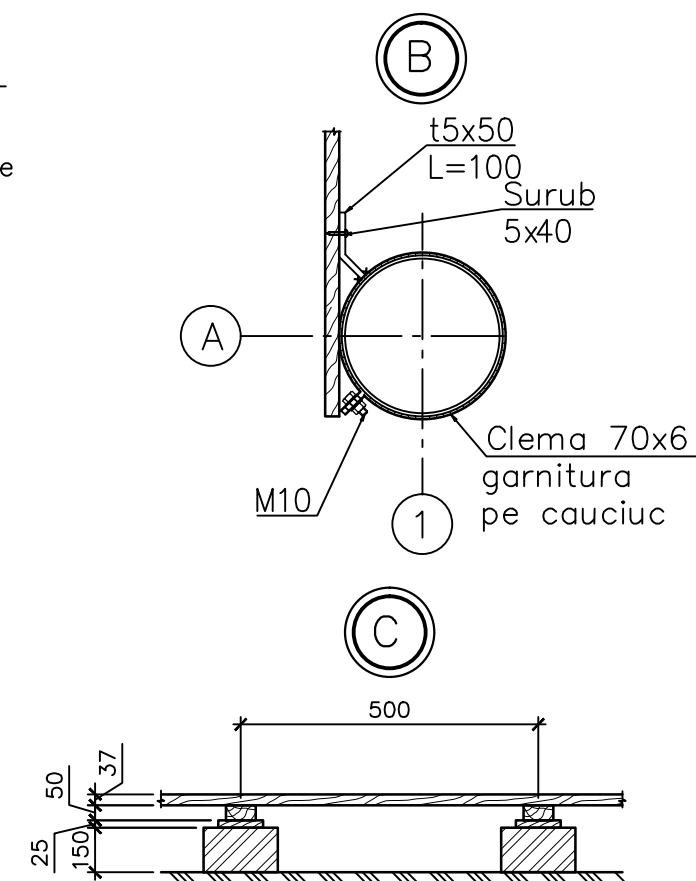
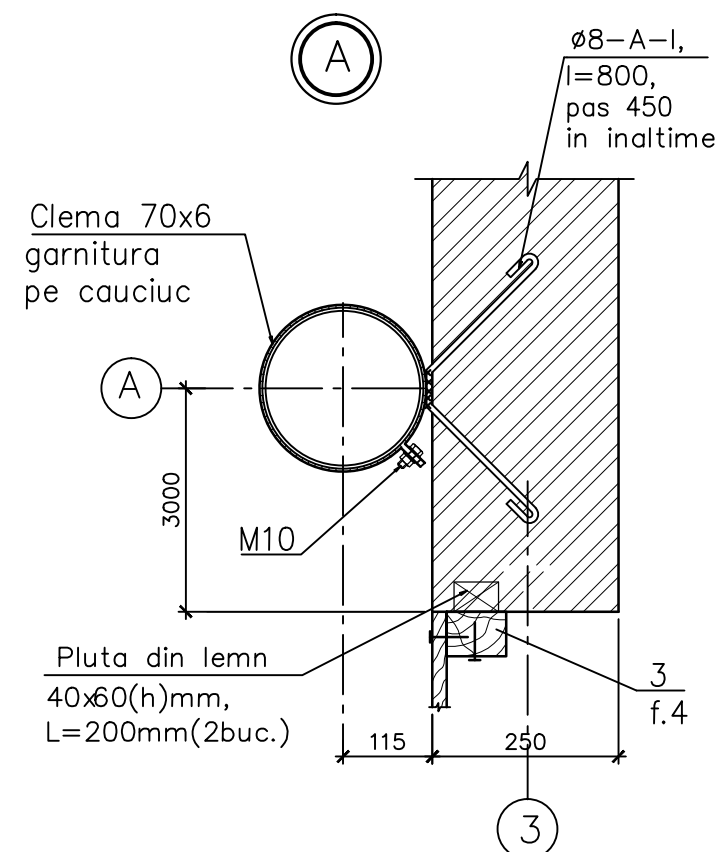
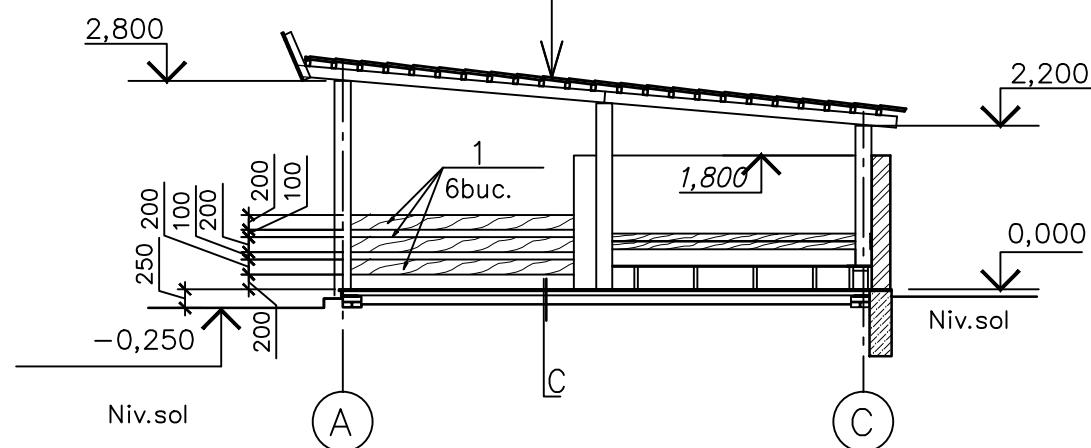


The architectural floor plan shows a central square room (Room 0,000) with a side length of 6220 mm. This room is surrounded by a corridor that is 330 mm wide. The corridor has a total width of 330 mm + 240 mm + 330 mm = 900 mm. The corridor is further defined by a 250 mm wide structural element. The overall dimensions of the building are 7000 mm by 7000 mm. The plan includes a grid system with columns labeled 1, 2, 3 and rows labeled A, B, C. The grid lines are spaced at 3000 mm intervals. The plan also shows a central square room (Room 0,000) with a side length of 6220 mm. The room is surrounded by a corridor that is 330 mm wide. The corridor has a total width of 330 mm + 240 mm + 330 mm = 900 mm. The corridor is further defined by a 250 mm wide structural element. The overall dimensions of the building are 7000 mm by 7000 mm. The plan includes a grid system with columns labeled 1, 2, 3 and rows labeled A, B, C. The grid lines are spaced at 3000 mm intervals. The plan also shows a central square room (Room 0,000) with a side length of 6220 mm. The room is surrounded by a corridor that is 330 mm wide. The corridor has a total width of 330 mm + 240 mm + 330 mm = 900 mm. The corridor is further defined by a 250 mm wide structural element. The overall dimensions of the building are 7000 mm by 7000 mm. The plan includes a grid system with columns labeled 1, 2, 3 and rows labeled A, B, C. The grid lines are spaced at 3000 mm intervals.

Tigla metalica

Grinda 60x80(h) pas 350mm

Capriori 120x150(h)



Talpa din lemn, (pas 1000mm)	-50mm
------------------------------	-------

Garnitura	–placi 150x25x200mm	–25mm
-----------	---------------------	-------

Ruberoid sau carton gudrant -2 straturi

Stilp din caramida pe mortar de ciment

si nisip	marca M25	-150mm
----------	-----------	--------

Strat de petris	−50mm
-----------------	-------

Sol tasat, $\gamma > 1,6 \text{ t/m}^3$

						0610/2021			
						Pavilion pentru copii la gradinite subordonate DETS sectorului Buiucani mun.Chisinau			
Sch.	Cant.	Foaia	N doc.	Semn.	Data				
						Sopron parasolar-tip-1	Eta	Foaia	Foi
							S.P.	2	
AŞP		Sava I.			10.21				
Sp.princ.		Svet I			"				
						Plan.Sectiune 1–1.Noduri	SRL"PROI-DEVI" mun.Chisinau		