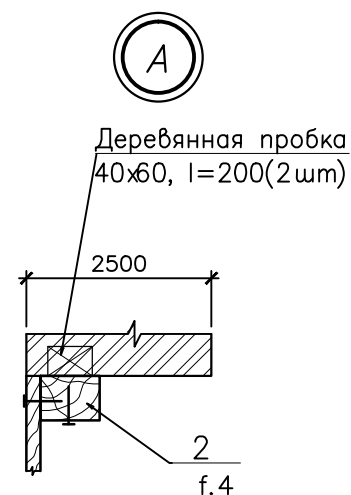
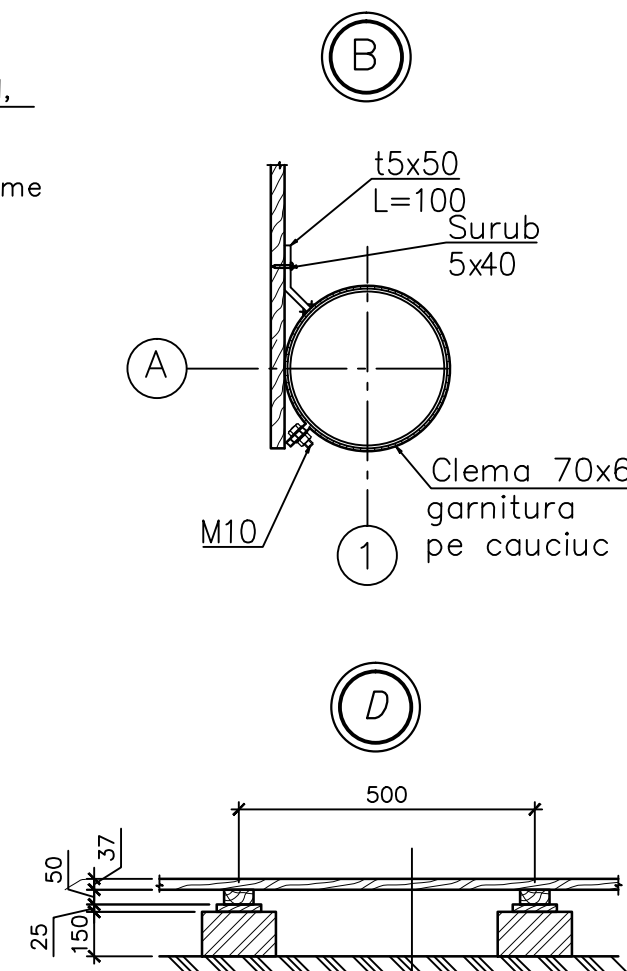
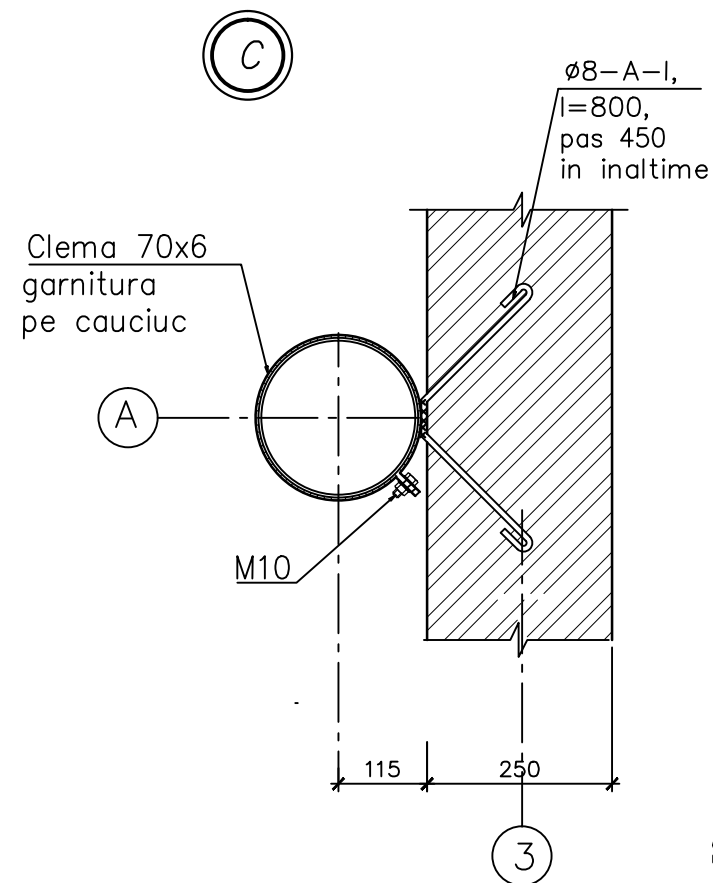
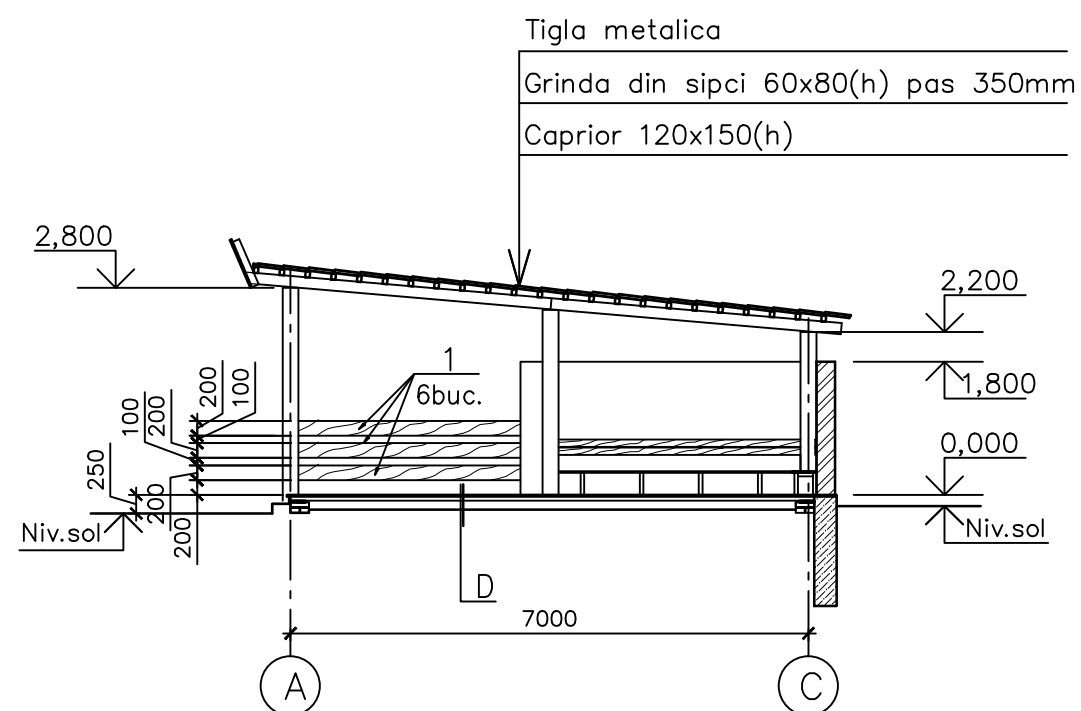


Sectione 1-1  
S=vezi f.4 si f.8



Acoperire-placi de lemn GOST 8242-75 -37mm  
Talpa din lemn, (pas 1000mm) -50mm  
Garnitura -placi 150x25x200mm -25mm  
Ruberoid sau carton gudrant -2 straturi  
Stilp din caramida pe mortar de ciment  
si nisip marca M25 -150mm  
Strat de petris -50mm  
Sol tasat,  $\gamma > 1,6t/m^3$

						0510/2021			
						Pavilion pentru copii la gradinite subordonate DETS sectorului Buiucani mun.Chisinau			
Sch.	Cant.	Foaia	N doc.	Semn.	Data	Sopron parasolar-tip-2	Etapă	Foaia	Foi
AŞP		Sava I.			10.21		S.P.	2	
Sp.princ.		Svet I			"	Plan.Sectione 1-1.Noduri	SRL"PROI-DEVI" mun.Chisinau		