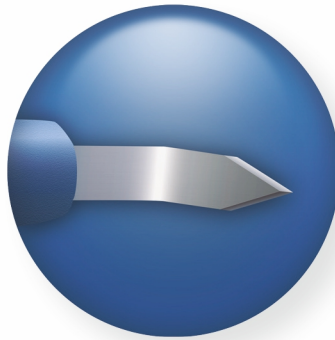


Ophthalmic Surgical Blades

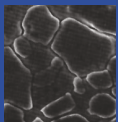
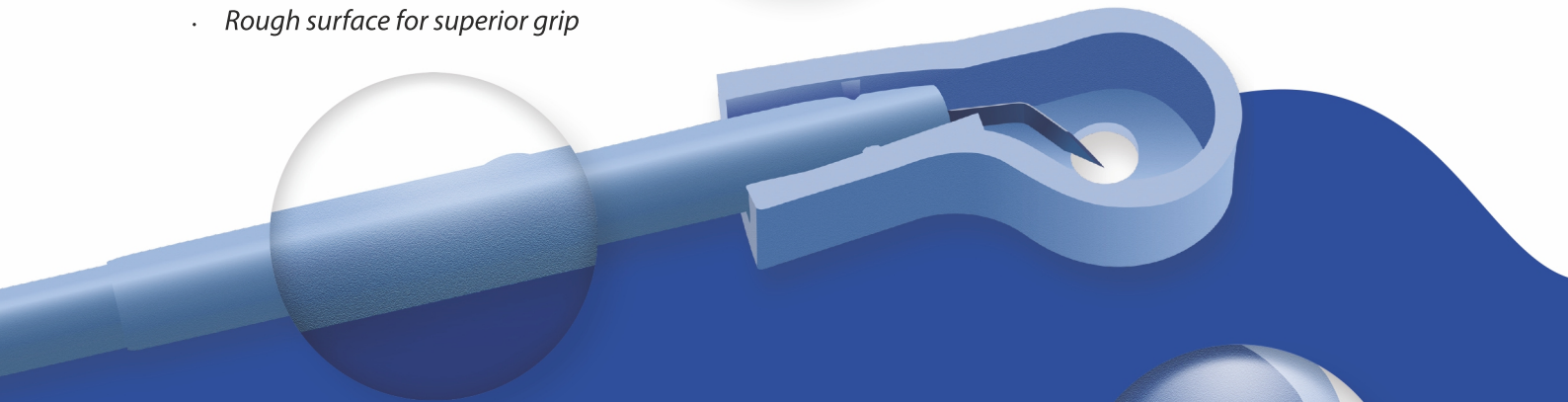
# *aurosleek*

*An Edge Beyond Sharpness*

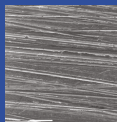


- Electro polished surface
- Medical grade SS
- Thin profile blades
- Machined on CNC grinding machine

- Polycarbonate handle
- Rough surface for superior grip



Raw stainless steel sheet from mill

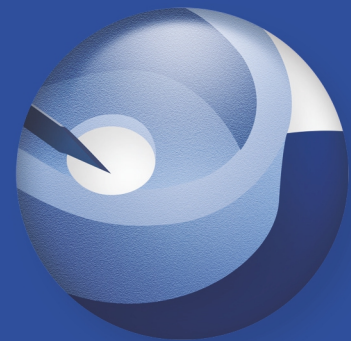


Mechanically polished stainless steel



Smooth electro polished stainless steel

- Easy to use tip guard
- Unique & ergonomic design



AUROLAB is fully committed to the enhancement of “incision architecture” through innovative, high-quality and cost-effective knives branded as AUROSLEEK – TIP GUARDED BLADES.

	Features	Advantages	Benefits
Design	Thin profile	Superior wound construction	<ul style="list-style-type: none"> <li>· Minimal wound leakage</li> <li>· Quick sealing post-surgery</li> </ul>
	Tip guard	Protects the tip and unique design	<ul style="list-style-type: none"> <li>· No damage during logistics/ handling</li> <li>· Easy to hold and use for surgeons/ OT staffs</li> </ul>
Process	CNC grinding	High accuracy and consistent outcomes	<ul style="list-style-type: none"> <li>· Less penetration force/ No tissue drag</li> <li>· Consistent quality &amp; performance</li> </ul>
	Electro-polishing	Uniformly well-polished and matt finish	<ul style="list-style-type: none"> <li>· Same feel in every blade</li> <li>· Glare free</li> </ul>
Material	Medical grade stainless steel	Resistant to corrosion	<ul style="list-style-type: none"> <li>· Safety to patients</li> </ul>
Primary Packing	Blister packing in clean room	Superior sealing and low bioburden levels	<ul style="list-style-type: none"> <li>· Assured sterility</li> <li>· Safety to patients</li> </ul>
Secondary packing	Carton box design	First time with viewing pane & sliding slot	<ul style="list-style-type: none"> <li>· Compact &amp; Convenient</li> </ul>

**Product Code | Specifications**

SIDE PORT/ STAB BLADES	
L15022HT	15 degree straight side port with handle
S10015HT	1.0 mm, straight side port with handle
S11015HT	1.1 mm, straight side port with handle
S11215HT	1.1 mm, angled, bevel up with handle
S13015HT	1.3 mm, straight side port with handle
S13215HT	1.3 mm, angled, bevel up with handle
S16015HT	1.6 mm, straight side port with handle
S17015HT	1.7 mm, straight side port with handle
S17215HT	1.7 mm, angled, bevel up with handle

**KERATOME BLADES/ SLIT BLADES**

K11215HT	1.1 mm, angled, bevel up with handle
K17215HT	1.7 mm, angled, bevel up with handle
K22215HT	2.2 mm angled bevel up with handle
K24215HT	2.4 mm angled bevel up with handle
K24315HT	2.4 mm, angled, bevel down with handle
K26215HT	2.6 mm angled bevel up with handle
K26315HT	2.6 mm, angled, bevel down with handle
K275215HT	2.75 mm angled bevel up with handle
K275315HT	2.75 mm, angled, bevel down with handle
K28215HT	2.8 mm angled bevel up with handle
K28315HT	2.8 mm angled bevel down with handle
K30215HT	3.0 mm angled bevel up with handle
K30315HT	3.0 mm angled bevel down with handle
K32215HT	3.2 mm angled bevel up with handle
K32315HT	3.2mm, angled, bevel down with handle

**Product Code | Specifications**

**CRESCENT BLADES**

C25222HT	2.5 mm angled bevel up with handle
----------	------------------------------------

**IMPLANT BLADES**

I52215HT	5.2 mm angled bevel up with handle
I52315HT	5.2 mm angled bevel down with handle

**MVR BLADES**

R19015HC	19G MVR Straight with handle
R19415HC	19G MVR Angled with handle
R20012HC	20G MVR Straight with handle
R20412HC	20G MVR Angled with handle



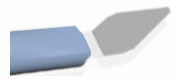
**SIDEPORT**



**KERATOME**



**CRESCENT**



**IMPLANT**



**Dual Bevel Ranges**

**KERATOME BLADES**

Product Code	Specifications
KD11215HT	1.1 mm, angled, dual bevel up
KD11315HT	1.1 mm, angled, dual bevel down
KD17215HT	1.7 mm, angled, dual bevel up
KD17315HT	1.7 mm, angled, dual bevel down
KD22215HT	2.2 mm, dual bevel up
KD24215HT	2.4 mm, angled, dual bevel up
KD24315HT	2.4 mm, angled, dual bevel down
KD26215HT	2.6 mm, angled, dual bevel up
KD26315HT	2.6 mm, angled, dual bevel down
KD275215HT	2.75 mm, angled, dual bevel up
KD275315HT	2.75 mm, angled, dual bevel down
KD28215HT	2.8 mm, angled, dual bevel up
KD28315HT	2.8 mm, angled, dual bevel down
KD30215HT	3.0 mm, angled, dual bevel up
KD30315HT	3.0 mm, angled, dual bevel down
KD32215HT	3.2mm, angled, dual bevel up
KD32315HT	3.2mm, angled, dual bevel down

**SIDE PORT BLADES**

Product Code	Specifications
SD10015HT	1.0 mm, straight dual bevel
SD10215HT	1.0 mm, angled dual bevel
SD11015HT	1.1 mm, straight dual bevel
SD11215HT	1.1 mm, angled, dual bevel up
SD11315HT	1.1 mm, angled, dual bevel down
SD13015HT	1.3 mm, straight dual bevel
SD13215HT	1.3 mm, angled dual bevel up
SD16015HT	1.6 mm, straight dual bevel
SD16215HT	1.6 mm, angled dual bevel
SD17015HT	1.7 mm, straight dual bevel
SD17215HT	1.7 mm, angled, dual bevel up
SD17315HT	1.7 mm, angled, dual bevel down

Information published in this catalogue is subject to change without notification

No.1, Sivagangai Main Road, Veerapanjan, Madurai 625 020, India

Phone: +91 452 3096100 · Fax: +91 452 2446200

E-mail: info@aurolab.com · Web: www.aurolab.com

