



# DILATION BALLOONS

## SIMPLY EXPAND RELIABLY AND EFFECTIVELY

The dilation balloons from MICRO-TECH stand for maximum quality. MICRO-TECH produces all the dilation balloons itself – using state-of-the-art European and American production technology. Two x-ray markings indicate the exact working length of the balloon, thereby ensuring its precise positioning. Under application of pressure, the

balloon is rapidly filled to acquire its predefined expansion width. Furthermore, the high-pressure design ensures the balloon retains its shape over the entire working length, thereby allowing optimum dilation success. All balloons are available as TTS (through-the-scope) systems up to a diameter of 18 mm and a catheter length of 1800 mm.

### SPECIFIC CHARACTERISTICS

- Dimensionally stable high pressure design
- 2 X-ray markers on opposite ends to indicate the exact working length of the balloon
- Separate guide wire and insufflation lumens
- Conical shaped catheter tip
- Rapid expansion
- Constant dilation over the entire length
- Guide-wire compatible up to 0.035 inches



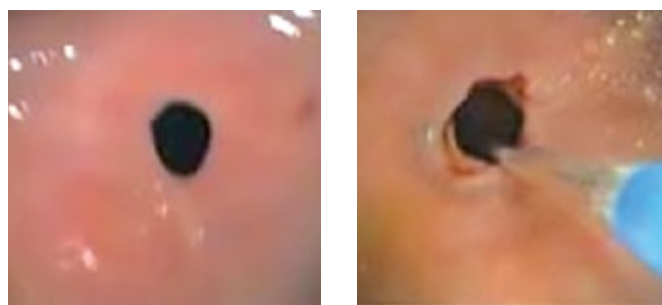
X-ray marking



Conical tip

## SUCCESSFUL IN PRACTICAL USE

Stenoses are effectively dilated using the MICRO-TECH dilation balloons. The balloon dilates the stenosis safely and gently and prepares the area to be treated in an optimum manner. The uniform distribution of pressure over the entire working length of the balloon and the outstanding dimensional stability during dilation guarantee excellent therapeutic success over the entire length of the stenosis.



Endoscopic control during dilation therapy

## SPECIFICATIONS

REF	Balloon Ø mm	Balloon length mm	Catheter Ø fr.	Catheter length mm	Channel Ø mm	Application
<b>TTS – DILATION BALLOONS</b>						
BDC-8/55-7/18	8	55	7	1800	2.8	oesophagus/bile duct
BDC-8/55-7/24	8	55	7	2400	2.8	pylorus/colon
BDC-10/55-7/18	10	55	7	1800	2.8	oesophagus/bile duct
BDC-10/55-7/24	10	55	7	2400	2.8	pylorus/colon
BDC-12/55-7/18	12	55	7	1800	2.8	oesophagus
BDC-12/55-7/24	12	55	7	2400	2.8	pylorus/colon
BDC-16/55-7/18	16	55	7	1800	2.8	oesophagus
BDC-16/55-7/24	16	55	7	2400	2.8	pylorus/colon
BDC-18/55-7/18	18	55	7	1800	2.8	oesophagus
BDC-18/55-7/24	18	55	7	2400	2.8	pylorus/colon
BDC-20/55-7/18	20	55	7	1800	4.2	oesophagus
BDC-20/55-7/24	20	55	7	2400	4.2	pylorus/colon
BDC-12/80-7/18	12	80	7	1800	2.8	oesophagus
BDC-12/80-7/24	12	80	7	2400	2.8	pylorus/colon
BDC-16/80-7/18	16	80	7	1800	2.8	oesophagus
BDC-16/80-7/24	16	80	7	2400	2.8	pylorus/colon
BDC-18/80-7/18	18	80	7	1800	2.8	oesophagus
BDC-18/80-7/24	18	80	7	2400	2.8	pylorus/colon
BDC-20/80-7/18	20	80	7	1800	4.2	oesophagus
BDC-20/80-7/24	20	80	7	2400	4.2	pylorus/colon
<b>ACHALASIE-BALLOONS</b>						
BDC-26/80-7/10	26	80	7	1000	–	Achalasie
BDC-30/80-7/10	30	80	7	1000	–	Achalasie
BDC-34/80-7/10	34	80	7	1000	–	Achalasie
<b>FIXED WIRE BALLOONS</b>						
FWB-06/80-6/18-M	6-7-8	80	6	1800	2.8	Upper/lower GI
FWB-08/80-6/18-M	8-9-10	80	6	1800	2.8	Upper/lower GI
FWB-10/80-6/18-M	10-11-12	80	6	1800	2.8	Upper/lower GI
FWB-12/80-6/18-M	12-13.5-15	80	6	1800	2.8	Upper/lower GI
FWB-15/80-6/18-M	15-16.5-18	80	6	1800	2.8	Upper/lower GI
FWB-18/80-6/18-M	18-19-20	80	6	1800	2.8	Upper/lower GI

Packaging unit: 1 piece / suitable for guide wires with 0.035"