

# JCMX MULTICORE CABLE

The JCMX IP multicore cable is suitable for installations in marine and harsh environments.

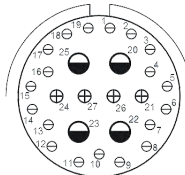
The cable offers a mix of auxiliary cores which make this cable ideal for most Jaegar NexOS IP camera installations.

The cable is available as a cable tail for the Silent Sentinel Jaegar IP platform solutions with lengths between 3 and 25m available.

PIN	FUNCTION*	TYPE*	CONDUCTOR
1	Ethernet B1 (D-) (Through)	Ethernet Bundle (Blue)	Cat5e Brown
2	Ethernet B2 (D+) (Through)	Ethernet Bundle (Blue)	Cat5e White/Brown
3	Ethernet B3 Rx- (B-) (Through)	Ethernet Bundle (Blue)	Cat5e Green
4	Ethernet B4 Rx+ (B+) (Through)	Ethernet Bundle (Blue)	Cat5e White/Green
5	Ethernet B5 (C+) (Through)	Ethernet Bundle (Blue)	Cat5e Blue
6	Ethernet B6 (C-) (Through)	Ethernet Bundle (Blue)	Cat5e White/Blue
7	Ethernet B7 Tx- (A-) (Through)	Ethernet Bundle (Blue)	Cat5e Orange
8	Ethernet B8 Tx+ (A+) (Through)	Ethernet Bundle (Blue)	Cat5e White/Orange
9	Telemetry (+)	RS-485	Yellow
10	Telemetry (-)	RS-485	Blue
11	Earth / Chassis	Earth	Green/Yellow Stripe
12	Ethernet A1 (R-)	Ethernet Bundle (Grey)	Cat5e Brown
13	Ethernet A2 (R+)	Ethernet Bundle (Grey)	Cat5e White/Brown
14	Ethernet A3 Rx- ( )	Ethernet Bundle (Grey)	Cat5e Green
15	Ethernet A4 Rx+ ( )	Ethernet Bundle (Grey)	Cat5e White/Green
16	Ethernet A5 (T+)	Ethernet Bundle (Grey)	Cat5e Blue
17	Ethernet A6 (T-)	Ethernet Bundle (Grey)	Cat5e White/Blue
18	Ethernet A7 Tx- ( )	Ethernet Bundle (Grey)	Cat5e Orange
19	Ethernet A8 Tx+ ( )	Ethernet Bundle (Grey)	Cat5e White/Orange
20	Power Positive (PTZ) 48vDC	Power DC	Red (doubled connectors at tail with sleeve)
21	Power Positive (PTZ) 48vDC	Power DC	Orange (doubled connectors at tail with sleeve)
22	Power DC (Through)	Power DC 2.5mm CSA	Brown
23	Power DC (Through)	Power DC 2.5mm CSA	Blue
24	-	-	-
25	Power Negative / 0V (PTZ) 48vDC	Power DC	Black (doubled connectors at tail with sleeve)
26	Power Negative / 0V (PTZ) 48vDC	Power DC	White (doubled connectors at tail with sleeve)
27	-	-	-

\* Subject to connected device

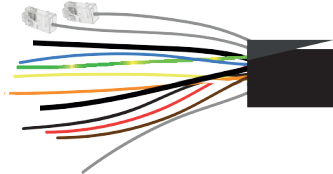
Connector Rear View



Connector (Pre-Terminated)



Connector (Not Pre Terminated)  
(Dressed)



## TECHNICAL SPECIFICATION

Length	XX Metres as-per part code (between 3-25m)
Connector	Amphenol TV06ZN-21-29SN, Circular, 27-way, female contact
Jacket	PUR
Outer Diameter	17mm
MDR (Minimum Bend Radius)	125mm
Pre-Terminated	Includes 1x connector at <u>both</u> ends of the cable (for the camera and PSU connections)
Compliance	RoHS, REACH and UL listed where applicable
IP rating	IP67
Part Number	CA-JCMX-PT-XX

## OPTIONAL

Not Pre-Terminated	Includes 1x connector at the camera end of the cable only
Part Number	CA-JCMX-XX

## TYPICAL CABLE ASSEMBLIES

Illustration of a CA-JCMX-PT-XX Pre-Terminated Cable

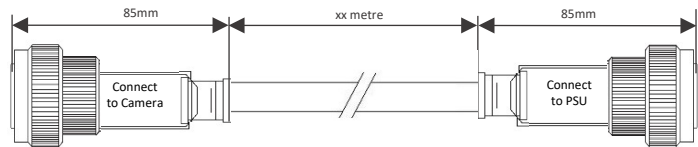
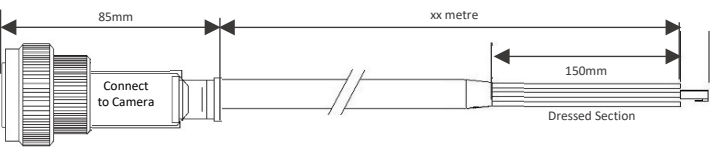


Illustration of a CA-JCMX-XX Not Pre-Terminated Cable (Dressed)



Specifications may be subject to change without notice.  
E&OE 25/03/2025 V4.2

