

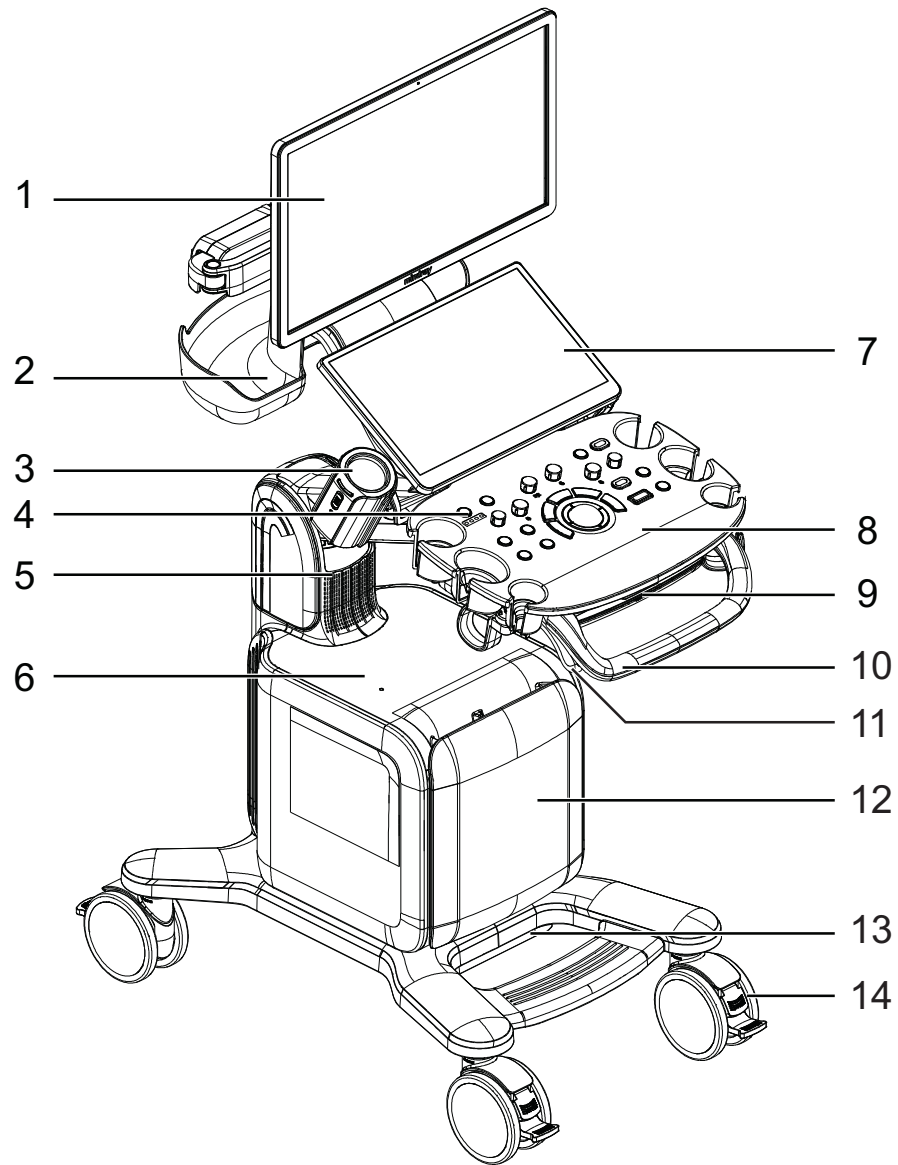
**Consona N8/Consona N8 Pro/Consona
N8 Super/Consona N8P/Consona OR/
Consona N8S/Consona N8T/Consona OI/
Consona OT/Consona OF/Consona OX/
Consona N8K/Consona N8Q/Consona
N8V/Consona N8 Exp/Consona N8 Elite/
Consona N8 Ultra/Consona N8 Plus**

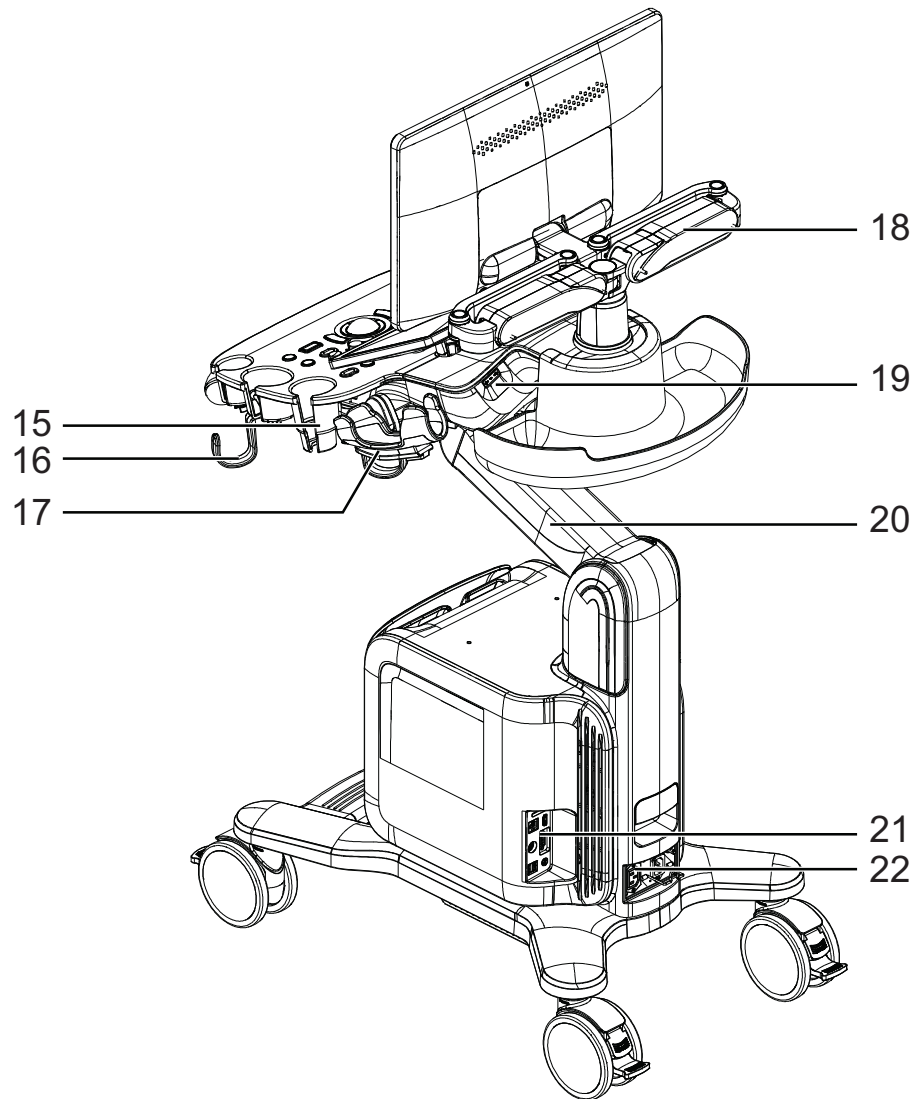
Diagnostic Ultrasound System

Operator's Manual

[Basic Volume]

2.7 Introduction of Each Unit





No.	Item	Description
1.	Monitor	Displays the images and parameters during scanning.
2.	Encircling storage bin	Store something temporarily.
3.	Ultrasound gel warmer	Used for heating the ultrasound gel.
4.	Power button/Power indicator	Used for turning on/ off the power. The indicator lights up when the system is powered on.
5.	Speaker	Outputs the audio.
6.	Placing table	Used for placing the B/W video printer.
7.	Touch screen	Screen-touching operator-system interface or control.
8.	Control panel	Key- pressing operator-system interface or control.
9.	Qwerty keyboard	Used for typing characters or entering some functions.

No.	Item	Description
10.	Handle	Used for pushing and moving the system.
11.	Control panel adjusting lever	Used for lifting or swiveling the control panel.
12.	Front I/O panel	Probe port, ECG Input and Output, Pencil probe port. The front I/O panel cover can be removed.
13.	Dust-proof cover	Prevent dust, particles and sundries from entering the system.
14.	Caster	Used for securing or moving the system.
15.	Transducer& ultrasound gel holder	Used for placing transducers or ultrasound gel temporarily.
16.	Hanger	Used for hanging the probe cables.
17.	Intracavitary probe holder	Used for placing the intracavitary probe.
18.	Monitor support arm	Supports the LCD display and adjusts the position and angle of the LCD display.
19.	USB ports	USB ports
20.	Control panel support arm	Supports the control panel and adjusts the position of the control panel.
21.	Back I/O panel	Interface panel used for inputting and outputting signals.
22.	Power supply panel	Electrical port panel.

2.8 Power Supply Panel

