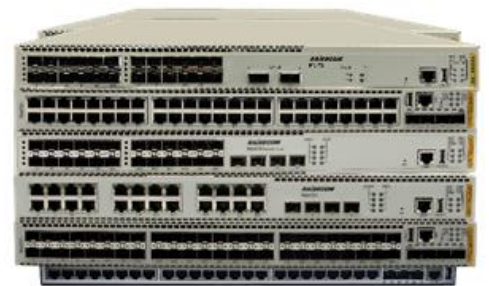


ISCOM S5600G (A) series switch

The ISCOM S5600G (A) series switches are new-generation high-performance, high-interface-density, and high-security energy-saving Layer 3 Ethernet switches independently developed by Raisecom, providing flexible 1000 Mbit/s or 10 Gbit/s access and 10GE/40GE/100GE uplink interfaces. The switch is based on high-performance hardware platforms and the new-generation switching software platform of Raisecom, featuring flexible Ethernet networking, diverse security controls, and easy management. It also supports IPv4/IPv6 dual-stack management and forwarding, static routing protocols, RIP, OSPF, BGP, ISIS, and other routing protocols. Featuring rich management features and security features, it is a 1000 Mbit/s Layer 3 Ethernet switch oriented for converged service networks. It is a product based on Chinese software and hardware platforms. It can be used to build a new intelligent access network with high reliability, easy expansion, and easy management. It can be widely used in scenarios, such as government & enterprise park convergence, campus network convergence, information innovation, and other scenarios.



ISCOM S5600G

Non-PoE switches>>

ISCOM S5600G-24S4X(A)



- Twenty-four 100/1000 Mbit/s SFP optical interfaces
- Four 10 Gbit/s optical interfaces (supporting the 10 Gbit/s SPF+ optical module)
- Console interface and SNMP interface
- Single/Dual power supply: single AC (AC/S); single DC (DC/S); dual AC (AC/D); dual DC (DC/D); AC + DC (AC_DC)

ISCOM S5600G-48S4X(A)



- Forty-eight 100/1000 Mbit/s SFP optical interfaces
- Four 10 Gbit/s optical interfaces (supporting the 10 Gbit/s SPF+ optical module)
- Console interface and SNMP interface
- Single/Dual power supply: single AC (AC/S); single DC (DC/S); dual AC (AC/D); dual DC (DC/D); AC + DC (AC_DC)

ISCOM S5600G-24T4X(A)

- Twenty-four 10/100/1000 Mbit/s electrical interfaces
- Four 10 Gbit/s optical interfaces (supporting the 10

International Headquarters

Raisecom Building, East-11, No.10 Xibeiwang East Road,
Haidian District, Beijing, P.R.China, 100193
Tel: +86 10 8288 3305
Fax: +86 10 8288 3056
www.raisecom.com

North American Headquarters, Raisecom Inc.

6380 N Eldridge Parkway Houston Texas 77041 USA
Tel: 1-888-816-4808
Email: sales@raisecominc.com

Raisecom Technology Co., Ltd.

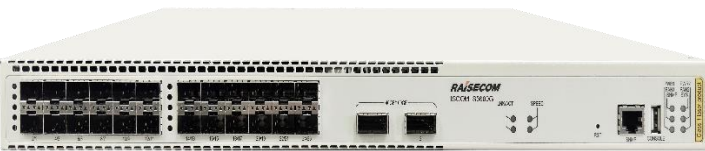
Copyright@1999-2024
All rights reserved
Technical information is subjected to
change without notice



ISCOM S5600G-48T4X(A)



ISCOM S5600G-24X2C(A)



ISCOM S5600G-24T8S6X(A)



ISCOM S5600G-48T6X(A)



Gbit/s SPF+ optical module)

- Console interface and SNMP interface
- Single/Dual power supply: single AC (AC/S); single DC (DC/S); dual AC (AC/D); dual DC (DC/D); AC + DC (AC_DC)
- Forty-eight 10/100/1000 Mbit/s electrical interfaces
- Four 10 Gbit/s optical interfaces (supporting the 10 Gbit/s SPF+ optical module)
- Console interface and SNMP interface
- Single/Dual power supply: single AC (AC/S); single DC (DC/S); dual AC (AC/D); dual DC (DC/D); AC + DC (AC_DC)
- Twenty-four 10 Gbit/s optical interfaces (supporting the 100/1000 Mbit/s SFP optical module and 10 Gbit/s SPF+ optical module)
- Two 100GE QSFP28 optical interfaces
- Console interface and SNMP interface
- Single/Dual power supply: single AC (AC/S); single DC (DC/S); dual AC (AC/D); dual DC (DC/D); AC + DC (AC_DC)
- Twenty-four 10/100/1000 Mbit/s electrical interfaces
- Eight 100/1000 Mbit/s SFP optical interfaces
- Six 10 Gbit/s optical interfaces (supporting the 100/100 Mbit/s SFP optical module and 10 Gbit/s SPF+ optical module)
- One service expansion slot
- Console interface, SNMP interface, and USB interface
- Dual power supplies: dual AC (AC/D); dual DC (DC/D); AC + DC (AC_DC)
- Forty-eight 10/100/1000 Mbit/s electrical interfaces
- Six 10 Gbit/s optical interfaces (supporting the 100/100 Mbit/s SFP optical module and 10 Gbit/s SPF+ optical module)
- One service expansion slot
- Console interface, SNMP interface, and USB interface
- Dual power supplies: dual AC (AC/D); dual DC (DC/D); AC + DC (AC_DC)

International Headquarters

Raisecom Building, East-11, No.10 Xibeiwang East Road,
Haidian District, Beijing, P.R.China, 100193
Tel: +86 10 8288 3305
Fax: +86 10 8288 3056
www.raisecom.com

North American Headquarters, Raisecom Inc.

6380 N Eldridge Parkway Houston Texas 77041 USA
Tel: 1-888-816-4808
Email: sales@raisecominc.com

Raisecom Technology Co., Ltd.

Copyright@1999-2024
All rights reserved
Technical information is subjected to
change without notice



Characteristics >>

Intelligent virtualization

Raisecom Intelligent Stacking Framework (ISF) technology: logically virtualize multiple switches into a single switch, thus simplifying configuration and management. ISF is an efficient device/link backup solution that improves device-level reliability through redundant backup among member devices. Inter-device link aggregation improves link-level reliability and load balancing. ISF easily expands interfaces and bandwidth by adding member devices. ISF also supports smooth upgrades, so, it can achieve continuous services during the upgrade process.

Flexible Ethernet access

Various interfaces: this series feature 1000 Mbit/s or 10 Gbit/s downlink interfaces and 10GE/40GE/100GE uplink interface. The downlink not only supports 24/48 electrical interface access, but also supports 24/48 interface all-optical access. According to the rapidly increasing bandwidth demand in the market, the uplink has been upgraded to all 10 Gbit/s interfaces, which is compatible with 1000 Mbit/s and 10 Gbit/s optical modules.

Carrier-grade high reliability

Support the traditional STP/RSTP/MSTP and G.8032 ring network solutions. Support multiple networking modes, such as single ring, tangent ring, and intersection ring. The device can provide 50ms fast service switching to achieve carrier-grade reliability.

Support interface backup dual-homed protection and LACP functions, thus implementing uplink backup and greatly improving the reliability of the network side; support loop detection, which can automatically discover and eliminate loops and ensure stable operation of the client-side network.

Support comprehensive Ethernet OAM (IEEE 802.3ah/802.1ag) for rapid detection of link failures.

Support redundant backup of power supplies: high-density aggregation products can increase device reliability. Optionally support dual power supplies.

Complete security control

Customizable AAA: support domain-based management of access users and management users, and support dividing user domains and customizing authentication mechanisms for right-based and domain-based management according to the needs of different users in the enterprise. Support complete security authentication mechanisms, such as IEEE dot1x, MAC address authentication, and bypass authentication; Support the following authentication server types: RADIUS, TACACS+, and so on, which can flexibly adapt to the multiple authentication needs of campus networks and enterprises.

Support complete security authentication mechanisms, such as IEEE dot1x, MAC authentication, and bypass authentication; support the following authentication server types: RADIUS, TACACS+, and so on, which can flexibly adapt to the multiple authentication needs of campus networks and enterprises.

ARP attacks and ARP viruses are the top threats to local area network security, so the device supports rich ARP prevention functions, such as dynamic ARP inspection, which implements user legality check and ARP packet validity check, and ARP rate limiting to avoid a large number of ARP packets impacting the CPU.

By establishing and maintaining a DHCP Snooping binding table, the device directly discards illegal packets that do not meet the binding table entries. The trust interface feature of DHCP Snooping is used to ensure the legality of the DHCP server.

Support SSHv2.0 remote access, SFTP uploading and downloading, HTTPS Web management, and the use of encryption

International Headquarters

Raisecom Building, East-11, No.10 Xibeiwang East Road,
Haidian District, Beijing, P.R.China, 100193
Tel: +86 10 8288 3305
Fax: +86 10 8288 3056
www.raisecom.com

North American Headquarters, Raisecom Inc.

6380 N Eldridge Parkway Houston Texas 77041 USA
Tel: 1-888-816-4808
Email: sales@raisecominc.com

Raisecom Technology Co., Ltd.

Copyright@1999-2024
All rights reserved
Technical information is subjected to
change without notice



protocols for more secure management.

Rich QoS policies

Support filtering L2-L4 packets. Support traffic classification based on source MAC address, destination MAC address, source IP address, destination IP address, TCP/UDP port number, protocol type, and VLAN. Support flexible queue scheduling algorithms that can be configured based on both port and queue simultaneously. Support three modes: SP, WFQ, and SP+WFQ. Support CAR. Supports port mirroring in both the ingress direction and egress direction, used for monitoring packets on the specified port, copying packets from the port to the monitor port for network detection and troubleshooting. Support telemetry, which accurately monitors network traffic on 1000 Mbit/s or 10 Gbit/s high-rate networks for statistical analysis and control of network traffic.

Mature IPv6 solutions

Support IPv6 PING/telnet/SSH/FTP and IPv6 SNMP and HTTP management.

Support DHCPv6 Client/Server/Snooping/Delay/Options 18 and 37. Support IPv6 Source Guard, IPv6 prefix Snooping.

Support ND Snooping.

Support VRRPv3, IPv6 routing, and IPv6 Path MTU.

Easy OAM

Support SNMPv1/v2/v3, which can be managed through the out-of-band SNMP management interface in addition to the in-band network management so that management is not affected by service traffic. Support Web network management, which can flexibly configure and monitor single-point devices on the network. Support the Raisecom RCView network management system, which can batch configure and monitor network elements, and provide a comprehensive alarm monitoring mechanism.

Support Zero Touch Provisioning (ZTP) automatic start. After being deployed, the device can automatically obtain the IP address and configuration from the server after starting, thus implementing automatic management and configuration, needless of maintenance personnel to operate devices on site.

International Headquarters

Raisecom Building, East-11, No.10 Xibeiwang East Road,
Haidian District, Beijing, P.R.China, 100193
Tel: +86 10 8288 3305
Fax: +86 10 8288 3056
www.raisecom.com

North American Headquarters, Raisecom Inc.

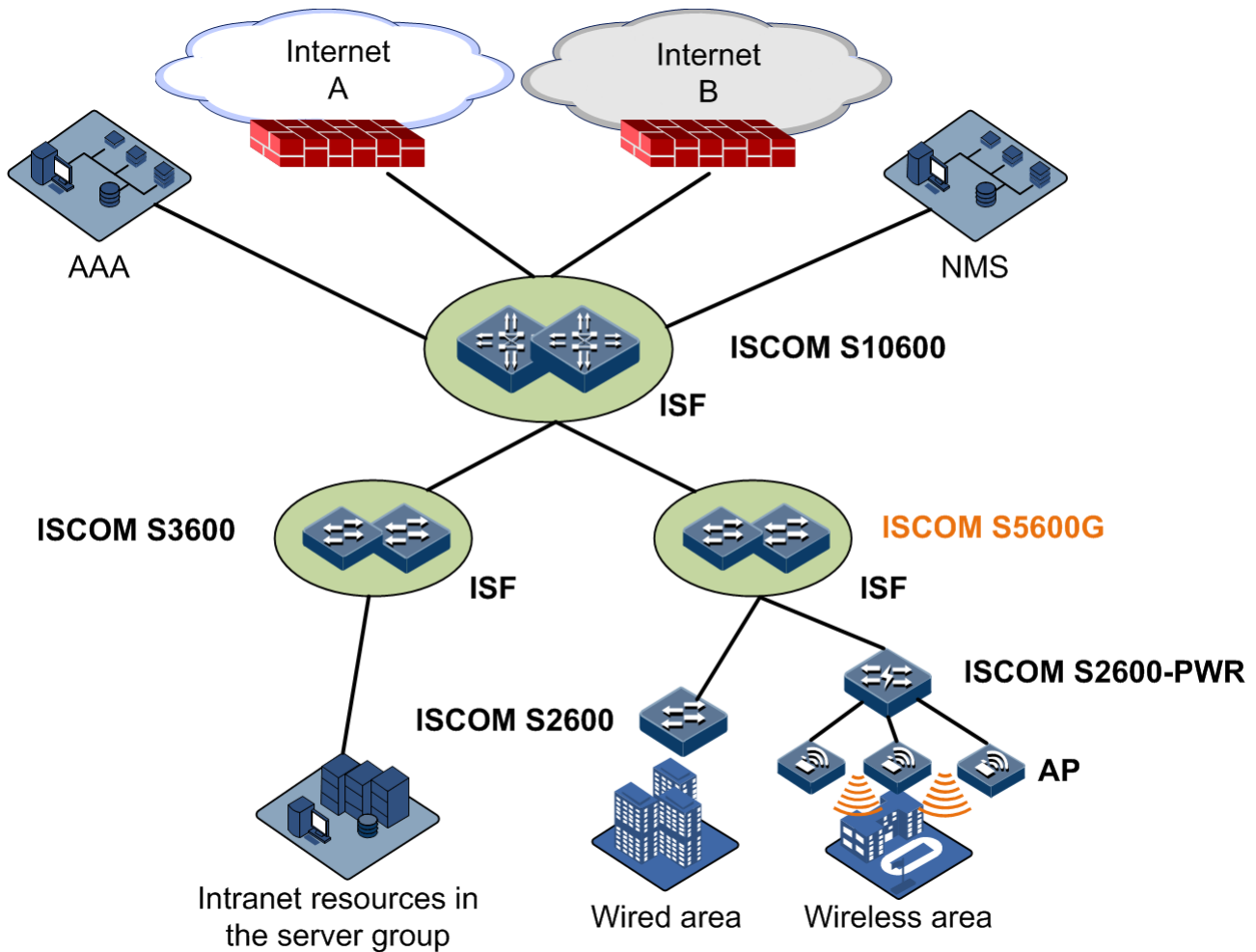
6380 N Eldridge Parkway Houston Texas 77041 USA
Tel: 1-888-816-4808
Email: sales@raisecominc.com

Raisecom Technology Co., Ltd.

Copyright@1999-2024
All rights reserved
Technical information is subjected to
change without notice

Typical applications >>

Large- and medium-sized park network aggregation



The ISCOM S2600 series, together with the ISCOM S3600, ISCOM S5600G, and ISCOM S10600, form a solution for large and medium-sized park networks. Among them, the ISCOM S3600/S2600 can serve as an access switch, providing 1000 Mbit/s access and supporting 10GE uplink interface, providing higher bandwidth for access devices. The ISCOM S5600G can serve as an aggregation switch, providing high-performance and high-capacity switching and 10GE/40GE/100GE uplink services. The ISCOM S10600 can serve as a core switch, providing high-performance and high-capacity switching and 10GE/25GE/40GE/100GE uplink services.

International Headquarters

Raisecom Building, East-11, No.10 Xibeiwang East Road,
Haidian District, Beijing, P.R.China, 100193
Tel: +86 10 8288 3305
Fax: +86 10 8288 3056
www.raisecom.com

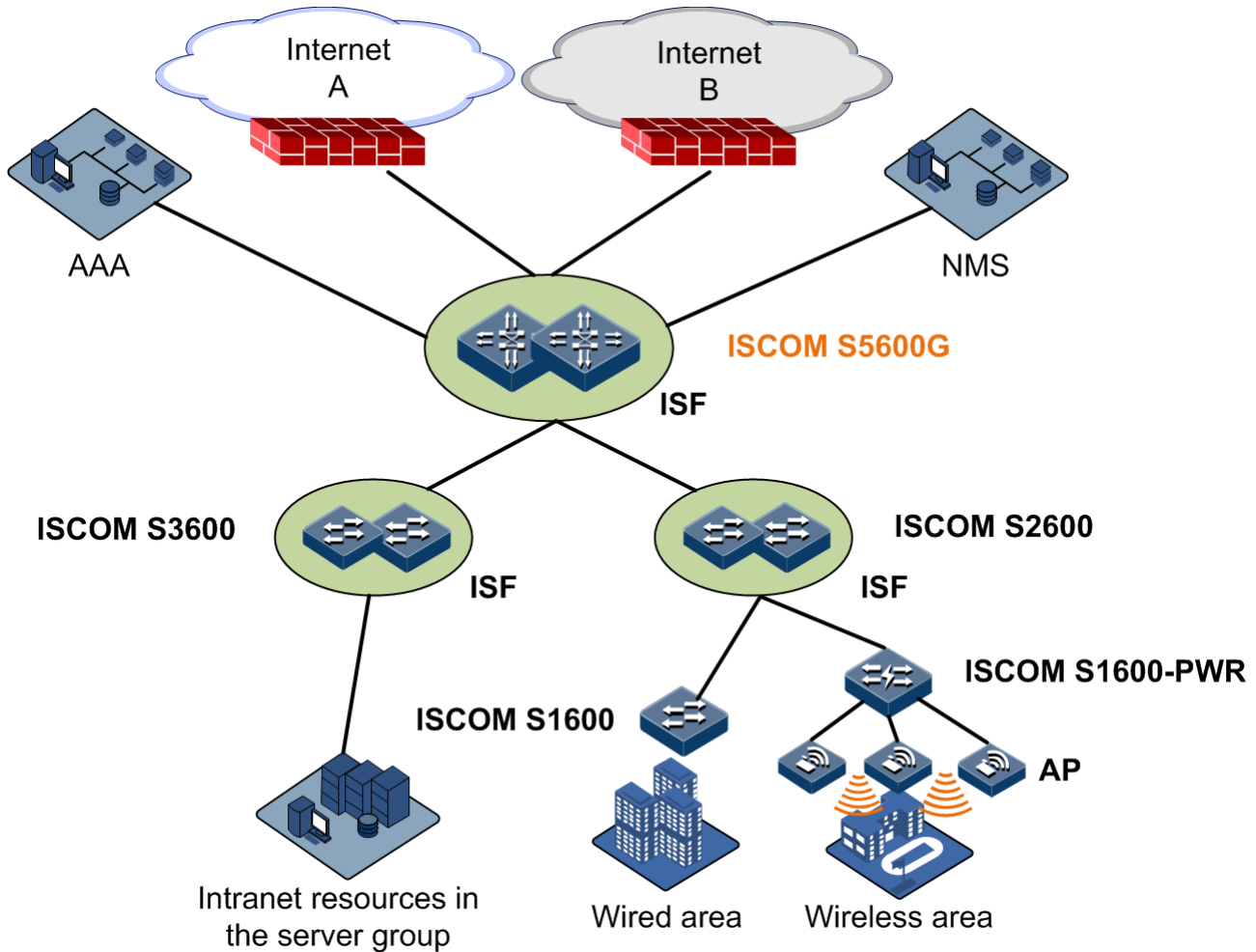
North American Headquarters, Raisecom Inc.

6380 N Eldridge Parkway Houston Texas 77041 USA
Tel: 1-888-816-4808
Email: sales@raisecominc.com

Raisecom Technology Co., Ltd.

Copyright@1999-2024
All rights reserved
Technical information is subjected to
change without notice

Small-sized park network core



The ISCOM S2600 series, together with the ISCOM S3600 and ISCOM S5600G, form a solution for small-sized park networks. Among them, the ISCOM S3600/S2600 can serve as an access switch, providing 1000 Mbit/s access and supporting 10GE uplink interface, providing higher bandwidth for access devices. The ISCOM S5600G can serve as a Layer 3 core switch, providing high-performance and high-capacity switching and 10GE/40GE/100GE uplink services, providing entire network solutions for the 10GE-backbone FE-to-desktop enterprise networks, thus meeting users' high-bandwidth and multi-service requirements.

International Headquarters

Raisecom Building, East-11, No.10 Xibeiwang East Road,
Haidian District, Beijing, P.R.China, 100193
Tel: +86 10 8288 3305
Fax: +86 10 8288 3056
www.raisecom.com

North American Headquarters, Raisecom Inc.

6380 N Eldridge Parkway Houston Texas 77041 USA
Tel: 1-888-816-4808
Email: sales@raisecominc.com

Raisecom Technology Co., Ltd.

Copyright@1999-2024
All rights reserved
Technical information is subjected to
change without notice



Hardware specifications>>

Product	ISCOM S5600G-24T4X	ISCOM S5600G-24S4X	ISCOM S5600G-48T4X	ISCOM S5600G-48S4X	ISCOM S5600G-24X2C
Interfaces	Twenty-four 10/100/1000 Mbit/s electrical interfaces Four 10 Gbit/s optical interfaces (supporting the 100/1000 Mbit/s SFP optical module and 10 Gbit/s SPF+ optical module)	Twenty-four 100/1000 Mbit/s SFP optical interfaces Four 10 Gbit/s optical interfaces (supporting the 100/1000 Mbit/s SFP optical module and 10 Gbit/s SPF+ optical module)	Forty-eight 10/100/1000 Mbit/s electrical interfaces Four 10 Gbit/s optical interfaces (supporting the 100/1000 Mbit/s SFP optical module and 10 Gbit/s SPF+ optical module)	Forty-eight 100/1000 Mbit/s SFP optical interfaces Four 10 Gbit/s optical interfaces (supporting the 100/1000 Mbit/s SFP optical module and 10 Gbit/s SPF+ optical module)	Twenty-four 10 Gbit/s optical interfaces (supporting the 100/1000 Mbit/s SFP optical module and 10 Gbit/s SPF+ optical module) Two 100GE QSFP28 optical interfaces
Switching capacity	128Gbps	128Gbps	176Gbps	176Gbps	448Gbps
Packet forwarding rate	96Mpps	96Mpps	131Mpps	131Mpps	334Mpps
Dimensions (mm) (Width × Depth × Height)	440 x 360 x 44	440 x 360 x 44	440 x 360 x 44	440 x 360 x 44	440 x 360 x 44
Power supply type	Embedded with single/dual power supplies: AC/S, DC/S, AC/D, DC/D, and AC_DC				
Input voltage	<ul style="list-style-type: none"> ● AC: 220 V; rated voltage range: 100–240 V; 50–60 Hz ● DC: -48 V; rated voltage range: -36 to -72V 				
Maximum power consumption	50w	70w	58w	93w	130w
Management interface	1 RJ45 USB interface and 1 SNMP out-of-band interface				
Environment requirements	<ul style="list-style-type: none"> ● Operating temperature: -10 to 50°C ● Relative humidity: 10%–90% (non-condensing) 				
Energy-saving and environmental protection	<ul style="list-style-type: none"> ● Support IEEE802.3az Ethernet EEE energy-saving ● Support intelligently adjusting the fan speed. 				

International Headquarters

Raisecom Building, East-11, No.10 Xibeiwang East Road,
Haidian District, Beijing, P.R.China, 100193
Tel: +86 10 8288 3305
Fax: +86 10 8288 3056
www.raisecom.com

North American Headquarters, Raisecom Inc.

6380 N Eldridge Parkway Houston Texas 77041 USA
Tel: 1-888-816-4808
Email: sales@raisecominc.com

Raisecom Technology Co., Ltd.

Copyright@1999-2024
All rights reserved
Technical information is subjected to
change without notice



Hardware specifications>>

Product	ISCOM S5600G-24T8S6X	ISCOM S5600G-48T6X
Interfaces	<ul style="list-style-type: none">● Twenty-four 10/100/1000 Mbit/s electrical interfaces● Eight 100/1000 Mbit/s SFP optical interfaces● Six 10 Gbit/s optical interfaces (supporting the 100/100 Mbit/s SFP optical module and 10 Gbit/s SPF+ optical module)● One service expansion slot	<ul style="list-style-type: none">● Forty-eight 10/100/1000 Mbit/s electrical interfaces● Six 10 Gbit/s optical interfaces (supporting the 100/100 Mbit/s SFP optical module and 10 Gbit/s SPF+ optical module)● One service expansion slot
Expansion slots	1	
Expansion cards	<ul style="list-style-type: none">● 2-interface 100GE interface card● 2-interface 40GE interface card● 8-interface 25GE interface card● 8-interface 10GE interface card	
Switching capacity	184Gbps/584Gbps	216Gbps/616Gbps
Packet forwarding rate	136.9Mpps/434.5Mpps	160.7Mpps/455.3Mpps
Dimensions (mm) (Width × Depth × Height)	440 x 360 x 44	
Power supply type	Swappable dual power supplies: AC/D, DC/D, and AC_DC	
Input voltage	<ul style="list-style-type: none">● AC: 220 V; rated voltage range: 100–240 V; 50–60 Hz● DC: -48 V; rated voltage range: -36 to -72V	
Maximum power consumption	58w	66w
Management interface	1 RJ45 USB interface, 1 SNMP out-of-band interface, and 1 USB interface	
Environment requirements	Operating temperature: -10 to 50°C Relative humidity: 10%–90% (non-condensing)	
Energy-saving and environmental protection	<ul style="list-style-type: none">● Support IEEE802.3az Ethernet EEE energy-saving● Support intelligently adjusting the fan speed.	

International Headquarters

Raisecom Building, East-11, No.10 Xibeiwang East Road,
Haidian District, Beijing, P.R.China, 100193
Tel: +86 10 8288 3305
Fax: +86 10 8288 3056
www.raisecom.com

North American Headquarters, Raisecom Inc.

6380 N Eldridge Parkway Houston Texas 77041 USA
Tel: 1-888-816-4808
Email: sales@raisecominc.com

Raisecom Technology Co., Ltd.

Copyright@1999-2024
All rights reserved
Technical information is subjected to
change without notice



Software features >>

MAC	<ul style="list-style-type: none">● Support static, dynamic, and blackhole MAC addresses.● Support MAC address flapping management.● Support port security MAC and MAC address limit.
VLAN	<ul style="list-style-type: none">● Support 4K VLANs.● Support VLAN based on MAC/protocol/IP subnet/interface.● Support basic QinQ.● Support flexible QinQ.● Support VLAN mapping (1:1/N:1).● Support GVRP.
Multicast	<ul style="list-style-type: none">● Support IGMPv1/v2/v3 Snooping and MLD Snooping v1/v2.● Support interface-based and user-based immediate leave.● Support IGMP MVR.● Support IGMP VLAN copy.● Support IGMP/MLD Filter.● Support IGMP/MLD Proxy.● Support PIM DM, PIM SM, and PIM SSM.
QoS/ACL	<ul style="list-style-type: none">● Support rate limiting based on the ingress direction and egress direction of interfaces. Support HCAR.● Each interface supports 8 queues and priority mapping.● Support traffic classification and traffic policy.● Support SP, WRR, DRR, SP+WRR, and SP+DRR queue scheduling modes.● Support congestion control WRED.● Support interface/queue shaping.
Reliability	<ul style="list-style-type: none">● Support manual aggregation and static LACP.● Support ERPS (ITU-T G.8032).● Support STP/RSTP/MSTP and spanning tree protection functions: BPDU Guard, root Guard, loop protection, TC protection/suppression.● Support Loop Detection Protection (LBD).● Support interface backup and interface isolation.
L2/L3	<ul style="list-style-type: none">● Support Ethernet OAM IEEE802.3ah.
OAM	<ul style="list-style-type: none">● Support L2CP.● Support end-to-end CFM (IEEE802.1ag)/ITU-T Y.1731.● Support interface loopback.● Support VRRPv2/VRRPv3.● Support MAD for stacking.● Support BFD/Linktrace for static route.● Support link-state tracking.
IP routing	<ul style="list-style-type: none">● IPv4 and IPv6 static route.● Support ECMP and policy routing.

International Headquarters

Raisecom Building, East-11, No.10 Xibeiwang East Road,
Haidian District, Beijing, P.R.China, 100193
Tel: +86 10 8288 3305
Fax: +86 10 8288 3056
www.raisecom.com

North American Headquarters, Raisecom Inc.

6380 N Eldridge Parkway Houston Texas 77041 USA
Tel: 1-888-816-4808
Email: sales@raisecominc.com

Raisecom Technology Co., Ltd.

Copyright@1999-2024
All rights reserved
Technical information is subjected to
change without notice



- Support IPv4 dynamic routing protocols, such as RIP, OSPF, ISIS, and BGP.
- Support IPv6 dynamic routing protocols, such as RIPng, OSPFv3, ISISv6, and BGP4+.

- VxLAN***
- Support VxLAN Layer 2 switching.
 - Support VxLAN route switching.
 - Support VxLAN gateway.
 - Support VxLAN EVPN.

- Security**
- Support AAA user domain-based management, 802.1x authentication, MAC address authentication, and bypass authentication*. Support Guest VLAN and Voice VLAN.
 - Support interface-based and VLAN-based storm control.
 - Support the whitelist, port security MAC, and MAC address limit.
 - Support IP attack prevent and ARP attack prevention: IPv4/v6 Source Guard; DAI and ND Snooping.
 - Support SSHv2.0, SFTP, and HTTPS.
 - Support CPU protection.
 - Support 802.1X.
 - Support RADIUS authentication.
 - Support DOS attack prevention.
 - Support ICMP attack prevention.

- DHCP**
- Support DHCPv4/v6 Client/Server.
 - Support DHCPv4/v6 Snooping.
 - Support DHCP v4/v6 Relay.
 - Support DHCP v4/v6 Server.
 - Support DHCPv4 option61, option82, DHCPv6 option18, and option37.

- IPv6**
- Support dual stacks.
 - Support IPv6 Ping, IPv6 Tracert, IPv6 Telnet, IPv6 SSH, IPV6 FTP/TFTP/SFTP.
 - Support IPv6 SNMP and IPv6 network management for the Raisecom RCView system.
 - Support IPV6 RADIUS, IPV6 TACACS+, IPV6 NTP, and SNTP.
 - Support ND.
 - Support DHCPv6 Client/Server/Snooping/Delay/Option18 and 37.
 - Support IPv6 Source Guard; ND Snooping.
 - Support IPv6 Path MTU.
 - Support VRRPv3.

- Management and maintenance**
- Support diversified management methods, such as CLI, SNMPv1/v2c/v3, Web network management, Telnet, and SSHv2.0.
 - Support the Raisecom RCView system.
 - Support LLDP/LLDP MED.
 - Support local and remote port mirroring. Support traffic mirroring.
 - Support system logs and hierarchical alarms. Support power Dying Gasp.
 - Support RMON.
 - Support optical module DDM.
 - Support Virtual Cable Test (VCT) and UDLD.
 - Support clock management and NTP.

International Headquarters

Raisecom Building, East-11, No.10 Xibeiwang East Road,
Haidian District, Beijing, P.R.China, 100193
Tel: +86 10 8288 3305
Fax: +86 10 8288 3056
www.raisecom.com

North American Headquarters, Raisecom Inc.

6380 N Eldridge Parkway Houston Texas 77041 USA
Tel: 1-888-816-4808
Email: sales@raisecominc.com

Raisecom Technology Co., Ltd.

Copyright@1999-2024
All rights reserved
Technical information is subjected to
change without notice



- Support IPv4/v6 ZTP, which can automatically obtain IP addresses from DHCP and optionally download configurations and upgrade software the FTP server.
- Support USB automatic deployment*.
- Support dual systems.
- Support buffer management.
- Support CPU/Memory/Flash monitoring.
- Support hardware monitoring (temperature/power/fan).

ISF

- Support ISF.

The features or products marked with * are to be released.

Ordering information about non-PoE switches >>

- | | | |
|----------------------------|---|---|
| ● ISCOM S5600G-24S4X-AC/S | A | ● Twenty-four 100/1000 Mbit/s SFP optical interfaces |
| ● ISCOM S5600G-24S4X-DC/S | | ● Four 10 Gbit/s optical interfaces (supporting the 10 Gbit/s SPF+ optical module) |
| ● ISCOM S5600G-24S4X-AC/D | | ● Console interface and SNMP interface |
| ● ISCOM S5600G-24S4X-DC/D | | ● Single/Dual power supply: single AC (AC/S); single DC (DC/S); dual AC (AC/D); dual DC (DC/D); AC + DC (AC_DC); 220 VAC power or/and -48 VDC power |
| ● ISCOM S5600G-24S4X-AC_DC | | |
| ● ISCOM S5600G-48S4X-AC/S | A | ● Forty-eight 100/1000 Mbit/s SFP optical interfaces |
| ● ISCOM S5600G-48S4X-DC/S | | ● Four 10 Gbit/s optical interfaces (supporting the 10 Gbit/s SPF+ optical module) |
| ● ISCOM S5600G-48S4X-AC/D | | ● Console interface and SNMP interface |
| ● ISCOM S5600G-48S4X-DC/D | | ● Single/Dual power supply: single AC (AC/S); single DC (DC/S); dual AC (AC/D); dual DC (DC/D); AC + DC (AC_DC); 220 VAC power or/and -48 VDC power |
| ● ISCOM S5600G-48S4X-AC_DC | | |
| ● ISCOM S5600G-24T4X-AC/S | A | ● Twenty-four 10/100/1000 Mbit/s electrical interfaces |
| ● ISCOM S5600G-24T4X-DC/S | | ● Four 10 Gbit/s optical interfaces (supporting the 10 Gbit/s SPF+ optical module) |
| ● ISCOM S5600G-24T4X-AC/D | | ● Console interface and SNMP interface |
| ● ISCOM S5600G-24T4X-DC/D | | ● Single/Dual power supply: single AC (AC/S); single DC (DC/S); dual AC (AC/D); dual DC (DC/D); AC + DC (AC_DC); 220 VAC power or/and -48 VDC power |
| ● ISCOM S5600G-24T4X-AC_DC | | |
| ● ISCOM S5600G-48T4X-AC/S | A | ● Forty-eight 10/100/1000 Mbit/s electrical interfaces |
| ● ISCOM S5600G-48T4X-DC/S | | ● Four 10 Gbit/s optical interfaces (supporting the 10 Gbit/s SPF+ optical module) |
| ● ISCOM S5600G-48T4X-AC/D | | ● Console interface and SNMP interface |
| ● ISCOM S5600G-48T4X-DC/D | | ● Single/Dual power supply: single AC (AC/S); single DC (DC/S); dual AC (AC/D); dual DC (DC/D); AC + DC (AC_DC); 220 VAC power or/and -48 VDC power |
| ● ISCOM S5600G-48T4X-AC_DC | | |
| ● ISCOM S5600G-24X2C-AC/S | A | ● Twenty-four 10 Gbit/s optical interfaces (supporting the 100/1000 Mbit/s SFP optical module and 10 Gbit/s SPF+ optical module) |
| ● ISCOM S5600G-24X2C-DC/S | | |
| ● ISCOM S5600G-24X2C-AC/D | | ● Two 100GE QSFP28 optical interfaces |

International Headquarters

Raisecom Building, East-11, No.10 Xibeiwang East Road,
Haidian District, Beijing, P.R.China, 100193
Tel: +86 10 8288 3305
Fax: +86 10 8288 3056
www.raisecom.com

North American Headquarters, Raisecom Inc.

6380 N Eldridge Parkway Houston Texas 77041 USA
Tel: 1-888-816-4808
Email: sales@raisecominc.com

Raisecom Technology Co., Ltd.

Copyright@1999-2024
All rights reserved
Technical information is subjected to
change without notice



- | | | |
|--|---|---|
| <ul style="list-style-type: none"> ● ISCOM S5600G-24X2C-DC/D ● ISCOM S5600G-24X2C-AC_DC | A | <ul style="list-style-type: none"> ● Console interface and SNMP interface ● Single/Dual power supply: single AC (AC/S); single DC (DC/S); dual AC (AC/D); dual DC (DC/D); AC + DC (AC_DC); 220 VAC power or/and -48 VDC power |
| <ul style="list-style-type: none"> ● ISCOM S5600G-24T8S6X-AC/D ● ISCOM S5600G-24T8S6X-DC/D ● ISCOM S5600G-24T8S6X-AC_DC | A | <ul style="list-style-type: none"> ● Twenty-four 10/100/1000 Mbit/s electrical interfaces ● Eight 100/1000 Mbit/s SFP optical interfaces ● Six 10 Gbit/s optical interfaces (supporting the 100/100 Mbit/s SFP optical module and 10 Gbit/s SPF+ optical module) ● Console interface, SNMP interface, and USB interface ● One service expansion slot ● Dual power supplies: dual AC (AC/D); dual DC (DC/D); AC + DC (AC_DC); 220 VAC power or/and -48 VDC power |
| <ul style="list-style-type: none"> ● ISCOM S5600G-48T6X-AC/D ● ISCOM S5600G-48T6X-DC/D ● ISCOM S5600G-48T6X-AC_DC | A | <ul style="list-style-type: none"> ● Forty-eight 10/100/1000 Mbit/s electrical interfaces ● Six 10 Gbit/s optical interfaces (supporting the 100/100 Mbit/s SFP optical module and 10 Gbit/s SPF+ optical module) ● One service expansion slot ● Console interface, SNMP interface, and USB interface ● Dual power supplies: dual AC (AC/D); dual DC (DC/D); AC + DC (AC_DC); 220 VAC power or/and -48 VDC power |

Ordering information about auxiliary parts >>

RSW-SUB-2C	A	2-interface 100GE interface card
RSW-SUB-2C	A	2-interface 40GE interface card
RSW-SUB-8K	A	8-interface 25GE interface card
RSW-SUB-8X	A	8-interface 10GE interface card

International Headquarters

Raisecom Building, East-11, No.10 Xibeiwang East Road,
Haidian District, Beijing, P.R.China, 100193
Tel: +86 10 8288 3305
Fax: +86 10 8288 3056
www.raisecom.com

North American Headquarters, Raisecom Inc.

6380 N Eldridge Parkway Houston Texas 77041 USA
Tel: 1-888-816-4808
Email: sales@raisecominc.com

Raisecom Technology Co., Ltd.

Copyright@1999-2024
All rights reserved
Technical information is subjected to
change without notice