

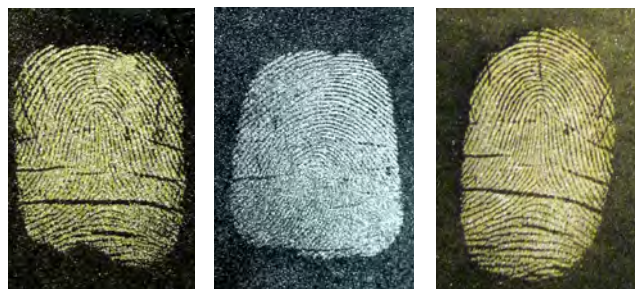
Peavey Electric Powders

Super-charge your latent fingerprints with our Electric Powders! Prints dusted with this powder appear normal on a light colored surface, but when you dust prints on a dark surface, the prints light up!



Silver/Gray Electric

Red Electric



Gold Electric

Black Electric

Copper Electric

Name	Item#	Size
Silver/Gray Electric Powder	06558	2 oz.
Silver/Gray Electric Powder	06561	8oz.
Silver/Gray Electric Powder	06562	16 oz.
Silver/Gray Electric Powder	30092	128 oz.
Red Electric Powder	06105	2 oz.
Red Electric Powder	06106	8oz.
Red Electric Powder	06107	16 oz.
Red Electric Powder	06131	128 oz.
Gold Electric Powder	06603	2 oz.
Gold Electric Powder	06604	8oz.
Gold Electric Powder	06605	16 oz.
Gold Electric Powder	06606	128 oz.
Black Electric Powder	31001	2 oz.
Black Electric Powder	31002	8oz.
Black Electric Powder	31003	16 oz.
Black Electric Powder	31004	128 oz.
Copper Electric Powder	06613	2 oz.
Copper Electric Powder	06614	8oz.
Copper Electric Powder	06615	16 oz.
Copper Electric Powder	06616	128 oz.

Whale Mouth Jars

These versatile jars can be used to hold evidence, or with our sifter screen attachment, you'll never contaminate your powder again!

Item #	Description	Quantity
05003	2 oz. Whale Mouth Jars with sifter screens	3pk.



DustBustr

Designed for use with a few teaspoons of powder, the DustBustr lid firmly snaps in place and has a hole in the top that perfectly accommodates our Fiber Duster. Simply load your brush, twirl to shake off excess, then pull it from the cup and it's ready to go with the perfect amount of powder. As an added bonus, it has a protective cap that makes it easy for transporting.

Item #	Description
13200	DustBustr w/ lid

Latent Print Powder Mister

This product has two applications: first, it will blow latent powder onto an area to develop a print and, second, it will blow off excess powder from a developed print before actually lifting the print.

When used for developing a print, simply remove the aluminum cap and pour a small amount of latent powder into the cap. After reinserting the cap into the rubber bulb, squeeze the bulb to blow the powder on the suspected area to develop the print.

Not recommended for magnetic powders.

Item #	Description
TTSPR-BULB	Latent Print Powder Mister