

Monitor CO₂

CO₂ selection guide

	P907 (TG-920P)	P903 (TG-900P)	P909 (TG-970P)	AG-400RA/K	GF-210R	GF-220R

Monitor SpO₂

BluPRO® *Reliable SpO₂ probes*
from the company that invented SpO₂

Usage

	[Weight]	Low birth weight newborn	Neonate	Infant	Child			Adult	
		1000g	3kg	10kg	20kg	30kg	40kg	50kg	
Single-patient use	TL-271T								
	TL-272T								
	TL-273T								
	TL-274T								
	TL-260T	Tape S instep	Tape L instep	Tape S finger/toe					with P256 ear clip
	TL-051S/052S								
	TL-061S/062S								
Reusable	TL-201T								
	TL-651T3								
	TL-631T3								
	TL-630T3								
	TL-220T								

Nihon Kohden recommends combination use of single-patient use and reusable probes depending on patient condition.

Monitor CO₂

CO₂ mainstream, intubated (quantitative method) - use with nebulizer/humidifier

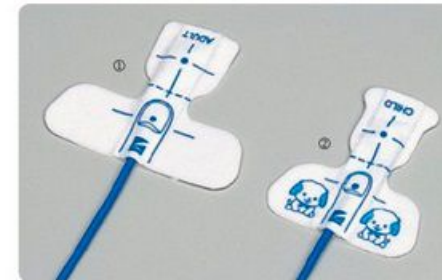
CO ₂ sensor kit	CO ₂ sensor	CO ₂ adapter

Monitor SpO₂

BluPRO® *SpO₂ probes*
from the company that invented SpO₂

Single use SpO₂ probes

Self-adhesive type



① Adult finger/toe

Code (Model)	Cord	Qty	Code (Model)	Cord	Qty
P203A (TL-271T)	0.8 m	24	P204A (TL-271T)	0.8 m	5
P203E (TL-271T3)	1.6 m	24	P204E (TL-271T3)	1.6 m	5

② Child finger/toe

Code (Model)	Cord	Qty	Code (Model)	Cord	Qty
P203B (TL-272T)	0.8 m	24	P204B (TL-272T)	0.8 m	5
P203F (TL-272T3)	1.6 m	24	P204F (TL-272T3)	1.6 m	5

③ Neonate instep

Code (Model)	Cord	Qty	Code (Model)	Cord	Qty
P203C (TL-273T)	0.8 m	24	P204C (TL-273T)	0.8 m	5
P203G (TL-273T3)	1.6 m	24	P204G (TL-273T3)	1.6 m	5

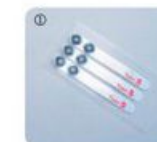
④ Infant finger/toe

Code (Model)	Cord	Qty	Code (Model)	Cord	Qty
P203D (TL-274T)	0.8 m	24	P204D (TL-274T)	0.8 m	5
P203H (TL-274T3)	1.6 m	24	P204H (TL-274T3)	1.6 m	5



Non-adhesive, for sensitive skin

Code (Model)	Attachment site	Qty
P205A (TL-260T)	Premature baby to adult	1 sensor + 4 sponge tape L/set x 5



Attachment tape for TL-260T

Code (Model)	Size	Qty
① P260A (-)	S - 1 kg or less	24

Ear clip, adult use with TL-260T

Code (Model)
P256 (-)



CO₂ selection guide

		P907 (TG-920P)	P903 (TG-900P)	P909 (TG-970P)	AG-400RA/K	GF-210R	GF-220R
Multigas		-	-	-	-	✓	✓
Flow/Paw		-	-	-	-	-	✓
Sidestream		-	-	-	✓	✓	✓
Mainstream	Semi-quantitative	✓	✓	-	-	-	-
	Quantitative	-	-	✓	-	-	-
Intubated		✓	✓	✓	✓	✓	✓
Non-intubated		✓	-	-	✓	-	-
Neonate		-	-	✓	✓	-	-

✓: Available - : Not available

CO₂ mainstream (intubated and non-intubated, semi-quantitative method)

cap-ONE Nihon Kohden's unique sensing technology
both intubated and non-intubated mainstream CO₂ measurement

CO ₂ sensor kit	CO ₂ sensor	CO ₂ adapter
Code (Model) P907* (TG-920P)	Code (Model) P923 (TG-121T)	Code (Model) K984 (JG-920P)

*TG-121T + JG-920P

Nasal adapters (non-intubated)

Code (Model)	Qty
① V922 (YG-121T)(>10 kg)	30
② V923 (YG-122T) with O ₂ supply tube adapter(>10 kg)	30

Airway adapter (intubated)

Code (Model)	Qty
R804 (YG-111T)(>7 kg)	30

CO₂ mainstream, intubated (quantitative method) - use with nebulizer/humidifier

CO ₂ sensor kit	CO ₂ sensor	CO ₂ adapter
Code (Model) P909* (TG-970P)	Code (Model) P924 (TG-221T)	Code (Model) K987 (JG-970P)

*TG-221T + JG-970P

Airway adapter

Code (Model)	Usage	Connection	Qty
R805 (YG-211T) (>7 kg)	Adult	-	30
R806 (YG-213T) (2 to 7 kg)	Infant/neonate	Connecting with flow sensor or respiration circuit without inner connector	30
R807 (YG-214T) (2.5 to 7 kg)	Infant/neonate	Connecting flow sensor with an inner connector	30

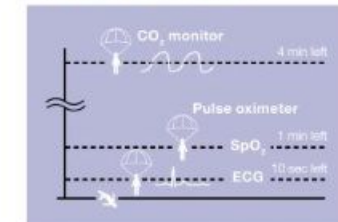
*Use with P909



Code (Model)	Usage	Qty
R802 (YG-201T) (>10 kg)	Adult	30
R803 (YG-202T) (3 to 10 kg)	Pediatric	30

*Use with P905

Comparison of response time when oxygen supply stopped



CO₂ mainstream, intubated (semi-quantitative method)

CO ₂ sensor kit	CO ₂ sensor	CO ₂ adapter	Airway adapter
Code (Model) P903* (TG-900P)	Code (Model) P922A (TG-101T)	Code (Model) K981 (JG-900P)	Code (Model) R801 (YG-101T)(>10 kg)

*TG-101T + JG-900P