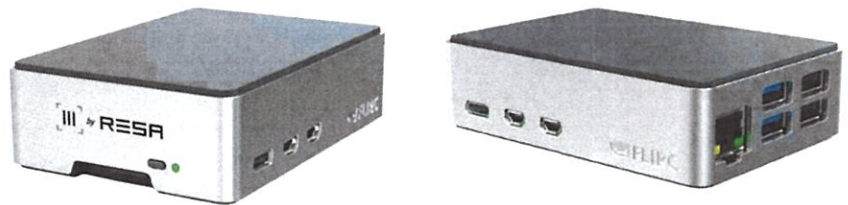




VISTA Box: Integrated solution for remote display

RESA has developed an external graphics controller for its VISTA remote display solution to ensure the system performs as expected while reducing hardware costs and eliminating the need for Windows CAL licensing.

To facilitate integration, RESA has certified and integrated a compact "VISTA Box" that natively supports a 4K/60Hz (3840x2160) resolution. Therefore, it can be connected to any display screen that supports this resolution.



The VISTA Box comes with a pre-installed RESA image that includes the operating system. RESA back-office software is also preloaded to simplify configuration. These preparations greatly facilitate implementation for clients.

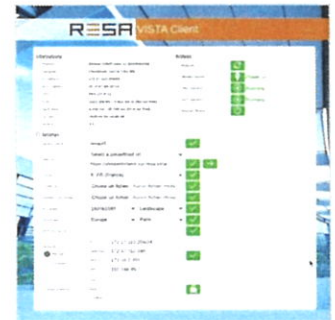
It includes various Raspberry-certified accessories (SD card, power cable and transformer, HDMI cable).

Simplified maintenance

Thanks to the back-office application that facilitates diagnosis and configuration, the VISTA Box offers quick and intuitive maintenance. This interface features:

- ≡ Easy addition of security certificates
- ≡ Adjustment of display resolution and orientation
- ≡ Configuration of the time synchronization server
- ≡ Network settings

for centralized and secure management of your solution.



Regardless of the display screens chosen by the airport, the system's behavior is guaranteed for any version upgrade.

Security and energy efficiency

This Raspberry Pi 5-based solution has the advantages of security, validation (particularly in terms of cybersecurity), and ease of installation.

The VISTA Box is based on an optimized Linux distribution, offering total system control and a high level of security thanks to OS hardening, which includes disabling unnecessary services, access partitioning, secure network configuration, monitoring and logging.

It also stands out for its very low energy consumption of 4 W (only 35 kWh per year).



- ≡ Cost reduction
- ≡ Cybersecurity compliance
- ≡ Secure exchanges
- ≡ Energy efficiency





VISTA Box: Plug & play solution



- ≡ Space saving
- ≡ Quick and easy installation
- ≡ Simplified maintenance

Technical specifications

- ≡ Based on Raspberry Pi 5 – 4 GB, 32 GB SD card
- ≡ Broadcom BCM2712 2.4GHz quad-core 64-bit Arm Cortex-A76 CPU, with Cryptographic Extension, 512KB per-core L2 caches, and a 2MB shared L3 cache
- ≡ VideoCore VII GPU, supporting OpenGL ES 3.1, Vulkan 1.2
- ≡ Dual 4Kp60 HDMI® display output with HDR support
- ≡ 4Kp60 HEVC decoder
- ≡ LPDDR4X-4267 SDRAM
- ≡ Bluetooth 5.0 / Bluetooth Low Energy (BLE)
- ≡ MicroSD card slot, with support for high-speed SDR104 mode
- ≡ 2 USB 3.0 ports, supporting simultaneous 5Gbps operation
- ≡ 2 USB 2.0 ports
- ≡ Debian 12 with cybersecurity compliance

Dimensions

- ≡ 86 mm × 56 mm × 16 mm

Weight

- ≡ 46 g

Power supply

- ≡ 5V/5A DC power via USB-C, with Power Delivery support

Cabling

- ≡ 2-meter mini-HDMI cable included

Mounting

- ≡ The VISTA Box comes with double-sided Velcro mounting strips

Please feel free to contact us for detailed documentation about VISTA.

V1.1

