

PAGINA 0

**CREATA PENTRU A
PUTEA SEMNA
ELECTRONIC
DOCUMENTUL**

[QinPot Main Body]

Product Number	Product Name	Quantity	Note
CQR10-Y-EU	QinPot Yellow	1 pc	Pipe Connector is separately sold as an option. *Pipe Connector is not included.
CQR10-P-EU	QinPot Pink	1 pc	
CQR10-G-EU	QinPot Green	1 pc	
CQR10-B-EU	QinPot Blue	1 pc	

• For different type of pipe connector, consult your COOPDECH representative.

[QinPot Liner]

Product Number	Product Name	Quantity	Note
CQD10-H-EU	QinPot Liner	50 pcs	
CQD10-G-EU	QinPot Liner Solidifying	50 pcs	

• Specification and design may be changed for improvement without prior notice.

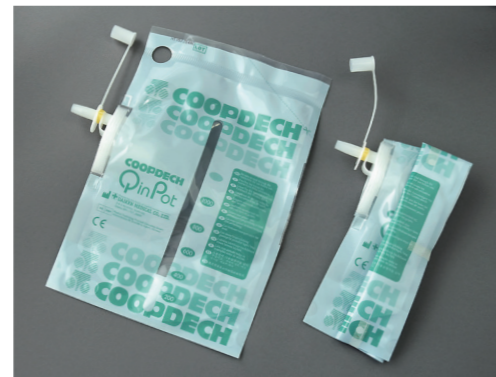
[Accessories]

Product Number	Product Name	Quantity	Note
RD822KC	Pipe Connector	1 pc	Pin type(Kawaju,Uni type)
RD822A	Pipe Connector	1 pc	Schroeder(Amco type)

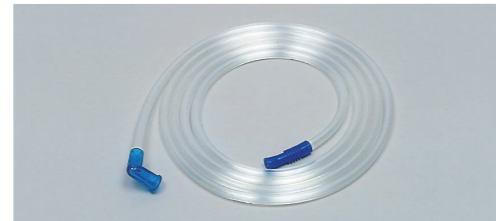
QinPot Main Body



QinPot Liner



QinPot Connecting Tube



COOPDECH **QinPot**

(The Wall-mounted Type Closed 1000mL Suction System)

Simple

It has only one connection port, it is easy to set and very unlikely to misconnect.

Safe

It is the alternative to glass jars & other disposable suction system. Solidifying substance is preinstalled inside the liner. Fluids are stored inside without the risk of direct exposure.

Compact

Thanks to its compact size, it is well suited for installations under limited space and 4 colors (Blue, Green, Pink and Yellow) are available. It is suitably designed for hospital wards and ICU.

DAIKEN MEDICAL CO., LTD.



Pioneering the future of medical society
DAIKEN MEDICAL CO., LTD.

International Department: 2-6-2, Ayumino, Izumi-city,
Osaka, 594-1157, Japan

COOPDECH's product information is available at the corporate website.
<http://www.daiken-iki.co.jp/>

[Agency]

2020.12

Contents of this catalog are as of December 2020.

Cleaner and easier to use. The optimum shape for safety and usability.



Simple Control

The cover lock, ON-OFF lever and pressure controller operating parts are simple in look and colored gray.

Hygiene

For high hygienic standard, hydrophobic filter are acting as antibacterial and over flow protection.

Dual Safety

For higher safety standard, built in hydrophobic filter is equipped as standard.



INDEPENDENT ON-OFF Lever

The ON-OFF lever is independent and convenient for frequent use.



The liner can be attached facing toward either left or right.



The liner can be removed with the suction tube.

Speedy Setting and Disposal

The liner can be ready for use in QinPot with one hand only.

Liner with Built-in Check Valve

The suction tube connection port of the liner incorporates an one-way check valve to prevent accidental overflow of drained substances. Also the cap effectively seals the contents of the liner.

Autoclavable Transparent and Rigid Canister

Highly transparent and rigid canister. The canister is made of high impact polycarbonate with high transparency. The fluid flow and general operation can be checked via the slit window of the liner.

(OPTION) Pressure Controller with Lock System

The pressure controller is positioned at the bottom of the device for better viewing and operation. Once the controller is pushed in, lock system fixes its pressure.

One connection only

QinPot Liner requires only one connection. Just connect the patient tubing and the liner is ready for use.

Compact design

QinPot is small enough to be placed at the bedside. The liner is thin and foldable, allowing compact storage from packing to disposal. (Dimensions of outer carton box of 50 pieces: 420 x 270 x 310 mm.)

Cost-effective

The liner's cost has been greatly reduced while still maintaining an extremely safe design. It remains compact even in disposal, helping to reduce costs. (15~20% less disposal cost, for more information please contact COOPDECH representatives.)

Safe

The device is a sealed unit with the liner containing a coagulant for the drained substances, so further processes are unnecessary. The coagulated material can then be incinerated or disposed safely and cleanly.

Size Comparison



QinPot Liner Bag Box (50Pcs) 1L
Size:W420mm×L310mm×H270mm
Weight:2kg

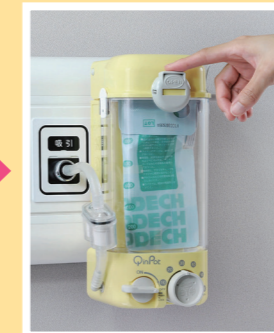
FITFIX Liner Bag Box (50Pcs) 1L
Size:W710mm×L280mm×H420mm
Weight:7.4kg

The liner can be replaced easily without removing the unit from the wall.

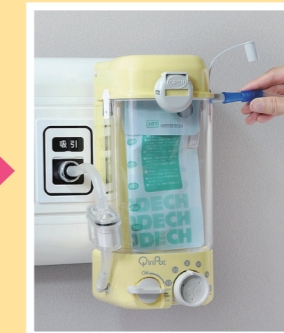
► How to setup a liner



(Set the liner in the canister.)



(Close the lid.)



(Connect the suction tube to the liner adaptor port before start suctioning.)

► Disposal



(Put the cap on the adaptor port of the liner while suctioning. (It is not necessary to stop suctioning.))



(Stop suction and opened the lid.)



(To remove the liner, put a finger through the hole at the topside of the liner and pull up.)

It's so easy!

