

## Accessories

	<div>TC100EN*</div>	<p><b>TELECAM C3</b></p> <p>Camera control unit with 2 camera inputs (X-LINE and C-LINE), for use with flexible videoendoscopes and one-chip camera heads (up to FULL HD), with digital Image Processing Module and USB storage option, power supply 100-120 VAC/200-240 VAC, 50/60 Hz including:</p> <p><b>Mains Cord</b>, length 300 cm  <b>DVI-D Connecting Cable</b>, length 300 cm  <b>USB Flash Drive</b>, 32 GB  <b>USB Silicone Keyboard</b>, with touchpad, US</p>
	<div>TH110</div>	<p><b>IMAGE1 S™ HX</b></p> <p>One-chip FULL HD camera head, 50/60 Hz, fixed focus, progressive scan, soakable, gas- and plasma-sterilizable, focal length <math>f = 16</math> mm, 2 freely programmable camera head buttons, for use with IMAGE1 S™ X-LINK TC301, TELE PACK+ TP101 and TELECAM C3 TC100</p>
	<div>TH111</div>	<p><b>IMAGE1 S™ HX-P</b></p> <p>One-chip FULL HD pendulum camera head, 50/60 Hz, with pendulum system and fixed focus, progressive scan, soakable, gas- and plasma-sterilizable, focal length <math>f = 16</math> mm, 2 freely programmable camera head buttons, for use with IMAGE1 S™ X-LINK TC301, TELE PACK+ TP101 and TELECAM C3 TC100</p>

\* Also available in the following languages: DE, ES, FR, IT, PT, RU, SE



UG 230

**Equipment Cart LC**, rides on 4 antistatic dual wheels equipped with locking brakes, energy beam with integrated electrical subdistributors with 6 sockets, grounding plugs,

Dimensions:

Equipment cart: 830 x 1474 x 730 mm

(w x h x d),

Shelf: 630 x 25 x 510 mm (w x h x d),

Caster diameter: 125 mm

including:

**Base Module**, equipment cart LC

**Cover**, equipment cart LC

**Beam Package**, equipment cart LC

**Shelf**, wide

**Drawer Unit with Lock**, wide

**Camera Holder**

2x **Mains Cord**, length 100 cm

# LED Cold Light Fountains

POWER LED 175 SCB, LED NOVA 150



	<b>20 1614 01-1</b> <b>Cold Light Fountain POWER LED 175 SCB</b>	<b>20 1612 01</b> <b>Cold Light Fountain LED NOVA 150</b>
	with integrated KARL STORZ-SCB, high-performance LED module and one KARL STORZ light outlet	high-performance LED module, with one KARL STORZ light outlet
<b>including:</b>	<b>Mains Cord</b> <b>SCB Connecting Cable</b>	<b>Mains Cord</b>

## Specifications:

Illumination technology	LED	
Color temperature	approx. 6400 K	
Average lamp service life	30,000 h	
Light intensity adjustment	automatic via SCB manual via SCB manual via membrane keyboard	manual
Unit communication	KARL STORZ Communication Bus (2x SCB)	—
Power consumption	110 VA	60 VA
Power supply	110 – 240 VAC	100 – 240 VAC
Power frequency	50/60 Hz	
Dimensions w x h x d	305 x 110 x 233 mm	305 x 84 x 238 mm
Weight	4 kg	2.3 kg
Cleaning	wipe disinfection	
Protection class	1	
Degree of safety	CF	

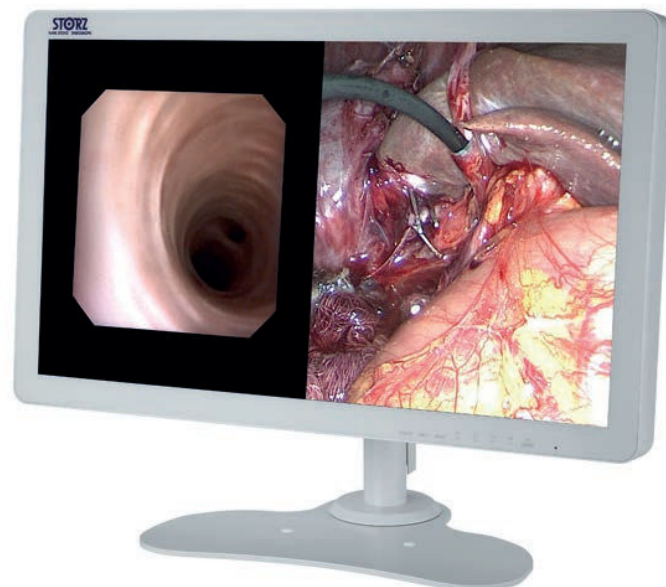
# 27-INCH FULL HD WIDESCREEN SURGICAL MONITOR

## SPECIFICATIONS SHEET

### HIGHLIGHTS

The TM220 surgical monitor is the ideal high-definition surgical display solution for your video needs. This monitor not only offers a sleek, bright image, it also provides versatility in viewing options.

- Fully flat design for safety and hygiene protects against splashes
- High brightness with an energy-efficient LED backlight
- View multiple signals on one screen with PoP (Picture-out-Picture) and PiP (Picture-in-Picture) functionality
- Adjust screens individually when displaying two signal sources side by side on the same screen



### HARDWARE

FEATURE	DETAIL	ADDITIONAL NOTES
Panel	Type	Color (IPS)
	Backlight	LED
	Size	68.6 cm / 27.0"
	Native Resolution	1920 x 1080 (16:9 aspect ratio)
	Viewable Image Size (H x V)	598 x 336 mm
	Pixel Pitch	0.311 x 0.311 mm
	Display Colors	10-bit colors (SDI) : 1.07 billion (maximum) colors 8-bit colors: 16.77 million colors
	Viewing Angles (H / V, typical)	178° / 178°
	Brightness (typical)	900 cd/m <sup>2</sup>
	Contrast Ratio (typical)	1000
	Response Time (typical)	14 ms (on / off)
Video Signals	Input Terminals	BNC (3G-SDI), DVI-D x 2 (HDCP 1.4), D-Sub 15 pin (mini), S-Video, BNC (Composite)
	Output Terminals	BNC (3G-SDI), DVI-D, S-Video, BNC (Composite)
	Digital Scanning Frequency (H / V)	15 - 75 kHz / 24 - 60 Hz
	Analog Scanning Frequency (H / V)	15 - 80 kHz / 24 - 85 Hz
	Sync Formats	Separate, Composite, Sync on green

Please note that product details are subject to change without prior notice.  
For the most up-to-date product information, refer to the KARL STORZ website ([www.karlstorz.com](http://www.karlstorz.com)).

# 27-INCH FULL HD WIDESCREEN SURGICAL MONITOR

## SPECIFICATIONS SHEET

### HARDWARE

FEATURE	DETAIL	ADDITIONAL NOTES
Power	Power Requirements	AC 100 - 240 V: 50 / 60 Hz
	Maximum Power Consumption	79 W
Physical Specifications	Net Weight (Without Stand)	8.5 kg
	Hole Spacing (VESA Standard)	100 x 100 mm, M4, depth 5 - 9 mm
	Dimensions (net)	660 mm (W) x 400 mm (H) x 87 mm (D)
Environmental Requirements	Degree of Protection	IP45 (Front), IP32 (Rear)
Certifications & Standards	CE (Medical Device Directive), EN60601-1, ANSI/AAMI ES60601-1, CSA C22.2 No. 601-1, IEC60601-1, VCCI-A, FCC-A, CAN ICES-3(A), RCM, RoHS, China RoHS, WEEE, CCC, EAC, BIS	
FDA	Class I	

It is recommended to check the suitability of the product for the intended procedure prior to use.  
Please note that the described products in this medium may not be available yet in all countries due to different regulatory requirements.



KARL STORZ SE & Co. KG  
Dr.-Karl-Storz-Straße 34, 78532 Tuttlingen/Germany  
Postbox 230, 78503 Tuttlingen/Germany  
Phone: +49 (0)7461 708-0  
Fax: +49 (0)7461 708-105  
E-Mail: [info@karlstorz.com](mailto:info@karlstorz.com)  
[www.karlstorz.com](http://www.karlstorz.com)

Caution: Federal (USA) law restricts this device to sale by or on the order of physician.

KARL STORZ Endoscopy-America, Inc.  
2151 East Grand Avenue  
El Segundo, CA 90245-5017, USA  
Phone: +1 424 218-8100  
Phone toll free: 800 421-0837 (US only)  
Fax: +1 424 218-8525  
Fax toll free: 800 321-1304 (US only)  
E-Mail: [communications@karlstorz.com](mailto:communications@karlstorz.com)

© 2021 KARL STORZ Endoscopy-America, Inc.

# Fiber Optic Light Cables

for Cold Light Fountains



## Fiber Optic Light Cable with Straight Connector

495 NE	<b>Fiber Optic Light Cable</b> , diameter 4.8 mm, length 300 cm
495 NCS	<b>Fiber Optic Light Cable</b> , extremely heat-resistant, diameter 4.8 mm, length 250 cm
<b>NEW</b> 495 NCSC	<b>Fiber Optic Light Cable</b> , extremely heat-resistant, with safety locking device, diameter 4.8 mm, length 250 cm
495 NB	<b>Fiber Optic Light Cable</b> , diameter 4.8 mm, length 180 cm
495 ND	<b>Fiber Optic Light Cable</b> , diameter 3.5 mm, length 300 cm
495 NA	<b>Fiber Optic Light Cable</b> , diameter 3.5 mm, length 230 cm
<b>NEW</b> 495 NAC	<b>Fiber Optic Light Cable</b> , with safety locking device, diameter 3.5 mm, length 230 cm
495 NL	<b>Fiber Optic Light Cable</b> , diameter 3.5 mm, length 180 cm
495 NTA	<b>Fiber Optic Light Cable</b> , diameter 2.5 mm, length 230 cm
495 NT	<b>Fiber Optic Light Cable</b> , diameter 2.5 mm, length 180 cm
<b>NEW</b> 495 TIP	<b>Fiber Optic Light Cable</b> , highly heat resistant, diameter 4.8 mm, length 300 cm, optimized for 3D TIPCAM®1 and TIPCAM®



## Fiber Optic Light Cable with 90° Deflection to the Light Source

495 NWL	<b>Fiber Optic Light Cable</b> , with 90° deflection to the cold light fountain on the fountain side, diameter 3.5 mm, length 300 cm
495 NWM	<b>Fiber Optic Light Cable</b> , with 90° deflection to the cold light fountain on the fountain side, diameter 3.5 mm, length 230 cm
495 NW	<b>Fiber Optic Light Cable</b> , with 90° deflection to the cold light fountain on the fountain side, diameter 3.5 mm, length 180 cm
495 NTX	<b>Fiber Optic Light Cable</b> , with 90° deflection to the cold light fountain on the fountain side, diameter 2.5 mm, length 230 cm
495 NTW	<b>Fiber Optic Light Cable</b> , with 90° deflection to the cold light fountain on the fountain side, diameter 2.5 mm, length 180 cm



495 NVC



495 NV/NVL/NVB

## Fiber Optic Light Cable with 90° Deflection to the Instrument

<b>NEW</b> 495 NVC	<b>Fiber Optic Light Cable</b> , with 90° deflection to the instrument, very narrow radius of curvature, diameter 4.8 mm, length 300 cm
495 NVB	<b>Fiber Optic Light Cable</b> , with 90° deflection to the instrument, diameter 4.8 mm, length 300 cm
495 NVL	<b>Fiber Optic Light Cable</b> , with 90° deflection to the instrument, diameter 3.5 mm, length 300 cm
495 NV	<b>Fiber Optic Light Cable</b> , with 90° deflection to the instrument, diameter 3.5 mm, length 230 cm



## Light Adaptor, angled 90°

495 EW	<b>Light Adaptor</b> , angled 90°, diameter 4.8 mm, free rotatable, to connect with standard telescopes
--------	---

Adaptor for connecting KARL STORZ fiber optic light cables with endoscopes and light sources from other manufacturers, see page TP 132

## Recommended Accessories for Equipment Cart



UG310

UG310

### **Isolation Transformer,**

200 V–240 V; 2000 VA with 3 special mains socket, expulsion fuses, 3 grounding plugs, dimensions: 330 x 90 x 495 mm (w x h x d), for usage with equipment carts UGxxx



UG410

UG410

### **Earth Leakage Monitor,**

200 V–240 V, for mounting at equipment cart, control panel dimensions: 44 x 80 x 29 mm (w x h x d), for usage with isolation transformer UG310



UG510

UG510

### **Monitor Holding Arm,**

height adjustable, inclinable, mountable on left or right, turning radius approx. 320°, overhang 530 mm, load capacity max. 15 kg, monitor fixation VESA 75/100, for usage with equipment carts UGxxx



UG 603

**Shelf, narrow**, load capacity max. 60 kg, dimensions: 450 x 25 x 510 mm (w x h x d), for use with Equipment Carts UG xxx

UG 604

**Shelf, wide**, load capacity max. 60 kg, dimensions: 630 x 25 x 510 mm (w x h x d), for use with Equipment Carts UGxxx

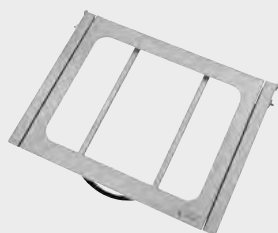


UG 601

**Drawer Unit with Lock**, small, max. shelf load 60 kg, max. drawer load 5 kg, with cable slot, dimensions: 450 x 126 x 510 mm (w x h x d), for use with Equipment Carts UG xxx

UG 602

**Drawer Unit with Lock**, wide, max. shelf load 60 kg, max. drawer load 5 kg, with cable slot, dimensions: 630 x 126 x 510 mm (w x h x d), for use with Equipment Carts UG xxx



UG 610

**Sliding Tray Holder**, narrow, load capacity max. 10 kg, dimensions: 450 x 510 mm (w x d), for use with Equipment Carts UG xxx

UG 611

**Sliding Tray Holder**, wide, load capacity max. 10 kg, dimensions: 630 x 510 mm (w x d), for use with Equipment Carts UG xxx



UG 608

**Equipment Rail**, long, for mounting to side of equipment cart, dimensions: 300 x 25 x 10 mm (w x h x d), for Equipment Carts UG xxx

UG 607

**Equipment Rail**, short, for mounting to side of equipment cart, dimensions: 170 x 25 x 10 mm (w x h x d), for Equipment Carts UG xxx



UG 619

**Cable Manager**, 2-piece, for mounting to vertical beam, package of 2, for use with Equipment Carts UG xxx



## Optional Accessories:



11301CE1 **Suction Valve**, for single use,  
package of 20



11301CB1 **Suction Valve**, reusable



11301P **Seal for Suction Valve Port**, to seal the suction channel,  
for use with flexible Video Cystoscopes HD-VIEW  
11272VHK/11272VHUK



11014L **LUER Port with Stopcocks**, attachment to working  
channel, for the connection of irrigation tubing and the  
insertion of instruments



11014LU **Double LUER Port**, attachment to working channel, for  
the connection of irrigation tubing and the insertion of  
instruments



11014DS **Seal Working Channel Connector**, seal with hole,  
package of 10, for use with LUER Ports 11014L/11014LU  
and Cleaning Adaptor 11014RA



27023FE **Grasping Forceps for Small Fragments**, 5 Fr.,  
single action jaws, flexible, length 73 cm

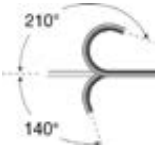


27023ZE **Biopsy Forceps**, 5 Fr.,  
single action jaws, flexible, length 73 cm

Flexible Video Cysto-Urethroscope

High Performance by Definition



Item no.	Deflection of distal tip	Direction of view	Working length	Working channel	Sheath size	Distal tip outer circumference	Position of working channel	Working channel port	Suction valve port
11272VHK with positive deflection mechanism		0°	37 cm	7 Fr.	16 Fr.	10.9 Fr.	6 o'clock	detachable	yes
11272VSUK with contrapositive deflection mechanism		0°	37 cm	7 Fr.	16 Fr.	10.9 Fr.	6 o'clock	detachable	yes

## Flexible Video Cysto-Urethroscope

High Performance by Definition

**HD-VIEW**



**The HD-VIEW cystoscope is available as 2 different sets:**

**11272VHK Flexible Video Cystoscope HD-VIEW, Set**, with positive deflection mechanism, with suction channel and integrated light source, deflection of distal tip 210°/140°, direction of view 0°, angle of view 100°, working channel inner diameter 7 Fr., sheath size 16 Fr., working length 37 cm, for use with IMAGE1 S™ (TC200), TELE PACK+ (TP101), TELECAM C3 (TC100)

consisting of:

11272VH	<b>Flexible Video Cystoscope HD-VIEW</b>
11014L	<b>LUER-Port with Stopcocks</b>
11014RA	<b>Cleaning Adaptor</b> , for working channel
11014DS	<b>Seal Working Channel Connector</b>
11301CD1	<b>Irrigation Adaptor</b>
27677SX	<b>Case</b>
13242XL	<b>Leakage Tester</b>
11025E	<b>Pressure Compensation Cap</b>

**11272VHUK Same**, with contrapositive deflection mechanism, with Double LUER Port 11014LU