

COMEN



Bilanx AX-500

The unique design and the whole shape, although some configurations lacked, but its function is still so powerful, the performance is still stable, reliable. We have always been committed to providing customers with cost-effective anesthesia machine.



M200 Infusion Workstation

We not only fully meet the requirement of product features for doctors, but also concern about patients. In order to design brand-new M200 infusion workstation, designers from COMEN insist on user-oriented concept with their unremitting efforts. It saves time and improves work efficiency and safety, even greatly reduces doctors' workload.

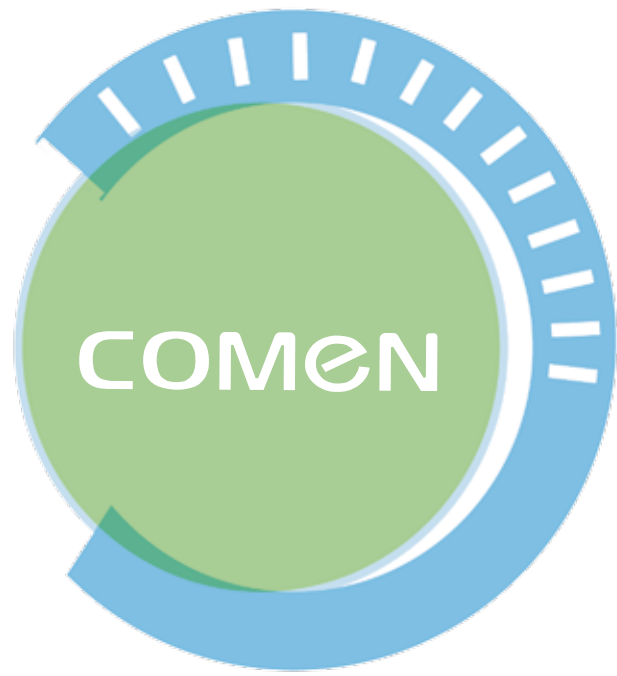


bilanx AX-900 Anesthesia Machine

Shenzhen Comen Medical Instruments Co., Ltd.



Add: Floor 7, Block 5, 4th Industrial Park of Nanyou, Nanshan District, Shenzhen City 518052, China
Tel: +86-755-2640 8879 2641 9446 Fax: +86-755-2643 1232 Website: www.szcomen.com E-mail: info@szcomen.com



Care

- Care for Patient • anaesthetist • hospital: 15" & 8" touch screen, workbench illumination, flowmeter backlight, precise anesthesia ventilator, advanced ventilation modes, suitable for surgery from low to high risk, simple to complex, pediatric to obese patient; Nowadays improving the efficiency of healthcare workers is especially important along with the rise of patients ; Bilanx is your better choice in anesthesia field.

- Rival the ICU ventilators in quality, full range of ventilation modes to meet requirements for different high-risk surgeries;
- PSV and SIMV provide perfect weaning solution, reduce ventilator fighting and the need for sedation or narcosis.
- PEEP can be maintained regardless of the ventilation mode and supports real-time visual display.
-

Outstanding

Modern

- From appearance design, operation system to AGSS, ACGO, high temperature sterilization, anesthesia Information System, The Bilanx not only provides state-of-the-art therapy solution, but also Optimize the workflow base on user's requirement; Equipped with our C90 modular monitor to achieve seamless connection of patient's monitoring information.

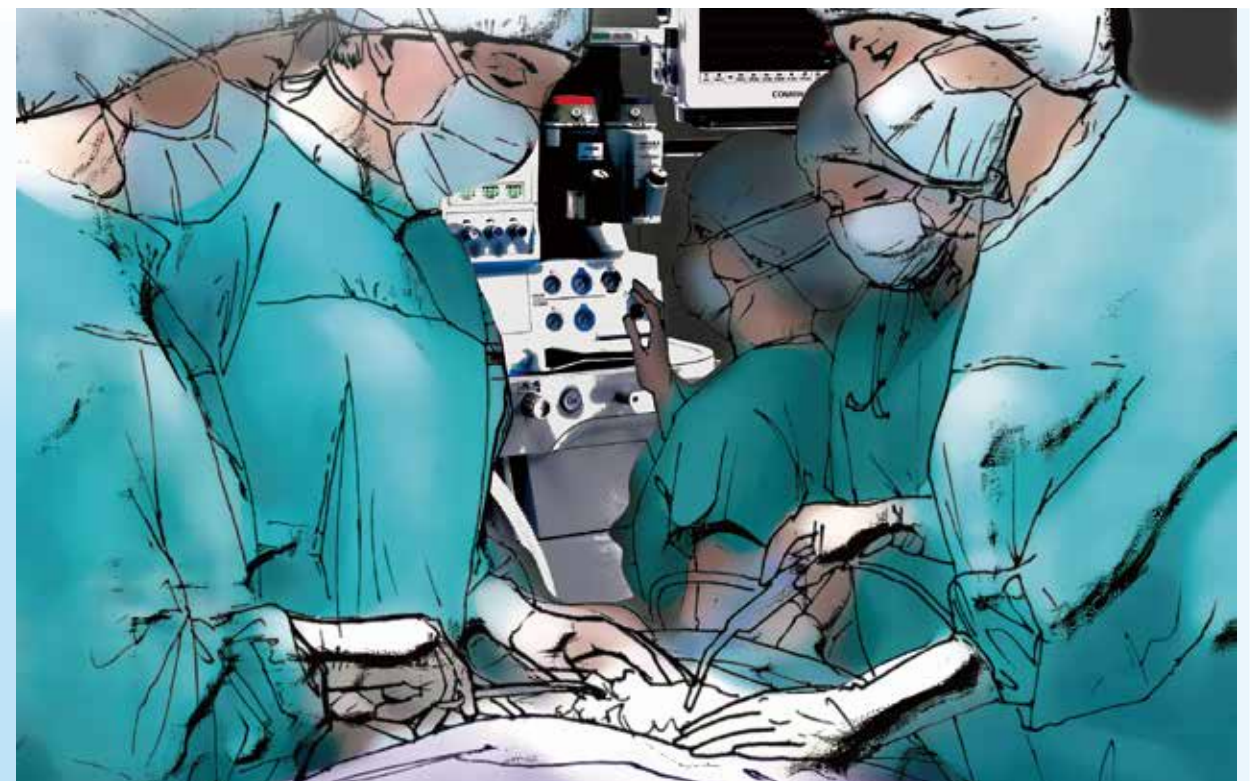
Efficiency

- 15 inch touch screen, simply user interface for fast operating control.
- Speed startup, self check, automatic leakage test, central brake system, CO₂ by-pass, innovative Auxiliary Common Gas Outlet (ACGO) provide you more perfect workflow and distinctive clinical operation experience.

Nice

- Compactable, Neat and elegant.
- Rotatable drawer with larger capacity, Larger table.
- Integrated parameter and cable management.
- Integrated breathing circuit system, built-in flow sensors.
- Suitable for major, medium and minor operation.

That is why we are distinctive! Because, we often ask ourselves how we can make better for patient, we listen to medical professors around the world, we cooperate with world-class enterprises, and we focus on finding out problems in clinical and offering effective solution.





AX-900

- Electronically controlled, bellows driven ventilator
- Volume Control Ventilation (VCV) and Pressure Control Ventilation (PCV)
- Synchronized Intermittent Mandatory Ventilation in volume or pressure modes (SIMV-VC and SIMV-PC)
- Continuous Positive Airway Pressure/Pressure Support ventilation (CPAP-PSV)
- Pressure Support ventilation Protection (PSVPro)
- Pressure Regulate Volume Control (PRVC)
- Synchronized Intermittent Mandatory Ventilation - Pressure Regulate Volume Control (SIMV-PRVC)
- Manual/spontaneous breathing mode with respiratory monitoring capability
- O₂, N₂O, Air gas supply, backup cylinder yoke optional
- Anesthetic gas, CO₂ and BIS measurement optional
- GCX rail at each side and the top shelf feature Bilanx good Patient monitoring provisions Available with optional patient monitor
- High or low flow, Closed or semi-closed system, Bilanx adapts



Outstanding ventilator

- Minimum tidal volume down to 15ml in VCV mode, in PCV mode down to 5ml.
- Electronic flow control system support putting oxygen concentration ratio on the screen to mix gas automatically, more precision and safety.
- The best flow indicator is provided to display the cumulative amount and spillover in real time to realize low flow anaesthesia.
- The most advanced ventilator with 9 ventilation modes.
- Automatic compensate for compliance, fresh gas and leakage, maintain accurate tidal volumes, and ensure what you set is what you get.
- Comprehensive respiratory mechanic parameters monitor, real-time waveforms and P-V, F-V and P-F spirometry loops display.
- Intelligent alarm management, e.g.: Cardiopulmonary Bypass (CPB) mode.



Excellent breathing system

- Compact and integrated design; Closed and semi-closed system.
- PPSU plastic circuit, corrosion resistance, long service life and fully autoclavable at 134°C.
- Easy to disassemble and convenient to clean, save more maintenance time.
- Built-in heater and the medium copper plate eliminate the condensation of the internal water vapor effectively.
- Simple and rapid CO₂ absorber canister installation.
- CO₂ bypass facilitates soda lime exchange during operation without any care about leakage.

Dräger Vaporizer versatility, low lifecycle cost and proven reliability



- Exemplary handling qualities in operation or transport.
- Large Capacity 300 mL, leaving no waste and thereby saving you cost.
- No manufacturer overhaul, no recalibration in its lifetime.
- The cap of the control dial is shaded with the agent's standard color an eye-catching feature that reduces the risk of mix-ups.
- Selectatec®* compatible plug-in system are available with there respective interlock systems for multi vaporizer operations.
- Incomparable flow and concentration range, means Vapor 2000 can completely meet the requirements of micro-flow.
- Wide temperature adaptation range from 10°C to 40°C, which ensures the vapourizer get accurate concentration even in limited conditions.
- Available for Halothane, Enflurane, Isoflurane, Sevoflurane, Desflurane.



Masimo CO₂ & AG module

- Automatically identify CO₂, N₂O and 5 anesthetic gases, it can also provide CO₂ waveform, AG concentration and minimal alveolar concentration(MAC).
- Can be used both in AX-900 and C90 module monitor.



Electronic Flow Meter

- Instantly know the fresh gas flow to your patient.
- Identifying key information quickly and easily is critical to your practice.

Flow meter back light

- Providing a quick reference even in a darkened environment.



Central brake system

- Time-saving, convenient and easy to use.



Electrical central controlled braking caster

- Electrically conductive, Quiet, smooth and positive brake performance, high quality from the STEINCO group.
- It is capable to prevent wires from pressing by the caster





Anaesthetic Gas Scavenging System (AGSS)

- Effective removal of anesthesia gases from the working area.



Rotatable and lockable roomy drawer



Brightness adjustable deck light

- Provides work area illumination.



One-hand CO₂ absorber canister installation



Auxiliary Oxygen supply

- Provide preferred clinical practice.

Highly visible ACGO

- For connection of semi-open breathing systems, e.g.: Bain circuit.

Ample Workbench

- Enough space to meet your needs.
- Stainless steel workbench prevent from corrosion and easy to clean.

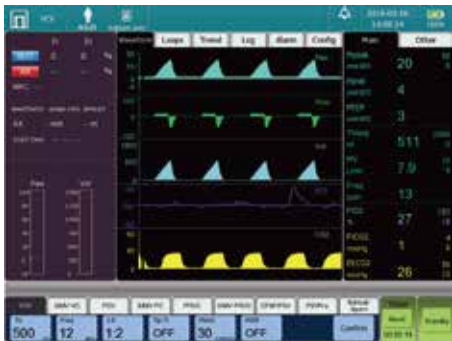
Module slot optional

- AG, CO₂, BIS monitoring module optional

Clear, Intuitive User Interface

Easy Operation is the most important experience which the central station we provide for your work.

The set and measured value of inspiration and expiration displayed on the same screen help to make the management of gas delivery, also the logical control.



Comprehensive loop and waveform display. Anesthesia Gas Monitoring, auto gas identification and Mac calculation



2000 event records of settings, technical and physiologic alarm



Alarm setting interface



60 Hours trends review



Real time measuring for airway pressures, flow, volumes, compliance and resistance of breath offer a intuitive tool to detect leaking, airway obstruction and optimal ventilated parameters adjustment



Easy to observation by Big Font Display



bilonx AX-600