



Notified body N° 0075

EC-TYPE EXAMINATION CERTIFICATE

The following model of Personal Protective Equipment has been subjected to an EC-type examination in accordance with the article 10 of the PPE Directive (89/686/EEC) and has been shown to satisfy the relevant provisions of the Directive.

Certificate N°

0075/1562/161/05/16/0441

Is given to the following model of personal protective equipment :

Issued to :

CORTINA N.V.

MEERSBLOEM-MELDEN 42, 9700 OUDENAARDE, BELGIUM

BELGIUM

Distributor :

/

Product reference :

**Reference: OXYCLOG Article Code: OXYCLOG(BLUE),
OXYCLOG(E.BLUE), OXYCLOG(E.GREEN), OXYCLOG(FUXIA),
OXYCLOG(L.BLUE), OXYCLOG(L.GREEN), OXYCLOG(LILAC),
OXYCLOG(RED), OXYCLOG(WHITE)**

Description :

PPE Type :	<i>an occupationnal footwear</i>		
Reference standard :	<i>EN ISO 20347 : 2012</i>		
Classification :	<i>II</i>	Category :	<i>OB A E</i>
Size range :	<i>35/36-45/46</i>	Slip resistance :	<i>SRA</i>

Full description of the PPE, reference rules verified in the context of the EC-type examination and information given on the product are detailed in the complete certificate N° 0075/1562/161/05/16/0441.

Issued in Lyon by Lionel Gaudillere
Head of CE marking

Date of issue : May 02nd, 2016



In application of the Directive ref 89/686/EEC of the 21th December 1989, concerning the alignment of member state legislation relating to personal protective equipment and the decree N°92-765, 766 and 768 of the 29th July 1992 concerning the transposition of this Directive into French law. CTC is notified by decree of the Ministry of work of the 20th December 2010 and is registered under the number 0075 in OJEU.



4 rue Hermann Frenkel 69367 Lyon cedex 07 FRANCE
Tel : 33.472.761.010 - Fax : 33.472.761.000 - email : ctclyon@ctcgrupe.com - www.ctc.fr
Comité professionnel de développement économique cuir chaussure maroquinerie
Siret 77564972600160 - code NAF 9412Z - TVA FR 88775649726

EU Declaration of Conformity

PRODUCT TYPE: Occupation Shoes

MANUFACTURER: CORTINA NV
Meersbloem-Melden 42, 9700 Oudenaarde, Belgium

This declaration of conformity is issued under the sole responsibility of the Manufacturer

PRODUCT ID: OXYCLOG

The above product is in conformity with the regulation (EU) 2016/425 and is identical to the PPE which is subject of EU certificate **0075/1562/161/11/18/2560** issued by:

C.T.C (0075)
4, rue Hermann Frenkel
69367 LYON Cedex 07
FRANCE

Relevant Harmonized Standards / Technical Specifications used to which conformity is declared:
EN ISO 20347: 2012

Signed for on behalf of

Date: 26/12/2018

Name: Peter De Mezure

Position: QA Manager

Signature: **CORTINA nv**
Meersbloem - Melden 42
9700 OUDENAARDE (Belgium)
Tel: 055 33 56 56
Fax: 055 33 56 57





Oxyclog



OXYCLOG-EBL



OXYCLOG-BLU



OXYCLOG-EGN



OXYCLOG-FUX



OXYCLOG-LBL



OXYCLOG-LGN



OXYCLOG-LIC



OXYCLOG-RED



OXYCLOG-WHT

The model OXYCLOG is a clog for the operation room with an adjustable strap to guarantee a perfect fit. The anatomic shaped foot bed gives optimal support.

This shoe easily meets every requirement of the OR. This clog can be chemically or UV sterilized and is autoclavable. The shoe is also machine washable at 90°C or 194°F.

The slip resistant outsole provides a good grip both on wet and dry surfaces. The closed top is to protect the foot, but lateral vents take care of the needed ventilation.



Oxypas is part of the Cortina Group
Cortina NV - Meersbloem Melden 42 - 9700 Oudenaarde, Belgium
E-mail: contact@oxypas.com
Phone: (32) 55 33 44 44 - Fax: (32) 55 33 56 46
Website: www.oxypas.com



Oxyclog

CE standard
CE EN 20347 certified.



Autoclavable
Till 135° C or 275°F.



Washable at 90°C or
194°F



Chemical and UV
sterilizable



Shock absorbing
The construction of the heel
makes it very shock absorbing.



Thermoplastic elastomer
The shoe is made of TPE. This is why the shoe
remains flexible and can be sterilised on high
temperatures without any deformation.



Weight: 270 gr

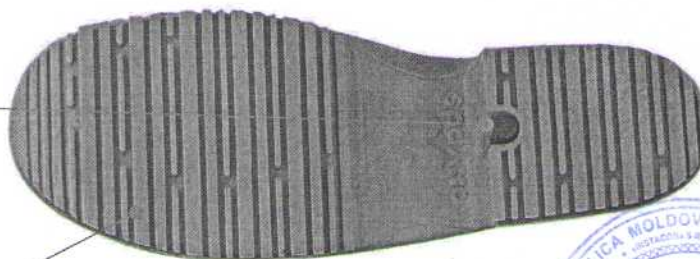
The average weight of the shoe is 9.52
ounces or 270 grams.



Anti-static ESD
The shoe has a plug that provides
dissipation of static electricity to be
conform with the ESD standard.



Slip resistant SRA
The outsole provides excellent grip,
both on wet and dry floors and
complies with the SRA standard.



Recommended for

- Operating room personnel
- Professionals who help and assist patients in the shower
- Healthcare professionals
- Nurses and caregivers
- Cleaning personnel
- Laundry personnel

Sizes

EU	35/36	37/38	39/40	41/42	43/44*	45/46*
UK	2.5/3.5	4/5	5.5/6.5	7/8	9/9.5	10.5/11
US	3/4	4.5/5.5	6.5/7.5	8/9	10/10.5	11.5/12

(*) The colors fuchsia and purple are only available from size 36 till 42