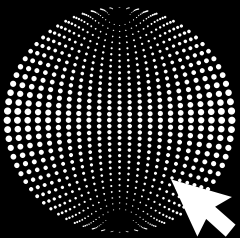


Wholesale portal



equip.me

Get Them Equipped





Office & Showroom:

Kiisa 8, Tallinn

Estonia 11313

+372 584 52 401

sales@equip.me

www.equip.me

Contents

	4
Cooking Equipment	
	8
Fast Food Equipment	
	22
Refrigeration Equipment	
	30
Servery Equipment	
	34
Bar & Coffee Equipment	
	40
Food Processing Equipment	
	54
Packaging Equipment	
	56
Hygiene Equipment	
	58
Gastronorms & Trays	

COOKING EQUIPMENT

HURAKAN

Convection Ovens
Sous Vide Cookers
Dehydrators
Pizza Ovens
Provers



Convection Ovens



Model	HKN-XFT133	HKN-XFT133M	HKN-XFT133L	HKN-XF023
Trays load	4	4	3	4
Supported trays	450x300	435x305	450x300	335x325
Temperature, °C	0...250	0...300	0...250	0...200
Voltage, V	230	230	230	230
Power, kW	2,8	2,52	2,5	2,5
External dimensions, mm	620x605x560	595x600x580	580x570x425	550x515x380
Net weight, kg	31,6	36	20	22

Sous Vide Cookers



Model	HKN-SV12	HKN-SV15	HKN-SV40
Working temperature, °C	up to 90	25...99,9	25...99
Voltage, V	230	230	230
Power, kW	1,2	0,85	1,5
External dimensions, mm	93x115x396	90x190x365	150x70x340
Net weight, kg	1,8	1,2	2,4

Dehydrators



Model	HKN-DHD6	HKN-DHD10	HKN-DHD12M	HKN-DHD16M
Power, kW	0,36	1	1	1
Voltage, V	230	230	230	230
Grids	6	10	12	16
Grid size, mm	285x200	390x390	385x283	490x370
Temperature, °C	30-90	30-70	30-90	30-90
Timer, hours	24	15	24	24
External dimensions, mm	300x360x390	420x580x400	464x402x440	520x510x670
Net weight, kg	5,6	16	11,5	21,4

Pizza Ovens



Model	HKN-MD1	HKN-MD11
Chambers	1	2
Power, kW	2	3
Voltage, V	230	230
Temperature, °C	50...350	50...350
Chamber dimensions, mm	415x400x120	415x400x120
External dimensions, mm	560x485x265	560x485x430
Net weight, kg	24	33



Model	HKN-MD05	HKN-MD0505
Chambers	1	2
Power, kW	1,13	2,26
Voltage, V	230	230
Temperature, °C	60...300	60...300
Grid dimensions, mm	360x340	360x340
External dimensions, mm	485x355x195	485x355x340
Net weight, kg	8,2	15



Model	HKN-HEP1	HKN-HEP2
Chambers	1	2
Power, kW	4,2	8,4
Voltage, V	230	230
Temperature, °C	100...450	100...450
Chamber dimensions, mm	610x610x140	610x610x140
External dimensions, mm	890x845x460	890x845x750
Net weight, kg	48	90

Provers



Model	HKN-XLT15M	HKN-XLT15MWS	HKN-XLT25M	HKN-XLT25MWS
Trays load	5	5	10 (2x5)	10 (2x5)
Supported trays	600x400	600x400	600x400	600x400
Chamber dimensions, mm	485x770x650	485x770x650	720x1190x650	720x1190x650
Temperature, °C	30...85	30...85	30...85	30...85
Water connection	-	+	-	+
Voltage, V	230	230	230	230
Power, kW	2,6	2,6	2,8	2,8
External dimensions, mm	570x880x920	570x880x920	1220x815x940	1220x815x940
Net weight, kg	21	22	45	46



Retarder

Model	HKN-XLT193	HKN-XLT193M	HKN-XLT196M	HKN-KAF1B
Trays load	13	13	16	16
Supported trays	600x400	600x400	600x400	600x400
Grid spacing, mm	94	94	94	80
Temperature, °C	30...85	30...85	30...85	2...50
Water connection	-	-	-	+
Voltage, V	230	230	230	230
Power, kW	2,1	2,6	2,6	1,5
External dimensions, mm	500x700x1560	500x700x1560	500x700x1840	600x960x2050
Net weight, kg	42	42	50	133

FAST FOOD EQUIPMENT

Induction Cookers
Toasters
Electric Griddles
Contact Grills
Salamanders
Roller Grills
Hot Dog Machines
Crepe Makers
Electric Fryers
Waffle Makers
Popcorn Machines
Candy Floss Machines
Rotisseries
Doner Kebab Grills
Kebab Slicers
Smokers
Flaming Burners
Rice Cookers
Pasta Cookers
Food Warmers
Heated Displays
Boilers

Induction Cookers



Model	HKN-ICF18T	HKN-ICF35M	HKN-ICF35T
Power, kW	2	3,5	3,5
Voltage, V	230	230	230
Control panel	touch sensitive	digital	touch sensitive
External dimensions, mm	290x370x35	326x415x110	340x423x130
Net weight, kg	2	4,6	5,5



Model	HKN-ICF35D	HKN-ICF50D	HKN-ICF70D
Power, kW	3,5	5	2x3,5
Voltage, V	230	230	230
Control panel	digital with joystic	joystic	digital with joystic
External dimensions, mm	328x396x110	410x500x200	660x396x110
Net weight, kg	4	8	9,9



Model	HKN-ICF70D2V	HKN-ICF35DX47
Power, kW	2x3,5	4x3,5
Voltage, V	230	230
Control panel	digital with joystic	digital with joystic
External dimensions, mm	330x810x110	700x830x150
Net weight, kg	9,9	19,35

Induction Wok Cookers



Model	HKN-ICW35M WOK	HKN-ICW50D WOK
Power, kW	3,5	5
Voltage, V	230	230
Control panel	digital	joystic
External dimensions, mm	350x450x200	410x500x200
Net weight, kg	5,7	8

Toasters



Model	HKN-LONG VV	HKN-TOST118	HKN-TOST136
Power, kW	1,7	1,3	1,7
Voltage, V	230	230	230
Production capacity, pcs/h	300	150-180	360
External dimensions, mm	362x502x330	288x418x502	340x531x336
Net weight, kg	9,6	12,5	10,25



Model	HKN-TOP3	HKN-TOP6
Power, kW	2	4,5
Voltage, V	230	230
Heating elements	4	9
External dimensions, mm	460x270x300	460x270x420
Net weight, kg	7,8	10,6



Model	HKN-TPT4	HKN-TPT6
Power, kW	2,24	3,2
Voltage, V	230	230
Capacity, pcs	4	6
External dimensions, mm	330x220x215	420x220x215
Net weight, kg	4,5	6

Electric Griddles



Model	HKN-PSL550	HKN-PSR550	HKN-PSL730	HKN-PSLR730
Power, kW	3	3	4,4	4,4
Voltage, V	230	230	230	230
Temperature, °C	50...300	50...300	50...300	50...300
Hotplate	smooth	ribbed	smooth	1/3 ribbed 2/3 smooth
External dimensions, mm	550x430x235	550x430x235	730x470x235	730x470x235
Net weight, kg	15,8	15,8	24,6	24,6

**Contact
Grills**



Model	HKN-PE22FT	HKN-PE22L	HKN-PE22R
Power, kW	1,8	1,8	1,8
Voltage, V	230	230	230
Hotplate	smooth	top ribbed, bottom smooth	ribbed
Top surface size, mm	215x215	215x215	215x215
Bottom surface size, mm	220x230	220x230	220x230
External dimensions, mm	300x300x200	300x300x200	300x300x200
Net weight, kg	14,2	14,2	14,2



Model	HKN-PE34R	HKN-PE44MT	HKN-PE44R
Power, kW	2,2	3,6	3,6
Voltage, V	230	230	230
Hotplate	ribbed	1/2 ribbed 1/2 smooth	ribbed
Top surface size, mm	340x220	215x215x2	215x215x2
Bottom surface size, mm	340x230	475x230	475x230
External dimensions, mm	430x370x210	570x370x210	570x370x210
Net weight, kg	19	21,3	27,2

Salamanders



Model	HKN-SAL450MBM	HKN-SAL600MBM	HKN-SLE570	HKN-SLE580
Power, kW	2,8	4	2	2,2
Voltage, V	230	230	230	230
Heat zones	1	2	1	1
Temperature, °C	50...300	50...300	50...300	50...300
Chamber dimensions, mm	-	-	460x270x170	420x350x280
External dimensions, mm	450x480x520	600x480x530	570x340x250	580x420x380
Net weight, kg	26,3	38,5	11,5	13

Roller Grills



Model	HKN-GW5MC	HKN-GW7MC	HKN-GW9MC
Power, kW	0,75	1,05	1,35
Voltage, V	230	230	230
Rolls	5	7	9
External dimensions, mm	580x270x180(400)	580x350x180(400)	580x420x180(400)
Net weight, kg	9	12,3	14,6



Model	HKN-GW5M	HKN-GW7M
Power, kW	0,75	1,05
Voltage, V	230	230
Rolls	5	7
External dimensions, mm	580x255x180	580x330x180
Net weight, kg	8,5	9



Model	HKN-GW9M	HKN-GW11M
Power, kW	1,35	1,65
Voltage, V	230	230
Rolls	9	11
External dimensions, mm	580x410x180	580x480x180
Net weight, kg	13	16



Model	HKN-GW5M-GC	HKN-GW7M-GC
External dimensions, mm	580x257x220	580x332x220

Hot Dog Machines



Model	HKN-Y00	HKN-Y02	HKN-Y03
Power, kW	0,45	0,62	0,7
Voltage, V	230	230	230
Bun spikes	-	2	3
External dimensions, mm	260x310x410	430x310x410	480x310x410
Net weight, kg	6,6	7,7	9



Model	HKN-Y04	HKN-Y06
Power, kW	0,78	0,95
Voltage, V	230	230
Bun spikes	4	6
External dimensions, mm	480x310x410	635x310x410
Net weight, kg	9,3	10,9

Corn Crispy Makers



Model	HKN-HCP5	HKN-HCP6
Power, kW	1,55	1,55
Voltage, V	230	230
Capacity, pcs	5	6
External dimensions, mm	360x330x245	360x330x245
Net weight, kg	7,5	8,5

Crêpe Makers



Model	HKN-CSE400	HKN-CDE400	HKN-CSE400C
Power, kW	3	6	3
Voltage, V	230	230	230
Hotplates	1	2	1
Hotplate diameter, mm	400	400	400
External dimensions, mm	490x450x230	880x450x230	400x400x200
Net weight, kg	12,8	21,6	11,2

Electric Fryers



Model	HKN-FT4N	HKN-FT6N	HKN-FT8N	HKN-FT10N
Power, kW	2,5	2,5	3,25	4
Voltage, V	230	230	230	230
Capacity, l	4	6	8	10
Temperature, °C	60...190	60...190	60...190	50...190
External dimensions, mm	265x385x310	260x460x325	315x465x380	280x460x325
Net weight, kg	5,4	4	8	7,5



Model	HKN-FT12N	HKN-FT44N	HKN-FT66N	HKN-FT88N
Power, kW	3,25	5	5	6,5
Voltage, V	230	230	230	230
Capacity, l	12	4+4	6+6	8+8
Temperature, °C	50...190	60...190	60...190	60...190
External dimensions, mm	290x485x450	480x385x310	530x460x325	605x465x380
Net weight, kg	9,8	10,2	8	14,6



Model	HKN-FT1010N	HKN-FT1212N	HKN-FR6L	HKN-FR66L
Power, kW	8	6,5	2,5	5
Voltage, V	230	230	230	230
Capacity, l	10+10	12+12	6	6+6
Temperature, °C	50...190	50...190	60...200	60...200
External dimensions, mm	570x460x325	580x485x450	285x450x310	570x450x310
Net weight, kg	11	17,6	4,6	8,6

Doughnut Fryers



Model	HKN-EF16	HKN-EF26
Power, kW	3,9	7,8
Voltage, V	230	230
Capacity, l	29,4	38,2
Temperature, °C	50...190	50...190
External dimensions, mm	730(1000)x540x265	930(1460)x540x265
Net weight, kg	10,9	16,3

Waffle Makers



Model	HKN-GES1M	HKN-GES4M	HKN-GES5HK	HKN-GES7	HKN-GES8
Power, kW	1,2	1,2	1,4	1,8	1,2
Voltage, V	230	230	230	230	230
Waffle type	Triangle	Round	Hong Kong style	Lolly	Heart
External dimensions, mm	250x360x270	250x360x270	225x420x290	310x365x230	250x380x270
Net weight, kg	5,4	6,4	5,3	10,6	6,2



Model	HKN-GES2M	HKN-GED2M	HKN-GES2L	HKN-GES14	HKN-GES230
Power, kW	1,6	3,2	1,8	1,6	1,4
Voltage, V	230	230	230	230	230
Waffle type	Belgian	Belgian	Belgian	Sandwich	Nut
External dimensions, mm	300x380x250	630x380x250	305x382x233	380x350x245	350x305x195
Net weight, kg	7,9	20,5	8,9	9,65	7,3

Donut Waffle Makers



Model	HKN-GES6D	HKN-GES12D
Power, kW	1,5	1,5
Voltage, V	230	230
Donuts	6	12
Donut diameter, mm	80	50
External dimensions, mm	335x270x245	335x270x245
Net weight, kg	8	8

Dispensers for Batter



Model	HKN-DD01
Capacity, l	1
External dimensions, mm	260x135x270
Net weight, kg	0,49

Popcorn Machines



Model	HKN-PCORN	HKN-PCORN2	HKN-PCORN-T
Power, kW	1,3	1,3	1,3
Voltage, V	230	230	230
Production capacity, bowl/min	1/2	1/2	1/2
External dimensions, mm	510x380x680	560x420x760	940x450x1540
Net weight, kg	14,35	16	30

Candy Floss Machines



Model	HKN-C1	HKN-C2	HKN-C3	HKN-C2-T
Power, kW	0,9	0,9	0,9	0,9
Voltage, V	230	230	230	230
Diameter, mm	520	520	730	520
Production capacity, kg/h	2,8	2,8	2,8	2,8
External dimensions, mm	520x520x500	520x520x500	730x730x500	945x520x890
Net weight, kg	14	14	15	19,5

Candy Floss Machines Cover



Model	HKN-PC530C	HKN-PC730C
Diameter, mm	520	730
Supported models	HKN-C1/C2/C2-T	HKN-C3

Sticks for Candy Floss



Model	HKN-STICK
Dimensions, mm	3x3x300
Quantity	90... 100

Smokers



Model	HKN-SMG
External dimensions, mm	90x55x110

Flaming Burners



Model	HKN-FLB
External dimensions, mm	122x50x154



Rotisseries



Model	HKN-OGE12	HKN-OGE16
Power, kW	4,5	6
Voltage, V	230	230
Capacity, pcs	12	16
External dimensions, mm	810x630x610	1027x660x805
Net weight, kg	52,5	61

Doner Kebab Grills



Model	HKN-GRM20	HKN-GRM30	HKN-GR30
Power, kW	4	6	8,1
Voltage, V	230	230	400
Heat zones	2	3	3
Spit length, mm	40	60	65
Rotation speed, rpm	manual	manual	2,5
External dimensions, mm	450x600x582	450x600x762	534x607x960
Net weight, kg	16,5	18	31

Kebab Slicers



Model	HKN-ODKM
Power, kW	0,08
Voltage, V	230
External dimensions, mm	190x110x165
Net weight, kg	1,6

Rice Cookers



Model	HKN-SDR80	HKN-SDR100	HKN-SDR130	HKN-SDR230
Power, kW	1,3	1,6	2	3
Voltage, V	230	230	230	230
Capacity, l	8	10	13	23
Maximum load (raw rice), kg	2,5	3	3,5	5
External dimensions, mm	378x378x240	410x410x290	440x440x315	485x485x320
Net weight, kg	3,65	4,65	5,1	8,2



Model	HKN-SR180	HKN-SR270	HKN-SR42	HKN-SR56M
Power, kW	1,95	2,85	1,6	1,9
Voltage, V	230	230	230	230
Raw rice capacity, l	6	9	4,2	5,6
External dimensions, mm	445x445x418	545x545x455	420x420x360	460x460x375
Net weight, kg	10,4	15,4	7	8,1

Rice Warmers



Model	HKN-RT190L	HKN-RT210
Power, kW	-	0,11
Voltage, V	-	230
Capacity, l	19	21
External dimensions, mm	400x400x325	420x420x465
Net weight, kg	5	6,9

Rice Cooker Bowl



Model	HKN-SR56M
-------	-----------

Pasta Cookers



⊕ Baskets included ⊕ Baskets included

Model	HKN-EKT40	HKN-EKT60
Power, kW	4	6
Voltage, V	230	230
Capacity, l	2x8	3x8
Temperature, °C	50-110	50-110
External dimensions, mm	420x470x280	590x555x280
Net weight, kg	8,5	13,5

Spare Basket



Model	HKN-EKT40/60
-------	--------------

Dim Sum Steamers



Model	HKN-DS1
Power, kW	12
Voltage, V	400
Baskets included	5
Basket diameter, mm	560
External dimensions, mm	650x650x750(1590)
Net weight, kg	22,5

Food Warmers



⊕ GN1/1-20

Model	HKN-RH1	HKN-RH2	HKN-RH3
Power, kW	0,7	1	0,65
Voltage, V	230	230	230
External dimensions, mm	330x560x470	340x605x545	800x710x665
Net weight, kg	7,4	7	28

Heated Displays



For pizza

Model	HKN-WD1	HKN-WD2	HKN-WD3M	HKN-D32
Power, kW	0,85	0,84	1,84	0,65
Voltage, V	230	230	230	230
Temperature, °C	25...85	30...90	50...110	25...85
External dimensions, mm	350x425x500	660x466x610	655x437x610	490x490x810
Net weight, kg	11	18	32,2	15



Model	HKN-WD10B	HKN-WD20B	HKN-WD30B
Power, kW	0,62	0,62	1,2
Voltage, V	230	230	230
Temperature, °C	30...110	30...110	30...110
Water Tank	-	*	*
External dimensions, mm	520x410x520	660x450x610	970x430x620
Net weight, kg	16,5	19,3	35

Boilers



Model	HKN-HVC10	HKN-HVC20	HKN-HVC35
Power, kW	2	2	2,5
Voltage, V	230	230	230
Capacity, l	10	20	34
Production capacity, l/min	10/31	20/48	35/60
Water supply	manual	manual	manual
Taps	1	1	1
External dimensions, mm	240x240x450	290x290x460	385x385x485
Net weight, kg	3,9	4,7	5,2



Boilers



Model	HKN-HVN10	HKN-HVN20	HKN-HVN30	HKN-HVN40
Power, kW	2	2,5	3	3
Voltage, V	230	230	230	230
Capacity, l	7,6	17,3	22	31
Production capacity, l/min	7,6/31	17,3/48	22/52	31/80
Water supply	manual	manual	manual	manual
Temperature, °C	30...110	30...110	30...110	30...110
External dimensions, mm	330x310x420	370x350x550	460x440x440	460x440x550
Net weight, kg	2,8	3,6	4,2	4,6



Model	HKN-HVZ22 BLACK	HKN-HVZ25M BLACK	HKN-HVZ25MD	HKN-HVZ50MD
Power, kW	2,5	2,5	2	3
Voltage, V	230	230	230	230
Capacity, l	5	8	8	20
Production capacity, l/hour	22	25	25	50
Water supply	mains	mains	mains	mains
Taps	1	1	2	2
External dimensions, mm	190x360x420	190x240x500	220x270x510	220x270x650



Model	HKN-HVZ35M BLACK	HKN-HVZ60 BLACK	HKN-HVZ80MDHC	HKN-HVZ90 BLACK
Power, kW	2,5	3	6	3
Voltage, V	230	230	400	230
Capacity, l	12	20	40	30
Production capacity, l/hour	35	60	80	90
Water supply	mains	mains	mains	mains
Taps	1	1	2	1
External dimensions, mm	190x240x580	190x280x690	430x260x720	190x340x740

REFRIGERATION EQUIPMENT

Refrigerated and Freezer Cabinets
Refrigerated and Freezer Counters
Saladettes
Refrigerated Topping Showcases
Blast Chillers and Shock Freezers
Chest Freezers
Ice-Cream Freezers
Refrigerated Display Cases
Wine Coolers

Refrigerated and Freezer Cabinets



Model	HKN-GX650TN	HKN-GX650BT	HKN-GX1410TN	HKN-GX1410BT
Capacity, l	650	650	1300	1300
Temperature, °C	-2 ... +8	-18 ... -22	-2 ... +8	-18 ... -22
Cooling system	dynamic	dynamic	dynamic	dynamic
Refrigerant	R290	R290	R290	R290
Voltage, V	230/50	230/50	230/50	230/50
Power, W/h	220	480	400	770
External dimensions, mm	740x830x2010	740x830x2010	1480x830x2010	1480x830x2010

Refrigerated and Freezer Counters



Model	HKN-GN2TN	HKN-GN3TN	HKN-GNL3TN
Capacity, l	282	417	368
Temperature, °C	-2 ... +8	-2 ... +8	+2 ... +8
Cooling system	dynamic	dynamic	static with fan
GN supported	GN 1/1	GN 1/1	GN 1/1
Refrigerant	R290	R290	R290
Voltage, V	230/50	230/50	230/50
Power, W/h	220	230	240
External dimensions, mm	1360x700x850	1795x700x850	1365x700x876



Model	HKN-GN3TN-222	HKN-GN4TN
Capacity, l	417	553
Temperature, °C	-2 ... +8	-2 ... +8
Cooling system	dynamic	dynamic
GN supported	GN 1/1	GN 1/1
Refrigerant	R290	R290
Voltage, V	230/50	230/50
Power, W/h	230	350
External dimensions, mm	1795x700x850	2230x700x650

Refrigerated and Freezer Counters



Model	HKN-GN2BT	HKN-GN3BT
Capacity, l	282	417
Temperature, °C	-18 ... -22	-18 ... -22
Cooling system	dynamic	dynamic
GN supported	GN 1/1	GN 1/1
Refrigerant	R290	R290
Voltage, V	230/50	230/50
Power, W/h	520	560
External dimensions, mm	1360x700x850	1795x700x850

Saladettes



Model	HKN-PZLG2	HKN-PZLG3	HKN-PZLGV2	HKN-PZLGV3
Capacity, l	240	402	240	402
Temperature, °C	+2 ... +8	+2 ... +8	+2 ... +8	+2 ... +8
Cooling system	static with fan	static with fan	static with fan	static with fan
Glass cover	-	-	*	*
Countertop GN capacity	5xGN1/6	8xGN1/6	5xGN1/6	8xGN1/6
GN supported	GN 1/1	GN 1/1	GN 1/1	GN 1/1
Refrigerant	R600a	R290	R600a	R290
Climate Class	SN - T	SN - T	SN - T	SN - T
Voltage, V	230/50	230/50	230/50	230/50
Power, W/h	170	240	170	240
External dimensions, mm	900x700x1075	1365x700x1075	900x700x1075	1365x700x1075



Model	HKN-GNL2TN-22	HKN-GNL3TN-222	HKN-PZG3-116 ROCK
Capacity, l	240	368	580
Temperature, °C	+2 ... +8	+2 ... +8	-2 ... +8
Cooling system	static with fan	static with fan	dynamic
GN supported	GN 1/1	GN 1/1	600x400
Refrigerant	R600a	R290	R290
Voltage, V	230/50	230/50	230/50
Power, W/h	170	240	320
External dimensions, mm	900x700x850	1365x700x876	2020x800x1000

Refrigerated Topping Showcases



Model	HKN-VRX1200/330	HKN-VRX1200/380
Power, kW	0,11	0,11
Voltage, V	230	230
Temperature, °C	+2...+8	+2...+8
Cooling system	static	static
Capacity	5xGN1/4	4xGN1/3
Refrigerant	R600a	R600a
External dimensions, mm	1200x335x435	1200x395x435

Model	HKN-VRX1500/330	HKN-VRX1500/380	HKN-VRX2000/380
Power, kW	0,11	0,11	0,11
Voltage, V	230	230	230
Temperature, °C	+2...+8	+2...+8	+2...+8
Cooling system	static	static	static
Capacity	7xGN1/4	6xGN1/3	9xGN1/3
Refrigerant	R600a	R600a	R600a
External dimensions, mm	1500x335x435	1500x395x435	2000x395x435

Blast Chillers and Shock Freezers



Model	HKN-BCF5M	HKN-BCF10M	HKN-BCF14M
Power, kW	0,75	0,98	1,2
Voltage, V	230	230	230
+70 °C to +3 °C, 90 min, kg	20	40	60
+70 °C to -18 °C, 240 min, kg	15	28	38
Cooling system	dynamic	dynamic	dynamic
Core probe	+	+	+
GN1/1-40 or 400x600 capacity	5	10	14
Auto defrost	+	+	+
External dimensions, mm	800x800x930	800x800x1515	800x800x1763
Net weight, kg	108	160	190

Refrigerators



Model	HKN-BC46	HKN-BC60	HKN-BC145
Power, kW	0,08	0,08	0,11
Voltage, V	230	230	230
Temperature, °C	0...+10	0...+10	0...+10
Capacity, l	46	58	105
Noise level, dB	39	39	39
Refrigerant	R600a	R600a	R600a
External dimensions, mm	485x435x525	480x520x525	480x520x840
Net weight, kg	16	18,5	26

Backbar Refrigerators



Sliding doors

Sliding doors

Model	HKN-DB125H	HKN-DB205S	HKN-DB335S
Power, kW	0,16	0,25	0,32
Voltage, V	230	230	230
Temperature, °C	+2...+10	+2...+10	+2...+10
Capacity, l	113	185	300
Noise level, dB	45	50	50
Refrigerant	R600a	R600a	R600a
External dimensions, mm	555x520x865	865x520x865	1350x520x865
Net weight, kg	32	47	69

Minibar Refrigerators



Thermoelectric cooler

Model	HKN-BCH40	HKN-BCL50
Power, kW	0,07	0,07
Voltage, V	230	230
Temperature, °C	+5...+15	0...+15
Capacity, l	40	50
External dimensions, mm	405x443x545	478x443x514
Net weight, kg	13,2	14,2

Showcase Freezers



Model	HKN-UF100G	HKN-UF50G
Power, kW	0,19	0,15
Voltage, V	230	230
Temperature, °C	-15...-22	-15...-22
Capacity, l	88	42
Noise level, dB	50	50
Refrigerant	R290	R290
External dimensions, mm	595x520x675	570x500x510
Net weight, kg	37	30

Wine Coolers



Model	HKN-WNC25T	HKN-WNC35T
Power, kW	0,065	0,065
Voltage, V	230	230
Temperature, °C	+8...+18	+10...+18
Capacity, bottles	8	12
Temperature zones	1	1
External dimensions, mm	252x500x453	252x500x638
Net weight, kg	9,5	12



Wooden shelves

Model	HKN-WNC50T	HKN-WNC69TD	HKN-WNC128CW
Power, kW	0,065	0,13	0,08
Voltage, V	230	230	230
Temperature, °C	+12...+18	+8...+18 / +12...+18	+5...+18
Capacity, bottles	18	24	51
Temperature zones	1	2	1
External dimensions, mm	345x520x645	430x520x740	495x565x848
Net weight, kg	14,5	19,5	34



Wooden shelves

Model	HKN-WNC160CD	HKN-WNC160CDW
Power, kW	0,08	0,08
Voltage, V	230	230
Temperature, °C	+5...+18	+5...+18
Capacity, bottles	55	55
Temperature zones	2	2
External dimensions, mm	510x480x1262	510x480x1262
Net weight, kg	43,5	43,5

Ice-Cream Teppans



Model	HKN-FIC10	HKN-FIC50
Power, kW	1,3	2,2
Voltage, V	230	230
Surface, mm	Ø 330	Ø 500
External dimensions, mm	580x470x660	650x650x880
Net weight, kg	30	51



Model	HKN-FIC50S	HKN-FIC50SXL
Power, kW	2,2	2,4
Voltage, V	230	230
Surface, mm	500x500	500x500
External dimensions, mm	650x650x880	1060x750x900
Net weight, kg	57	85,5

Refrigerated Display Cases For Ice-Cream



Model	HKN-ICS67
Temperature, °C	-18...-25
Capacity, l	67
Refrigerant	R600a
Gastronorms	4 x 335x140x115
Voltage, V	230
Power, kW	0,16
External dimensions, mm	805x666x358
Net weight, kg	30

**Refrigerated
Display Cases**



Model	HKN-LPD100	HKN-LPD130
Temperature, °C	0...+12	0...+12
Capacity, l	100	130
Refrigerant	R600a	R600a
Rotational shelves	-	-
Voltage, V	230	230
Power, kW	0,19	0,23
External dimensions, mm	705x472x687	797x590x685
Net weight, kg	39	66



Model	HKN-UPD58	HKN-UPD78
Temperature, °C	0...+12	0...+12
Capacity, l	58	78
Refrigerant	R600a	R600a
Rotational shelves	-	-
Voltage, V	230	230
Power, kW	0,18	0,18
External dimensions, mm	428x386x810	428x386x960
Net weight, kg	30	33,8



Model	HKN-UPD72	HKN-UPD100	HKN-UPD108
Temperature, °C	0...+10	+2...+8	0...+12
Capacity, l	72	100	108
Refrigerant	R600a	R600a	R600a
Rotational shelves	auto	-	auto
Voltage, V	230	230	230
Power, kW	0,17	0,21	0,23
External dimensions, mm	450x450x1060	480x480x1030	470x470x870
Net weight, kg	38,5	50	52

SERVERY EQUIPMENT

Soup Kettles
Drink Dispensers
Bain-Maries
Infrared Heat Lamps
Glass Dispensers
Plate Warmer Carts
Chocolate Heaters
Chaffing Dishes

Drink Dispensers



Model	HKN-DB81	HKN-DB82	HKN-DB83
Capacity, l	1x8	2x8	3x8
External dimensions, mm	260x350x580	540x350x580	820x350x580
Net weight, kg	2,6	5,4	7,7



Model	HKN-DELICE5	HKN-DELICE10
Power, kW	0,44	0,44
Voltage, V	230	230
Capacity, l	5	10
External dimensions, mm	400x320x470	400x320x570
Net weight, kg	7	8,3

Soup Kettles



Model	HKN-FWP	HKN-FWP2	HKN-SB57
Power, kW	0,4	0,4	0,3
Voltage, V	230	230	230
Capacity, l	10	10	5,7
External dimensions, mm	340x340x370	340x340x360	270x270x370
Net weight, kg	4,6	4,6	3

Bain-Maries

Drain tap

Model	HKN-BM3
Power, kW	1,2
Voltage, V	230
Temperature, °C	30...90
Capacity, l	36
External dimensions, mm	590x350x280
Net weight, kg	9,7



Infrared Heat Lamps



⊕ Light bulb included

Model	HKN-DL775	HKN-DL800	HKN-DL825
Power, kW	0,25	0,25	0,25
Voltage, V	230	230	230
External dimensions, mm	190x190x600 (1500)	275x275x600 (1500)	175x175x600 (1500)
Net weight, kg	1,3	1,5	1,2

Chocolate Heaters



⊕ 2 GN1/6-100 with lid

⊕ 3 GN1/6-100 with lid

Model	HKN-CHM02	HKN-CHM03
Bowls	2	3
Temperature, °C	up to +110	up to +110
Power, kW	0,8	1,2
Voltage, V	230	230
External dimensions, mm	220x480x160	220x660x160
Net weight, kg	7	9

Chaffing Dishes



Model	HKN-CD61SLR	HKN-CD61SLRG	HKN-CD91CLR
Capacity, l	9	9	6
External dimensions, mm	635x425x440	635x425x440	475x470x450
Net weight, kg	8,2	8,2	6,2

Glass Dispensers



Model	HKN-WMF2M	HKN-WMF3M	HKN-WMF4M
Dispensing slots	2	3	4
Capacity, pcs	120	180	240
Glass diameter, mm	1 slot: 79...89 2 slot: 70...79	1 slot: 79...89 2 slot: 79...89 3 slot: 70...79	1 slot: 79...89 2 slot: 79...89 3 slot: 70...79 4 slot: 70...79
External dimensions, mm	200x700x350	200x700x500	200x700x650
Net weight, kg	6,8	9,5	12,7

Plate Warmer Carts



Model	HKN-TSH1	HKN-TSH2
Power, kW	0,4	0,8
Voltage, V	230	230
Dispensers	1	2
Plate diameter, mm	245...300	245...300
External dimensions, mm	450x570x900	450x950x900
Net weight, kg	30	48



BAR & COFFEE EQUIPMENT

Coffee Machines

Coffee Grinders

Blenders

Citrus Juicers

Slow Juicers

Cold Drink Dispensers and Slush Machines

Milk Mixers

Ice Crushers

Ice Cube Makers

Hollow Ice Makers

Granulated Ice Makers

Glass Polishing Machines

Glass Frosters

Coffee Machines



Model	HKN-ME709	HKN-ME715
Power, kW	1,25	1,25
Voltage, V	230	230
Capacity, l	1,6	2
Coffee beans capacity, g	200	300
Production capacity, cups/h	60...70	50...60
External dimensions, mm	400x320x365	280x438x368
Net weight, kg	12,7	9,6



Model	HKN-ME717	HKN-CM2
Power, kW	1,25	1,25
Voltage, V	230	230
Capacity, l	2	2x2
Coffee beans capacity, g	300	-
Production capacity, cups/h	60...70	-
External dimensions, mm	410x338x355	210x345x430
Net weight, kg	11	4,5

Coffee Grinders



Model	HKN-M6	HKN-MC6
Power, kW	0,2	0,2
Voltage, V	230	230
Coffee beans capacity, kg	0,5	0,5
External dimensions, mm	230x140x430	230x140x430
Net weight, kg	5	4,3

Blenders



Model	HKN-BLW2	HKN-BLW3 RED	HKN-HBH850	HKN-HBH850 PRO
Power, kW	1,2	1,3	1,8	0,95
Voltage, V	230	230	230	230
Cup capacity, l	2	2,5	2,7	2
Rotation speed, rpm	23000...26000	23000...26000	12000...28000	4000...38000
Timer, s	-	-	+	30/60/90
Pulse mode	+	+	+	+
External dimensions, mm	205x230x510	210x240x550	200x220x500	290x260x460
Net weight, kg	3,4	3,8	7,3	6,2



Model	HKN-HBH750	HKN-HBH830
Power, kW	1,6	1,6
Voltage, V	230	230
Cup capacity, l	6	3,9
Rotation speed, rpm	23000...26000	23000...26000
Timer, s	-	+
Pulse mode	+	+
External dimensions, mm	239x219x599	220x310x580
Net weight, kg	5,8	5,3

Citrus Juicers



Manual

Model	HKN-SPM	HKN-CFV60	HKN-CFV90	HKN-CJ01
Power, kW	0,18	0,7	0,37	-
Voltage, V	230	230	230	-
Rotation speed, rpm	1800	17000-20000	2800	-
External dimensions, mm	340x230x365	310x230x450	345x320x380	290x185x420
Net weight, kg	4	4,3	12,4	6,5

Slow Juicers



Model	HKN-CS600H	HKN-CS600L
Power, kW	0,3	0,3
Voltage, V	230	230
External dimensions, mm	150x250x500	150x250x500
Net weight, kg	6,4	6,4

Cold Drink Dispensers



Model	HKN-LSJ18Lx1	HKN-LSJ18Lx2	HKN-LSJ18Lx3
Power, kW	0,2	0,3	0,35
Voltage, V	230	230	230
Capacity, l	1x18	2x18	3x18
Temperature, °C	+7...+12	+7...+12	+7...+12
External dimensions, mm	345x445x700	460x445x700	710x445x700
Net weight, kg	20	28	39

Slush Machines



Model	HKN-MT1	HKN-MT2	HKN-MT3
Power, kW	0,5	0,6	0,8
Voltage, V	230	230	230
Capacity, l	1x15	2x15	3x15
Temperature, °C	-2...-3	-2...-3	-2...-3
External dimensions, mm	288x550x740	425x550x740	603x550x740
Net weight, kg	40	45	63

Milk Mixers



Model	HKN-FR1GM	HKN-FR2GM
Power, kW	0,08	0,16
Voltage, V	230	230
Cup capacity, l	1	2x1
Rotation speed, rpm	11 000	11 000
External dimensions, mm	160x190x520	360x190x520
Net weight, kg	3,5	6,5

Ice Crushers



Model	HKN-TRGM	HKN-TR65
Power, kW	0,08	0,3
Voltage, V	230	230
Ice bin capacity, l	3	0,7
Rotation speed, rpm	1 000	2 000
External dimensions, mm	240x170x370	425x200x305
Production capacity, kg/h	12	65
Net weight, kg	3,66	5

Glass Polishing Machines



Model	HKN-GP1000	HKN-GP1500
Power, kW	1,35	2,5
Voltage, V	230	230
Brushes, pcs	5	8
Production capacity, pcs/h	330	660
External dimensions, mm	330x300x510	580x310x510
Net weight, kg	15	22,5

Glass Frosters



Model	HKN-GF1000
Power, kW	0,02
Voltage, V	230
External dimensions, mm	130x282x538
Net weight, kg	4,3

Ice Cube Makers



Model	HKN-IMF15	HKN-IMF35
Power, kW	0,15	0,4
Voltage, V	230	230
Water supply	manual	manual / mains
Production capacity, kg/day	15	35
Ice bin capacity, kg	1	3
Cooling system	air	air
External dimensions, mm	300x360x360	410x380x480
Net weight, kg	13,5	21

Hollow Ice Makers



Model	HKN-IMF12M	HKN-IMF18	HKN-IMF26	HKN-IMF50
Power, kW	0,15	0,15	0,22	0,28
Voltage, V	230	230	230	230
Water supply	manual	manual	mains	mains
Production capacity, kg/day	12	18	26	50
Ice bin capacity, kg	0,6	1,5	7	14
Cooling system	air	air	air	air
External dimensions, mm	242x358x328	410x360x410	398x542x682	400x510x825
Net weight, kg	10	14	27,6	30,6

Granulated Ice Makers



Model	HKN-GB20	HKN-GB50	HKN-GB85
Power, kW	0,28	0,28	0,42
Voltage, V	230	230	230
Water supply	mains	mains	mains
Production capacity, kg/day	20	50	85
Ice bin capacity, kg	5	10	25
Cooling system	air	air	air
External dimensions, mm	330x470x605	400x543x700	400x510x845
Net weight, kg	27	36,4	45

FOOD PROCESSING EQUIPMENT

Slicers
Bone Saws
Meat Mincers
Tenderizers
Meat Mixers
Burger Presses
Sausage Fillers
Bread Slicers
Dough Dividers
Dough Sheeters
Spiral Mixers
Planetary Mixers
Horizontal Mixers
Immersion Blenders
Potato Peelers
Spice Mills
Cutters
Vegetable Cutters

Slicers



Model	HKN-HM220	HKN-HM250	HKN-HM300	HKN-GSP300 AUTO
Power, kW	0,12	0,15	0,25	0,85
Voltage, V	230	230	230	230
Blade diameter, mm	220	250	300	300
External dimensions, mm	420x380x340	470x400x370	560x460x430	520x450x660
Net weight, kg	12,8	15,5	23,4	46

Bone Saws



Model	HKN-SE/2020	HKN-SE/1650	HKN-SE1650M
Power, kW	1,5	0,75	0,75
Voltage, V	400	230	230
Blade length, mm	2020	1650	1650
Max cut height, mm	280	220	270
Blade speed, m/s	-	-	15
Plate size, mm	480x600	400x435	445x465
External dimensions, mm	560x600x1525	530x515x955	470x480x850
Net weight, kg	116	36,3	35

Model	HKN-SE/2580 INOX	HKN-SE/3370 INOX
Power, kW	1,5	2,2
Voltage, V	230	230
Blade length, mm	2580	3370
Max cut height, mm	440	565
Blade speed, m/s	22	34
Plate size, mm	800x570	445x465
External dimensions, mm	820x770x1700	900x960x1935
Net weight, kg	130	178



**Meat
Mincers**



⊕ Funnel 20mm

Model	HKN-12S	HKN-12SCE	HKN-22S	HKN-22SP
Power, kW	0,75	0,85	1,1	0,85
Voltage, V	230	230	230	230
Production capacity, kg/h	200	160	220	250
External dimensions, mm	460x260x440	380x215x410	520x220x445	410x240x450
Body	aluminum	stainless steel	aluminum	painted steel
Meat mincer part	stainless steel	chromed metal	stainless steel	stainless steel
Cutting system	enterprise	enterprise	unger	enterprise
Net weight, kg	20,4	18	23,2	27



**Spare
Funnels**



Model	HKN-12CR	HKN-12N
Power, kW	0,75	0,75
Voltage, V	230	230
Production capacity, kg/h	160	160
External dimensions, mm	390x225x415	390x225x415
Body	painted steel	aluminum
Meat mincer part	chromed metal	stainless steel
Cutting system	enterprise	enterprise
Net weight, kg	25	25

Model	HKN-12CR	HKN-22SP
Supported models	HKN-12CR	HKN-22SP



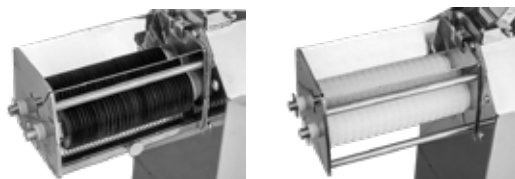
Model	HKN-12SC	HKN-22SC	HKN-12SS	HKN-22SS
Power, kW	0,8	1,1	0,75	1,1
Voltage, V	230	230	230	230
Production capacity, kg/h	160	220	160	220
External dimensions, mm	400x190x410	410x240x450	390x190x410	410x240x450
Body	stainless steel	stainless steel	stainless steel	stainless steel
Meat mincer part	chromed metal	chromed metal	stainless steel	stainless steel
Cutting system	enterprise	enterprise	enterprise	enterprise
Net weight, kg	18,6	25	24,5	23,7

Tenderizers



Model	HKN-PK	HKN-PKT	HKN-PKM
Power, kW	0,35	0,45	-
Voltage, V	230	230	-
Rotation speed, rpm	75	120	manual
External dimensions, mm	480x250x480	430x170x420	386x320x440
Net weight, kg	25	19	5,8

Tenderizer Spare Rollers



Model	HKN-MSA	HKN-TDB
-------	---------	---------

Meat Mixers



Model	HKN-MM50A	HKN-MM70A	HKN-MM90A
Capacity, l	50	70	90
Maximum load, kg	35	50	70
Power, kW	0,75	1,1	1,5
Voltage, V	230	230	230
External dimensions, mm	720x510x1050	820x510x1050	860x510x1050
Net weight, kg	136	152	178

**Manual Sausage
Fillers**



⊕ Funnels included

Model	HKN-ISV2	HKN-ISV3	HKN-ISV5	HKN-ISV7
Capacity, l	2	3	5	7
External dimensions, mm	280x238x500	290x230x500	290x230x620	290x230x770
Net weight, kg	6	11	12	13



⊕ Funnels included

Model	HKN-ISV10	HKN-ISV15
Capacity, l	10	15
External dimensions, mm	360x250x650	360x250x780
Net weight, kg	20,25	22

**Spare
Funnels**



Model	HKN-ISV
Diameter, cm	3,8/2,5/1,9/1,5



⊕ Funnels included

Model	HKN-ISH3	HKN-ISH5	HKN-ISH7
Capacity, l	3	5	7
External dimensions, mm	380x183x160	500x183x160	640x183x160
Net weight, kg	9	10,5	12

**Manual Sausage
Clippers**

Model	HKN-MS1
External dimensions, mm	430x230x670
Net weight, kg	10,5



Sausage Fillers



⊕ Funnels included

Model	HKN-ISE10	HKN-ISE15	HKN-ISE30
Power, kW	0,12	0,12	0,25
Voltage, V	230	230	230
Capacity, l	10	15	30
External dimensions, mm	415x315x700	415x315x810	475x345x1052
Net weight, kg	32,5	34,5	54

⊕ Funnels included

Model	HKN-ISA15	HKN-ISA26	HKN-ISA35
Power, kW	0,75	1,1	1,1
Voltage, V	230	230	230
Capacity, l	15	26	35
External dimensions, mm	400x600x1240	485x640x1240	560x735x1240
Net weight, kg	120	140	180
Production capacity, kg/h	300	400	600



Burger Presses



⊕ Paper disks included

Model	HKN-F10	HKN-F13	HKN-F15
Cylinder diameter, mm	100	130	150
External dimensions, mm	235x230x275	235x230x275	245x210x280
Net weight, kg	5	5,2	6,3

Spare Paper Disks



Model	HKN-P100	HKN-P130	HKN-P150
Quantity, pcs	100	100	100
Diameter, mm	100	130	150

Bread Slicers



⊕ Pusher included

Model	HKN-PIC012	HKN-PIC012M	HKN-PIC012M2
Power, kW	0,25	0,37	0,37
Voltage, V	230	230	230
Maximum loaf length, mm	380	375	375
Production capacity, loaves/h	180	240	240
Slice thickness, mm	12	12	12
External dimensions, mm	650x660x760	745x510x710	745x510x710
Net weight, kg	64	62	62

Dough Dividers



Model	HKN-SPA36
Power, kW	0,75
Voltage, V	230
Dough piece weight, g	30-180
Number of portions	36
Loading capacity, kg	1,08-6,48
External dimensions, mm	520x410x1300
Net weight, kg	165

Dough Sheeters



Model	HKN-DSH300	HKN-DSH350	HKN-DSH500
Power, kW	1,5	1,5	2,2
Voltage, V	230	230	400
Dough thickness, mm	0...25	0...25	0...25
Hopper width, mm	300	350	500
Rotation speed, rpm	75	75	75
External dimensions, mm	690x530x1070	690x580x1070	690x730x1070
Net weight, kg	113	119	139

Spiral Mixers



Removable bowl

Model	HKN-10CN	HKN-20CN	HKN-20CN2V	HKN-30CN
Speed settings	1	1	2	1
Power, kW	1,1	1,5	0,85	2
Voltage, V	230	230	400	230
Capacity, l	10	20	20	30
Maximum load, kg	5	8	8	12
Bowl rotation speed, rpm	18	18	12/18	18
Utensil rotation speed, rpm	156	156	100/156	156
External dimensions, mm	460x700x880	500x760x980	500x760x980	520x865x1050
Net weight, kg	108	125	136	151

Model	HKN-30CN2V	HKN-40CN	HKN-40CN2V
Speed settings	2	1	2
Power, kW	1,8	2,2	2,2
Voltage, V	400	230	400
Capacity, l	30	40	40
Maximum load, kg	12	15	15
Bowl rotation speed, rpm	12/18	18	12/18
Utensil rotation speed, rpm	100/156	156	100/156
External dimensions, mm	520x865x1050	520x930x1050	520x930x1050
Net weight, kg	151	175	175

Spiral Mixer Bowls



Model	HKN-10CN-BOWL	HKN-20CN-BOWL	HKN-30CN-BOWL	HKN-40CN-BOWL
Supported models	HKN-10CN	HKN-20CN / HKN-20CN2V	HKN-30CN / HKN-30CN2V	HKN-40CN / HKN-40CN2V
Capacity, l	10	20	30	40
External dimensions, mm	320x320x213	383x383x245	438x438x309	480x480x310

Spiral Mixers



Fixed bowl

Model	HKN-20SN	HKN-20SN2V	HKN-30SN	HKN-30SN2V
Speed settings	1	2	1	2
Power, kW	1,1	1,1	1,5	1,5
Voltage, V	230	230	230	400
Capacity, l	20	20	30	30
Maximum flour/dough load, kg	8/12	8/12	12/18	12/18
Bowl rotation speed, rpm	20	20/10	20	20/10
Utensil rotation speed, rpm	207	110/180	207	125/250
External dimensions, mm	410x675x850	410x675x850	445x730x860	445x730x860
Net weight, kg	95	100	102	107

Model	HKN-40SN	HKN-40SN2V	HKN-50SN	HKN-50SN2V
Speed settings	1	2	1	2
Power, kW	2,2	2,4	2,2	2,4
Voltage, V	230	400	230	400
Capacity, l	40	40	50	50
Maximum flour/dough load, kg	16/24	16/24	20/30	20/30
Bowl rotation speed, rpm	24	24/12	30	30/15
Utensil rotation speed, rpm	250	125/250	240	120/240
External dimensions, mm	490x790x1050	490x790x1035	526x876x1120	526x876x1120
Net weight, kg	131	136	136	141



Model	HKN-8SN	HKN-10SN	HKN-80SN2V
Speed settings	1	1	2
Power, kW	0,45	0,65	2,4
Voltage, V	230	230	400
Capacity, l	8	10	80
Maximum flour/dough load, kg	3/4,5	4/6	30/45
Bowl rotation speed, rpm	21	15	30/15
Utensil rotation speed, rpm	159	106	120/240
External dimensions, mm	302x495x385	315x600x630	650x1020x1135
Net weight, kg	36	58	304



Spiral Mixers



Fixed bowl

Model	HKN-M20SN	HKN-M20SN2V	HKN-M30SN	HKN-M30SN2V
Speed settings	1	2	1	2
Power, kW	1,5	1,5	1,5	1,5
Voltage, V	230	230	230	230
Capacity, l	21	21	35	35
Maximum flour/dough load, kg	8/10	8/10	13	13
Bowl rotation speed, rpm	17	15/20	17	15/20
Utensil rotation speed, rpm	170	150/200	170	150/200
External dimensions, mm	390x730x900	390x730x900	435x750x900	435x750x900
Net weight, kg	90	90	100	100

Model	HKN-M40SN	HKN-M40SN2V	HKN-M50SN	HKN-M50SN2V
Speed settings	1	2	1	2
Power, kW	3	3	3	3
Voltage, V	230	230	230	230
Capacity, l	40	40	54	54
Maximum flour/dough load, kg	16/24	16/24	20/30	20/30
Bowl rotation speed, rpm	17	15/20	17	15/20
Utensil rotation speed, rpm	170	150/200	170	150/200
External dimensions, mm	480x840x1000	480x840x1000	520x880x1000	520x880x1000
Net weight, kg	155	155	170	170



Model	HKN-E40SN2V
Speed settings	2
Power, kW	2,2
Voltage, V	400
Capacity, l	40
Maximum flour/dough load, kg	16/24
Bowl rotation speed, rpm	13/26
Utensil rotation speed, rpm	130/260
External dimensions, mm	490x765x904
Net weight, kg	120

Planetary Mixers



⊕ 3 utensils included

Model	HKN-IP10FM	HKN-IP15FM
Power, kW	0,37	0,37
Voltage, V	230	230
Capacity, l	9,8	13,1
Utensil rotation speed, rpm	90/160/300	90/160/300
Maximum load, kg	1	1,5
External dimensions, mm	444x360x650	444x360x650
Net weight, kg	53	58



Model	HKN-IP20FM	HKN-IP30FM	HKN-IP40FM	HKN-IP50FM	HKN-IP60FM
Power, kW	1,1	1,5	2	2	2,2
Voltage, V	230	230	400	400	400
Capacity, l	19	28	35	50	67,8
Utensil rotation speed, rpm	105/180/425	110/200/420	65/102/296	65/102/296	82/163/318
Maximum load, kg	3	3-6	4-9	5-10	6-12
External dimensions, mm	513x405x762	450x430x880	630x580x1050	780x680x1260	820x700x1260
Net weight, kg	76	80	142	186	221

Planetary Mixer Bowls



Model	Capacity, l
HKN-IP10FM	10
HKN-IP15FM	15
HKN-IP20FM	20
HKN-IP30FM	30
HKN-IP40FM	40
HKN-IP50FM	50
HKN-IP60FM	60

Planetary Mixer Cart



Model	HKN-IP50FM-CART	HKN-IP60FM-CART
Supported models	HKN-IP50FM	HKN-IP60FM

Planetary Mixers



⊕ 3 utensils included



⊕ 3 utensils included

Model	HKN-IP10F	HKN-IP20F	HKN-IP30F2	HKN-IP40F
Power, kW	0,45	1,1	1,1	1,5
Voltage, V	230	230	230	400
Capacity, l	10	20	30	40
Utensil rotation speed, rpm	110/178/355	104/187/365	104/187/365	80/160/310
Maximum load, kg	2	5	6	6-8
External dimensions, mm	432x452x606	496x530x780	546x512x882	620x630x1011
Net weight, kg	53	80	77	125



⊕ 3 utensils included

Model	HKN-KS5	HKN-KS7	HKN-KS10
Power, kW	0,5	0,5	0,5
Voltage, V	230	230	230
Capacity, l	5	7	10
Utensil rotation speed, rpm	0...1000	0...1000	0...1000
External dimensions, mm	380x235x375	380x235x405	380x235x445
Net weight, kg	13	14,5	15



Horizontal Mixers



Model	HKN-15HN	HKN-25HN
Power, kW	1,1	1,5
Voltage, V	230	230
Capacity, l	33	50
Maximum load, kg	15	25
Rotation speed, rpm	40	40
External dimensions, mm	720x540x725	820x605x735
Net weight, kg	68	75

Potato Peelers



Model	HKN-PPF10M	HKN-PPF15M	HKN-PPF15
Power, kW	0,55	0,75	0,75
Voltage, V	230	230	230
Capacity, kg	10	15	15
Production capacity, kg/h	100	150	300
External dimensions, mm	685x410x960	715x440x1030	600x440x1075
Net weight, kg	50	62	47

Immersion Blenders



Model	HKN-MP160	HKN-MPX160	HKN-MP160 COMBI	HKN-MPX160 COMBI
Power, kW	0,22	0,27	0,22	0,27
Voltage, V	230	230	230	230
Utensil rotation speed, rpm	2500...15000	6000...20000	2500...15000	6000...20000
Shaft length, mm	160	160	160	160
Whisk length, mm	-	-	185	185
Net weight, kg	1,6	1,75	2,4	2,2

Spice Mills



Model	HKN-SG100	HKN-SG200	HKN-SG400
Power, kW	0,65	1,2	1,8
Voltage, V	230	230	230
Capacity, g	100	200	400
Rotation speed, rpm	28 000	28 000	28 000
External dimensions, mm	165x140x335	178x162x360	198x192x362
Net weight, kg	2,6	3,6	5,6

Cutters



Model	HKN-CL6	HKN-CL9	HKN-CL12M	HKN-CL13M
Power, kW	1,8	1,8	1,5	2,2
Voltage, V	230	230	230	230
Rotation speed, rpm	1100-2800	1100-2800	1000-2200	1400
Capacity, l	6	9	12	13
External dimensions, mm	525x300x430	530x320x450	520x380x400	420x415x820
Net weight, kg	18,8	19,9	22	55

Vegetable Cutters



Model	HKN-FNT
Power, kW	0,55
Voltage, V	230
Production capacity, kg/h	100...300
External dimensions, mm	240x448x500
Net weight, kg	21,4

Spare Discs



Model	Type
HKN-DB10	cube 10x10x10 mm
HKN-DB8	cube 8x8x8 mm
HKN-P2	slice 2 mm
HKN-P4	slice 4 mm
HKN-FB8	French Fry 8x8 mm
HKN-H3	grater 3 mm
HKN-H4	grater 4 mm
HKN-H7	grater 5 mm

Tomato Cutters



Model	HKN-TC3
External dimensions, mm	450x150x180
Net weight, kg	3,4
Cut width, mm	4,8
Blades	13

PACKAGING EQUIPMENT

HURAKAN

Vacuum Packaging
Sealers
Tray Sealers



Vacuum Packaging



Model	HKN-VAC260	HKN-VAC400
Power, kW	0,37	0,9
Voltage, V	230	230
Vacuum pump capacity, m ³ /h	14,4	20
Sealing beam size, mm	260x5	390x10
Chamber dimensions, mm	285x389x50	400x420x65
External dimensions, mm	330x502x380	540x490x500
Net weight, kg	37,2	62,5

Vacuum Packers



Bag rolls included

Model	HKN-V300	HKN-V333	HKN-V335	HKN-V335 BLACK
Power, kW	0,07	0,12	0,12	0,12
Voltage, V	230	230	230	230
Cycle, sec	10...20	6...10	6...10	6...10
Sealing beam length, mm	300	300	300	300
External dimensions, mm	375x100x55	408x201x87	420x220x90	420x220x90
Net weight, kg	1,1	2	2,9	2,9

Sealers



Model	HKN-CNT200	HKN-CNT300	HKN-CNT400
Power, kW	0,31	0,4	0,6
Voltage, V	230	230	230
Cycle, sec	1...8	1...8	1...8
Sealing beam size, mm	200x2	300x2	400x2
Max bag thickness, mm	0,02...0,8	0,02...0,8	0,02...0,8
External dimensions, mm	255x75x160	340x75x160	530x90x160
Net weight, kg	1,8	2,7	3,2

Tray Sealer



Model	HKN-CNW460 PRO
Power, kW	0,27
Voltage, V	230
Sealing beam length, mm	450
Temperature, °C	55...140
External dimensions, mm	650x465x150
Net weight, kg	7

Bag Rolls



Model	Roll, cm
HKN-VR2015	20x1500
HKN-VR2815	28x1500

HYGIENE EQUIPMENT

HURAKAN

Insect Killers

Sterilizers

Food Waste Disposers



Insect Killers



Model	HKN-MID50	HKN-MID80	HKN-MID150	HKN-MID180
Power, kW	0,02	0,03	0,04	0,06
Voltage, V	230	230	230	230
Effective coverage, m ²	50	80	150	180
External dimensions, mm	360x100x290	410x100x310	670x100x320	670x100x320
Net weight, kg	2,08	2,48	3,05	3,65

Sterilizers



Model	HKN-UVA10	HKN-UVA12
Power, kW	0,06	0,01
Voltage, V	230	230
Sterilization time, min	20-60	20-60
Utensils capacity	10	12
External dimensions, mm	420x210x590	500x150x615
Net weight, kg	6	5,7

Food Waste Disposers



Model	HKN-FWD370A	HKN-FWD370B	HKN-FWD450A
Power, kW	0,37	0,37	0,45
Voltage, V	230	230	230
Rotation speed, rpm	4200	4200	4200
External dimensions, mm	235x235x405	235x235x405	235x235x405
Net weight, kg	4,3	4,3	5

GASTRONORMS & TRAYS

Gastronorms



Model	Depth, mm	Capacity, l	External dimensions, mm
GN 1/3-20	20	0,75	325x176
GN 1/3-40	40	1,5	325x176
GN 1/3-65	65	2,5	325x176
GN 1/3-100	100	4	325x176
GN 1/3-150	150	5,7	325x176
GN 1/3-200	200	7,8	325x176
GN 1/2-20	20	1,25	325x265
GN 1/2-40	40	2	325x265
GN 1/2-65	65	4	325x265

Model	Depth, mm	Capacity, l	External dimensions, mm
GN 1/2-100	100	6,5	325x265
GN 1/2-150	150	9,5	325x265
GN 1/2-200	200	12,5	325x265
GN 1/1-20	20	2,5	530x325
GN 1/1-40	40	5	530x325
GN 1/1-65	65	9	530x325
GN 1/1-100	100	14	530x325
GN 1/1-150	150	21	530x325
GN 1/1-200	200	28	530x325



Model	Depth, mm	Capacity, l	External dimensions, mm
GN 2/3-20	20	1,5	354x325
GN 2/3-40	40	3	354x325
GN 2/3-65	65	5,5	354x325
GN 2/3-100	100	9	354x325
GN 2/3-150	150	13	354x325
GN 2/3-200	200	18	354x325
GN 1/9-65	65	0,6	176x108
GN 1/9-100	100	1	176x108
GN 1/6-65	65	1	176x162
GN 1/6-100	100	1,6	176x162
GN 1/6-150	150	2,2	176x162

Model	Depth, mm	Capacity, l	External dimensions, mm
GN 1/6-200	200	2,8	176x162
GN 1/4-20	20	0,5	265x162
GN 1/4-40	40	1,2	265x162
GN 1/4-65	65	1,8	265x162
GN 1/4-100	100	2,8	265x162
GN 1/4-150	150	4	265x162
GN 1/4-200	200	5,5	265x162
GN 2/1-20	20	5	650x530
GN 2/1-40	40	10	650x530
GN 2/1-65	65	18,5	650x530
GN 2/1-100	100	28,5	650x530
GN 2/1-200	200	57,5	650x530



Model	Depth, mm	Capacity, l	External dimensions, mm
GN-P 1/2-40	40	2	325x265
GN-P 1/2-65	65	4	325x265
GN-P 1/2-100	100	6,5	325x265
GN-P 2/3-40	40	3	354x325
GN-P 2/3-65	65	5,5	354x325
GN-P 2/3-100	100	9	354x325
GN-P 1/1-20	20	2,5	530x325

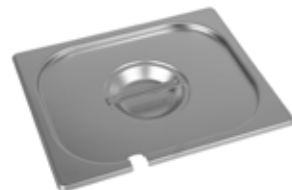
Model	Depth, mm	Capacity, l	External dimensions, mm
GN-P 1/1-40	40	5	530x325
GN-P 1/1-65	65	9	530x325
GN-P 1/1-100	100	14	530x325
GN-P 1/1-150	150	21	530x325
GN-P 1/1-200	200	28	530x325
GN-P 2/1-65	65	18,5	650x530
GN-P 2/1-100	100	28,5	650x530

Gastronorms



Model	Depth, mm	Capacity, l	External dimensions, mm
GN-H 1/3-20	20	0,75	325x176
GN-H 1/3-40	40	1,5	325x176
GN-H 1/3-65	65	2,5	325x176
GN-H 1/3-100	100	4	325x176
GN-H 1/3-150	150	5,7	325x176
GN-H 1/3-200	200	7,8	325x176
GN-H 1/2-20	20	1,25	325x265
GN-H 1/2-40	40	2	325x265
GN-H 1/2-65	65	4	325x265

Model	Depth, mm	Capacity, l	External dimensions, mm
GN-H 1/2-100	100	6,5	325x265
GN-H 1/2-150	150	9,5	325x265
GN-H 1/2-200	200	12,5	325x265
GN-PH 1/2-200	200	12,5	325x265
GN-H 1/1-20	20	2,5	530x325
GN-H 1/1-40	40	5	530x325
GN-H 1/1-65	65	9	530x325
GN-H 1/1-100	100	14	530x325
GN-H 1/1-150	150	21	530x325
GN-H 1/1-200	200	28	530x325



With utensil slot

Model	External dimensions, mm
GD 2/3	354x325
GD 1/9	176x108
GD 1/6	176x162
GD 1/4	265x162
GD 1/3	325x176
GD 1/2	325x265
GD 1/1	530x325

Model	External dimensions, mm
GD-P 2/3 C	354x325
GD-P 1/9 C	176x108
GD-P 1/6 C	176x162
GD-P 1/4 C	265x162
GD-P 1/3 C	325x176
GD-P 1/2 C	325x265
GD-P 1/1 C	530x325



For GN-H gastronorms

Model	External dimensions, mm
GD-H 1/3	325x176
GD-H 1/2	325x265
GD-H 1/1	530x325

Contents

62

Cooking Equipment

94

Refrigeration Equipment

98

Washing Equipment

106

Bar & Coffee Equipment

112

Food Processing Equipment

120

Packaging Equipment

122

Gastronorms & Trays

COOKING EQUIPMENT

Combi Steamers
Convection Ovens
Deck Ovens
Provers
Modular Cooking
Pizza Ovens
Sous Vide Cookers

Selfclean included in APxxT, APxxQT, APxxQD and APxxQND models

Electric Combi Steamers



Model	AP20T	AP10T	AP7T	AP5T
Trays load capacity	20	10	7	5
Supported trays	GN 1/1	GN 1/1	GN 1/1	GN 1/1
Grid spacing, mm	70	75	75	75
Trays included	-	4	3	2
Fan speeds	10	10	10	10
Voltage, V	400	400	400	400
Power, kW	28,5	16,1	10,8	9
External dimensions, mm	1050x940x1900	790x942x1276	792x942x940	792x942x781
Net weight, kg	290	140	107	92



Model	AP20QT	AP10QT	AP7QT	AP5QT
Trays load capacity	20	10	7	5
Supported trays	GN 1/1 + 600x400	GN 1/1 + 600x400	GN 1/1 + 600x400	GN 1/1 + 600x400
Grid spacing, mm	70	80	70	70
Trays included	-	4	3	2
Fan speeds	2	2	2	2
Voltage, V	400	400	400	400
Power, kW	28,6	15,7	12,4	10,5
External dimensions, mm	1003x1050x1887	937x827x1211	937x821x875	937x821x715
Net weight, kg	290	145	101	83

**Electric
Combi
Steamers**



Model	AP20QD	AP10QNDC	AP7QNDC
Trays load capacity	20	10	7
Supported trays	GN 1/1	GN 1/1 + 600x400	GN 1/1 + 600x400
Grid spacing, mm	70	80	70
Trays included	-	4	3
Fan speeds	2	5	5
Voltage, V	400	400	400
Power, kW	28,5	15,7	12,4
External dimensions, mm	1090x940x1900	937x827x1211	937x821x875
Net weight, kg	310	137	103



Selfclean not included

Model	AP5QNDC	AP5.23QD
Trays load capacity	5	5
Supported trays	GN 1/1 + 600x400	GN 2/3
Grid spacing, mm	70	70
Trays included	2	2
Fan speeds	5	2
Voltage, V	230/400	230/400
Power, kW	10,5	5,4
External dimensions, mm	937x821x715	700x715x630
Net weight, kg	90	55



Model	AP20QM	AP10QM	AP7QM
Trays load capacity	20	10	7
Supported trays	GN 1/1	GN 1/1 + 600x400	GN 1/1 + 600x400
Grid spacing, mm	70	80	70
Trays included	-	4	3
Fan speeds	2	2	2
Voltage, V	400	400	400
Power, kW	28,5	15,7	12,4
External dimensions, mm	1090x940x1900	937x827x1211	937x821x875
Net weight, kg	310	133	99



Model	AP5QM	AP5.23QM
Trays load capacity	5	5
Supported trays	GN 1/1 + 600x400	GN 2/3
Grid spacing, mm	70	70
Trays included	2	2
Fan speeds	2	2
Voltage, V	400	400
Power, kW	10,5	5,4
External dimensions, mm	937x821x715	700x715x630
Net weight, kg	85	55

Gas Combi Steamers



Model	AP10QNDCG	AP7QNDCG	AP5QNDCG
Trays load capacity	10	7	5
Supported trays	GN 1/1 + 600x400	GN 1/1 + 600x400	GN 1/1 + 600x400
Grid spacing, mm	80	70	70
Fan speeds	2	2	2
Trays included	4	3	2
Gas power, kW	20	15	12
Voltage, V	230	230	230
External dimensions, mm	939x868x1321	939x868x985	939x868x861
Net weight, kg	137	103	90



Model	AP10QMG	AP7QMG	AP5QMG
Trays load capacity	10	7	5
Supported trays	GN 1/1 + 600x400	GN 1/1 + 600x400	GN 1/1 + 600x400
Grid spacing, mm	80	70	70
Fan speeds	2	2	2
Trays included	4	3	2
Gas power, kW	20	15	12
Voltage, V	230	230	230
External dimensions, mm	939x868x1321	939x868x985	939x868x861
Net weight, kg	137	103	90

**Electric Compact
Combi Steamers**



* Selfclean included in APxxNDC models

Model	AP10NDC COMPACT	AP6NDC COMPACT	AP6.23NDC COMPACT
Supported trays	GN 1/1	GN 1/1	GN 2/3
Trays load capacity	10 GN 1/1-40 or 6 GN 1/1-65	6 GN 1/1-40 or 4 GN 1/1-65	6 GN 2/3-40 or 4 GN 2/3-65
Fan speeds	5	5	5
Voltage, V	400	230/400	230/400
Power, kW	14	7	5,3
External dimensions, mm	530x896x939	530x896x755	530x721x755
Net weight, kg	115	93	80



Model	AP10M COMPACT	AP6M COMPACT	AP6.23M COMPACT
Supported trays	GN 1/1	GN 1/1	GN 2/3
Trays load capacity	10 GN 1/1-40 or 6 GN 1/1-65	6 GN 1/1-40 or 4 GN 1/1-65	6 GN 2/3-40 or 4 GN 2/3-65
Fan speeds	1	1	1
Voltage, V	400	230/400	230/400
Power, kW	14	7	5,3
External dimensions, mm	530x896x939	530x896x755	530x721x755
Net weight, kg	115	93	80

**Electric
Convection
Ovens**



Model	AD46D	AD46DI ECO	AD46M
Trays load capacity	4	4	4
Supported trays	600x400 + GN 1/1	600x400 + GN 1/1	600x400 + GN 1/1
Grid spacing, mm	80	75	80
Fan speeds	1	1	1
Trays included	2	2	2
Steam function	*	*	*
Bi-directional fan	*	*	*
Voltage, V	400	400/230	400/230
Power, kW	6,7	6,3	6,7
External dimensions, mm	800x700x580	750x695x560	800x700x580
Net weight, kg	54	45	53

Electric Convection Ovens



Model	AD46M ECO	AD46MI ECO	AD46MP ECO
Trays load capacity	4	4	4
Supported trays	600x400 + GN 1/1	600x400 + GN 1/1	600x400 + GN 1/1
Grid spacing, mm	75	75	75
Fan speeds	1	1	1
Trays included	2	2	2
Steam function	*	*	*
Bi-directional fan	-	*	-
Voltage, V	230	400/230	400/230
Power, kW	3,4	6,7	6,2
External dimensions, mm	750x650x560	750x695x560	750x650x560
Net weight, kg	39	45	39



Model	AD44D	AD44M	AD44MH ECO
Trays load capacity	4	4	4
Supported trays	470x340	470x340	450x340
Grid spacing, mm	80	80	75
Fan speeds	1	1	1
Trays included	4	4	4
Steam function	*	*	*
Bi-directional fan	*	*	-
Voltage, V	230	230	230
Power, kW	3,3	3,3	3,2
External dimensions, mm	600x660x580	600x660x580	560x590x530
Net weight, kg	36	36	31



Model	AD44M ECO	AD44ME ECO
Trays load capacity	4	4
Supported trays	450x340	450x340
Grid spacing, mm	75	75
Fan speeds	1	1
Trays included	4	4
Steam function	-	-
Bi-directional fan	-	-
Voltage, V	230	230
Power, kW	3,1	3,1
External dimensions, mm	560x590x530	560x590x530
Net weight, kg	31	31

Selfclean included in ABxxT, ABxxQT, ABxxQD and ABxxQNDC models

**Electric
Convection
Ovens**



Model	AB16T	AB10T	AB6T	AB4T
Trays capacity	16	10	6	4
Supported trays	600x400	600x400	600x400	600x400
Grid spacing, mm	80	80	80	80
Fan speeds	10	10	10	10
Trays included	-	4	3	2
Voltage, V	400	400	400	400
Power, kW	28,5	16,1	10,8	9
External dimensions, mm	1050x940x1900	792x942x1276	792x942x940	792x942x781
Net weight, kg	290	140	107	92



Model	AB16QT	AB10QT	AB6QT	AB4QT
Trays capacity	16	10	6	4
Supported trays	600x400	600x400	600x400	600x400
Grid spacing, mm	80	80	80	80
Fan speeds	2	2	2	2
Trays included	-	4	3	2
Voltage, V	400	400	400	400
Power, kW	28,5	15,7	12,4	10,5
External dimensions, mm	1050x940x1900	937x827x1211	937x821x875	937x821x715
Net weight, kg	290	135	101	87



Model	AB16QD	AB10QNDC	AB6QNDC	AB4QNDC
Trays capacity	16	10	6	4
Supported trays	600x400	600x400	600x400	600x400
Grid spacing, mm	80	80	80	80
Fan speeds	2	5	5	5
Trays included	-	4	3	2
Voltage, V	400	400	230/400	230/400
Power, kW	28,5	15,7	12,4	10,5
External dimensions, mm	1050x940x1900	937x827x1211	937x821x875	937x821x715
Net weight, kg	290	137	103	90



Model	AB16QM	AB10QM	AB6QM	AB4QM
Trays capacity	16	10	6	4
Supported trays	600x400	600x400	600x400	600x400
Grid spacing, mm	80	80	80	80
Fan speeds	-	4	3	2
Trays included	2	2	2	2
Voltage, V	400	400	400	400
Power, kW	28,5	15,7	12,4	10,5
External dimensions, mm	1050x940x1900	937x827x1211	937x821x875	937x821x715
Net weight, kg	290	133	99	85

Gas Convection Ovens



Model	AB10QND CG	AB6QND CG	AB4QND CG
Trays capacity	10	6	4
Supported trays	600x400	600x400	600x400
Grid spacing, mm	80	80	80
Trays included	4	3	2
Fan speeds	2	2	2
Gas power, kW	20	15	12
Voltage, V	230	230	230
External dimensions, mm	939x868x1321	939x868x985	939x868x861
Net weight, kg	137	103	90



Model	AB10QMG	AB6QMG	AB4QMG
Trays capacity	10	6	4
Supported trays	600x400	600x400	600x400
Grid spacing, mm	80	80	80
Trays included	4	3	2
Fan speeds	2	2	2
Gas power, kW	20	15	12
Voltage, V	230	230	230
External dimensions, mm	939x868x1321	939x868x985	939x868x861
Net weight, kg	137	103	90

Vertex Convection Ovens



Model	AV03D	AV04D	AV043D
Trays capacity	3	4	4
Supported trays	GN 1/1 + 600x400	GN 1/1 + 600x400	460x340
Grid spacing, mm	80	80	80
Fan speeds	5	5	5
Voltage, V	230	230/400	230
Power, kW	3,1	6,3	3,1
External dimensions, mm	800x770x460	800x770x540	600x795x540
Net weight, kg	65	70	55

Deck Ovens



Model	AB01Q DECK	AB02Q DECK
Chambers	1	2
Supported trays	600x400	600x400
Fan speeds	-	-
Voltage, V	230	400
Power, kW	3,56	6,3
External dimensions, mm	938x833x404	938x1243x404
Net weight, kg	68	100

Provers



Model	APE8ADS APE8ADS A APE8ADS D	APE8AD APE8AD A APE8AD D	APE8ABQ APE8ABQ A APE8ABQ D
Trays load capacity	8	8	8
Supported trays	450/470x340 GN 2/3	600x400 GN 1/1	600x400 GN 1/1
Grid spacing, mm	75	75	75
Temperature, °C	0...60	0...60	0...60
Voltage, V	230	230	230
Power, kW	1,2	2,4	2,4
External dimensions, mm	600x678x866	800x678x866	935x803x867
Net weight, kg	28	36	48

Provers



Model	APE12ABQ APE12ABQ A APE12ABQ D	APE12ABT A APE12ABT D
Trays load	12	12
Supported trays	600x400 GN 1/1	600x400 GN 1/1
Grid spacing, mm	75	75
Temperature, °C	0...60	0...60
Voltage, V	230	230
Power, kW	2,4	2,4
External dimensions, mm	935x893x706	792x893x706
Net weight, kg	48	48

A* - water connection with a valve

D* - digital control panel with water connection





Electric Square Plates



Model	APRE-47P/PL	APRE-77P/PL	APRE-77FE/PL	APRE-117P/PL	APRE-117FE/PL
Hotplates	2	4	4	6	6
Open stand	*	*	-	*	-
Neutral cabinet	-	-	-	-	*
Electric oven	-	-	*	-	*
Hotplates power, kW	2x2,6	4x2,6	4x2,6	6x2,6	6x2,6
Oven electric power, kW	-	-	5,3	-	5,3
Voltage, V	400	400	400	400	400
Total power, kW	5,2	10,4	15,7	15,6	20,9
External dimensions, mm	400x700x850	700x700x850	700x700x850	1100x700x850	1100x700x850
Net weight, kg	38	59	89	83	121

Electric Low Plates



Model	APRE-47QP/PL	APRE-77QP/PL	APRE-77QFE/PL	APRE-77QFEK/PL
Hotplates	2	4	4	4
Open stand	*	*	-	-
Electric oven	-	-	*	-
Convection oven	-	-	-	*
Hotplates power, kW	2x2,5	4x2,5	4x2,5	4x2,5
Oven electric power, kW	-	-	5,3	2,6
Voltage, V	400	400	400	400
Total power, kW	5	10	15,3	12,6
External dimensions, mm	400x700x850	700x700x850	700x700x850	700x700x850
Net weight, kg	51	82	115	107



Gas Burners



Model	APRG-47P/PL	APRG-77P/PL	APRG-77FE/PL	APRG-77FG/PL
Burners	2	4	4	4
Open stand	*	*	-	-
Electric oven	-	-	*	-
Gas oven	-	-	-	*
Burners power, kW	2x7	4x7	4x7	4x7
Oven electric power, kW	-	-	5,3	-
Oven gas power, kW	-	-	-	6
Voltage, V	-	-	400	-
Total electric power, kW	-	-	5,3	-
Total gas power, kW	14	28	28	34
External dimensions, mm	400x700x850	700x700x850	700x700x850	700x700x850
Net weight, kg	33	53	81	81



Model	APRG-117P/PL	APRG-117FE/PL	APRG-117FG/PL	APRG-117FGM/PL
Burners	6	6	6	6
Open stand	*	-	-	-
Neutral cabinet	-	*	*	-
Electric oven	-	*	-	-
Gas oven	-	-	*	-
Gas oven Maxi	-	-	-	*
Burners power, kW	6x7	6x7	6x7	6x7
Oven electric power, kW	-	5,3	-	-
Oven gas power, kW	-	-	6	8
Voltage, V	-	400	-	-
Total electric power, kW	-	5,3	-	-
Total gas power, kW	42	42	48	50
External dimensions, mm	1100x700x850	1100x700x850	1100x700x850	1100x700x850
Net weight, kg	74	100	110	122

Electric Solid Tops



Model	APRES-77P/PL	APRES-77FE/PL
Thermal zones	4	4
Open stand	*	-
Static oven	-	*
Thermal zones power, kW	4x2,25	4x2,25
Oven power, kW	-	5,3
Voltage, V	400	400
Total power, kW	9	14,3
External dimensions, mm	700x700x850	700x700x850
Net weight, kg	74	102

Gas Solid Tops



Model	APRGS-77P/PL	APRGS-77FG/PL	APRSTG-117FG/PL
Thermal zones	1	1	4 burners + 1 zone
Open stand	*	-	-
Closed cabinet	-	-	*
Gas oven	-	*	*
Burners power, kW	1x9	1x9	4x7+5,5
Oven power, kW	-	6	8
Total gas power, kW	9	15	39,5
External dimensions, mm	700x700x850	700x700x850	1100x700x850
Net weight, kg	73	101	120

Lava Stone Grills



Model	APGG-47P/PL	APGG-77P/PL
Grids	2	4
Open stand	*	*
Gas power, kW	7,5	15
External dimensions, mm	400x700x850	800x700x850
Net weight, kg	40	72

Water Grills



Model	APGEW-47P/PL	APGEW-87P/PL
Grids included	2	4
Electric power, kW	6	12
Voltage, V	400	400
External dimensions, mm	400x700x850	800x700x850
Net weight, kg	37	80

Induction



Model	APRI-47P/PL	APRI-77P/PL
Induction zones	2	4
Open stand	*	*
Induction zones power, kW	2x3,5	4x3,5
Voltage, V	400	400
Total power, kW	7	14
External dimensions, mm	400x700x850	700x700x850
Net weight, kg	37	68

Tilting Bratt Pans



Model	APSE-87/PL	APSG-87/PL
Capacity, l	50	50
Voltage, V	400	-
Electric power, kW	9	-
Gas power, kW	-	13,5
External dimensions, mm	800x700x850	800x700x850
Net weight, kg	115	110

Boiling Pans



Model	APKE-77/PL	APKG-77/PL
Capacity, l	50	50
Voltage, V	400	-
Electric power, kW	9	-
Gas power, kW	-	12,5
External dimensions, mm	700x700x850	700x700x850
Net weight, kg	83	81

Fry Tops



Model	APTE-47PL/PL	APTE-47PR/PL	APTE-77PL/PL
Smooth plate	*	-	*
Ribbed plate	-	*	-
1/2 smooth, 1/2 ribbed plate	-	-	-
Chromed plate	-	-	-
Hotplate dimensions, mm	350x570	350x570	650x570
Open stand	*	*	*
Voltage, V	400	400	400
Electric power, kW	4	4	8
External dimensions, mm	400x700x850	400x700x850	700x700x850
Net weight, kg	53	53	82



Model	APTE-77PR/PL	APTE-77PLR/PL	APTE-77PLC/PL
Smooth plate	-	-	-
Ribbed plate	*	-	-
1/2 smooth, 1/2 ribbed plate	-	*	-
Chromed plate	-	-	*
Hotplate dimensions, mm	650x570	650x570	650x570
Open stand	*	*	*
Voltage, V	400	400	400
Electric power, kW	8	8	8
External dimensions, mm	700x700x850	700x700x850	700x700x850
Net weight, kg	82	82	82



Model	APTG-47PL/PL	APTG-47PR/PL	APTG-77PL/PL
Smooth plate	*	-	*
Ribbed plate	-	*	-
1/2 smooth, 1/2 ribbed plate	-	-	-
Chromed plate	-	-	-
Hotplate dimensions, mm	350x570	350x570	650x570
Open stand	*	*	*
Gas power, kW	5,5	5,5	11
External dimensions, mm	400x700x850	400x700x850	700x700x850
Net weight, kg	53	53	90

Fry Tops



Model	APTG-77PR/PL	APTG-77PLR/PL	APTG-77PLC/PL
Smooth plate	-	-	-
Ribbed plate	*	-	-
1/2 smooth, 1/2 ribbed plate	-	*	-
Chromed plate	-	-	*
Hotplate dimensions, mm	650x570	650x570	650x570
Open stand	*	*	*
Gas power, kW	11	11	11
External dimensions, mm	700x700x850	700x700x850	700x700x850
Net weight, kg	90	90	90

Fryers



Model	APFE-47/2P/PL	APFE-47P/PL	APFE-77P/PL
Tanks	2	1	2
Capacity, l	7 + 7	13	13 + 13
Closed cabinet	*	*	*
Baskets included	2	1	2
Voltage, V	400	400	400
Electric power, kW	10,5	9	18
Gas power, kW	-	-	-
External dimensions, mm	400x700x850	400x700x850	700x700x850
Net weight, kg	57	46	63



Model	APFG-47/2P/PL	APFG-47P/PL	APFG-77P/PL
Tanks	2	1	2
Capacity, l	7 + 7	14	14 + 14
Closed cabinet	*	*	*
Baskets included	2	1	2
Voltage, V	-	-	-
Electric power, kW	-	-	-
Gas power, kW	12,5	12,5	25
External dimensions, mm	400x700x1180	400x700x1180	700x700x1180
Net weight, kg	51	41	80

Pasta Cookers



Model	APPE-47P/PL	APPE-77P/PL	APPG-47P/PL	APPG-77P/PL
Tanks	1	1	1	1
Capacity, l	26	40	26	40
Closed cabinet	*	*	*	*
Voltage, V	400	400	-	-
Electric power, kW	5,5	9	-	-
Gas power, kW	-	-	8,5	13,6
External dimensions, mm	400x700x850	700x700x850	400x700x850	700x700x850
Net weight, kg	37	48	43	58

Bain-Maries



Model	APBE-47P/PL
Capacity	GN 1/1
Open stand	*
Voltage, V	230
Electric power, kW	1,5
External dimensions, mm	400x700x850
Net weight, kg	41

Neutral Worktops



Model	APN-47P/PL	APN-77P/PL
Open stand	*	*
External dimensions, mm	400x700x850	700x700x850
Net weight, kg	28	41

Electric Square Plates



Model	APRE-49P/PL	APRE-89P/PL	APRE-89FE/PL
Hotplates	2	4	4
Open stand	*	*	-
Electric oven	-	-	*
Hotplates power, kW	2x3	3x3 + 1x4	3x3 + 1x4
Oven power, kW	-	-	6
Voltage, V	400	400	400
Total power, kW	6	13	19
External dimensions, mm	400x900x850	800x900x850	800x900x850
Net weight, kg	54	84	128



Model	APRE-129P/PL	APRE-129FE/PL	APRE-129FEM/PL
Hotplates	6	6	6
Open stand	*	-	-
Neutral cabinet	-	*	-
Electric oven	-	*	-
Electric oven Maxi	-	-	*
Hotplates power, kW	4x3 + 2x4	4x3 + 2x4	4x3 + 2x4
Oven power, kW	-	6	10
Voltage, V	400	400	400
Total power, kW	20	26	30
External dimensions, mm	1200x900x850	1200x900x850	1200x900x850
Net weight, kg	120	172	160

Electric Low Plates



Model	APRE-49QP/PL	APRE-89QP/PL	APRE-89QFE/PL
Hotplates	2	4	4
Open stand	*	*	-
Electric oven	-	-	*
Hotplates power, kW	2x2,5	4x2,5	4x2,5
Oven power, kW	-	-	6
Voltage, V	400	400	400
Total power, kW	5	10	16
External dimensions, mm	400x900x850	800x900x850	800x900x850
Net weight, kg	56	88	132

Gas Burners



Model	APRG-49P/PL	APRG-89P/PL	APRG-89FE/PL	APRG-89FG/PL
Burners	2	4	4	4
Open stand	*	*	-	-
Electric oven	-	-	*	-
Gas oven	-	-	-	*
Burners power, kW	1x7 + 1x11	2x7 + 2x11	2x7 + 2x11	2x7 + 2x11
Oven electric power, kW	-	-	6	-
Oven gas power, kW	-	-	-	7
Voltage, V	-	-	400	-
Total electric power, kW	-	-	6	-
Total gas power, kW	18	36	36	43
External dimensions, mm	400x900x850	800x900x850	800x900x850	800x900x850
Net weight, kg	43	64	96	96



Model	APRG-129P/PL	APRG-129FE/PL	APRG-129FG/PL	APRG-129FMG/PL
Burners	6	6	6	6
Open stand	*	-	-	-
Neutral cabinet	-	*	*	-
Electric oven	-	*	-	-
Gas oven	-	-	*	-
Gas oven Maxi	-	-	-	*
Grill system	-	-	-	*
Burners power, kW	3x7 + 3x11	3x7 + 3x11	3x7 + 3x11	3x7 + 3x11
Oven electric power, kW	-	6	-	-
Oven gas power, kW	-	-	7	10
Grill power, kW	-	-	-	5
Voltage, V	-	400	-	400
Total electric power, kW	-	6	-	5
Total gas power, kW	54	54	61	64
External dimensions, mm	1200x900x850	1200x900x850	1200x900x850	1200x900x850
Net weight, kg	89	128	128	160

Gas Solid Tops



Model	APRGS-89P/PL	APRGS-89FG/PL
Thermal zones	1	1
Open stand	*	-
Gas oven	-	*
Burners power, kW	1x12	1x12
Oven power, kW	-	7
Total gas power, kW	12	19
External dimensions, mm	800x900x850	800x900x850
Net weight, kg	90	115

Induction



Model	APRI-49P/PL	APRI-89P/PL
Induction zones	2	4
Open stand	*	*
Induction zones power, kW	2x5	4x5
Voltage, V	400	400
Total power, kW	10	20
External dimensions, mm	400x900x850	800x900x850
Net weight, kg	58	101

Tilting Bratt Pans



Model	APSE-89/PL	APSE-89K/PL	APSG-89/PL	APSG-89K/PL
Capacity, l	80	80	80	80
Steel tank	-	*	-	*
Stainless steel tank	*	-	*	-
Voltage, V	400	400	230	230
Electric power, kW	12	12	0,02	0,02
Gas power, kW	-	-	20	20
External dimensions, mm	800x900x850	800x900x850	800x900x850	800x900x850
Net weight, kg	150	150	154	154

Fry Tops



Model	APTE-49PL/PL	APTE-49PR/PL	APTE-49PLC/PL
Smooth plate	*	-	-
Ribbed plate	-	*	-
2/3 smooth, 1/3 ribbed plate	-	-	-
Chromed plate	-	-	*
Hotplate dimensions, mm	380x720	380x720	380x720
Open stand	*	*	*
Voltage, V	400	400	400
Electric power, kW	6	6	6
External dimensions, mm	400x900x850	400x900x850	400x900x850
Net weight, kg	76	76	76



Model	APTE-89PL/PL	APTE-89PR/PL	APTE-89PLC/PL	APTE-89PLR/PL
Smooth plate	*	-	-	-
Ribbed plate	-	*	-	-
2/3 smooth, 1/3 ribbed plate	-	-	-	*
Chromed plate	-	-	*	-
Hotplate dimensions, mm	780x720	780x720	780x720	780x720
Open stand	*	*	*	*
Voltage, V	400	400	400	400
Electric power, kW	12	12	12	12
External dimensions, mm	800x900x850	800x900x850	800x900x850	800x900x850
Net weight, kg	128	128	128	128



Model	APTG-49PL/PL	APTG-49PR/PL	APTG-49PLC/PL
Smooth plate	*	-	-
Ribbed plate	-	*	-
2/3 smooth, 1/3 ribbed plate	-	-	-
Chromed plate	-	-	*
Hotplate dimensions, mm	380x720	380x720	380x720
Open stand	*	*	*
Gas power, kW	8	8	8
External dimensions, mm	400x900x850	400x900x850	400x900x850
Net weight, kg	76	76	76

Fry Tops



Model	APTG-89PL/PL	APTG-89PR/PL	APTG-89PLC/PL	APTG-89PLR/PL
Smooth plate	*	-	-	-
Ribbed plate	-	*	-	-
2/3 smooth, 1/3 ribbed plate	-	-	-	*
Chromed plate	-	-	*	-
Hotplate dimensions, mm	780x720	780x720	780x720	780x720
Open stand	*	*	*	*
Gas power, kW	16	16	16	16
External dimensions, mm	800x900x850	800x900x850	800x900x850	800x900x850
Net weight, kg	128	128	128	128

Lava Stone Grills



Model	APGG-49P/PL	APGG-89P/PL
Grids	1	2
Open stand	*	*
Gas power, kW	10	20
External dimensions, mm	400x900x850	800x900x850
Net weight, kg	57	83

Water Grills



Model	APGEW-49P/PL	APGEW-89P/PL
Grids	1	2
Voltage, V	400	400
Power, kW	7	14
External dimensions, mm	400x900x850	800x900x850
Net weight, kg	60	105

Fryers



Model	APFE-49/2P/PL	APFE-49P/PL	APFE-89P/PL	APFG-49P/PL	APFG-89P/PL
Tanks	2	1	2	1	2
Capacity, l	8+8	18	18 + 18	18	18 + 18
Closed cabinet	*	*	*	*	*
Baskets included	2	1	2	1	2
Voltage, V	400	400	400	-	-
Electric power, kW	10,5	16	32	-	-
Gas power, kW	-	-	-	18	36
External dimensions, mm	400x900x850	400x900x850	800x900x850	400x900x1180	800x900x1180
Net weight, kg	51	51	81	64	105

Pasta Cookers



Model	APPE-49P/PL	APPE-89P/PL	APPG-49P/PL	APPG-89P/PL
Tanks	1	2	1	2
Capacity, l	40	40 + 40	40	40 + 40
Closed cabinet	*	*	*	*
Voltage, V	400	400	-	-
Electric power, kW	9	18	-	-
Gas power, kW	-	-	13,3	26,6
External dimensions, mm	400x900x850	800x900x850	400x900x850	800x900x850
Net weight, kg	46	71	52	84

Bain-Maries



Model	APBE-49P/PL	APBE-89P/PL
Capacity	GN 4/3	GN 8/3
Open stand	*	-
Voltage, V	230	400
Electric power, kW	2,5	6
External dimensions, mm	400x900x850	800x900x850
Net weight, kg	38	58

Boiling Pans



Model	APKE-89I-100L/PL	APKE-89I-150L/PL	APKG-89I-100L/PL	APKG-89I-150L/PL
Capacity, l	100	150	100	150
Direct heating	-	-	-	-
Indirect heating	*	*	*	*
Voltage, V	400	400	-	-
Electric power, kW	14,4	14,4	-	-
Gas power, kW	-	-	21	21
External dimensions, mm	800x900x850	800x900x850	800x900x850	800x900x850
Net weight, kg	118	124	118	124



Model	APKG-89D-100L/PL	APKG-89D-150L/PL
Capacity, l	100	150
Direct heating	*	*
Indirect heating	-	-
Voltage, V	-	-
Electric power, kW	-	-
Gas power, kW	21	21
External dimensions, mm	800x900x850	800x900x850
Net weight, kg	118	124

Neutral Worktops



Model	APN-49P/PL	APN-89P/PL
Open stand	*	*
External dimensions, mm	400x900x850	800x900x850
Net weight, kg	34	51

Electric Low Plates



Model	APRE-47QT/PL	APRE-77QT/PL
Hotplates	2	4
Hotplates power, kW	2x2,5	4x2,5
Voltage, V	400	400
Electric power, kW	5	10
External dimensions, mm	400x700x250	700x700x250
Net weight, kg	20	42

Electric Square Plates



Model	APRE-77T/PL	APRE-77T/PL
Hotplates	2	4
Hotplates power, kW	2x2,6	4x2,6
Voltage, V	400	400
Electric power, kW	5,2	10,4
External dimensions, mm	400x700x250	700x700x250
Net weight, kg	20	42

Induction



Model	APRI-47T/PL	APRI-77T/PL
Induction zones	2	4
Induction zones power, kW	2x3,5	4x3,5
Voltage, V	400	400
Electric power, kW	7	14
External dimensions, mm	400x700x250	700x700x250
Net weight, kg	32	58

Solid Tops



Model	APRES-77T/PL	APRGS-77T/PL
Thermal zones	4	1
Thermal zones power, kW	4x2,25	1x9
Voltage, V	400	-
Electric power, kW	9	-
Gas power, kW	-	9
External dimensions, mm	700x700x250	700x700x250
Net weight, kg	63	61

Lava Stone Grills



Model	APGG-47T/PL	APGG-77T/PL
Grids	2	4
Gas power, kW	7,5	15
External dimensions, mm	400x700x250	800x700x250
Net weight, kg	29	50

Bain-Maries



Model	APBE-47T/PL
Capacity	GN 1/1
Voltage, V	230
Electric power, kW	1,5
External dimensions, mm	400x700x250
Net weight, kg	17

Fry Tops



Model	APTE-47TL/PL	APTE-47TR/PL	APTE-77TL/PL
Smooth plate	*	-	*
Ribbed plate	-	*	-
1/2 smooth, 1/2 ribbed plate	-	-	-
Chromed plate	-	-	-
Hotplate dimensions, mm	350x570	350x570	650x570
Voltage, V	400	400	400
Electric power, kW	4	4	8
External dimensions, mm	400x700x250	400x700x250	700x700x250
Net weight, kg	36	36	65



Model	APTE-77TLC/PL	APTE-77TLR/PL	APTE-77TR/PL
Smooth plate	-	-	-
Ribbed plate	-	-	*
1/2 smooth, 1/2 ribbed plate	-	*	-
Chromed plate	*	-	-
Hotplate dimensions, mm	650x570	650x570	650x570
Voltage, V	400	400	400
Electric power, kW	8	8	8
External dimensions, mm	700x700x250	700x700x250	700x700x250
Net weight, kg	65	65	65



Model	APTG-47TL/PL	APTG-47TR/PL	APTG-77TL/PL
Smooth plate	*	-	*
Ribbed plate	-	*	-
1/2 smooth, 1/2 ribbed plate	-	-	-
Chromed plate	-	-	-
Hotplate dimensions, mm	350x570	350x570	650x570
Gas power, kW	5,5	5,5	11
External dimensions, mm	400x700x250	400x700x250	700x700x250
Net weight, kg	36	36	65

Fry Tops



Model	APTG-47TLC/PL	APTG-47TLR/PL	APTG-77TR/PL
Smooth plate	-	-	-
Ribbed plate	-	-	*
1/2 smooth, 1/2 ribbed plate	-	*	-
Chromed plate	*	-	-
Hotplate dimensions, mm	650x570	650x570	650x570
Gas power, kW	11	11	11
External dimensions, mm	700x700x250	700x700x250	700x700x250
Net weight, kg	65	65	65

Fryers



Model	APFE-47/2T/PL	APFE-47T/PL	APFE-77T/PL
Tanks	2	1	2
Capacity, l	6 + 6	12	12 + 12
Baskets included	2	1	2
Voltage, V	400	400	400
Electric power, kW	10,5	9	18
Gas power, kW	-	-	-
External dimensions, mm	400x700x250	400x700x250	700x700x250
Net weight, kg	25	23	43



Model	APFG-47T/PL	APFG-77T/PL
Tanks	1	2
Capacity, l	9	9 + 9
Baskets included	1	2
Voltage, V	-	-
Electric power, kW	-	-
Gas power, kW	7,4	14,8
External dimensions, mm	400x700x580	700x700x580
Net weight, kg	26	45

Pizza Ovens



Model	AML4X	AML6X
Chambers	1	1
Temperature, °C	50...500	50...500
Chamber dimensions, mm	720x720x140	720x1080x140
Power, kW	6	9
Voltage, V	400	400
External dimensions, mm	1010x850x420	1010x1210x420
Net weight, kg	115	165



Model	AML44X	AML66X
Chambers	2	2
Temperature, °C	50...500	50...500
Chamber dimensions, mm	720x720x140	720x1080x140
Power, kW	12	18
Voltage, V	400	400
External dimensions, mm	1010x850x750	1010x1210x750
Net weight, kg	200	300



Model	AMM4 P	AMM6 P
Chambers	1	1
Temperature, °C	45...450	45...450
Chamber dimensions, mm	720x720x140	720x1080x140
Power, kW	6	9
Voltage, V	400	400
External dimensions, mm	1000x955x413	1000x1315x413
Net weight, kg	77	110



Model	AMM44 P	AMM66 P
Chambers	2	2
Temperature, °C	45...450	45...450
Chamber dimensions, mm	720x720x140	720x1080x140
Power, kW	12	18
Voltage, V	400	400
External dimensions, mm	1000x955x745	1000x1315x745
Net weight, kg	139	198



Model	AMS4X	AMM4X
Chambers	1	1
Temperature, °C	50...500	50...500
Chamber dimensions, mm	660x660x140	700x700x140
Power, kW	4,2	4,8
Voltage, V	400	400
External dimensions, mm	900x790x420	930x840x310
Net weight, kg	73	52



Model	AMS44X	AMM44X
Chambers	2	12
Temperature, °C	50...500	50...500
Chamber dimensions, mm	660x660x140	700x700x140
Power, kW	8,4	9,6
Voltage, V	400	400
External dimensions, mm	900x790x750	930x840x540
Net weight, kg	123	94

Pizza Ovens



Model	AMS1 P	AMS2 P
Chambers	1	2
Temperature, °C	50...320	50...320
Chamber dimensions, mm	410x360x90	410x360x90
Power, kW	1,6	3,2
Voltage, V	230	230
External dimensions, mm	615x500x280	615x505x430
Net weight, kg	21	32



Model	AMS1 ECO P	AMS2 ECO P
Chambers	1	2
Temperature, °C	50...320	50...320
Chamber dimensions, mm	410x360x90	410x360x90
Power, kW	1,6	2,4
Voltage, V	230	230
External dimensions, mm	615x500x280	615x505x430
Net weight, kg	21	32



Model	AMG4	AMG6	AMG9
Chambers	1	1	1
Burners	5	5	7
Temperature, °C	50...450	50...450	50...450
Chamber dimensions, mm	620x620x155	620x920x155	920x920x155
Gas power, kW	13,9	18	24,5
External dimensions, mm	1000x840x470	1000x1140x470	1300x1140x470
Net weight, kg	112	141	179

Sous Vide Cookers



Model	ASV 2/3 GN NEW	ASV 2/3 GN R NEW
Working temperature, °C	24...99	24...99
Capacity, l	14	17
Drain tap	-	*
Voltage, V	230	230
Power, kW	1,15	1,15
External dimensions, mm	390x360x300	400x370x300
Net weight, kg	5	5,5



Model	ASV 1/1 GN NEW	ASV 1/1 GN R NEW
Working temperature, °C	24...99	24...99
Working capacity, l	22	25
Drain tap	-	*
Voltage, V	230	230
Power, kW	1,7	1,7
External dimensions, mm	565x360x300	575x370x300
Net weight, kg	16	16,5



Model	ASV2 NEW	ASV WI-FOOD
Working temperature, °C	24...99	24...99,9
Voltage, V	230	230
Power, kW	2	2
External dimensions, mm	130x260x380	165x203x377
Net weight, kg	4,5	4

REFRIGERATION EQUIPMENT

Apach

Refrigerated and Freezer Cabinets

Refrigerated and Freezer Counters

Shock Freezers

Refrigerated and Freezer Cabinets



Model	F 700 TN DOM PLUS	F 700 BT DOM PLUS	F 1400 TN DOM PLUS	F 1400 BT DOM PLUS
Volume, l	700	700	1400	1400
Useful volume, l	590	590	1300	1300
Temperature, °C	-2 ... +8	-18 ... -22	-2 ... +8	-18 ... -22
Grids included	3	3	6	6
Refrigerant	R452a	R452a	R452a	R452a
Voltage, V	230	230	230	230
Power, W/h	301	364	702	702
External dimensions, mm	710x800x2035	710x800x2035	1420x800x2035	1420x800x2035

Refrigerated and Freezer Counters



Model	AFM 02	AFM 02 BT	AFM 03	AFM 03 BT
Doors	2	2	3	3
Capacity, l	310	310	460	460
Temperature, °C	0 ... +10	-18 ... -22	0 ... +10	-18 ... -22
GN supported	GN 1/1	GN 1/1	GN 1/1	GN 1/1
Voltage, V	230	230	230	230
Power, kW	0,495	0,655	0,495	0,7
External dimensions, mm	1420x700x850	1420x700x850	1870x700x876	1870x700x876



Model	AFM 02 AL	AFM 02 BT AL	AFM 03 AL	AFM 03 BT AL
Doors	2	2	3	3
Capacity, l	210	210	315	315
Temperature, °C	0 ... +10	-18 ... -22	0 ... +10	-18 ... -22
GN supported	GN 1/1	GN 1/1	GN 1/1	GN 1/1
Voltage, V	230	230	230	230
Power, kW	0,495	0,655	0,495	0,7
External dimensions, mm	1420x700x950	1420x700x950	1870x700x950	1870x700x950

Refrigerated and Freezer Counters



Model	AFM 04	AFM 04 AL
Doors	4	4
Capacity, l	620	620
Temperature, °C	0 ... +10	0 ... +10
GN supported	GN 1/1	GN 1/1
Voltage, V	230	230
Power, kW	0,495	0,495
External dimensions, mm	2320x700x876	2320x700x950

Shock Freezers



Model	SH03	SH05	SH07
Trays load capacity	3	5	7
Supported trays	GN 1/1 - 600x400	GN 1/1 - 600x400	GN 1/1 - 600x400
Grid spacing, mm	70	70	105
90 min cycle (+70 °C to +3 °C), kg	15	23	25
240 min cycle (+70 °C to -18 °C), kg	9	12	15
Power, kW	1,15	1,42	1,49
Voltage, V	230	230	230
External dimensions, mm	750x740x750	750x740x870	750x740x1300
Net weight, kg	82	92	111



Model	SH10	SH15	SH20
Trays load capacity	10	15	20
Supported trays	GN 1/1 - 600x400	GN 1/1 - 600x400	GN 1/1 - 600x400
Grid spacing, mm	70	70	70
90 min cycle (+70 °C to +3 °C), kg	35	45	60
240 min cycle (+70 °C to -18 °C), kg	20	25	35
Power, kW	1,6	1,82	2,04
Voltage, V	230	400	400
External dimensions, mm	750x740x1300	750x740x1860	750x740x2090
Net weight, kg	117	166	184

Shock Freezers



Model	ASH03V GN2/3	ASH03K	ASH05K	ASH05K DF
Trays load capacity	3	3	5	5
Supported trays	GN 2/3	GN 1/1 - 600x400	GN 1/1 - 600x400	GN 1/1 - 600x400
Grid spacing, mm	68	85	68	68
90 min cycle (+70 °C to +3 °C), kg	7	10	20	20
240 min cycle (+70 °C to -18 °C), kg	5	6	13	13
Power, kW	0,46	0,83	1,3	1,3
Voltage, V	230	230	230	230
External dimensions, mm	643x640x460	760x670x875	760x670x899	760x670x899
Net weight, kg	50	77	82	82



Model	ASH08K	ASH08K DF	ASH10K	ASH10K DF
Trays load capacity	8	8	10	10
Supported trays	GN 1/1 - 600x400	GN 1/1 - 600x400	GN 1/1 - 600x400	GN 1/1 - 600x400
Grid spacing, mm	75	75	73	73
90 min cycle (+70 °C to +3 °C), kg	35	35	35	35
240 min cycle (+70 °C to -18 °C), kg	20	20	20	20
Power, kW	2,195	2,195	2,788	2,788
Voltage, V	230	230	400	400
External dimensions, mm	790x760x1610	790x760x1610	790x760x1610	790x760x1610
Net weight, kg	128	128	136	136



Model	ASH10K LP	ASH10K LPDF	ASH15K	ASH15K DF
Trays load capacity	10	10	15	15
Supported trays	GN 1/1 - 600x400	GN 1/1 - 600x400	GN 1/1 - 600x400	GN 1/1 - 600x400
Grid spacing, mm	73	73	73	73
90 min cycle (+70 °C to +3 °C), kg	40	40	60	60
240 min cycle (+70 °C to -18 °C), kg	25	25	40	40
Power, kW	2,195	2,195	3,512	3,512
Voltage, V	230	230	400	400
External dimensions, mm	790x760x1610	790x760x1610	790x760x1945	790x760x1945
Net weight, kg	129	129	161	161

WASHING EQUIPMENT

- Glasswashing Machines
- Front-Loading Dishwashing Machines
- Hood Type Dishwashing Machines
- Utensil Washing Machines
- Rack Type Dishwashing Machines



Model	AF400	AF400 DDP
Control panel	Manual	Manual
Capacity, racks/h	30	30
Useful height, mm	320	320
Rack size, mm	385x385	385x385
Cycles, sec	120	120
Water consumption/cycle, l	1,8	1,8
Voltage, V	230	230
Power, kW	3,5	3,5
External dimensions, mm	436x535x670	436x535x670
Net weight, kg	31	31
CONFIGURATION		
Detergent dispenser	-	*
Rinse aid dispenser	*	*
Drain pump	-	*
Cold water connection	-	-
Tank filters	*	*
Glass rack	*	*
Cutlery container	*	*
Support for plates	*	*



Model	AFTRD400 (919046) DD
Control panel	Manual
Useful height, mm	320
Rack size, mm	400x400
Cycles, sec	120
Water consumption/cycle, l	2
Voltage, V	230
Power, kW	3,4
External dimensions, mm	440x550x680
Net weight, kg	29
CONFIGURATION	
Detergent dispenser	*
Rinse aid dispenser	*
Drain pump	-
Cold water connection	*
Tank filters	-
Glass rack	*
Cutlery container	-
Support for plates	-

Front-Loading Dishwashing Machines



Model	AF500 (917968)	AF500 (918209)	AF500DD
Control panel	Manual	Manual	Manual
Capacity, racks/h	40/24	40/24	40/24
Useful height, mm	365	365	365
Rack size, mm	500x500	500x500	500x500
Cycles, sec	90/150	90/150	90/150
Water consumption/cycle, l	2,5	2,5	2,5
Voltage, V	230/400	230/400	230/400
Power, kW	3,5	3,5	3,5
External dimensions, mm	575x605x820	575x605x820	575x605x820
Net weight, kg	56	56	56

CONFIGURATION

Detergent dispenser	-	-	*
Rinse aid dispenser	*	*	*
Drain pump	-	*	-
Cold water connection	-	-	-
Tank filters	*	*	*
Glass rack	*	*	*
Cutlery container	*	*	*
Dish rack	*	*	*



Model	AF500DIG P
Control panel	Digital
Capacity, racks/h	60/30/24
Useful height, mm	365
Rack size, mm	500x500
Cycles, sec	60/120/150
Water consumption/cycle, l	2,5
Voltage, V	230/400
Power, kW	3,5
External dimensions, mm	575x605x820
Net weight, kg	56

CONFIGURATION

Detergent dispenser	-
Rinse aid dispenser	*
Drain pump	*
Cold water connection	-
Tank filters	*
Glass rack	*
Cutlery container	*
Dish rack	*

Front-Loading Dishwashing Machines



Model	AF501 (917971)	AF501 (918319)	AF501DIG DDP
Control panel	Manual	Manual	Digital
Capacity, racks/h	40/24	40/24	60/30/24
Useful height, mm	365	365	365
Rack size, mm	500x500	500x500	500x500
Cycles, sec	90/150	90/150	60/120/150
Water consumption/cycle, l	2,5	2,5	2,5
Voltage, V	400	230/400	400
Power, kW	5,5	5,5	5,5
External dimensions, mm	575x605x820	575x605x820	575x605x820
Net weight, kg	56	56	56

CONFIGURATION

Detergent dispenser	-	*	*
Rinse aid dispenser	*	*	*
Drain pump	-	*	*
Cold water connection	*	*	*
Tank filters	*	*	*
Glass rack	*	*	*
Cutlery container	*	*	*
Dish rack	*	*	*



Model	AFTRD500 (919047) DD	AFTRD500 (919048) DDP
Control panel	Manual	Manual
Useful height, mm	350	350
Rack size, mm	500x500	500x500
Cycles, sec	60/120	60/120
Voltage, V	230	230
Power, kW	3,5	3,5
External dimensions, mm	580x630x830	580x630x830
Net weight, kg	31	31

CONFIGURATION

Detergent dispenser	*	*
Rinse aid dispenser	*	*
Drain pump	-	*
Cold water connection	*	*
Tank filters	-	-
Glass rack	*	*
Cutlery container	-	-
Dish rack	*	*

Hood Type Dishwashing Machines



Model	AC800 (ST3800RU)	AC800 (ST3801RU)	AC800DD (ST3800RUDD)
Control panel	Manual	Manual	Manual
Capacity, racks/h	60/30	60/30	60/30
Hood opening, mm	450	450	450
Rack size, mm	500x500	500x500	500x500
Cycles, sec	60/120	60/120	60/120
Water consumption/cycle, l	2,6	2,6	2,6
Voltage, V	400	400	400
Power, kW	8,5	8,5	8,5
External dimensions, mm	724x818x1529	724x818x1529	724x818x1529
Net weight, kg	90	90	90
CONFIGURATION			
Detergent dispenser	-	-	*
Rinse aid dispenser	*	*	*
Drain pump	-	*	-
Cold water connection	*	*	*
Tank filters	*	*	*
Dish rack	*	*	*
Glass rack	*	*	*
Cutlery container	*	*	*

Model	AC800PSDD (ST3801RUDD)	AC800DIG PSDD
Control panel	Manual	Digital
Capacity, racks/h	60/30	60/30/24
Hood opening, mm	450	450
Rack size, mm	500x500	500x500
Cycles, sec	60/120	60/120/150
Water consumption/cycle, l	2,6	2,6
Voltage, V	400	400
Power, kW	8,5	8,5
External dimensions, mm	724x818x1529	724x818x1529
Net weight, kg	90	90
CONFIGURATION		
Detergent dispenser	*	*
Rinse aid dispenser	*	*
Drain pump	*	*
Cold water connection	*	*
Tank filters	*	*
Dish rack	*	*
Glass rack	*	*
Cutlery container	*	*

Hood Type Dishwashing Machines



Model	AC990 (TT3920RU)	AC990DD (TT3920RUDD)
Control panel	Manual	Manual
Capacity, racks/h	60/40/30/10	60/40/30/10
Hood opening, mm	465	465
Rack size, mm	500x600	500x600
Cycles, sec	60/90/120/360	60/90/120/360
Water consumption/cycle, l	3,2	3,2
Voltage, V	400	400
Power, kW	11	11
External dimensions, mm	788x835x1565	788x835x1565
Net weight, kg	113	113
CONFIGURATION		
Detergent dispenser	-	*
Rinse aid dispenser	*	*
Drain pump	-	-
Cold water connection	*	*
Tank filters	*	*
Dish rack	*	*
Glass rack	*	*
Cutlery container	*	*

Model	ACTRD800DD (TH50STRUDD)	ACTRD800DDP (TH50STRUDDPS)
Control panel	Manual	Manual
Hood opening, mm	400	400
Rack size, mm	500x500	500x500
Cycles, sec	60/120	60/120
Voltage, V	400	400
Power, kW	6,5	6,5
External dimensions, mm	640x750x1600	640x750x1600
Net weight, kg	90	90
CONFIGURATION		
Detergent dispenser	*	*
Rinse aid dispenser	*	*
Drain pump	-	*
Cold water connection	*	*
Tank filters	*	*
Dish rack	*	*
Glass rack	*	*
Cutlery container	-	-



**Utensil
Washing
Machines**



Model	AK900	AK900P	AK900H	AK900HP
Control pane	Digital (5 cycles + 3 service cycles)	Digital (5 cycles + 3 service cycles)	Digital (5 cycles + 3 service cycles)	Digital (5 cycles + 3 service cycles)
Hood opening, mm	-	-	-	-
Rack size, mm	500x600	500x600	500x600	500x600
Water consumption/cycle, l	2,4	2,4	2,4	2,4
Voltage, V	400	400	400	400
Power, kW	9,8	9,8	9,8	9,8
External dimensions, mm	600x700x850	600x700x850	600x700x1290	600x700x1290
Net weight, kg	61	61	71	71

CONFIGURATION

Detergent dispenser	*	*	*	*
Rinse aid dispenser	*	*	*	*
Drain pump	-	*	-	*
Self cleaning cycle	*	*	*	*
Cold water connection	*	*	*	*
Tank filters	*	*	*	*
Stainless steel rack	*	*	*	*
Stainless steel tray insert	-	-	-	-



Model	AK901	AK902
Control pane	Digital (4 cycles + 4 service cycles)	Digital (4 cycles + 4 service cycles)
Hood opening, mm	650	850
Rack size, mm	560x630	560x630
Water consumption/cycle, l	3-4,5	3-4,5
Voltage, V	400	400
Power, kW	10,5	10,5
External dimensions, mm	719x782x1727	719x782x1927
Net weight, kg	148	173

CONFIGURATION

Detergent dispenser	*	*
Rinse aid dispenser	*	*
Self cleaning cycle	*	*
Cold water connection	*	*
Tank filters	*	*
Stainless steel rack	*	*
Stainless steel tray insert	-	-

Utensil Washing Machines

Model	AK 924 (LP722RUDD)	AK 924P (LP723RUDD)
Control panel	Digital / 8 programs	Digital / 8 programs
Hood opening, mm	850	850
Rack size, mm	1320x700	1320x700
Cycles, sec	120/240/360/720	120/240/360/720
Special cycles, sec	300/480/600	300/480/600
Water consumption/cycle, l	6-8	6-8
Voltage, V	400	400
Power, kW	15,9	15,9
External dimensions, mm	1465x857x1959	1465x857x1959
Net weight, kg	301	301
CONFIGURATION		
Detergent dispenser	*	*
Rinse aid dispenser	*	*
Drain pump	-	*
Self cleaning cycle	*	*
Cold water connection	*	*
Tank filters	*	*
Stainless steel rack	*	*
Stainless steel tray insert	-	-



Rack Type Washing Machines

Model	ARC100
Control panel	Digital
Capacity, racks/h	60/120
Hood opening, mm	440
Rack size, mm	500x500
Water consumption, l/hour	150
Voltage, V	400
Power, kW	22
External dimensions, mm	1150x770x1615
Net weight, kg	200
CONFIGURATION	
Loading	left/right
Detergent dispenser	option
Rinse aid dispenser	option
Tank filters	*
Prewash	option
Cold water connection	option
Drying module	option
Heat recovery system	option
Glass rack	*
Dish rack	*
Cutlery container	*



BAR & COFFEE EQUIPMENT

Ice Cube Makers
Granulated Ice Makers
Flake Ice Makers
Ice Bins
Ice Crushers
Blenders
Drink Mixers
Juice Squeezers

Ice Cube Makers



* Plastic body

Model	ACB2204B A/W	ACB2204B AP/WP	ACB2806B A/W	ACB3209B A/W
Cooling system	air/water	air/water	air/water	air/water
Production capacity, kg/day	22	22	28	32
Ice bin capacity, kg	4	4	6	9
Ice cube weight, g	14	14	17	17
Voltage, V	230	230	230	230
Power, kW	0,32	0,32	0,27	0,27
External dimensions, mm	355x404x590	355x404x590	387x470x607	387x470x687
Net weight, kg	27,5	27,5	31	32,5



Model	ACB3716B A/W	ACB4625B A/W	ACB5325B A/W	ACB6840B A/W
Cooling system	air/water	air/water	air/water	air/water
Production capacity, kg/day	37	46	53	68
Ice bin capacity, kg	16	25	25	40
Ice cube weight, g	17	17	17	17
Voltage, V	230	230	230	230
Power, kW	0,38	0,46	0,5	0,7
External dimensions, mm	497x592x687	497x592x797	497x592x887	735x603x850
Net weight, kg	40	46	55	67

Ice Cube Makers



Model	ACB8840B A/W	ACB100.60B A/W	ACB130.65B A/W	ACB155.65B A/W
Production capacity, kg/day	88	100	130	155
Ice bin capacity, kg	40	60	65	65
Ice cube weight, g	17	17	17	17
Water supply	mains	mains	mains	mains
Voltage, V	230	230	230	230
Power, kW	0,8	0,85	1,05	1,4
External dimensions, mm	735x603x910	735x603x1010	840x740x1075	840x740x1075
Cooling system	air/water	air/water	air/water	air/water
Net weight, kg	71	74	113	118

Granulated Ice Makers



Model	AGB6010B A/W	AGB9519B A/W	AGB155.38B A/W	AGB155.55B A/W
Production capacity, kg/day	60	95	155	155
Ice bin capacity, kg	10	19	38	55
Water supply	mains	mains	mains	mains
Voltage, V	230	230	230	230
Power, kW	0,42	0,55	0,65	0,65
External dimensions, mm	450x620x680	496x660x685	741x678x925	741x678x1015
Cooling system	air/water	air/water	air/water	air/water
Net weight, kg	56	59	85	87

Granulated Ice Makers



Without ice bin

Model	AG160B A/W	AG280B A/W	AG510B A/W	AG1000B A/W
Production capacity, kg/day	160	280	510	1000
Water supply	mains	mains	mains	mains
Voltage, V	230	230	230	400
Power, kW	0,65	1,05	1,7	3,2
External dimensions, mm	560x569x600	560x569x695	560x569x695	934x684x700
Cooling system	air/water	air/water	air/water	air/water
Net weight, kg	63	83	102	167

Flake Ice Makers



Without ice bin

Model	AS250B A/W	AS400B A/W	AS620B A/W
Production capacity, kg/day	250	400	620
Water supply	mains	mains	mains
Voltage, V	230	230	400
Power, kW	1,7	2,1	3
External dimensions, mm	870x550x600	900x588x705	900x588x705
Cooling system	air/water	air/water	air/water

Model	AS900B A/W	AS1500B A/W	AS5000B A
Production capacity, kg/day	900	1500	5000
Water supply	mains	mains	mains
Voltage, V	400	400	400
Power, kW	4,6	6	16
External dimensions, mm	1107x700x880	1107x700x970	1270x1400x1620
Cooling system	air/water	air/water	air

Ice Bins



Model	BIN200-AG/AS/AC/ ASC.B	BIN350-AG/AS/AC/ ASC.B	BIN550-AG/AS/AC/ ASC.B
Bin capacity, kg	200	350	550
External dimensions, mm	870x790x1000	1250x790x1000	1110x1060x1915
Net weight, kg	74	105	163



Model	BIN108*2.50-AG/AS/ AS.B	BIN108*2.300-AG/ AS.B
Bin capacity, kg	180x2 + 50	180x2 + 300
External dimensions, mm	1560x1060x1484	1560x1330x1780
Net weight, kg	135	204

Ice Crushers



Model	AIC2
Rotation speed, rpm	1 500
Voltage, V	230
Power, kW	0,35
External dimensions, mm	210x465x295
Net weight, kg	8,5

Blenders

Model	ABL1P ECO
Cup	plastic
Body	plastic
Capacity, l	1x1,5
Rotation speed, rpm	16 000
Voltage, V	230
Power, kW	0,45
External dimensions, mm	213x200x416
Net weight, kg	3

Drink Mixers

Model	AMX1 ECO	AMX2 ECO
Cup	stainless steel	stainless steel
Capacity, l	0,9	2x0,9
Rotation speed, rpm	14 000	14 000
Voltage, V	230	230
Power, kW	0,12	0,24
External dimensions, mm	150x195x530	300x195x530
Net weight, kg	3	6

Juice Squeezers

Model	ACS1 ECO	ACS2 ECO
Body/Color	plastic/chrome	plastic/chrome
Rotation speed, rpm	320	320
Voltage, V	230	230
Power, kW	0,15	0,15
External dimensions, mm	210x210x280	210x265x385
Net weight, kg	3	3,5

FOOD PROCESSING EQUIPMENT

Cutters

Vegetable Cutters

Potato Peelers

Meat Mincers

Meat Mixers

Bone Saws

Sausage Fillers

Burger Presses

Slicers

Pizza Rolling Machines

Pizza Presses

Immersion Blenders

Cheese Graters

Spiral Mixers

Cutters



Model	ACT4	ACT6	ACT9
Rotation speed, rpm	1500-2500	1500-2500	1500-2500
Bowl capacity, l	3,3 / 1,5	5,3 / 3,1	9,4 / 5,4
Power, kW	0,35	0,35	0,7
Voltage, V	230	230	230
External dimensions, mm	305x365x255	305x365x320	355x455x380
Net weight, kg	10	11	23

Vegetable Cutters



Model	AVG200	AVG400
Production capacity, kg/h	80...200	250...450
Rotation speed, rpm	300	320
Power, kW	0,515	0,58
Voltage, V	230	230
External dimensions, mm	280x510x510	280x490x530
Net weight, kg	17,5	21,5

Potato Peelers



Model	APP5 1PH/3PH	APP10 1PH/3PH	APP18 1PH/3PH
Production capacity, kg/h	150	300	500
Maximum load, kg	5	10	18
Rotation speed, rpm	270	320	320
Cycle, sec	60-90	90-120	120-150
Power, kW	0,37	0,55	0,9
Voltage, V	230/400	230/400	230/400
External dimensions, mm	434x450x700	434x678x850	434x678x950
Net weight, kg	35	40	45

Meat Mincers



Model	ATS8 / ATS8 SS	ATS12 / ATS12 SS	ATS12U / ATS12U SS
Cutting system	enterprise	enterprise	1/2 unger
Production capacity, kg/h	15	150/200	200
Standart plate hole diameter, mm	6	6	6
Mouth diameter, mm	60	70	70
Mincing group type	aluminum / stainless steel	cast iron / stainless steel	cast iron / stainless steel
Power, kW	0,38	0,75	1,1
Voltage, V	230	230/400	230/400
External dimensions, mm	270x260x360	370x220x440	370x220x440
Net weight, kg	9/9	19/16	23/21



Model	ATS22 / ATS22 SS	ATS22UT / ATS22UT SS
Cutting system	enterprise	unger
Production capacity, kg/h	300	300
Standart plate hole diameter, mm	6	10 + 6
Mouth diameter, mm	82	82
Mincing group type	cast iron / stainless steel	cast iron / stainless steel
Power, kW	1,1	1,1
Voltage, V	230/400	230/400
External dimensions, mm	440x240x510	470x240x510
Net weight, kg	24/22	25/23



Model	ATI22UT / ATI22UT SS	ATI22RUT	ATI32RSUT
Cutting system	unger	unger	unger
Production capacity, kg/h	300	350/400	500
Standart plate hole diameter, mm	10 + 6	10 + 6	10 + 6
Mouth diameter, mm	82	82	98
Mincing group type	cast iron / stainless steel	stainless steel	stainless steel
Power, kW	1,1	1,5	1,6
Voltage, V	230/400	230/400	230/400
External dimensions, mm	470x220x440	450x260x530	510x260x530
Net weight, kg	26/24	33/33	40/40

Meat Mixers



Model	AMK10 1PH	AMK20 1PH	AMK30 1PH/3PH	AMK50 1PH/3PH
Maximum load, kg	10	20	30	50
Paddles	1	1	1	1
Voltage, V	230	230	230/400	230/400
Power, kW	0,18	0,37	1,1/1,472	1,1/1,472
External dimensions, mm	438x255x406	515x337x465	680x365x530	750x465x595
Net weight, kg	18	22	49	59

Bone Saws



Model	ASW155 1PH/3PH	ASW183 1PH/3PH	ASW155A 1PH/3PH	ASW183A 1PH/3PH
Blade length, mm	1550	1830	1550	1830
Cut size, mm	170x150	200x225	170x150	200x225
Work table, mm	330x330	410x410	330x330	410x410
Power, kW	0,75	0,75	0,75	0,75
Voltage, V	230/400	230/400	230/400	230/400
External dimensions, mm	440x370x810	530x420x910	440x370x810	530x420x910
Net weight, kg	34	38	34	38

Manual Sausage Fillers



⊕ Funnels included

Model	ASF3	ASF5	ASF8
Capacity, l	3	5	8
Speeds	1	2	2
External dimensions, mm	370x220x200	590x230x240	750x230x240
Net weight, kg	8	11	13

Burger Presses

Model	AHP100	AHP130
Bowl diameter, mm	100	130
External dimensions, mm	250x190x320	300x190x280
Net weight, kg	5	7



Slicers

Model	ASL220 / ASL220 TEFLON	ASL250 / ASL250 TEFLON	ASL275 / ASL275 TEFLON	ASL300 / ASL300 TEFLON
Blade diameter, mm	220	250	275	300
Max slice thickness, mm	13	13	13	13
Carriage run, mm	245	245	245	285
Tray size, mm	230x240	230x240	230x240	250x275
Blade	toothed/Teflon coated	toothed/Teflon coated	toothed/Teflon coated	toothed/Teflon coated
Power, kW	0,147	0,147	0,147	0,21
Voltage, V	230	230	230	230
External dimensions, mm	570x560x370	570x560x370	570x560x370	640x610x420
Net weight, kg	15	16	17	20,5

**Pizza
Rolling
Machines**

Model	ARM310	ARM310 TG	ARM420	ARM420 TG
Pizza diameter, mm	14-30	14-30	26-40	26-40
Dough piece weight, g	80-210	80-210	210-700	210-700
Auto start	-	*	-	*
Power, kW	0,25	0,25	0,25	0,25
Voltage, V	230	230	230	230
External dimensions, mm	475x375x660	475x375x660	585x435x790	585x435x790
Net weight, kg	30	30	36	36

**Pizza
Presses**

Model	APRESS33	APRESS45
Power, kW	4,75	6,1
Voltage, V	400	400
Operating temperature, °C	0...170	0...170
Dough thickness, mm	0...20	0...20
Dough piece weight, g	130-250	250-500
Pizza diameter, mm	33	45
External dimensions, mm	470x590x830	630x670x890
Net weight, kg	96	127

Immersion Blenders



Model	AHM250V200	AHM250V200C	AHM250V250	AHM250V250C	AHM350F300
Attachment	shaft	shaft + whisk	shaft	shaft + whisk	shaft
Speeds	variable speed	variable speed	variable speed	variable speed	1
Rotation speed, rpm	2500-15000	2500-15000	2500-15000	2500-15000	15000
Shaft length, mm	200	200	250	250	300
Power, kW	0,25	0,25	0,25	0,25	0,35
Voltage, V	230	230	230	230	230
External dimensions, mm	75x75x505	75x75x505	75x75x555	75x75x555	130x130x680
Net weight, kg	1,4	1,4	1,45	1,45	3,8

Model	AHM350V300	AHM350V300C	AHM450F300	AHM450V300	AHM450V300C
Attachment	shaft	shaft + whisk	shaft	shaft	shaft + whisk
Speeds	9 + 1	9 + 1	1	9 + 1	9 + 1
Utensil rotation speed, rpm	2000...9000/ 15000	2000...9000/ 15000	17000	2000...11000/ 17000	2000...11000/ 17000
Shaft length, mm	300	300	300	300	300
Power, kW	0,35	0,35	0,45	0,45	0,45
Voltage, V	230	230	230	230	230
External dimensions, mm	130x130x680	130x130x680	130x130x700	130x130x700	130x130x700
Net weight, kg	3,8	3,8	4,4	4,4	4,4

Model	AHM450F400	AHM450V400	AHM450V400C	AHM650F500
Attachment	shaft	shaft	shaft + whisk	shaft
Speeds	1	9 + 1	9 + 1	1
Utensil rotation speed, rpm	17000	2000...11000/ 17000	2000...11000/ 17000	13000
Shaft length, mm	400	400	400	500
Power, kW	0,45	0,45	0,45	0,65
Voltage, V	230	230	230	230
External dimensions, mm	130x130x800	130x130x800	130x130x800	130x130x920
Net weight, kg	4,65	4,65	4,65	5,3

Cheese Graters



For soft cheese

Model	AGR1	AGR2
Production capacity, kg/h	30	50
Rotation speed, rpm	1400	1400
Voltage, V	230	230
Power, kW	0,38	0,75
External dimensions, mm	280x170x310	420x220x440
Net weight, kg	8	18

Spiral Mixers



Fixed bowl

Model	ASM07F	ASM10F	ASM16F	ASM16F 2S
Speeds	1	1	1	2
Production capacity, kg/h	29	35	48	48
Bowl capacity, l	7	10	16	16
Maximum load, kg	5	8	12	12
Power, kW	0,37	0,37	0,75	1,1
Voltage, V	230	230	230	400
External dimensions, mm	240x500x500	260x500x500	385x670x725	385x670x725
Net weight, kg	41	42	65	65

Model	ASM22F	ASM22F 2S	ASM32F	ASM32F 2S
Speeds	1	2	1	2
Production capacity, kg/h	56	56	88	88
Bowl capacity, l	22	22	32	32
Maximum load, kg	17	17	25	25
Power, kW	0,75	1,1	1,1	1,7
Voltage, V	230	400	230	400
External dimensions, mm	385x670x725	385x670x725	424x735x805	424x735x805
Net weight, kg	65	65	86,6	86,6

Model	ASM41F	ASM41F 2S	ASM48F	ASM48F 2S
Speeds	1	2	1	2
Production capacity, kg/h	112	112	128	128
Bowl capacity, l	41	41	48	48
Maximum load, kg	35	35	42	42
Power, kW	1,1	1,7	1,5	2,2
Voltage, V	230	400	230	400
External dimensions, mm	480x805x825	480x805x825	480x805x825	480x805x825
Net weight, kg	95,4	95,4	97,4	97,4

Model	ASMX33F 2S	ASMX42F 2S	ASMX53F 2S	ASMX62F 2S
Speeds	2	2	2	2
Bowl capacity, l	33	42	53	62
Maximum load, kg	25	33	42	50
Power, kW	1,1	2	2	2
Voltage, V	400	400	400	400
External dimensions, mm	450x740x730	510x840x780	560x880x830	560x880x830
Net weight, kg	70	94	95	97

Spiral Mixers



Removable bowl

Model	ASM07R	ASM10R	ASM16R	ASM16R 2S
Speeds	1	1	1	2
Production capacity, kg/h	29	35	48	48
Bowl capacity, l	7	10	16	16
Maximum load, kg	5	8	12	12
Power, kW	0,37	0,37	0,75	1,1
Voltage, V	230	230	230	400
External dimensions, mm	385x670x675	385x670x675	385x670x725	385x670x725
Net weight, kg	58	60	71,5	71,5

Model	ASM22R	ASM22R 2S	ASM32R	ASM32R 2S
Speeds	1	2	1	2
Production capacity, kg/h	56	56	88	88
Bowl capacity, l	22	22	32	32
Maximum load, kg	17	17	25	25
Power, kW	0,75	1,1	1,1	1,7
Voltage, V	230	400	230	400
External dimensions, mm	385x670x725	385x670x725	424x735x805	424x735x805
Net weight, kg	73	73	94,6	94,6

Model	ASM41R	ASM41R 2S	ASM48R	ASM48R 2S
Speeds	1	2	1	2
Production capacity, kg/h	112	112	128	128
Bowl capacity, l	41	41	48	48
Maximum load, kg	35	35	42	42
Power, kW	1,1	1,7	1,5	2,2
Voltage, V	230	400	230	400
External dimensions, mm	480x805x825	480x805x825	480x805x825	480x805x825
Net weight, kg	105,4	105,4	107,4	107,4

PACKAGING EQUIPMENT

Vacuum Packaging



Model	AVM254	AVM308	AVM308L	AVM312
Vacuum pump capacity, m ³ /h	4	8	8	12
Sealing beam, mm	250	310	310	310
Max bag width, mm	250	300	300	300
Gas injection	-	*	*	*
Marination cycle	-	-	-	-
Chamber dimensions, mm	270x352x150	332x335x170	343x434x175	343x434x175
Power, kW	0,29	0,38	0,4	0,55
Voltage, V	230	230	230	230
External dimensions, mm	357x490x329	395x490x374	415x592x407	415x592x407
Net weight, kg	32	40	46	50

Model	AVM312CHEF	AVM412	AVM420	AVM420CHEF
Vacuum pump capacity, m ³ /h	12	12	20	20
Sealing beam, mm	310	410	410	410
Max bag width, mm	300	400	400	400
Gas injection	*	*	*	*
Marination cycle	*	-	-	*
Chamber dimensions, mm	343x434x175	441x449x170	441x449x170	440x448x170
Power, kW	0,55	0,55	0,7	0,7
Voltage, V	230	230	230	230
External dimensions, mm	415x592x407	535x591x438	535x591x438	535x598x436
Net weight, kg	44,5	60	64	59

Model	AVM425	AVM425F	AVM660F
Vacuum pump capacity, m ³ /h	25	25	60
Sealing beam, mm	455	1x455	2x620
Max bag width, mm	450	450	600
Gas injection	option	option	option
Chamber dimensions, mm	485x550x175	485x550x175	650x535x200
Power, kW	1,2	1,2	1,5
Voltage, V	230	230	400
External dimensions, mm	600x710x500	600x710x1035	765x710x1050
Net weight, kg	96	116	167

Vacuum Packers



Model	AVM3	AVM4
Power, kW	0,22	0,75
Voltage, V	230	230
Vacuum pump capacity, l/h	11	30
Sealing beam, mm	310	420
External dimensions, mm	375x297x145	470x308x154
Net weight, kg	7	13

GASTRONORMS & TRAYS

**Aluminium
Trays**



Model	External dimensions, mm
PT13	600x400
PT30	460x340
PT31	450x340

**Perforated
Aluminium Trays**



Model	External dimensions, mm
PT12	600x400
PT35	460x340
PT33	450x340

**Teflon Coated
Trays**



Model	External dimensions, mm
PT14	600x400

**Teflon Coated
Perforated Trays**



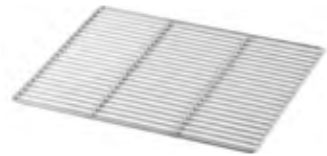
Model	External dimensions, mm
PT15	600x400

**5 Channel
Baguette Trays**



Model	External dimensions, mm
PT10	600x400

**Chrome Plated
Grids**



Model	External dimensions, mm
PG10	600x400
PG11	460x340
PG14	450x340



Contents

126

Cooking Equipment

128

Fast Food Equipment

134

Washing Equipment

136

Bar & Coffee Equipment

COOKING EQUIPMENT



Combi Steamers



Model	TPI 05 D.V	TPI 07 DC.V / TPI 07 DC.5V	TPI 12 DC.V / TPI 12 DC.5V	TPI 20 DC.2V
Trays load	5	7	12	20
Supported trays	GN 1/1	GN 1/1 + 600x400	GN 1/1 + 600x400	GN 1/1
Grid spacing, mm	4*67/ 1*50	67	67	67
Core probe	-	*	*	*
Selfclean	-	*	*	*
Max temperature, °C	260	260	260	260
Fans	2	2	3	4
Fan speeds	1	2 / 5	2 / 5	2
Voltage, V	230/400	400	400	400
Power, kW	7,4	10,8 / 10,6	16,1 / 15,8	28,5
External dimensions, mm	800x700x580	817x780x990	817x780x1340	1051x938x1900
Net weight, kg	60	98 / 98	131 / 128	230



Model	TPI 05 M.V	TPI 07 M.V	TPI 12 M.V	TPI 20 M.1V
Trays load	5	7	12	20
Supported trays	GN 1/1	GN 1/1 + 600x400	GN 1/1 + 600x400	GN 1/1
Grid spacing, mm	4*67/ 1*50	67	67	67
Core probe	-	-	-	-
Selfclean	-	-	-	-
Max temperature, °C	280	280	280	280
Fans	2	2	3	4
Fan speeds	1	1	1	1
Voltage, V	230/400	400	400	400
Power, kW	7,4	10,8	16,1	28,5
External dimensions, mm	800x700x580	817x780x990	817x780x1340	1051x938x1900
Net weight, kg	60	98	131	230

Sous Vide Cookers

Model	TSV2
Power, kW	2
Voltage, V	230
Temperature, °C	10...95
Capacity, l	up to 50
External dimensions, mm	120x145x340
Net weight, kg	3,7



FAST FOOD EQUIPMENT

Doner Kebab Grills

Waffle Makers

Crêpe Makers

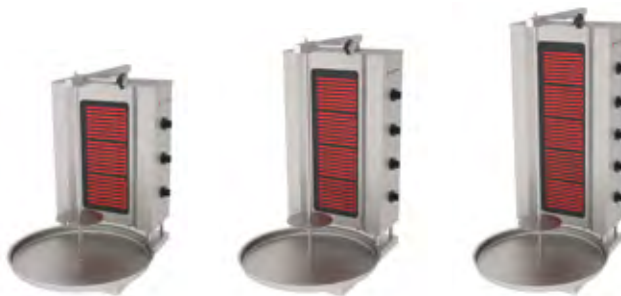
Electric Griddles

Contact Grills



Doner Kebab Grills

Manual



Model	TDM E 3M	TDM E 4M	TDM E 5M
Heating zones	3	4	5
Max load, kg	40	60	80
Power, kW	4,8	6,4	8
Voltage, V	400	400	400
External dimensions, mm	630x750x822	630x750x989	630x750x1156
Net weight, kg	35	40	45



Top motor

Model	TDM E 3T	TDM E 4T	TDM E 5T
Heating zones	3	4	5
Max load, kg	40	60	80
Power, kW	4,8	6,4	8
Voltage, V	400	400	400
External dimensions, mm	630x824x973	630x824x1140	630x824x1307
Net weight, kg	38	43	49



Bottom motor

Model	TDM E 3B / TDM E 3BW	TDM E 4B / TDM E 4BW	TDM E 5B / TDM E 5BW
Heating zones	3	4	5
Max load, kg	40	60	80
Power, kW	4,8	6,4	8
Voltage, V	400	400	400
External dimensions, mm	545x690x951	545x690x1118	545x690x1285
Net weight, kg	45	51	57

* W - Models with heating tray for meat

Contact Grills



Model	TCG 2525 RR	TCG 2525 RS	TCG 2525 SS	TCG 3627 RR	TCG 3627 RS	TCG 3627 SS
Hotplate	top - ribbed bottom - ribbed	top - ribbed bottom - smooth	top - smooth bottom - smooth	top - ribbed bottom - ribbed	top - ribbed bottom - smooth	top - smooth bottom - smooth
Heating zones	1	1	1	1	1	1
Hotplate size, mm	250x250	250x250	250x250	360x270	360x270	360x270
Temperature, °C	50...300	50...300	50...300	50...300	50...300	50...300
Power, kW	1,75	1,75	1,75	2,5	2,5	2,5
Voltage, V	230	230	230	230	230	230
External dimensions, mm	290x440x300	290x440x300	290x440x300	410x500x300	410x500x300	410x500x300
Net weight, kg	18	19	20	27	28	29



* DT - Model with independent temperature control of the top and bottom surface

Model	TCG 4527 RR	TCG 4527 RR DT*	TCG 4527 RS	TCG 4527 RS DT*	TCG 4527 SS
Hotplate	top - ribbed bottom - ribbed	top - ribbed bottom - ribbed	top - ribbed bottom - smooth	top - ribbed bottom - smooth	top - smooth bottom - smooth
Heating zones	1	1	1	1	1
Hotplate size, mm	450x270	450x270	450x270	450x270	450x270
Temperature, °C	50...300	50...300	50...300	50...300	50...300
Power, kW	3	3	3	3	3
Voltage, V	230	230	230	230	230
External dimensions, mm	510x500x300	510x500x300	510x500x300	510x500x300	510x500x300
Net weight, kg	32	32	33	33	35



Model	TCG 3627 RR RR	TCG 3627 RR RS	TCG 3627 RR SS	TCG 3627 RS RS	TCG 3627 SS SS
Hotplate	1 heating zone: top - ribbed bottom - ribbed 2 heating zone: top - ribbed bottom - ribbed	1 heating zone: top - ribbed bottom - ribbed 2 heating zone: top - ribbed bottom - smooth	1 heating zone: top - ribbed bottom - ribbed 2 heating zone: top - smooth bottom - smooth	1 heating zone: top - ribbed bottom - smooth 2 heating zone: top - ribbed bottom - smooth	1 heating zone: top - smooth bottom - smooth 2 heating zone: top - smooth bottom - smooth
Heating zones	2	2	2	2	2
Hotplate size, mm	2 x 360x270	2 x 360x270	2 x 360x270	2 x 360x270	2 x 360x270
Temperature, °C	50...300	50...300	50...300	50...300	50...300
Power, kW	2,5+2,5	2,5+2,5	2,5+2,5	2,5+2,5	2,5+2,5
Voltage, V	230	230	230	230	230
External dimensions, mm	820x500x300	820x500x300	820x500x300	820x500x300	820x500x300
Net weight, kg	55	56	55	59	61



Contact Grills



Model	TCG 5224 R R R+R	TCG 5224 R R R+S	TCG 5224 R R S+S
Hotplate	1 top - ribbed 2 top - ribbed entire bottom - ribbed	1 top - ribbed 2 top - ribbed entire bottom - ribbed+smooth	1 top - ribbed 2 top - ribbed entire bottom - smooth
Heating zones	2	2	2
Bottom hotplate size, mm	520x240	520x240	520x240
Temperature, °C	50...300	50...300	50...300
Power, kW	3,5	3,5	3,5
Voltage, V	230	230	230
External dimensions, mm	560x440x300	560x440x300	560x440x300
Net weight, kg	32	33	34

Electric Griddles



Model	TGP 5224 R	TGP 5224 R+S	TGP 5224 S
Hotplate size, mm	520x240	520x240	520x240
Temperature, °C	50...300	50...300	50...300
Hotplate	ribbed	1/2 ribbed + 1/2 smooth	smooth
Heating zones	2	2	2
Power, kW	2,2	2,2	2,2
Voltage, V	230	230	230
External dimensions, mm	540x350x240	540x350x240	540x350x240
Net weight, kg	17	18	19



Model	TGP 6845 R+S	TGP 6845 S
Hotplate size, mm	680x450	680x450
Temperature, °C	50...300	50...300
Hotplate	1/2 ribbed + 1/2 smooth	smooth
Heating zones	2	2
Power, kW	2,5+2,5	2,5+2,5
Voltage, V	230	230
External dimensions, mm	700x525x210	700x525x210
Net weight, kg	39	38

**Waffle Makers
With Fixed
Plates**



Model	TWI 1 CLASSICO	TWI 2 CLASSICO	TWI 1 AMERICAN	TWI 2 AMERICAN	TWI 1 AMORE
Heating zones	1	2	1	2	1
Temperature, °C	50...300	50...300	50...300	50...300	50...300
Waffle type	classic	classic	round	round	heart
Waffle size	100x170x15	100x170x15	Ø160x15	Ø160x15	Ø210x15
Capacity, waffles	2	4	1	2	1
Power, kW	2,2	2,2 + 2,2	2,2	2,2 + 2,2	2,2
Voltage, V	230	230	230	230	230
External dimensions, mm	290x440x320	580x440x320	300x440x320	600x440x320	300x440x320
Net weight, kg	20	38	16	30	16



Model	TWI 2 AMORE	TWI 1 BRUXELLES	TWI 2 BRUXELLES	TWI 1 GELATO	TWI 2 GELATO
Heating zones	2	1	2	1	2
Temperature, °C	50...300	50...300	50...300	50...300	50...300
Waffle type	heart	Belgian	Belgian	ice cream cone	ice cream cone
Waffle size	Ø210x15	102x165x26	102x165x26	230x230	230x230
Capacity, waffles	2	2	4	1	2
Power, kW	2,2 + 2,2	2,2	2,2 + 2,2	2,2	2,2 + 2,2
Voltage, V	230	230	230	230	230
External dimensions, mm	600x440x320	300x440x320	600x440x320	300x440x320	600x440x320
Net weight, kg	30	21	40	16	30



Model	TWI 1 TIAMO	TWI 2 TIAMO	TWI 1 WAFFELINO	TWI 2 WAFFELINO
Heating zones	1	2	1	2
Temperature, °C	50...300	50...300	50...300	50...300
Waffle type	heart	heart	cone	cone
Waffle size	132x125x24	132x125x24	230x60x24	230x60x24
Capacity, waffles	4	8	3	6
Power, kW	2,2	2,2 + 2,2	2,2	2,2 + 2,2
Voltage, V	230	230	230	230
External dimensions, mm	300x440x320	600x440x320	300x440x320	600x440x320
Net weight, kg	23	44	16	30



Waffle Makers With Removable Plates



Model	TWI 1	TWI 2
Heating zones	1	2
Temperature, °C	50...300	50...300
Power, kW	2,2	2,2+2,2
Voltage, V	230	230
External dimensions, mm	300x440x320	600x440x320
Net weight, kg	12	23

Baking Plates for Waffle Makers



Model	Amore	Bruxelles	Waffelino	Gelato
Waffle type	heart	Belgian	cone	ice cream cone



Model	Amore M	Tiamo	American
Waffle type	heart	heart	round

Crêpe Makers



Model	TCM R 40	TCM S 40	TCM S 40 D
Temperature, °C	50...300	50...300	50...300
Hotplates	1	1	2
Hotplate diameter, mm	400	400	400
Power, kW	3	3	3+3
Voltage, V	230	230	230
External dimensions, mm	400x400x180	450x530x256	900x530x256
Net weight, kg	15	22	41

WASHING EQUIPMENT



Front-Loading Dishwashing Machines

Model	TW.F50+DR	TW.F50+DR+DD
Production capacity, racks/h	60	60
Useful height, mm	380	380
Rack size, mm	500x500	500x500
Cycles, sec	60/90/120/180	60/90/120/180
Water consumption/cycle, l	2,7	2,7
Voltage, V	230/400	230/400
Power, kW	5,2	5,2
External dimensions, mm	585x618x815	585x618x815
Net weight, kg	55	55
CONFIGURATION		
Detergent dispenser	-	*
Rinse aid dispenser	*	*
Drain pump	*	*
Cold water connection	*	*
Tank filters	*	*
Glass rack	*	*
Dish rack	*	*
Cutlery container	*	*



Hood Type Dishwashing Machines

Model	TW.H50+DR	TW.H50+DR+DD
Production capacity, racks/h	60	60
Hood opening, mm	400	400
Rack size, mm	500x500	500x500
Cycles, sec	60/90/120/180	60/90/120/180
Water consumption/cycle, l	3,0	3,0
Voltage, V	400	400
Power, kW	9,7	9,7
External dimensions, mm	690x861x1460 (1910)	690x861x1460 (1910)
Net weight, kg	90	90
CONFIGURATION		
Detergent dispenser	-	*
Rinse aid dispenser	*	*
Drain pump	option	option
Cold water connection	*	*
Tank filters	*	*
Dish rack	*	*
Glass rack	*	*
Cutlery container	*	*



BAR & COFFEE EQUIPMENT



Model	TIM 2104C	TIM 2608C	TIM 3316C
Cooling system	air	air	air
Production capacity, kg/day	21	26	33
Ice bin capacity, kg	4	8	16
Refrigerant	R290	R290	R290
Voltage, V	230	230	230
Power, kW	0,3	0,35	0,47
External dimensions, mm	355x435x590	390x515x640	500x580x690
Net weight, kg	26	32	38



Model	TIM 3716C	TIM 4728C	TIM 5728C
Cooling system	air	air	air
Production capacity, kg/day	37	47	57
Ice bin capacity, kg	16	28	28
Refrigerant	R290	R290	R290
Voltage, V	230	230	230
Power, kW	0,52	0,55	0,55
External dimensions, mm	500x580x690	500x580x800	500x580x800
Net weight, kg	40	45	48



Model	TIM 6640C	TIM 8540C	TIM 9640C
Cooling system	air	air	air
Production capacity, kg/day	66	85	96
Ice bin capacity, kg	40	40	40
Refrigerant	R290	R290	R290
Voltage, V	230	230	230
Power, kW	0,78	1	1,1
External dimensions, mm	738x600x822	738x600x822	738x600x822
Net weight, kg	75	85	88

**Ice Cube Makers
With Front
Ventilation**



Model	TIM 3316CF	TIM 3716CF	TIM 4728CF
Cooling system	air	air	air
Production capacity, kg/day	33	37	47
Ice bin capacity, kg	16	16	28
Refrigerant	R290	R290	R290
Voltage, V	230	230	230
Power, kW	0,51	0,56	0,59
External dimensions, mm	500x580x690	500x580x690	500x580x800
Net weight, kg	38	40	45



Model	TIM 5728CF	TIM 6640CF	TIM 8540CF
Cooling system	air	air	air
Production capacity, kg/day	57	66	85
Ice bin capacity, kg	28	40	40
Refrigerant	R290	R290	R290
Voltage, V	230	230	230
Power, kW	0,59	0,84	1,07
External dimensions, mm	500x580x800	738x600x822	738x600x822
Net weight, kg	48	75	85



**Granulated
Ice Makers**

Model	TIM 8028G	TIM 12040G
Cooling system	air	air
Production capacity, kg/day	80	120
Ice bin capacity, kg	28	40
Refrigerant	R290	R290
Voltage, V	230	230
Power, kW	0,61	1,05
External dimensions, mm	500x680x800	738x700x822
Net weight, kg	45	85



