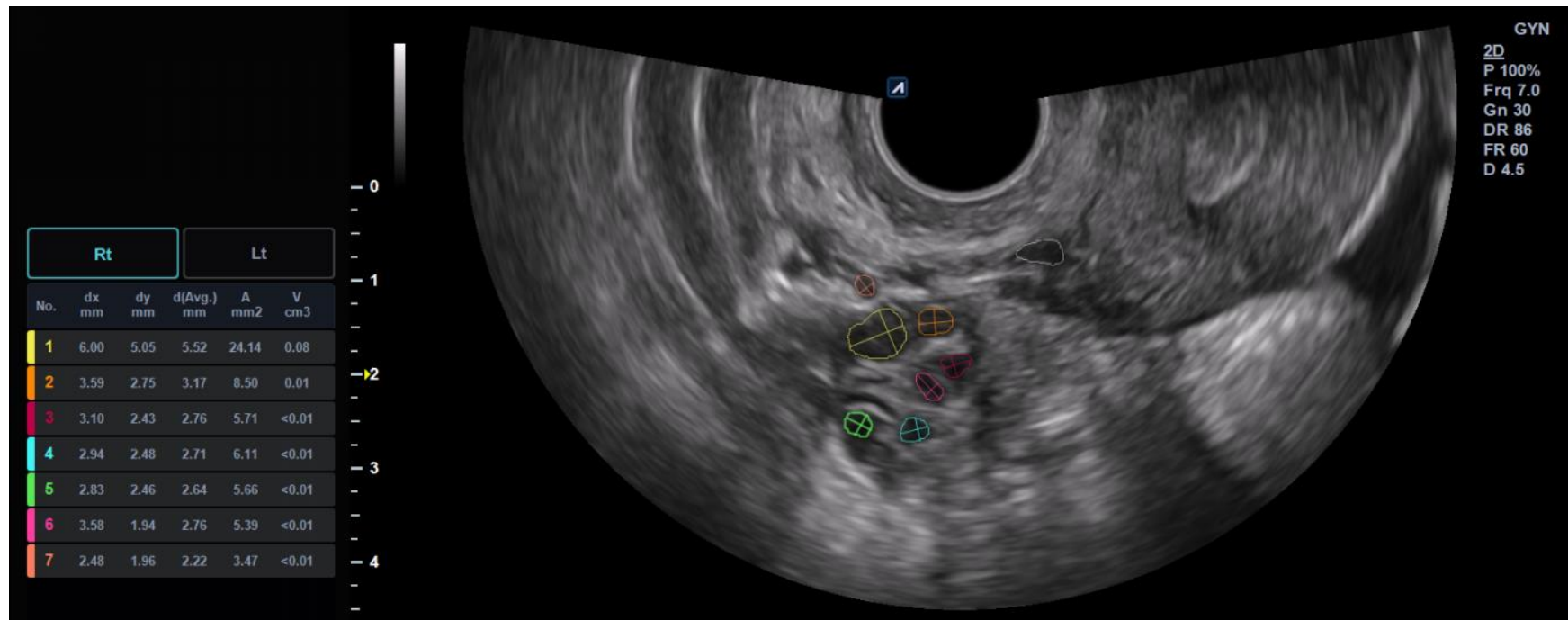
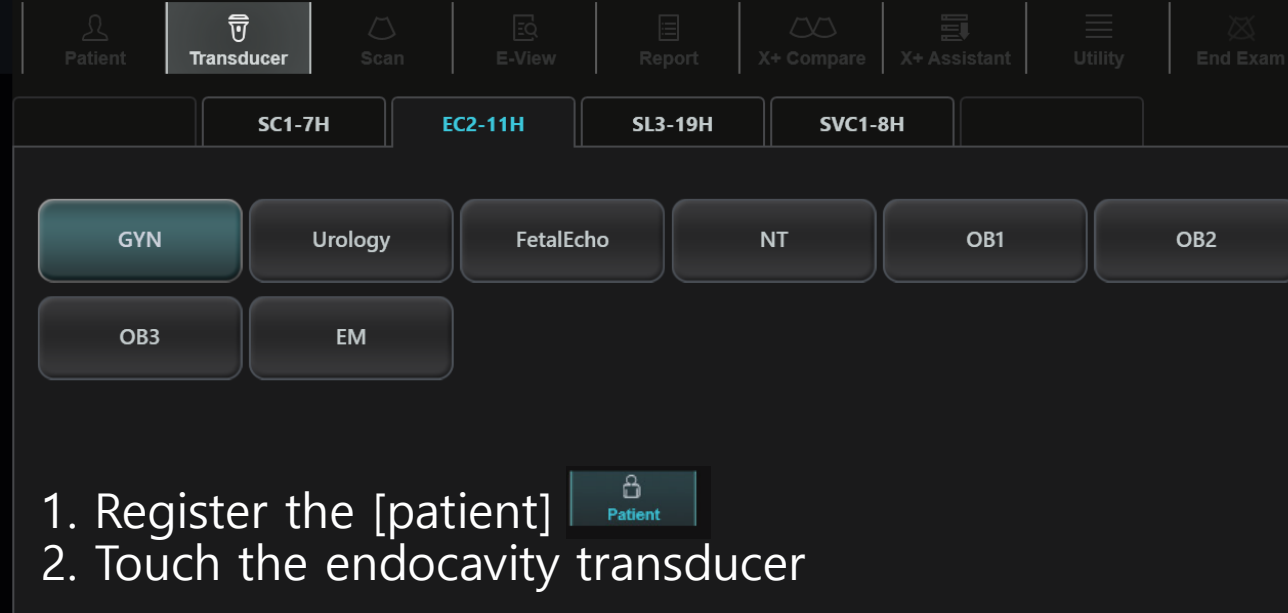


X+ Auto follicle manual

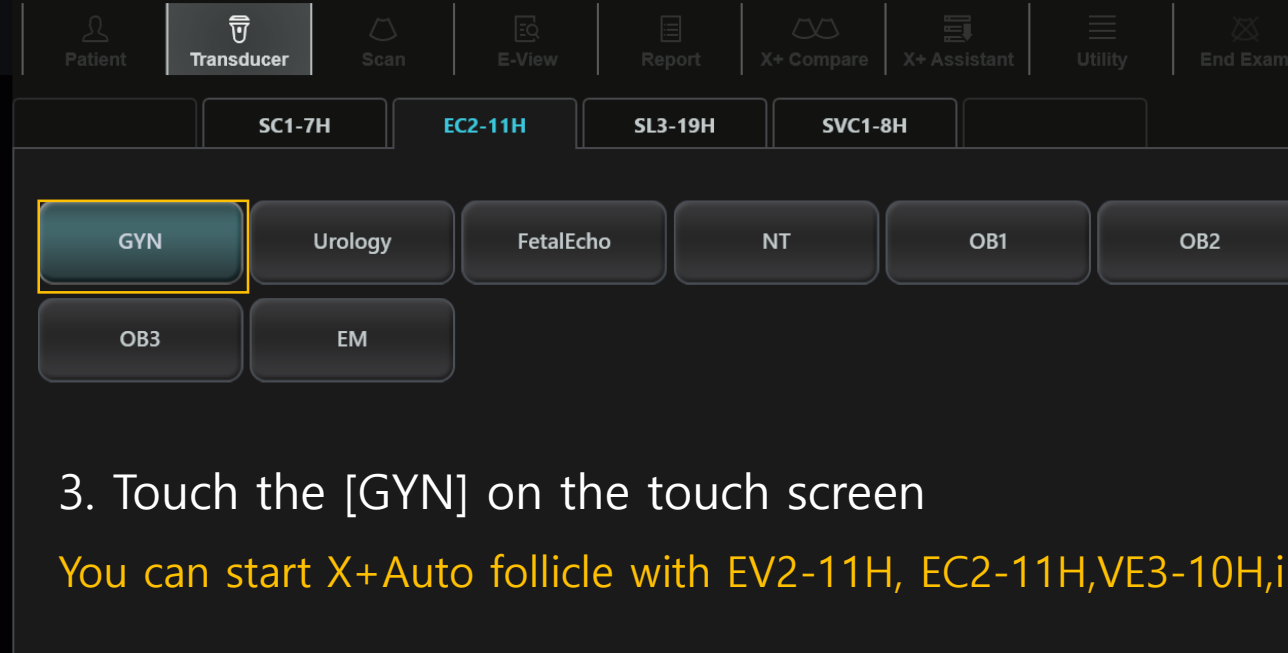
Helps to detect follicle in an ovary and analyze follicular number and size.





The screenshot shows the 'Transducer' menu of a medical device. The top navigation bar includes icons for Patient, Transducer (selected), Scan, E-View, Report, X+ Compare, X+ Assistant, Utility, and End Exam. Below this, there are buttons for SC1-7H, EC2-11H (highlighted in red), SL3-19H, and SVC1-8H. The main area contains a grid of preset buttons: GYN (highlighted in red), Urology, FetalEcho, NT, OB1, OB2, OB3, and EM. A small 'Patient' icon with a lock symbol is visible above the instructions.

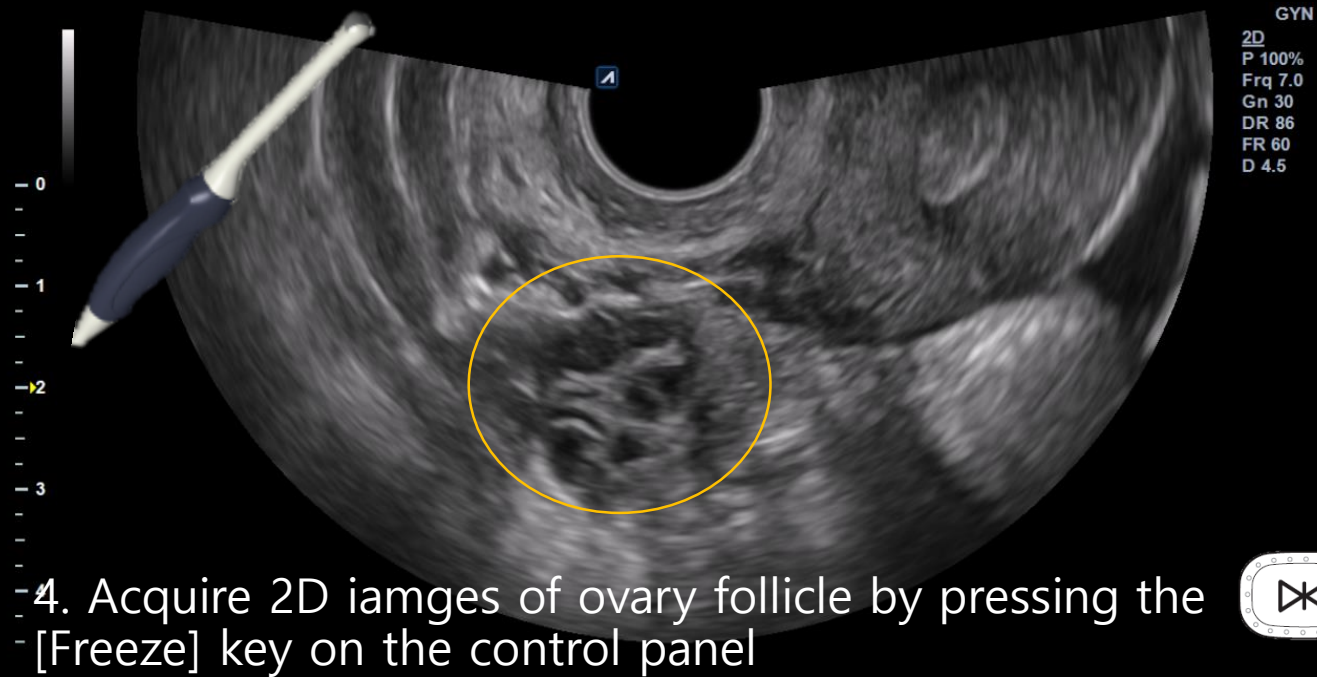
1. Register the [patient]
2. Touch the endocavity transducer



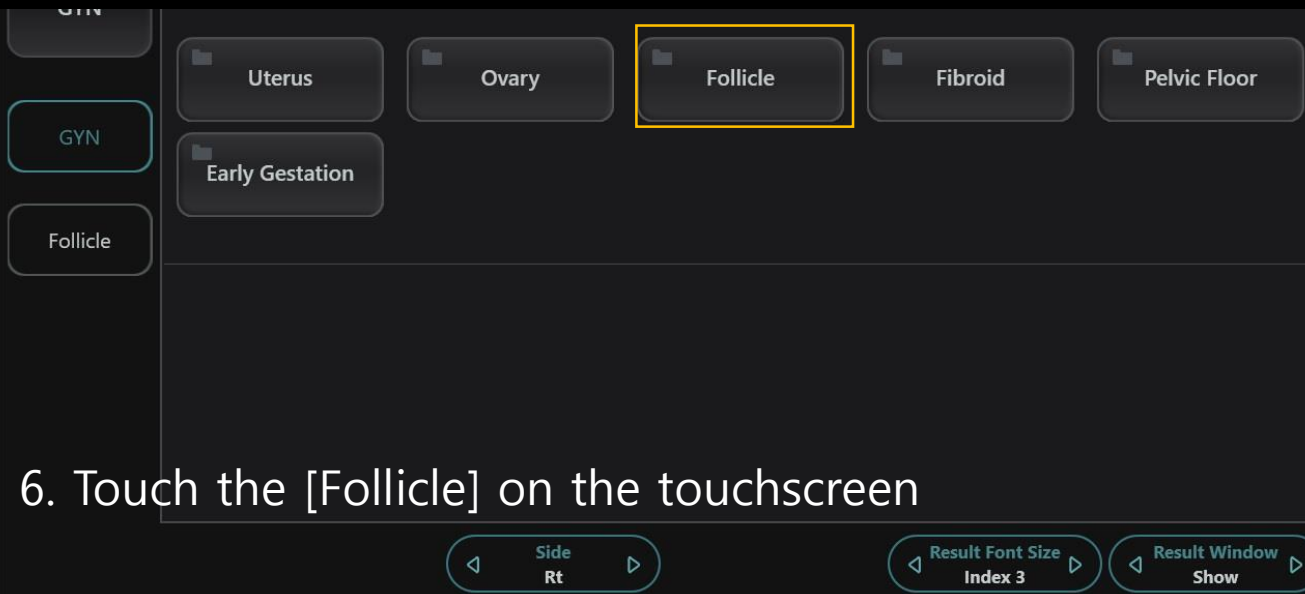
This screenshot shows the same interface as the first one, but with the 'GYN' preset button highlighted by a red rectangle. The 'EC2-11H' button remains highlighted in red in the top bar.

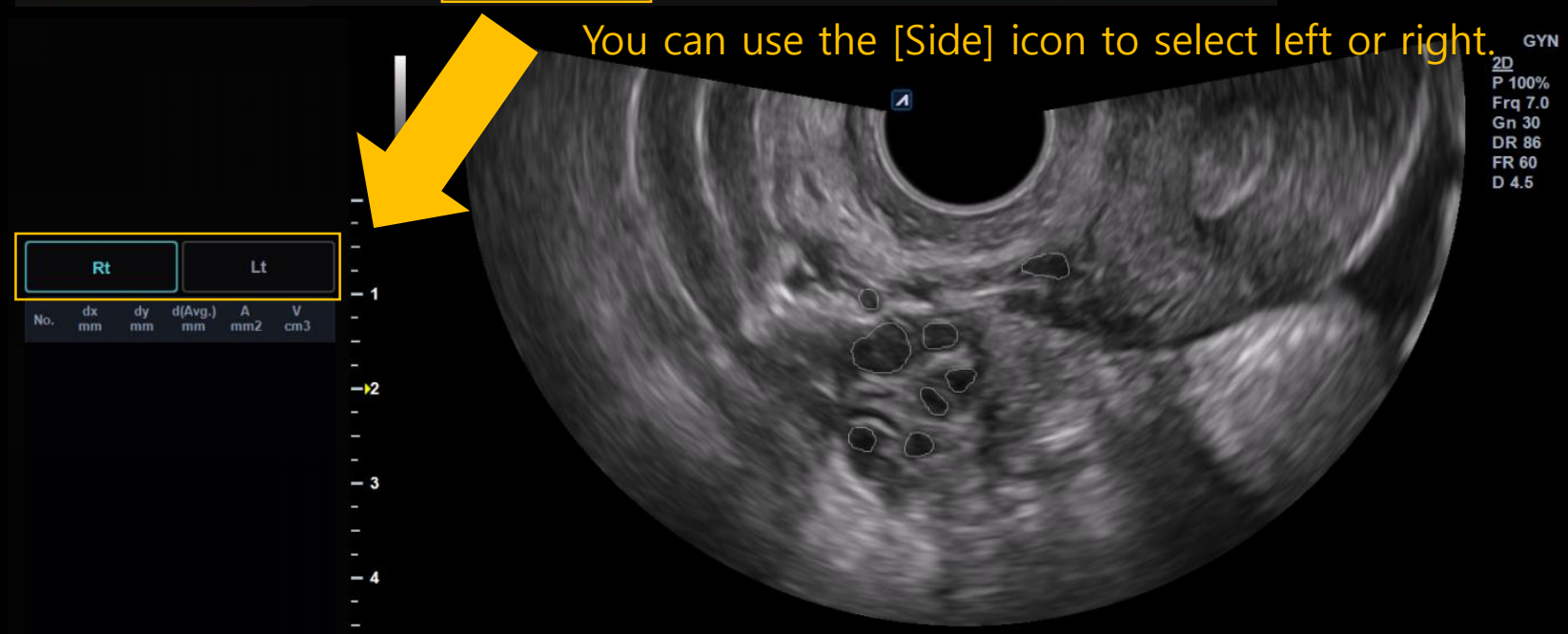
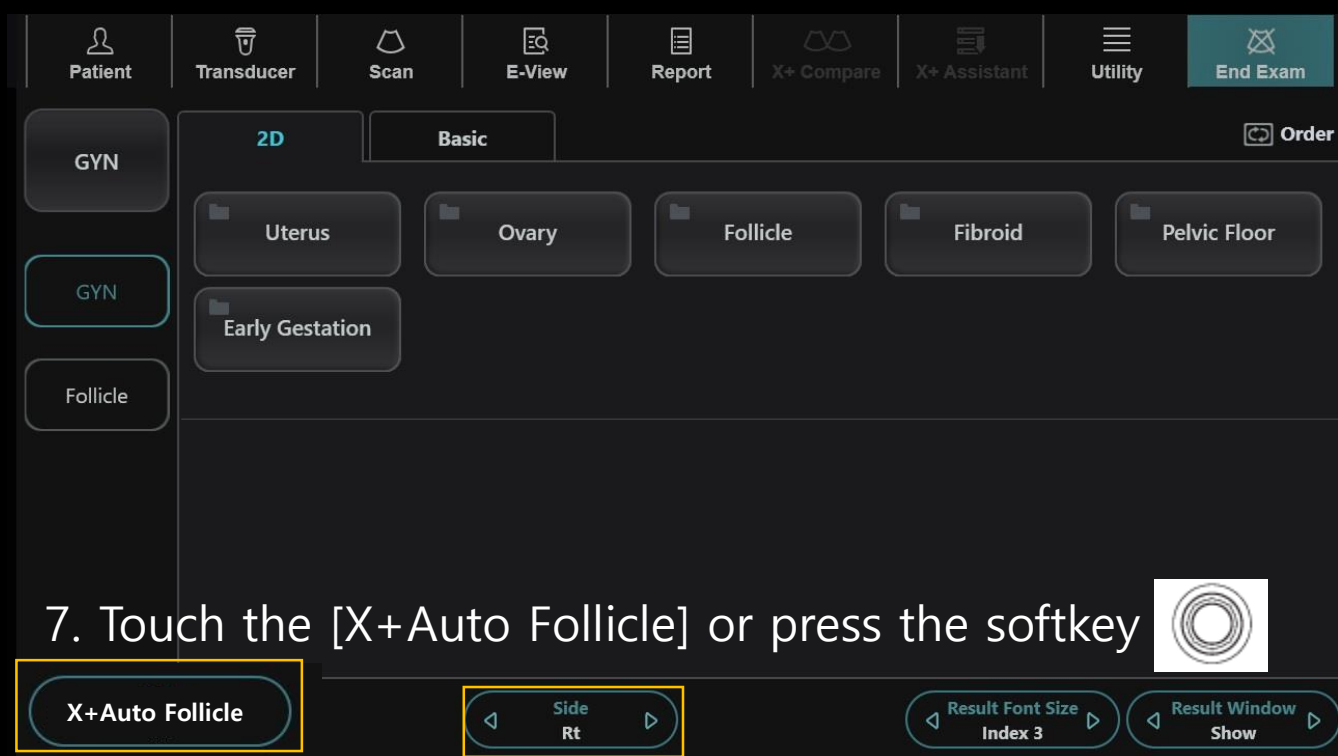
3. Touch the [GYN] on the touch screen

You can start X+Auto follicle with EV2-11H, EC2-11H,VE3-10H,in the GYN preset



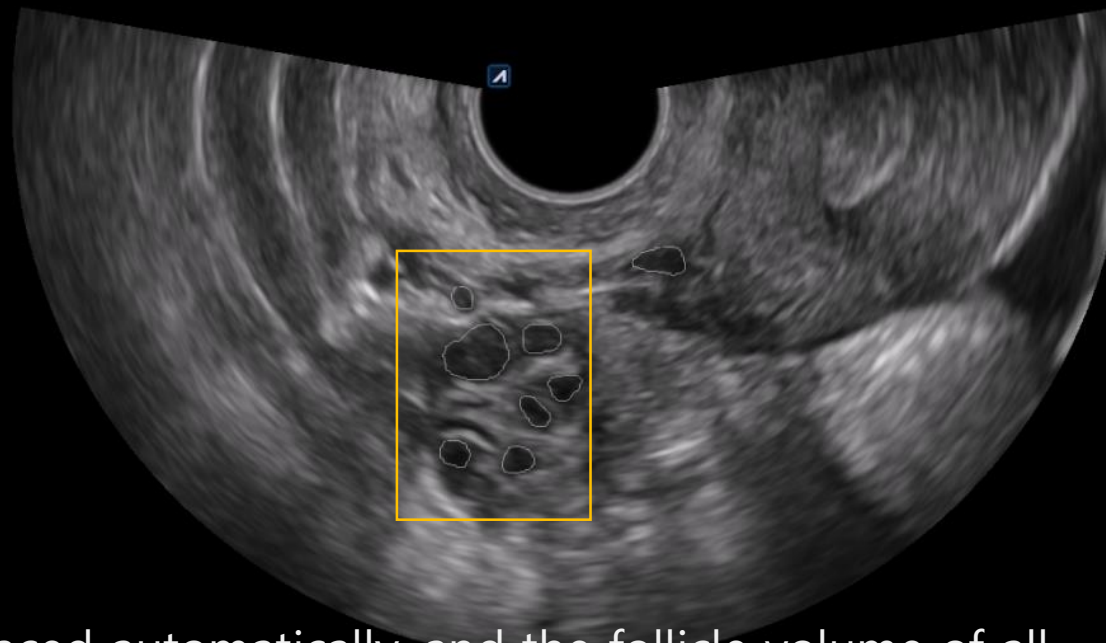
5. Press the [measure] key on the control panel





Rt						Lt					
No.	dx mm	dy mm	d(Avg.) mm	A mm2	V cm3	No.	dx mm	dy mm	d(Avg.) mm	A mm2	V cm3

0
1
2
3
4

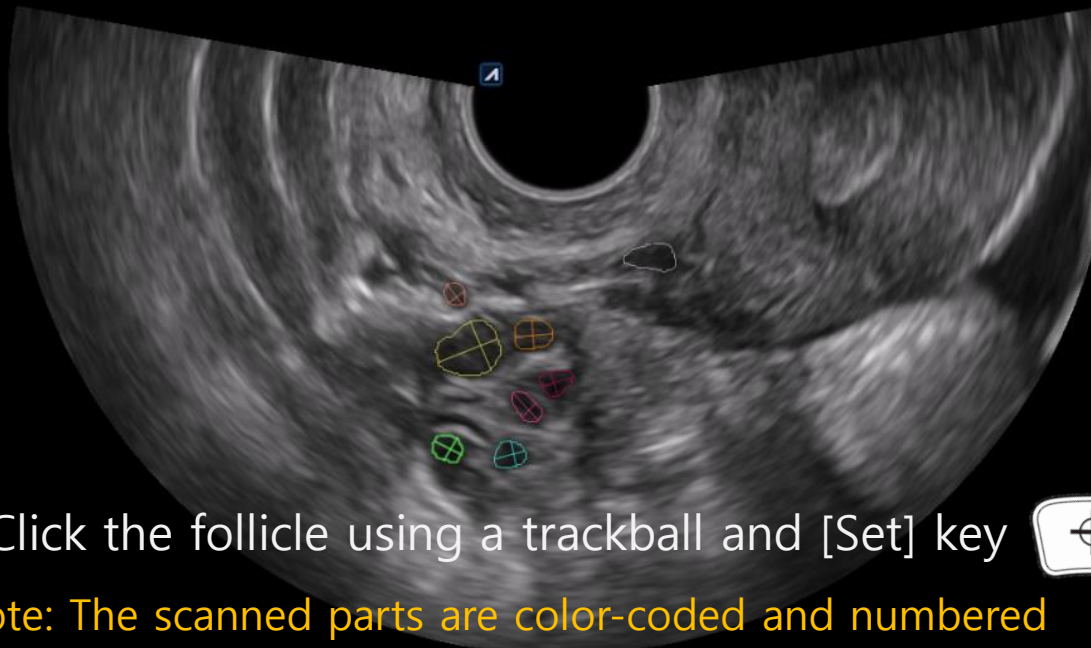


GYN
2D
P 100%
Frq 7.0
Gn 30
DR 86
FR 60
D 4.5

The follicles are traced automatically, and the follicle volume of all follicle are shown on the display.

Rt						Lt					
No.	dx mm	dy mm	d(Avg.) mm	A mm2	V cm3	No.	dx mm	dy mm	d(Avg.) mm	A mm2	V cm3
1	6.00	5.05	5.52	24.14	0.08						
2	3.59	2.75	3.17	8.50	0.01						
3	3.10	2.43	2.76	5.71	<0.01						
4	2.94	2.48	2.71	6.11	<0.01						
5	2.83	2.46	2.64	5.66	<0.01						
6	3.58	1.94	2.76	5.39	<0.01						
7	2.48	1.96	2.22	3.47	<0.01						

0
1
2
3
4

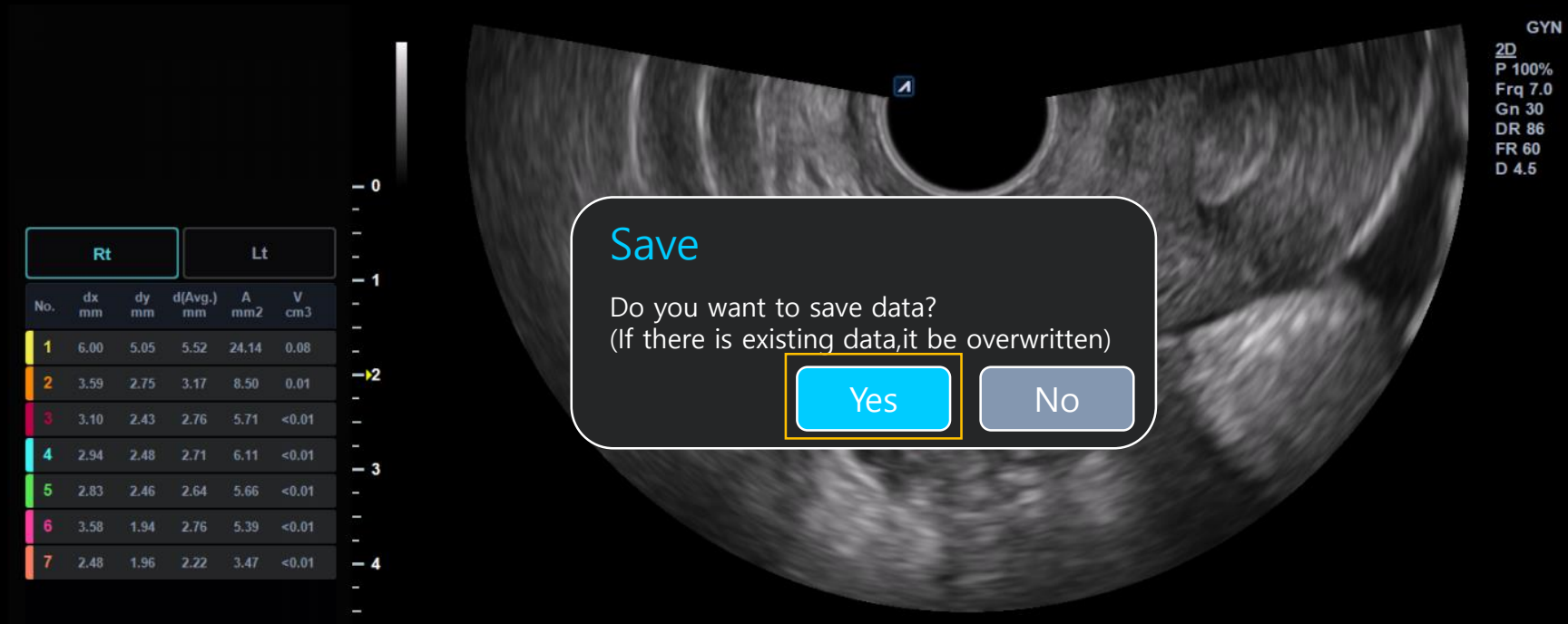


GYN
2D
P 100%
Frq 7.0
Gn 30
DR 86
FR 60
D 4.5

8. Click the follicle using a trackball and [Set] key



Note: The scanned parts are color-coded and numbered



9. Press [Freeze] to save the results.
10. When the save message appears on the display, click [Yes].

X+ Auto follicle Report

Report

1. Touch the [Report] on the touch screen
2. Click the [Follicle] on the display

ALPION

GYN

2D

M

Doppler

All

Report

Basic MEAS.

Preview

Follicle

Exit

Page 1 of 1

ID : Autofollicle

Age :

Exam Date : 09/14/2021

Name :

LMP :

Referring MD :

2D AutoFollicle

No	dx mm	dy mm	d(Avg.) mm	A mm2	V cm3

2D AutoFollicle

No	dx mm	dy mm	d(Avg.) mm	A mm2	V cm3
Rt Auto Follicle					
1	6.00	5.05	5.52	24.14	0.08
2	3.59	2.75	3.17	8.50	0.01
3	3.10	2.43	2.76	5.71	<0.01
4	2.94	2.48	2.71	6.11	<0.01
5	2.83	2.46	2.64	5.66	<0.01
6	3.58	1.94	2.76	5.39	<0.01
7	2.48	1.96	2.22	3.47	<0.01

Edit the report

ALPION

GYN

2D

M

Doppler

All

Report

Basic MEAS.

Preview

Follicle

Exit

Page 1 of 1

ID : AutofollicleAge :Exam Date : 09/14/2021

Name :LMP :Referring MD :

2D AutoFollicle

No	dx mm	dy mm	d(Avg.) mm	A mm2	V cm3

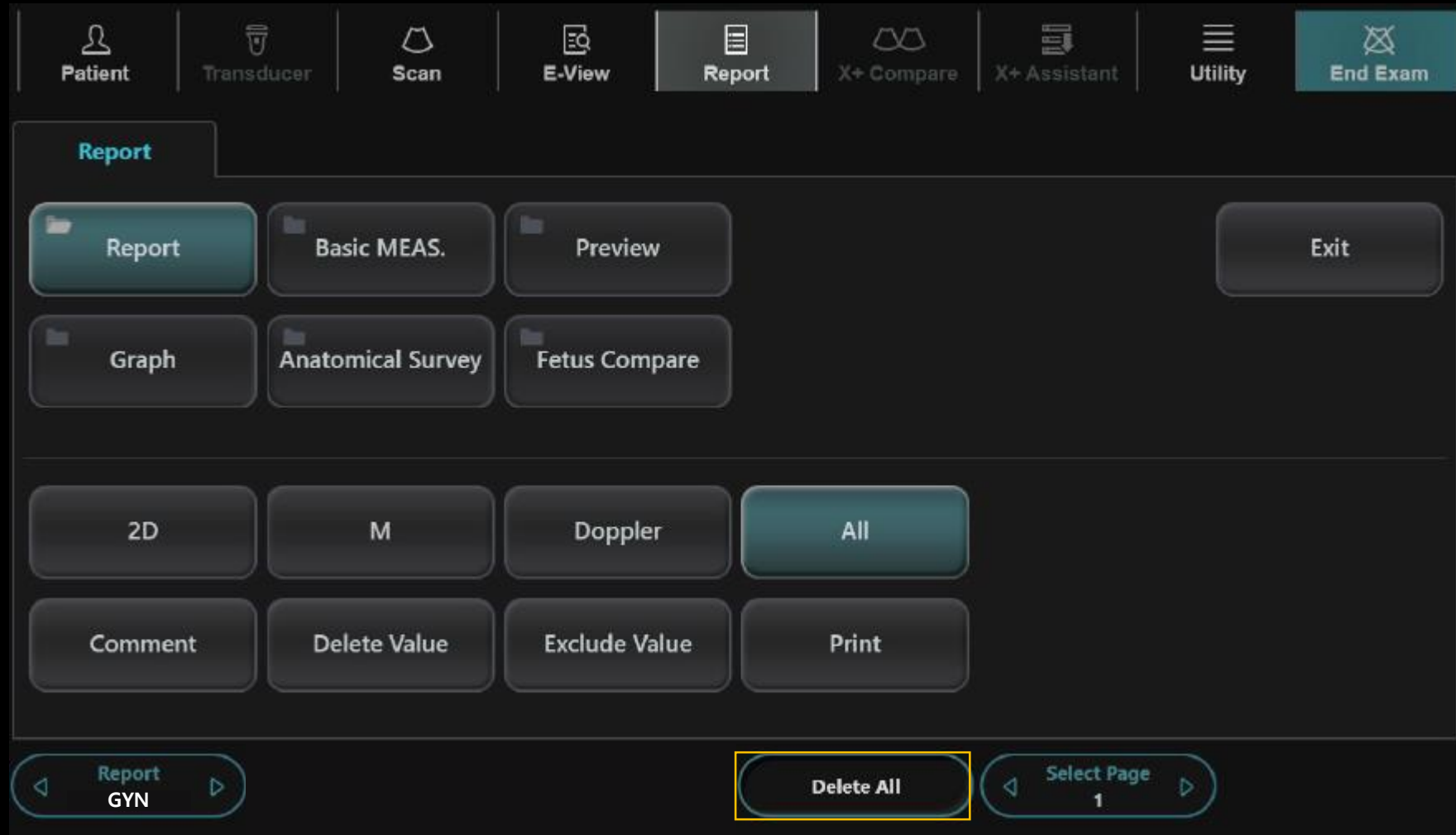
2D AutoFollicle

No	dx mm	dy mm	d(Avg.) mm	A mm2	V cm3
Rt Auto Follicle					
1	6.00		5.52	24.14	0.08
2	3.59	2.75	3.17	8.50	0.01
3	3.10	2.43	2.76	5.71	<0.01
4	2.94	2.48	2.71	6.11	<0.01
5	2.83	2.46	2.64	5.66	<0.01
6	3.58	1.94	2.76	5.39	<0.01
7	2.48	1.96	2.22	3.47	<0.01

Click a number and enter a new value to edit the value.

When the value changes, the number changes to blue and an asterisk appears.

Edit the report



Delete

Do you want to delete? (All mode)

Yes

No

Cancel

1. Press [Delete All] to delete all measurement values from the report
2. When the delete message appears on the display, click [Yes].

Delete message