



K4 SERIES

NOTE: This picture belongs to a machine Stage V engine. The exterior design of the machine with stage 3A engine is different than this.

NEW!

ENGINE

Brand, Model	WEICHAH WP4.1G110E311
Number of cylinders	4
Max. Power	110 HP (82 kW) @ 2200 rpm
Max. Torque	460 Nm @ 1400-1600 rpm
Displacement	4.088 cc
Bore & Stroke	∅ 105 x 118 mm
Emission Class	Stage IIIA / Tier 3 (EU/EPA)

High power and torque output, turbocharged diesel engine.

AXLES

- Heavy duty service type axles
- Planetary outboard type reduction
- Total 16 degrees oscillation on the front axle
- Torque proportional type front axle differential

CAB&HOOD

- Widened visual angle
- Ergonomic & Aesthetic Interior Design
- High capacity A/C system
- Improved ventilating with 17 air nozzles
- Cool-box (with A/C system)
- ROPS and FOPS certificated cab
- 4.3" TFT display on front and on rear side panel
- Pool type floor mats
- Mechanical lever control
- TIPSHIFT (FNR) function
- RTD (Return to dig)
- Multi purpose bucket with proposal control
- Autotilt steering wheel
- Loader boom lock
- Double brake system
- Storage boxes
- Foldable side steps
- Phone and cup holder
- Interior led lights
- MP3 radio
- Bluetooth
- USB charging ports
- Openable cooling package
- Smartlink (option)

HYDRAULIC SYSTEM

Simple, reliable and high efficient tandem gear pump

Main pump flow	90 L/min @2200 rpm
Pressure	255 bar
Auxiliary pump flow	57,2 L/min @2200 rpm
Pressure	170 bar

DRIVING SPEED

1 st gear	7	km/h
2 nd gear	11	km/h
3 rd gear	23	km/h
4 th gear	40	km/h

TRANSMISSION

- Powershift Semi-automatic transmission for heavy duty service
- Torque converter with 2,38:1 stall ratio
- Electrically controlled 2 Wheel drive or 4 Wheel Drive selection
- 4 forward, 4 reverse gears
- Transmission oil cooler
- A neutral circuit allows starting only when the control lever is in neutral position for safety.

TIRES

Front	16/70 - 20 12 Ply Rating
Rear	16,9 - 28 14 Ply Rating (Optional : 18,4- 26 12 Ply Rating)

FILLING CAPACITIES

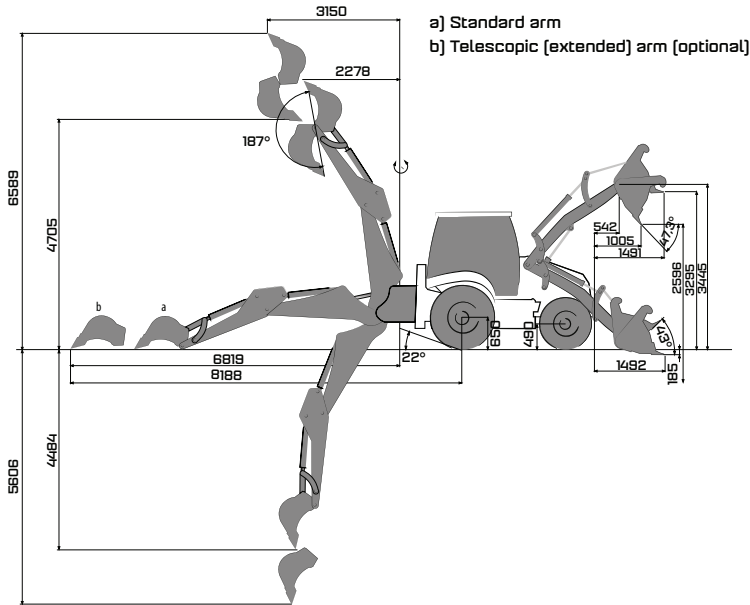
Engine cooling system	18,5 L
Fuel Tank	140 L
Hydraulic oil tank	70 L
Transmission oil	19,5 L

OPERATING WEIGHT

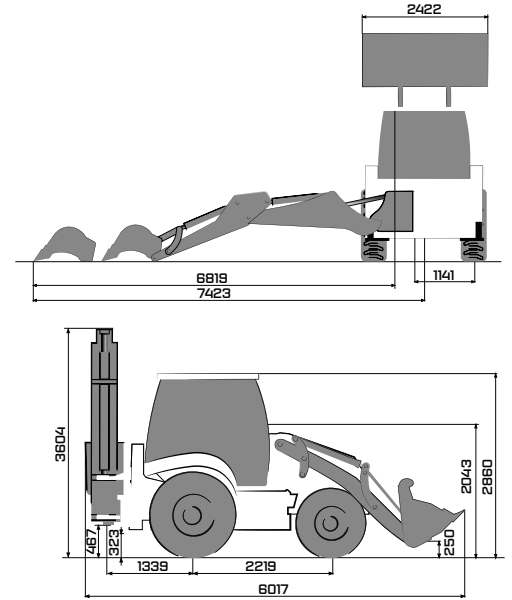
Operating weight with standard equipment : 8940 kg

Operational weight, complying with the ISO 6016 standards, includes full fuel tank, hydraulic system and other liquids, 75 kg operator weight and standard equipped machine weight. Optional equipments are not included.

HMK102BK4



a) Standard arm
b) Telescopic [extended] arm [optional]



LOADER PERFORMANCE

6 in 1 bucket capacity	11 m ³
Max. bucket breakout force	7380 kgf
Max. loading arm breakout force	7380 kgf
Lifting capacity to max. height	3660 kg

BACKHOE PERFORMANCE

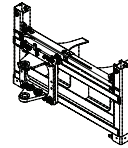
	Standard arm	Telescopic arm extended	Telescopic arm retracted
Bucket capacity		0.18 m ³	
Max. bucket breakout force	6865 kgf	7020 kgf	7020 kgf
Max. arm breakout force	3290 kgf	2230 kgf	3160 kgf



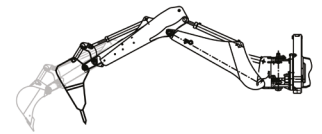
Air conditioner



MSS (Motion Stabilizer System)



Powerslide



Hydraulic breaker inst. + Telescopic arm

OPTIONAL ATTACHMENTS



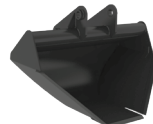
Snow blade



Timber grab



General purpose bucket



Trapezoidal ditch bucket



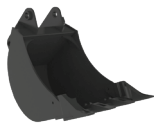
Ripper



Tilting bucket



Clamshell grab



Backhoe bucket of different sizes



Hydraulic breaker



Auger



Fork arms with quick coupler



Fork arms, for quick couple mechanism

HIDROMEK®

FACTORY - HEAD OFFICE

Ahi Evran OSB Mahallesi Osmanlı Caddesi No:1 06935 Sincan / ANKARA / TÜRKİYE
Tel: (+90) 312 267 12 60 Fax: (+90) 312 267 12 39
www.hidromek.com

Notice:
Hidromek has the right to modify the specifications and design of the model indicated on this brochure without prior notice.

А МЕТАЛЛ 42-12-76





HIDROMEK
SERVICE AUTORIZAT

ДОСКА МЕТАЛЛ 42-12-76

102B

DROMEK

40











73 dB

0830

HYDRA CENTER

1

15