

Canon



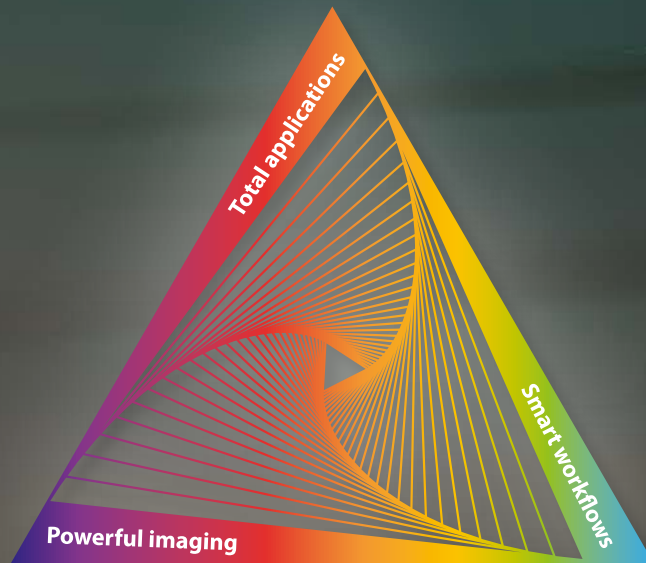
Aplio i700

Prism Edition

Light your day.
Color your world.

General imaging

See ultrasound imaging in a new light



Intelligent healthcare made easy

Aplio i700 offers a range of flexible, AI-assisted productivity features to help you optimize your workflow, diagnostic performance and imaging consistency.



A whole new experience

With new insights come new opportunities. Aplio i700 / Prism Edition is a trusted premium ultrasound system with powerful imaging, quantification and advanced analysis capabilities for a wide range of clinical specialties. Its particular strength is the consistent, robust performance and efficiency across a comprehensive range of clinical applications.

A complete, customizable solution for every clinical need

Aplio allows me to take clinical confidence to a whole new level



Aplio provides signature imaging quality and robustness for a wide range of clinical applications.

Smart imaging technology further enhances clarity, depth and detail.

Next-generation Superb Micro-vascular Imaging (SMI) depicts fine flow with strongly reduced clutter and free breathing.

Ultra Wide View offers an extended field of view without sacrificing image quality or frame rate.



Aplio excels in performance and efficiency for any clinical task



With a variety of clinically proven imaging and quantification tools, Aplio puts you at the forefront of diagnostic imaging and research.

Aplio provides you with a comprehensive suite of advanced tools to plan, guide and follow up image-guided interventions.

As a high-performance, multipurpose system, Aplio enables multidisciplinary patient assessment from a single source.



Make it yours

Aplio is a complete multipurpose solution that allows you to customize features and functions to exactly meet your needs. With Canon's FleXstyle technology you can configure the user interface to how you want to work.

Aplio's flexibility allows me to create an efficient and comfortable workplace



The carefully redesigned user interface enables a short learning curve for enhanced confidence and productivity.

Improved automation and standardization make your exams faster and more efficient. Even complex tasks are straightforward and easy to complete.

With the flexible console you can create an ergonomic workplace to always work in the magic triangle.*

Abdominal imaging

Optimal results in every case

With Aplio i-series/Prism Edition you can improve your diagnostic confidence and clinical capability to optimize your patients' clinical pathway regardless of their condition. The system's extensive suite of advanced imaging and quantification capabilities enables early detection and reliable characterization of lesions, helping you get clear answers swiftly and reliably.



Consistently high image quality across all depths and patient conditions is one of the key features of Aplio enabling quick and reliable diagnoses.

An extensive suite of advanced imaging and quantification functions can help you get definite answers rapidly and with confidence.

Easy-to-use imaging fusion technology can help you identify and compare lesions and navigate complex anatomy securely with minimal user interaction.



Aplio i-series' new linear matrix transducer offers excellent imaging and versatility, particularly for intestinal imaging.

Liver tools

Take a holistic view of your patients

Aplio provides clinically validated, non-invasive tools to assess and quantify the full spectrum of liver disease, providing easy-to-understand clinical reports and guidance in both visual and quantitative formats.

Early detection

The superior quality of imaging and contrast resolution that Aplio can offer is a fundamental requirement for the early detection of pathologies.

Non-invasive staging

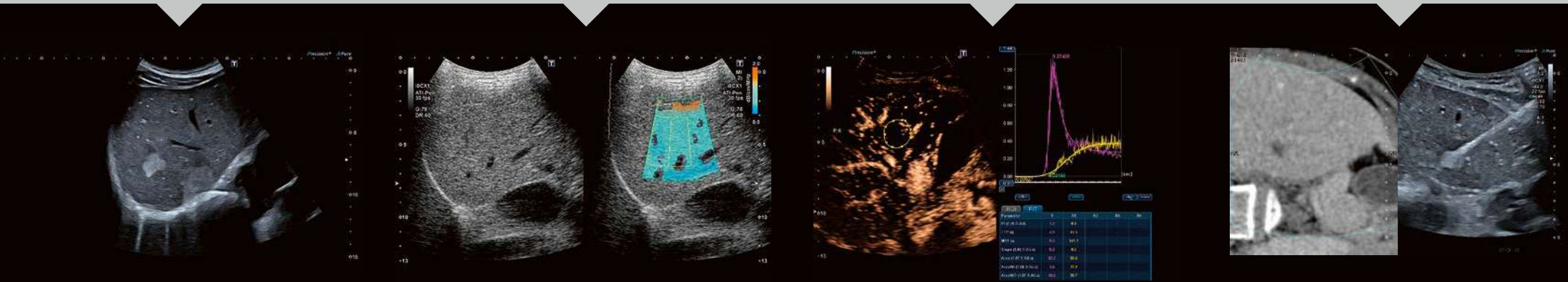
Aplio's clinically proven screening and analysis tools are designed for ultrasound-based imaging and quantitative assessment in the daily routine.

Clinically proven quantification

Verified by clinical studies, Aplio's wide range of quantification tools are safe and efficient for disease staging and treatment follow-up.

Sophisticated intervention

Aplio's dedicated transducers, imaging and navigation tools help you enhance confidence and accuracy during interventional procedures and in their follow-up.





Precise follow-up

In combination with the system's onboard reporting, Aplio offers a wide range of quantification tools and the ability to directly compare with previous exams for reliable follow-up.

Multi Parametric Reporting

Aplio can combine the results of ultrasound and external exams into a single report for a more complete understanding of the disease status.



High-frequency imaging

Higher, further, faster

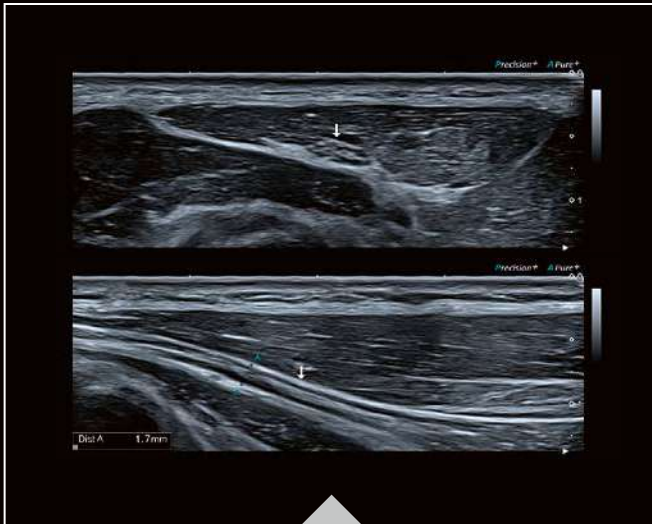
In combination with the new iBeam+ architecture, Aplio's standard and specialized broadband transducers with up to 33 MHz and intelligent Dynamic Micro-Slice (iDMS) technology offer outstanding detail and resolution with significantly expanded depth for a wide range of specialized examinations.



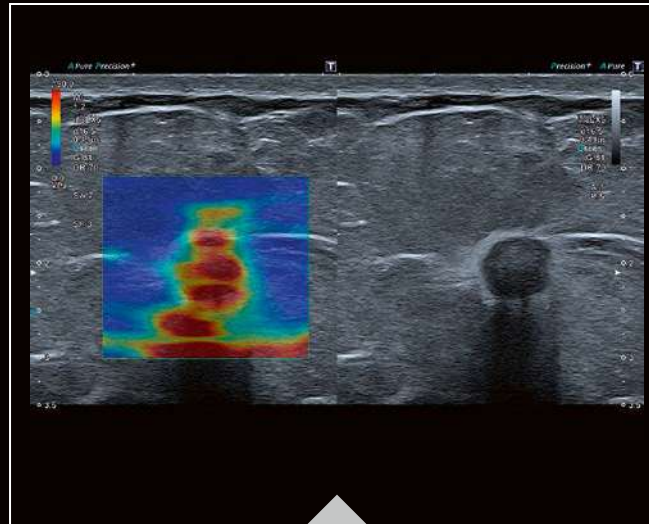
Wideband
Hockeystick i22LH8



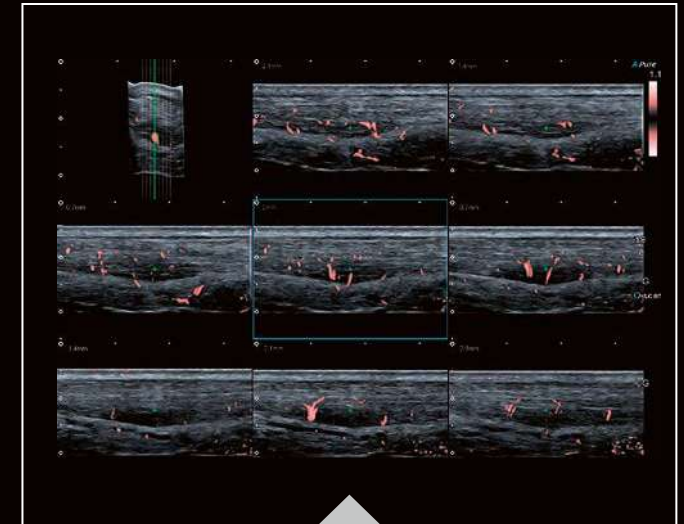
Wideband
Linear i24LX8



The ultra-high imaging resolution of Aplio can help you identify and examine fine details such as layered structures and small lesions with sub-millimeter precision.



Advanced technologies such as Shear Wave Elastography (SWE) or SMI are available on many special transducers to enable the quantitative assessment of inflammation in small joints, tendons or ligaments.



Smart 3D is a simple way to add volume-imaging capability to Aplio's convex and linear transducers, supporting all modes including SMI or SWE.

Pediatric imaging

Big performance for small patients

Unspecific abdominal pain, congenital malformations, developmental disorders or juvenile obesity – pediatric ultrasound covers a wide range of clinical targets and age groups. An early and precise diagnosis can be of decisive importance for the quality and health of your young patients' entire subsequent life. Aplio offers many specialized transducers and imaging tools to help you meet these challenges from newborns to adolescents with consistently high quality, efficiency and diagnostic reliability.



Dedicated transducers with small footprint and iDMS technology allow for unrestricted access and finely resolved B-mode images for all patients.

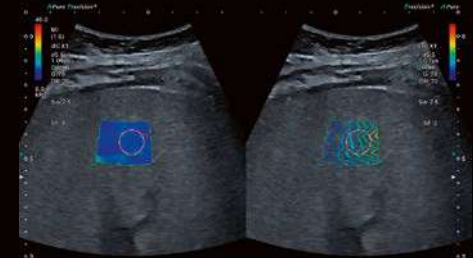
Advanced Dynamic Flow (ADF) provides a highly sensitive and differentiated representation of fine blood flow while eliminating unwanted motion artifacts.

In neonates, all major anatomies can be observed with a single probe – simply by selecting the appropriate imaging preset.

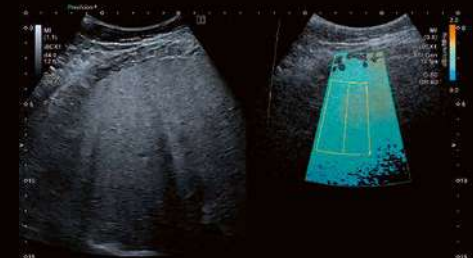


Screening and prevention

Overweight and obesity are increasing health risk factors also in children. Aplo's liver analysis package allows you to get a complete liver status in just a few minutes during routine exams – a great tool for screening and early prevention.



Fibrosis assessment (Shear Wave Elastography)



Liver fat quantification (Attenuation Imaging)



Multi Parametric Report with liver status graph

Obstetric imaging

Superior performance means more confidence

Small, lightweight transducers with high image quality enable easier, faster work and high diagnostic reliability at the same time.



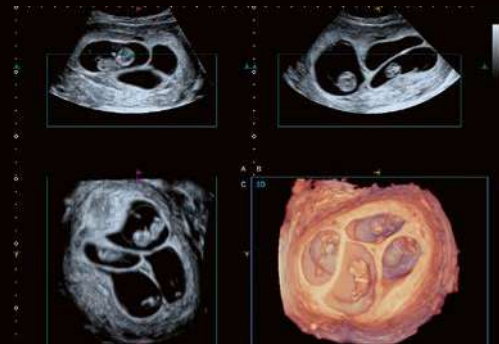
Early detection of fetal abnormalities is crucial for efficient and safe decision-making as early as possible. Canon's advanced transducer and beamforming technology provides high-quality imaging with unprecedented detail and clarity at every step of fetal development. While Aplio's dedicated Women's Health Edition lets you focus on the tools you need, upgrading is easy as your diagnostic scope expands.



Outstandingly detailed images with increased contrast, enhanced uniformity and reduced speckle noise help you improve visualization even in the early stages of fetal development.



With unsurpassed resolution and level of detail, SMI and Doppler Luminance are ideally suited for the precise visualization of flow in the fetal heart, lungs, brain and abdomen.



High-quality, high-resolution volumetric imaging can help evaluate complex anatomy through efficient segmentation, realistic 3D rendering, and assessment from multiple angles.



powered by  **Altivity**



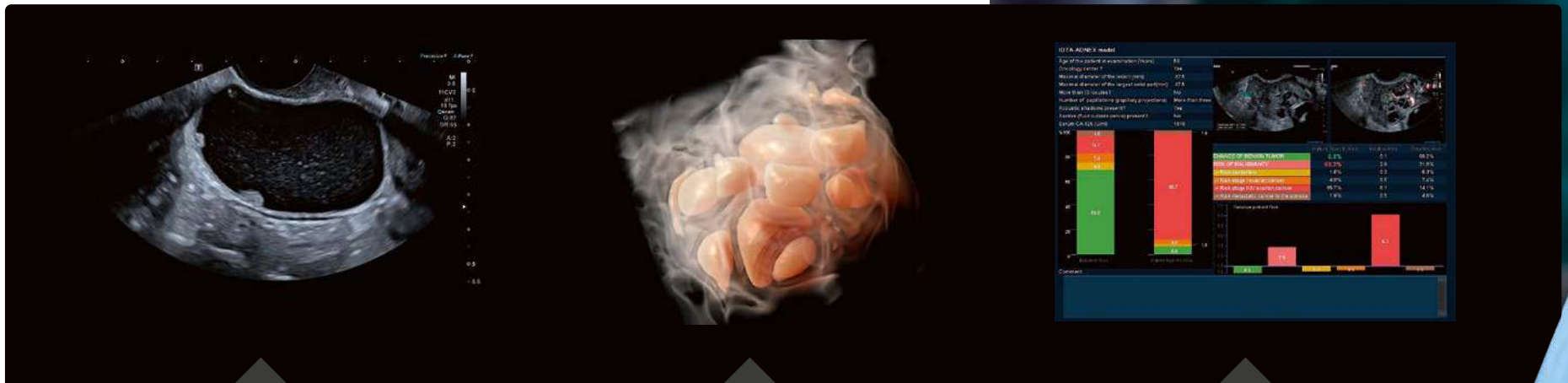
Fetus A
GA EDD: 22w2d
F1 50.3mm (Hadlock) 30%tile

Aplio i700 can help you simplify and streamline repetitive tasks such as performing growth measurements with the AI-assisted automatic detection of standard scan planes and automated measurements.

Gynecological ultrasound

Meet diverse requirements with consistent quality

The multidisciplinary origins of Canon's ultrasound portfolio provide a wider range of diagnostic capabilities while delivering high performance and image quality. Innovative technologies can help make the process faster, more reliable and less invasive for the patient.



Consistently high image quality makes the Women's Health range particularly valuable when comprehensive examinations are required.

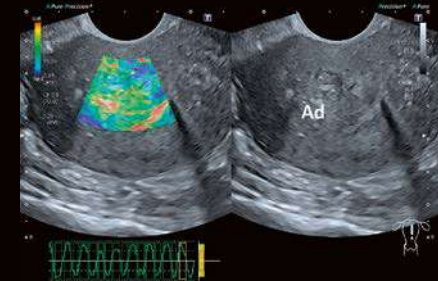
Aplio provides a wealth of tools to improve visualization of complex anatomy in 2D and 3D, also in combination with advanced modes like Shadow Glass, SMI or elastography.

Aplio supports evidence-based reporting and classification in accordance with IOTA and RADS™ standards to simplify exams while increasing accuracy and efficiency for the user.

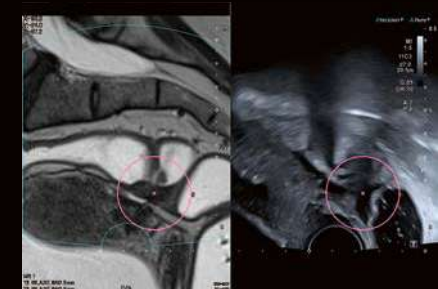


Advanced tools for more detailed insights

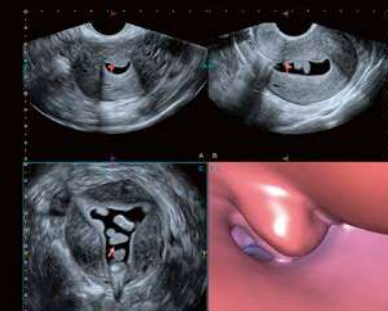
Aplio's extensive suite of advanced imaging and quantification functions can help you obtain definite answers quickly and with confidence.



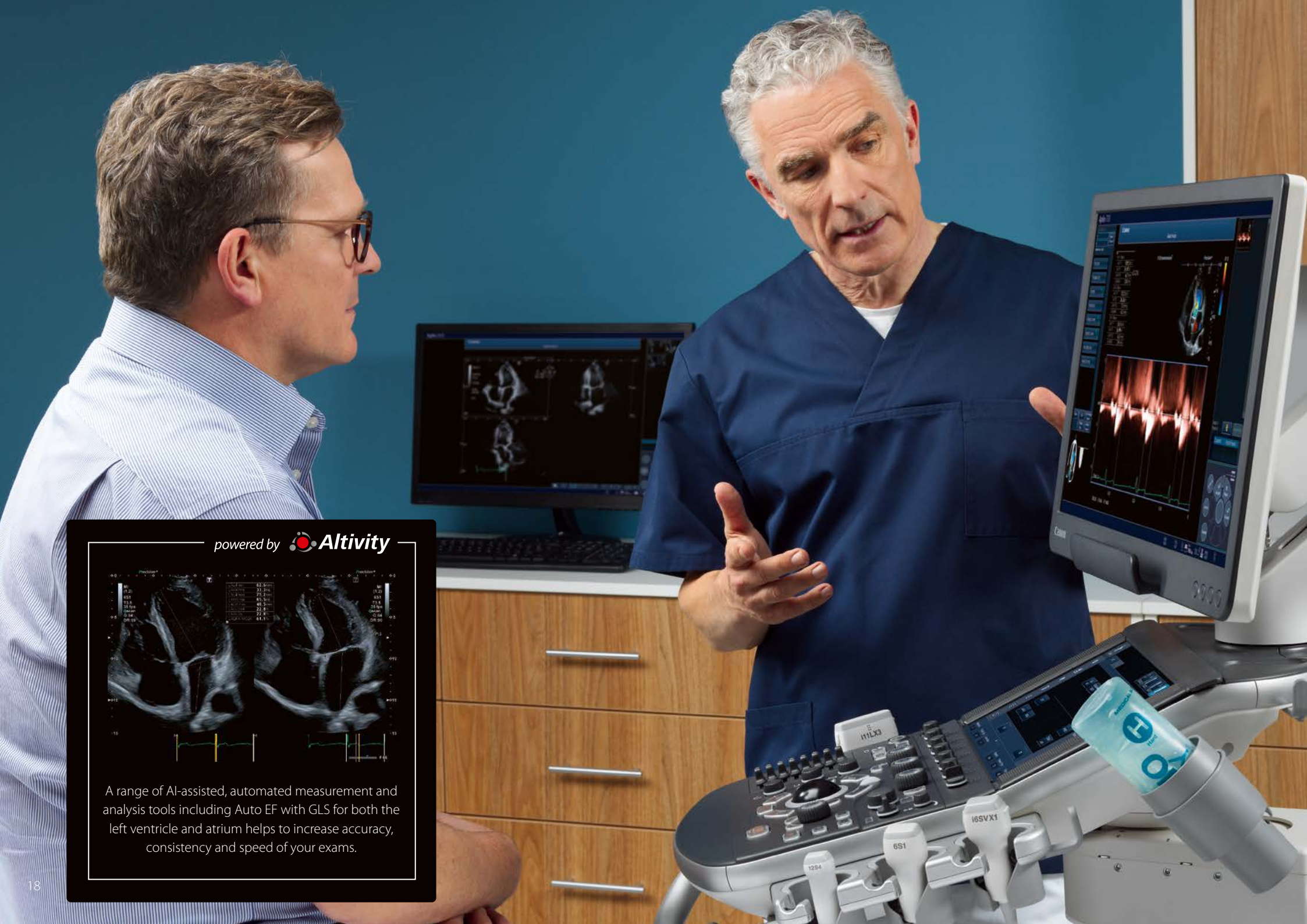
Elastography



Smart Fusion



Virtual hysteroscopy with FlyThru



powered by  **Altiivity**



A range of AI-assisted, automated measurement and analysis tools including Auto EF with GLS for both the left ventricle and atrium helps to increase accuracy, consistency and speed of your exams.

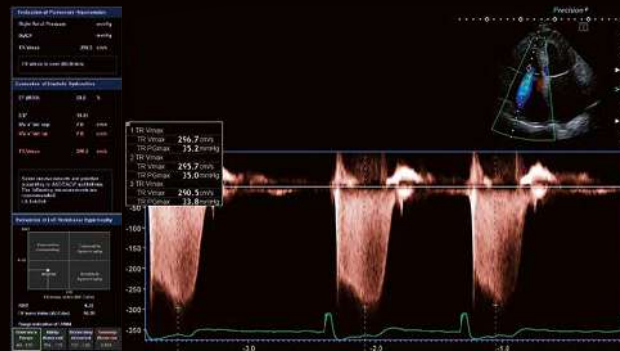
Cardiac imaging

Making echo easier, faster and more reliable

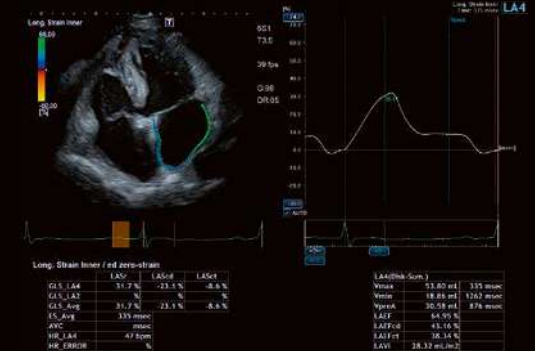
Steadily increasing patient volumes, complex exam protocols and more difficult patients, increasing obesity – do these challenges sound familiar? Aplio i-series helps you achieve faster, more consistent results with its sophisticated automation tools, AI-assisted measurements and optimized imaging for larger patients.



Aplio offers exceptionally high image resolution and contrast for a fast, safe and efficient visual and quantitative assessment of the heart, for both transthoracic and transesophageal examinations.



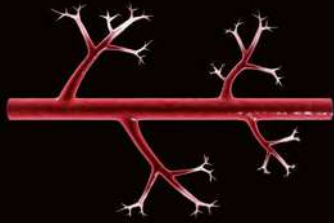
The system's built-in workflow navigator provides ASE-compliant step-by-step guidance through your workflow with a clear, easy-to-read menu, ensuring exams are performed and documented consistently.



Aplio i700 offers a full range of advanced quantification options including stress echo, Wall Motion Tracking in all four cavities, as well as the ability to upgrade to 3D/4D imaging including 4D TEE.

Seeing the unseen – next generation

Canon's unique SMI technology with extended velocity range can cover a wide spectrum of applications from visualizing blood flow in the main arteries down to neovascularization in plaques.



Ultra-low flow imaging



Ultra-high resolution

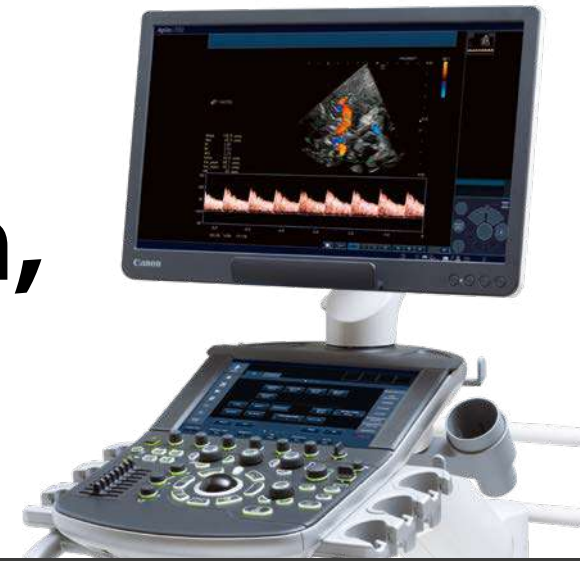


Free-breathing capability



Vascular imaging

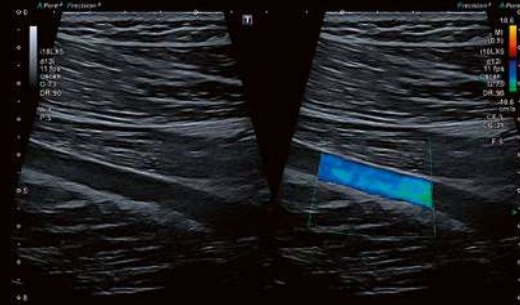
Outstanding penetration, optimal signal quality



Vascular exams can be challenging. Aplio provides optimal imaging resolution and sensitivity for all vascular applications, while automated quantification and analysis tools like Auto Doppler Trace or IMT measurements help you increase accuracy, consistency and speed of your exams.



Canon's wide-band transducers deliver outstanding imaging contrast and resolution over an extended range of depths, even in difficult-to-image patients.



TwinView enables you to display B-mode and color Doppler side by side, allowing you to assess morphology and hemodynamics simultaneously.

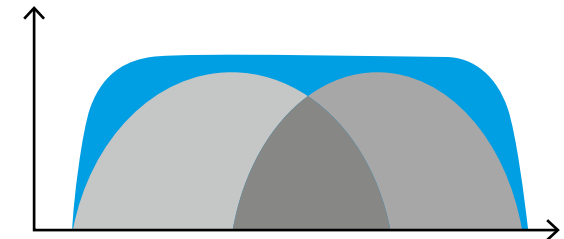
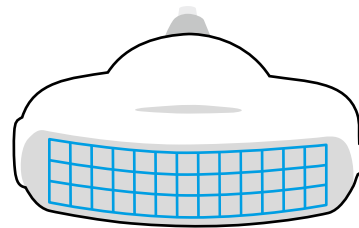
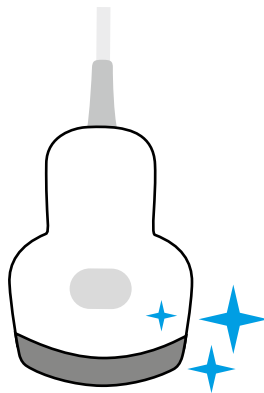


Aplio's Protocol Assistant navigates you through your workflow with a clear, easy-to-read menu ensuring that exams are done consistently, while allowing you to step in and out as needed.

A perfect match from front to end

Meticulous design – all out of one hand

At Canon, we develop, design and manufacture the core imaging components of our industry-leading ultrasound equipment in-house to ensure that soft- and hardware work perfectly in sync to provide superior clinical and economic value to our customers and their patients.



Single crystal

Aplio connects to a range of transducers that use single crystal technology to provide better visualization and improved penetration of up to 50 cm, so you can better manage your hard-to-image patients.

iDMS matrix technology

Aplio's iDMS matrix array technology sharpens ultrasonic beams in the elevation direction to create a thin slice beam with continuous focus from the near to the far field.

Ultra-wideband transducers

Aplio's ultra-wideband, multi-frequency transducers provide superior sensitivity and resolution for both near and far field. The ability to use one transducer across different patient types can potentially reduce cost while providing enhanced imaging.

A higher definition of imaging

iBeam+ is the next level of ultra-fast and precise beam shaping, enhancing image depth and detail with clear, sharp, and distinct images.



Aplio's iBeam+ beamformer technology enables up to 4 times faster* image processing in real time to provide sharper images with better penetration and thus optimal, more robust results for higher clinical confidence.

In combination with other imaging modes or advanced applications, iBeam+ can help you to improve clinical utility and operability with enhanced image uniformity, higher speed and fewer operation steps* to achieve an optimal result.

*compared to the previous versions of Aplio i-series

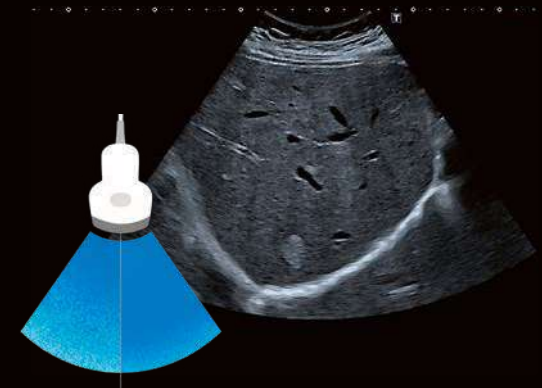
Improved uniformity

Aplio's innovative Full Focus function enables clear, uniform images from near and to far field without the need for focus adjustments. With fewer adjustment steps and greater uniformity, this can be particularly useful for screening examinations.



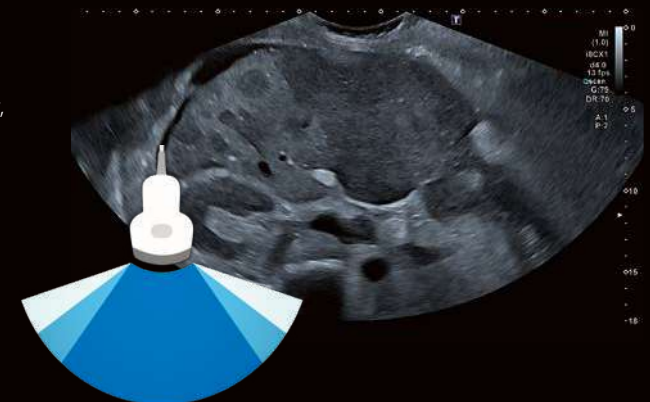
Enhanced penetration

The improved bandwidth and processing power of the iBeam+ beamformer results in images with better penetration and detail resolution, so you can see more without having to switch to a lower frequency transducer.



Ultra Wide View

While typically the footprint of a transducer has limited the anatomy that we can show, Canon's Ultra Wide View allows you to extend the field of view by up to 100% while maintaining excellent image quality and frame rate throughout.





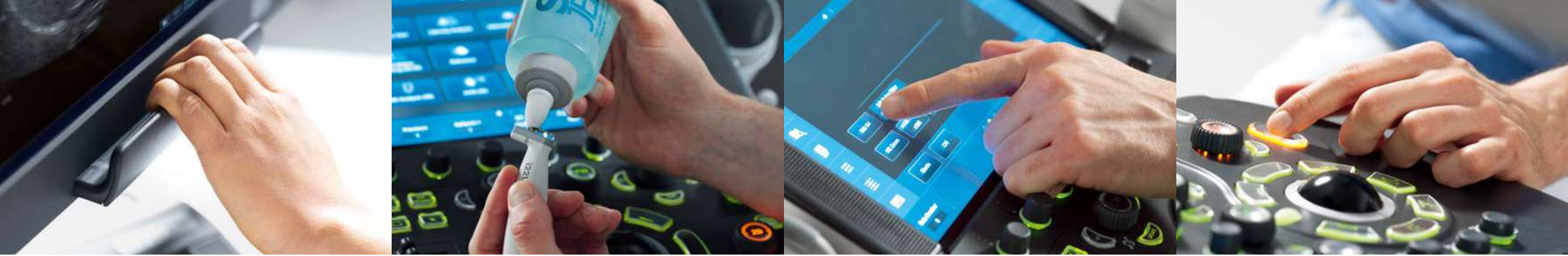
Scan comfortably and more efficiently

Upgrade your workplace



For more information on setting up an ergonomic workplace go to healthysonographer.com/

Aplio's design can help you scan more comfortably and boost your productivity in daily routine as well as more complex cases. Aplio's system console is fully adjustable for seated or standing use and easily accommodates a variety of users. The rotating user interface allows alignment of elbow, wrist and trackball in an ergonomically sound and patient-engaging position.



Create your ideal workplace

Aplio i-series can be easily and quickly adapted to enable a comfortable, patient-oriented scanning position at all times.

Large monitor with fully articulating arm and handgrip

Floating panel and large touch screen for optimal positioning and operability

Motorized panel height adjustment with 36 cm range

Backlit transducer connectors and convenient footrest



Enjoy optimal mobility

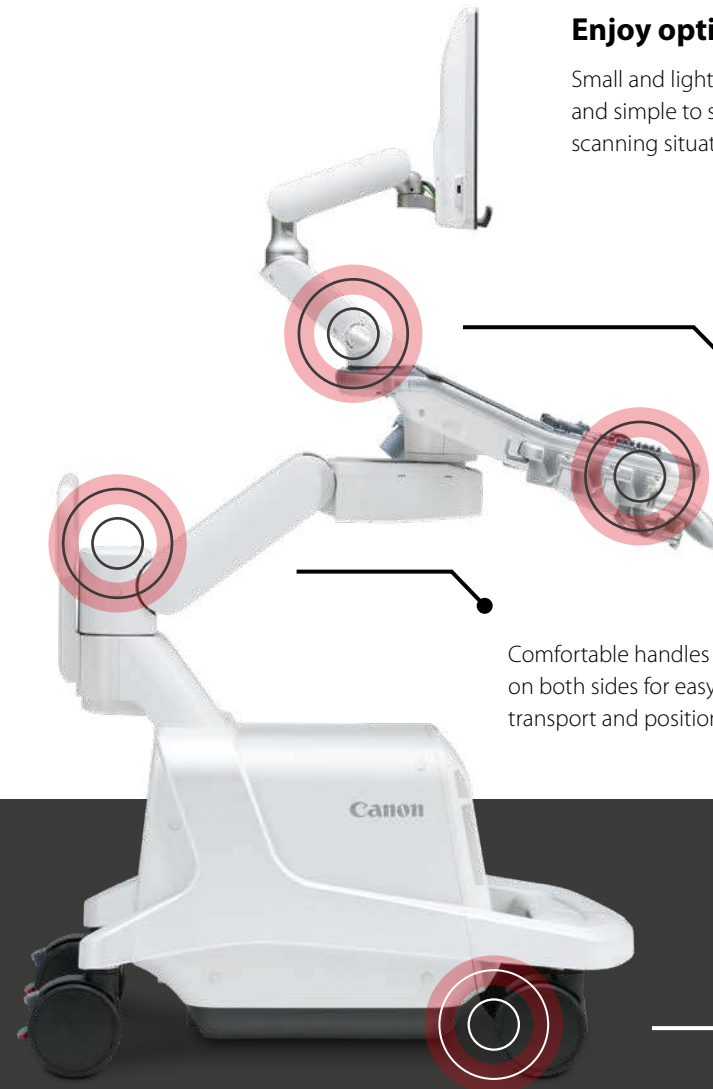
Small and light, Aplio i-series is easy to maneuver and simple to set up ergonomically sound for any scanning situation.

Fully collapsible screen and main panel for easier transport

Up to 30 minutes autonomous scanning with optional battery

Comfortable handles on both sides for easy transport and positioning

Easy-roll casters with central lock and brake mechanism



Collaborate and communicate

Whether you work at a large university or local hospital, a private practice or in an imaging center – Aplio i-series / Prism Edition offers a variety of ways to connect to your network, to collaborate with experts and to communicate directly with colleagues or Canon specialists.



Aplio connects seamlessly into hospital networks providing a full-spectrum solution that helps you manage patients and exams more efficiently while embracing standardized data formats.



For smaller hospitals or practices without an extensive hospital network, Aplio also offers the option of connecting to a local NAS in order to store all data securely.



With the embedded raw data functionality you can optimize, review, analyze and report your clinical data either on the device or on an optionally available workstation without losing functionality.



Advanced visualization

Canon's workstation solutions give you full access to your clinical data and diagnostic toolbox to manage routine and advanced clinical studies more efficiently.



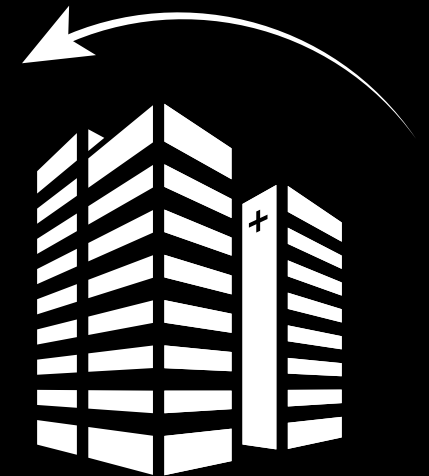
Integrating modalities

On Aplio, merging modalities such as CT, MR or PET for synchronized display is a simple, automated process that allows you to easily identify and compare lesions and to safely navigate complex anatomy.



Interdisciplinary intervention

With dedicated imaging and navigation tools, Aplio can also be integrated with interventional solutions such as the Alphenix 4D CT to further improve confidence and accuracy in interventional procedures and their follow-up.





Wireless console

The optional wireless tablet allows you to remotely operate the system when it is difficult to scan a patient and reach the panel at the same time, without losing sight of the monitor.



Remote connection

Need expert advice? Or want to share some findings with peers? With Canon's optional ApliGate solution you can interact securely – right from your workplace.



Cloud services

The system's integrated Tricefy* option gives you direct access to cloud-based communication, image management and documentation, so you can instantly share images and reports with referring physicians or patients.



Remote support

Connecting Aplio with Canon's InnerVision remote support is simple, safe and provides you with a wealth of benefits that you'll be able to enjoy directly at your system.



*Tricefy is an independent third-party service that requires an additional third-party subscription and may not be available in all regions.

Aplio *i-series*

Canon

CANON MEDICAL SYSTEMS CORPORATION

<https://global.medical.canon>

©Canon Medical Systems Corporation 2016–2022. All rights reserved.
Design and specifications are subject to change without notice.
Model number: TUS-AI700
MCAUS0317EAB V6.5 2022-03 CMSC/Produced in Japan

Canon Medical Systems Corporation meets internationally recognized standards for Quality Management System ISO 9001, ISO 13485.
Canon Medical Systems Corporation meets the Environmental Management System standard ISO 14001.

Altivity, ApliGate, Aplio, Flexstyle, TwinView and Made for Life are trademarks of Canon Medical Systems Corporation.
Tricefy is a trademark of Trice Imaging, Inc.

Disclaimer: Some features presented in this brochure may not be commercially available on all systems shown or may require the purchase of additional options. Please contact your local Canon Medical Systems representative for details.

Made For life