



EU-TYPE EXAMINATION CERTIFICATE

- (1)
- (2) Equipment or Protective System Intended for use in Potentially Explosive Atmospheres
Directive 2014/34/UE
- (3) EU-Type Examination Certificate Number: **JSHP 19 ATEX 0033X**
- (4) Product: **IN-LINE INSPECTION TOOLS (3''-56'') (UT-MFL-TFI-CLP-IMU-EMAT-Combo)**
- (5) Producer: **LIN SCAN ADVANCED PIPE LINES & TANKS SERVICES,**
- (6) Address: **Plot #1H-25B Hamriyah Free Zone Sharjah, Post Box No. 62159 Dubai, United Arab Emirates**
- (7) This product and any acceptable variation thereto is specified in the schedule to this certificate and the documents therein referred to.
- (8) J.S. Hamilton Poland Sp. z o.o., Notified Body no. 2057, in accordance with Article 17 of Directive 2014/34/EU of the European Parliament and of the Council, dated 26 February 2014, certifies that this product has been found to comply with the Essential Health and Safety Requirements relating to the design and construction of products intended for use in potentially explosive atmospheres given in Annex II to the Directive.
The examination and test results are recorded in confidential Report No. JSHP/RW54/18/KS.
- (9) Compliance with the Essential Health and Safety Requirements has been assured by compliance with:
- | | | |
|---|---|--|
| EN 60079-0:2018
(PN-EN 60079-0:2018-09) | EN 60079-2:2014
(PN-EN 60079-2:2015-02) | EN 60079-11:2012
(PN-EN 60079-11:2012) |
|---|---|--|
- (10) If the sign "X" is placed after the certificate number, it indicates that the product is subject to the specific conditions of use specified in the schedule to this certificate.
- (11) This EU - TYPE EXAMINATION CERTIFICATE relates only to the design and construction of the specified product. Further requirements of the Directive apply to the manufacturing process and supply of this product. These are not covered by this certificate.
This certificate is valid in its entirety, schedule(s) included.
- (12) The marking of the product shall include the following:

 **II 2G Ex pxb ib IIB T4 Gb**



Łukasz Brudny

Kierownik Jednostki
Certyfikującej



SCHEDULE

CERTIFICATE No. JSHP 19 ATEX 0033X

(13)

(14)

(15)

Description of product:

LIN SCAN In-Line Inspection Tools (3"-56") (UT-MFL-TFI-CLP-IMU-EMAT-Combo) are used for detection, measurement and categorization of metal loss, corrosion, cracks, geometry features within the pipe wall of high pressure steel pipelines. The tools are pushed by the product stream and scans the wall of the pipeline with specific sensors. Data is processed and stored in electronics sub-systems inside the tool. In-Line Inspection Tools can be either multi section tool or single section tool depending on size. These sections include: battery section, electronics sections and sensor carrier sections. Battery section and electronics section can be combined into single section in some sizes. Standalone battery section or combined battery/electronics sections of the tool are considered explosion protected sections. Explosion protection is provided by hermitically sealed container filled and pressurized with inert gas and intrinsic safety system that prevents energizing any part of the tool in potentially explosive zones.

Technical characteristics:

Power source	Primary Lithium Sulfuryl Chloride Cells	
Operating voltage	24(Max).. 10(Min)	V
Operating pressure	8 (Max)	MPa
Ingress protection	IP68	
Ambient temperature	-20 °C ≤ Tamb ≤ +75°C	

(16)

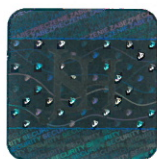
Report number:

– JSHP/RW54/18/KS

(17)

Specific conditions of use:

- Ambient temperature range: -20 °C ≤ Tamb ≤ +75 °C.
- Only battery section with protection board are intended to operate in hazardous zone, all other Multi Tool sections connected to the battery section cannot be powered in hazardous areas.
- Battery section can't be opened in hazardous area.
- Battery section is a sealed container protected by static pressurization. Container can be filled in only in non-hazardous area



Łukasz Brudny
Kierownik Jednostki
Certyfikującej



SCHEDULE

CERTIFICATE No. JSHP 19 ATEX 0033X

(13)

(14)

(18)

Essential Health and Safety Requirements:

These requirements (EHSRs) are covered by the standards listed at item 9.

(19)

Drawings and documents:

- UT Tools Operating Manual
- MFL Tools Operating Manual
- TFI Tools Operating Manual
- CLP Tools Operating Manual
- IMU Tools Operating Manual
- Vacuum Testing and Purging Procedure (LIN/QM/VTPP/D01)
- Technical Description of Protection Board EL.104.116.02-02

Detailed list of documents required for certified type identification is included in Report mentioned in Clause (16).



Łukasz Brudny

Kierownik Jednostki
Certyfikującej