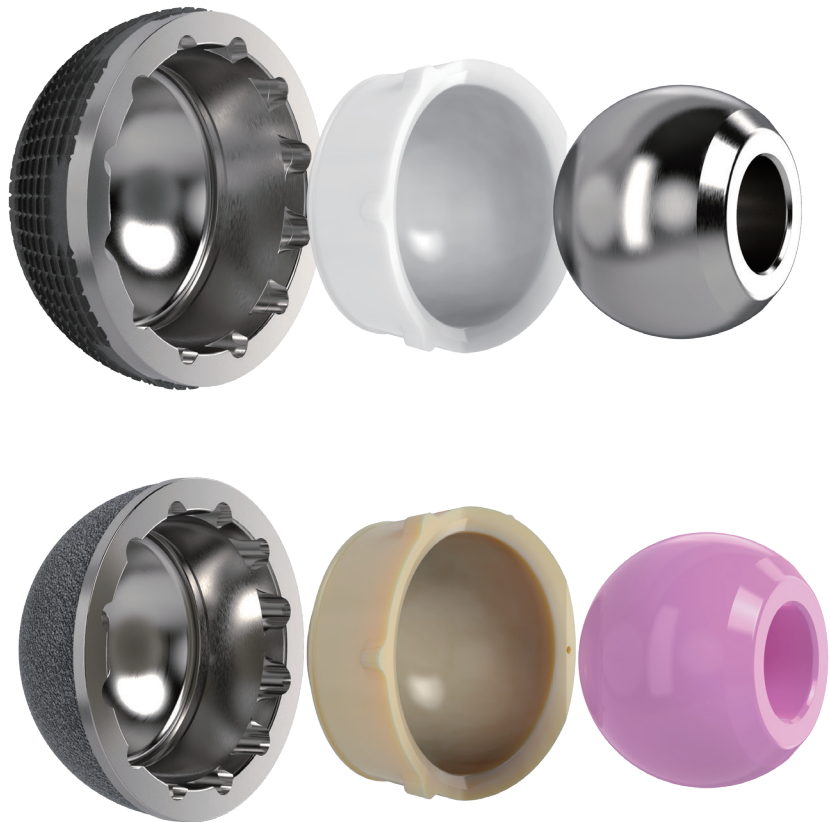
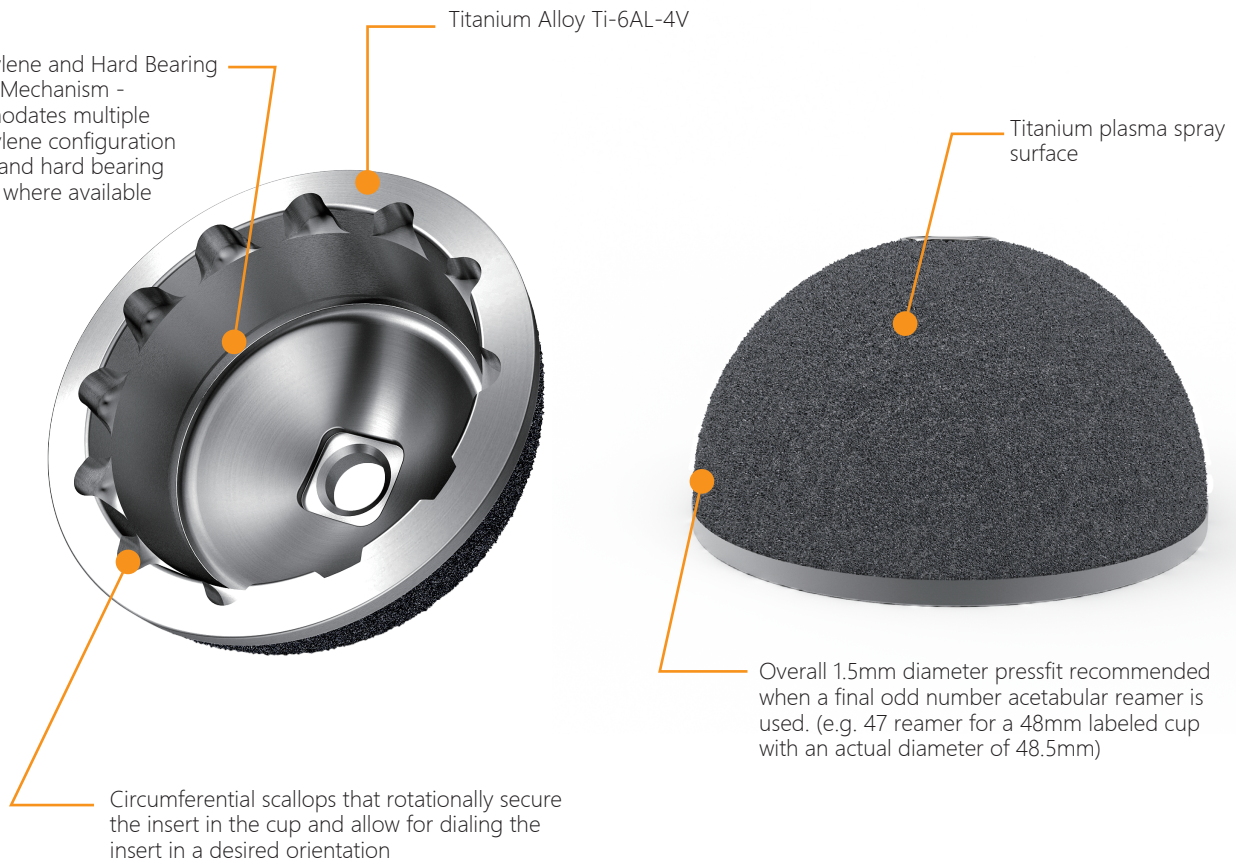


VarioCup

Primary Acetabular System



VarioCup, TPS Coating



The hemispherical design closely matches the shape of the natural acetabulum, allowing for minimal removal of bone while maximizing contact area between the implant and bone.

Wide size range - 42-68mm for no-hole and three-hole versions

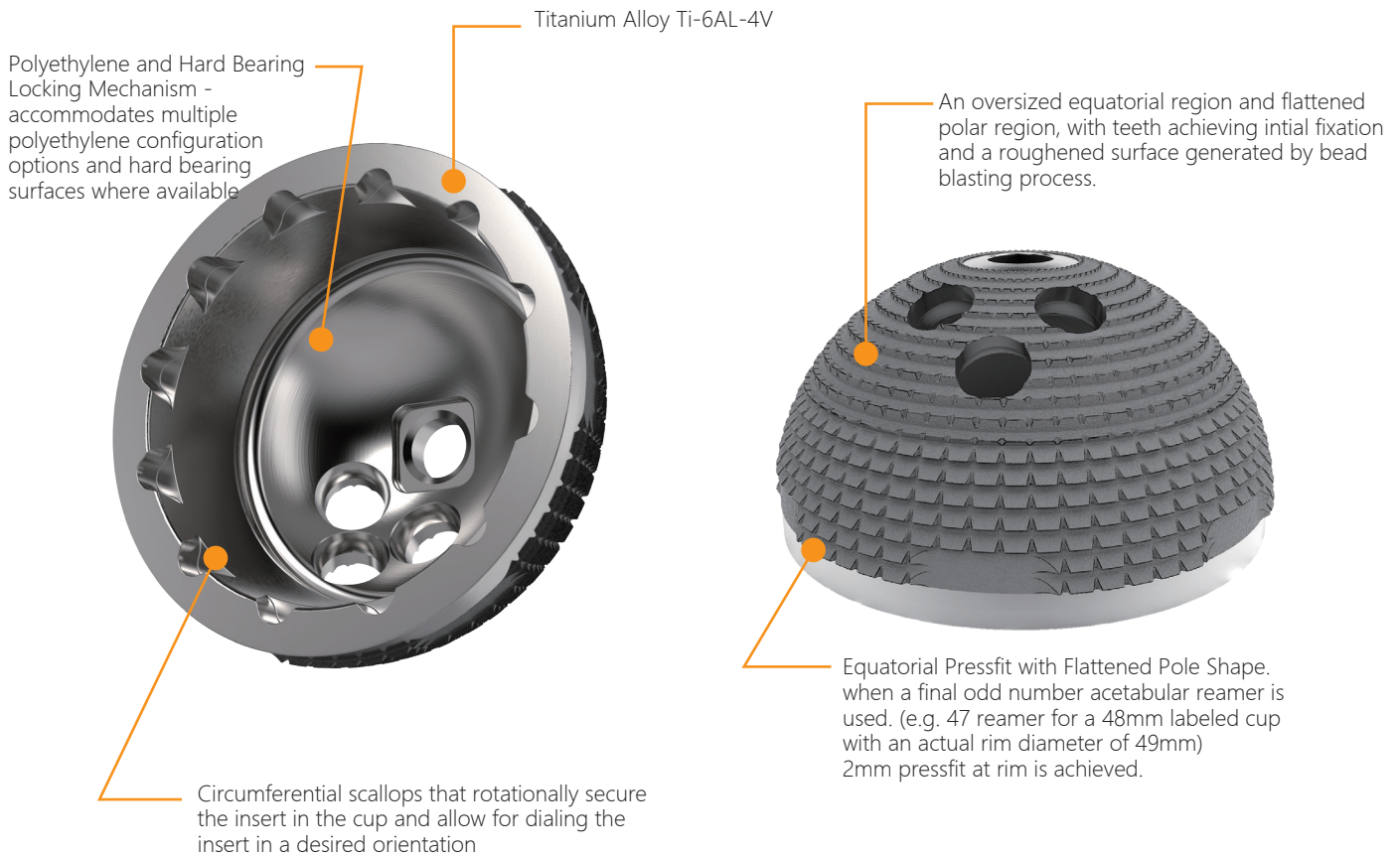
Optional screws and hole plugs can be used.

Bearing Options

VarioCup series offers a selection of cup geometries compatible with standard polyethylene, highly crosslinked polyethylene, Vitamin-E highly crosslinked polyethylene and ceramic inserts to accommodate the demands of a broader patient population. Dual Mobility Liner can also be used with VarioCup series to perform a dual mobility hip surgery

- **State-of-art Design**
- **One cup mate with three kinds of inserts (polyethylene, ceramic and CoCrMo liner)**
- **Bone in-growth titanium coating**

VarioCup, Pressfit



Circumferential scallops that rotationally secure the insert in the cup and allow for dialing the insert in a desired orientation

Wide size range - 42-68mm for no-hole and three-hole versions

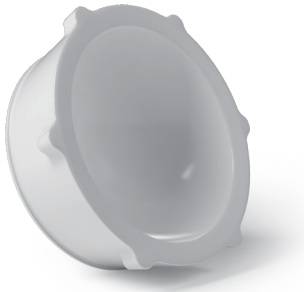
Optional screws and hole plugs can be used

Bearing Options

VarioCup series offers a selection of cup geometries compatible with standard polyethylene, highly crosslinked polyethylene, Vitamin-E highly crosslinked polyethylene and ceramic inserts to accommodate the demands of a broader patient population. Dual Mobility Liner can also be used with VarioCup series to perform a dual mobility hip surgery.

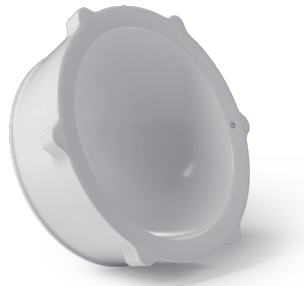
- **State-of-art Design**
- **One cup mate with three kinds of inserts (polyethylene, ceramic and CoCrMo liner)**
- **Equatorial region and flattened polar region, with teeth achieving initial fixation**

Bearing Options



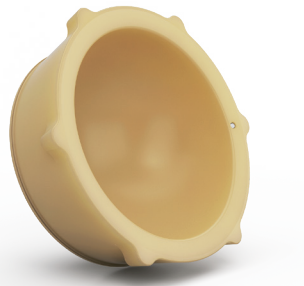
VarioCup Insert, UHMWPE

Neutral or 15° hooded
Size range: 22,28,32mm Inner diameter; Mate with 42-64mm Cups
Solid locking mechanism with acetabular cups
Peripheral tabs work as anti-rotation mechanism



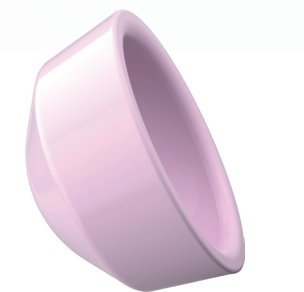
VarioCup Insert, Highly Crosslinked UHMWPE

Neutral or 15° hooded
Size range: 22,28,32, 36mm Inner diameter; Mate with 42-68mm Cups
Highly crosslink process reduce wear rate significantly
Solid locking mechanism with acetabular cups
Peripheral tabs work as anti-rotation mechanism



VarioCup Insert, Vitamin-E Highly Crosslinked UHMWPE

Neutral or 15° hooded
Size range: 22,28,32, 36mm Inner diameter; Mate with 42-68mm Cups
Highly crosslink process reduce wear rate significantly
Vitamin-E works as antioxidant
Solid locking mechanism with acetabular cups
Peripheral tabs work as anti-rotation mechanism



Ceramic Insert

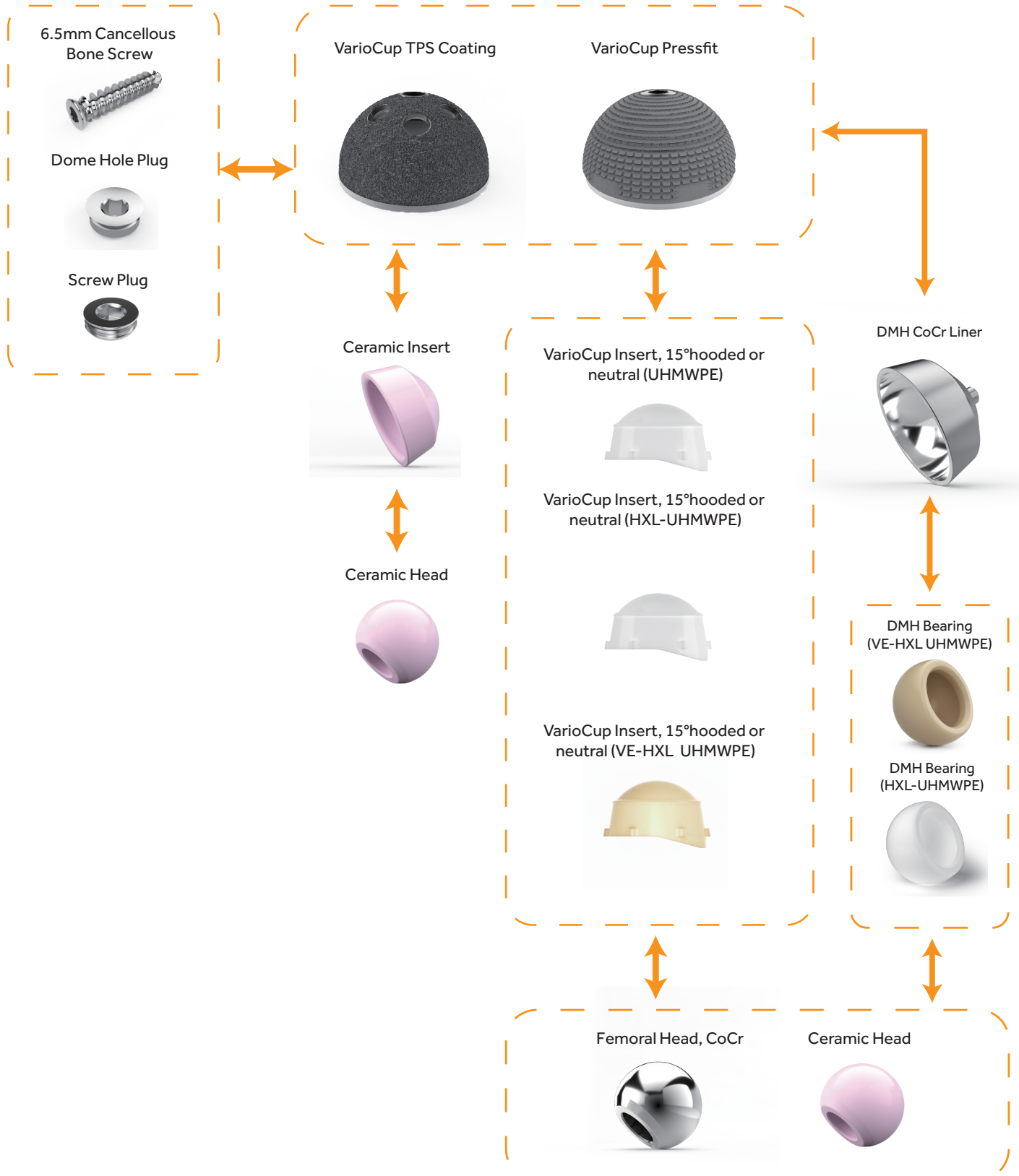
Proven taper design works as locking mechanism with acetabular cups
28,32,36,40mm Inner diameter mating with acetabular cups from 44-64mm
Low wear rate for ceramic on ceramic bearing surface



DMH CoCr Liner

Highly polished inner surface
Polar peg facilitate the insertion of liner
Material: CoCrMo alloy
Dual mobility increase range of motion

Hip Compatability Chart

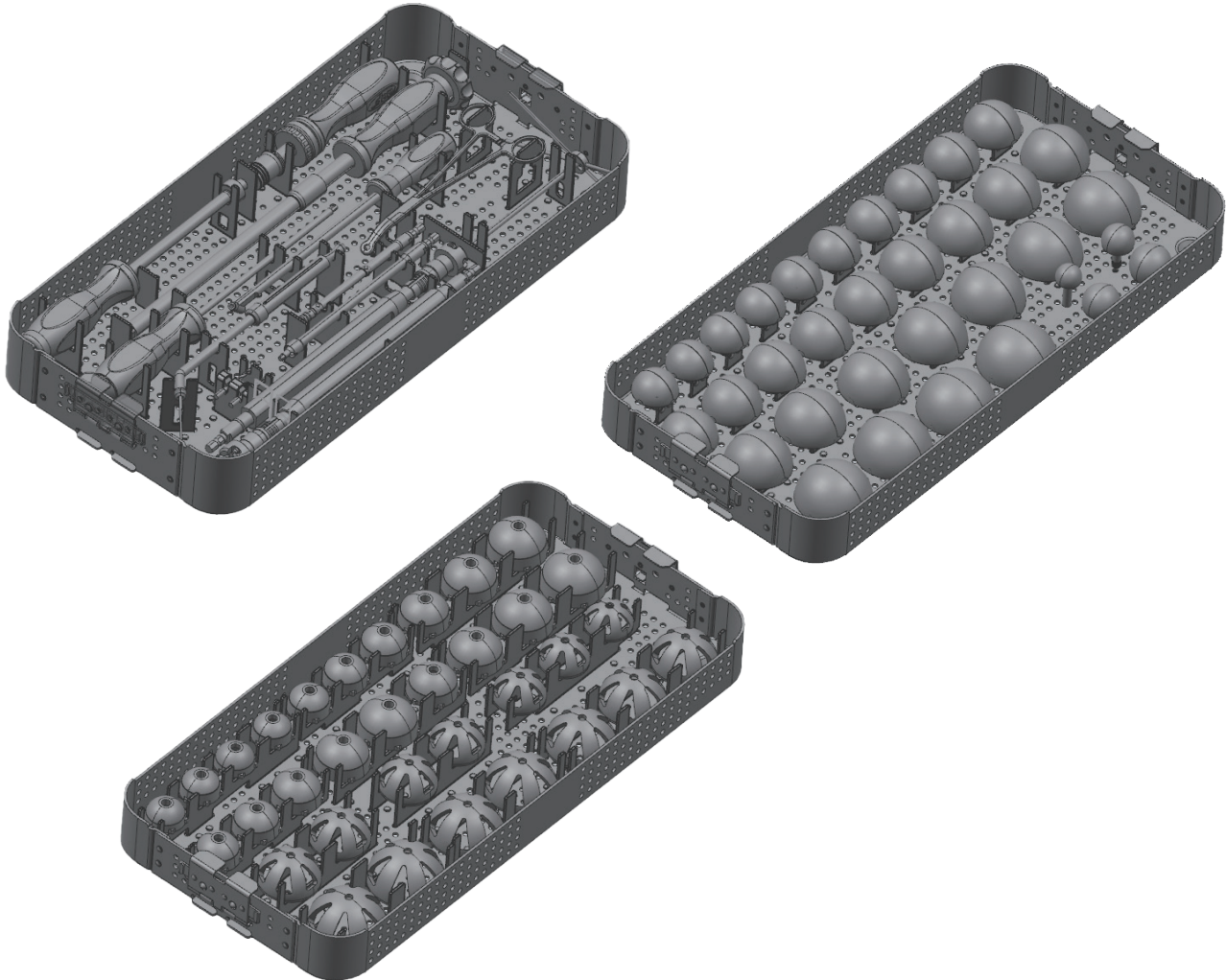


Cup Insert Compatibility Chart for 42-68mm Cups

Cup Size in mm	42	44	46	48	50	52	54	56	58	60	62	64	66	68
Cup Size Compatibility	BB	MM	NN	OO	PP	PP	QQ	QQ	RR	RR	SS	SS	TT	TT
VarioCup insert, Neutral or 15° hooded, UHMWPE	22mm ID													
		28mm ID												
				32mm ID										
VarioCup insert, Neutral or 15° hooded, HXL UHMWPE / VE HXL UHMWPE	22mm ID													
		28mm ID												
				32mm ID										
							36mm ID							
Ceramic Insert		28mm ID												
				32mm ID										
							36mm ID							
									40mm ID					

Cup Size in mm	42	44	46	48	50	52	54	56	58	60	62	64	66	68
Cup Size Compatibility	BB	MM	NN	OO	PP	PP	QQ	QQ	RR	RR	SS	SS	TT	TT
DMH CoCr Liner (Inner Diameter in mm)			34	36	38		40		44		48		52	
DMH Bearing (Outer Diameter in mm), HXL UHMWPE / VE HXL UHMWPE			34	36	38		40		44		48		52	
Ceramic Head							28mm							
Femoral Head, CoCr			22mm				28mm							

Same 3 Tray Instrument Sets for VarioCup TPS Coating and Pressfit versions



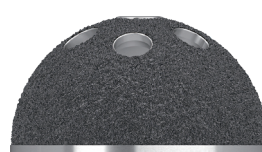
Cup Pressfit Recommendation



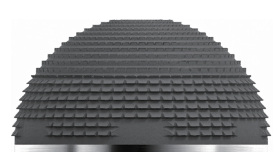
Acetabular Reamer,
47mm labeled reamer
has a 47mm O.D.



Cup Trial,
47mm labeled cup trial
has a 47mm O.D.



TPS Coated Cup,
48mm labeled cup
has a 48.5mm O.D.



Pressfit Cup,
48mm labeled cup
has a 49mm O.D. (including teeth)

[illegible]