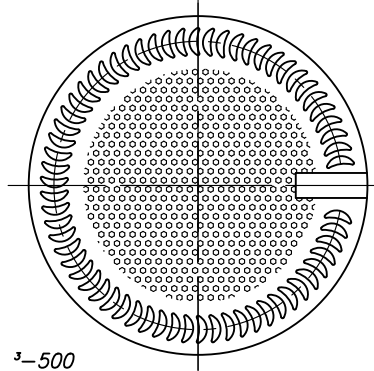
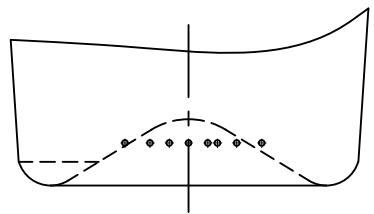
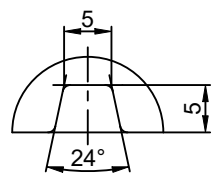


A(2:1)



BOTTOM VIEW

Characteristics
 Nominal capacity, cm³ -500
 Filling level, cm³ -500±10
 Weight recommended, g -355

Thickness of walls, not less -1.2 mm
 Thickness of a bottom, not less, -2.2 mm
 Thermal stability, difference of temperatures, not less, °C -35
 Internal hydrostatic pressure not less, kgf/cm² -2

Appr.	Letter	Document N	Signature	Date
	Designed	Cosovschi P.		12.05.26
	Sales manager	Palii A.		12.05.26
	Dr. of manuf.	Baltaji I.		

A. preliminary				
"VICTORY"		Letter	Weight	Scale
B-28-1-500				1:1
Flint		Sheet 1	Sheets 3	
		FSC		®