

Accessories for Surface Roughness Tester

Sensors, Calibration specimen, Stands

☆ Except for flat surface, we recommend the instrument equipping with suitable height stand

Image	Description
	KS55 - Extending Rod , Extending the length of sensor (extending 50mm) , can add 3 pieces in maximum.
	KS90 - Right Angle Rod , change the direction of sensor to make it move in transverse , mostly for surface of particular groove such as crankshaft etc.
	KS100 - Small Hole Sensor , for most of the plane, inclined plane, cone work piece, and measures in holes of a diameter $>5\text{mm}$ and a depth $<15\text{mm}$.
	KS110 - Curved Surface Sensor , for convex or concave surfaces with a curvature radius of 3 mm or more.
	KS120 -very small hole Sensor , in holes of a diameter $>2\text{mm}$ and a depth $<9\text{mm}$..
	KS130 - Groove sensor , measuring in grooves with a width greater than 3 mm and a depth less than 3.2mm, the distance from the stylus tip to the front edge is 3mm.
	KS160 - Axe type Sensor , measuring in grooves with a width greater than 3 mm and a depth less than 3.2mm, the distance from the stylus tip to the front edge is 1.6mm. Measuring for flat surface when used for split type roughness tester.
	KS131 - Deep Groove Sensor , in grooves with a width greater than 3 mm and a depth less than 10 mm. and measures steps less than 10mm in height.
	KS131P - 7mm Groove & Curved Sensor , in grooves with a width $> 1.5\text{ mm}$ and a depth $< 7\text{ mm}$. and measures steps less than 10mm in height.
	KS132 - 13mm Groove & Curved Sensor , in grooves with a width $> 2\text{mm}$ and a depth $<13\text{mm}$, and measures steps less than 15mm
	KS133 - 13mm narrow Groove Sensor , in grooves with a width $> 1.2\text{mm}$ and a depth $<13\text{mm}$, and and measures steps less than $<15\text{mm}$
	KS135 - 23mm Groove Sensor , in grooves with a width $> 2\text{mm}$ and a depth $<23\text{mm}$. and measures steps less than $<25\text{mm}$



KA520 -Metal Substrate Working platform, elevating, convenient and stable for test process.

1. Height Adjustable: $200\pm 1\text{mm}$
 2. Return error: $\leq 1/6$ round of lifting wheel
 3. Base Size: $330\text{mm}\times 295\text{mm}\times 12\text{mm}$
 4. Rotation angle: 80°
- Packing Size & weight: $42*21*15\text{cm}$ 5KG



KA620 -Marble Substrate Working Platform, include V block

1. Height Adjustable: $300\pm 1\text{mm}$
 2. Return error: $\leq 1/6$ round of lifting wheel
 3. Marble Size: $400\text{mm}\times 250\text{mm}\times 70\text{mm}$
 4. Rotation angle: 80°
- Packing Size & weight:

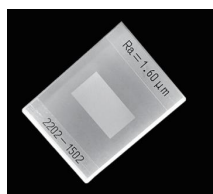
column $54*24*15\text{cm}$, 4.5kg; marble base $43.5*28.5*10\text{cm}$,23kg



Height Gauge, adjust height and direction of a tester. Especially suit for split type surface roughness tester, Adjustable maximum height: 300mm.



Magnetic Stand, arm length: about 200mm including joint. The column: about 200mm in height including base. Adjustable maximum height: 150mm
Rod of the magnetic adaptor (the part attached to the tester) $\varnothing 8\text{mm}$



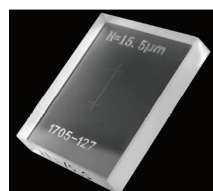
Standard Roughness Calibration Block Multi-reticle specimen(Square Wave)

Made by optical glass, with high hardness, high accuracy standard roughness value, anti-scratch, has longer life than metal roughness block.

Meet standard GB/T19067.1-2003 and ISO5436-1:2000

Approximation: $R_a=0.1\mu\text{m}$, $0.2\mu\text{m}$, $0.4\mu\text{m}$, $0.8\mu\text{m}$, $1.6\mu\text{m}$, $3.2\mu\text{m}$, $6.4\mu\text{m}$

Customized Value and Sine Wave available, welcome to inquire.



Roughness Calibration Block Single engraved lines

Meet standard GB/T19067.1-2003 and ISO5436-1:2000

Approximation: H10-20 μm (roughness tester use filter D-P, test RT value)

Customized Value available, welcome to inquire.



Mini thermal printer

Size: $108*76*46.6\text{mm}$

External printer, interface: USB, Blue Tooth, the Baud rate will be set accordingly for connecting tester before delivery. suitable for our surface roughness tester, hardness tester, thickness gauge. Paper size: width is (57.5 ± 0.5) mm, diameter is 30mm



Very Small Sensor KS120



Small Hole Sensor KS100



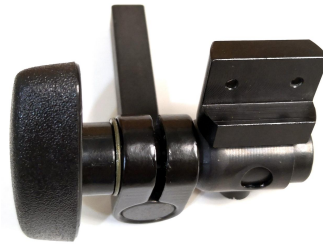
13mm Groove & Curved Sensor KS132



Axe Type Sensor KS160



Calibration Specimen in Box



Height Gauge Adaptor Steel Bar (attachment to height gauge): 9.04*9.10 *27mm(H*W*L)



KA520 - Metal Substrate Working platform



KA620 - Marble Substrate Working Platform