

# naviscore

Coronary scoring balloon dilatation  
catheter



**iVascular**<sup>®</sup>  
therapies for living

# naviscore

## A new player in calcified lesions

**Naviscore** is an **innovative coronary scoring balloon dilatation catheter**. iVascular breaks new ground by developing a product with a **hybrid design** that combines the benefits of scoring and cutting balloons.



### BEST OF CUTTING

#### **Axial filaments orientation:**

Ensures greater cross capacity and a 90° axial plaque modification.

### BEST OF SCORING

#### **Nitinol wires flexibility:**

Ensures better navigability and low perforation risk while modifying the plaque.

## When to use Naviscore

Naviscore is indicated in significant lesions, including in-stent restenosis and especially in complex lesions with:



**Long length**



**Severe calcification**



**Significant bifurcation**

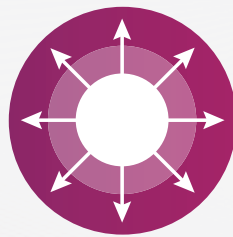


# Why Naviscore



## Optimal trackability

Naviscore easily crosses the lesion



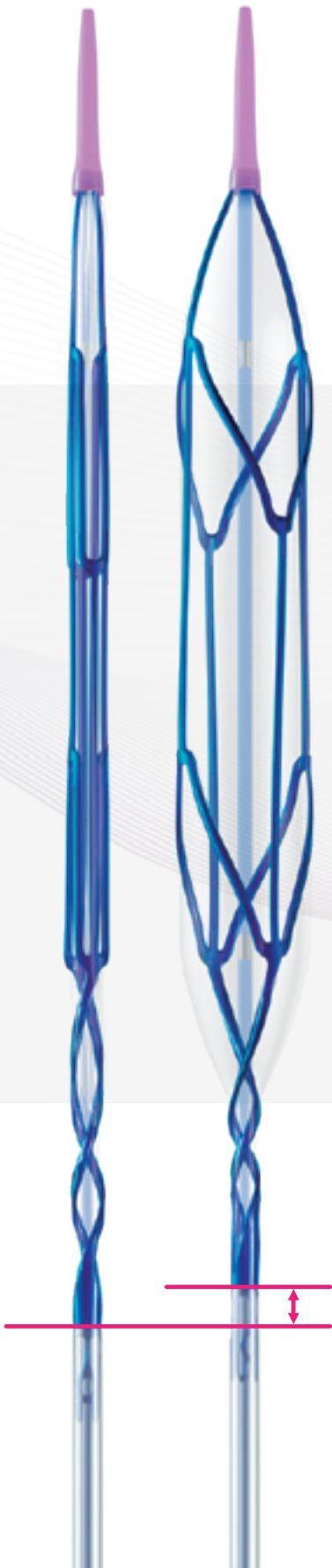
## Enhanced scoring capacity

Naviscore performs an effective plaque modification



## Excellent rewrap and recross capabilities

Naviscore inflates as many times as you need





**Low profiles and no deformation** ensured by axial structure.

**Low artery wall friction** due to proprietary hydrophilic coating.

**The smallest diameter** available in the market.



**Ø1.50 mm**

**6 times** larger scoring surface than competitor\*.

**21x more force** than conventional balloons\*\*. Uniform axial force at 90° offers more control on plaque modification.

**20 atm** of RBP. High-resistant semi-compliant balloon.

**Excellent balloon folding** due to its memory shape nitinol structure.

**Optimized profile rewapping** thanks to unique scoring structure.

\* Data on file, comparison vs Angiosculpt, Phillips

\*\* Data on file at iVascular. Naviscore vs semi-compliant balloon

# Severely calcified lesion treated with Naviscore

## Patient profile

- Male, 76 years old
- CRF: HTA, Ex-smoker, CKD
- NSTEMI 2018. BAV.

## Lesion type

- Angiography showing the LCx chronically occluded, severely calcified.
- Also the LAD have a severe plaque and extremely calcified.

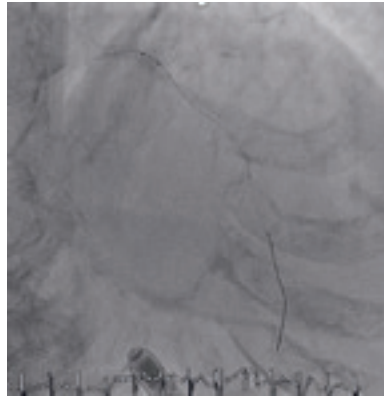
## Procedure

- During the procedure a 6F guiding catheter was used.
- The lesion observed was severely calcified but **Naviscore 3.0 x 6mm could advance without difficulties** (Figure 1).
- **Naviscore crossed the calcified plaque easily** (Figure 2).
- Once **Naviscore crossed the lesion at the 1st attempt** (Figure 3), it was inflated progressively.
- First inflation was up to 18 atm, a deformity was noted on the proximal part.
- **On a second inflation, the balloon was inflated up to 20atm. The plaque broke and the vessel was opened with an optimal result.**
- Finally, an Angiolite stent was implanted. **Angiolite expanded and apposed correctly** showing an optimal angiographic result (Figure 6).

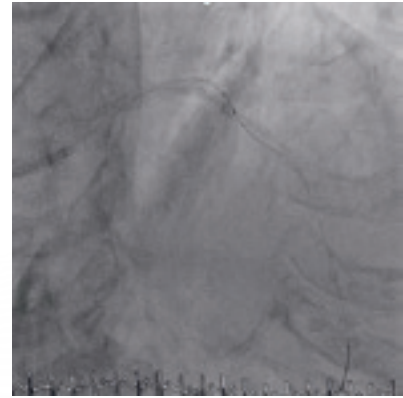
*CRF: Cardiovascular risk factors, HTA: hypertension, CKD: Cronical kidney disease, NSTEMI: non-ST segment elevation myocardial infarction*



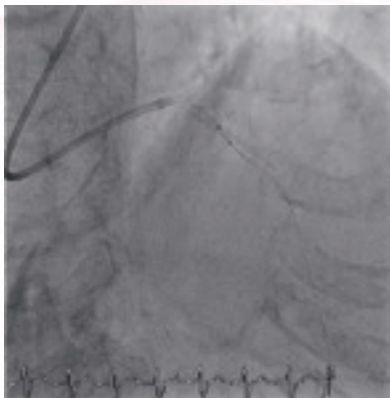
**Fig 1.** LCx chronically occluded and LAD severely calcified



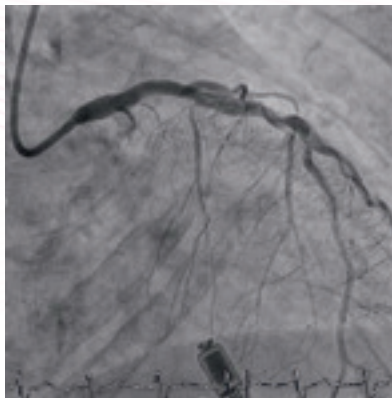
**Fig 2.** Naviscore penetrating the lesion at 1st attempt



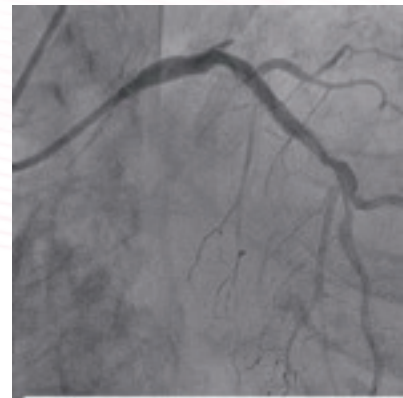
**Fig 3.** Naviscore crossed the lesion



**Fig 4.** Naviscore inflated breaking the plaque



**Fig 5.** Angiographic result after Naviscore



**Fig 6.** Final angiographic result

## Conclusions

*“Naviscore is a very powerful device with more pushability than the other competitors, easier entry into the lesions, and greater plaque modification.”*

**Naviscore should be the FIRST CHOICE DEVICE for the treatment of these difficult and complex lesions** thanks to its crossing capacity of severely calcified lesions at the 1st attempt and the effectiveness of opening the vessel.”



Dr. Antoni Serra, Hospital Sant Pau, Barcelona, Spain

# Naviscore features

- Rapid Exchange catheter (RX)
- Guidewire compatibility: max. 0,014"
- NP: 8 atm | RBP: 20 atm
- Pt/Ir radiopaque markers
- Proprietary hydrophilic coating Hydrax plus
- 6F compatibility

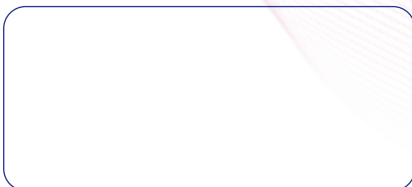
Product with CE mark, certified by Notified Body 0318

Balloon diameter (mm)	Effective length 142 cm				
	Balloon length (mm)				
	6	8	10	12	15
1.50	BCSR14150150006	BCSR14150150008	BCSR14150150010	BCSR14150150012	BCSR14150150015
2.00	BCSR14150200006	BCSR14150200008	BCSR14150200010	BCSR14150200012	BCSR14150200015
2.50	BCSR14150250006	BCSR14150250008	BCSR14150250010	BCSR14150250012	BCSR14150250015
3.00	BCSR14150300006	BCSR14150300008	BCSR14150300010	BCSR14150300012	BCSR14150300015
3.50	BCSR14150350006	BCSR14150350008	BCSR14150350010	BCSR14150350012	BCSR14150350015



The availability of each reference for the sale is linked to the authorization of commercialization in the country of destination

Distributed by



**Manufactured by:**  
Life Vascular Devices Biotech S.L

www.ivascular.global  
info@ivascular.global



**iVascular**<sup>®</sup>  
therapies for living

**i0**  
years

# essential pro

Paclitaxel eluting coronary balloon dilatation catheter



The novel reliable DCB



[www.ivascular.global](http://www.ivascular.global)



# essential pro

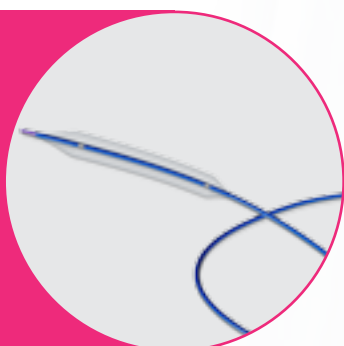
the novel reliable DCB



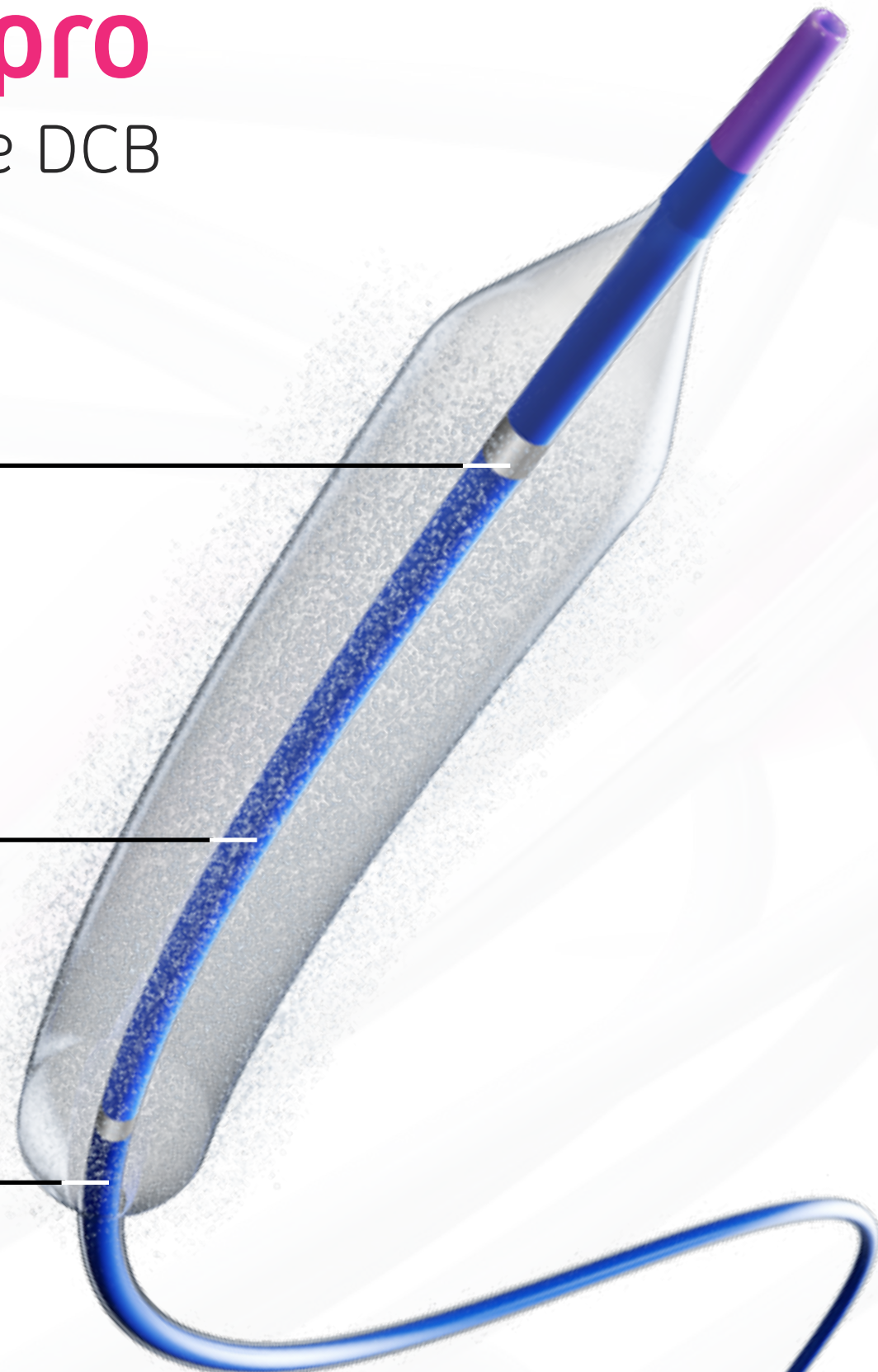
**Outstanding visibility** with metallic radiopaque markers



**Fast deflation time** due to an optimized design



**Optimal navigation** due to the innovative combination of materials and proprietary hydrophilic coating *hydrax plus*



## The latest balloon design

## Clinical benefits

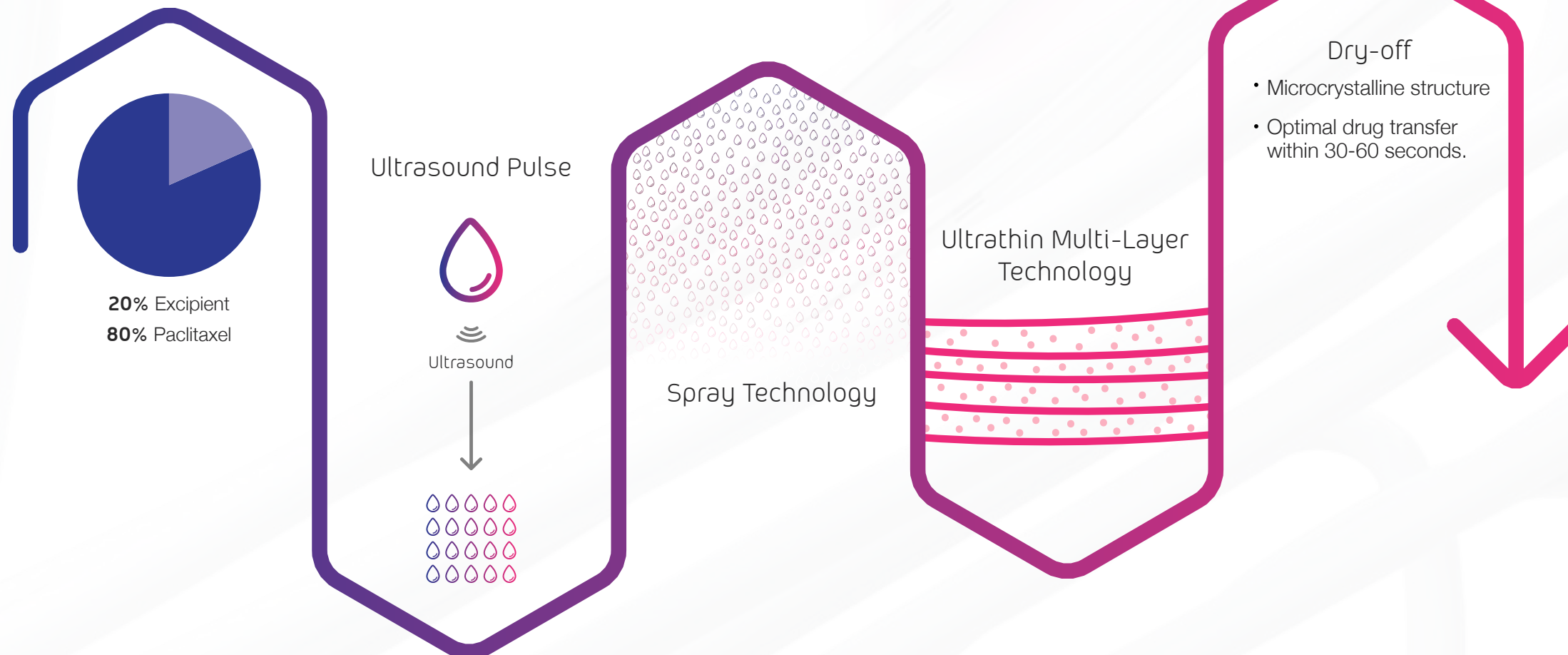
**Low drug loss** during navigation  
**Low stress** on the coating  
**Homogeneous distribution** drug

**SAFETY**

**EFFECTIVENESS**

**Fast absorption** and transfer  
 High retention time improving **quality of healing**

## The 3<sup>rd</sup> DCB generation





# iVasTriam

The iVascular Clinical Trial Program

## essential in small vessels\*

Observational, prospective and multicenter registry in small vessels.



Very small diameter of reference (<2.5mm) and high risk patients (56% diabetics) with only a 12.7% of bailout stenting



**TLF at 12-month** as a primary endpoint



**MACE at 12-month** as a secondary endpoint

The **RELIABLE ALTERNATIVE** for small coronary vessels

## essential in stent restenosis\*\*

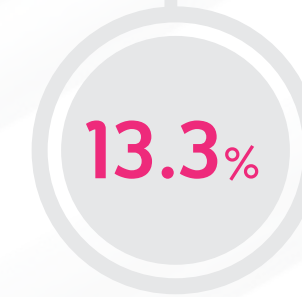
Investigator initiated, observational, prospective and multicenter study.



DES restenosis was treated in 67% of the cases and a 94% of DCB angiographic success was achieved with only 2 additional stenting



**In-segment maximal area stenosis at 6-month** as a primary endpoint



**TLF at 24-month** as a secondary endpoint

**GOOD and SUSTAINED EFICACCY** for treatment of ISR

\* n = 71  
Registry published in Sept. 2018:  
Rodés-Cabau J. et. Al. Coronary Artery Disease. 29(6): 477-481, Sept. 2018

\*\* n = 33  
Study published in July 2019  
De la Torre et al. Cardiovascular Revascularization Medicine July 2019, in press

# essential pro features

- > **Rapid exchange catheter (RX)**
- > Guide wire compatibility: **max. 0.014"**
- > **2 distal shafts:** 2.6F ( $\varnothing \leq 3$ ), 2.7F ( $\varnothing \geq 3.25$ )
- > NP: **6 atm** | RBP: **16 atm**
- > **2 Pt/Ir radiopaque markers**
- > **hydrophilic coating hydrax plus**

Product with CE mark, certified by Notified Body 0318

Balloon diameter (mm)	Working catheter length: 142 cm					
	Balloon length (mm)					
	10	15	20	25	30	40
1.50	BC DPRI4N 150 150 010	BC DPRI4N 150 150 015	BC DPRI4N 150 150 020	-	BC DPRI4N 150 150 030	-
2.00	BC DPRI4N 150 200 010	BC DPRI4N 150 200 015	BC DPRI4N 150 200 020	BC DPRI4N 150 200 025	BC DPRI4N 150 200 030	BC DPRI4N 150 200 040
2.25	BC DPRI4N 150 225 010	BC DPRI4N 150 225 015	BC DPRI4N 150 225 020	BC DPRI4N 150 225 025	BC DPRI4N 150 225 030	BC DPRI4N 150 225 040
2.50	BC DPRI4N 150 250 010	BC DPRI4N 150 250 015	BC DPRI4N 150 250 020	BC DPRI4N 150 250 025	BC DPRI4N 150 250 030	BC DPRI4N 150 250 040
2.75	BC DPRI4N 150 275 010	BC DPRI4N 150 275 015	BC DPRI4N 150 275 020	BC DPRI4N 150 275 025	BC DPRI4N 150 275 030	BC DPRI4N 150 275 040
3.00	BC DPRI4N 150 300 010	BC DPRI4N 150 300 015	BC DPRI4N 150 300 020	BC DPRI4N 150 300 025	BC DPRI4N 150 300 030	BC DPRI4N 150 300 040
3.25	BC DPRI4N 150 325 010	BC DPRI4N 150 325 015	BC DPRI4N 150 325 020	BC DPRI4N 150 325 025	BC DPRI4N 150 325 030	BC DPRI4N 150 325 040
3.50	BC DPRI4N 150 350 010	BC DPRI4N 150 350 015	BC DPRI4N 150 350 020	BC DPRI4N 150 350 025	BC DPRI4N 150 350 030	BC DPRI4N 150 350 040
3.75	BC DPRI4N 150 375 010	BC DPRI4N 150 375 015	BC DPRI4N 150 375 020	BC DPRI4N 150 375 025	BC DPRI4N 150 375 030	BC DPRI4N 150 375 040
4.00	BC DPRI4N 150 400 010	BC DPRI4N 150 400 015	BC DPRI4N 150 400 020	BC DPRI4N 150 400 025	BC DPRI4N 150 400 030	BC DPRI4N 150 400 040
4.50	BC DPRI4N 150 450 010	BC DPRI4N 150 450 015	BC DPRI4N 150 450 020	BC DPRI4N 150 450 025	BC DPRI4N 150 450 030	BC DPRI4N 150 450 040

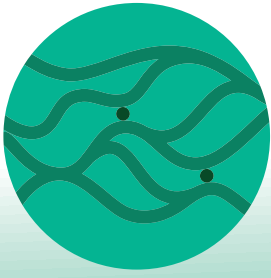
The availability of each reference for the sale is linked to the authorization of commercialization in the country of destination

Distributed by:



Manufactured by:

Life Vascular Devices Biotech S.L  
[www.ivascular.global](http://www.ivascular.global)  
[info@ivascular.global](mailto:info@ivascular.global)



# iNtercept

Stent retriever

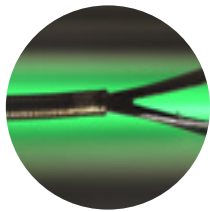
Designed to restore the blood flow



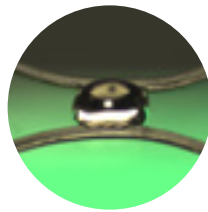


## Accuracy in the implantation

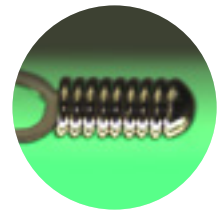
Excellent visibility with:



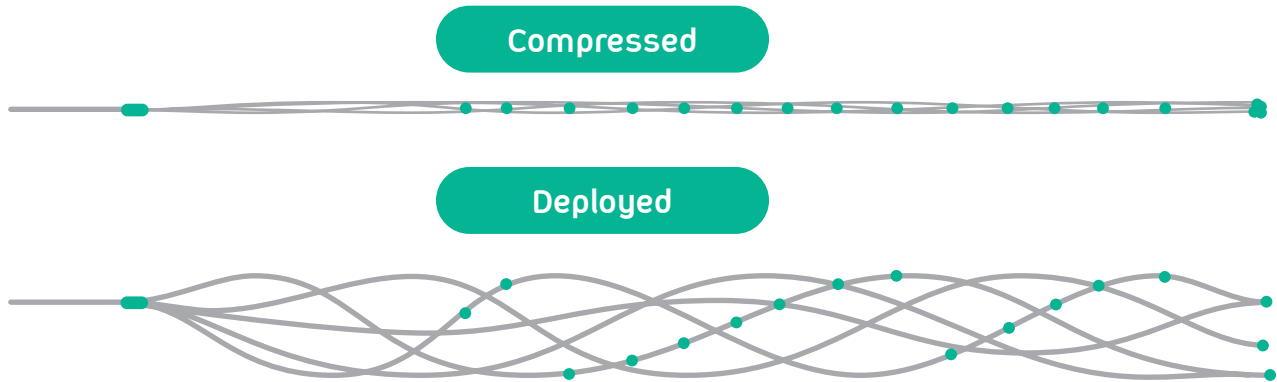
1 Proximal gold marker



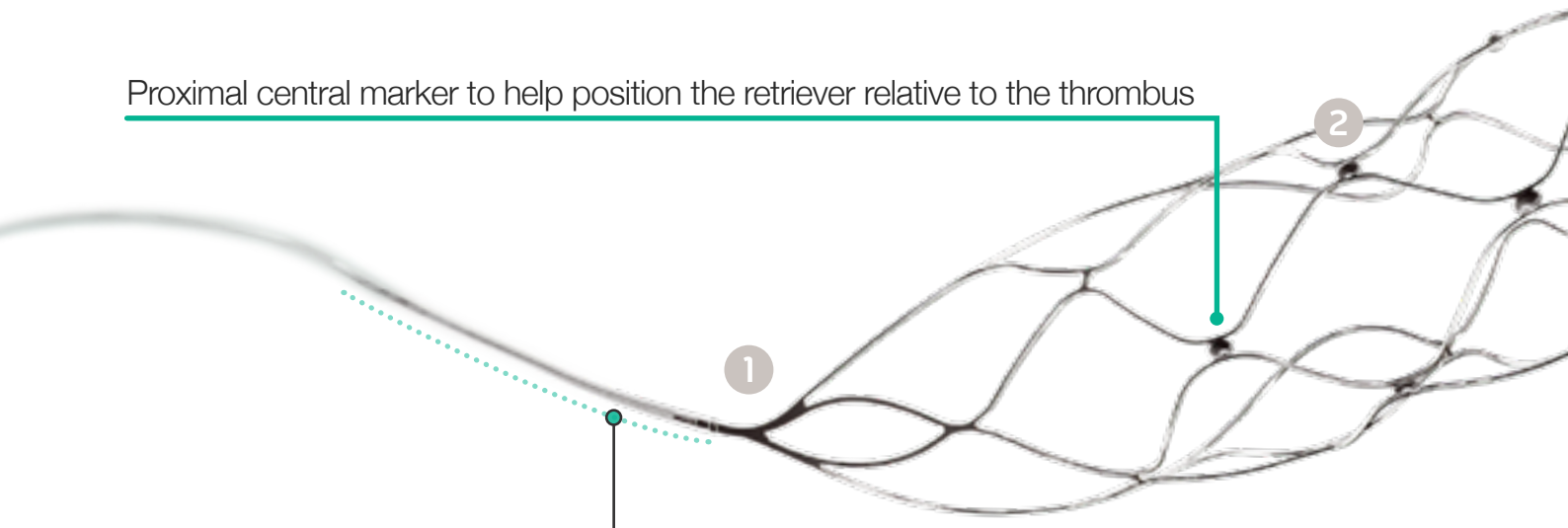
2 Central gold markers arranged in a helical pattern along the length of the basket

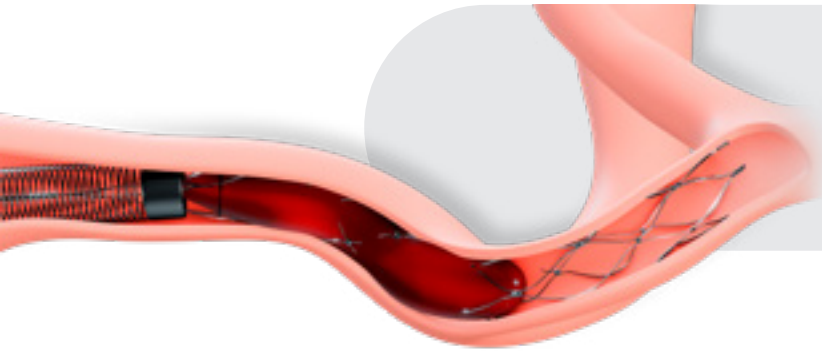


3 Distal platinum markers



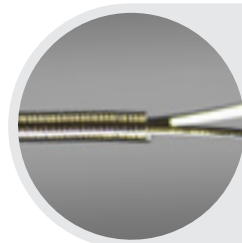
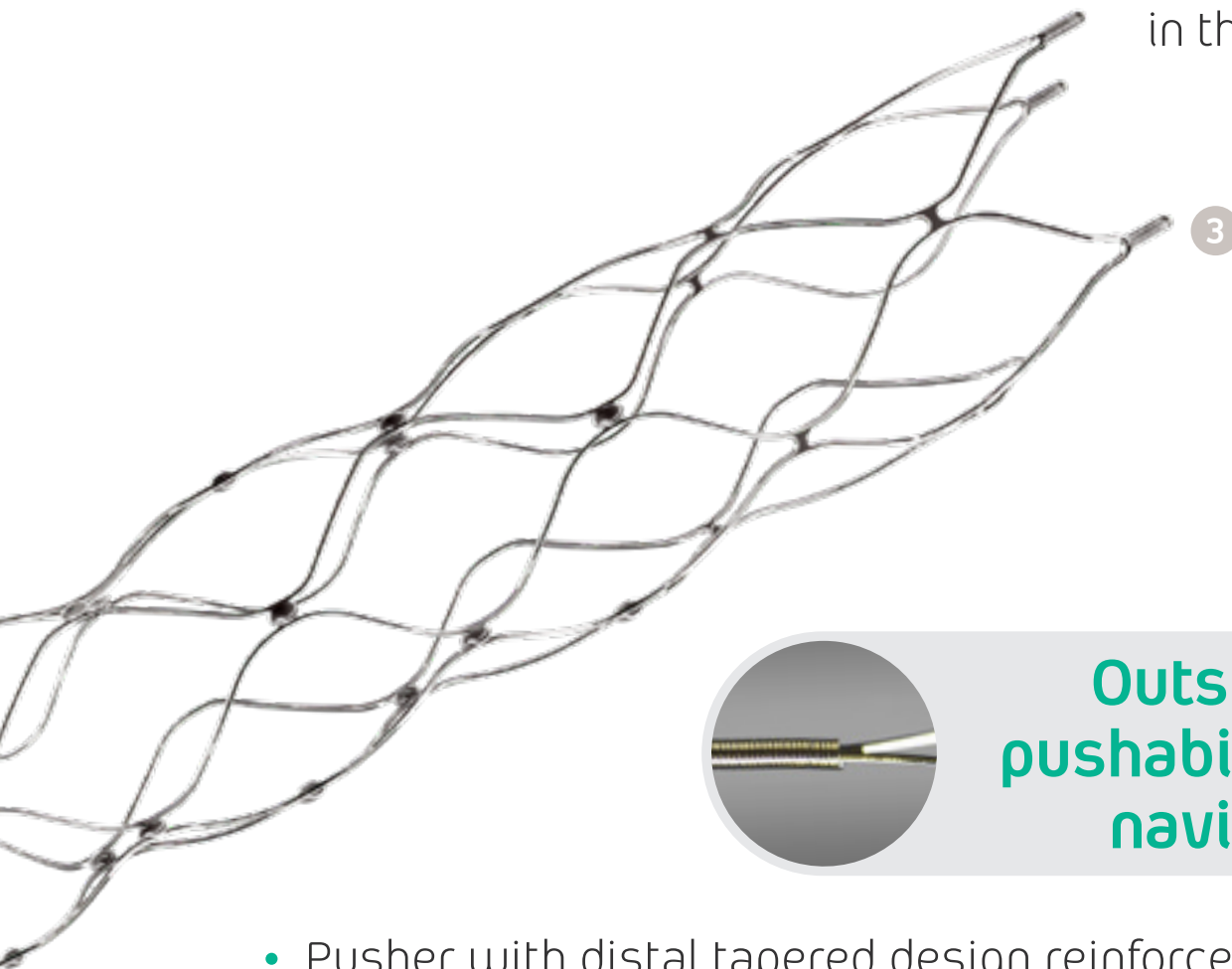
Proximal central marker to help position the retriever relative to the thrombus





## Excellent conformability

- The axial slit allows a high adaptability
- Closed cells ensure optimal apposition in the removal



## Outstanding pushability and navigability

- Pusher with distal tapered design reinforced by a coil
- Two pushers designed for the different vessels to be treated



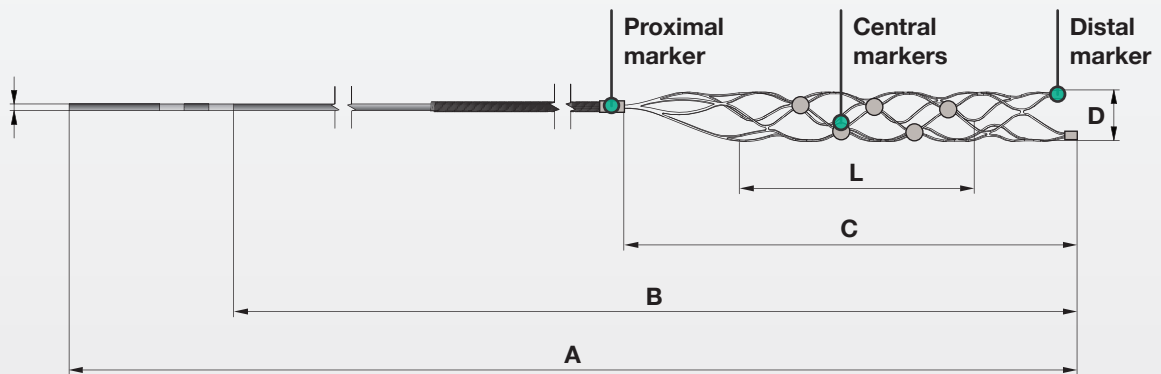
# iNtercept features

- > Self-expandable nitinol basket
- > Closed cells
- > Distal radiopaque markers:  
Platinum coil → 2 markers in 3mm diameter and 3 markers in diameters 4 and 6mm
- > Central gold radiopaque markers along the basket

- > Proximal gold radiopaque marker at the junction of the pusher and the basket
- > Tapered pusher design at distal level reinforced by a stainless steel coil

## Includes

- Torque device



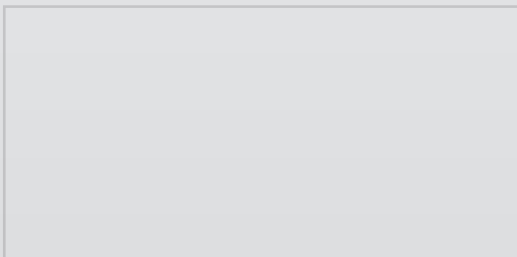
CE mark product. Certified by Notified Body 0318

iNtercept							
References	Nominal size					Microcatheter compatibility (inches)	Vessel to treat (maximum Ø) (mm)
	A (cm)	B (cm)	C (mm)	D (mm)	L (mm)		
DETNS195030015	195	152	28	3	15	0,017	2,5
DETNS195030020	195	152	32	3	20	0,017	2,5
DETNS195040020	195	152	33	4	20	0,021	3,5
DETNS195040030	195	152	42	4	30	0,021	3,5
DETNS195060030	195	153	53	6	30	0,021 / 0,027	5,5
DETNS195060050	195	155	69	6	50	0,021 / 0,027	5,5



The availability of each reference for sale is linked to the marketing authorisation in the country of destination

Distributed by:



Manufactured by:

Life Vascular Devices Biotech S.L  
www.ivascular.global  
info@ivascular.global

**iVascular**<sup>®</sup>  
therapies for living

# iVolution pro

Self-expanding peripheral stent system

Quality as first option



**New**  
delivery  
system



[www.ivascular.global](http://www.ivascular.global)

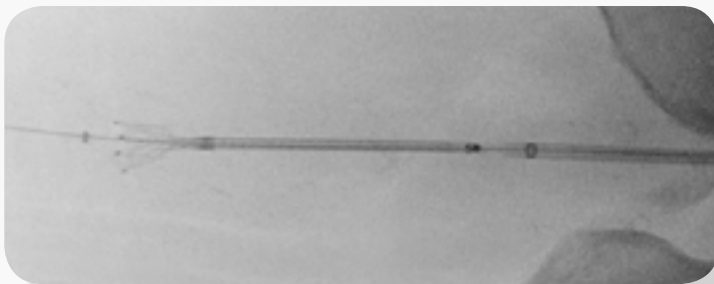
# New delivery

Simple and controlled stent deployment

No jumping effect

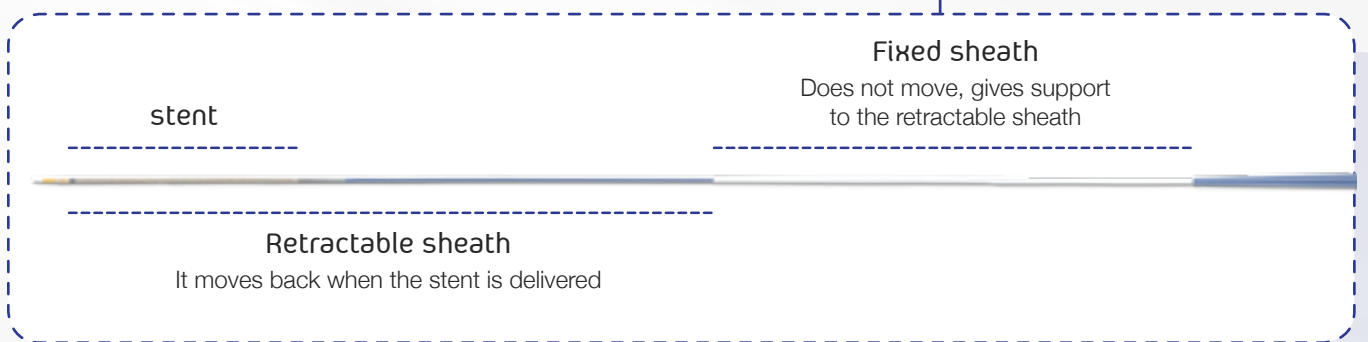
## Optimum visibility

- 2 markers delimiting the stent
- 1 tungsten marker in the retractable sheath indicating the implantation level



## Triple sheath design

to control deployment forces and facilitate precise placement



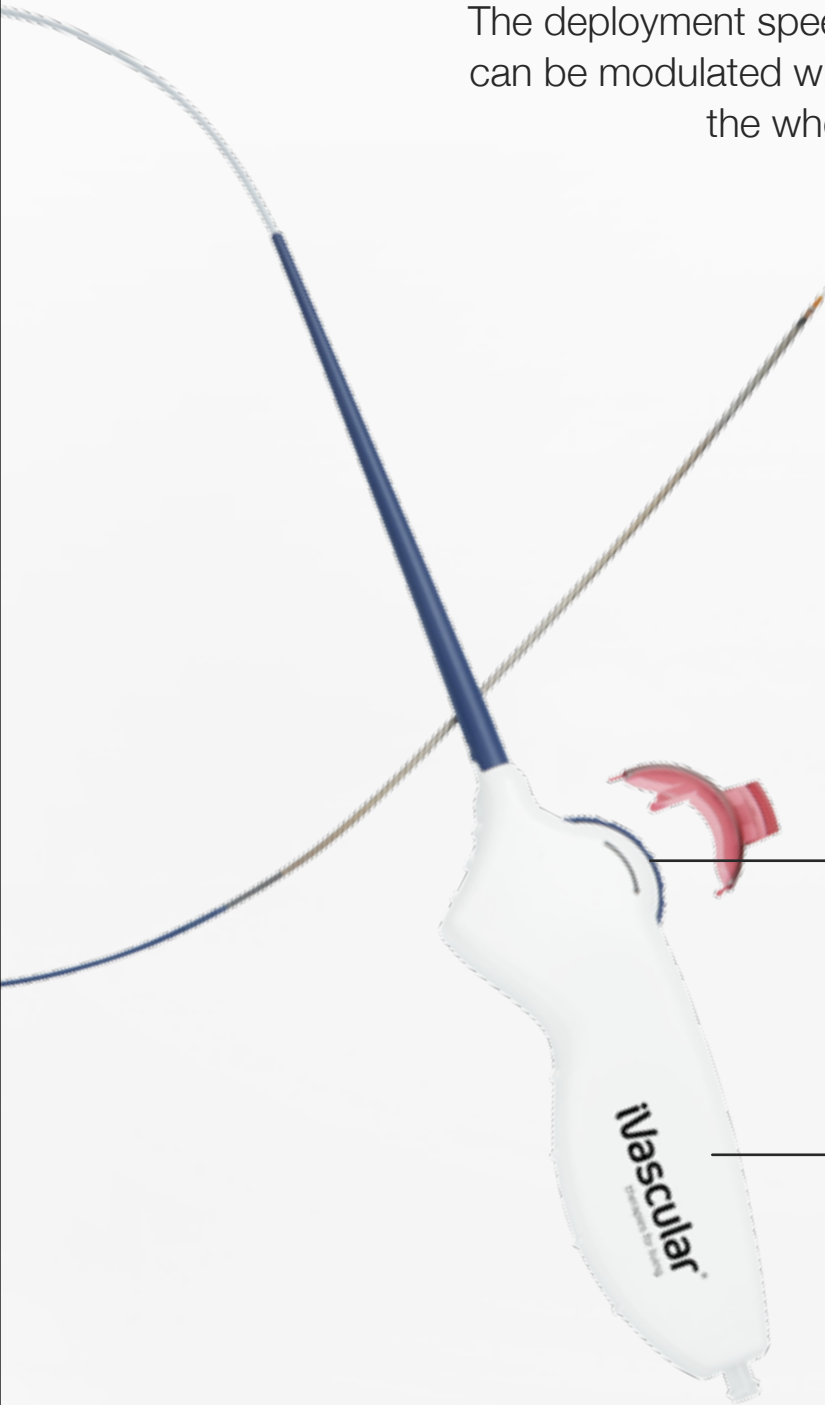
\*iVascular internal data



# ery system

## Controlled deployment

The deployment speed can be modulated with the wheel



## Ergonomic and small handle

10cm shorter than main competitors\*

# Stent quality

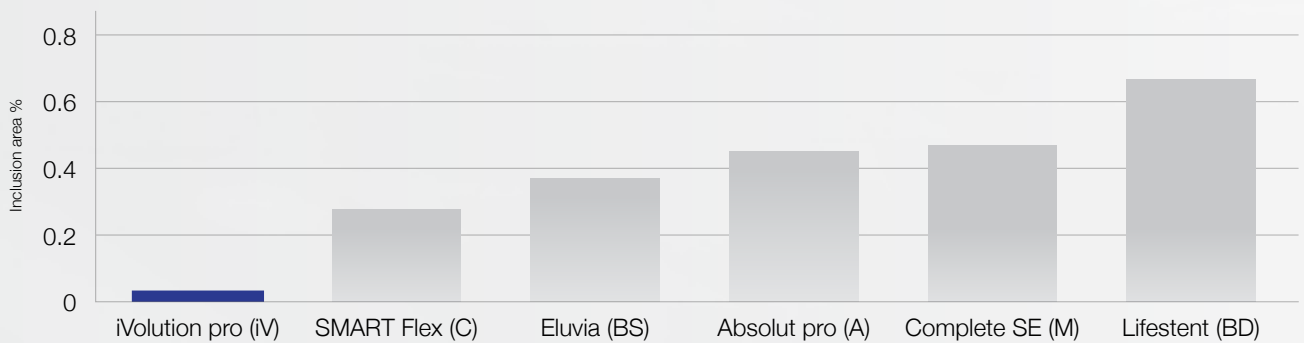
Quality assured to avoid stent fracture

100% of stents checked



No reported stent fractures in the EVOLUTION trial at 1-year<sup>1</sup>

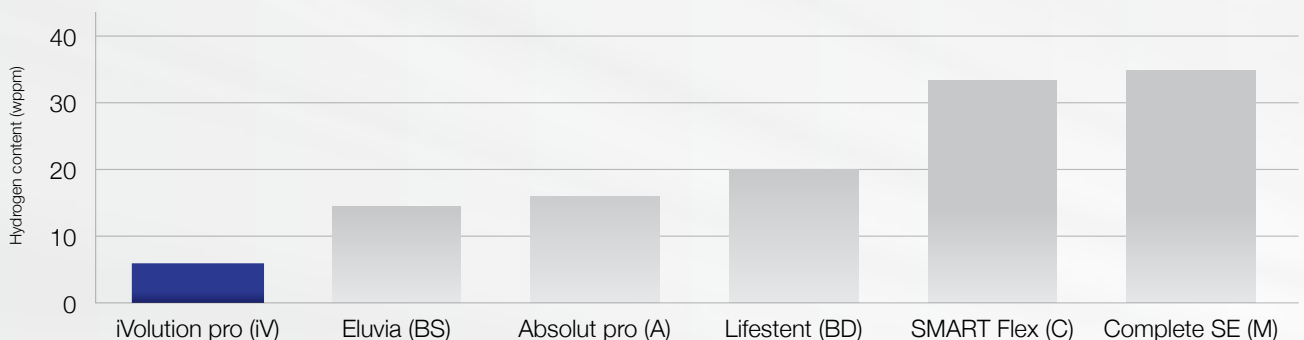
Best corrosion resistance and lowest inclusion fraction reported<sup>2</sup>



**Inclusions** are small particles inside the nitinol matrix. They are known as a fatigue starting points

Highest elastic recovery & minimum brittleness

Hydrogen in stent can suppress elastic recovery and promote brittleness. iVolution pro is the stent with lowest hydrogen content<sup>3</sup>

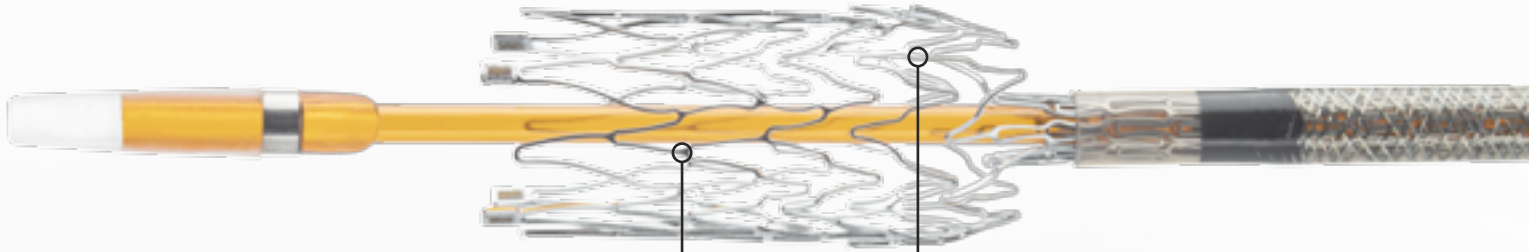


<sup>1</sup> M Bosiers et al. EVOLUTION Study: 12-month results. 2019 Aug;60(4):490-495.

<sup>2</sup> F Sun et al. On the High Sensitivity of Corrosion Resistance of NiTi Stents with Respect to Inclusions: An Experimental Evidence, ACS Omega, 2020

<sup>3</sup> F Sun et al. Revisiting the effects of low-concentration hydrogen in NiTi self-expandable stents. Materials Science & Engineering C 118 (2021) 111405

# Stent design



## Resistance

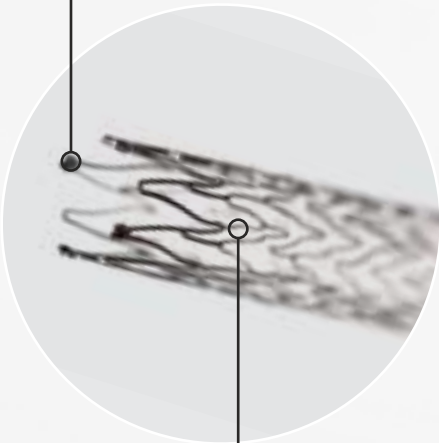
Stress homogeneously distributed to avoid stent fracture

## Flexibility

Open cell design to offer the highest flexibility

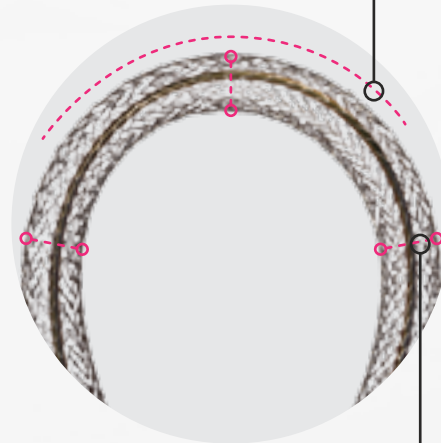
## Visibility

4 tantalum markers at each end



## No flaking

Avoids vessel wall damage



## No jumping effect

Closed cell design ends for deployment stability

## Anti-kinking

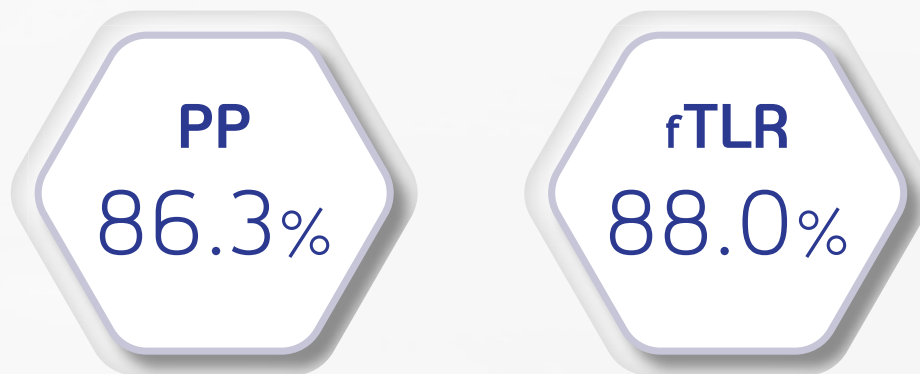
Maintains inner lumen

# Clinical e

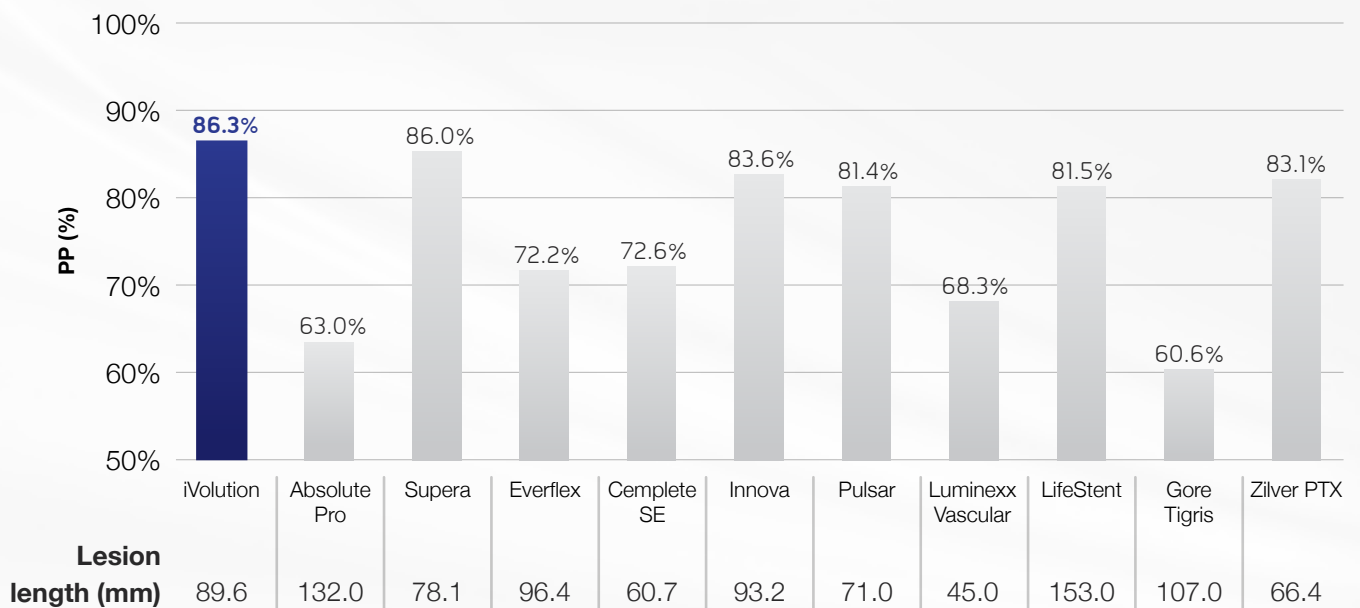
## Highest efficacy outcomes

### EVOLUTION Trial<sup>1</sup>

- Physician-initiated, prospective, and multicentric trial, investigating the efficacy of iVolution
- PI: Dr Marc Bosiers
- N:120 patients
- Symptomatic (Rutherford 2-4) femoropopliteal arterial stenotic or occlusive lesions.
- Follow-up: 1 year



Primary patency comparison



# evidence

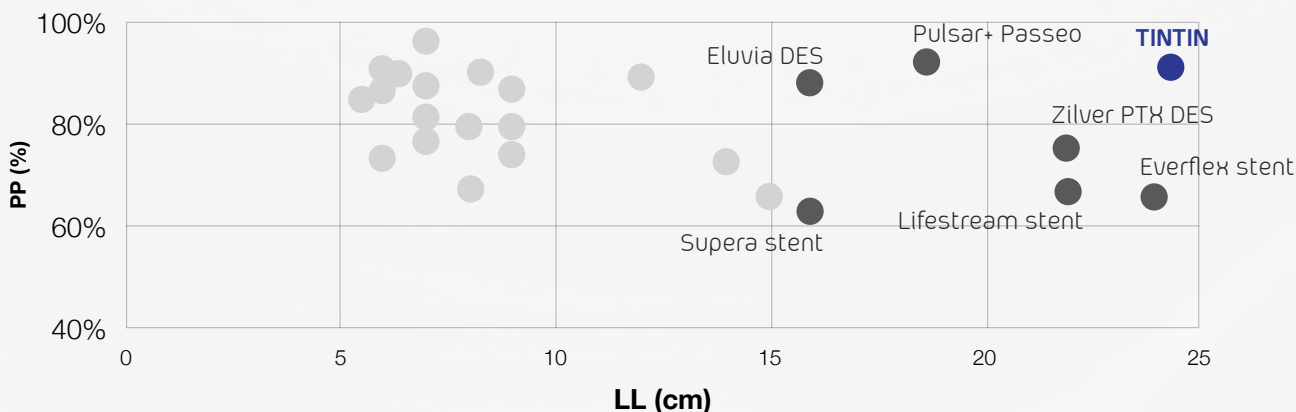
## in femoropopliteal arteries

### TINTIN Trial (1-year follow-up)<sup>2</sup>

- Physician initiated, prospective, multi-center trial, investigating the safety and efficacy of the treatment with Luminor and iVolution
- PI: Dr Koen Deloose
- N: 100 patients
- TASC C and D femoropopliteal atherosclerotic lesions
- Follow-up: 1, 2, 3, 4 and 5 years



Comparison of main lesion length vs PP at 1-year follow up between 26 trials

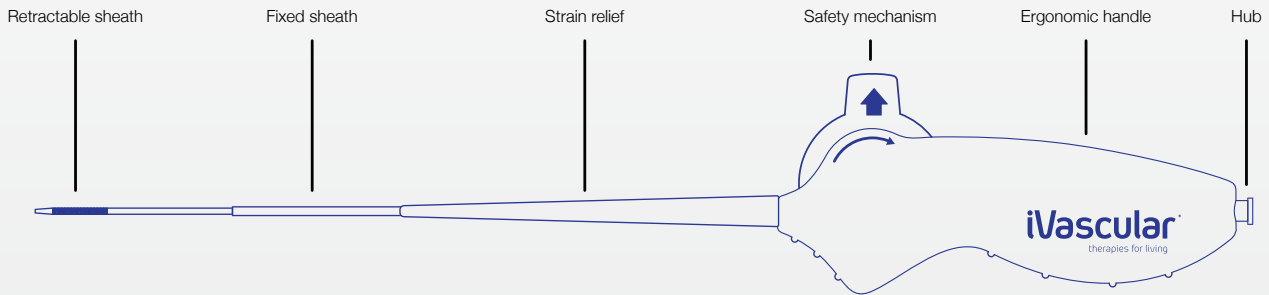


<sup>1</sup> M Bosiers et al. EVOLUTION Study: 12-month results. 2019 Aug;60(4):490-495. <sup>2</sup> K Deloose. LINC 2020 presentation



# iVolution pro features

- > **Triple sheath** catheter
- > Catheter length: **80** and **130** cm
- > Introducer compatibility: **6F**
- > Guiding catheter compatibility: **8F**
- > Portfolio:
  - Ø: 5-10mm
  - Length: 40-200mm
- > Guidewire compatibility: **0.035"**



Product with CE mark, certified by Notified Body 0318

Usable catheter length (cm)	Stent Diameter (mm)	Stent length (mm)					
		40	60	80	100	150	200
80	5	SPNBC35N080050040	SPNBC35N080050060	SPNBC35N080050080	SPNBC35N080050100	SPNBC35N080050150	SPNBC35N080050200
	6	SPNBC35N080060040	SPNBC35N080060060	SPNBC35N080060080	SPNBC35N080060100	SPNBC35N080060150	SPNBC35N080060200
	7	SPNBC35N080070040	SPNBC35N080070060	SPNBC35N080070080	SPNBC35N080070100	SPNBC35N080070150	SPNBC35N080070200
	8	SPNBC35N080080040	SPNBC35N080080060	SPNBC35N080080080	SPNBC35N080080100	SPNBC35N080080150	-
	9	SPNBC35N080090040	SPNBC35N080090060	SPNBC35N080090080	SPNBC35N080090100	-	-
	10	SPNBC35N080100040	SPNBC35N080100060	SPNBC35N080100080	SPNBC35N080100100	-	-
130	5	SPNBC35N130050040	SPNBC35N130050060	SPNBC35N130050080	SPNBC35N130050100	SPNBC35N130050150	SPNBC35N130050200
	6	SPNBC35N130060040	SPNBC35N130060060	SPNBC35N130060080	SPNBC35N130060100	SPNBC35N130060150	SPNBC35N130060200
	7	SPNBC35N130070040	SPNBC35N130070060	SPNBC35N130070080	SPNBC35N130070100	SPNBC35N130070150	SPNBC35N130070200
	8	SPNBC35N130080040	SPNBC35N130080060	SPNBC35N130080080	SPNBC35N130080100	SPNBC35N130080150	-
	9	SPNBC35N130090040	SPNBC35N130090060	SPNBC35N130090080	SPNBC35N130090100	-	-
	10	SPNBC35N130100040	SPNBC35N130100060	SPNBC35N130100080	SPNBC35N130100100	-	-

The availability of each reference for the sale is linked to the authorization of commercialization in the country of destination

Introducer compatibility: **6F**

Distributed by:



Manufactured by:

**Life Vascular Devices Biotech S.L**  
[www.ivascular.global](http://www.ivascular.global)  
[info@ivascular.global](mailto:info@ivascular.global)

# iCover

Peripheral balloon expandable  
PTFE covered stent system

Designed to  
cover all needs



[www.ivascular.global](http://www.ivascular.global)

**iVascular**<sup>®</sup>  
therapies for living

# Able to treat the most tortuous arteries

## iCover

Designed to cover all needs

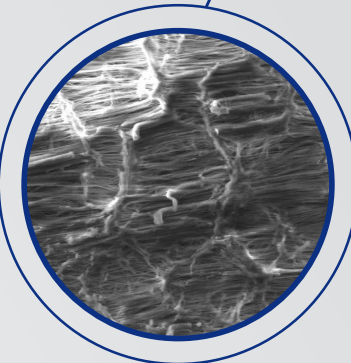
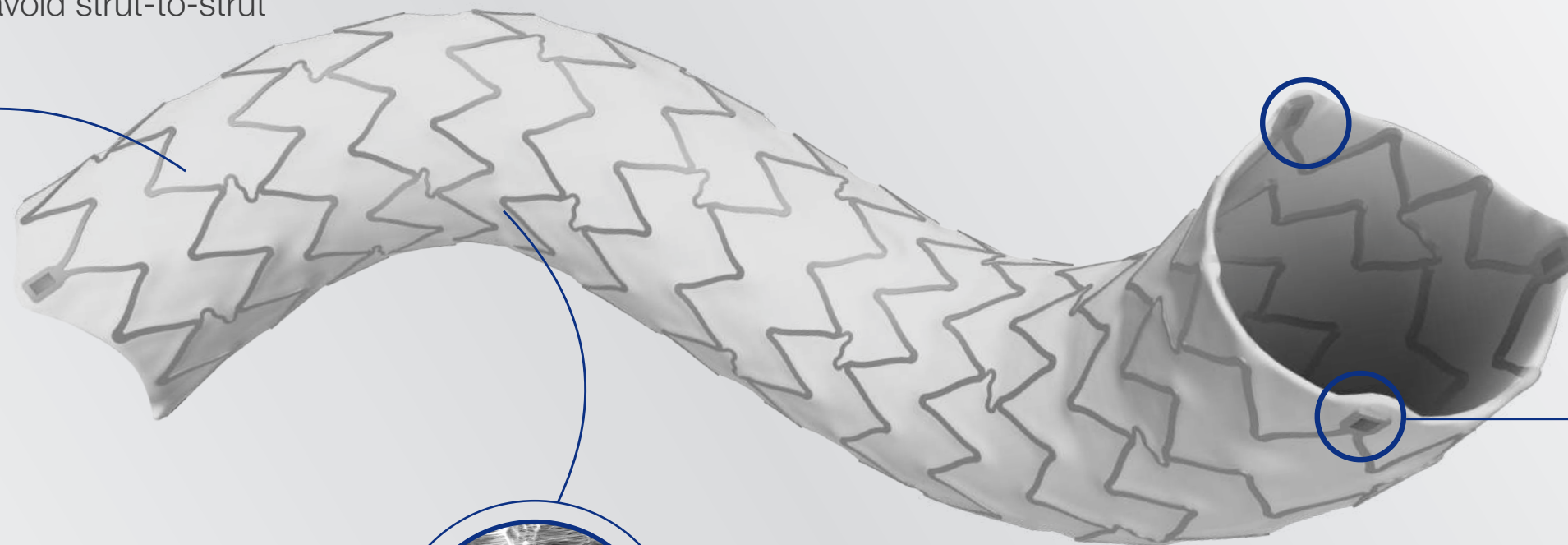
### Enhanced visibility

Unique stent with radiopaque markers to facilitate the implantation and the post-dilation

### ePTFE covered stent with high flexibility

Due to:

- Open cell design and alternated links
- Nested peaks to avoid strut-to-strut contact



### Best in class post-expansion capacity ( $\geq 2\text{mm}$ )

High ePTFE porosity to ensure covered stent post-expansion capacity



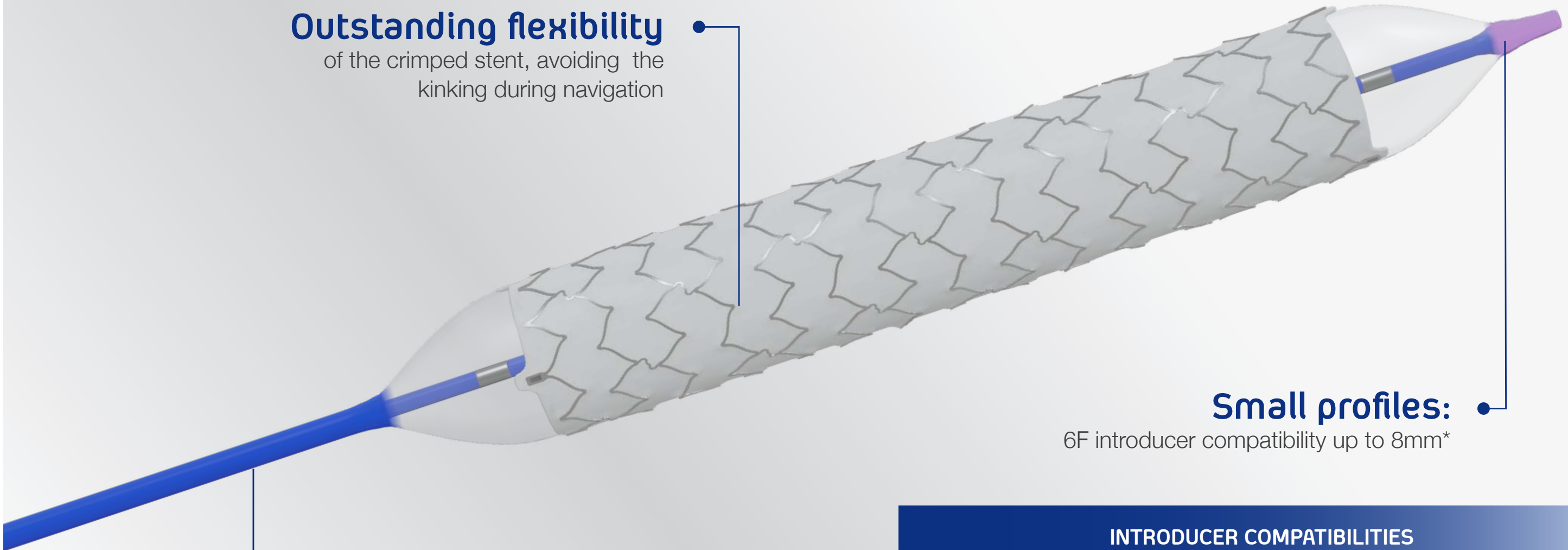
		MAXIMUM POST-EXPANSION DIAMETERS						
STENT DIMENSIONS		STENT DIAMETERS (mm)						
		5	6	7	8	9	10	
STENT LENGTH (mm)	17	$\leq 10\text{mm}$					$\leq 12\text{mm}$	
	27							
	37							
	57							

# Excellent navigability and easy to implant

**iCover**  
Designed to cover all needs

## Outstanding flexibility

of the crimped stent, avoiding the kinking during navigation



## Small profiles:

6F introducer compatibility up to 8mm\*

## Crimped on an Oceanus 35 PTA balloon, offering:

- Short deflation times
- Good pushability and trackability

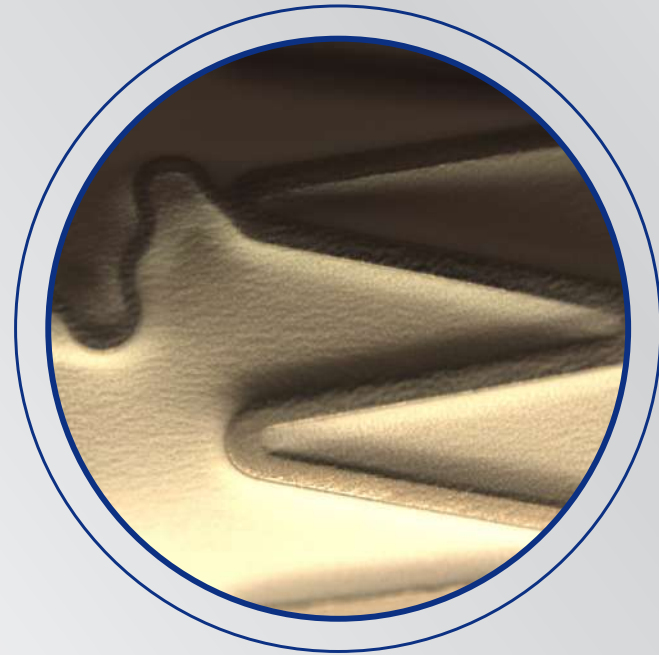
		INTRODUCER COMPATIBILITIES					
STENT DIMENSIONS		STENT DIAMETERS (mm)					
		5	6	7	8	9	10
STENT LENGTH (mm)	17	6F				7F	
	27						
	37						
	57						

\* 6F up to 8x17 mm and 7F from 8x27mm up to 10 mm.



# iVascular proprietary encapsulation technology

**iCover**  
Designed to cover all needs



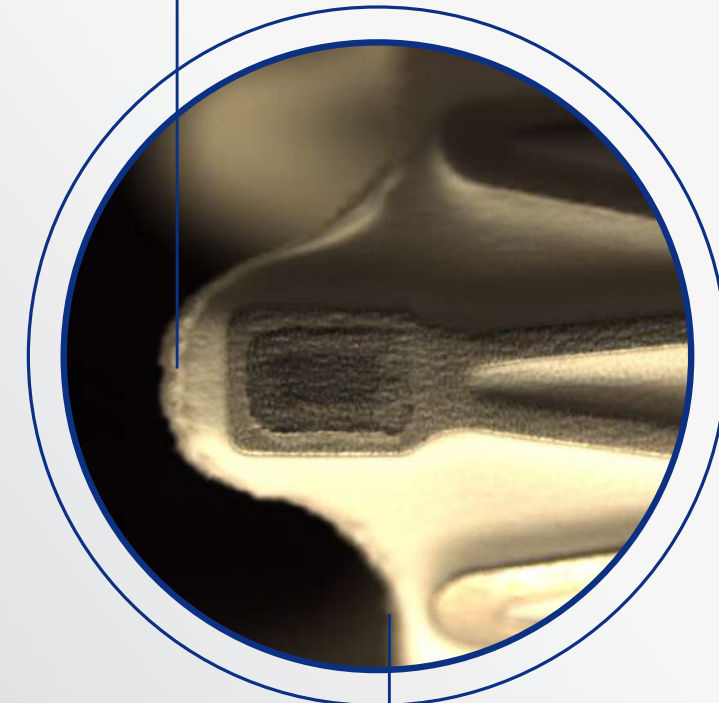
## Encapsulation technology

iCover is a stent completely encapsulated with 2 ePTFE layers



## Specific ePTFE laser cutting technology

• Perfect sealing



The laser follows the stent outline while cutting the contour



Proprietary technology to encapsulate the stent into an inner and outer ePTFE layer

**Ensures complete encapsulation avoiding delamination**

# iCover features

- > Over the wire catheter (OTW)
- > Guidewire compatibility: **0.035"**
- > Catheter length: **80** and **140** cm
- > NP: 9 atm
- > RBP:
  - Ø 5-7mm: 15 atm
  - Ø 8mm: 14 atm
  - Ø 9-10mm: 13 atm
- > Maximum post-expansion:
  - Ø 5-8mm: ≤10mm
  - Ø 9-10mm: ≤ 12mm
- > CoverTech encapsulation technology
- > Introducer compatibility  
**6F** (up to Ø8mm, L 17mm), **7F** (≥8mmØ, L27mm)
- > **3 radiopaque markers** at each stent end
- > Stent material: CoCr L605
- > Graft material: ePTFE
- > Recoil: ≤ 10 %
- > Shortening:
  - Length 17mm: ≤ 12 %
  - Length 57mm: ≤ 8 %

Product with CE mark, certified by Notified Body 0318

Effective catheter length (cm)	Stent diameter (mm)	Stent length (mm)			
		17	27	37	57
80	5	SPCBCC35080050017	SPCBCC35080050027	SPCBCC35080050037	SPCBCC35080050057
	6	SPCBCC35080060017	SPCBCC35080060027	SPCBCC35080060037	SPCBCC35080060057
	7	SPCBCC35080070017	SPCBCC35080070027	SPCBCC35080070037	SPCBCC35080070057
	8	SPCBCC35080080017	SPCBCC35080080027	SPCBCC35080080037	SPCBCC35080080057
	9		SPCBCC35080090027	SPCBCC35080090037	SPCBCC35080090057
	10		SPCBCC35080100027	SPCBCC35080100037	SPCBCC35080100057
140	5	SPCBCC35140050017	SPCBCC35140050027	SPCBCC35140050037	SPCBCC35140050057
	6	SPCBCC35140060017	SPCBCC35140060027	SPCBCC35140060037	SPCBCC35140060057
	7	SPCBCC35140070017	SPCBCC35140070027	SPCBCC35140070037	SPCBCC35140070057
	8	SPCBCC35140080017	SPCBCC35140080027	SPCBCC35140080037	SPCBCC35140080057
	9		SPCBCC35140090027	SPCBCC35140090037	SPCBCC35140090057
	10		SPCBCC35140100027	SPCBCC35140100037	SPCBCC35140100057

- Introducer compatibility: **6F**
- Introducer compatibility: **7F**

Distributed by:



Manufactured by:  
Life Vascular Devices Biotech, S.L  
[www.ivascular.global](http://www.ivascular.global)  
[info@ivascular.global](mailto:info@ivascular.global)



# NC xperience

Coronary balloon dilatation catheter

**RBP up to 20 atm**  
Perfect for post-dilatation

**The best tip profile**  
on the market

Ultra-low  
**crossing profile**

to cross through stent struts  
and calcified lesions

Outstanding  
**trackability**

excellent pushability  
and flexibility

**HYDRAX**



Hydrophilic  
durable coating



## Kissing balloon technique 6F compatible

The low transition profile between the hypotube and the distal shaft allows 6F kissing balloon technique



## Indications:

- All types of dilatation even the most calcified lesions requiring high pressure inflations to improve myocardial perfusion
- Stent post dilatation to enhance stent artery wall apposition and improve angiographic results

# NC xperience features

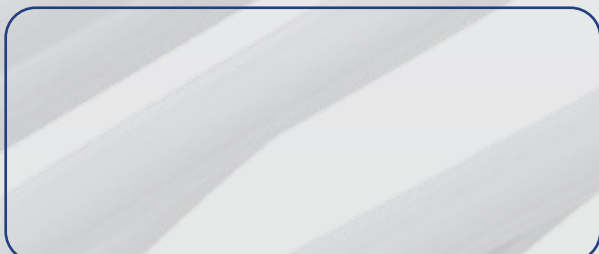
- > Rapid Exchange catheter (RX)
- > Compatible with **0.014"** guidewire
- > Compatible with **5F** guiding catheter
- > Nominal pressure: **12 atm** | ABP: **25 atm**
- > RBP: **20 atm** ( $\varnothing < 4.50\text{mm}$ ) **18 atm** ( $\varnothing \geq 4.50\text{mm}$ )
- > Tip profile: **0.016"**
- > Balloon crossing profile: **from 0.029" up to 0.037"**
- > **2 metallic platinum iridium radiopaque markers**
- > **Compliance: 7% max**
- > **Deflation rate: 3s average**

Product with CE mark, certified by Notified Body 0318

Balloon diameter (mm)	Usable catheter length: 142 cm							
	Balloon length (mm)							
	6	8	10	12	15	20	25	30
2.00	BC TRI4 150 200 006	BC TRI4 150 200 008	BC TRI4 150 200 010	BC TRI4 150 200 012	BC TRI4 150 200 015	BC TRI4 150 200 020	BC TRI4 150 200 025	BC TRI4 150 200 030
2.25	BC TRI4 150 225 006	BC TRI4 150 225 008	BC TRI4 150 225 010	BC TRI4 150 225 012	BC TRI4 150 225 015	BC TRI4 150 225 020	BC TRI4 150 225 025	BC TRI4 150 225 030
2.50	BC TRI4 150 250 006	BC TRI4 150 250 008	BC TRI4 150 250 010	BC TRI4 150 250 012	BC TRI4 150 250 015	BC TRI4 150 250 020	BC TRI4 150 250 025	BC TRI4 150 250 030
2.75	BC TRI4 150 275 006	BC TRI4 150 275 008	BC TRI4 150 275 010	BC TRI4 150 275 012	BC TRI4 150 275 015	BC TRI4 150 275 020	BC TRI4 150 275 025	BC TRI4 150 275 030
3.00	BC TRI4 150 300 006	BC TRI4 150 300 008	BC TRI4 150 300 010	BC TRI4 150 300 012	BC TRI4 150 300 015	BC TRI4 150 300 020	BC TRI4 150 300 025	BC TRI4 150 300 030
3.25	BC TRI4 150 325 006	BC TRI4 150 325 008	BC TRI4 150 325 010	BC TRI4 150 325 012	BC TRI4 150 325 015	BC TRI4 150 325 020	BC TRI4 150 325 025	BC TRI4 150 325 030
3.50	BC TRI4 150 350 006	BC TRI4 150 350 008	BC TRI4 150 350 010	BC TRI4 150 350 012	BC TRI4 150 350 015	BC TRI4 150 350 020	BC TRI4 150 350 025	BC TRI4 150 350 030
3.75	BC TRI4 150 375 006	BC TRI4 150 375 008	BC TRI4 150 375 010	BC TRI4 150 375 012	BC TRI4 150 375 015	BC TRI4 150 375 020	BC TRI4 150 375 025	BC TRI4 150 375 030
4.00	BC TRI4 150 400 006	BC TRI4 150 400 008	BC TRI4 150 400 010	BC TRI4 150 400 012	BC TRI4 150 400 015	BC TRI4 150 400 020	BC TRI4 150 400 025	BC TRI4 150 400 030
4.50	BC TRI4 150 450 006	BC TRI4 150 450 008	BC TRI4 150 450 010	BC TRI4 150 450 012	BC TRI4 150 450 015	BC TRI4 150 450 020		
5.00	BC TRI4 150 500 006	BC TRI4 150 500 008	BC TRI4 150 500 010	BC TRI4 150 500 012	BC TRI4 150 500 015	BC TRI4 150 500 020		

The availability of each reference for the sale is linked to the authorization of commercialization in the country of destination

Distributed by:



Manufactured by:

Life Vascular Devices Biotech S.L  
[www.ivascular.global](http://www.ivascular.global)  
[info@ivascular.global](mailto:info@ivascular.global)

# iVascular<sup>®</sup>

therapies for living

## oceanus 14 pro

PTA balloon dilatation catheter

To reach the **most challenging** lesions  
with the **highest visibility**

Best flexibility  
and trackability\*

Smallest balloon  
diameters

Enhanced  
visibility\*

Lowest  
profiles



Proprietary hydrophilic  
durable coating



[www.ivascular.global](http://www.ivascular.global)

# oceanus 14 pro features

* Radiopaque markers	
	$\varnothing \leq 2.0\text{mm}$ , Length $\leq 20\text{mm}$ : 1 tungsten marker
	$\varnothing \leq 2.0\text{mm}$ , Length $> 20\text{mm}$ : 2 tungsten markers
	$\varnothing \geq 2.5\text{mm}$ : 2 Pt/Ir markers

- > Over the wire catheter (OTW)
- > Usable Catheter length: 100 cm & 150 cm
- > Guidewire compatibility: 0.014"
- > Tip profile: 0.017"
- > Crossing profile: 0.021" to 0.033"
- > Nominal pressure: 7 atm
- > Rated Burst Pressure (RBP): 16 atm
- > Average Burst Pressure (ABP): 22 atm

Product with CE mark, certified by Notified Body 0318

Usable catheter length	Balloon $\varnothing$ (mm)	Balloon Length (mm)								
		10	15	20	40	60	80	120	150	200
100 cm	1.25	BP PC14N 100 125 010	BP PC14N 100 125 015	BP PC14N 100 125 020	-	-	-	-	-	-
	1.5	BP PC14N 100 150 010	BP PC14N 100 150 015	BP PC14N 100 150 020	BP PC14N 100 150 040	BP PC14N 100 150 060	BP PC14N 100 150 080	-	-	-
	2.0	BP PC14N 100 200 010	BP PC14N 100 200 015	BP PC14N 100 200 020	BP PC14N 100 200 040	BP PC14N 100 200 060	BP PC14N 100 200 080	BP PC14N 100 200 120	BP PC14N 100 200 150	BP PC14N 100 200 200
	2.5	-	-	-	BP PC14N 100 250 040	BP PC14N 100 250 060	BP PC14N 100 250 080	BP PC14N 100 250 120	BP PC14N 100 250 150	BP PC14N 100 250 200
	3.0	-	-	-	BP PC14N 100 300 040	BP PC14N 100 300 060	BP PC14N 100 300 080	BP PC14N 100 300 120	BP PC14N 100 300 150	BP PC14N 100 300 200
	3.5	-	-	-	BP PC14N 100 350 040	BP PC14N 100 350 060	BP PC14N 100 350 080	BP PC14N 100 350 120	BP PC14N 100 350 150	BP PC14N 100 350 200
	4.0	-	-	-	BP PC14N 100 400 040	BP PC14N 100 400 060	BP PC14N 100 400 080	BP PC14N 100 400 120	-	-
150 cm	1.25	BP PC14N 150 125 010	BP PC14N 150 125 015	BP PC14N 150 125 020	-	-	-	-	-	-
	1.5	BP PC14N 150 150 010	BP PC14N 150 150 015	BP PC14N 150 150 020	BP PC14N 150 150 040	BP PC14N 150 150 060	BP PC14N 150 150 080	-	-	-
	2.0	BP PC14N 150 200 010	BP PC14N 150 200 015	BP PC14N 150 200 020	BP PC14N 150 200 040	BP PC14N 150 200 060	BP PC14N 150 200 080	BP PC14N 150 200 120	BP PC14N 150 200 150	BP PC14N 150 200 200
	2.5	-	-	-	BP PC14N 150 250 040	BP PC14N 150 250 060	BP PC14N 150 250 080	BP PC14N 150 250 120	BP PC14N 150 250 150	BP PC14N 150 250 200
	3.0	-	-	-	BP PC14N 150 300 040	BP PC14N 150 300 060	BP PC14N 150 300 080	BP PC14N 150 300 120	BP PC14N 150 300 150	BP PC14N 150 300 200
	3.5	-	-	-	BP PC14N 150 350 040	BP PC14N 150 350 060	BP PC14N 150 350 080	BP PC14N 150 350 120	BP PC14N 150 350 150	BP PC14N 150 350 200
	4.0	-	-	-	BP PC14N 150 400 040	BP PC14N 150 400 060	BP PC14N 150 400 080	BP PC14N 150 400 120	-	-

The availability of each reference for the sale is linked to the authorization of commercialization in the country of destination

● Introducer compatibility: 4F

Distributed by:



Manufactured by:

Life Vascular Devices Biotech, S.L.  
www.ivascular.global  
info@ivascular.global