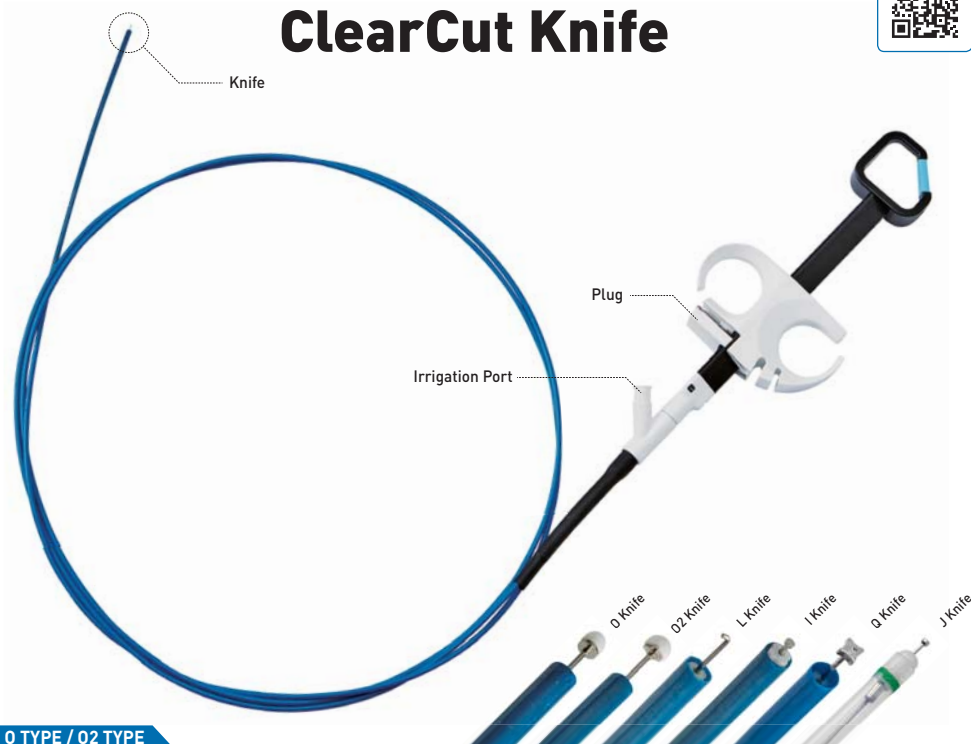


ESD

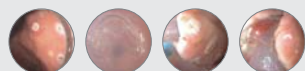
ClearCut Knife



O TYPE / O2 TYPE



- **Ceramic Head:** The ceramic head prevents excessive incision.
- **Cauterization:** The released disc at ceramic head tip enables the marking at targeted lesion.
- **Hybrid Functions:** Marking, Incision, Dissection, and Hemostasis are all possible.



L TYPE



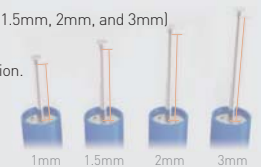
- **Hemostasis:** Minor bleeding hemostasis is possible.
- **Rotatable Tip:** The Knife tip rotate at a 1:1 ratio with the handle.
- **Applicable Lesion:** L type knife can be used for both Upper and Lower GI.



I TYPE



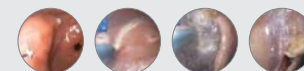
- **Various Electrode Length:** The electrode comes in various lengths (1mm, 1.5mm, 2mm, and 3mm) for customer's preference.
- **Meticulous Procedure:** Surgeon can perform delicate incision and dissection.
- **Enhanced Safety:** short electrode reduces the possibility of perforation.



Q TYPE



- **Hybrid Functions:** Marking, Incision, Dissection, and Hemostasis are all possible with this knife.
- **Easy Operation:** Access to lesion is convenient by its four angulated tip.
- **Wide Coagulation Area:** Four angulated tip makes wide coagulation area.



J TYPE



- **Lifting the submucosal layer with Finemedix J Knife**
During the ESD procedure, User could lift the submucosal layers with this knife and syringe. Special designed structure could flush the solution with high pressure into the submucosal layer.
- **Strengthening the Safety of ESD Procedure**
Users don't need to exchange the accessories for additional lifting the lesion. So User could focus on proceeding it. This feature strengthens the safety and reduces the anxiety of users.
- **Hybrid Functions**
Marking, Incision, Dissection, Hemostasis and flushing solutions even hyaluronic acid are all possible with only this knife.

