

Dachi
达电

China Brand

On-load Regulate Voltage Power Transformer

Type SFZ-25000/132
Standard IEC60076-1:1993
IEC60076-2:1993
IEC60076-3:2000
IEC60076-5:2006
Product Code IDR.710.4969
Insulate Level h.v. Line Terminal LI/AC 650/275kV
h.v. Neutral Terminal LI/AC 250/95 kV
Lv. Line Terminal LI/AC 60/25 kV
Lv. Neutral Terminal LI/AC 60/25 kV
p.v. Line Terminal LI/AC 60/25 kV
Type of Equipment Outdoor
Altitude 62 m
Cooling ONAN/DNAF
Rated Frequency 50 Hz
No. of Phase 3 phase
Rated Capacity 25000/25000/8000 kVA
Rated Voltage (132±10%±1.25%)/6.6/6.6kV
Vector Group YNyn0+d11
Noise Level dB
Short Circuit Impedance %
No-load Current %
No-load Loss kW
Load Loss kW
Weight of Upper Tank 4780 kg
Lifting Weight of Active Part 27140 kg
Oil Weight 16030 kg
Transport Weight 45030 kg
Total Weight 53840 kg
Serial No.
Manufacture Date Y M

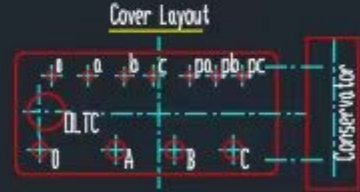
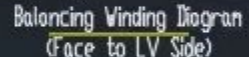
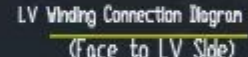
Transformer Oil
Manufacture Name China Oil Refinery
Oil Based Naphthene
Oil No. DB - #

DLTC		Capacity kVA	HV	
Position	Connection Method		Voltage V	Current A
1	X1-Y1-Z1	25000	148500	97.2
2	X2-Y2-Z2		146850	98.3
3	X3-Y3-Z3		145200	99.4
4	X4-Y4-Z4		143550	100.5
5	X5-Y5-Z5		141900	101.7
6	X6-Y6-Z6		140250	102.9
7	X7-Y7-Z7		138600	104.1
8	X8-Y8-Z8		136950	105.4
9	X9-Y9-Z9		135300	106.7
10	X10-Y10-Z10		133650	108.0
11a	X11-Y11-Z11		132000	109.3
11b	AK-AK-CK		132000	109.3
11c	X1-Y1-Z1		132000	109.3
12	X2-Y2-Z2		130350	110.7
13	X3-Y3-Z3		128700	112.2
14	X4-Y4-Z4		127050	113.6
15	X5-Y5-Z5		125400	115.1
16	X6-Y6-Z6		123750	116.6
17	X7-Y7-Z7		122100	118.2
18	X8-Y8-Z8		120450	119.8
19	X9-Y9-Z9		118800	121.5
20	X10-Y10-Z10	117150	123.2	
21	X11-Y11-Z11	115500	125.0	
		LV		
		Voltage V	Current A	
		6600	2186.9	
		Balancing Winding		
		Voltage V	Current A	
		6600	699.8	



HV Phase B Bushing Type CT Parameter				HV Neutral Bushing Type CT Parameter					
Type	Load	Accuracy	Load	Connector	Type	Load	Accuracy	Load	Connector
LR-145	200/5	0.5	20	11SE-1S2	LR0-40	100/5	SP10	20	11SE-1S2

Note: CT is not allow to run when the secondary winding is open circuit.



SINOMA INTERNATIONAL ENGINEERING CO, LTD
12 Floor GanJiakou Plaza E-mail: Sales@sinomae.com
No.17, San Li He Road, Hai Dian District, Fax: 0086-10-68311533
Beijing, China 100037 Tel: 0086-10-88392221/2229
MADE IN CHINA

Shandong Dachi Electric Co.,Ltd.