

Soluscope

SERIE 1

Small is beautiful

The complete solution in endoscopy

Soluscope



The experts in
Washer disinfectors and Chemical products

SOLUSCOPE SERIE 1

SAFETY

- ✓ Double monitoring at each level
- ✓ A complete safety for the endoscope, operator and patient

EFFICIENCY

- ✓ Validated according to the ISO 15883-1 & -4
- ✓ High performance of the concentrated single shot chemistry

SIMPLICITY

- ✓ Touch screen
- ✓ Color code connectors



SOLUSCOPE SERIE 1

SAFETY

- 1 scope at a time to avoid cross contamination
- A volumetric dosing system
- Automatic leak test
- No contact between the operator and the chemistry
- 14 alarms on critical parameters with double check for each one

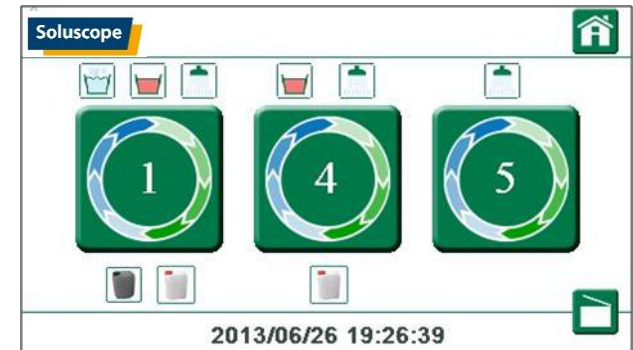


SOLUSCOPE SERIE 1

SAFETY: REPROCESSING CYCLES

4 automatic cycles programmed in the device

- 3 for the ENDOSCOPE
 - Cycle 1: cleaning and disinfection
22 min PA/26 min GTA
 - Cycle 4: disinfection only
16 min PA/21 min GTA
 - Cycle 5: rinsing only (**4 min**)
- 1 for the DEVICE
 - Cycle 6: Self-disinfection
20 min PA/28 min GTA
- 3-point automatic Leak test
- Adapted connectors color code for reliable channel irrigation



SOLUSCOPE SERIE 1

SAFETY: WATER FILTRATION

- 0.2 μ m terminal filtration
- Easy to replace
(recommended every 3 months)
- Can be completed with:
 - 3 stages pre-filtration carter integrated in the device
 - Optional



SOLUSCOPE SERIE 1

SAFETY: CHEMISTRY

Complete range of dedicated single use chemistry



SOLUSCOPE SERIE 1

SAFETY: DETERGENT

- Single use chemistry
- Enzymatic or « Neutral »



- Enzyme complex
- Non Foaming
- High efficiency
- Shelf life: 36 months

Cycle 1 consumption: 50 ml at 35°C



- pH neutral
- Non Foaming
- High efficiency with Nonionic and anionic surfactants and Sequestering agents
- Shelf life: 36 months

Cycle 1 consumption: 50 ml at 35°C

After opening, the container must not be used for more than 2 months.

SOLUSCOPE SERIE 1

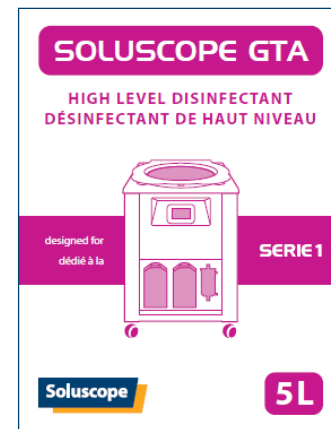
SAFETY: DISINFECTANT

- Single use chemistry
- PA or GTA



- PA 5% concentrated (bottles)
- Dilution at 1% (bowl)
- 6 mn contact time
- Large antimicrobial spectrum
- Shelf life: 14 months

Cycle 1 consumption: 100 ml at 40°C



- GTA 25 % concentrated (bottles)
- Dilution at 1% (bowl)
- 10 mn contact time
- Shelf life: 36 months

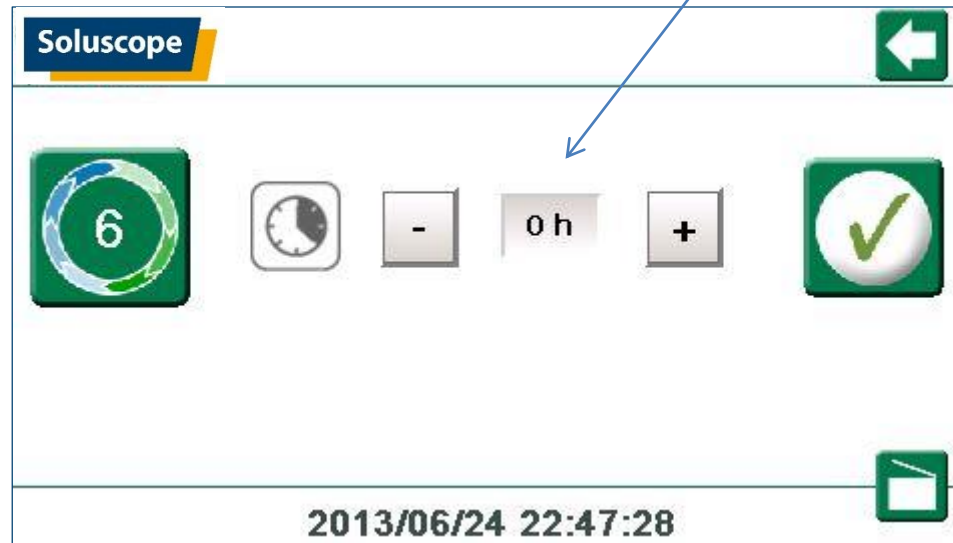
Cycle 1 consumption: 100 ml at 40°C

After opening, the container must not be used for more than 2 months.

SOLUSCOPE SERIE 1

SAFETY: SELF-DISINFECTION

Delay can be programmed

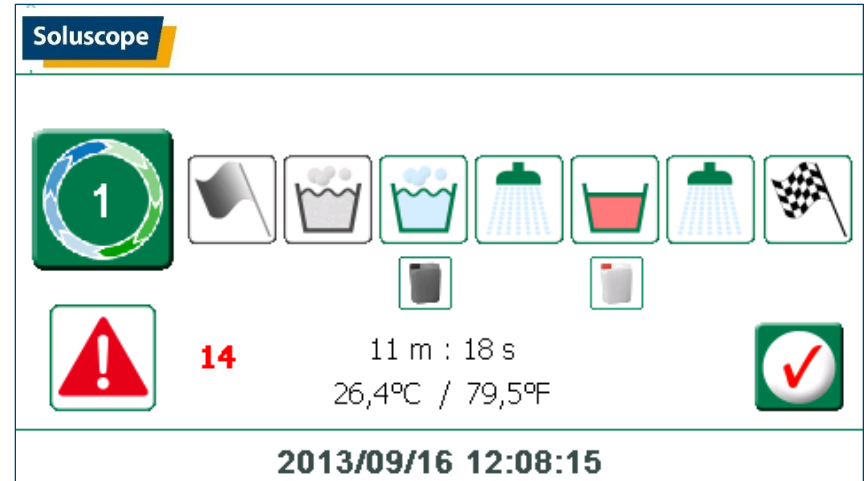


Cover all tubing elements including the water filter
Automatic check of emptiness of the bowl

Recommended to be **daily** performed

SOLUSCOPE SERIE 1

SAFETY: IN CASE OF ALARM



In case of malfunction during the cycle:

- Cycle is aborted
- Red signals displayed on the screen
- Alarm buzzer to inform the user
- Alarm has to be acknowledged by the user
- Lid is securely closed until automatic rinsing and draining are performed

SOLUSCOPE SERIE 1

SAFETY: TRACEABILITY

PRINTER OPTION:

- Each cycle issues a printed ticket
- Written indications
- Printer integrated on the Front Panel
- Endoscope, Patient and Operator information to be filled by the user

```
-----  
SN : A0002  
Cycle : 1  
Scope : _____  
Patient : _____  
Operator : _____  
Start :  
2013/06/12 13:15:15  
End :  
2013/06/12 13:15:29  
Cycle time : 00m:14s  
Alarm : 1  
TRUE : NO
```



SOLUSCOPE SERIE 1

SAFETY: CHEMISTRY HANDLING

- 2 Bottles only, easy access
- Easy plug, error proof connection system plus color code
- Plunger is inside the bottle
- No contact between the operator and the chemistry
- Removable and washable bottle stand



EFFICIENCY: VALIDATED WITH Regulatory Framework

Product validation	Manufacturer quality
<ul style="list-style-type: none">• ISO 15883-1 & -4• IEC 60601-1-2 / IEC 61326 (EMC)• IEC 61010-1 & 2-040 (Electrical Safety) 	<ul style="list-style-type: none">• ISO 9001: 2008• ISO 13485: 2003  <p>Soluscope REGISTERED TO ISO 9001:2008 AND 13485:2003 FILE NUMBER A14025</p>

EFFICIENCY: what the 15883-4 brings

Security

- ❖ Physically different connection mode for each chemical product
 - ✓ *No contact with the user*
- ❖ Automated or manual leak test
 - ✓ *Automated leak test*
- ❖ Double check of critical parameters with cycle stop in case of deviation
 - ✓ *14 cycle-stop alarms*
- ❖ Final rinsing with microbiologically controlled water
 - ✓ *The water going through the tank is filtered in its entirety at 0,2µm*
- ❖ Autodisinfection including the bowl, the hydraulic circuits and the terminal filter
 - ✓ *Endoscope absence is checked at the beginning of the cycle*

Efficiency

- ❖ Requirements in terms of microbiological activity
 - ✓ *In vitro sporicidal activity demonstrated for PA and GTA*
- ❖ Validation of the couple of product's efficiency
 - ✓ *With minimal concentration and chemical contact time, optimum temperature*
- ❖ Cleaning & disinfection of internal and external parts of the endoscopes
- ❖ Solution purge at each stage

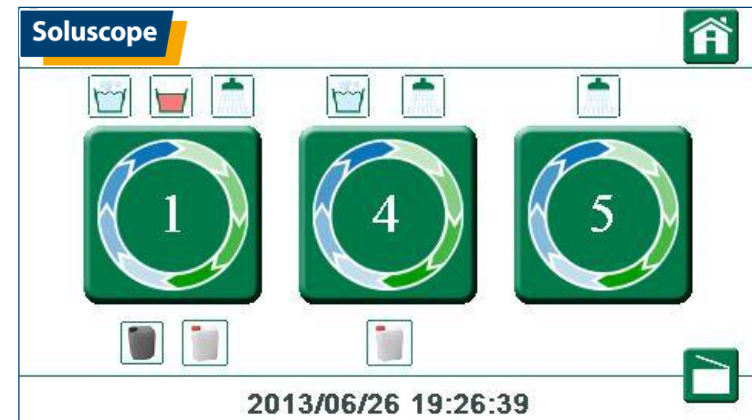
EFFICIENCY

- Validation of the Device & chemistry couple for more security and efficiency
- Validation performed by an internationally recognized 3rd party lab :



SOLUSCOPE SERIE 1

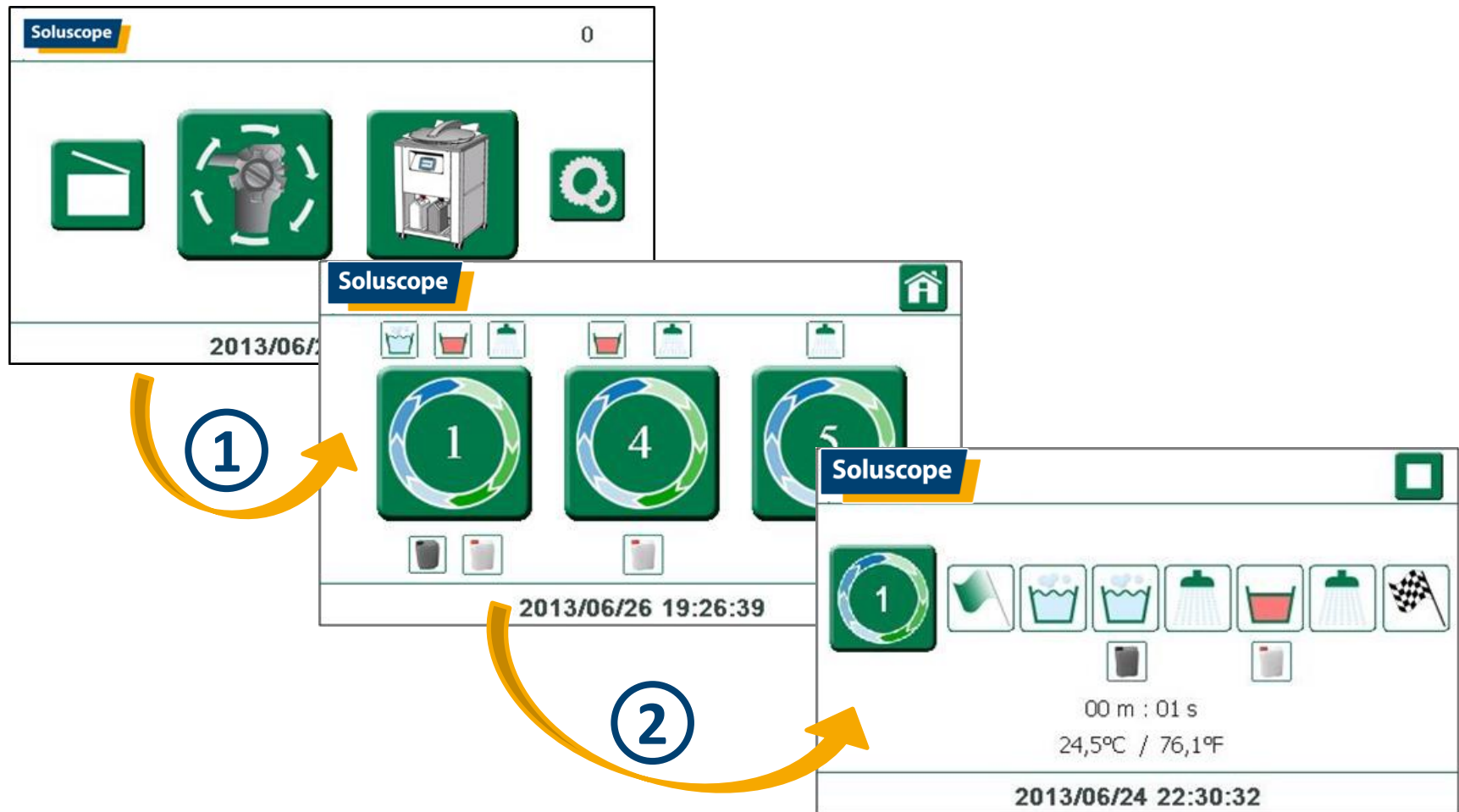
SIMPLICITY



- Graphical Human Machine Interface with Icons
- All commands on the screen
- Visualization of all steps in progress of the Process

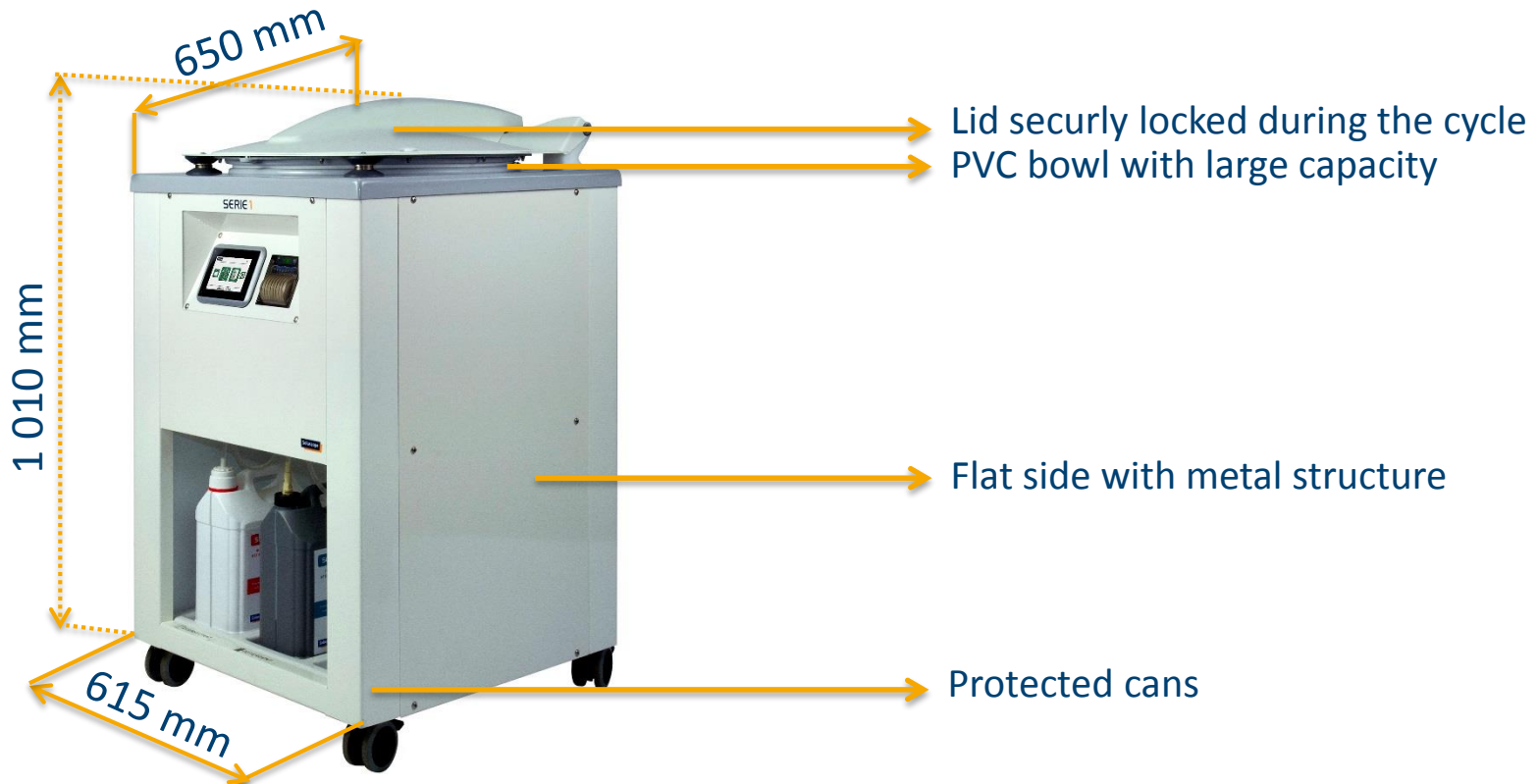
SOLUSCOPE SERIE 1

SIMPLICITY: Launch a cycle with two clicks only!



SOLUSCOPE SERIE 1

SIMPLICITY: COMPACT, MOBILE AND ROBUST



On wheels, only 67 Kg and very small foot print
Easy to install, maintain and clean

SOLUSCOPE SERIE 1

SIMPLICITY: ERGONOMIC

- Stand up use
- Easy loading of all types of flexible endoscopes
- Easy connection of the scope in the bowl
- Easy access to all functions from the screen



SOLUSCOPE SERIE 1

SIMPLICITY: PLUG AND PLAY



Provided tubes



Mixer, recommended to have

SOLUSCOPE SERIE 1

SIMPLICITY: MAINTENANCE

- Easy access to components as all panels can be removed
- Modular internal architecture
- Inside room for manipulation
- Every year or 2000 cycles: preventive maintenance
- Warranty: 1 year



Internal Code	Designation	Sales ref	Number of cycles									
			2000	4000	6000	8000	10000	12000	14000	16000	18000	20000
3687	SERIE 1 Doser grid	A1002	X	X	X	X	X	X	X	X	X	X
3641	SERIE1 lid seal+ Plastic rivets assembly	J1002-KIT	X	X	X	X	X	X	X	X	X	X
0786	PVDF CALREZ 124-2/2 NF DN5 G1/4 Solenoid valve	E4000		X		X		X		X		X
3841	Draining pump seal EPDM	P-003-EPDM		X		X		X		X		X
3688	SERIE 1 bowl grid	H1001		X		X		X		X		X
0371	3/4 PP JOINT VITON 290P Valve	R-116		X		X		X		X		X
3464	PVDF / Silicone valve for pipe 5X9	R1001				X				X		
2516	20X27 silicon pipe	T-003				X				X		
2523	TYGON 2375 (4,8X8) pipe	T3012				X				X		
2514	15X21 silicone pipe	T-002				X				X		
2451	TRAV. 4X6 without valve	R3033							X			
0782	Right water solenoid valve	E3002							X			

SOLUSCOPE SERIE 1

SIMPLICITY: ERGONOMIC



Safe and efficient

Designed for users



SOLUSCOPE SERIE 1

SIMPLICITY: CONNECTORS

Transparent connector
(large diameter channels)

- ❖ Biopsy
- ❖ Suction

Blue connector
(small diameter channels)

- ❖ Water
- ❖ Air
- ❖ Additional channel

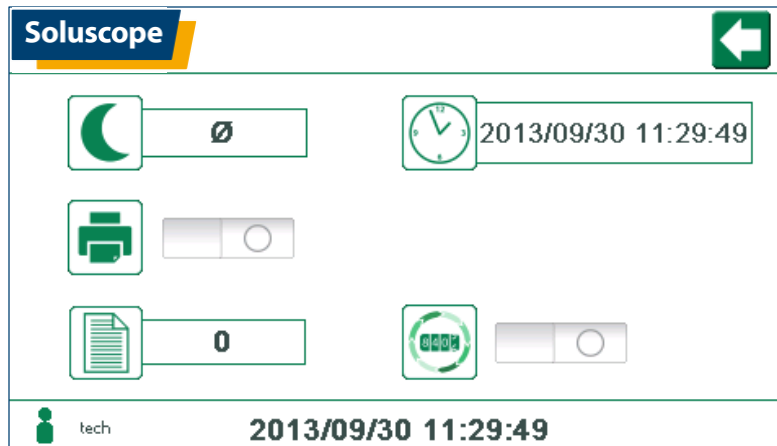
Green connector
❖ Leak test

Compatible with all major endoscope brands

SOLUSCOPE SERIE 1

OPTIONS: activated or not

- THERMAL PRINTER
- WATER PRE-FILTRATION
in 3 stages



SOLUSCOPE SERIE 1

A COMPLETE SOLUTION TO OPTIMIZE YOUR ORGANIZATION

- **A dedicated and secure transport solution**

- Designed to rapidly dispatch and transport trays
- Can be driven with one hand
- Compact, can be placed under a bench
- Customizable with accessories (document holder, medical napkins holder, cleaning agent compartment)



- **Storage rack**

- Store up to 10 endoscopes/trays
- Small foot print
- Enhanced your process flow



The logo for Soluscope features the word "Soluscope" in white, bold, sans-serif font, centered within a dark blue rectangular box. This box is partially overlapped by a yellow, L-shaped graphic element that extends to the right and downwards from the bottom-right corner of the blue box.

Soluscope

... The Complete Solution in Endoscope Reprocessing