

GARDEN REVIVAL
GARDEN CLASSIC
BOLLARD
UP&DOWN
DOWNLIGHT
IN-GROUND
BRICKLIGHT
FLOODLIGHT
BULKHEAD
SOLAR
URBAN CLASSIC
URBAN REVIVAL
URBAN MODERN
POST
LAMPS

ECOVIVI 500 GX53 LED

GRAND SIZE



Modern luminaries made of shockproof resin material, UV-rays stabilized, rust and corrosion-free. Suitable for post top, wall and hanging installation. Supplied with flat diffuser granting no upward light emission. Equipped with TÜV-CB certified, long-life, efficient and **Kelvin settable GX53 LED modular system** i. Designed according to the international regulations against light pollution (standard UNI 10819 – Installation area: Zone 1). Insulation class II, Protection rating IP55.

Diffusore moderno realizzato in resina antiurto, stabilizzato ai raggi UV, inattaccabile da ruggine e corrosione. Idoneo per il montaggio a palo, a sospensione o a parete. Fornito con diffusore piatto per garantire assenza di emissioni di luce verso l'alto. Provvisto di sistema modulare a LED GX53 con Kelvin impostabile certificato TÜV -CB di lunga durata ed alta efficienza. Progettato in ottemperanza alle norme internazionali contro l'inquinamento luminoso (standard UNI 10819 – Area di installazione: Zona 1). Classe di isolamento II, grado di protezione IP55.



EV6.000.D9K

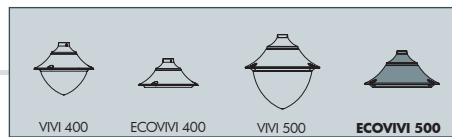
CCT SETTABLE

3000 K 4000 K 6500 K

SDCM <6

RECYCLABLE	ANTI-SHOCK	TEMPERATURE		WALL	POST	HANGING





ECOVIVI 500 GX53 LED - COMPONENTS

IP55



ROOF made of shockproof resin material one piece only, UV-rays stabilized, rust and corrosion-free.

TETTO in un unico pezzo, realizzato in resina antiurto, stabilizzata ai raggi UV, inattaccabile da ruggine e corrosione.



DIFFUSER with flat shape to avoid the skyward dispersion of the luminous flux, according to the international regulations against light pollution and in particular the standard UNI 108119. Made of UV-rays stabilized polycarbonate (PC).

DIFFUSORE con configurazione piatta per evitare la dispersione verso il cielo del flusso luminoso, in ottemperanza alle norme internazionali sull'inquinamento luminoso ed in particolare la norma UNI 10819. Realizzato in policarbonato (PC), stabilizzato ai raggi UV.



Decorative connection **RING** to be fixed on the luminaries diffuser.

ANELLO decorativo di connessione da fissare sul diffusore dell'apparecchio.



ECOVIVI 500 GX53 LED

EV6.000 *



Dimensions and weight

Height: 300 mm
Diameter: 600 mm
Weight: 6,7 Kg
Junction to support: diameter 60 mm
Area expose to wind pressure:
CxS = m² 0,0982

Moulded colours:

Black White Grey

Diffuser PC (UV treated):

Clear


GX53 LED



- **COST SAVING:** long-life and efficient LED light sources.
- **BUILT-IN DRIVER:** quick and easy lamp replacement.
- **GREAT FLEXIBILITY:** GX53 standard lamp holder.
- **FUTURE-PROOFED LUMINARIES:** performances easy to upgrade to latest technology developments.
- **SUITABLE FOR OUTDOOR USE:** built-in driver fully protected against heat and humidity by silicone paste.

Luminaries supplied with white resin CEILING provided with 9x TÜV-CB certified, long-life, efficient and Kelvin settable GX53 LED lamps included. Each lamp can be quickly and easily replaced individually, making the luminaries maintenance very simple.

100 - 240 V

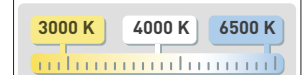
LAMP	POWER	LUMINOUS FLUX (Φ TOTAL) UP TO	COLOUR TEMP.	*ADD. SUFFIX
 GX53 LED	9x 10W 90W	11610 lm	6500 K 4000 K 3000 K	.D9K

LED LAMPS



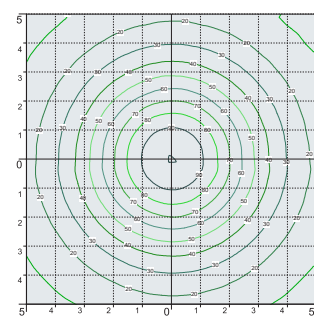
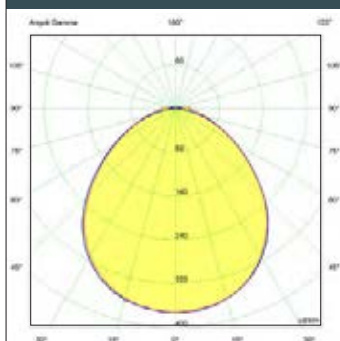
Comply with: EU2019/2015
EU2019/2020
Technical details on page 636.

CCT SETTABLE LED LAMP



CCT switch settable in three different positions, to select the desired Kelvin temperature (3000K/4000K/6500K) and get a customized ambience.

PHOTOMETRIC DATA SAMPLE



ECOVIVI 500 GX53 LED 9X10W

POST height 5mt
10x10mt area: average 38 lux

The photometric data for all the versions are available upon request or on our website.

* ADD THESE SUFFIXES TO THE REFERENCES MENTIONED IN THE CATALOGUE

LAMPS POST URBAN MODERN URBAN REVIVAL URBAN CLASSIC SOLAR BULKHEAD FLOODLIGHT BRICKLIGHT IN-GROUND DOWNLIGHT UP&DOWN BOLLARD GARDEN CLASSIC GARDEN REVIVAL

ECOVIVI 500

GRAND SIZE



EV6.384.P20.D9K



L5F.128.D9K



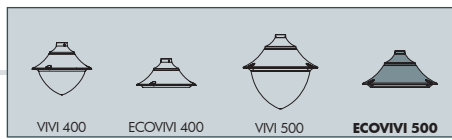
EV6.253.D9K



EV60.129.D9K



MADE IN ITALY



ECOVIVI 500
EV6.000

Pcs 1
Kg 6,7
mc 0,06

LUIGI 500
L5F.128

Pcs 1
Kg 3,7
mc 0,09

NEW LOT/ECOVIVI500
EV6.115

Pcs 1
Kg 4,9
mc 0,09

PILAR/ECOVIVI500
EV6.253

Pcs 1
Kg 8,7
mc 0,11

MARIO/ECOVIVI500
EV6.129

Pcs 1
Kg 4,9
mc 0,09

EKTOR 6000 PILAR/ECOVIVI500 2L
EV6.384.P20

Pcs 1
Kg 92,6
mc 1,42

EKTOR 6000 PILAR/ECOVIVI500 1L
EV6.384.P10

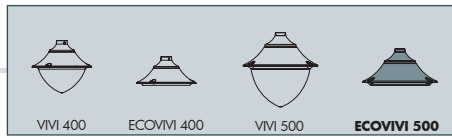
Pcs 1
Kg 84,2
mc 1,32

LAMPS
POST
URBAN MODERN
URBAN REVIVAL
URBAN CLASSIC
SOLAR
BULKHEAD
FLOODLIGHT
BRICKLIGHT
IN-GROUND
DOWNLIGHT
UP&DOWN
BOLLARD
GARDEN CLASSIC
GARDEN REVIVAL

ECOVIVI 500

GRAND SIZE





EKTOR 5000 PILAR/ECOVIVI500 1L EV6.377.P10	AKILLE 5000 PILAR/ECOVIVI500 1L EV6.427.P10
Pcs 1 Kg 54,7 mc 0,39	
EKTOR 4500 PILAR/ECOVIVI500 1L EV6.374.P10	AKILLE 4500 PILAR/ECOVIVI500 1L EV6.424.P10
Pcs 1 Kg 49,2 mc 0,37	
EKTOR 4000 PILAR/ECOVIVI500 1L EV6.371.P10	AKILLE 4000 PILAR/ECOVIVI500 1L EV6.421.P10
Pcs 1 Kg 43,7 mc 0,35	

EKTOR 5000 PILAR/ECOVIVI500 2L EV6.377.P20	AKILLE 5000 PILAR/ECOVIVI500 2L EV6.427.P20
Pcs 1 Kg 63,1 mc 0,49	
EKTOR 4500 PILAR/ECOVIVI500 2L EV6.374.P20	AKILLE 4500 PILAR/ECOVIVI500 2L EV6.424.P20
Pcs 1 Kg 57,6 mc 0,47	
EKTOR 4000 PILAR/ECOVIVI500 2L EV6.371.P20	AKILLE 4000 PILAR/ECOVIVI500 2L EV6.421.P20
Pcs 1 Kg 52,1 mc 0,45	