

e-scope®

green efficiency



Impressions	03
Product characteristics	04
Technology	06
Functional description	07
Products	
e-scope® Otoscopes	08
e-scope® Ophthalmoscopes	09
Sets	10
Spares & accessories	11



e-scope®
IMPRESSIONS



POCKET INSTRUMENTS 2.0

WHITE LIGHT, GREEN TECHNOLOGY

3.7V LED illumination and conventional alkaline batteries – an almost impossible combination up to now. Not just pie in the sky, but state of the art. The new **e-scope®** is the perfect blend of leading-edge LED technology, more efficient diagnosis and an environment-friendly energy source. Because the **e-scope®** breaks new ground with its world innovation, the IPC (Integrated Power Converter): younger, smarter and greener.

The innovative potential of the e-scope®

- LED technology for otoscopes and ophthalmoscopes with low-reflection, bright and white light. The pure white light (approx. 5,500 K) ensures colour-neutral illumination in addition to improved colour differentiation, thereby aiding more efficient diagnosis in comparison with halogen or xenon bulbs.



e-scope®

PRODUCT CHARACTERISTICS

CENTREPIECES OF THE **e-scope®**

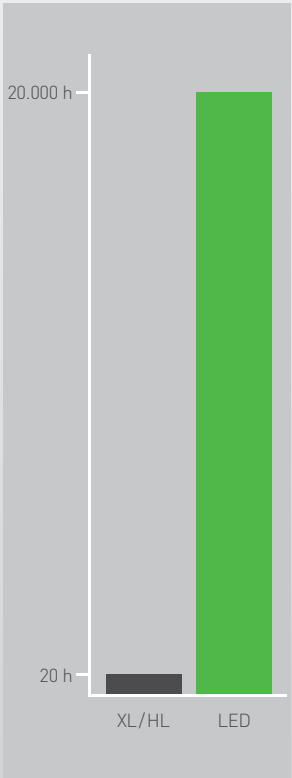
PIONEERING ADVANTAGES



LED illumination

For uniform illumination of the examination field with pure white light (5500 K). The LED illumination shows colours as they really are. Helpful for efficient diagnostics plus an almost unlimited service life.

Bulb service lives

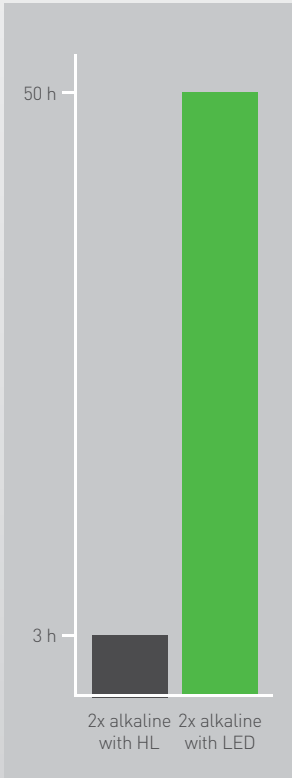


green efficiency

- Low maintenance costs thanks to long LED and battery service lives. Whilst the service life of a xenon light source is only approx. 20 hours, LED burns for at least 20,000 hours, i.e. over 2 years at a go – with **e-scope®**, even with two conventional AA batteries.
- Particularly high environment-friendliness, for the newly developed IPC in the **e-scope®** always converts the voltage of simple alkaline batteries into the optimum voltage required for LED operation, resulting in battery lives of around 50 operating hours.

Its optimum values in all these fields make the **e-scope®** a pioneering pocket instrument for flexible diagnosis.

Battery service lives



THE WORLD FIRST IN THE **e-scope®**
2 CM² OF SHEER INNOVATION

AA batteries deliver a maximum 3V. However, a 3.7V voltage means that considerably more efficient LEDs can be used. Incompatible technical prerequisites? Not anymore. With the IPC, Riester has succeeded in producing a development that revolutionises illumination of pocket instruments. Because the tiny IPC inside the **e-scope®** always converts the voltage of conventional AA-size batteries into the optimum voltage supply for LEDs, thereby allowing efficient operation of LED illumination with alkaline batteries. As a result, the IPC not only allows optimum light quality, but also provides economic and ecological benefits. The service life of a light-emitting diode is therefore up to 1,000 times longer than that of xenon illumination and the batteries used in the **e-scope®** are discharged considerably more thoroughly thanks to the IPC; consequently, they do not need to be disposed of and replaced as often.



▶ Integrated
Power
Converter ▶

e-scope®

SIMPLY MORE INTELLIGENT

Continuous improvement has always been Riester's claim. With the new e-scope®, a further step has been successfully taken towards optimum illumination, environment-friendliness and profitability.



e-scope®

FUNCTIONAL DESCRIPTION

e-scope®

PRODUCT RANGE

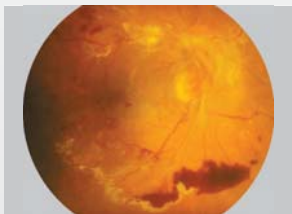


e-scope® ophthalmoscopes are available with vacuum, xenon or LED illumination.

- With 2.7V vacuum or 2,5 V xenon illumination and with innovative **3,7V LED** illumination for higher-contrast and more efficient diagnosis
- Dioptre disc with 18 corrective lenses (**+/- 1, 2, 3, 4, 6, 8, 10, 15, 20 dioptres**)
- Easy-to-use aperture wheel with **six different apertures** (fixation star, large circle, small circle, red free filter, blue filter, semi circle)
- High performance optics with aspherical condenser lens
- Spectacle protection
- Parallel optical path
- Dust-protected



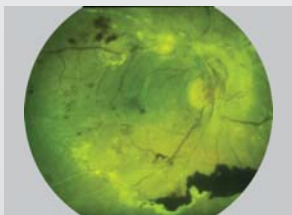
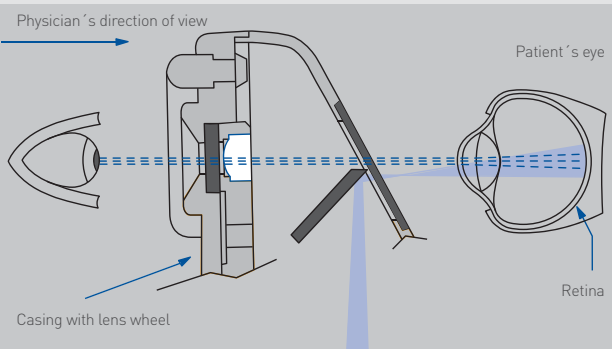
Healthy fundus



Pathological fundus

Optical path

Corneal and iris reflexes are avoided by separation of the parallel observation and illumination beams (Gullstrand's principle). The illuminated retinal area is fully visible – even with narrow pupils. Optimum conditions are achieved for ophthalmological examinations.



Fundus with red free filter

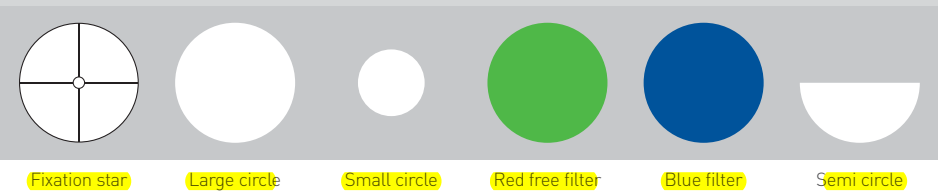
Dioptre disc

With 18 corrective lenses

D+ 1 | 2 | 3 | 4 | 6 | 8 | 10 | 15 | 20
D- 1 | 2 | 3 | 4 | 6 | 8 | 10 | 15 | 20

Apertures

With easy-to-use aperture wheel



Fixation star

Large circle

Small circle

Red free filter

Blue filter

Semi circle

ALWAYS ON HAND: POCKET-SIZE SETS
SMALL SETS FOR A HIGH LEVEL OF SAFETY

e-scope® otoscopes and ophthalmoscopes are available in an impact-resistant case or in a space-saving bag. They include special inserts in which the instruments can be perfectly stowed and offer adequate space for the battery handle and ear speculums.



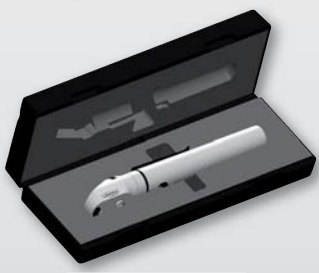
e-scope® otoscope with direct illumination

- | | | |
|-----------------------|---|--------------------|
| • Vacuum 2.7V, in bag | <input type="checkbox"/> white | Art. No.: 2100-200 |
| | <input checked="" type="checkbox"/> black | Art. No.: 2101-200 |
| • XL 2.5V, in bag | <input type="checkbox"/> white | Art. No.: 2100-201 |
| | <input checked="" type="checkbox"/> black | Art. No.: 2101-201 |



e-scope® F.O. otoscope

- | | | |
|---------------------|---|--------------------|
| • XL 2.5V, in case | <input type="checkbox"/> white | Art. No.: 2110-202 |
| | <input checked="" type="checkbox"/> black | Art. No.: 2111-202 |
| • LED 3.7V, in case | <input type="checkbox"/> white | Art. No.: 2110-203 |
| | <input checked="" type="checkbox"/> black | Art. No.: 2111-203 |



e-scope® ophthalmoscope

- | | | |
|-----------------------|---|--------------------|
| • Vacuum 2.7V, in bag | <input type="checkbox"/> white | Art. No.: 2120-200 |
| | <input checked="" type="checkbox"/> black | Art. No.: 2121-200 |
| • XL 2.5V, in case | <input type="checkbox"/> white | Art. No.: 2122-201 |
| | <input checked="" type="checkbox"/> black | Art. No.: 2123-201 |
| • LED 3.7V, in case | <input type="checkbox"/> white | Art. No.: 2122-203 |
| | <input checked="" type="checkbox"/> black | Art. No.: 2123-203 |



e-scope® otoscope with direct illumination/ophthalmoscope

- | | | |
|-----------------------|---|--------------------|
| • Vacuum 2.7V, in bag | <input type="checkbox"/> white | Art. No.: 2130-200 |
| | <input checked="" type="checkbox"/> black | Art. No.: 2131-200 |



e-scope® F.O. otoscope/ophthalmoscope

- | | | |
|---------------------|---|--------------------|
| • XL 2.5V, in case | <input type="checkbox"/> white | Art. No.: 2130-202 |
| | <input checked="" type="checkbox"/> black | Art. No.: 2131-202 |
| • LED 3.7V, in case | <input type="checkbox"/> white | Art. No.: 2130-203 |
| | <input checked="" type="checkbox"/> black | Art. No.: 2131-203 |

SIMPLE HANDLING

SPARES AND ACCESSORIES FOR e-scope®



Reusable ear speculums

• 2 mm	10 items	Art. No.: 10775
• 2.5 mm	10 items	Art. No.: 10779
• 3 mm	10 items	Art. No.: 10783
• 4 mm	10 items	Art. No.: 10789
• 5 mm	10 items	Art. No.: 10795



Disposable ear speculums

• 2 mm	100 items	Art. No.: 14061-532
	500 items	Art. No.: 14062-532
	1000 items	Art. No.: 14063-532
• 2.5 mm	100 items	Art. No.: 14061-531
	500 items	Art. No.: 14062-531
	1000 items	Art. No.: 14063-531
• 3 mm	100 items	Art. No.: 14061-533
	500 items	Art. No.: 14062-533
	1000 items	Art. No.: 14063-533
• 4 mm	100 items	Art. No.: 14061-534
	500 items	Art. No.: 14062-534
	1000 items	Art. No.: 14063-534
• 5 mm	100 items	Art. No.: 14061-535
	500 items	Art. No.: 14062-535
	1000 items	Art. No.: 14063-535



Pneumatic test accessories

• Insufflator	Art. No.: 10960
• Metal connector for the pneumatic test	Art. No.: 10961



Replacement bulbs

• for e-scope® F.O. otoscope	
XL 2.5V, pack containing 6 items	Art. No.: 10600
LED 3.7V	Art. No.: 14041
• for e-scope® otoscope with direct illumination	
Vacuum 2.7V, pack containing 6 items	Art. No.: 10488
XL 2.5V, pack containing 6 items	Art. No.: 10489
• for e-scope® ophthalmoscope	
Vacuum 2.7V, pack containing 6 items	Art. No.: 14050
XL 2.5V, pack containing 6 items	Art. No.: 10605
LED 3.7V	Art. No.: 14051

